


www.ifrc.org
Saving lives,
changing minds.

Disaster relief emergency fund (DREF) Mali: food insecurity

 International Federation
of Red Cross and Red Crescent Societies

DREF operation n° MDRML008 12 January, 2012

The International Federation of Red Cross and Red Crescent (IFRC) Disaster Relief Emergency Fund (DREF) is a source of un-earmarked money created by the Federation in 1985 to ensure that immediate financial support is available for Red Cross and Red Crescent emergency response. The DREF is a vital part of the International Federation's disaster response system and increases the ability of National Societies to respond to disasters.

CHF 174,092 has been allocated from the IFRC's Disaster Relief Emergency Fund (DREF) to support the National Society in delivering immediate assistance to some 8,200 beneficiaries. Unearmarked funds to repay DREF are encouraged.

Summary: According to the draft report of Mali's Early Warning System (EWS), for the 2011/2012 agricultural production year, a total of 703 communes, 104 (population 1.7M) are faced with food difficulties and 55 communes (population 1.2M) with economic difficulties. This is due to a significant decrease in agro-pastoral and fishing income, coupled with an increase in basic cereal prices. The two most affected regions are Timbuktu and Kayes.



Women collecting supplementary food /Photo: CRM

The DREF enables the Mali Red Cross (CRM) to undertake timely response by distributing food in order to protect the economy of target households and thereby reduce their overall vulnerability. In coordinating the response with other actors, the distribution targets two communes in Kayes: Tafacirga and Fegui.

This operation is expected to be implemented over three (3) months, and will therefore be completed by 9 April, 2012; a Final Report will be made available three months after the end of the operation (by 9 July, 2012).

[<click here for DREF budget; here for contact details; here for a map of the affected area>](#)

The situation

According to the draft report of Mali's Early Warning System (EWS), at the end of the 2011/2012 agricultural production year, 104 communes are faced with food difficulties and 55 with economic difficulties. These food and economic difficulties are due to a significant decrease in agro-pastoral and fishing income, coupled with an increase in basic cereal prices. The two most affected regions are Timbuktu and Kayes. Operations in Timbuktu are limited by areas of insecurity.

According to the first estimates of the Government of Mali, some 77.7 billion ,CFA francs (CHF 140M) will have to be mobilized in order to alleviate the humanitarian emergency. The Food Security Commissioner has stressed that available resources are insufficient and so the government has launched an international appeal to Mali's external

technical and financial partners in order to mobilize the necessary resources to respond to the whole of the crisis. The draft appeal recommends food distribution of 45,886 tonnes of cereals to the 1,699,467 inhabitants of the 104 communes classified as food insecure from December 2011.

The household economy is mainly used for acquiring food because the few crops harvested are below the food needs of the family. According to the Food Security Commission, food insecurity is causing people to migrate from affected communes to urban centres. Prompt action can help stem migration and its harmful effects while improving nutritional status in the affected areas.

Coordination and partnerships

In responding to the crisis, duplication of effort is minimized through coordination forums. Within the Movement, IFRC and the Mali Red Cross organize a bi-weekly meeting gathering all Participating National Societies (PNS) and the National Society executives. This coordination meeting is aimed at harmonizing Red Cross actions in order to have better impact in the targeted areas.

The government, through the Office of the Food Security Commissioner, organizes coordination meetings every two weeks. These meetings gather the technical and financial partners for information exchange and policy formulation. The Red Cross / Red Crescent regularly participates in these meetings.

In terms of response, the government officially launched a free food distribution of 1,157 tonnes of food for six (6) communes in the region of Kayes (Diafounou Gory; Fanga; Gory; Konsiga; Marekaffo and Soumpou). Coordinated related response activities of Mali Red Cross, ICRC and PNS partners are indicated below.

Red Cross and Red Crescent action

The Mali Red Cross has been working in close collaboration with the government from the beginning of the crisis. In the early stages, CRM warned its local branches and mobilized 100 volunteers.

ICRC will target the regions of Timbuktu, Kidal and Gao with a range of relief and recovery interventions for a planned 50,000 persons.

Out of seven (7) PNSs present in Mali (carrying out collaboration actions with the Mali Red Cross), four (4) are supporting the NS in providing assistance for the food insecurity crisis. The Spanish Red Cross plans to request emergency funds for the following activities targeting 12,000 families in the region of Kayes:

- Emergency food aid (food distribution), millet and rice,
- Feed distribution,
- Support to the production of off-season crops (market-gardening) with inputs, tools and improved seeds.

The Swedish Red Cross has targeted the region of Timbuktu with the following activities:

- Situation assessment
- Food distribution
- Distribution of cereal and market-gardening seeds
- Increase water and sanitation activities

The Belgian Red Cross plans to increase its nutritional support activities in Kayes. The Danish Red Cross is working on biodiversity and climate change, including planting of fruit trees and soil protection.

The needs

Beneficiary selection: Complementing the efforts of the above actors and filling gaps in immediate needs, this DREF operation will permit CRM to target beneficiaries according to the following criteria:

- 1- The inhabitants of Tafacirga and Fegui communes in the region of Kayes who are among the most affected;
- 2- Affected households with pregnant or breastfeeding women
- 3- Households that lost their livelihoods due to poor rainfall in 2011
- 4- Affected female-headed households (both widows and orphans)
- 5- Affected households at risk of malnutrition
- 6- Affected households where children aged 0 to 5 dominate

The proposed operation

This DREF will mainly serve to implement the following activities:

- Volunteer training in food security and livelihoods evaluation technique, distribution techniques, monitoring and evaluation of field activities
- Sensitisation on food hygiene
- Planning and distribution of foodstuffs
- Food security assessments (with the support of RDRT deployment, funded by British RC)
- Monitoring and evaluation of field activities

This DREF will allow the Mali Red Cross to support 1,640 vulnerable households (average household size 5 persons) in Kayes and to protect at the same time the economy of those households. This region will serve as a pilot, with the DREF operation informing an eventual Emergency Appeal for 120,000 direct beneficiaries that is expected to be launched in February pending results of ongoing food security assessment.

This food assistance operation will contribute to reducing malnutrition and food insecurity in the affected households. Every household will receive 60 kg of rice, 0.75 kg of salt, 3.75 litres of oil, 2.25 kg of sugar, constituting a 30-day food ration. In coordinating the response with other actors, the distribution targets two communes in Kayes: Tafacirga, comprising 16 villages, and Fegui, comprising 17 villages.

Together with these distribution activities, household-level sensitization on food hygiene and the use of food will be carried out. The Mali RC has a good local branch in place with experience in such programmes and a high degree of motivation.

Relief distributions (food and basic non-food items)

Outcome:

Reduce the vulnerability of 1,640 households affected by food difficulties and secure the household economy in the Circle of Kayes

Outputs:

Appropriate food rations are distributed to 8,200 vulnerable people for one month in the Circle of Kayes

Activities planned:

- Mobilisation and briefing of volunteers
- Targeting the beneficiary households according to the set criteria
- Planning and distribution of food
- Monitoring of field activities

Water, sanitation, and hygiene promotion

Outcome:

Sensitization on food hygiene targeting the families that will benefit from the food distribution

Outputs:

Households in the targeted communes develop good nutrition habits.

Activities planned:

- Mobilisations and briefing of volunteers
- Preparation of sensitization tools
- Household sensitization on food hygiene
- Sensitization of the targeted community on the external signs of malnutrition and the measures to be taken
- Monitoring of field activities

Contact information

For further information specifically related to this operation, please contact:

- **IFRC Sahel Regional Representation:** Momodou Lamin Fye, Regional Representative, Dakar phone:(Office) +221.33.869.36.41; (Mobile) +221.77.332.56.72; email: momodoulamin.fye@ifrc.org; Per Becker, Regional Disaster Risk Management Coordinator phone:(Office) +221.33.869.36.68; (Mobile) +221.77.638.21.36; email: per.becker@ifrc.org
- **IFRC Zone:** Daniel Bolanos, Disaster Management Coordinator, Africa; phone: +27 (0)835566911; email: daniel.bolanos@ifrc.org
- **Geneva:** Pablo Medina, Senior Officer, Operations Quality Assurance; phone: +41 22 730 4381; email: pablo.medina@ifrc.org

- **Regional Logistics Unit (RLU):** Kai Kettunen, Regional Logistics Delegate, phone +971 4457 2993, email: kai.kettunen@ifrc.org

For Resource Mobilization and Pledges:

- **IFRC Zone:** Pierre Kremer, Acting Head of Resource Mobilization; phone: +41 792264832; email: pierre.kremer@ifrc.org

For Performance and Accountability (planning, monitoring, evaluation and reporting)

- **IFRC Zone:** Robert Ondrusek, PMER/QA Delegate, Africa phone: +254 731 067277; email: robert.ondrusek@ifrc.org



Click here

1. DREF appeal budget **below**
 2. Click **here** to return to the title page
-

How we work

All IFRC assistance seeks to adhere to the Code of Conduct for the International Red Cross and Red Crescent Movement and Non-Governmental Organizations (NGOs) in Disaster Relief and the Humanitarian Charter and Minimum Standards in Humanitarian Response (Sphere) in delivering assistance to the most vulnerable.

The IFRC's vision is to inspire, encourage, facilitate and promote at all times all forms of humanitarian activities by National Societies, with a view to preventing and alleviating human suffering, and thereby contributing to the maintenance and promotion of human dignity and peace in the world.

www.ifrc.org
Saving lives, changing minds.



The IFRC's work is guided by Strategy 2020, which puts forward three strategic aims:

1. Save lives, protect livelihoods, and strengthen recovery from disaster and crises.
 2. Enable healthy and safe living.
 3. Promote social inclusion and a culture of non-violence and peace.
-

DREF OPERATION

12-01-12

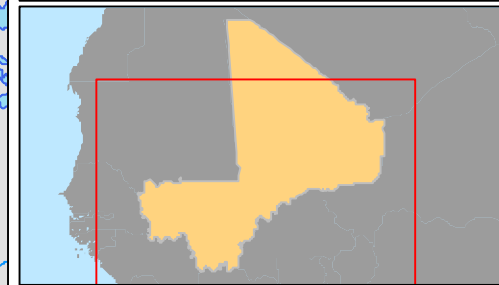
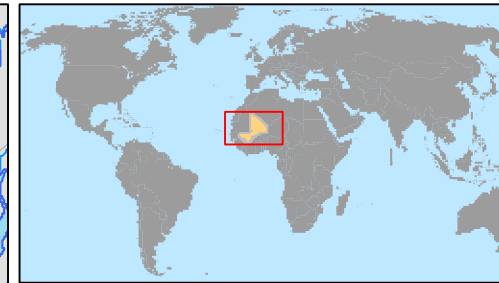
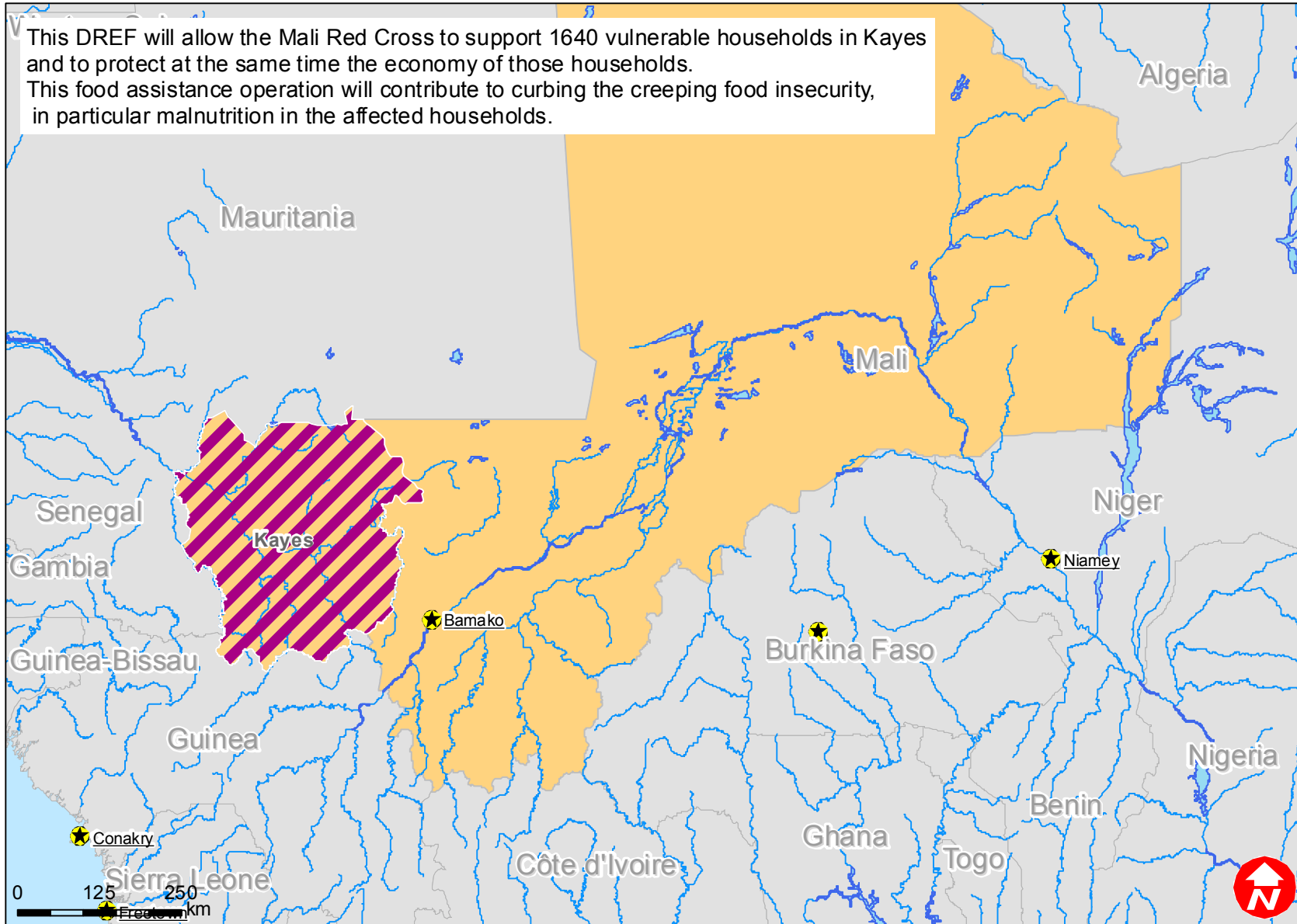
Mali: Food Insecurity (MDRML008)


Budget Group	DREF Grant Budget CHF
Shelter - Relief	
Shelter - Transitional	
Construction - Housing	
Construction - Facilities	
Construction - Materials	
Clothing & Textiles	
Food	95,408
Seeds & Plants	
Water, Sanitation & Hygiene	
Medical & First Aid	
Teaching Materials	
Utensils & Tools	
Other Supplies & Services	
Emergency Response Units	
Cash Disbursements	
Total RELIEF ITEMS, CONSTRUCTION AND SUPPLIES	95,408
Land & Buildings	
Vehicles Purchase	
Computer & Telecom Equipment	
Office/Household Furniture & Equipment	
Medical Equipment	
Other Machinery & Equipment	
Total LAND, VEHICLES AND EQUIPMENT	0
Storage, Warehousing	6,467
Distribution & Monitoring	27,471
Transport & Vehicle Costs	3,916
Logistics Services	
Total LOGISTICS, TRANSPORT AND STORAGE	37,854
International Staff	7,008
National Staff	
National Society Staff	2,172
Volunteers	7,052
Total PERSONNEL	16,232
Consultants	
Professional Fees	
Total CONSULTANTS & PROFESSIONAL FEES	0
Workshops & Training	8,880
Total WORKSHOP & TRAINING	8,880
Travel	
Information & Public Relations	772
Office Costs	1,931
Communications	1,135
Financial Charges	290
Other General Expenses	965
Shared Support Services	
Total GENERAL EXPENDITURES	5,093
Programme and Supplementary Services Recovery	10,625
Total INDIRECT COSTS	10,625
TOTAL BUDGET	174,092



Mali: Food insecurity

This DREF will allow the Mali Red Cross to support 1640 vulnerable households in Kayes and to protect at the same time the economy of those households. This food assistance operation will contribute to curbing the creeping food insecurity, in particular malnutrition in the affected households.



 Targeted province