



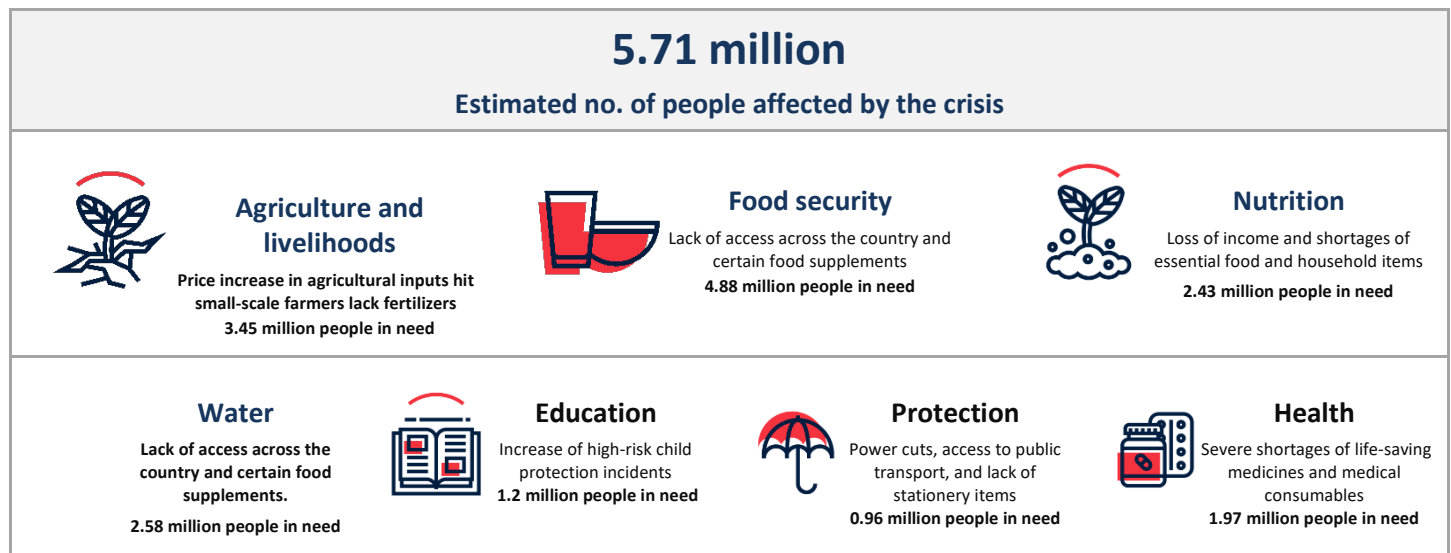
School Children receives school packs to continue their education in Polannaruwa district. (Photo: SLRCS)

<p>Emergency appeal №: MDRLK014 Emergency appeal launched: 07/06/2022. Operational Strategy published: 30/06/2022</p>	<p>Glide №: CE-2022-000199-LKA</p>
<p>Final report issued on: 29/01/2026</p>	<p>Timeframe covered by final report: From 07/06/2022 to 31/12/2023</p>
<p>Number of people targeted: 500,000 IFRC EAI</p>	<p>Number of people assisted: 546,250¹</p>
<p>Funding coverage (CHF): CHF 28 million through the IFRC Emergency Appeal CHF 28.5 million Federation-wide</p>	<p>DREF amount initially allocated: CHF 741,000</p>

¹ Inclusive of IFRC secretariat support and bilateral contributions

A. SITUATION ANALYSIS

Description of the crisis



Humanitarian impact (source: UN OCHA²)

Sri Lanka had been facing a complex emergency characterized by high inflation, a deteriorating currency, food insecurity, shortages of fuel, essential healthcare services, threatened livelihoods, reduced public services, and rising protection concerns. The crisis had been exacerbated by a reduction in domestic agricultural production due to a failed organic farming transition, imposed ban on agrochemicals by the previous Government during 2021.

The crisis had led to increased vulnerability, poverty, and destitution among a significant portion of the population. In 2021, 2.4 million people fell below the international poverty line for lower-middle-income countries, with more poor households losing over half of their income. This resulted in people selling assets, becoming indebted, and cutting down on food, and their children were less likely to attend school. An estimated 5.7 million people were in need of humanitarian assistance, with at least 4.9 million were being food insecure.³ The crisis had disproportionately affected vulnerable populations, including children, pregnant women, people with disabilities, female-headed households, migrants, refugees, and marginalized ethnic and religious groups.

The Central Bank was unable to defend the currency due to insufficient international reserves, leading to the government defaulting on debt payments in May 2022. Inflation rates rose sharply since the government could not import essential commodities, including fuel, which further increased shortages and inflation. Inflation rates slowly dropped, with food inflation (Year-over-year) decreasing from 30.6 per cent in April 2023 to 21.5 per cent in May 2023, while non-food inflation (Year-over-year) decreased from 37.6 per cent in April 2023 to 27.0 per cent in May 2023.⁴

The emerging crisis led to country-wide civil unrest. Following mass protests, which started in March 2022, a new government was installed in May, and the country's president was replaced in July. To help ensure support from the International Monetary Fund (IMF), the new government raised taxes to offset the external debt, adding to the economic burden, including that faced by the most vulnerable. On 20 March 2023, the IMF Board approved a 48-month extended arrangement under the Extended Fund Facility of SDR 2.286 billion (about USD 3 billion) to support

² WFP Sri Lanka Situation Report, 22 June 2022

³ UN OCHA (2022). Sri Lanka Multi-Dimensional Crisis Situation Report No. 2, 05 Sept 2022.

⁴ "Sri Lanka." Economic Forecasts from the World's Leading Economists, www.focus-economics.com/countries/sri-lanka.

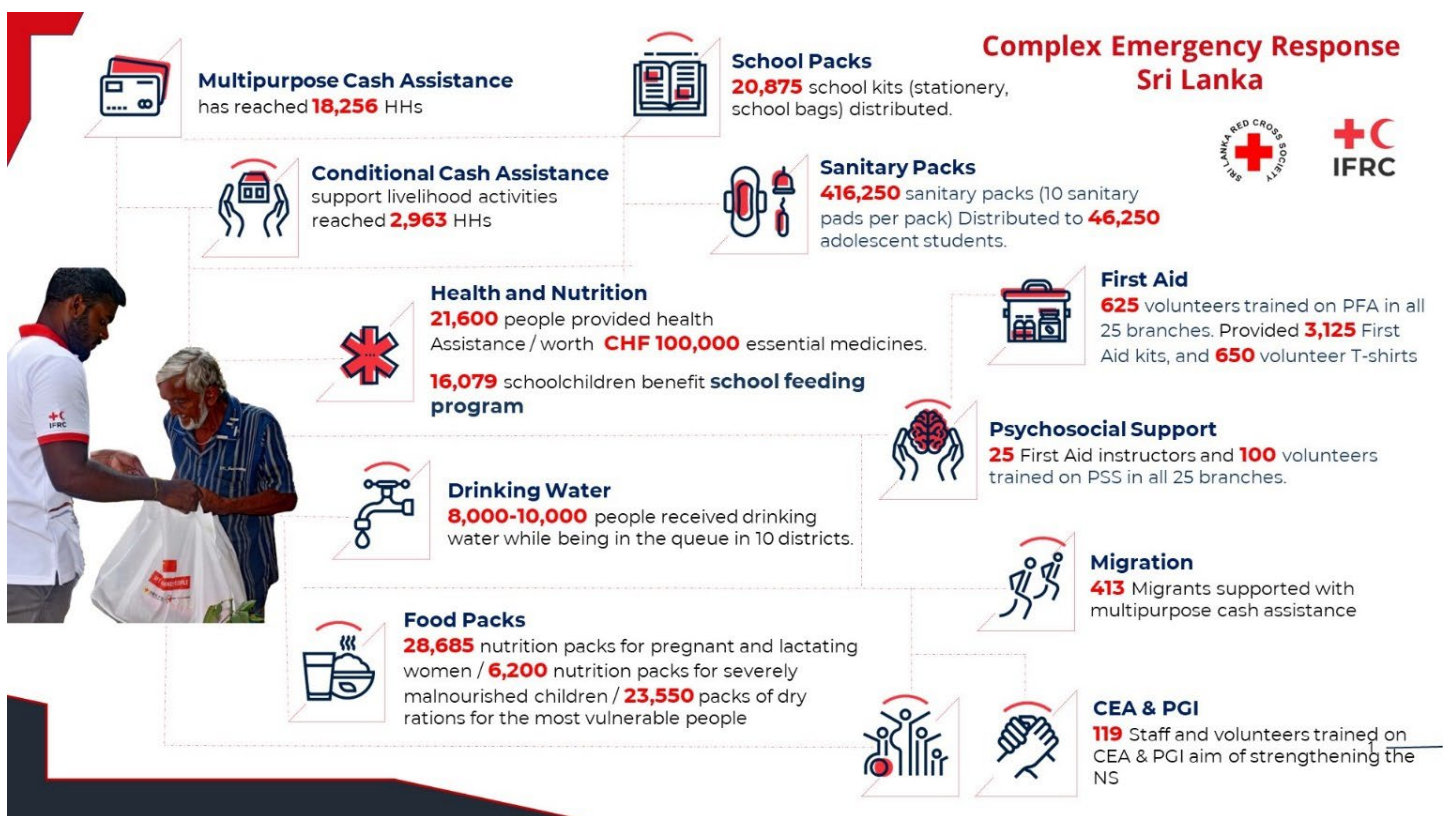
Sri Lanka's economic policies and reforms. The fiscal macroeconomic crisis resulted in a humanitarian emergency during the fourth quarter of the year 2022, causing millions of people to face widespread and chronic food, fuel, cooking gas and health services shortages. Unprecedented food inflation increased food insecurity, particularly among children under five, pregnant women, and lactating mothers. The poverty rate accelerated since the crisis began, with food inflation reaching a record high of 94.9 per cent in September 2022. Sri Lanka was ranked as having the world's sixth-highest food inflation.⁵

Humanitarian support for these groups decreased, making them even more vulnerable. Food insecurity had also made them vulnerable, including informal wage earners, minimum wage earners, single female-headed households, families with multiple children, low-income households, chronic illnesses, and disadvantaged farmers. Outbound migration is increasing still, affecting skilled labor retention, and putting children of absent parents at risk of neglect.

By 2024, Sri Lanka had made notable progress in stabilizing its economy and reform process, with economic growth beginning to recover after two years of contraction. Despite these gains, the overall recovery remains uneven. Many households, particularly those already vulnerable, continue to face heightened hardships, with poverty still nearly double pre-crisis levels, food insecurity persisting, and ongoing concerns around malnutrition, limited livelihood opportunities, and reduced access to essential services⁶.

Summary of response

Overview of the Operating National Society and response



Sri Lanka Red Cross Society (SLRCS) maintains 25 branches in all districts of the country. Over 100 staff members and 6,000 active volunteers engaged in the response. Most of them were trained in disaster response and capable of providing relief assistance to affected people in times of disaster/emergencies. At the national, district, and divisional

⁵ ACAPS (2022). Overview: Sri Lanka Socio-economic crisis. <https://www.acaps.org/country/sri-lanka/crisis/socio-economic-crisis>.

⁶ [World Bank. Sri Lanka Development Update 2025](#)

levels, there are National Disaster Response Teams (NDRT), Branch Disaster Response Teams (BDRT), and Divisional Disaster Response Teams (DDRT). SLRCS also trained disaster response teams specialized in water safety, which have 150 active members. These individuals well-trained in life-saving techniques to assist rescue operations in times of need. Volunteers trained in first aid were immediately deployed during disasters for lifesaving purposes. The SLRCS has a pool of 25 trained Cash and Voucher Assistance (CVA) personnel who deployed during the response to set up and assist with CVA activities.

Since the onset of the crisis, SLRCS had been monitoring the situation closely, mindful of its sensitivity and the safety of its staff and volunteers. The headquarters maintained close communication with the branches to discuss options, preparedness, and contingencies. To ensure safer access and acceptance, the National Society ensures its adherence to the Movement's Fundamental Principles. SLRCS teams provided first aid and ambulance support to people affected by the civil unrest, whether civilian or security personnel. They treated more than 21,600 people since April 2022, including transporting more than 1,000 people to hospitals. Branches participated in first aid training, medical camps, and emergency first aid activities. Teams also provided dry food, relief items, drinking water, and cash and voucher assistance under the multi-purpose modality, and conditional cash assistance to support the livelihood activities of people hit by the economic crisis and food insecurity, reaching more than **500,000 people** through the IFRC secretariat support and the bilateral contributions during the implementation periods.

In addition to the above support, the following activities were also completed with the support of corporate partners and ICRC.

ICRC

- Disbursement of 6,000 multi-purpose cash grants in 12 districts
- Distribution of 5,600 nutritional food packs for pregnant and lactating mothers in 14 districts

Uber

- Distribution of 8,085 food packs in Colombo district

Coco Cola

- 1,500 packs of dry ration distributed with the assistance of Coca-Cola in 10 districts: one pack worth LKR 25,600 (CHF 72)

Sri Lanka Paediatricians Association

- SLRCS provided logistics, staff, and volunteer time for the distribution of 6,200 nutritional food packs for families with Severe Acute Malnourished children in the Nuwara Eliya district.

Operational risk assessment

There were a few main risks that affect the operation:

- **Supply chain and transport disruptions** due to lack of fuel and related exceptionally high costs of local transport. This limits the movement of staff and volunteers for work and response activities. Transport disruptions may limit the movement of people and goods.
- **Price fluctuations** mainly due to the rapid depreciation of LKR against the USD too affected the procurement of goods and services.
- The unpredictable situation in the country, the declaration of curfew and spontaneous protests and clashes significantly increased the **risks for staff and volunteers** engaged in the implementation of the response operation.
- The response operation was very **underfunded** as the funding coverage for the Emergency Appeal was about 19 per cent (CHF 5,280.212). And as a result, there was a risk that the SLRCS not able to address all the pressing needs of the affected people.

- The country faced **severe floods** in August and September 2022 that affected 10 districts in Sri Lanka which also delayed the complex emergency interventions.

B. OPERATIONAL STRATEGY

The operation supported people affected by the economic crisis and civil unrest in Sri Lanka through integrated food security, nutrition, livelihoods, health, and education interventions, reaching over **500,000 people** nationwide. It aligned with the Sri Lanka Red Cross Society's (SLRCS) strategic vision and country plan, strengthening community resilience and enhancing the National Society's capacity and operational readiness for future crises. This was reinforced through three enabling approaches: National Society capacity strengthening, coordination and partnerships, and Secretariat services—complemented and further strengthened the SLRCS's efforts to build a strong National Society with systems and mechanisms in place to deliver high-quality programmes and services to most vulnerable people in Sri Lanka.

The operation ensured that the most vulnerable and marginalized groups able to meet their immediate basic needs by providing them with multi-purpose cash assistance. Cash assistance aimed to mitigate the depletion of household livelihood assets and reduced negative coping strategies. This response also included nutritional food packages for pregnant and lactating mothers, school stationery packages for students in poor schools in rural and urban areas, menstrual hygiene packages for female students, and promotion on menstrual hygiene management to adolescent girls. School feeding programmes provided nutritious meals to the school children in the selected school in the most vulnerable districts. Drinking water distribution at queueing hotspots like cooking gas outlets and fuel stations. Health Sector was also supported through the provision of medicines and consumables, patient transportation, and first aid services, and by helping to address mental health and psychosocial support (MHPSS) needs.

The operation especially focused on integrating PGI and CEA aspects across all activities and in other community resilience-building initiatives of the National Society. The humanitarian responses were focused on the most vulnerable households, including farmers across nine provinces, low-income fishermen in coastal districts, casual laborers in the country's west, and the plantation workers of the estate community in the country. It also supported the health sector by providing in-kind medications sourced through Movement partners and distributed through health facilities in coordination with the Ministry of Health.

During the implementation of the complex emergency response operation, it also paid particular attention to areas impacted by extreme weather events, which affected over 82,000 people, particularly in Western, Central, and Sabaragamuwa provinces, from the beginning of August until the end of October 2022. IFRC had allocated CHF 499,554 to support SLRCS in responding to extreme weather-induced disasters, such as floods and landslides, affecting people, providing essential household items, emergency first-aid and medical camp services, cash and voucher assistance, and conditional cash assistance to support shelter and capacity-building activities for the branches and volunteers.

The Complex emergency operation continued until 31 December 2023, with the release of Operation Update # 03. The regular appeal-based 12-month report, which detailed the operation's progress from 6 June 2022 to 6 July 2023, was released in July 2023. The operation strategy and implementation plan were integrated into the unified plan 2023, extending until 31 December 2023. Moreover, the project code for the operation was being maintained, and the reporting of the operation was aligned with the bi-annual reporting of the unified plan of Sri Lanka. In addition, this final appeal-based report covered the progress of the operation including the transition into the unified plan until 31 December 2023.

C. DETAILED OPERATIONAL REPORT

STRATEGIC SECTORS OF INTERVENTION

 Food Security & Livelihoods	People Reached	80,800
	Female:	42,016
	Male:	38,784

Objective: *Communities, especially in disaster and crisis affected areas, restore and strengthen their livelihoods*

Key indicators:	Indicator	Target	Actual
		<i># of people supported with livelihoods restoration and strengthening economic activities</i>	50,000
	<i># of pregnant mothers supported with nutrient food packs</i>	15,000	15,000
	<i># of malnourished children supported with nutritional packs</i>	6,200	6,200
	<i># of elderly people supported with dry rations packs</i>	18,000	18,000
	<i># of vulnerable people supported with dry ration packs to ensure local foods and supplements available for intake</i>	25,000	26,785

The following key activities were planned and implemented under the food security and Livelihoods sector:

1. Conditional cash grants to vulnerable farmers to restore and recover their livelihoods.
2. Nutrient food packs/nutritional packs to pregnant/lactating mothers and malnourished children.
3. Food for three months for people staying in elderly homes, children's homes, and other marginalized or disadvantaged groups.

Conditional Cash Grants

A total of 2,963 households that claimed both instalments received conditional cash grants to help recover and strengthen their livelihoods. The intervention achieved about 30 per cent of the total target, mainly due to funding constraints. The selected households across five districts—Vavuniya, Colombo, Polonnaruwa, Kalutara, and Kurunegala—were provided with cash grant assistance of LKR 75,000 (approximately CHF 230) each. The amount was determined following discussions with the agriculture department, the rural development authority, and the farmers' community, as well as the costs of the various livelihood activities proposed by the community during the detailed assessment. This amount was disbursed in two instalments based on the successful implementation of their proposed agricultural livelihood activities: the first transfer was LKR 50,000, and the second transfer was LKR 25,000.

The four districts selected—Colombo (570 households), Kalutara (352 households), Kurunegala (1,192 households), Polonnaruwa (249 households), and Vavuniya (600 households)—were chosen based on the capacity and prior experience of the Sri Lanka Red Cross Society (SLRCS) branches in executing income-generating activities, as well as the significant impact the crisis had on the livelihoods of people in these areas.

Cash recipients were selected based on criteria related to agriculture and livelihood, including those who had experience or were already involved in agricultural activities, farmers seeking opportunities to develop their businesses or equipment due to the economic crisis, and farmers who have land suitable for cultivation and were already affected by the crisis.

During the assessment, the most vulnerable households were given priority, including those headed by women, those with pregnant or breastfeeding mothers, those with disabled members, and those with a larger number of family members. All selected beneficiaries received a training on development of business plan, and the objective of the training was to develop practical business plans for farming, raising livestock, and fishing. Government development and agriculture officers provided skill enhancement training on home gardening and livestock rearing. SLRCS and government agriculture officials had continuously monitored the livelihoods activities that helped to make the interventions successful, also ensured the sustainability.

Nutrient Food Packs/Nutritional Packs

To enhance the intake of nutrient foods, 15,000 nutrient food packs were distributed covering all 25 districts.

The below-mentioned criteria were used to select the most vulnerable pregnant mothers:

- Low Body Mass Index (BMI)
- Poor Weight gain during pregnancy

The Branch Executive Officers (BEOs) of each branch conducted their assessment in this regard and identified the most vulnerable areas with the most vulnerable pregnant mothers. The vulnerability of pregnant mothers measured based on the criteria mentioned above. Further, 6,200 nutritional food packs were distributed to severely malnourished children under the programme with the Sri Lanka College of Paediatricians. The midwives from the Ministry of Health were actively involved in the implementation process. They provided daily support to pregnant mothers at clinics and addressed other medical needs. At the end of the intervention, they assessed the impact of the nutritional pack and kept records of the mothers' weights and other improvements related to the supplements.

Dry ration packs for elderly homes were distributed in all 25 districts. In total, 4,500 dry ration packs were distributed to the selected elderly homes by the SLRCS branch office according to the 1:4 ratio (1 pack for 4 people). Each branch received a 180 quota on average and assisted 18,000 elderly people.

Dry Ration Packs

Apart from this, **26,785 packs** of dry rations were distributed in all 25 districts with bilateral support from China (16,200 packs) and Singapore Red Cross (1,000 packs), and corporate partners such as Uber (8,085 packs) and Coca-Cola (1,500 packs).

Challenges:

- SLRCS relied on an initial beneficiary list from government agents, with occasional modifications at the Grama Niladhari level causing delays. Improved coordination and timely follow-up were needed to expedite the process.
- SLRCS volunteers assisted in assessing and finalizing the list of affected individuals. Challenges included managing multiple distribution sites and restrictions due to Local Government Elections, but the relief team successfully coordinated with community volunteers and local authorities to reach those in need.

Lesson learned:

- The initiatives ensured strong stakeholder support, which greatly enhanced overall effectiveness. Timely assistance from National Headquarters (NHQ) was crucial, providing essential resources such as guidelines, training, funding, and documentation that were vital to smooth operations.
- The use of KOBO Toolbox for data collection proved particularly valuable, streamlining the process and ensuring the accurate and efficient collection of essential information.



Multi-purpose Cash

People Reached	91,280
Female:	47,465
Male:	43,815

Objective:	<i>Households are provided with unconditional/multipurpose cash grants to address their basic needs</i>		
Key indicators:	Indicator	Target	Actual
	<i># of people reached with food assistance or cash for basic needs</i>	75,000 households (375,000 people)	18,256 households (91,280 people)

Multi-purpose Cash Assistance

SLRCS supported 18,256 vulnerable households, with multipurpose cash assistance to meet their basic needs. The most vulnerable households such as women-headed households, families with pregnant and lactating mothers, persons with disabilities, and elderly people, and the number of family members living under one roof, were prioritized and the cash was disbursed through the individual bank account. The primary list of target recipients was prepared and shared with the community and respective government authorities for their feedback and opinion. After addressing all the grievances raised, a final list of target recipients was prepared and endorsed by the government authority.

Multi-purpose cash assistance helps the poor and marginalized with immediate needs. Communities in the plantation sector faced significant challenges during the crisis, therefore the estate sector communities (5,077 households out of the total number were supported) received multi-purpose cash assistance twice. The grant value for each household for a month was determined based on the recommendation of the UN's Cash Working Group to meet the basic needs based on the analysis of the Minimum Food Expenditure Basket. The value of the grant for each household is LKR 20,000 (CHF 55). The National Society also conducted a market assessment in coordination with the World Food Programme (WFP) and shared the findings and recommendations with various stakeholders. The primary market and supply chain were disrupted by a fuel shortage in the country. Inflation was high, leading to a temporary increase in market prices.

SLRCS, with the support of IFRC, has completed post-distribution monitoring. Besides this SLRCS also conducted market assessment in coordination with WFP and shared the findings and recommendations with various stakeholders.

Post Distribution Monitoring

In August 2022, a survey was conducted via telephone, with 200 respondents providing information. A sample size of 5 per cent of beneficiaries was used to ensure representative results in districts where SLRCS supported vulnerable households through cash assistance.

Due to transportation issues, face-to-face interviews were not possible, although that would have been more interactive for discussion and information.

Key Findings:

- 76 per cent of respondents used cash assistance for food followed by payment to utilities, medicine, education, and debt repayment. The situation is consistent across provinces, but urban recipients spent more on education than rural ones.
- 62 per cent of respondents spent most of their cash in local markets, as items were available, but the price was higher than at the beginning of 2022. 25 per cent went to district markets for lower prices, and 11 per cent spent most of their cash in local grocery stores.
- 36 per cent mentioned that the wife decided to spend the cash assistance, whereas 35 per cent took a joint decision (husband and wife). 24 per cent of respondents mentioned husbands decided to spend the money because they always visit the market.
- 87 per cent of respondents mentioned that SLRCS' support helped them meet basic needs for a month, while 13 per cent mentioned the amount was not sufficient to meet their basic needs due to increased prices. Most respondents, mainly from urban areas, are burdened by rent for houses, which is not required for rural people. They suggest continuing cash support for at least three months to find livelihoods and avoid high-interest loans, which could negatively impact their financial situation.
- Most of the respondents (43 per cent) reported no difficulties in withdrawing assistance, while 25% mentioned spending more money and time due to transport issues. Remote areas (17 per cent) faced long lines and 9% experienced long lines or crowding when withdrawing cash from banks.



Utilization of Cash assistance

Challenges:

- One major challenge faced was identifying recipient for the multipurpose cash, given the number of affected people exceeded the SLRCS' capacity to support. The economic crisis had impacted all 25 districts across the country. Funding constraints were a key challenge in supporting the total targeted households.

Lesson Learned:

- To address the situation, SLRCS made the decision to prioritize the estate and plantation sector as they were highlighted as the most affected group in both the IFRC assessment as well as UN assessment report. This target approach proved effective in providing support to the most vulnerable people in targeted areas.



Health & Care

(Mental Health and psychosocial support / Community Health / Medical Services)

People Reached	77,213
Female:	40,151
Male:	37,062

Objective: *Strengthening holistic individual and community health of the population impacted through community level interventions and health system strengthening*

Key indicators:	Indicator	Target	Actual
	<i># of people reached with emergency FA/clinical health care services during emergencies.</i>	180,000	22,600
	<i># of people reached with mental health and psychosocial support.</i>	1,000	250
	<i># of National Society staff and volunteers trained in PFA skills.</i>	625	625
	<i># of hospitals reached by the National Society with the provision of medicines to reduce relevant health risk factors.</i>	25	25
	<i># of First Aid kits distributed to the branches to enhance the readiness for providing first Aid services to the affected</i>	3,125	3,125 (37,659 people)
	<i># of school children benefitted from nutritious food under the school feeding programme.</i>	15,000	16,079 (119 schools)

First Aid and Emergency Medical Services

SLRCS provided First Aid and emergency medical services to 22,600 people across the country, out of which 20,000 people were treated in SLRCS' Colombo First Aid Camp and Treatment Centre. The need for first-aid services was lower than initially projected, as it was required only during the civil protest, and security constraints limited the scale of activities. SLRCS also provided ambulance services to transport over 1,000 people to hospitals for further treatment.

Psychological First Aid (PFA)

SLRCS conducted a Psychological First Aid (PFA) Training of Trainers for 25 staff and volunteers of the 25 district branches. To strengthen the capacity and ensure continuous provision of support, these trained staff and volunteers trained 625 volunteers all over the country on psychological first aid skills. SLRCS also provided PFA services to people waiting in long queues for days. While providing drinking water to people waiting in queues, SLRCS identified 250 people who need PFA support and provided services.

Medicine Procurement

International procurement of the following essential medicines worth **LKR 414,361,474.88** (CHF 1,119,896) had been completed and handed over to the Ministry of Health:

- Six medicinal items named Streptokinase 1.5M. IU,
- Powder for injection, vial. (50 numbers),
- Atracurium Besilate, 10mg/ml,.2.5 ml amp. (3130 numbers),
- Chlorambucil 2mg Tablet (100 numbers),
- Tacrolimus 0.5mg capsule (1600 numbers),
- Rituximab 500mg/50ml solution for infusion, vial (225 numbers),
- Paraffin Gauze 10cm x 10cm (209 numbers).

A [Mobilization Table](#) was published for this operation for additional medicines and medical consumables needed, to address the needs for medicines via in-kind donations from partners as the medicines supply in Sri Lanka is running low.

First Aid

A total of 3,125 First Aid kits were distributed to all Sri Lanka Red Cross Society branches to strengthen the capacity of the branches in providing timely first aid services to the needy. Specifically, 125 First Aid kits were distributed to each branch to improve the health care services in emergencies. With this provision of first Aid kits to the branches SLRCS supported 37,659 people. Each kit contained 31 first aid medical items such as a gauze bandage, dextrose, CPR pocket mass, cold pack, and anti-septic liquids.

School Feeding Programme

The school feeding programme was included in the operational plan developed by SLRCS after consultations with the Ministry of Education. In collaboration with the government's education department, schools were selected based on the socioeconomic conditions of their respective regions. A total of 119 schools across 13 of the most vulnerable districts, particularly focusing on students living in the estate sector, were chosen for the program, and the intervention was implemented for six months from February to July 2023. As a result, 16,079 children benefited from the feeding initiative.

The operation prioritized children who were at the greatest risk. Considering the vulnerability of the children's families, each school identified the most at-risk students for participation in the feeding program. Community involvement and accountability were incorporated throughout the entire process. To ensure the quality of the food and its nutritional value, SLRCS involved government public health inspectors to monitor the quality of food items. On a monthly basis, SLRCS conducted the satisfaction survey and the impact of the programme. The major findings of the intervention are:

- School children, teachers, and parents satisfied with the quality of food.



SLRCS, MAP International and Seva Lanka Foundation donated medicines worth over USD 512,000 through 'Elixir,' Sri Lanka's first medical donation matching platform (Photo: SLRCS).



School feeding programme, providing 5 daily meals per week in Vavuniva district. (Photo: SLRCS)

- School feeding programme increased the enrolment and attendance of poor children, especially from the estate community, who were severely affected by the economic crisis, particularly girls.
- When combined with quality education, they improve cognition and educational success.
- The intervention provided short-term benefits after crises, helping communities recover and build resilience and long-term benefits by developing human capital.

The intervention greatly benefitted to the poorest children, as missing breakfast can impair educational performance. During the monitoring visit to see the impact of the programme on the schools, one of the teachers stated that once the school feeding programme was introduced, the children became more active and enhanced their performance in learning subjects.

"Elixir" Programme

In October 2022, the SLRCS, in collaboration with the Ministry of Health and various donors, launched "Elixir," Sri Lanka's first platform for matching medical donation funds to address medication shortages. The platform quickly received positive feedback from the public and corporate leaders.

In December 2022, "Elixir" provided the Kandy National Hospital with 24 bottles of sevoflurane, valued at over USD 6,000. The platform streamlined the donation process, allowing for efficient matching of requests and donations, ultimately enhancing transparency and reducing turnaround time.


As of 31 December 2023, LKR 414,211,474 (CHF 1.2 million) worth of medicines and medical equipment had been donated to National Hospitals and the Ministry of Health in Sri Lanka through "Elixir," supported by IFRC, ICRC, Qatar Red Crescent, Microsoft, MAP International, PayPal, and Uber.

Challenges:

- There were delays in obtaining approval from the relevant health departments, along with transportation delays, fuel shortages, and limited access to conduct medical camps and first aid services during the protest. Close coordination with the Ministry of Health was essential in advance; the branches used their existing resources and capacity to complete the activities.

Lesson Learned:

- Enhanced resource utilization was essential at the operational level across branches. The NHQ and the branches have undertaken training initiatives for volunteers to address safety concerns while delivering first-aid services. This training helped them to protect themselves during civil protests, thereby effectively managed the challenges during the civil unrest.

	Water, Sanitation and Hygiene	People Reached:	546,250
		Female:	96,250
		Male:	450,000
Objective:	<i>Ensure safe drinking water, proper sanitation, and adequate hygiene awareness of the communities during relief and recovery phases of the Emergency Operation, through community and organizational interventions</i>		
Key indicators:	Indicator	Target	Actual
	<i># of litres of water distributed</i>	24,000,000	24,000,000

# of sanitary napkins provided for female students	60,000	46,250
# of awareness campaigns/cleaning drives/environmental sanitation activities conducted	100	119

Safe Drinking Water and Environmental Sanitation

A total of 100 (1,000-litre water) water tanks procured at the initial stage of the operation were installed in 11 districts. These water points provided water for about 35 days. Approximately 24,000,000 litres of drinking water (an average of 8,000 litres per day, per water point x 100 locations x 30 days) was provided to people waiting in queues. An estimated 500,000 people (10 per cent females and 90 per cent males) used the water (approximately 40-50 litres per day per person, and some people use water for washing at night) across 11 districts.

Furthermore, SLRCS volunteers engaged with the authorities to clean the surroundings near the fuel stations, which had become more littered due to mass gatherings, and volunteers also conducted environmental sanitation activities with awareness-raising.



Sanitary napkin distribution along with menstrual hygiene management, and safe disposal awareness conducted by government health staff in one of the schools at Monaragala branch (Photo: SLRCS)

Sanitary Napkins

A total of 416,250 packs (10 pads per pack) of sanitary napkins were distributed to 46,250 adolescent students across all districts. Each adolescent girl received 9 packs of sanitary napkins. Along with the distribution, a total of 119 menstrual hygiene management, and safe disposal awareness sessions were conducted for the students who received sanitary napkins in each school.

The distribution of sanitary napkins had a very positive impact on school attendance among adolescent girls during their menstrual periods. This was because low-income families could not afford to purchase napkins, so their daughters were forced to use alternatives that could not be used or changed while they were in school, which was the primary cause of the school's low attendance. The sanitary napkins were distributed for use over the course of a year.

Challenges:

- Fuel shortages had hindered the distribution of drinking water to areas where people were waiting in long queues. Coordination with government authorities has improved the delivery of drinking water to the most urgent locations. Additionally, these fuel shortages also impact the transportation of sanitary napkins across the country.



Protection, Gender and Inclusion

People Reached:	106,095
Female:	55,169
Male:	50,926

Objective: *Communities identify the needs of the most at risk and particularly disadvantaged and marginalized groups, due to inequality, discrimination and other non-respect of their human rights and address their distinct needs*

Key indicators:	Indicator	Target	Actual
	<i># of households selected for implementation of multipurpose & Conditional cash programming following a PGI-sensitive data analysis</i>	75,000	21,219
	<i># of Child Safeguarding Risk Analysis conducted</i>	1	1
	<i># of staff and volunteers provided training on PGI in emergencies, including minimum standards and SGBV prevention and response</i>	100	577
	<i># of Provincial level SGBV/VAC referral pathways identified or developed</i>	9	1
	<i># of PGI-related policies developed or updated</i>	2	2

Conditional Cash Grant

A total of 21,219 households (multipurpose cash recipient 18,256 and Conditional Cash Grant recipient 2,963) received beneficiary selection criteria where it was mentioned that the households prioritized the PGI category and included in the beneficiary list. The National Society completed four batches of training on PGI for staff and volunteers.

A total of 71 participants, 37 males, and 34 females, attended the workshop. The overall objective of the training was to enable participants to understand the key elements of PGI, their implications, and their application in their respective areas of work.

The staff and volunteers who were trained conducted interactive PGI sessions for their branch-level staff, community volunteers, and members. In total, 19 branches held PGI sessions with 506 participants, consisting of 251 males and 255 females. The spread of knowledge and skills on PGI concepts, definitions, and contexts was further extended.

The staff and volunteers who were trained on PGI, applied practical strategies and tools to mainstream dignity, access, participation, and safety consideration into programmes and institutional processes. Also, they can assess PGI concerns within the community and evaluate the organizational capacity to carry out PGI activities during the



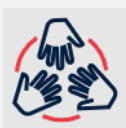
The Protection, Gender and Inclusion (PGI) Core Training for the first batch took place with the participation of staff and volunteers from SLRCS NHQ and branches (Photo: SLRCS).

implementation of activities. The branch staff and volunteers were equipped with the necessary knowledge, skills, and tools to deliver 2-3-hour interactive PGI sessions to their co-staff and the volunteers and community members.

SLRCS drafted the Protection from Sexual Exploitation and Abuse (PSEA) and Child Safeguarding Policy (CSP). The first draft was circulated with governance members of the SLRCS for review and approval. This policy describes the SLRCS's protection, gender, and inclusion (PGI) strategy. It emphasizes the SLRCS's institutional capacity enhancement, programmes and operations, advocacy, partnerships, and collaboration to prevent, reduce, and respond to violence, discrimination, and exclusion.

Challenges:

- The responses focused primarily on addressing immediate needs, which ultimately prolonged into a complex crisis and impacted on the long-term sustainability of the initiatives. However, the SLRCS remained committed to its PGI policies and prioritized the inclusion of diverse communities, including LGBTQ+ and migrant populations, alongside the most vulnerable groups during the implementation of the planned intervention.



Community Engagement and Accountability

People Reached:	106,095
Female:	55,169
Male:	50,926

Objective:	<i>Communities in high-risk areas are prepared for and able to respond to disaster</i>		
Key indicators:	Indicator	Target	Actual
	<i># of people reached through risk communication and community engagement activities</i>	75,000	21,219
	<i># of staff and volunteers trained for CEA</i>	60	59

CEA Trainings


SLRCS conducted two CEA trainings. One was a three-day branch-level training, conducted in Gampaha branch, in which 22 volunteers and 10 staff (12 female and 20 male) were trained. The second training was conducted at SLRCS national headquarters for branch executive officers, in which 27 participants (11 female and 16 male) participated. These trainings included both theory and practical application of CEA concepts, including KOBO data management. The main objective of the trainings was to train SLRCS staff and volunteers on the concept of CEA, Movement-wide minimum actions for CEA, minimum actions for CEA in an emergency, and feedback management. In line with the training, SLRCS developed a WhatsApp group for the training participants to convey messages easily.



SLRCS hosted a three-day CEA and IM training at the National Society. (Photo: SLRCS)

Hotline Numbers

The National Society established and were effectively maintains two hotline numbers that community members could contact 24 hours a day, seven days a week. Dedicated SLRCS staff at headquarters handled incoming calls and promptly provided any requested information and clarify common queries such as when to get assistance and whether any additional documents were required to be submitted, among others.

	<h3>Migration</h3>	People Reached:	413
		Female:	28
		Male:	385

Objective: *Communities support the needs of migrants and their families and those assisting migrants at all stages of migration (origin, transit and destination)*

Key indicators:	Indicator	Target	Actual
	<i># of migrants reached with assistance to meet their basic needs</i>	500	413

A total of 413 migrants were assisted with multi-purpose cash grants to fulfil their basic needs. The selection was made according to the criteria and was agreed upon in consultation with UNHCR. Due to the migrants' inability to access a bank account or phone, cash transfers were carried out in person since the National Society was unable to facilitate online transfers for them. A control mechanism was established by the National Society to ensure transparency during cash distribution.

As part of the documentation process, SLRCS verified the refugee card provided by UNHCR at the time of the cash distribution in the presence of a UNHCR representative. Each migrant received LKR 20,000 (CHF 65).



Multi-purpose cash grant distribution to migrants in Gampaha district. A total of 413 migrants assisted with Cash in envelopes (Photo: SLRCS)

Challenges:

- Final list of refugees and asylum seekers and verification delayed due to the language barriers.


	<h3>Risk Reduction, climate adaptation and Recovery</h3>	People Reached:	26
		Female:	7
		Male:	19

Objective:	<i>The SLRCS's capacity to engage in disaster risk reduction (DRR) and climate change adaptation (CCA) programming is strengthened.</i>		
Key indicators:	Indicator	Target	Actual
	<i># of staff and volunteers trained on Disaster Risk Reduction (DRR) and Climate Change adaptation (CCA)</i>	50	26
<p>A total of 26 staff and volunteers received training on disaster risk reduction and climate change adaptation. Besides these, three staff and volunteers also received training on climate-smart agriculture that helped SLRCS to implement livelihood interventions under the emergency appeal. The trained staff and volunteers also promoted climate-smart agriculture farming, reduced greenhouse gas emissions and the best approach and practices against climate change.</p> <p>Challenges:</p> <ul style="list-style-type: none"> - Economic shocks had a significant impact on the most vulnerable populations, and the limited number of conditional cash grant recipients struggled to fully participate in climate-smart agriculture practices. Nonetheless, the branches conducted thorough monitoring and follow-up to help these recipients return to at least a baseline level of engagement. 			

	Environmental Sustainability	People Reached:	-
		Female:	-
		Male:	-

Objective:	<i>Environmental protection measures are in place to ensure the operation will not cause a negative impact on the environment and instead contribute positively to protecting the environment by protecting, sustainably managing, or restoring surrounding ecosystems.</i>		
Key indicators:	Indicator	Target	Actual
		--	--

The operation is conscious of the environmental damage that it can cause during its implementation and takes measures for environmental protection such as minimal use of plastics and cleaning the surroundings of water distribution points. SLRCS is more concerned with the development of climate-smart farmers and entrepreneurs, as well as the improvement of economic, social, and environmental coherence within farming communities. There were no identified harm or adverse effects on the environment from the activities implemented under the complex emergency appeal.

	Education	People Reached:	20,875
		Female:	11,967
		Male:	8,908

Objective: *School attendance of poor students is improved, and essential stationery items are provided.*

Key indicators:	Indicator	Target	Actual
	<i># of students reached with school packs</i>	25,000	20,875

During the economic crisis, when households were struggling to satisfy their most necessities, particularly food, poor households couldn't purchase school supplies (e.g. notebooks, bags, etc.).

As many children were unable to afford school stationery, SLRCS offered 20,875 students at schools in 25 districts school packs that included stationery, a mathematical instrument box, and a school bag. These school packs were purchased locally, with technical approval from the Global Humanitarian Services and Supply Chain Management (GHS&SCM) – Asia Pacific office.



Some of the senior high school students who received school packs from Vavuniya District SLRCS Branch (Photo: IFRC)

Children from low-income families were dropping out of school to help their families financially. Children from disadvantaged backgrounds were hit harder by the economic crisis, with the poorest students facing 57 per cent more learning loss than the richest. Distributing school packs helped low-income families financially and motivated them to enrol their children in schools.

Challenges:

- The main challenge was selecting the most vulnerable students from the total population, as the crisis impacted all students to varying degrees due to high inflation. Both school administration and parents were supportive throughout the selection process, and a comprehensive plan was in place to ensure it was completed on time.

Enabling approaches



National Society Strengthening

Objective: *Communities in high-risk areas are prepared for and able to respond to disaster*

Key indicators:	Indicator	Target	Actual
	<i># of staff and volunteers recruited and inducted to implement response</i>	625	250

# of volunteers trained on core disaster management areas	625	625
---	-----	-----

A total of 10 district project officers, 10 community mobilisers and 250 volunteers were hired for the operation. Additionally, 625 volunteers were trained on PFA. Orientation of staff and volunteers on the operation was conducted while ensuring quality assurance regularly through bi-weekly review meetings. The volunteers who were involved in the responses were also trained on the Branch Disaster Response Team (BDRT) and National Disaster Response Team (NDRT) trainings and they were included in the trained volunteers pool to support the protracted complex emergency response.

Challenges:

- Retaining volunteers at the branch level was a challenge due to the ongoing crisis. The branches collaborated closely with the community Red Cross units, where volunteers were mobilized at the unit level. This approach ensured that volunteers remained actively engaged in the field, even with limited resources available across the branches.

Lesson Learned:

- The capacities of volunteers, BDRT, and NDRT members were enhanced through the implementation of complex emergency response activities on the ground, focusing on methodology, planning, and strategy, with an emphasis on the protracted nature of the crisis.



Coordination and Partnerships

Objective:	<i>Communities in high-risk areas are prepared for and able to respond to disaster</i>		
Key indicators:	Indicator	Target	Actual
	<i>The operation demonstrates evidence of an effective and coordinated international disaster response</i>	Yes	Yes

SLRCS had partnership and a good working relationship with the Ministry of Health. A joint online platform called Elixir was developed and launched on 19 October 2022, together with the Ministry of Health shared information on current medicine requirements, and potential donors were expressed interests to support procurement and to enable suppliers to share information. The online platform was operated and maintained by the SLRCS, together with its global network of volunteers and professionals, and in partnership with the Sri Lanka Medical Supplies Division of the Ministry of Health, the Elixir Platform was a huge collaborative undertaking to help Sri Lanka overcome the shortage of lifesaving medicines to support the Ministry of Health.

IFRC and SLRCS participated in the Humanitarian Country Team (HCT) meetings, Inter-Sector Coordination Group (ISCG) Sri Lanka, engaging with Cash, Information Management, as well as with Accountability to Affected Population (AAP) working groups. IFRC provided inputs to the development of AAP common messaging for the Sri Lanka document and the revision of the UN Humanitarian Needs and Priorities (HNP) plan. A summary of the IFRC Emergency Appeal was included in the HNP overview published on 18 November 2022. Furthermore, SLRCS and IFRC presented the findings of PDM assessments and Market Assessments at the Cash Working Group (CWG) meetings.

A diplomatic round table was conducted in June 2022 with the participation of the embassies of Australia, Canada, France, Italy, Malaysia, New Zealand, Norway, Switzerland, Thailand, Turkey and the European Union (EU). Bilateral discussions and updates were provided to the embassies of Norway, China, Australia and France. The IFRC country team participated in the ECHO-organized virtual meeting on needs analysis and current response in the country.

The second virtual diplomatic round table was organized and conducted on 21 July 2022, with the participation of the embassies of Canada, New Zealand, Australia, Norway, France, USA, Great Britain, Malaysia, EU in Sri Lanka and USAID.

An extraordinary UN HCT meeting was organized on 12 October 2022, to present the findings of the IFRC/SLRCS Sri Lanka complex emergency needs assessment. A team led by the IFRC's Asia Pacific Regional Director visited the UN compound in Sri Lanka and presented the assessment findings to HCT members. Over 75 people participated in the meeting representing UN agencies as well as INGOs, NGOs, and donor agencies that were engaged in the humanitarian response in Sri Lanka.

The third diplomatic round table was organized and conducted on 14 October 2022, under the joint chairmanship of the SLRCS President, IFRC Regional Director, and ICRC Head of the Delegation. The following embassies and donor agencies participated in the event: Norway, Great Britain, France, India, Japan, New Zealand, Australia, Canada, Thailand, Switzerland, China, EU, and USAID.

Following the round table, a media briefing was held by the SLRCS President and the IFRC's visiting Regional Director, and a member of the Sri Lanka Complex Emergency Needs assessment team presented a summary of the assessment findings to more than 50 Sri Lankan and foreign journalists. The briefing and the associated press release received wide media coverage.



Secretariat Services

Objective: *Communities in high-risk areas are prepared for and able to respond to disaster*

Key indicators:	Indicator	Target	Actual
	<i># of surge deployments</i>	6	6
	<i># of key messages/statements to profile/safeguard the SLRCS response</i>	10	2

In-country local surge was recruited to provide technical support to the operation at the initial stage. Six international surge experts were also deployed, including one remote deployment with the following expertise:

1. Humanitarian Diplomacy, Strategic Engagement - completed the mission.
2. Regional Head, Strategic Engagement and Partnerships (two times) - completed the mission.
3. Partnerships and Resource Development (twice) - completed the mission.
4. Cash and Voucher Assistance – completed the mission.
5. Communication (supported by the Australian Red Cross) - completed the mission.
6. Procurement- completed the mission.

Furthermore, the following surge personnel were deployed for 6-8 weeks to conduct the assessment and completed their mission:

1. Humanitarian Impact and Needs Assessment Team Leader, supported by the German Red Cross.
2. CVA / Livelihoods and Food Security Coordinator, IFRC.
3. Protection Gender & Inclusion Expert, supported by the Canadian Red Cross.
4. Health Expert & Statistician supported by the Norwegian Cross.
5. Humanitarian Information Analyst supported by the German Red Cross.
6. Primary and Mobile Data Collection Officer, IFRC
7. Mapping and Visualization Officer, IFRC remote support

A set of key messages and a press release were developed and issued to profile SLRCS' work as well as to highlight the humanitarian conditions and needs in the country.

In addition, the [final evaluation](#) of this emergency operation was conducted during the 2nd quarter of 2024. The evaluation captured lessons learned and offered recommendations to guide the SLRCS and IFRC's future humanitarian interventions. An assessment was also conducted, focusing on the unmet needs as the crisis evolved into a protracted situation. The national society aimed to analyse the needs of affected communities to inform future operations. This comprehensive understanding supported strategic improvements and enhanced the quality of humanitarian efforts of the SLRCS.

Communication products

IFRC issued a press release to highlight the key issues and what the SLRCS was doing to respond to the crisis to coincide with the diplomatic briefing in October 2022. Furthermore, a Communications surge delegate was deployed from the Australian Red Cross to support the operation to profile the current response and share stories from affected people. The communication outputs of the operation thus far are as follows:

- 8 June 2022 press release: Sri Lanka's economic crisis spiralling into a [food crisis](#)
- 14 June 2022 web story: [CRIPPLING ECONOMIC CRISIS HITS SRI LANKA](#): Severe shortages of fuel, food, and necessities are putting Sri Lankans at grave risk.
- 19 July 2022 web story: [FOOD IN MY BACKYARD](#): Sri Lanka faces a colossal job crisis never seen before.
- 22 September 2022 web story: [ENDURING AN ECONOMIC CRISIS](#) Sri Lanka: people in the Northern Province dream of a better future for their children
- 26 September 2022 web story [LEARNING IN A CRISIS](#): teachers and Sri Lanka Red Cross help students facing hunger and hardship
- 14 October 2022 press release: Sri Lanka's vulnerable forced to risk a pathway to [destitution](#)
- 14 October 2022 ABC Radio National interview, Alexander Matheou: Sri Lanka's economic and humanitarian crisis deepens
- 5 December 2022 web story: [CLIMATE CHANGE IN THE DRY ZONE](#): lessons from the past help Sri Lankan farmers adapt to the future.
- More than 190 photos and more than 40 videos (edited and unedited) including information, details, and context captured either by IFRC staff or obtained from SLRCS staff.
- Regular exposure on IFRC Asia Pacific regional Twitter account capitalising on the photos, videos and information obtained.

Contributions to external articles and opinion editorials:

- The New Humanitarian: Out of Sri Lanka's tumult, a humanitarian crisis emerges.
- The Diplomat: Sri Lanka's Worrying Exodus - accelerating migration caused by the economic crisis

- Video story: Climate change in Kurunegala: adapting traditional practices to climate change (sponsored by Australian Red Cross). Footage from this video was also used during IFRC's presentations at the COP27 meetings, Egypt, 6-18 November 2022
- Video story: Working hard to support our communities, winner of IFRC Innovation Prize, Solferino Academy Climate Change TVii
- Five short videos on the community members that have received cash grants in Sri Lanka. The Red Cross provides unconditional cash grants to the most vulnerable people in all 25 districts of Sri Lanka.
- One short video on Sri Lanka Red Cross providing medical aid to their community.

SLRCS is on social media: Twitter, Facebook, and YouTube @SLRedCross.

IFRC Asia Pacific regularly posts on the emergency response and issues: @IFRCAsiaPacific, as well as the website and story platform Exposure.

- [SLRCS Market Assessment](#)
- [School stationery packs distribution1](#)
- [Psychosocial support workshops for expecting mothers and fathers to help them cope in these stressful times](#)
- [School stationery packs distribution2](#)
- [Beneficiary needs assessment](#)

D. FINANCIAL REPORT

The overall Federation-wide funding required to support SLRCS is 28.5 million Swiss Francs. As of 31 Dec 2023, this Emergency Appeal, which seeks 28 million Swiss francs is 18.86 per cent funded (CHF nearly 5.28 million) and recording an expenditure of CHF 5.26 million (99.75 per cent of income). Click here for more operation details: [IFRC GO-Sri Lanka: Complex Emergency](#) and funding [coverage details](#). Please refer to the financial report at the end of this report for more details

The conclusion of this Emergency Appeal operation has resulted in a fund balance of CHF 28,391. In alignment with IFRC commitment to continued humanitarian support, these funds will be returned to the DREF pot. Should you have any questions or concerns regarding this balance, you are kindly invited to contact: PartnershipsEA.AP@ifrc.org within 30 days from the publication of this final report. The IFRC and SLRCS extend their gratitude to all partners and donors for their invaluable support in this operation.

Contact information

For further information, specifically related to this operation please contact:

At the Sri Lanka Red Cross Society:

- **Secretary General:** Dr. Mahesh Gunasekera; email: mahesh.gunasekara@redcross.lk, phone: +94703471084
- **Operational Coordination:** Damitha Chanaka, Preparedness & Response Manager; email: damitha.chanaka@redcross.lk, phone: +94703514929

At the IFRC Country Cluster Delegation Delhi:

- **IFRC Country Cluster Head of Delegation;** John Entwistle, CCD; email: john.entwistle@ifrc.org, phone: +919266905183
- **Programme Manager :** Meenu BALI; email : meenu.bali@ifrc.org

At the IFRC Asia-Pacific Regional Office in Kuala Lumpur:

- **Regional Director:** Alexander Matheou; email: alexander.matheou@ifrc.org
- **Deputy Regional Director:** Juja Kim; email: juja.kim@ifrc.org
- **Head of Health, Disaster, Climate and Crisis Unit:** Joy Singhal; email: joy.singhal@ifrc.org
- **Acting Lead of Evolving Crises and Disasters:** Ganesh Navaratnam; email: ganesh.navaratnam@ifrc.org
- **Operations Coordinator:** Nusrat Hassan; email: opscoord.southasia@ifrc.org
- **Regional Communications Manager:** Afrhill Rances; email: afrhill.rances@ifrc.org

For IFRC Resource Mobilisation and Pledges support:

- **Senior Officer – Partnerships in Emergencies:** Mohd Hisham Bin Ahmad Nazri; email: hisham.nazri@ifrc.org, phone: +60173816985

At IFRC Geneva:

- **Senior Officer Operations Coordination:** Christina Duschl; email: christina.duschl@ifrc.org

For In-Kind Donations and Mobilisation table support:

- **Manager Regional Logistics Unit:** Nuraiza Khairuddin; email: nuraiza.khairuddin@ifrc.org

Reference documents



Click here for:

- [Previous Appeals and updates](#)
- [Operational Strategy](#)

How we work

All IFRC assistance seeks to adhere the **Code of Conduct** for the International Red Cross and Red Crescent Movement and Non-Governmental Organizations (NGO's) in Disaster Relief, the **Humanitarian Charter and Minimum Standards in Humanitarian Response (Sphere)** in delivering assistance to the most vulnerable, to **Principles of Humanitarian Action** and **IFRC policies and procedures**. The IFRC's vision is to inspire, encourage, facilitate and always promote all forms of humanitarian activities by National Societies, with a view to preventing and alleviating human suffering, and thereby contributing to the maintenance and promotion of human dignity and peace in the world.

Operational Strategy

FINAL FINANCIAL REPORT

Selected Parameters			
Reporting Timeframe	2022/4-2025/8	Operation	MDRLK014
Budget Timeframe	2022/4-2023/12	Budget	APPROVED

Prepared on 24 Sep 2025

All figures are in Swiss Francs (CHF)

MDRLK014 - Sri Lanka - Complex Emergency

Operating Timeframe: 16 Apr 2022 to 31 Dec 2023; appeal launch date: 08 Jun 2022

I. Emergency Appeal Funding Requirements

Total Funding Requirements	28,000,000
Donor Response* as per 24 Sep 2025	5,280,212
Appeal Coverage	18.86%

II. IFRC Operating Budget Implementation

Planned Operations / Enabling Approaches	Op Budget	Expenditure	Variance
PO01 - Shelter and Basic Household Items	2,195	2,365	-170
PO02 - Livelihoods	465,883	470,850	-4,966
PO03 - Multi-purpose Cash	2,174,249	2,229,796	-55,547
PO04 - Health	754,129	680,184	73,945
PO05 - Water, Sanitation & Hygiene	622,712	660,535	-37,823
PO06 - Protection, Gender and Inclusion	24,894	31,393	-6,499
PO07 - Education	186,030	140,625	45,405
PO08 - Migration	478	478	0
PO09 - Risk Reduction, Climate Adaptation and Recovery	86,951	86,951	0
PO10 - Community Engagement and Accountability	25,144	3,395	21,750
PO11 - Environmental Sustainability	0	0	0
Planned Operations Total	4,342,666	4,306,572	36,094
EA01 - Coordination and Partnerships	1,755	29,917	-28,162
EA02 - Secretariat Services	349,339	277,727	71,612
EA03 - National Society Strengthening	586,452	652,804	-66,353
Enabling Approaches Total	937,545	960,448	-22,903
Grand Total	5,280,212	5,267,020	13,191

III. Operating Movement & Closing Balance per 2025/08

Opening Balance	0
Income (includes outstanding DREF Loan per IV.)	5,295,412
Expenditure	-5,267,020
Closing Balance	28,391
Deferred Income	0
Funds Available	28,391

IV. DREF Loan

* not included in Donor Response	Loan :	741,002	Reimbursed :	741,002	Outstanding :	0
----------------------------------	--------	---------	--------------	---------	---------------	---

Operational Strategy

FINAL FINANCIAL REPORT

Selected Parameters			
Reporting Timeframe	2022/4-2025/8	Operation	MDRLK014
Budget Timeframe	2022/4-2023/12	Budget	APPROVED

Prepared on 24 Sep 2025

All figures are in Swiss Francs (CHF)

MDRLK014 - Sri Lanka - Complex Emergency

Operating Timeframe: 16 Apr 2022 to 31 Dec 2023; appeal launch date: 08 Jun 2022

V. Contributions by Donor and Other Income

Income Type	Cash	InKind Goods	InKind Personnel	Other Income	TOTAL	Deferred Income
Opening Balance					0	
American Red Cross	270,091				270,091	
Australian Red Cross (from Australian Government*)	228,460				228,460	
Austrian Red Cross	49,803				49,803	
British Red Cross	89,679				89,679	
British Red Cross (from British Government*)	2,043,879				2,043,879	
European Commission - DG ECHO	205,035				205,035	
German Red Cross			15,200		15,200	
Hewlett Packard Co. Foundation	46,841				46,841	
Hong Kong Red Cross, Branch of the Red Cross Socie	24,308				24,308	
Japanese Government	987,560				987,560	
Japanese Red Cross Society	35,112				35,112	
On Line donations	3,962				3,962	
Red Cross of Monaco	29,180				29,180	
Swedish Red Cross	279,256				279,256	
The Canadian Red Cross Society	73,953				73,953	
The Canadian Red Cross Society (from Canadian Gov	589,222				589,222	
The Netherlands Red Cross (from Netherlands Govern	309,680				309,680	
The Republic of Korea National Red Cross	14,191				14,191	
Total Contributions and Other Income	5,280,212	0	15,200	0	5,295,412	0
Total Income and Deferred Income					5,295,412	0