



# SOUTH SUDAN



2025-2026 IFRC network country plan **extract**

Multi-Year Funding Requirement **CHF 45.4M**

6 February 2025

## In support of the South Sudan Red Cross



**21**

National Society branches



**120**

National Society local units



**19,785**

National Society staff



**261**

National Society volunteers

## People to be reached



**500,000**

Ongoing emergency operations



**100,000**

Climate and environment



**100,000**

Disasters and crises



**2.2M**

Health and wellbeing



**300,000**

Migration and displacement



**67,000**

Values, power and inclusion

## IFRC network multi-year focus

### Emergency response

- Floods
- Population movement

### Longer term needs

- Multi-layered protracted crisis

### Capacity development

- Digital transformation
- Internal systems strengthening
  - Risk management
  - Resource mobilization
  - Branch development

## Key country data links

INFORM Severity rating

**Very high**

INFORM Climate Change Risk Index

**Very high**

Human Development Index rank

**192**

World Bank Population figure

**11.5M**

World Bank Population below poverty line

**82.3%**

Head of Delegation IFRC Country Cluster Delegation for South Sudan, Uganda & Tanzania, Juba

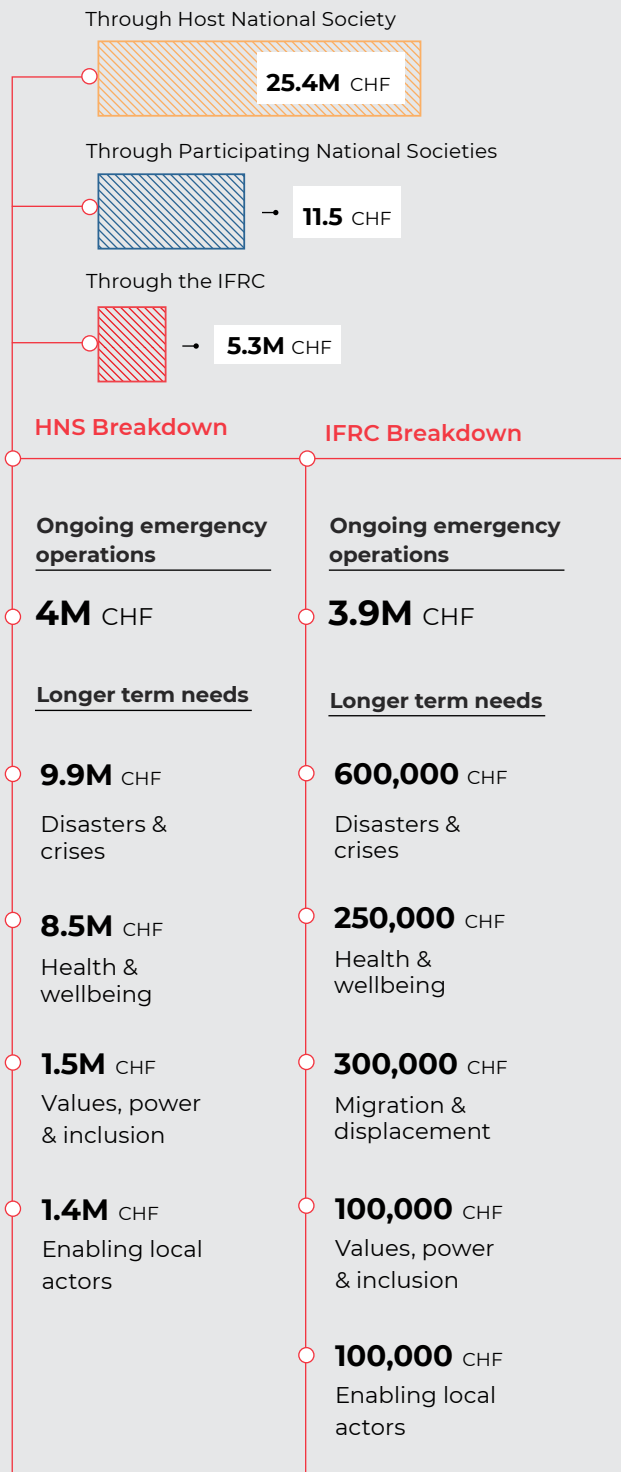
# Funding requirements

2025

2026

**Total 43.3M CHF**

**Total 2.1M CHF**



Through Participating National Societies

**2.1M CHF**

## Participating National Societies

Australian Red Cross\*

Finnish Red Cross

German Red Cross

The Netherlands Red Cross\*

Norwegian Red Cross

Saudi Red Crescent Authority\*

Swedish Red Cross

Swiss Red Cross

*\*National Societies which have contributed only multilaterally through the IFRC in the first half of 2024*

## IFRC Appeal codes

Emergency Appeals:

**MDRSS014** South Sudan Floods

**MDRS1001\*** Sudan Crisis Regional Population Movement

Longer-term needs:

**MAASS001**

*\*The revised funding requirement for this emergency is not yet available*

See back page for explanatory note on funding requirements

## Participating National Societies bilateral support for 2025

National Society name	Funding Requirement	Climate	Disasters and crises	Health and wellbeing	Migration	Values, power and inclusion	Enabling local actors
American Red Cross							
Danish Red Cross	2.5M						
Finnish Red Cross	2.5M		●	●	●	●	●
German Red Cross	1.3M		●	●			●
Netherlands Red Cross	2.3M	●					●
Norwegian Red Cross	480,000			●		●	●
Swedish Red Cross	1.3M	●	●	●		●	●
Swiss Red Cross	1.2M	●	●	●		●	●

Total Funding requirement **CHF 11.5M**

## Hazards



Food insecurity



Economic Hardship



Drought



Floods



Population movement



Conflict

# NATIONAL SOCIETY PROFILE

As per 2024 Plan. To be updated in full 2025 Plan, as per need

The **South Sudan Red Cross** was established by an act of Parliament in March 2012 and admitted to the International Federation of Red Cross and Red Crescent Societies (IFRC) in 2013. Formerly a part of the Sudanese Red Crescent Society, its staff and volunteers have decades of experience responding to emergencies, providing health services and promoting social inclusion. In its auxiliary role to public authorities during emergencies, the South Sudan Red Cross works closely with relevant government ministries, including the Ministry of Health and Ministry of Humanitarian and Disaster Management Affairs. This engagement is at both at national and state levels. The National Society maintains autonomy and acts in accordance with the Fundamental Principles of the International Red Cross and Red Crescent Movement.

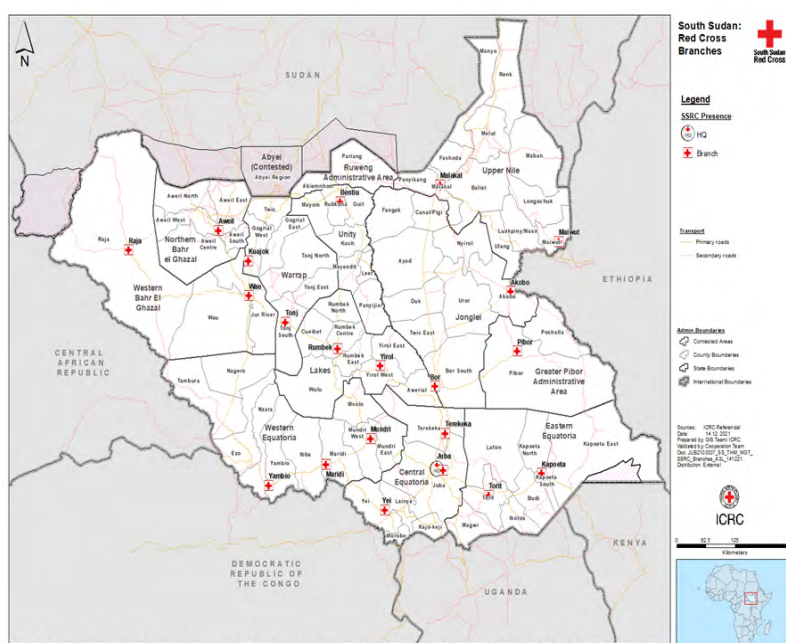
South Sudan Red Cross wide network of volunteers, 21 branches and 120 local units enables it to reach people in need across the country. There are teams in all the branches that are trained and equipped for emergencies and are capable of mobilizing volunteers to respond to both low and medium-level emergencies. According to recent reports, in 2022, South Sudan Red Cross assisted 76,000 people with emergency food and non-food items, 100,500 people with access to safe water thanks to the drilling and rehabilitation of boreholes, and installed 54 hand washing facilities. The National Society also provided cash transfers to over 6,000 people to help them meet their household needs in a dignified way, and 4,100 households received agricultural inputs. The National Society works to improve public awareness on health and to provide community-based services, empowering people to manage

their own health. It also advocates for a wider understanding and fuller application of the Fundamental Principles, by promoting social inclusion through all its activities and services.

In its Strategic Plan 2022-2026, the South Sudan Red Cross focuses on three strategic and two transformative goals:

- People mitigate the effects of climate change and preserve the environment by performing risk reduction and preparedness initiatives, and possess capacities to respond to disasters, conflicts, and other emergencies while ensuring food security and livelihoods
- People live healthy lives with access to health care and water, sanitation and hygiene facilities, and practice health promotion based on knowledge and changed attitudes
- People who are marginalized and vulnerable are included, protected, empowered and actively engaged in their communities
- A stronger National Society that is a trusted and accountable national actor, with increasingly well-functioning and self-reliant structures throughout the country
- A partner of choice acknowledged by partners and stakeholders for strong coordination and evidence-based communication and advocacy efforts on behalf of vulnerable populations

In 2023, the South Sudan Red Cross reached more than 37,000 people under its disaster response and early recovery programmes.



©ICRC 2024 The boundaries, names and designations used in this report do not imply official endorsement, nor express a political opinion on the part of the ICRC, and are without prejudice to claims of sovereignty over the territories mentioned.

The map does not imply the expression of any opinion on the part of the IFRC or the National Society concerning the legal status of a territory or its authorities



**The International Federation of Red Cross and Red Crescent Societies (IFRC)** is the world's largest humanitarian network, with 191 National Red Cross and Red Crescent Societies and around 16 million volunteers. Our volunteers are present in communities before, during and after a crisis or disaster. We work in the most hard to reach and complex settings in the world, saving lives and promoting human dignity. We support communities to become stronger and more resilient places where people can live safe and healthy lives, and have opportunities to thrive.

## About the plan

*This extract will be replaced by the full plan soon.*

The plan reflects the priorities of the host National Society, the IFRC and National Societies providing international support, for 2025 and subsequent years. It is aligned with IFRC [Strategy 2030](#), representing the collective ambitions of the IFRC membership, and is the result of a joint planning process and will serve for joint monitoring and reporting. It will be revised on an annual basis to adjust priorities and funding requirements to the needs in-country.

## Explanatory note on funding requirements and definitions

- The total funding requirements show what the IFRC network seeks to raise for the given year through different channels: funding through the IFRC, through participating National Societies as bilateral support, and through the host National Society from non-IFRC network sources. All figures should include the administrative and operational costs of the different entities
- Host National Society funding requirements not coming from IFRC network sources can comprise a variety of sources, as demonstrated when reporting on income in the [IFRC Federation-wide Databank and Reporting System](#)
- Participating National Society funding requirements for bilateral support are those validated by respective headquarters, and often represent mainly secured funding
- IFRC funding requirements comprise both what is sourced from the IFRC core budget and what is sought through emergency and thematic funding. This includes participating National Societies' multilateral support through IFRC, and all other IFRC sources of funding
- Figures for the years beyond 2025 most often represent partial requirements that are known at time of publication. Many National Societies have annual internal approval processes for funding requirements, and lower figures do not mean a decrease in funding requirements in future years
- Missing data and breakdowns: data may not be available from all IFRC network members for funding requirements. This may lead to inconsistencies across different reporting tools as well as potential under-estimation of the efforts led by all
- Reporting bias: the data informing this Federation-wide overview is self-reported by each National Society (or its designated support entity) which is the owner and gatekeeper, and responsible for accuracy and updating. IFRC tries to triangulate the data provided by the National Societies with previous data and other data in the public domain
- **Definitions:**
  - » **Local units:** ALL subdivisions of a National Society that coordinate and deliver services to people. These include ALL levels (provincial, state, city, district branches, sections or chapters, headquarters, and regional and intermediate offices, as well as community-based units)
  - » **Branches:** A Branch has its roles, responsibilities and relationship with the National Headquarters defined through the National Society's Statutes, including the level of autonomy given, especially in the area of its legal status, mobilising local resources and building local partnerships, and the decisions it makes. It has a local-level decision-making mechanism through its Branch members, board and volunteers, equally defined through the National Society's Statutes

## Additional information

- [IFRC network country plans](#) • [All plans and reports](#)
- Data on National Societies on [IFRC Federation-wide Databank and Reporting System](#)
- Live data on active emergency operations on [IFRC GO platform](#)
- Live data on [IFRC-Disaster Response Emergency Fund Response and Anticipatory pillars](#)
- [Evaluations and research databank](#) • [Donor response reports](#)

## Contact information

**South Sudan Red Cross**  
[www.ssdredcross.org](http://www.ssdredcross.org)

### Mohamed Babiker

Head of Delegation  
IFRC Country Cluster Delegation for  
South Sudan, Uganda & Tanzania, Juba  
[mohamed.babiker@ifrc.org](mailto:mohamed.babiker@ifrc.org)

### Louise Daintrey

Head of Strategic Engagement &  
Partnerships  
IFRC Regional Office for Africa, Nairobi  
T +254 110 843978  
[louise.daintrey@ifrc.org](mailto:louise.daintrey@ifrc.org)

### Sumitha Martin

Lead  
IFRC Global Strategic Planning &  
Reporting Centre  
New Delhi  
[sumitha.martin@ifrc.org](mailto:sumitha.martin@ifrc.org)