



OPERATION UPDATE

Togo | Population Movement

Emergency appeal №: MDRTG010 Emergency appeal launched: 16/11/2023 Operational Strategy published: 15/01/2024	Glide №: CE-2023-000033-TGO
Operation update #2 Date of issue: 03/02/2025	Timeframe covered by this update: From 15/01/2024 to 31/12/2024
Operation timeframe (with extension in this Operations Update): 28 months (14/03/2023 – 30/06/2025)	Number of people being assisted: 58,000
Funding requirements (CHF): CHF 4 million through the IFRC Emergency Appeal CHF 6 million Federation-wide	DREF amount initially allocated: CHF 500,000

This Operations update no. 2 seeks an extension of time to 30 June 2025, and additional funding to enable the Togolese Red Cross (TRC) meets ongoing and growing emergency needs in food, livelihoods, integrated Humanitarian Service Points (HSP) and WASH. To date, this Emergency Appeal, which seeks CHF 4,000,000 is only 25% funded (with CHF 500,000 DREF loan inclusive) and has been able to provide food parcel assistance, NFI support, Health, WASH and capacity strengthening of the TRC. Further funding contributions are needed to enable the National Society (NS), with the support of the IFRC, to continue with the preparedness efforts and provide humanitarian assistance and protection to people on the move.



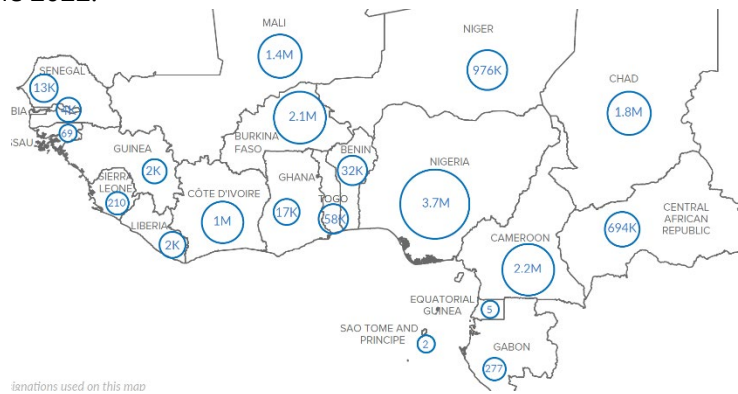
The Humanitarian Service point at the Regional Coordination of the Savanes Red Cross. TRC.

A. SITUATION ANALYSIS

Description of the crisis

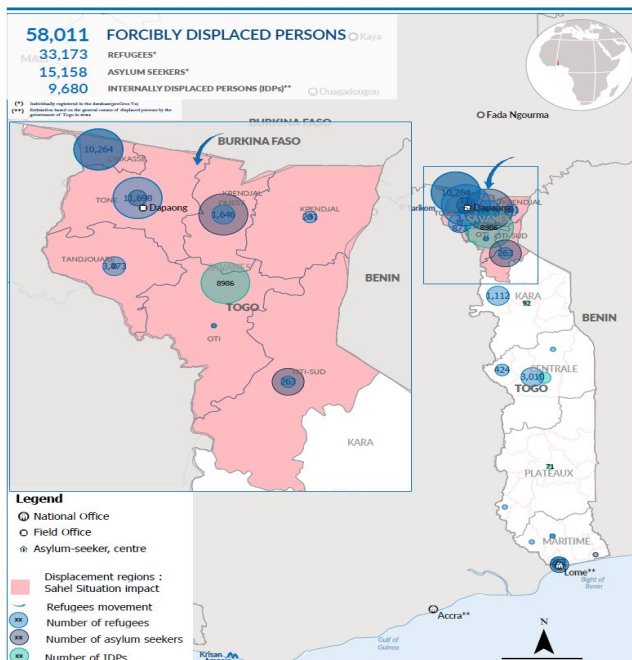
Over the last five years the protracted conflicts in the central Sahel region of northern Africa have created a sustained inflow of refugees from Burkina Faso into Savanes region of Togo, precipitating the emergence of IDPs in the Savanes region of Northern Togo. As a result of this continued crisis, the government of Togo declared a state of emergency in the northern Savanes in June 2022.

According to the UNHCR overview of forcibly displaced and stateless persons publication for December 2024, the total numbers of refugees and IDPs were estimated at 58,448 as depicted in the map in figure 1, a slight increase from the August 2024 figures which stood at 58,011 in figure 2. On Average, the majority of displaced persons are women constituting 82% of the total population. This poses greater challenges and risks to a population group which is already vulnerable from multiple challenges such as lack to basic services like health, WASH nutrition and livelihoods.



Legendations used on this map
 Figure 1 Overview of forcibly displaced and stateless persons, December 2024/UNHCR

The UNHCR monthly statistics/population trend below points to a continuation of the attacks on civilian population infrastructure, and aid convoys on the border between Burkina Faso and Togo. In 2024 people continued to flee into safe areas in Togo. Exacerbating the situation, access to farming and pasture lands, access



to health services, and access to education are very limited under these circumstances, deepening their exposure to food insecurity, malnutrition, and disease, a situation which will require humanitarian response well into 2025.

According to WFP county brief of November 2024, the northernmost Savanes region is the worst affected by emergency levels of acute food insecurity with an estimated 32% of the population currently facing crisis and emergency levels of acute food insecurity (IPC 3+). This prediction will further worsen the conditions of the refugees and IDPs if no urgent humanitarian action is taken. Even with a planned food pilot vouchers targeting 11,000 people in the Savanes region planned by WFP starting November 2024, the humanitarian food gap still remains.

Figure2: Map of Togo and Northern Savanes -showing forcible displaced persons-August 2024 /UNHCR

Following the declaration of a state of emergency in northern Savanes by the government of Togo, the IFRC and its network mobilized support to enable the TRC respond to the humanitarian crisis. The TRC received DREF support of CHF 500,000 through the IFRC to respond to the immediate needs of the affected population, targeting 10,000 people, including displaced and host communities in the localities of Kpendjal, Kpendjal-Ouest and Tône, with food assistance, water, hygiene and sanitation, as well as health services and protection.

This was done alongside and in complementarity with ICRC assistance, which was already underway targeting 9,800 people with essential household items (EHIs), medicines, and medical equipment in primary health care centres.

Summary of response

Overview of the host National Society and ongoing response

After the conclusion of a joint field assessment conducted by the TRC with the support of the IFRC, and the CHF 500,000 DREF support, the TRC was able to meet the immediate humanitarian needs of the displaced and host population. Funding from partners such as the European Commission-DG, Canadian, Japanese, Swiss, and German Red Cross Societies, Red Cross of Monaco, Saudi Arabia Red Crescent and support from ICRC has also increased the financial and human resources capacity of the TRC in responding to the needs of the affected populations. TRC has been responding to the needs of the affected populations.

With the available funds amounting to CHF 1,186,245.0025 (both multilateral and bilateral) the TRC has undertaken the following activities in its humanitarian response to the affected populations over the period covered by this operations update:

- Distribution of 3,000 impregnated mosquito nets to 1,500 households.
- Distribution of NFI kits to 1,300 targeted households.
- Distribution of food parcels to 3,251 targeted households, reaching approximately 19,506 people.
- Training and deployment of 100 volunteers in CEA feedback mechanism, PSEA, SGBV, Security, and Protection, WASH/Hygiene promotion and community-based surveillance.

- Training and deployment of 25 volunteers in emergency first aid.
- Deployment of DM, PMER, health lead, health assistant, accountant, and volunteers to support local branches with training and implementation.
- Deployment of TRC President to facilitate access to the zone.

As part of a Movement-wide approach, TRC collaborated with ICRC on conducting the needs assessment, registration of impacted individuals, EHI kit distribution to 1,400 households, repair/rehabilitation of 12 water pumps, and support to health centres in the region with medications.

The TRC has undertaken the following NS strengthening initiatives:

- Training on IFRC finance and procurement procedures for 18 TRC staff.
- PER rapid response capacity check, resulting in creation of a Plan of action for five prioritized preparedness actions. These actions include:
 - Develop and disseminate an emergency response structure (organigram) and SOPs, describing roles and responsibilities during an emergency response.
 - Develop and implement a monitoring and evaluation strategy for the operation.
 - Develop and disseminate a Volunteer Management Policy.
 - Update and disseminate the administrative, financial, and accounting procedures manual.
 - Develop and disseminate staff statutes/regulations.
- The creation of a PER technical group to follow the implementation of the action plan and maintain discussions on the recommendations that were not initially prioritized through the rapid response capacity check process.
- An assessment to identify the current needs and priorities of people on the move to inform the establishment of HSP. The assessment was preceded by a two-day training of 10 volunteers, and 04 supervisors. Data was collected from 100 displaced population households, 100 IDPs and 50 host communities.
- Procurement of office and computer equipment, shelter kits, hygiene kits and dignity kits for households
- Development of HSP service manual and set up of one HSP in Dapaong,
- Participation in external coordination meetings with IOM and WFP for migration and displaced populations and registration of IFRC as member of the migration component.
- Development of IEC advocacy material to create awareness on the needs of the displaced population and highlight the work of the TRCS.
- Integrated training of volunteers on HSP management, CEA, PSS, data collection and security, safer access, communication and media and protection of rights for migrant and displaced persons.

The German Red Cross supported the operation specifically funding the Emergency Health Assistance, Health, Risk Communication and Community Engagement (RCCE) and Protection Gender and Inclusion (PGI). With this funding, 100 volunteers have been trained in PGI, WASH, PSS, and latrines construction at the HSPs.

A procurement officer, an operations manager and a migration & displacement coordinator have been deployed by IFRC to support the response.

Needs analysis

A new census (registration) was completed by the *Programme d'urgence de renforcement de la resilience et de la sécurité des communautés (PURS)*, but the findings have not been published yet. The triggers for the displacement of population from the central Sahel conflict are still protracted and a solution is not foreseeable in the immediate to medium term, and therefore the needs of both host and displaced populations remain dire.

Through the TRC teams and volunteers and other partners presence and operating in the areas have confirmed the following growing needs have been identified:

1. Shelter: displaced communities continue to live in sub-standard shelter conditions, mostly makeshifts that deteriorate over time. After years of displacement these shelters require replacement of tarpaulins and reinforcement of its structure.
2. Basic needs and Livelihoods: displaced communities and a significant part of the host communities face daily challenges to access water and food. The northernmost Savanes Region is experiencing the most severe levels of acute food insecurity. In the November 2024 WFP country brief, a total of 175,063 people, which accounts for 32 percent of the population, are facing crisis and emergency levels of acute food insecurity (IPC 3+). This figure is projected to rise to 225,129 people by June–August 2025. Despite TRC’s investment in rehabilitation of boreholes and food provision, the need is still acute for many families. Livelihoods are mostly related with farming and livestock herding, but there are little to no opportunities for the displaced.
3. Health and Care: poor sanitation and access to hygiene in displacement camps have led to outbreaks of Dengue. The health services offered are minimal, scattered and mostly inaccessible to the displaced.
4. Protection: 85% of the displaced population are women and children. With poor shelter conditions and subject to survival coping mechanisms, this population is at risk of various protection issues, such as child labour, school dropouts, early marriage, and SGBV in some cases.
5. Humanitarian actors are providing much needed assistance in the affected region, however low funding means much more efforts are needed to address the growing needs.

In this scenario, it is fundamental that the NS maintains its operational capacity in the Savanes region, contributing to meeting the various persisting humanitarian needs.

Operational risk assessment

In addition to the operational constraints described in the operational strategy, including humanitarian access to the region for both local and international organizations, a low level of mobilized resources poses a risk to ensuring business continuity and covering all ever-increasing needs of displaced and host populations in the Savanes region. To date, only 25% of the funding required has been acquired by the IFRC through this emergency appeal.

B. OPERATIONAL STRATEGY

Update on the strategy


With the level of resources available through the appeal, the focus of TRC in implementing the operational strategy has been on addressing food needs and establishing HSPs where displaced populations can access a diverse range of humanitarian support and services, regardless of their status. This focus allows for the integration of some of the priority actions described in other sectors of the response to be integrated in a coordinated manner into the cross-cutting migration approach, to provide urgent and immediate assistance and protection to people in need.

This strategy is also in response to the identified food insecurity crisis by WFP country brief for November 2024 which states that 175,063 people (i.e., 32 percent of the population) are facing crisis and emergency levels of acute food insecurity (IPC 3+). This figure is projected to rise to 225,129 people by June–August 2025. The increased vulnerabilities from the displacements and loss of livelihoods opportunities means that this population at risk will require food assistance to meet their needs. The limited access and low funding have also impacted on the ability of the TRC to deliver the required assistance to the displaced population. This operation update therefore seeks an additional 6-month extension until 30 June 2025. During this extension period, engagement and advocacy with the Government authorities will be scaled up to enable the TRC play its auxiliary role and humanitarian work to support communities (IDPs and Refugees) with humanitarian assistance. The following will be achieved:

1. Distribute food consisting of maize, beans and rice for the benefit of 3,000 households already identified in the prefecture of Cinkassé. This locality was identified and added as an area requiring emergency support for a population of 3,000 people made up of displaced persons and refugees, whose care situation remains critical because they have received no support from any organization to date. The Appeal had planned to assist this population with food supplies, including those from Kpendjal.
2. Deliver humanitarian assistance through the HSP once the government of Togo grants access to the field for the staff and volunteers of the TRC.
3. Engage partners to mobilize additional resources for most of the unmet needs which were identified in the needs and HSP assessment.
4. Continue monitoring the humanitarian situation in the Savanes region by the TRC through its local networks and provide guidance on further support to the displaced population, including deploying a senior staff who will be in permanent contact with the other actors and ICRC for security issues in the field during planning and implementation of activities in favour of the target beneficiaries.

C. DETAILED OPERATIONAL REPORT

STRATEGIC SECTORS OF INTERVENTION

 Shelter, Housing and Settlements		Female > 18: 3,944	Female < 18: 5,916
		Male > 18: 3,897	Male < 18: 5,684
Objective:	<i>Communities in disaster and crisis affected areas restore and strengthen their safety, wellbeing and longer-term recovery through shelter and settlement solutions</i>		
Key indicators:	Indicator	Actual	Target
	<i># of people reached with shelter assistance in the response period</i>	7,800	19,441

Activities implemented

Distribution of NFI kits (1,300 items distributed per household, 1 mat, 1 bucket, 1 kitchen kit consisting of 3 pots, 1 jerry cans of 20 litres, 2 mosquito nets, 1 bucket of 20 liters and 1 blanket per kit to 1,300 targeted households in Mandouri and Gnalé in Kpendjal prefecture, in Ponio and Tamboaga in Kpendjal-Ouest prefecture, and in Nassablé, Carnaval and Korbongou in Tône prefecture. This is in addition to the households reached through ICRC EHI kits.

Activities planned

Given the level of resources available, and the complementarity of continued ICRC distribution of EHI kits in Kpendjal, Kpendjal-Ouest, and Tône prefectures, no further distribution of household NFI kits are planned. Should resources become available, TRC could distribute NFI kits to households who have not yet been reached in Cinkassé prefecture, according to the needs identified there.

As part of the Appeal, the prefecture of Cinkassé was identified and added as an area requiring emergency support for a population of 3,000 people made up of displaced persons and refugees, whose care situation remains critical to this day because they have received no support from any organization to date. The Appeal had planned to assist this population with food supplies, including those from Kpendjal. However, this activity was not carried out due to the security restrictions described above. This requested extension, once acquired, will make it possible this time to prioritize assistance with food kits for this population in this area. With the support of the IFRC, the NS will organize the purchase and delivery of food to the people of Cinkassé.



Livelihoods

Female > 18:
11,832

Female < 18:
17,748

Male > 18:
11,368

Male < 18:
17,052

Objective:

Communities, especially in disaster and crisis affected areas, restore and strengthen their livelihoods

Key indicators:

Indicator

Actual

Target

of targeted households (and people) reached with food (in-kind)/CVA

3,251 HH
(19,506 people)

58,000

*# and % households receiving cash transfers/ vouchers from the RCRC are satisfied with the amount received
Satisfaction is measured on a Likert scale from 1-5, where 1 is least satisfied and 5 is most satisfied*

0

6,000

Activities implemented

TRC distributed 3,251 food parcels, reaching households in need in Nassablé, Carnaval and Korbongou in Tône prefecture, in Mandouri and Gnalé in Kpendjal prefecture, and in Ponio and Tamboaga in Kpendjal-Ouest prefecture.

Activities planned

TRC has not yet begun exploring the viability of cash transfers as a modality for assistance in the Savanes region, and ICRC is supporting in an assessment of cash readiness. While this process is undertaken, in-kind food distribution of hot meals, or referrals to existing services available are being explored as options within the HSP service offer. The results of the HSP assessment did not clearly identify livelihoods as a critical need, UN agencies like WFP have flagged livelihoods as a need given that the displaced populations have lost their basic livelihood sources and have no coping mechanism. Therefore, this intervention will still be retained and implemented once additional resources become available to complement the livelihoods interventions undertaken by ICRC.



Health & Care

(Mental Health and psychosocial support / Community Health / Medical Services)

Female > 18:
11,832

Female < 18:
17,748

Male > 18:
11,368

Male < 18:
17,052

Objective:

Strengthening holistic individual and community health of the population impacted through community level interventions and health system strengthening

Key indicators:

Indicator

Actual

Target

*# of people who receive mental health and psychosocial services in emergency situations from the RCRC
Psychosocial services include psychological first aid, linking people with psychological problems or resources and services, case management, psychological counselling, psychotherapy or other psychological interventions*

0

58,000

<i># of club 25 members engaged in peer-to-peer activities, and sporting games</i>	0	TBD
<i># of anti-drug abuse campaigns conducted</i>	0	TBD
<i># of vaccination teams supported for vaccine intensification campaigns</i>	0	TBD
<i># of NDRTs and volunteers trained on EPiC</i>	0	260
<i># of people reached with health promotion activities related to NCD management in emergencies</i>	0	58,000
<i># of eligible children mobilized for routine vaccination</i>	0	TBD
<i># of malnourished children screened and referred for therapeutic feeding</i>	0	TBD
<i># of pregnant women and lactating mothers who received CVA for supplementary feeding</i>	0	1,200
<i># of people reached with first aid and pre-hospital care by trained RCRC volunteers or staff in a crisis, disaster, or conflict Disaggregated by sex, disability, migrant/IDP/ refugee, and age where known (if limited age information, include 0-17, 18-64, 65+).</i>	0	TBD
<i># of CHWs trained and mobilized for health care service delivery</i>	0	100
<i># of medical outreach sessions conducted</i>	0	10
<i># of first aid posts established and equipped</i>	0	10
<i># of people reached with epidemic prevention and control activities/health promotions as a response to an emergency by community-based volunteers Health promotion' and CBHFA – community-based health and first aid - include non-hardware WASH, sexual and reproductive health, family planning promotion, nutrition and breastfeeding promotion, and immunization promotion</i>	0	58,000

Activities implemented

There have been no achievements in the listed indicators due to lack of funding for the activities highlighted. However, the following were achieved based on earmarked funding

- Distribution of 3,000 impregnated mosquito nets to 1,500 vulnerable households.
- Training and deployment of 100 volunteers for community-based surveillance and 25 volunteers for emergency first aid.
- Training of 100 volunteers in PSS.

Activities planned

The following health and care activities have been incorporated into Humanitarian Service Point (HSP) service offer, based on the assessment report of the HSP. Some items such as dignity and hygiene kits were procured in May 2024, however distribution is planned once the access to the field is granted by the Togolese authorities:

- Psychosocial support services and referrals
- Sensitization and referrals for childhood vaccination
- Health promotion activities
- Malnutrition screening and referrals for therapeutic feeding
- Emergency first aid by trained TRC volunteers

The need for mental health and psychosocial support services in particular has been identified both through partner agencies and needs assessments, and a strong focus will be placed on PFA and PSS within the HSPs. Community-based MHPSS services will be considered among the social cohesion activities within the migration activities. In areas where Mothers' Clubs, Papa Champions, and Club 25 groups exist, the involvement of these groups will be important to successful implementation of social cohesion and community-based activities. Other health and care activities including establishing first aid posts, training CHWs, and distributing impregnated mosquito nets to areas not previously covered will be explored as resources become available.



Water, Sanitation and Hygiene

Female > 18:
11,832

Female < 18:
17,748

Male > 18:
11,368

Male < 18:
17,052

Objective: *Ensure safe drinking water, proper sanitation, and adequate hygiene awareness of the communities during relief and recovery phases of the Emergency Operation, through community and organizational interventions*

Key indicators:	Indicator	Actual	Target
	<i># of people targeted for WASH assistance in the response phase</i>	0	58,000
	<i># of households that have received hygiene and dignity kits</i>	0	3,000
	<i># of people reached with hygiene promotion messages</i>	No data	58,000
	<i># of community sanitation campaigns conducted</i>	1	12

Activities implemented

- TRC trained and deployed 100 volunteers in WASH/Hygiene promotion.
- Latrine construction in the HSP site to provide services to persons visiting the points.
- WASH needs still remain critical among the target population, however under this appeal there has been no significant funding to cover the planned activities.

Activities planned

Training on menstrual hygiene and fabricating reusable hygiene products is planned in Dapaong for 30 women from across the prefectures of Kpendjal, Kpendjal-Ouest and Tône. This training will also be used as an opportunity to engage the community in defining the eligibility criteria for 200 women to receive female hygiene kits.

Hygiene promotion and distribution of chlorine tablets will be incorporated into HSP service offer based on the results of the assessment.

While the need has been identified for WASH hardware interventions, including building boreholes to meet pressing water needs in the Savanes region, these interventions are not feasible with the current level of resources available.



Protection, Gender and Inclusion

Female > 18: 11832	Female < 18: 17748
Male > 18: 5684	Male < 18: 8526

Objective: *Communities identify the needs of the most at risk and particularly disadvantaged and marginalized groups, due to inequality, discrimination and other non-respect of their human rights and address their distinct needs*

	Indicator	Actual	Target
Key indicators:	<i># of people reached by protection, gender, and inclusion services</i>	No Data	58,000
	<i># of protection incidents (SGBV, child protection, or other) reported via the IFRC protection monitoring report</i>	0	TBD
	<i># of referrals made (SGBV, child protection, or other) via a common referral pathway</i>	0	TBD
	<i># of children reunified with their families</i>	0	TBD
	<i># of PGI booklets reproduced and distributed to volunteers</i>	0	1,000

Activities implemented

Training of 100 volunteers in PSEA and SGBV: the trained volunteers are intended to work within the IDP, humanitarian service points and refugee population sensitizing on violence prevention, antitrafficking and prevention of sexual abuse and exploitation.

Activities planned

SGBV has been identified as an issue of concern through needs assessments and through partner agencies working in the area. As such, there will be a strong focus on reinforcing PGI capacities among HSP volunteers, ensuring minimum PGI standards are met, integration of RFL, sensitization on IHL, and the provision of PFA and safe and secure referrals at HSPs. A PGI focal point for the Savanes region will be identified and trained.

Additional resources are needed to create IEC materials for staff and volunteers on PGI-related topics such as violence prevention, anti-trafficking, and preventing sexual exploitation and abuse.



Migration

Female > 18:
2,999

Female < 18:
3,121

Male > 18: 2,352

Male < 18: 3,528

Objective:

Communities support the needs of migrants and their families and those assisting migrants at all stages of migration (origin, transit and destination)

Key indicators:

Indicator

Actual

Target

of people reached through humanitarian service points (migrants and displaced people)

0

TBD

of people reunited with their families through RFL services

0

TBD

Activities implemented

Since the last operations update, a needs and feasibility assessment on HSP was carried out to gather information to understand the current needs and priorities of people on the move, as part of the population movement before settling the HSPs. In preparation for the assessment, the following have been conducted:

- development of an evaluation protocol,
- development of data collection tools into Kobo Collect,
- organization of a two-day training for the survey teams on data collection tools (10 volunteers and 04 supervisors);
- data collection in the field (in Tône and Mandouri), from 250 households (including 100 IDPs, 100 displaced people and 50 host families), authorities and other humanitarian actors and the production of the evaluation report.

The results of the evaluation, after confirming the relevance and necessity of the implementation of HSPs in the Savannah region, have retained the following elements as priority needs of displaced persons: health, food, shelter, and protection (PSS, RFL, SGBV, etc.).

After consultation with all stakeholders, in particular the ANPC, TRC has decided, according to its capacities, to install a fixed HSP at the headquarters of its branch in Dapaong.

Finalization of the HSP manual: After the inputs of the various departments of TRC on the first draft of the HSP manual, review and consolidation were done during a working meeting in the presence of all stakeholders. As a result, a final version of the HSP manual was produced.

Activities planned

Following the needs assessment and the set-up of a HSP, the volunteers will continue to offer the following services directly to the beneficiaries: information as aid, RLF, PSS, and also the distribution of hygiene and dignity kits. The other needs identified will be reliably referenced to the appropriate actors and partners, previously listed.

Enabling approaches



National Society Strengthening

Objective:	<i>Communities in high-risk areas are prepared for and able to respond to disaster</i>		
	Indicator	Actual	Target
Key indicators:	<i># of volunteers working on the project with health, accident, and death insurance</i>	0	400
	<i># of NDRTs deployed to support the Emergency Response in the affected provinces</i>	0	4

Activities implemented

To enhance longer-term preparedness and response capacities, a PER rapid response capacity check was conducted. As a result of this process, 25 corrective actions were identified to strengthen TRC's preparedness for effective response, of which 5 actions were prioritized in a PER Plan of action for 2024. TRC created a PER technical group to follow the progress on these 5 actions:

- Develop and disseminate an emergency response structure (organigram) and SOPs, describing roles and responsibilities during an emergency response.
- Develop and implement a monitoring and evaluation strategy for the operation.
- Develop and disseminate a Volunteer Management Policy.
- Update and disseminate the administrative, financial, and accounting manual of procedures.
- Develop and disseminate staff statutes/regulations.

A joint IFRC-TRC inventory of the warehouse in Tsevie was conducted, and recommendations for its rehabilitation were presented to TRC management.

All Movement components are also providing bilateral support to TRC in further strengthening its national society.

Activities planned

Achievements in NSD reflect TRC's commitment to building a stronger and more responsive National Society, with a focus on developing a long-term Master NSD Action Plan. To support this plan, and to continue accompanying the PER technical group as it progresses through its action plan, IFRC plans to recruit a NSD officer to be based in Lomé and to deploy a NSD in Emergencies delegate for 03 months.

To safeguard the well-being of TRC volunteers, protective items such as raincoats, boots, and personal protective equipment will be procured. The NDRT training needs to be refreshed before deploying NDRTs.



Coordination and Partnerships

Objective:	<i>Communities in high-risk areas are prepared for and able to respond to disaster</i>		
Key indicators:	Indicator	Actual	Target
	<i># of external partnership meetings attended supporting the National Society in the response</i>	15	5
	<i># of regular coordination mechanisms conducted with all Movement partners</i>	1	2

Activities implemented

- Operational taskforce meetings with Movement partners have been initiated by TRC, chaired by the Disaster M and co-chaired by the Coordinator for the Savanes Region. Regular communication among Movement components still can be further strengthened.
- Participation in humanitarian coordination meetings, in logistics cluster meetings, meetings with actors at the regional level, meetings with potential funders, and meetings with government and military authorities.

Activities planned

TRC will convene a mini-summit for the components of the Movement to come together to define the key parameters of its collective response and how the Movement will work together to address the humanitarian needs of the displaced and host populations in the Savanes region. Following the mini-summit, a decision table and a tripartite (TRC-ICRC-IFRC) joint statement will be shared with the wider Movement and external partners.



Secretariat Services

Objective:	<i>Communities in high-risk areas are prepared for and able to respond to disaster</i>		
Key indicators:	Indicator	Actual	Target
	<i>Global and regional surge</i>	3	7
	<i>Federation-wide reporting framework set up by PMER</i>	1	1
	<i>Risk register set up, mitigation measures identified and monitored once per month.</i>	1	Monthly
	<i>Communications support provided - communication working group for Movement members in country (TRC, ICRC & IFRC) will be activated and coordinated</i>	0	1
	<i># of updated security assessments by province</i>	0	1

Activities implemented

- Provision of technical support in PER, NSD, Migration & Displacement, Procurement & Logistics, Partnership Engagement & Resource Mobilization, Security, CEA, PMER, Communications, and Operations.
- 1 surge deployment, 2 staff-on-loan, and 3 missions from the country cluster delegation.
- Joint TRC-IFRC liaison with key external stakeholders and donors for continued strategic positioning of the operation itself and of TRC's unique added value.
- Ongoing work with TRC to strengthen its ability to meet the requirements of the project granting agreement.
- Ongoing support to TRC in local procurement activities.
- Communication key messages were developed, with additional social media activity for the appeal.

Activities planned

- Support TRC in aligning M&E plan and data collection tools with operational strategy indicators and PGI minimum standards.



Community Engagement and Accountability

Objective:	<i>Communities in high-risk areas are prepared for and able to respond to disaster</i>		
	Indicator	Actual	Target
Key indicators:	<i># and % of complaints or feedback about the RCRC operation which receive a response through established community communication</i>	0	TBD
	<i>% of community members who feel the support provided by the programme is helping them to become more self-reliant/live without support in the future</i>	This data will be collected for end of project	80%
	<i>% of people surveyed who report receiving useful and actionable information through different trusted channels</i>	0	TBD
	<i># of live call-in radio sessions conducted</i>	0	50
	<i># of radio and TV slots for jingles</i>	0	40
	<i># of targeted advocacy campaigns conducted</i>	0	40
	<i># of branches that conducted a perception survey</i>	0	12
	<i># of paid media adverts engaged</i>	0	5

Activities implemented

- Training and deployment of 100 volunteers in CEA feedback mechanism, however feedback tool has not yet been put in place.
- There is however limited level of implementation due to the limited financing to meet planned targets and activities.

Activities planned within HSPs

- Engaging female community members in defining the eligibility criteria for female hygiene kits distribution.
- Developing SOPs for community feedback mechanism for HSPs will be important to their implementation. To ensure a high level of quality in CEA actions within the cross-cutting migration approach, a CEA focal point for the Savanes region will be identified and trained.

Additional resources are needed for media activities.

D. FUNDING

The IFRC Appeal supports the Togolese Red Cross raising resources to deliver the activities set out in its Plan of action. A summary of pledges to the appeal, including the DREF loan of CHF 500,000 can be found below. As at date, the appeal is 25% funded with the CHF 500,000 DREF loan and 12% (CHF 480,245) without the DREF loan. The operation also received bilateral funding of CHF 206,000 (EUR220,000) from the German Red Cross funded under the German Ministry of foreign affairs.

Donor	Earmarking	Pledge (CHF)	Remarks
Multilateral IFRC Secretariat Funding – ask CHF 4 000 000			
DREF Loan	Unearmarked	500,000	Registered
Japanese Red Cross	Unearmarked	29,946	Registered
Red Cross of Monaco	Unearmarked	9,357	Registered
Swiss Red Cross	Migration and NSD	193,000	Registered
Canadian Red Cross		102,135	Registered
Saudi Arabia Red Crescent		42,619	Registered
European Commission- DG		105,358	Registered
<i>Sub-total – Multilateral funding</i>		982,415	25%
Bilateral Contributions – ask CHF 2 000 000			
<i>Sub-total – Bilateral funding (German Red Cross)</i>		206,000	
Total Federation-Wide Funding – ask CHF 6 000 000			
<i>Total federation-wide funding</i>		1,188,415	20%

Contact information

For further information, specifically related to this operation please contact:

In the Togolese Red Cross

- **Secretary General:** Gérard Agbéko Koffi EGAH, gekamann@yahoo.fr, +228 97051607
- **Operational coordination:** Dr ASSIH M. Essoyodina, Disaster Management, essoyodina@gmail.com, +228 90249378

In the IFRC

- **IFRC Regional Office for Africa DM coordinator:** Rui Alberto OLIVEIRA, Manager Preparedness and Response, rui.oliveira@ifrc.org, +254 780422276
- **IFRC Country Cluster Support Team:** Bhupinder TOMAR, Operations Coordinator, bhupinder.tomar@ifrc.org, +234 8186730823
- **IFRC Country Cluster Support Team:** Francis Innocent SALAKO, Operations Coordinator, francis.salako@ifrc.org, +234 9087351968

For IFRC Resource Mobilization and Pledges support:

- **IFRC Regional Office for Africa:** Louise Daintrey, Regional Head, Strategic Partnerships and Resource Mobilization, email: louise.daintrey@ifrc.org, phone: +254 110 843978
- **IFRC Country Cluster Delegation:** Judith Agada, Strategic Engagement and Resource Mobilization Officer, judith.agada@ifrc.org, +234 908 8394395

For Performance and Accountability support (planning, monitoring, evaluation, and reporting enquiries)

IFRC Regional Office for Africa: Beatrice Atieno Okeyo, Head of PMER & QA, email: beatrice.okeyo@ifrc.org, phone: +254 732404022

Reference documents



Click here for:

- [Operational Strategy](#)
- [Emergency Appeal](#)
- [DREF Operation Update 2](#)
- [DREF Operation Update 1](#)
- [DREF Operation](#)

How we work

All IFRC assistance seeks to adhere the **Code of Conduct** for the International Red Cross and Red Crescent Movement and Non-Governmental Organizations (NGO's) in Disaster Relief, the **Humanitarian Charter and Minimum Standards in Humanitarian Response (Sphere)** in delivering assistance to the most vulnerable, to **Principles of Humanitarian Action** and **IFRC policies and procedures**. The IFRC's vision is to inspire, encourage, facilitate and promote at all times all forms of humanitarian activities by National Societies, with a view to preventing and alleviating human suffering, and thereby contributing to the maintenance and promotion of human dignity and peace in the world.

Disaster Response Programme Report

Total figures (appeal coded plus pledge coded)

MDRTG010 - Togo - Population Movement Savannah region

Appeal Launch Date: 04 Dec 23

Appeal Timeframe: 09 Mar 23 to 31 Dec 24

INTERIM

Selected Parameters

Reporting Timeframe	2023/03-2024	Programme	MDRTG010
Budget Timeframe	2023/03-2025	Budget	APPROVED
Split by funding source	N	Project	*
Subsector	*		

All figures are in Swiss Francs (CHF)

I. Funding

	Raise humanitarian standards	Grow RC/RC services for vulnerable people	Strengthen RC/RC contribution to development	Heighten influence and support for RC/RC work	Joint working and accountability	TOTAL	Deferred Income
A. Budget			380,956			380,956	
B. Opening Balance							
Income							
Cash contributions							
08.12.2023 M2312019	The Canadian Red Cross Society		102,135			102,135	
15.01.2024 M2401045	Red Cross of Monaco		9,357			9,357	
17.01.2024 M2401092	European Commission - DG ECHO		105,358			105,358	
19.01.2024 M2312108	Japanese Red Cross Society		29,946			29,946	
26.02.2024 M2402016	Swiss Red Cross		193,000			193,000	
30.07.2024 M2407002	Saudi Arabian Red Crescent Society		42,619			42,619	
C1. Cash contributions			482,415			482,415	
Other Income							
	DREF Response Pillar		500,000			500,000	
C4. Other Income			500,000			500,000	
C. Total Income = SUM(C1..C4)			982,415			982,415	
D. Total Funding = B + C			982,415			982,415	

II. Movement of Funds

	Raise humanitarian standards	Grow RC/RC services for vulnerable people	Strengthen RC/RC contribution to development	Heighten influence and support for RC/RC work	Joint working and accountability	TOTAL	Deferred Income
B. Opening Balance							
C. Income			982,415			982,415	
E. Expenditure			-804,482			-804,482	
F. Closing Balance = (B + C + E)			177,933			177,933	

III. Expenditure

Account Groups	Budget	Expenditure					TOTAL	Variance
		Raise humanitarian standards	Grow RC/RC services for vulnerable people	Strengthen RC/RC contribution to development	Heighten influence and support for RC/RC work	Joint working and accountability		
	A					B	A - B	
BUDGET (C)						380,956		
Relief items, Construction, Supplies								
Clothing & Textiles	18,120			17,583		17,583	537	
Food	115,790			80,364		80,364	35,425	
Seeds & Plants				78		78	-78	
Water, Sanitation & Hygiene	49,606			38,594		38,594	11,012	
Medical & First Aid				2		2	-2	
Teaching Materials	1,087						1,087	
Other Supplies & Services	43,488			46,231		46,231	-2,743	
Total Relief items, Construction, Sup	228,091			182,853		182,853	45,238	
Land, vehicles & equipment								
Computers & Telecom				1,146		1,146	-1,146	
Total Land, vehicles & equipment				1,146		1,146	-1,146	

*

Disaster Response Programme Report

Total figures (appeal coded plus pledge coded)

MDRTG010 - Togo - Population Movement Savannah region

Appeal Launch Date: 04 Dec 23

Appeal Timeframe: 09 Mar 23 to 31 Dec 24

INTERIM

Selected Parameters			
Reporting Timeframe	2023/03-2024	Programme	MDRTG010
Budget Timeframe	2023/03-2025	Budget	APPROVED
Split by funding source	N	Project	*
Subsector	*		

All figures are in Swiss Francs (CHF)

III. Expenditure

Account Groups	Budget	Expenditure					TOTAL	Variance
		Raise humanitarian standards	Grow RC/RC services for vulnerable people	Strengthen RC/RC contribution to development	Heighten influence and support for RC/RC work	Joint working and accountability		
	A					B	A - B	
BUDGET (C)						380,956		
Logistics, Transport & Storage								
Distribution & Monitoring	12,080							12,080
Transport & Vehicles Costs	4,530			16,818		16,818		-12,288
Logistics Services				514		514		-514
Total Logistics, Transport & Storage	16,610			17,332		17,332		-722
Personnel								
International Staff	18,120			138,242		138,242		-120,122
National Staff				10,878		10,878		-10,878
National Society Staff	6,735			4,363		4,363		2,371
Volunteers	30,713			17,400		17,400		13,314
Total Personnel	55,568			170,884		170,884		-115,316
Consultants & Professional Fees								
Professional Fees	1,510							1,510
Total Consultants & Professional Fees	1,510							1,510
Workshops & Training								
Workshops & Training	16,006			29,292		29,292		-13,286
Total Workshops & Training	16,006			29,292		29,292		-13,286
General Expenditure								
Travel	16,610			77,158		77,158		-60,548
Information & Public Relations	755			3,597		3,597		-2,842
Office Costs				12,520		12,520		-12,520
Communications	831			2,866		2,866		-2,035
Financial Charges	378			4,553		4,553		-4,175
Other General Expenses	21,348			2,440		2,440		18,908
Shared Office and Services Costs				300		300		-300
Total General Expenditure	39,921			103,432		103,432		-63,512
Contributions & Transfers								
National Society Expenses				248,096		248,096		-248,096
Contributions				2,500		2,500		-2,500
Total Contributions & Transfers				250,596		250,596		-250,596
Indirect Costs								
Programme & Services Support Recover	23,251			48,947		48,947		-25,696
Total Indirect Costs	23,251			48,947		48,947		-25,696
TOTAL EXPENDITURE (D)	380,956			804,482		804,482		-423,526
VARIANCE (C - D)				-423,526		-423,526		

Disaster Response Programme Report**Total figures (appeal coded plus pledge coded)**

MDRTG010 - Togo - Population Movement Savannah region

Appeal Launch Date: 04 Dec 23

Appeal Timeframe: 09 Mar 23 to 31 Dec 24

INTERIM

Selected Parameters

Reporting Timeframe	2023/03-2024	Programme	MDRTG010
Budget Timeframe	2023/03-2025	Budget	APPROVED
Split by funding source	N	Project	*
Subsector	*		

All figures are in Swiss Francs (CHF)

IV. Sector breakdown

Sector / Sub-sector	Annual Budget	Opening Balance	Income	Funding	Expenditure	Closing Balance	Deferred Income
Disaster Management							
Disaster risk reduction	380,956		982,415	982,415	804,482	177,933	
Total Disaster_Management	380,956		982,415	982,415	-804,482	177,933	
GRAND TOTAL	380,956		982,415	982,415	804,482	177,933	

Disaster Response Programme Report**Pledge coded only**

MDRTG010 - Togo - Population Movement Savannah region

Appeal Launch Date: 04 Dec 23

Appeal Timeframe: 09 Mar 23 to 31 Dec 24

INTERIM

Selected Parameters

Reporting Timeframe	2023/03-2024	Programme	MDRTG010
Budget Timeframe	2023/03-2025	Budget	APPROVED
Split by funding source	N	Project	*

All figures are in Swiss Francs (CHF)

I. Funding

	Raise humanitarian standards	Grow RC/RC services for vulnerable people	Strengthen RC/RC contribution to development	Heighten influence and support for RC/RC work	Joint working and accountability	TOTAL	Deferred Income
A. Budget							
B. Opening Balance							
Income							
Cash contributions							
30.07.2024 M2407002 Saudi Arabian Red Crescent Society			42,619			42,619	
C1. Cash contributions			42,619			42,619	
Other Income							
C4. Other Income							
C. Total Income = SUM(C1..C4)			42,619			42,619	
D. Total Funding = B + C			42,619			42,619	

II. Movement of Funds

	Raise humanitarian standards	Grow RC/RC services for vulnerable people	Strengthen RC/RC contribution to development	Heighten influence and support for RC/RC work	Joint working and accountability	TOTAL	Deferred Income
B. Opening Balance							
C. Income			42,619			42,619	
E. Expenditure			0			0	
F. Closing Balance = (B + C + E)			42,619			42,619	

III. Expenditure

Account Groups	Budget	Expenditure					TOTAL	Variance
		Raise humanitarian standards	Grow RC/RC services for vulnerable people	Strengthen RC/RC contribution to development	Heighten influence and support for RC/RC work	Joint working and accountability		
	A					B	A - B	
BUDGET (C)							0	
TOTAL EXPENDITURE (D)							0	
VARIANCE (C - D)							0	