



# LEBANON



## 2025-2026 IFRC network country plan **extract**

Multi-Year Funding Requirement **CHF 197.20M**

20 January 2025

### In support of the Lebanese Red Cross Society



**32**

National Society branches



**204**

National Society local units



**406**

National Society staff



**12,902**

National Society volunteers

### People to be reached



**716,000**

Ongoing emergency operations



**2M**

Climate and environment



**150,000**

Disasters and crises



**2M**

Health and wellbeing



**150,000**

Migration and displacement



**2M**

Values, power and inclusion

### IFRC network multi-year focus

#### Emergency response

- Multi-layered humanitarian needs

#### Longer term needs

- Health • Disaster preparedness
- Community resilience • Climate change

#### Capacity development

- Effectiveness and internal systems
  - Volunteering
- Resource mobilization and financial sustainability

### Key country data links

INFORM Severity rating

**High**

INFORM Climate Change Risk Index

**Medium**

Human Development Index rank

**109**

World Bank Population figure

**5.4M**

World Bank Population below poverty line

**27.4%**

# Funding requirements

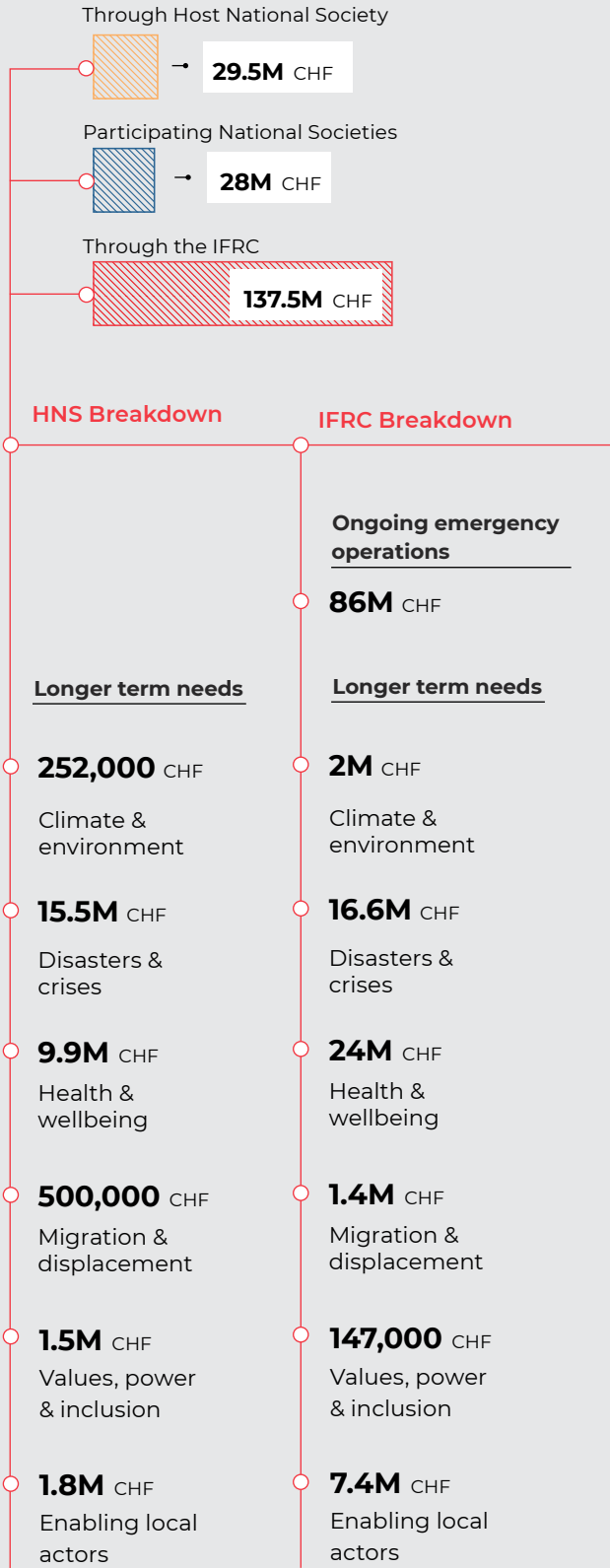
2025

2026\*\*

\*\*Projected funding requirements

**Total 195M CHF**

**Total 2.16M CHF**



Participating National Societies

**2.16M CHF**

## Participating National Societies

- American Red Cross\*
- Australian Red Cross\*
- Austrian Red Cross
- British Red Cross
- Bulgarian Red Cross\*
- Danish Red Cross
- French Red Cross
- German Red Cross
- Japanese Red Cross Society
- Norwegian Red Cross
- Qatar Red Crescent Society
- Red Cross of Monaco\*
- Spanish Red Cross
- Swedish Red Cross
- Swiss Red Cross
- The Canadian Red Cross Society
- The Netherlands Red Cross

*\*National Societies which have contributed only multilaterally through the IFRC in the first half of 2024*

See back page for explanatory note on funding requirements

## Participating National Societies bilateral support for 2025

National Society name	Funding Requirement	Climate	Disasters and crises	Health and wellbeing	Migration	Values, power and inclusion	Enabling local actors
Austrian Red Cross	1.9M	●	●	●			
British Red Cross	1.8M		●		●	●	●
Canadian Red Cross Society	3M			●		●	●
Danish Red Cross	4M		●	●		●	●
French Red Cross	3M	●		●			●
German Red Cross	2.9M	●	●	●		●	●
Japanese Red Cross Society	257,000		●	●			
Netherlands Red Cross	2.5M	●	●	●	●	●	●
Norwegian Red Cross	1.6M	●	●	●		●	●
Qatar Red Crescent Society	1.3M		●		●		
Spanish Red Cross	1.3M	●	●	●		●	●
Swedish Red Cross	2.5M	●	●				●
Swiss Red Cross	1.9M	●	●	●			●

Total Funding requirement **CHF 28.0M**

### Hazards



Economic hardship



Drought



Food insecurity



Fires



Population movement



Storms

### IFRC Appeal codes

Emergency Appeals:

**MDRS5002** Middle East Crises

**MDRLB017** Complex Humanitarian Crisis

Longer-term needs:

**MAALB001**

# NATIONAL SOCIETY PROFILE

*As per 2024 Plan. To be updated in full 2025 Plan, as per need*

The **Lebanese Red Cross** was established in 1945 as an auxiliary to public authorities, providing effective and efficient humanitarian assistance to vulnerable communities in Lebanon. It was admitted to the International Federation of Red Cross Red Crescent Societies (IFRC) in 1948. The National Society is the primary provider of ambulance care and blood transfusion services in the country, which are delivered free of charge to those in need. The National Society is also a major actor in the areas of disaster risk management and medico-social services. During the civil war in Lebanon, the National Society built a reputation providing neutral and impartial services to communities in the country and has continued to provide critical services during periods of unrest following the 2019 protest movement.

The Lebanese Red Cross has been responding to many crises in recent years and has made significant achievements. Since 2018, the National Society has provided services and humanitarian assistance to more than 475,000 people through its long-term services and development programmes. Through its disaster response and early recovery programmes, it has assisted more than 142,000 people in need of support in 2022. In 2023 alone, the Lebanese Red Cross responded to multiple needs linked to complex national and regional crises, and climate and health related hazards.

According to its most recent Strategic Plan 2021-2024, the Lebanese Red Cross identified five overarching operational priorities:

- Ensuring that victims of accidents, illnesses and major incidents receive prompt and effective pre-hospital emergency care
- Providing safe blood products to patients in Lebanon
- Improving access to quality health care services

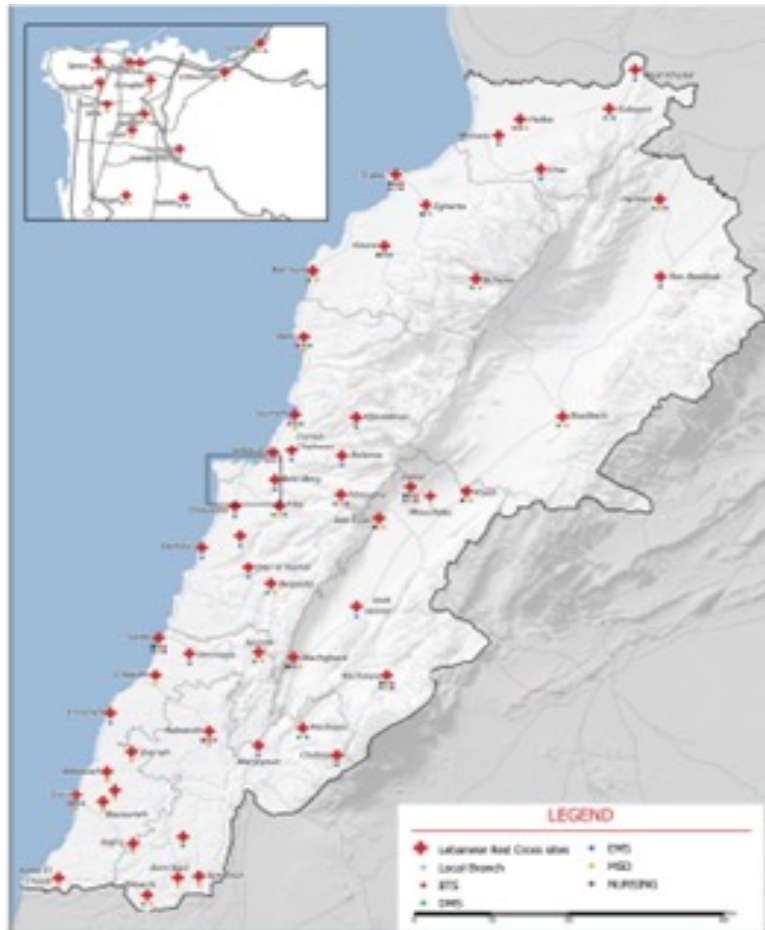
- Meeting the basic needs, including economic security, shelter, water, sanitation and hygiene of vulnerable people affected by disasters, crises, and emergencies
- Reducing the impact of disasters on the population through prevention and mitigation measures

The Strategic Plan also defines ten objectives for the development of the National Society, and three cross-cutting themes consisting of protection, gender and inclusion, community engagement and accountability, and social and environmental development.

The chief strength of the National Society consists in its excellent reputation which always provides the National Society with access to all parts of the country. The Lebanese Red Cross' provisioning of vital national service such as ambulance and blood transfusion give the National Society high visibility and makes it a key partner to authorities and other organizations. The National Society has a wide-ranging response capacity throughout the country which enables it to respond rapidly to disasters and crises.

In Lebanon, the Palestine Red Crescent Society is also active, in view of the specific needs of Palestinian refugees. The Palestine Red Crescent Society's Lebanese branch currently provides community-based health and first aid at eight refugee camps in Ain el Helwe, Mar Elias, Shatilla, Nahr el Bared, Baalbeck, Burj el Shamali, Albuss, and Tyr. The branch provides in-patient care across five hospitals, for internal medicine, intensive care, pediatric, gynecology, and obstetric services. The branch also provides emergency and other services in refugee camps and other Palestinian communities. Its aim is to support populations who have limited or no access to social and civil rights, public health and educational facilities, and public social services.

In 2023, the Lebanese Red Cross reached approximately 708,000 people through its long-term services and development programmes and 44,000 people through disaster response and early recovery programmes.



Map of Lebanese Red Cross branches

*The map does not imply the expression of any opinion on the part of the IFRC or the National Society concerning the legal status of a territory or its authorities*



**The International Federation of Red Cross and Red Crescent Societies (IFRC)** is the world's largest humanitarian network, with 191 National Red Cross and Red Crescent Societies and around 16 million volunteers. Our volunteers are present in communities before, during and after a crisis or disaster. We work in the most hard to reach and complex settings in the world, saving lives and promoting human dignity. We support communities to become stronger and more resilient places where people can live safe and healthy lives, and have opportunities to thrive.

### About the plan

*This extract will be replaced by the full plan soon.*

The plan reflects the priorities of the host National Society, the IFRC and National Societies providing international support, for 2025 and subsequent years. It is aligned with IFRC [Strategy 2030](#), representing the collective ambitions of the IFRC membership, and is the result of a joint planning process and will serve for joint monitoring and reporting. It will be revised on an annual basis to adjust priorities and funding requirements to the needs in-country.

### Explanatory note on funding requirements

- The total funding requirements show what the IFRC network seeks to raise for the given year through different channels: funding through the IFRC, through participating National Societies as bilateral support, and through the host National Society from non-IFRC network sources. All figures should include the administrative and operational costs of the different entities
- Host National Society funding requirements not coming from IFRC network sources can comprise a variety of sources, as demonstrated when reporting on income in the [IFRC Federation-wide Databank and Reporting System](#)
- Participating National Society funding requirements for bilateral support are those validated by respective headquarters, and often represent mainly secured funding
- IFRC funding requirements comprise both what is sourced from the IFRC core budget and what is sought through emergency and thematic funding. This includes participating National Societies' multilateral support through IFRC, and all other IFRC sources of funding
- Figures for the years beyond 2025 most often represent partial requirements that are known at time of publication. Many National Societies have annual internal approval processes for funding requirements, and lower figures do not mean a decrease in funding requirements in future years
- Missing data and breakdowns: data may not be available from all IFRC network members for funding requirements. This may lead to inconsistencies across different reporting tools as well as potential under-estimation of the efforts led by all
- Reporting bias: the data informing this Federation-wide overview is self-reported by each National Society (or its designated support entity) which is the owner and gatekeeper, and responsible for accuracy and updating. IFRC tries to triangulate the data provided by the National Societies with previous data and other data in the public domain

### Additional information

- [IFRC network country plans](#)
- [All plans and reports](#)
- Data on National Societies on [IFRC Federation-wide Databank and Reporting System](#)
- Live data on active emergency operations on [IFRC GO platform](#)
- Live data on [IFRC-Disaster Response Emergency Fund Anticipatory and Response pillars](#)
- [Evaluations and research databank](#)
- [Donor response reports](#)

### Contact Information

**Lebanese Red Cross Society**  
[www.redcross.org.lb](http://www.redcross.org.lb)

**Cristhian Cortez Cardoza**  
Deputy Regional Director  
Middle East and North Africa  
Regional Office, Beirut  
T +961 71802 926  
[cristhian.cortez@ifrc.org](mailto:cristhian.cortez@ifrc.org)

**Yara Yassine**  
Head of Strategic Partnerships  
& Resource Mobilization  
IFRC Regional Office for Middle East  
& North Africa, Beirut  
T +961 79 300 562  
[yara.yassine@ifrc.org](mailto:yara.yassine@ifrc.org)

**Sumitha Martin**  
Lead  
IFRC Global Strategic Planning &  
Reporting Centre  
New Delhi  
[sumitha.martin@ifrc.org](mailto:sumitha.martin@ifrc.org)