



Severe hail damage to residential roofs, Stepanavan. Photo credit: ARCS

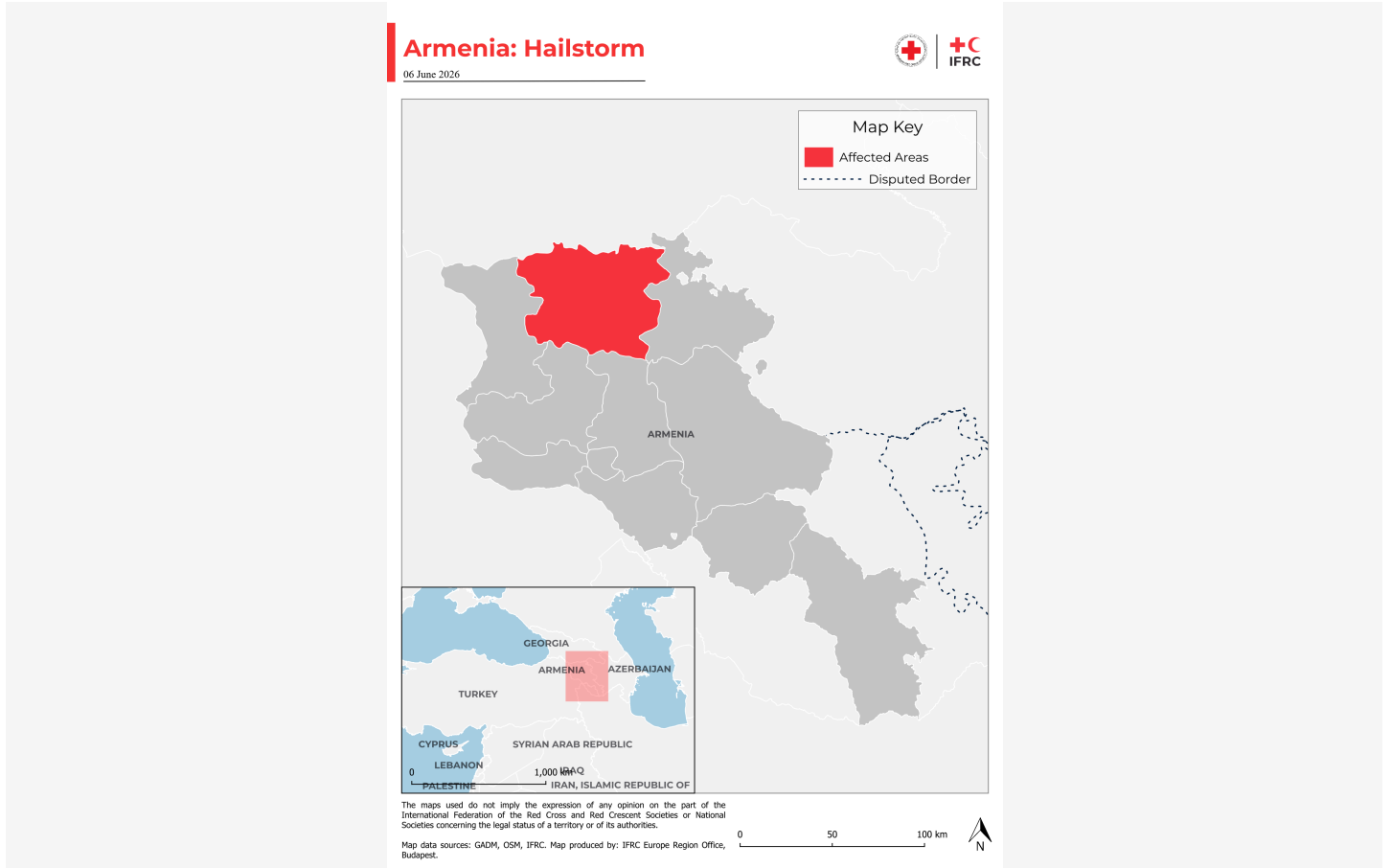
Appeal: <b>MDRAM018</b>	Hazard: <b>Other</b>	Country: <b>Armenia</b>	Type of DREF: <b>Response</b>
Crisis Category: <b>Yellow</b>	Event Onset: <b>Sudden</b>	DREF Allocation: <b>CHF 247,506</b>	
Glide Number: <b>ST-2026-000086-ARM</b>	People Affected: <b>3,000 people</b>	People Targeted: <b>1,550 people</b>	
Operation Start Date: <b>15-06-2026</b>	Operation Timeframe: <b>4 months</b>	Operation End Date: <b>31-10-2026</b>	DREF Published: <b>16-06-2026</b>

Targeted Regions: **Lori**

# Description of the Event

## Date of event

06-06-2026



Map of the affected areas by the hailstorm in Armenia

## What happened, where and when?

On 6 June 2026, at approximately 12:56 PM, a severe hailstorm struck the Stepanavan community and surrounding areas in Lori Region, northern Armenia. The hailstorm lasted approximately 15–20 minutes and was accompanied by exceptionally large hailstones, reportedly measuring between 4 and 6 centimetres in diameter. The intensity of the storm caused widespread damage to residential buildings, particularly roofs and windows, leaving many households exposed to weather conditions and subsequent rainfall. Significant damage was also reported to agricultural land, greenhouses, vehicles, public infrastructure, solar energy systems, and livestock.

The most affected areas were Stepanavan community and nearby settlements in the Lori Berd cluster, including Bovadzor, Lejan, Gyulagarak, and Lori Berd. The event affected both urban and rural populations, causing significant damage to housing, essential household assets, and community infrastructure. Damage to roofs and windows compromised minimum safe living conditions for many households and increased exposure to weather-related risks.

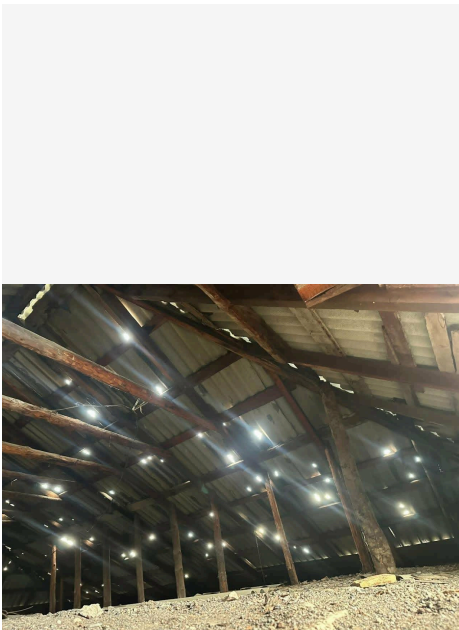
Armenia has experienced recurrent severe hailstorms over recent years, particularly affecting agricultural regions. Following previous events, anti-hail protection systems, including anti-hail stations and other mitigation measures, were installed in several rural areas of the country to reduce the impact on agricultural production. However, urban centres such as Stepanavan were not covered by these protection systems. As a result, the city and surrounding communities remained highly exposed to hail-related hazards, contributing to the extensive damage observed during this event. The absence of protective infrastructure, combined with the unusually large hailstones and concentrated impact area, resulted in extensive damage to roofs, windows, and essential household assets, compromising minimum safe living conditions for many affected households and creating urgent humanitarian needs.

Given the scale and severity of the impact, the Stepanavan Municipality requested support from the Armenian Red Cross Society (ARCS) to assist affected communities and support ongoing response efforts. Immediately following the event, the municipality activated the Community Emergency Response Group, of which ARCS is a member. ARCS joined local authorities and the Rescue Service in coordinating response efforts, conducting rapid assessments, and gathering information on the impact of the hailstorm. Initial activities focused on identifying affected households, documenting damages, and prioritizing urgent humanitarian needs.

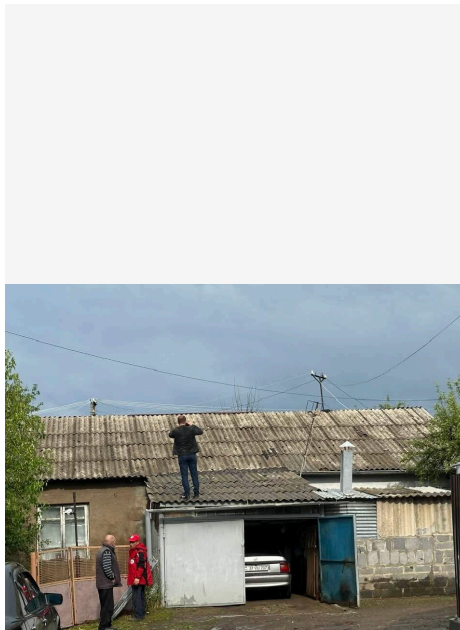
As of 7 June 2026 (12:30 PM), preliminary assessments conducted by local authorities indicated extensive damage across Stepanavan and Lori Berd communities. In the Lori Berd area, approximately 930 hectares of agricultural land were affected, including 260 hectares in Bovadzor, 350 hectares in Lejan, 250 hectares in Gyulagarak, and 70 hectares in Lori Berd community. Crop losses were estimated to range between 30 and 70 per cent. More than 500 households reportedly sustained damage to roofs, windows, household plots, greenhouses, and other property. Many affected households reported damage to roofs and windows that left homes exposed to rainfall and adverse weather conditions, increasing the risk of deterioration of living conditions and damage to essential household items.

As of 10 June 2026, approximately 1,680 households had been identified as affected in Stepanavan community. Damage was reported to roofs, windows, solar energy systems, greenhouses, household plots, and other private property. Around 650 vehicles sustained damage. Public infrastructure was also affected, including parks, recreational areas, public attractions, and street lighting systems. Subsequent rainfall entered a number of damaged homes, affecting bedding, clothing, furniture, and other essential household items. Vulnerable households with limited financial resources, including older persons living alone, persons with disabilities, individuals with chronic health conditions, and low-income families, may be unable to undertake urgent repairs independently, increasing health, safety, and protection risks. In addition, 52 individuals sustained minor injuries, including swelling and soft tissue injuries, although no hospitalizations were reported. Livestock losses included 60 lambs, four ewes, and four foals.

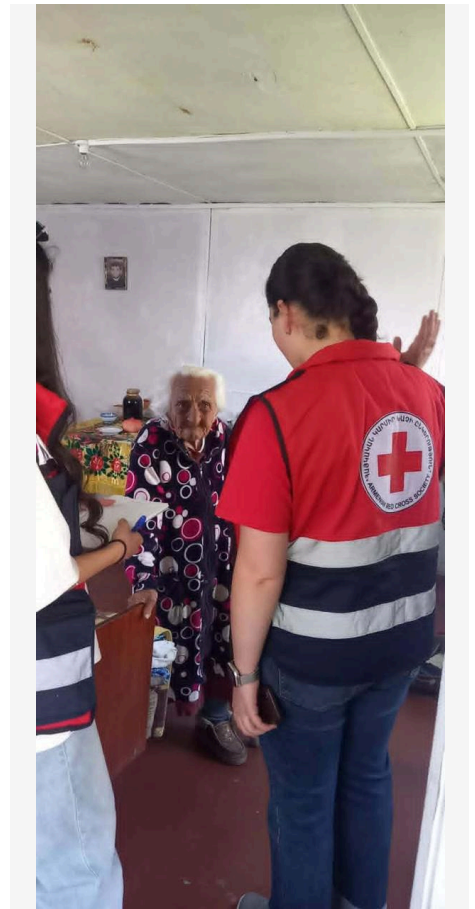
Information collection and verification efforts remain ongoing, and the number of affected households and the extent of damage may increase as additional assessments are completed. ARCS, local authorities, the Rescue Service, and other stakeholders continue to monitor the situation, assess priority needs, and coordinate response actions.



Roof damage exposing interior to weather after hailstorm



Roof damage assessment in Stepanavan



ARCS volunteers conduct household assessment after hailstorm impact

## Scope and Scale

### Scope and Scale of the Event:

The severe hailstorm that struck Stepanavan and surrounding communities in Lori Region on 6 June 2026 has had significant impacts on lives, well-being, housing, and infrastructure. Although the event lasted only 15–20 minutes, the exceptionally large hailstones, measuring approximately 4–6 cm in diameter, caused extensive damage across both urban and rural areas. The concentration and intensity of the hailstorm exceeded the coping capacity of many affected households and resulted in widespread destruction of housing, public infrastructure, agricultural assets, and other property.

### Impact on Housing and Infrastructure:

The hailstorm caused extensive damage to residential buildings, including roofs, windows, doors, solar energy systems, and other structural components. Many households experienced severe damage to roofs and windows, leaving homes exposed to rainfall and adverse weather conditions. Subsequent rainfall entered damaged houses, affecting bedding, clothing, furniture, and other essential household items. For vulnerable households unable to undertake immediate repairs, the damage has compromised minimum safe living conditions and increased health, protection, and safety risks.

Public infrastructure was also affected, including parks, recreational areas, public attractions, and street lighting systems. Damage to community infrastructure has disrupted normal daily activities and created additional challenges for local authorities and affected communities.

### Impact on Livelihoods and Agriculture:

The hailstorm caused significant damage to agricultural land, crops, greenhouses, household gardens, and livestock across affected communities. Approximately 930 hectares of agricultural land were affected across Bovadzor, Lejan, Gyulagarak, and Lori Berd communities, with estimated crop losses ranging from 30 to 70 per cent. These losses have reduced household income and increased the vulnerability of affected families, particularly those dependent on agriculture and seasonal livelihoods. While livelihood losses are significant, they are considered a vulnerability factor that may affect households' ability to cope with the immediate humanitarian consequences of the disaster, including undertaking urgent repairs to damaged homes and replacing essential household items.

### Humanitarian Consequences and Urgency:

While no fatalities have been reported, the hailstorm has created urgent humanitarian needs among affected households. Damage to roofs and windows has left many households exposed to rain, moisture, and deteriorating living conditions. Rainwater entering homes has damaged essential household items, including bedding, clothing, furniture, and household equipment, reducing households' ability to maintain safe and dignified living conditions. Vulnerable households with limited financial means are unable to undertake urgent repairs without external assistance, increasing health, protection, and well-being risks.

Without timely assistance, affected families may be forced to adopt negative coping mechanisms, including delaying urgent repairs to damaged homes, reducing essential household expenditures, borrowing money, or accumulating debt. Older persons, persons with disabilities, individuals with chronic health conditions, and low-income households face particular challenges in addressing urgent shelter-related needs due to limited physical, social, and financial capacities. Immediate humanitarian assistance is therefore required to help the most affected households restore minimum safe living conditions, reduce health, safety, and protection risks, and prevent further deterioration of their situation.

### Impact on People and Well-being:

The hailstorm directly affected hundreds of households across the impacted communities. According to local authorities, 52 individuals sustained minor injuries, including swelling and soft tissue injuries. Although no hospitalizations were reported, the event has generated considerable stress and anxiety among affected families who have experienced sudden damage to their homes and uncertainty regarding their ability to undertake repairs and restore safe living conditions.

The psychological impact of the disaster is particularly significant among households facing uncertainty regarding repairs to damaged homes and replacement of essential household items. The event has increased vulnerability among individuals with limited coping capacities and those who may have difficulty accessing support and recovery opportunities.

### Targeting and Identification of the Most Vulnerable Households:

Preliminary assessments conducted jointly by local authorities, the Rescue Service, and ARCS indicate widespread damage across affected communities. However, the severity of impact varies significantly between households and locations. To ensure that assistance reaches those most in need and to avoid duplication with government and other actors' support, ARCS will conduct detailed household-level assessments in close coordination with municipal authorities, community representatives, and relevant stakeholders.

The assessments will identify households that have experienced the highest levels of damage and those with the lowest coping capacities. Assessment findings will inform prioritization and targeting criteria, ensuring that available resources are directed towards households facing the greatest humanitarian needs and protection risks. Continuous coordination and information-sharing with local authorities and response partners will support complementarity of assistance and help prevent gaps or duplication in the response.



#### Most Affected and Vulnerable Groups:

The populations most affected by the hailstorm are residents of Stepanavan and surrounding rural communities in Lori Berd cluster, including Bovadzor, Lejan, Gyulagarak, and Lori Berd villages. These communities are exposed to weather-related hazards and include households with varying levels of vulnerability and coping capacity.

#### Particular attention will be given to:

Older persons living alone;

Persons with disabilities and individuals with chronic health conditions;

Low-income households with limited financial resources;

Female-headed households with limited income sources;

Households whose homes have sustained significant damage to roofs and windows and who lack the resources to undertake urgent repairs independently;

Households without insurance coverage or access to compensation mechanisms;

Other socially vulnerable households identified through assessments.

Many vulnerable households have limited savings, reduced access to support networks, and insufficient resources to repair damaged homes or replace essential household items. These factors increase the risk of prolonged exposure to unsafe living conditions and negative coping mechanisms.

#### Geographic Exposure and Historical Context:

Lori Region is regularly exposed to seasonal convective weather events, including storms and hail. According to Armhydromet data, hail events are recurrent in Stepanavan, typically occurring between 0 and 5 days annually, with average hailstone diameters ranging from 10 to 20 millimetres. However, recent events indicate increasing severity of extreme weather phenomena. The June 2026 hailstorm substantially exceeded historical averages and falls within the category of dangerous meteorological phenomena.

Similar hailstorm events affected Lori Region, including communities near Stepanavan, in 2023 and 2024, causing agricultural losses and localized damage to housing and infrastructure. Following previous events, anti-hail protection systems were strengthened in some agricultural areas of Armenia; however, urban centres such as Stepanavan remained outside the coverage of many protective measures, increasing their exposure to hail-related hazards. The scale of destruction observed during the June 2026 event highlights the growing vulnerability of communities to climate-related hazards and the limited resilience of housing systems to withstand increasingly severe weather events.

#### Overall Impact:

The hailstorm has generated significant humanitarian needs, particularly among households whose homes sustained damage to roofs and windows and whose essential household items were affected by rainfall. Many affected families are facing deteriorating living conditions and increased exposure to health, safety, and protection risks. Vulnerable households, including older persons living alone, persons with disabilities, individuals with chronic health conditions, and low-income families, often lack the resources to undertake urgent repairs independently. Immediate assistance is therefore required to help affected households restore minimum safe living conditions, prevent the adoption of negative coping mechanisms, and reduce the risk of further deterioration of their well-being.

Source Name	Source Link
1. Shamshyan.com	<a href="https://shamshyan.com/hy/article/2026/06/06/1306900">https://shamshyan.com/hy/article/2026/06/06/1306900</a>
2. Hraparak	<a href="https://hraparak.am/am/post/4b9714861073c28bad15a875aeb6a133">https://hraparak.am/am/post/4b9714861073c28bad15a875aeb6a133</a>
3. Aysor	<a href="https://www.aysor.am/am/news/2026/06/06/%D5%AF%D5%A1%D6%80%D5%AF%D5%B8%D6%82%D5%BF/2424140">https://www.aysor.am/am/news/2026/06/06/%D5%AF%D5%A1%D6%80%D5%AF%D5%B8%D6%82%D5%BF/2424140</a>

## Previous Operations

Has a similar event affected the same area(s) in the last 3 years?	Yes
--	-----



Did it affect the same population group?	No
Did the National Society respond?	-
Did the National Society request funding form DREF for that event(s)	-
If yes, please specify which operation	-

**If you have answered yes to all questions above, justify why the use of DREF for a recurrent event, or how this event should not be considered recurrent:**

-

#### Lessons learned:

The Armenian Red Cross Society (ARCS) has extensive experience responding to weather-related emergencies, including severe hailstorms, floods, storms, and other climate-related hazards across Armenia. Similar hailstorm events affected Lori Region, including communities near Stepanavan, in 2023, causing significant damage to housing, agricultural production, and livelihoods. As in the current event, rural households dependent on agriculture were disproportionately affected. However, the June 2026 hailstorm is significantly more severe and larger in scale, affecting a substantially higher number of households and causing more widespread damage to housing, public infrastructure, and essential household assets. The concentration and intensity of the damage have exceeded the impact observed during previous hailstorm events, placing additional pressure on household coping capacities and local response mechanisms.

Although hailstorms occur periodically in Armenia, the June 2026 event exceeded normal seasonal patterns due to the exceptional size of hailstones (4–6 cm), the concentration of damage within an urban centre not protected by anti-hail systems, and the unusually high number of affected households. Unlike previous events that caused more localized impacts, this hailstorm resulted in widespread damage to roofs, windows, and essential household assets across approximately 1,680 households. The scale of humanitarian needs exceeded local response capacities and required additional support through the DREF.

Previous operations have generated several important lessons that are directly informing the design and implementation of the current response. Experience has demonstrated that rapid needs assessments are critical to identifying priority humanitarian needs, understanding the scale of impact, and enabling timely and targeted assistance. Strong coordination with local authorities and emergency services has proven essential for obtaining reliable information, avoiding duplication, and ensuring an effective and complementary response. The engagement of local branches and volunteers familiar with affected communities has consistently improved community acceptance, strengthened trust, and enhanced the quality and accuracy of data collection.

Past responses have also highlighted the effectiveness of multipurpose cash assistance in enabling affected households to address their most urgent humanitarian needs in a flexible and dignified manner. In addition, community engagement and accountability mechanisms, including face-to-face consultations, community meetings, and feedback channels, have been essential for managing expectations, ensuring transparency, and incorporating community feedback into operational decision-making.

These lessons are being applied in the current operation through the immediate mobilization of ARCS staff and volunteers to conduct rapid assessments and support community outreach activities. Close coordination has been established with the Stepanavan Municipality, local authorities, the Rescue Service, and other stakeholders to ensure a common understanding of needs and response priorities. Structured assessment tools and community engagement approaches are being utilized to support evidence-based targeting and maintain accountability to affected populations. The operation will utilize cash-based assistance to help the most affected and vulnerable households address urgent humanitarian needs arising from damage to roofs, windows, and essential household items, enabling them to restore minimum safe living conditions in a dignified manner.

Furthermore, lessons from previous responses have reinforced the importance of early action and timely resource mobilization. Given the scale of housing damage, the impact on essential household items, and the limited capacity of many vulnerable households to undertake urgent repairs independently, the operation seeks to provide rapid assistance that reduces immediate health, safety, and protection risks while preventing further deterioration of living conditions.

Did you complete the Child Safeguarding Risk Analysis in previous operations, what was risk level?	Yes
What was the risk level for Child Safeguarding Risk Analysis?:	The Child Safeguarding Risk Analysis was conducted as part of the Armenia: Population Movement (MDRAM014) imminent DREF Operation, with a result of "Low Risk".



# Current National Society Actions

## Start date of National Society actions

06-06-2026

### Coordination

On 6 June 2026, immediately following the severe hailstorm that affected Stepanavan and surrounding communities in Lori Region, the Armenian Red Cross Society (ARCS) activated its local response mechanisms and initiated coordination with local authorities and relevant response actors. As an auxiliary to the public authorities in the humanitarian field and a member of the Community Emergency Response Group, ARCS participated in coordination mechanisms activated by the Stepanavan Municipality and worked closely with the Rescue Service, community authorities, and other relevant stakeholders to support initial response efforts.

From the first hours of the emergency, ARCS staff and volunteers joined local authorities in conducting rapid assessments, collecting information on the scale of the impact, and identifying priority humanitarian needs. Coordination efforts focused on information sharing, verification of damage data, identification of affected households, and establishing a common understanding of response priorities. Regular communication between ARCS, municipal authorities, and emergency services has supported timely decision-making and facilitated the mobilization of response capacities.

Given the widespread impact of the hailstorm and the varying levels of damage across affected communities, ARCS will continue to work closely with municipal authorities, community representatives, and relevant stakeholders to conduct detailed household-level assessments. These assessments will support the identification of the most affected and vulnerable households, ensure evidence-based targeting, and help avoid duplication of assistance provided by government institutions, insurance mechanisms, or other actors.

Coordination mechanisms will support the prioritization of assistance for households with the highest humanitarian needs, particularly those whose homes sustained significant damage to roofs and windows, whose essential household items were damaged by rainfall, and who lack the financial resources, physical capacity, or social support required to undertake urgent repairs independently. Livelihood and agricultural losses will be considered solely as secondary vulnerability factors during assessments, alongside household coping capacities and existing social vulnerabilities.

While local and national authorities are leading damage assessments, coordination, and recovery planning, the scale of the hailstorm has exceeded the resources currently available to address the urgent needs of all affected households. Although authorities continue to assess damages and identify potential support measures, immediate assistance for vulnerable households requiring urgent roof and window repairs and replacement of essential household items remains limited. The DREF operation will therefore complement government efforts by providing targeted humanitarian assistance to the most affected households that lack sufficient resources, insurance coverage, or other support mechanisms to restore minimum safe living conditions independently and reduce immediate health, safety, and protection risks.

Particular attention will be given to older persons living alone, persons with disabilities, individuals with chronic health conditions, female-headed households, low-income families, households without insurance coverage or access to compensation mechanisms, and other socially vulnerable groups identified through assessments.

At the national level, ARCS is maintaining regular communication with the IFRC Country



Delegation and relevant government counterparts regarding the evolving situation and response plans. Coordination efforts will focus on ensuring complementarity of assistance, identifying remaining humanitarian gaps, and directing available resources towards households facing the greatest humanitarian needs.

ARCS will continue to coordinate closely with the Stepanavan Municipality, the Unified Social Service, local authorities, and other relevant stakeholders throughout the operation to ensure that assistance remains complementary and does not duplicate support provided by government institutions, insurance mechanisms, NGOs, or other actors. During household-level assessments and beneficiary verification, information will be collected regarding any assistance already received or expected from other sources. Households receiving support for the same urgent shelter-related needs from government programmes, insurance schemes, or other organizations will not be prioritized for DREF-funded assistance. This verification process will be conducted in coordination with local authorities and relevant stakeholders to ensure transparent and accountable targeting.

Coordination within the Red Cross Red Crescent Movement will support information sharing, operational planning, technical guidance, and resource mobilization as required. ARCS will continue to participate in local and national coordination mechanisms throughout the operation to ensure a timely, complementary, and accountable response that addresses priority humanitarian needs while maximizing available resources and avoiding overlap with other interventions.

## Assessment

Following the severe hailstorm on 6 June 2026, the Armenian Red Cross Society (ARCS), in close coordination with local authorities, the Rescue Service, and community representatives, initiated rapid assessments in the affected communities of Stepanavan and Lori Berd. The objective of the assessments was to determine the scale and severity of the impact, identify priority humanitarian needs, and support evidence-based planning and targeting of the response.

Initial assessments were conducted through household visits, direct observations, and consultations with affected populations and local authorities. A total of 111 affected individuals were interviewed during the rapid assessment phase. The findings confirmed extensive damage to housing, essential household assets, agricultural assets, crops, orchards, greenhouses, and livestock, with significant impacts on living conditions and household coping capacities.

Housing damage emerged as one of the most critical humanitarian concerns. Of the assessed households, 105 reported damage to roofing structures, while many also experienced broken windows and damage to other parts of their homes. In several cases, subsequent rainfall entered damaged houses, affecting bedding, blankets, clothing, furniture, and other essential household items. As a result, many families are facing deteriorating living conditions and increased exposure to rain, moisture, and adverse weather. The situation is particularly concerning for vulnerable households, including older persons living alone, persons with disabilities, individuals with chronic health conditions, and low-income families, who often lack the financial resources, physical capacity, or social support required to undertake urgent repairs independently. Without timely assistance, these households face increased health, protection, and safety risks, as well as further deterioration of their living conditions.

The assessment also confirmed significant livelihood losses among affected households, particularly those dependent on agriculture and seasonal income sources. Damage to crops, orchards, greenhouses, and livestock has reduced income and increased household vulnerability. While these losses are substantial, they are considered a factor that may further limit households' ability to cope with the immediate humanitarian consequences of the disaster, including repairing damaged homes and replacing essential household items.

The assessment identified groups requiring particular attention due to their increased vulnerability and reduced coping capacities. These include older persons living alone, persons with disabilities, individuals with chronic health conditions, low-income households, female-headed households, families with young children, and households without insurance coverage or access to compensation mechanisms. Many of these households have limited savings and reduced capacity to recover from the impacts of



the disaster without external support.

The findings indicate that the most urgent humanitarian needs relate to restoring minimum safe living conditions through urgent shelter-related support, replacement of essential household items damaged by rainfall, and assistance to vulnerable households unable to undertake immediate repairs independently. The combined impact of housing damage and limited coping capacities has increased the risk of further deterioration of living conditions among the most vulnerable families.

As the situation continues to evolve, ARCS will conduct more detailed household-level assessments in coordination with municipal authorities and relevant stakeholders to further verify damages, identify households with the greatest humanitarian needs, and avoid duplication of assistance. Assessment findings will continue to inform targeting and prioritization throughout the operation, ensuring that available resources are directed to the most affected and vulnerable households while complementing support provided by government institutions and other actors.

## National Society EOC

Following the severe hailstorm on 6 June 2026, the Armenian Red Cross Society (ARCS) activated its Emergency Operations Centre (EOC) structures at both the local and national levels to coordinate response activities, support operational decision-making, and facilitate information management and resource mobilization.

The Stepanavan Territorial Branch was immediately activated and played a central role in the initial response. ARCS staff and volunteers were rapidly mobilized to support emergency coordination, conduct rapid assessments, and engage directly with affected communities. The branch deployed its drone assessment capacity, operated by trained ARCS specialists, to support aerial assessments and situational analysis. The use of drone technology enabled the rapid identification of affected areas, assessment of damage to housing and infrastructure, and collection of accurate and timely information to support operational planning and prioritization.

In close coordination with the Ministry of Interior's Rescue Service, municipal authorities, and community representatives, ARCS assessment teams conducted initial damage and needs assessments. These assessments confirmed significant damage to residential housing, particularly rooftops and windows, as well as damage to essential household items resulting from rainfall entering affected homes. The findings highlighted urgent humanitarian needs related to restoring minimum safe living conditions, supporting vulnerable households unable to undertake immediate repairs independently, and reducing health, safety, and protection risks.

At the national level, ARCS activated its Disaster Management and Population Movement departments in Yerevan to support the response. These teams facilitated the collection, consolidation, verification, and analysis of assessment data while ensuring effective coordination and information flow between field teams, branch structures, national headquarters, and external stakeholders. The EOC also supported operational planning, coordination with authorities and Movement partners, and the preparation of response options based on emerging humanitarian needs.

The activation of the ARCS EOC structure enabled a coordinated, timely, and evidence-based response, ensuring that operational decisions were informed by real-time information from affected communities. Through its branch network, trained volunteers, assessment teams, and established coordination mechanisms, ARCS strengthened collaboration with local authorities and response partners while supporting the identification and prioritization of the most affected and vulnerable households.

As additional information becomes available, ARCS will continue to utilize its EOC capacities to monitor the evolving situation, coordinate detailed assessments, support targeting and response planning, and ensure that humanitarian assistance is delivered in a timely, efficient, accountable, and complementary manner, while avoiding duplication of assistance provided by government institutions and other actors.



# IFRC Network Actions Related To The Current Event

<p><b>Secretariat</b></p>	<p>The International Federation of Red Cross and Red Crescent Societies (IFRC) maintains a Country Office presence in Armenia and has been closely supporting the Armenian Red Cross Society (ARCS) since the onset of the severe hailstorm on 6 June 2026.</p> <p>From the early stages of the emergency, the IFRC Country Office has maintained regular communication and coordination with ARCS to monitor the evolving situation, assess the humanitarian impact of the event, and support operational planning and response decision-making. The IFRC Country Office has worked closely with ARCS during the initial assessment phase and is providing technical support for the preparation and implementation of the Disaster Response Emergency Fund (DREF) operation.</p> <p>The IFRC Country Office and the IFRC Regional Office for Europe are supporting ARCS through Secretariat services and technical assistance across multiple operational areas. This includes guidance on disaster management, operational strategy development, targeting and assessment methodologies, cash and voucher assistance considerations, community engagement and accountability approaches, and coordination with relevant stakeholders.</p> <p>Throughout the operation, IFRC will provide support in programme management, planning, monitoring, evaluation and reporting (PMER), finance, administration, procurement and logistics, communications, and risk management. Technical support will also be available to ensure compliance with DREF requirements, quality programming standards, and accountability commitments.</p> <p>The IFRC Country Office will support ARCS in operational monitoring, financial management, reporting, and coordination processes, while facilitating information-sharing with the IFRC Regional Office for Europe and other Movement partners as required. Additional technical surge support from the Regional Office may be mobilized if operational needs increase or specialized expertise is required during implementation.</p> <p>The IFRC Country Office will continue to work closely with ARCS throughout the operation, ensuring timely technical guidance, effective coordination, and adequate Secretariat support to enable a principled, accountable, and needs-based response for the affected population.</p>
<p><b>Participating National Societies</b></p>	<p>Several Participating National Societies maintain a presence in Armenia and support the development of the Armenian Red Cross Society (ARCS) through ongoing bilateral partnerships and programmes. These include the Austrian Red Cross, the Swiss Red Cross, and the Italian Red Cross, the latter operating through its IFRC office in Tbilisi, Georgia.</p> <p>At the time of reporting, no Participating National Societies are directly involved in the response operation related to the severe hailstorm in Stepanavan and Lori Region, and no bilateral emergency response activities have been initiated in support of this operation.</p> <p>ARCS remains in regular communication with its Partner National Societies and will continue to provide updates on the evolving situation and response activities. Should additional support requirements emerge during the implementation of the operation, ARCS, in coordination with IFRC, will engage with Movement partners as appropriate.</p> <p>Movement coordination for this operation will be carried out in accordance with the Movement Coordination Agreement (MCA), ensuring clear roles and responsibilities</p>



among partners. Regular coordination and information sharing will be maintained throughout the operation to ensure complementarity of interventions, efficient use of resources, and adherence to the Fundamental Principles of the Red Cross Red Crescent Movement.

Should the scale of humanitarian needs increase or additional Movement support be required, existing Movement coordination and contingency planning mechanisms will be utilized to facilitate timely technical, operational, or resource support. These arrangements will help ensure a coherent, complementary, and efficient response while avoiding duplication of efforts and maximizing assistance to affected communities.

The presence of Partner National Societies in Armenia contributes to an established coordination environment within the Movement and provides opportunities for information sharing, technical exchange, capacity strengthening, and potential support should operational needs exceed available capacities.

## ICRC Actions Related To The Current Event

The International Committee of the Red Cross (ICRC) maintains a presence in Armenia and is informed through regular Movement coordination and information-sharing mechanisms.

At the time of reporting, the ICRC is not directly involved in the response operation related to the severe hailstorm in Stepanavan and Lori Region, and no ICRC-supported activities are being implemented under this operation.

ARCS maintains regular communication with the ICRC through established Movement coordination channels and will continue to share relevant operational updates as appropriate. Should the situation evolve and additional coordination be required, ARCS will ensure information sharing and complementarity of actions in line with established Movement coordination arrangements.

No direct operational, technical, financial, or logistical support from the ICRC is currently foreseen for this operation.

## Other Actors Actions Related To The Current Event

<b>Government has requested international assistance</b>	No
<b>National authorities</b>	<p>Following the severe hailstorm on 6 June 2026, national and local authorities promptly activated response and coordination mechanisms to assess the impact of the event and support affected communities. The Ministry of Interior's Rescue Service deployed teams to the affected areas to conduct initial damage assessments, support emergency response activities, and coordinate with local authorities and community structures.</p> <p>At the regional level, the Lori Regional Administration, together with the Stepanavan Municipality and affected community authorities, initiated information collection, damage verification, and needs assessment processes covering residential housing, public infrastructure, agriculture, livestock, and livelihoods. Local authorities mobilized relevant technical services to assess the extent of damages and support the identification of priority response and recovery needs.</p> <p>A coordination committee was established under the leadership of the Deputy Regional Governor to oversee response efforts, facilitate information sharing, and ensure effective collaboration among government institutions, emergency services, municipalities, and humanitarian actors. Regular coordination meetings have been</p>



held to review assessment findings, monitor the evolving situation, and identify priority interventions for the most affected communities.

Authorities continue to lead detailed assessments and response planning efforts, with a particular focus on households affected by damage to housing and livelihoods. The government is also compiling verified damage data to inform recovery planning and determine potential support measures for affected populations.

Throughout the response, authorities have worked closely with the ARCS through established coordination mechanisms at regional and community levels. This collaboration has supported joint assessments, information sharing, and the identification of priority humanitarian needs while helping to ensure complementarity of assistance and avoid duplication of efforts.

The continued engagement of national, regional, and local authorities remains critical to ensuring a coordinated, timely, and effective response to the humanitarian consequences of the hailstorm and supporting the recovery of affected communities.

#### UN or other actors

At the time of reporting, no significant operational involvement from United Nations agencies or other international humanitarian organizations has been reported in response to the severe hailstorm affecting Stepanavan and surrounding communities in Lori Region. Response efforts are currently being led by national and local authorities, with support from the ARCS and the IFRC.

Coordination and information sharing with relevant stakeholders remain ongoing to maintain a common understanding of the evolving situation, humanitarian needs, and response priorities. Assessment findings and operational updates continue to be shared through existing coordination mechanisms to support complementarity and avoid duplication of efforts.

As additional assessment data becomes available and the full extent of humanitarian needs is further clarified, engagement with relevant national and international partners may be considered where appropriate. Any such engagement would aim to complement existing response efforts and address identified gaps, particularly in areas requiring specialized technical expertise or additional resources.

ARCS and IFRC will continue to monitor the operational landscape and maintain communication with relevant stakeholders throughout the operation to ensure effective coordination and a coherent humanitarian response.



## Are there major coordination mechanism in place?

At the local and regional levels, coordination mechanisms were activated immediately following the severe hailstorm under the leadership of the Lori Regional Administration, with overall oversight provided by the Deputy Regional Governor. A regional coordination committee was established to oversee response activities, facilitate information sharing, consolidate assessment findings, and support decision-making related to emergency response and recovery planning.

The Ministry of Interior's Rescue Service serves as the lead operational emergency response authority and plays a central role in coordinating damage assessments, emergency response activities, and communication among local authorities, technical services, and response actors. At the community level, the Stepanavan Municipality leads local coordination efforts, working closely with affected communities, utility services, emergency responders, and humanitarian partners to support damage verification, information collection, and prioritization of response needs.

At the national level, coordination is led by relevant government authorities, particularly the Ministry of Interior through the Rescue Service, in coordination with regional and local authorities. National-level structures support the consolidation of assessment data, monitoring of the evolving situation, and identification of response and recovery priorities. Coordination between local, regional, and national authorities remains ongoing to ensure a coherent and complementary response.

The Armenian Red Cross Society is actively engaged in these coordination mechanisms as an auxiliary to the public authorities in the humanitarian field and as a member of the Community Emergency Response Group. ARCS participates in local and regional coordination meetings, contributes to joint assessments, shares assessment findings and operational information, and supports the identification and prioritization of humanitarian needs. Through the activation of its Emergency Operations Centres (EOCs) at branch and national levels, ARCS also facilitates internal coordination and supports information management and operational planning.

While ARCS does not currently lead or co-lead a formal sectoral coordination mechanism, it plays a significant operational coordination role in rapid assessments, information management, community engagement, and humanitarian response planning. ARCS is recognized by local authorities as a key response partner and contributes to ensuring that the needs of the most vulnerable populations are reflected in response priorities.

At present, no significant coordination overlaps have been identified. Existing coordination mechanisms are functioning effectively and provide a clear framework for information sharing and response planning. However, several coordination considerations remain:

- Detailed sector-specific coordination, particularly in shelter and livelihoods, continues to evolve as assessment data is further consolidated and analyzed;
- The scale of agricultural damage and livelihood losses may require strengthened coordination among authorities and relevant actors involved in agricultural recovery and livelihood support;
- As the operation progresses, additional coordination with national and international partners may be required to address potential recovery needs and ensure adequate support for the most affected households;
- Continued coordination will be essential to avoid duplication of assistance and ensure that support is targeted to households with the greatest humanitarian needs and the lowest coping capacities.

Overall, coordination mechanisms are functioning effectively and are expected to strengthen further as detailed assessments are completed and response priorities become more clearly defined. The strong collaboration between authorities, ARCS, and other stakeholders provides a solid foundation for a coordinated, targeted, and accountable humanitarian response.

## Needs (Gaps) Identified



### Multi purpose cash grants

Based on findings from the initial rapid needs assessments conducted jointly by the Armenian Red Cross Society (ARCS), local authorities, and affected communities, multi-purpose cash assistance (MPCA) has been identified as the most appropriate and efficient modality to address the immediate humanitarian needs arising from the hailstorm. The event caused extensive damage to roofs, windows, and other housing components, while subsequent rainfall affected bedding, clothing, furniture, and other essential household items. Many affected households are facing deteriorating living conditions and require urgent support to restore minimum safe and dignified living conditions.



Assessment findings indicate that a large proportion of affected households require immediate assistance to undertake minor repairs to damaged homes, replace essential household items, and meet urgent household expenditures. Vulnerable households, including older persons living alone, persons with disabilities, individuals with chronic health conditions, female-headed households, and low-income families, often lack the financial resources to undertake urgent repairs independently.

The proposed multi-purpose cash assistance will enable affected households to address urgent shelter-related and household needs in a flexible and dignified manner, based on their individual circumstances and priorities. Based on preliminary market observations, local markets remain functional and accessible, enabling households to purchase the goods and services required to address their immediate needs.

The transfer value was calculated based on preliminary market assessments and estimated costs associated with immediate humanitarian needs resulting from the hailstorm. The calculation considered the average cost of minor roof and window repairs, replacement of essential household items damaged by rainfall, and coverage of immediate household expenditures required to maintain minimum safe living conditions. The transfer value is not intended to compensate for agricultural, livestock, vehicle, or livelihood losses, but rather to support households in addressing urgent humanitarian needs arising from damage to housing and essential household assets.

Cash assistance is expected to contribute to:

- Minor repairs of damaged roofs, windows, and other essential housing components;
- Purchase of construction materials required for urgent shelter-related repairs;
- Replacement of essential household items damaged by rainfall and housing damage;
- Coverage of immediate essential household expenditures necessary to maintain minimum safe living conditions.

The operation aims to support approximately 1,550 affected individuals, prioritizing households whose homes sustained significant damage and who demonstrate limited coping capacities and insufficient resources to undertake urgent repairs independently. Livelihood and agricultural losses will be considered as vulnerability factors during targeting, alongside housing damage, existing vulnerabilities, household composition, coping capacity, and access to insurance or other compensation mechanisms.

Targeting criteria and beneficiary selection approaches will be validated through detailed household-level assessments and consultations with local authorities, community representatives, and affected communities to ensure transparency, accountability, and community acceptance. Particular attention will be given to older persons living alone, persons with disabilities, individuals with chronic health conditions, female-headed households, low-income families, and other households facing heightened humanitarian risks.

Final transfer values and targeting criteria will be confirmed based on detailed assessments, market considerations, and ongoing coordination with local authorities and other stakeholders. ARCS will ensure that assistance is directed to households with the greatest humanitarian needs while avoiding duplication with support provided through government institutions, insurance mechanisms, or other actors.

Information regarding eligibility criteria, beneficiary selection, assistance modalities, and distribution processes will be communicated through community engagement activities and appropriate communication channels. A complaints and response mechanism will be established and promoted to enable affected individuals to ask questions, raise concerns, and receive timely responses throughout the operation.



## Community Engagement And Accountability

Since the onset of the hailstorm, ARCS has been actively engaging with affected communities through direct communication, consultations with people seeking support, and coordination with local authorities. As part of the initial response, ARCS conducted a rapid assessment to obtain a preliminary understanding of the impact of the disaster and inform immediate response planning. However, the rapid assessment did not cover all affected households, and the available information does not yet provide a complete picture of the extent of damages, vulnerabilities, and humanitarian needs across the affected communities.

In addition, updated information from municipalities and other relevant authorities is still being consolidated, and further verification is required to ensure that the most affected and vulnerable households are identified. There is therefore a need to conduct detailed household-level assessments in close coordination with municipalities, the Unified Social Service (USS), and community representatives. The assessment process will support the identification of the most vulnerable households, provide a better understanding of priority needs and coping capacities, and ensure that assistance is targeted to families facing the highest levels of vulnerability and the greatest impact from the hailstorm.

Further engagement with affected communities will also be required throughout the operation to ensure that people are informed about the available assistance, eligibility criteria, and implementation modalities, while providing opportunities for them to raise concerns,



share feedback, and communicate emerging needs. Strengthening two-way communication with communities will support transparent and accountable assistance delivery and help ensure that the response remains aligned with the priorities of affected populations.

## Any identified gaps/limitations in the assessment

Due to the scale and urgency of the disaster, the initial assessment was conducted as a rapid needs assessment during the first days following the hailstorm. Information was collected through household visits, direct observations, consultations with local authorities, and calls and messages received from affected populations. While this approach provided a timely overview of the situation and supported immediate response planning, it covered only a limited number of households and does not yet provide a complete picture of the full extent of damages and humanitarian needs.

A key limitation is the need for more comprehensive household-level assessments to verify damages, identify priority needs, and establish vulnerability-based targeting criteria. As information continues to be consolidated, the number of affected households may increase beyond current estimates.

Several sectoral gaps have already been identified. Significant damage to roofs, windows, and housing structures has created immediate shelter-related needs. While many households have implemented temporary coping measures, including the use of plastic sheeting and temporary roof coverings, these solutions remain insufficient and may not provide adequate protection in the event of additional rainfall or adverse weather conditions. Further assessment is required to determine the full scale of shelter assistance needs.

Substantial damage to crops, orchards, greenhouses, household gardens, and livestock has also highlighted significant gaps in livelihood support. Agriculture represents a primary source of income and food security for many affected households, and the long-term consequences of livelihood losses may not yet be fully reflected in the initial assessment findings. Additional analysis will be required to better understand the recovery needs of agriculture-dependent households.

Resource limitations also present a challenge. As of 10 June 2026, approximately 1,680 affected households had been identified across the impacted communities. The scale of needs exceeds the currently available response capacities and resources, creating potential gaps in coverage and increasing the likelihood that some affected households may not receive immediate support without additional assistance and resource mobilization.

From an operational perspective, ongoing verification of damage data and the dispersed nature of affected communities require significant assessment and coordination efforts. Continued collaboration between local authorities, the Armenian Red Cross Society, and other stakeholders is necessary to ensure consistent information management, prioritization, and targeting.

Although coordination mechanisms are functioning effectively, detailed sector-specific coordination, particularly in shelter recovery and livelihood support, is still evolving as assessment findings are consolidated. As the operation progresses, stronger coordination among authorities and relevant actors may be required to address emerging recovery needs and avoid duplication of assistance.

Finally, the rapid nature of the initial assessment means that some vulnerable groups may not yet be fully identified or represented in the available data. Older persons living alone, persons with disabilities, individuals with chronic health conditions, female-headed households, and households with limited coping capacities may face barriers in accessing information, reporting damages, or seeking assistance. ARCS will therefore conduct more detailed household-level assessments in coordination with local authorities and community representatives to ensure that the needs of the most vulnerable households are adequately captured and addressed.

The ongoing assessment process will help refine targeting, improve understanding of sector-specific needs, and ensure that available resources are directed towards households facing the highest humanitarian risks and the lowest coping capacities.

## Operational Strategy

### Overall objective of the operation

The IFRC-DREF operation aims to address the immediate humanitarian needs of 1,550 individuals affected by the severe hailstorm in Stepanavan and surrounding communities by providing multi-purpose cash assistance and community engagement activities, enabling the most vulnerable households to restore minimum safe living conditions, reduce exposure to weather-related risks, and protect their health, safety, and dignity over a four-month operational period.



## Operation strategy rationale

The operation strategy is based on findings from rapid assessments conducted jointly by the Armenian Red Cross Society (ARCS), local authorities, and affected communities following the severe hailstorm that struck Stepanavan and surrounding communities in Lori Region on 6 June 2026. Assessment findings confirmed significant damage to housing, roofs, windows, and essential household items, resulting in immediate humanitarian needs and reduced coping capacities among affected households.

At the time of planning, local and national authorities were leading damage assessments, coordination, and identification of potential support measures; however, no dedicated mechanism had been identified to cover the immediate humanitarian needs of all affected households requiring urgent roof and window repairs and replacement of essential household items. The scale of the event exceeded the resources currently available to support all affected households, particularly the most vulnerable. The DREF operation will therefore complement existing efforts by filling an identified humanitarian gap and providing targeted humanitarian assistance to households that lack sufficient resources, insurance coverage, or other support mechanisms to restore minimum safe living conditions independently.

ARCS has not secured sufficient alternative funding to address these urgent humanitarian needs at the required scale and is therefore requesting DREF support to ensure timely assistance to the most affected and vulnerable households.

The operation will focus on supporting the most affected and vulnerable households through multi-purpose cash assistance (MPCA), community engagement and accountability activities, and strengthened local response capacities. The strategy is designed to address urgent humanitarian needs arising from damage to housing and essential household assets, while reducing health, safety, and protection risks among vulnerable households.

The most urgent needs identified through assessments include:

- Support for households affected by damage to roofs, windows, and other housing components, compromising minimum safe living conditions;
- Replacement of essential household items damaged by rainfall entering homes through damaged roofs and windows;
- Immediate support to vulnerable households that lack the financial resources, physical capacity, or social support to undertake urgent repairs independently;
- Assistance to older persons living alone, persons with disabilities, individuals with chronic health conditions, and low-income households with reduced coping capacities;
- Access to information, feedback mechanisms, and community engagement throughout the response.

These needs were prioritized due to their immediate impact on health, safety, protection, and dignity, particularly among the most vulnerable households.

These priorities were selected because damage to housing and essential household assets has directly affected the ability of households to maintain safe living conditions and meet their immediate needs. Vulnerable households with limited financial resources, reduced mobility, or limited social support face particular challenges in undertaking urgent repairs and replacing damaged household items without external assistance.

Multi-purpose cash assistance has been selected as the primary response modality because assessment findings indicate that affected households face diverse and evolving needs that cannot be adequately addressed through a single standardized in-kind assistance package. Cash assistance will provide households with the flexibility and dignity to prioritize their most urgent needs, including minor shelter repairs, replacement of essential household items, and coverage of immediate household expenditures required to maintain minimum safe living conditions. Local market assessments and observations indicate that markets remain functional and accessible, supporting the feasibility and effectiveness of cash-based interventions.

The operation will target approximately 1,550 affected individuals, prioritizing households that have experienced the highest levels of housing damage and demonstrate the lowest coping capacities. Detailed household-level assessments will be conducted in coordination with local authorities to verify needs, identify vulnerable households, validate targeting criteria, and ensure that assistance is targeted in a transparent and accountable manner. Targeting criteria and beneficiary selection approaches will be validated through consultations with community representatives and affected communities. Particular attention will be given to older persons living alone, persons with disabilities, individuals with chronic health conditions, female-headed households, low-income families, households without insurance coverage or access to compensation mechanisms, and other households facing heightened humanitarian risks.

Community Engagement and Accountability (CEA) will be integrated throughout the operation to ensure that affected communities are informed, consulted, and able to ask questions or raise concerns regarding the assistance process. Community engagement activities will support transparent communication on eligibility criteria, targeting processes, assistance modalities, and available support. Accessible complaints and response mechanisms will support accountability, community acceptance, and continuous adaptation of the response based on community priorities and concerns. Risk reduction and preparedness messages, including information on severe weather risks



and household preparedness measures, will also be integrated into community engagement activities.

Protection, Gender and Inclusion (PGI) considerations will be mainstreamed throughout all activities to ensure equitable access to assistance and reduce the risk of exclusion of vulnerable groups.

The operation will also strengthen the response capacity of the ARCS Stepanavan Branch through the mobilization of trained staff and volunteers, enhanced assessment and information management capacities, and continued coordination with local authorities and response partners. Lessons learned from previous hailstorm responses in Lori Region have demonstrated the importance of rapid assessments, community engagement, strong coordination, and flexible cash-based assistance in addressing urgent humanitarian needs.

Several factors have influenced the design of the operation, including the scale of housing damage, the impact on essential household items, existing socioeconomic vulnerabilities, the functionality of local markets, and the need to prioritize assistance due to limited available resources compared with the overall scale of needs. These factors were carefully considered to ensure that the response remains targeted, efficient, complementary, and responsive to the most pressing humanitarian needs.

Through multi-purpose cash assistance, community engagement, and protection-sensitive programming, the operation aims to restore minimum safe living conditions, address urgent humanitarian needs, and reduce immediate health, safety, and protection risks among the most affected and vulnerable households.

## Targeting Strategy

### Who will be targeted through this operation?

The operation will target approximately 1,550 affected individuals (around 300–350 households) in Stepanavan and surrounding communities in Lori Region that were impacted by the severe hailstorm of 6 June 2026.

While preliminary assessments indicate that approximately 1,680 households have been affected by the hailstorm, available resources are not sufficient to support all affected households. The operation will therefore prioritize those experiencing the highest levels of humanitarian need and the lowest coping capacities, ensuring that assistance is directed to households facing the greatest risk of deterioration in living conditions.

Targeting will focus on households that meet one or more of the following primary criteria:

- Significant damage to housing, particularly roofs, windows, and other essential structural components affecting minimum safe living conditions;
- Damage to essential household items resulting from rainfall entering homes through damaged roofs and windows;
- Limited capacity to undertake urgent repairs or replace essential household items without external assistance;
- Lack of insurance coverage or access to compensation mechanisms;
- Existing socioeconomic vulnerabilities that reduce household coping capacity.

Households that have sustained damage but possess sufficient financial resources, savings, insurance coverage, or access to other support mechanisms to address urgent repairs and replace essential household items independently will not be prioritized for assistance.

Detailed household-level assessments will be conducted jointly by ARCS and local authorities to verify damages, assess vulnerabilities, and ensure transparent and accountable beneficiary selection. Targeting criteria and beneficiary selection approaches will be validated through consultations with local authorities, community representatives, and affected communities. Coordination with municipal authorities and other stakeholders will help avoid duplication of assistance and ensure complementarity with any government-supported support measures.

Particular attention will be given to vulnerable groups with reduced coping capacities, including:

- Older persons living alone;
- Persons with disabilities and individuals with chronic health conditions;
- Female-headed and single-parent households;
- Low-income households with limited financial resources;
- Families with multiple children or dependents;
- Households with limited social support networks and reduced coping capacities;
- Other socially vulnerable households identified through assessments.

Livelihood and agricultural losses will be considered only as secondary vulnerability factors during assessments, particularly where such losses further reduce a household's ability to address urgent shelter-related needs and maintain minimum living conditions. Livelihood,



agricultural, livestock, vehicle, or income losses alone will not constitute a basis for assistance.

Protection, Gender and Inclusion (PGI) considerations will be integrated throughout the targeting process to ensure equitable access to assistance and prevent exclusion of vulnerable groups. Targeting criteria and selection processes will be communicated transparently to affected communities, and complaints and response mechanisms will be available throughout the operation to support accountability and community participation.

Through this vulnerability-based targeting approach, the operation seeks to ensure that limited resources reach households with the most urgent humanitarian needs, the highest levels of housing damage, and the lowest capacity to restore minimum safe living conditions without external assistance.

## Explain the selection criteria for the targeted population

The selection of beneficiaries will be based on a needs-based and vulnerability-focused approach, prioritizing households most affected by the hailstorm and those with limited capacity to recover independently. Given that the number of affected households exceeds the resources available through the operation, assistance will be targeted to those facing the greatest humanitarian needs and the highest risk of deterioration in living conditions.

### Primary selection criteria

Households must meet one or more of the following criteria:

- Significant damage to housing, particularly roofs, windows, and other structural elements affecting minimum safe living conditions;
- Damage to essential household items resulting from rainfall entering homes through damaged roofs and windows;
- Limited financial capacity to undertake urgent repairs or replace essential household items without external assistance;
- Lack of insurance coverage or access to compensation mechanisms;
- Limited coping capacity and inability to recover independently from the immediate humanitarian consequences of the disaster.

Households that have sustained damage but possess sufficient financial resources, savings, insurance coverage, or access to other support mechanisms to address urgent repairs and replace essential household items independently will not be prioritized for assistance.

### Secondary vulnerability criteria

Among households meeting the primary criteria, priority will be given to:

- Older persons living alone;
- Persons with disabilities and individuals with chronic health conditions;
- Female-headed and single-parent households;
- Low-income households with limited financial resources;
- Families with multiple children or dependents;
- Households with limited social support networks and reduced coping capacities;
- Other socially vulnerable households identified through assessments.

Livelihood and agricultural losses will be considered only as secondary vulnerability factors during the assessment process where such losses further reduce a household's ability to address urgent shelter-related needs and maintain minimum living conditions. Livelihood, agricultural, livestock, vehicle, or income losses alone will not constitute a basis for assistance. Assistance is not intended to compensate for agricultural production losses, livestock losses, vehicle damage, or loss of income.

Beneficiary selection will be based on detailed household-level assessments conducted by ARCS in close coordination with local authorities, community representatives, and affected communities. Assessment findings and targeting criteria will be validated through consultations with community representatives and local authorities to ensure transparency, accountability, and community acceptance. Coordination with local authorities and other stakeholders will also help avoid duplication of assistance and ensure that available resources are directed towards households with the greatest humanitarian needs.

By combining impact-based and vulnerability-based criteria, the operation seeks to ensure that assistance reaches those most affected by damage to housing and essential household assets and those least able to restore minimum safe living conditions without external support, thereby maximizing the humanitarian impact of the intervention.



# Total Targeted Population

Women	930	Rural	-
Girls (under 18)	-	Urban	-
Men	620	People with disabilities (estimated)	-
Boys (under 18)	-		
Total targeted population	1,550		

## Risk and Security Considerations (including "management")

Does your National Society have anti-fraud and corruption policy?	Yes
Does your National Society have prevention of sexual exploitation and abuse policy?	Yes
Does your National Society have child protection/child safeguarding policy?	Yes
Does your National Society have whistleblower protection policy?	Yes
Does your National Society have anti-sexual harassment policy?	Yes

Please analyse and indicate potential risks for this operation, its root causes and mitigation actions.

Risk	Mitigation action
<p>Risk: Operational risk – Delays in assessments, verification, and targeting due to the large number of affected households and the need to validate damage and vulnerability data across multiple communities.</p> <p>Root cause: The hailstorm affected a wide geographic area, resulting in significant damage to housing and household assets across numerous communities. Verification of damages and vulnerability criteria requires coordination among multiple stakeholders and may take time.</p> <p>Potential impact: Delays in beneficiary selection and assistance delivery may</p>	<p>Mobilization of trained ARCS staff and volunteers from local branches; Use of standardized assessment tools and digital data collection systems; Close coordination with local authorities and community representatives to verify assessment data; Prioritization of the most affected communities and households with the highest vulnerability levels; Regular review and monitoring of assessment progress through the ARCS Emergency Operations Centre (EOC).</p>



<p>prevent affected households from addressing urgent shelter-related and basic household needs in a timely manner, increasing the risk of further deterioration of living conditions and negative impacts on health, safety, and well-being.</p>	
<p><b>Risk:</b> Environmental and climate risk – Additional severe weather events, rainfall, storms, or hail may further damage affected homes and livelihoods during the implementation period.</p> <p><b>Root cause:</b> Lori Region is exposed to seasonal severe weather events, and climate-related hazards have become increasingly frequent and intense in recent years.</p> <p><b>Potential impact:</b> Further damage to housing, infrastructure, and agricultural assets could increase humanitarian needs, affect recovery efforts, and create additional pressure on operational resources.</p>	<p>Continuous monitoring of weather forecasts and early warning information;</p> <p>Flexible operational planning allowing adjustment of implementation schedules if required;</p> <p>Prioritization of households facing the greatest shelter-related risks;</p> <p>Regular coordination with local authorities and emergency services regarding evolving risks;</p> <p>Integration of risk reduction and preparedness messages during community engagement activities.</p>
<p><b>Risk:</b> Financial and market risk – Fluctuations in prices of construction materials, household goods, and essential commodities may reduce the effectiveness of cash assistance.</p> <p><b>Root cause:</b> Increased local demand following the disaster may temporarily affect market prices and availability of key goods required for recovery.</p> <p><b>Potential impact:</b> Beneficiaries may be unable to fully meet priority needs using the planned transfer value, potentially reducing the humanitarian impact of the operation.</p>	<p>Conduct market monitoring before and during implementation;</p> <p>Review transfer values if significant market changes are identified;</p> <p>Maintain close communication with local suppliers and markets;</p> <p>Utilize flexible cash programming approaches in accordance with IFRC guidance;</p> <p>Monitor beneficiary feedback regarding purchasing power and market access.</p>
<p><b>Risk:</b> Coordination risk – Overlap or gaps in assistance due to evolving government support measures and interventions from other actors.</p> <p><b>Root cause:</b> Damage assessments and recovery planning are ongoing, and additional support mechanisms may be introduced during implementation.</p> <p><b>Potential impact:</b> Potential duplication of assistance, exclusion of vulnerable households, or inefficient use of available resources.</p>	<p>Maintain regular coordination with municipal, regional, and national authorities;</p> <p>Participate in all relevant coordination meetings and information-sharing platforms;</p> <p>Conduct joint verification and targeting where feasible;</p> <p>Regularly update beneficiary lists and response plans based on available information;</p> <p>Use community feedback mechanisms to identify potential gaps or overlaps.</p>
<p><b>Risk:</b> Accountability and protection risk – Perceptions of unfair targeting, exclusion errors, or dissatisfaction among affected households not selected for assistance.</p> <p><b>Root cause:</b> The number of affected households significantly exceeds the resources available through the operation, requiring prioritization of the most vulnerable households.</p>	<p>Establish and communicate clear targeting and eligibility criteria;</p> <p>Integrate Community Engagement and Accountability (CEA) throughout the operation;</p> <p>Provide accessible feedback and complaints mechanisms;</p> <p>Ensure transparency regarding available resources and prioritization decisions;</p> <p>Apply Protection, Gender and Inclusion (PGI) principles throughout assessments and beneficiary selection processes;</p> <p>Maintain close coordination with local authorities and other stakeholders to ensure complementarity with existing and</p>



**Potential impact:**

Reduced community trust, complaints, reputational risks, and challenges to effective implementation.

**planned support measures;**

Regularly communicate available referral pathways and information on other assistance opportunities where applicable.

**Please indicate any security and safety concerns for this operation:**

The operational context in Stepanavan and surrounding communities in Lori Region is generally stable and is not affected by active conflict, civil unrest, or significant criminal activity. Therefore, no major security threats related to conflict or insecurity are anticipated during the implementation of this operation. The primary concerns relate to environmental, operational, and occupational safety risks associated with response activities in disaster-affected areas.

The main safety concerns include:

- Damaged housing and infrastructure: Partially damaged roofs, broken windows, unstable structures, and debris may pose injury risks to staff, volunteers, contractors, and affected populations during assessments, distributions, and monitoring activities.
- Adverse weather conditions: Additional rainfall, storms, or severe weather events may further damage affected properties, create unsafe working conditions, and temporarily limit access to affected communities.
- Rural and mountainous terrain: Some affected communities are located in areas with challenging terrain and road conditions, which may increase transportation and travel-related risks, particularly during adverse weather.
- Volunteer and staff well-being: Intensive assessment, targeting, and response activities may create risks related to fatigue, stress, and workload management, particularly during the initial phase of the operation.
- Community expectations and tensions: Given that the number of affected households exceeds the resources available through the operation, some households may not qualify for assistance. This may create dissatisfaction, complaints, or tensions if targeting criteria are not clearly communicated.
- Health and hygiene concerns: Damaged housing and temporary living conditions may expose affected households to health risks associated with dampness, poor shelter conditions, and limited access to safe living environments.

To mitigate these risks, ARCS will implement established security and safety procedures and ensure that all operational activities are conducted in accordance with the National Society's security regulations and IFRC safety standards. Key mitigation measures include:

- Conducting safety briefings for staff and volunteers prior to field deployment;
- Utilizing appropriate personal protective equipment (PPE) when conducting assessments in damaged structures;
- Monitoring weather conditions and adjusting field activities when necessary;
- Applying safe driving procedures and transportation protocols, particularly in rural and mountainous areas;
- Maintaining regular communication between field teams and ARCS Emergency Operations Centres;
- Implementing staff and volunteer welfare measures, including workload management and supervision;
- Ensuring transparent communication with communities regarding targeting criteria, available assistance, and operational limitations;
- Maintaining accessible feedback and complaints mechanisms to address concerns and reduce potential tensions.

At present, no extraordinary security measures or additional security resources are required for the operation. The security situation will continue to be monitored throughout implementation, and operational arrangements will be adjusted as necessary to ensure the safety and well-being of staff, volunteers, and affected communities.

Has the child safeguarding risk analysis assessment been completed?

**Yes**

# Planned Intervention



## Multi Purpose Cash

**Budget:** CHF 212,894

**Targeted Persons:** 1,550



## Indicators

Title	Target
# of people supported through multi-purpose cash assistance.	1,550
% of assisted households reporting improved ability to maintain minimum safe living conditions following the assistance received	80

## Priority Actions

A total of 1,550 vulnerable people affected by the hailstorm will be supported through multi-purpose cash assistance. This intervention has been selected based on assessment findings, which revealed significant damage to roofs, windows, and other housing components, as well as damage to essential household items resulting from rainfall entering affected homes. Many households are facing deteriorating living conditions and require urgent support to restore minimum safe and dignified living conditions.

Multi-purpose cash assistance will enable affected households to address their most urgent needs according to their individual circumstances, including minor shelter repairs, replacement of essential household items, purchase of construction materials, and coverage of immediate household expenditures required to maintain minimum safe living conditions. The assistance is intended to address urgent humanitarian needs arising from damage to housing and essential household assets and is not intended as compensation for agricultural, livestock, vehicle, or livelihood losses.

The selection of people to be supported will be carried out through detailed household-level assessments in close coordination with relevant authorities, including the Stepanavan Municipality, the Unified Social Service, community representatives, and other local stakeholders. Targeting criteria and beneficiary selection approaches will be validated through community consultations to ensure transparency, accountability, and community acceptance. Coordination with authorities and other stakeholders will help avoid duplication of support, including assistance provided through government institutions, insurance mechanisms, or other actors.

Priority will be given to households whose homes have sustained significant damage and who have limited coping capacities or insufficient resources to undertake urgent repairs independently. Particular attention will be given to older persons living alone, persons with disabilities, individuals with chronic health conditions, female-headed households, low-income families, households without insurance coverage or access to compensation mechanisms, and other socially vulnerable groups. Livelihood and agricultural losses will be considered as secondary vulnerability factors where they further reduce a household's ability to address urgent shelter-related needs.

Cash transfers will be delivered directly to beneficiaries through bank transfers to their personal bank accounts, ensuring a secure, transparent, and efficient delivery mechanism. By providing flexible and dignified assistance, the intervention will support affected households in addressing urgent humanitarian needs and restoring minimum safe living conditions.



## Community Engagement And Accountability

**Budget:** CHF 5,858

**Targeted Persons:** -

## Indicators

Title	Target
# of needs assessments conducted	1
# of targeted households receiving information on eligibility criteria, assistance modalities, and available complaints channels	300
% of feedback/complaints received and addressed	100



## Priority Actions

Community Engagement and Accountability (CEA) will be integrated throughout the operation to ensure that affected communities are informed, consulted, and able to participate in decisions affecting the assistance they receive. Given the scale of the impact and the limited resources available compared to the overall needs, transparent communication and community participation will be essential to ensure accountability, manage expectations, and support community acceptance of the response.

As part of the detailed household-level assessments, ARCS will work closely with the municipality, the Unified Social Service (USS), community representatives, and other local stakeholders to verify damages, identify vulnerable households, and validate targeting criteria and beneficiary selection approaches. Community consultations, including meetings with community representatives and local leaders, will support transparency and help ensure that assistance reaches households facing the greatest humanitarian needs.

ARCS will provide clear, timely, and accessible information regarding eligibility criteria, targeting processes, assistance modalities, distribution arrangements, and available support. Particular attention will be given to ensuring that information is accessible to older persons, persons with disabilities, individuals with chronic health conditions, and other vulnerable groups.

As part of the household assessment process, ARCS will identify preferred communication channels by asking affected households how they would prefer to contact the Armenian Red Cross Society if they have a question or concern regarding the assistance process. This information will help ensure that communication and complaints channels are appropriate and accessible for the affected population.

A complaints and response mechanism will be established and promoted throughout the operation. Affected individuals will be able to ask questions, raise concerns, or report issues through multiple channels, including direct communication with ARCS staff and volunteers, field visits, community meetings, and the ARCS call centre. All complaints and concerns will be documented, monitored, and addressed through established procedures.

Risk reduction and preparedness messages will also be integrated into community engagement activities. Information on severe weather risks, household preparedness measures, protection of essential household assets, and available seasonal weather and climate information will be shared with affected communities to support preparedness for future weather-related emergencies.

CEA activities will contribute to transparent, accountable, and people-centred assistance while supporting continuous adaptation of the response based on community priorities, concerns, and feedback.



## Secretariat Services

**Budget:** CHF 1,065

**Targeted Persons:** -

## Indicators

Title	Target
-------	--------

## Priority Actions

The IFRC Country Office in Armenia will support the ARCS in the implementation of the DREF operation by providing technical assistance finance and administration, procurement, logistics, and communications to ensure compliance with DREF requirements and IFRC standards. In addition, the IFRC CO will support ARCS in monitoring activities and reporting throughout the operation.

The IFRC CO will conduct regular monitoring visits to affected communities to assess implementation progress and provide technical support where required. IFRC staff may also participate in distribution activities for monitoring purposes and support community engagement activities to ensure accountability and responsiveness to the needs of affected populations.



## National Society Strengthening

**Budget:** CHF 27,690

**Targeted Persons:** -



## Indicators

Title	Target
# of volunteers taking part in training sessions	20
% of trained volunteers demonstrating improved knowledge and skills in conducting needs assessments and engaging with affected communities	80
# of Lessons Learned workshops conducted	1

## Priority Actions

The operation will contribute to strengthening the capacities of ARCS staff and volunteers in emergency response, assessment, and community engagement. ARCS will organize training sessions for staff and volunteers on Community Engagement and Accountability (CEA) and Protection, Gender and Inclusion (PGI), with a particular focus on conducting needs assessments in emergency settings. The training will enhance participants' skills in identifying vulnerable households, communicating effectively with affected populations, collecting quality data under time-sensitive conditions, and applying protection-sensitive approaches throughout the assessment and response process. Additional topics, including Psychological First Aid (PFA) and MPCA, will also be incorporated to strengthen the overall response capacity of ARCS.

Throughout the operation, ARCS headquarters staff will provide technical guidance and support to branch staff and volunteers to ensure the effective implementation of activities, address operational challenges, and strengthen coordination and response management capacities at the local level.

In addition, a lessons learned workshop will be organized at the end of the operation to capture good practices, challenges, and key lessons from the response. The findings and recommendations will be used to strengthen future preparedness and response capacities, particularly for weather-related emergencies and rapid-onset disasters.

# About Support Services

## How many staff and volunteers will be involved in this operation. Briefly describe their role.

A total of 60 personnel will be involved in the implementation of this operation, including 50 volunteers and 10 staff members of the ARCS, mobilized from the Lori Territorial Branch and ARCS Headquarters in Yerevan.

The operation will be managed under the overall leadership of the ARCS Disaster Management Department, in close coordination with the Lori Territorial Branch, the ARCS Emergency Operations Centre (EOC), local authorities, and the IFRC Country Office.

The 10 staff members will provide technical, operational, and coordination support throughout the operation, including:

Disaster Management (DM) staff: overall coordination, operational planning, implementation oversight, and coordination with authorities and partners;

Multi-purpose cash assistance specialists: design, implementation, monitoring, and accountability of multi-purpose cash assistance activities;

Planning, Monitoring, Evaluation and Reporting (PMER) staff: data management, monitoring, beneficiary tracking, analysis, and reporting;

Community Engagement and Accountability (CEA) and Protection, Gender and Inclusion (PGI) focal points: support community consultations, feedback mechanisms, targeting processes, and inclusion of vulnerable groups;

Logistics and operational support staff: procurement, transportation, warehousing, distribution support, and operational logistics;

Finance and administration staff: financial management, compliance, and operational support.

The 50 volunteers will play a key role in the implementation of field activities. Their responsibilities will include:

-Conducting detailed household-level assessments and beneficiary verification;



- Supporting community outreach, information dissemination, and awareness-raising activities;
- Assisting with beneficiary registration and targeting processes;
- Supporting distribution activities and monitoring of assistance;
- Collecting community feedback and supporting accountability mechanisms;
- Supporting post-distribution monitoring and follow-up visits.

ARCS volunteers are drawn from the affected region and surrounding areas and have previous experience in disaster response, community engagement, and emergency operations. Their knowledge of local communities and established relationships with local authorities will contribute to effective implementation, accurate targeting, and timely delivery of assistance.

ARCS maintains a roster of trained and experienced volunteers who have previously participated in disaster response operations. As a result, the majority of volunteers deployed under this operation already possess core competencies in emergency response, community engagement, and assessment methodologies. The planned training sessions will therefore focus on approximately 20 key volunteers who require refresher training and operation-specific orientation on Community Engagement and Accountability (CEA), Protection, Gender and Inclusion (PGI), safeguarding, multi-purpose cash assistance procedures, complaints and response mechanisms, and assessment tools to ensure standardized implementation of activities.

The combined deployment of trained staff and volunteers will ensure that the operation is implemented efficiently, accountably, and in accordance with IFRC standards, while maintaining strong engagement with affected communities throughout the response.

## **Does your volunteer team reflect the gender, age, and cultural diversity of the people you're helping? What gaps exist in your volunteer team's gender, age, or cultural diversity, and how are you addressing them to ensure inclusive and appropriate support?**

The Armenian Red Cross Society volunteer team involved in this operation largely reflects the demographic and cultural characteristics of the affected communities. Most volunteers are mobilized from the Lori Territorial Branch and neighbouring areas, ensuring familiarity with the local language, cultural norms, and community dynamics. This local presence facilitates effective communication, strengthens community trust, and supports culturally appropriate assistance.

ARCS actively promotes diversity and inclusion within its volunteer network and seeks to ensure balanced representation of women and men, as well as participation of volunteers from different age groups. The operation will involve both younger volunteers and more experienced volunteers, allowing the team to combine local knowledge, technical skills, and community engagement experience. This diversity helps ensure that the needs and perspectives of different population groups are better understood and addressed throughout the response.

Particular attention will be given to maintaining adequate female participation in assessment, targeting, and community engagement activities. Female volunteers play an important role in facilitating communication with women and female-headed households and in ensuring that protection, gender, and inclusion considerations are integrated throughout the operation.

While the current volunteer base is generally representative of the affected population, ARCS recognizes the importance of continuously strengthening diversity and inclusion within its volunteer workforce. Any identified gaps in representation or specific skills will be addressed through targeted deployment of volunteers and staff from other branches or headquarters as required. Protection, Gender and Inclusion (PGI) principles will be integrated into volunteer management and operational activities to ensure that assistance is delivered in a safe, equitable, and dignified manner for all affected groups, including older persons living alone, persons with disabilities, individuals with chronic health conditions, and other vulnerable households.

Through its diverse volunteer network and community-based approach, ARCS is well positioned to provide inclusive, culturally appropriate, and accountable assistance to affected populations throughout the operation.

## **If there is procurement, will it be done by National Society or IFRC?**

Procurement for this operation will be managed by the Armenian Red Cross Society (ARCS) in accordance with ARCS and IFRC procurement procedures, policies, and quality standards. The IFRC Country Office will provide technical guidance and oversight, as required, to ensure compliance with DREF requirements.

As the operation will primarily be implemented through multi-purpose cash assistance (MPCA), procurement requirements are expected to be limited to operational and administrative support needs. Any procurement undertaken during the operation will be conducted



locally whenever possible, in line with applicable procurement procedures and value-for-money principles.

For the multi-purpose cash assistance component, ARCS will implement cash transfers through an appropriate Financial Service Provider (FSP) or banking mechanism, in accordance with IFRC Cash and Voucher Assistance (CVA) procedures. Several transfer modalities are being assessed, including:

Contracting a Financial Service Provider through a competitive procurement process;  
Direct transfers to beneficiaries' bank accounts where feasible and accessible.

The final cash delivery mechanism will be selected based on accessibility, beneficiary preferences, cost-efficiency, market functionality, financial inclusion considerations, and operational feasibility. A review of available service providers and transfer mechanisms will be conducted prior to implementation to ensure that the selected modality enables secure, timely, and accountable delivery of assistance.

Throughout the operation, ARCS, with support from IFRC, will monitor procurement and cash transfer processes to ensure transparency, compliance with applicable standards, accountability, and timely delivery of assistance to targeted households.

## How will this operation be monitored?

The operation will be monitored through a combination of field-level supervision, digital data collection, beneficiary feedback mechanisms, and regular reporting processes to ensure effective implementation, accountability, and achievement of planned outcomes. Monitoring activities will focus on tracking operational progress, assessing the quality and relevance of assistance, and ensuring that support reaches the intended beneficiaries in a timely and transparent manner.

ARCS will regularly monitor progress against planned targets and collect feedback on the effectiveness of the interventions. Monitoring activities will include detailed assessments, post-distribution monitoring, beneficiary satisfaction surveys, and regular reviews of operational data. Feedback and complaints mechanisms, including the ARCS call centre, will be utilized throughout the operation to gather community feedback and strengthen accountability. Progress and implementation challenges will also be reviewed through regular operational meetings and reporting processes.

Particular attention will be given to assessing beneficiary satisfaction, the appropriateness of assistance, targeting accuracy, and the extent to which the interventions contribute to restoring basic living conditions and supporting minimum safe living conditions. Monitoring findings will also be used to identify any unmet or emerging needs and inform adjustments to the response where necessary.

The IFRC Country Office will provide technical monitoring and oversight support throughout the operation. This will include regular review of operational progress, technical guidance on implementation and reporting, and periodic field monitoring visits jointly conducted with ARCS, subject to operational requirements. The IFRC Country Office will also support quality assurance, compliance with DREF standards, and monitoring of operational risks and accountability commitments.

Monitoring findings will be regularly reviewed and used to inform operational decision-making, adjust implementation approaches where necessary, and ensure that the operation remains responsive to the evolving needs of affected communities. In addition, a lessons learned workshop will be conducted at the end of the operation to capture good practices, challenges, and recommendations to strengthen future emergency responses.

## Please briefly explain the National Societies communication strategy for this operation

The Armenian Red Cross Society will implement a multi-channel communications approach to support effective internal coordination, transparent communication with affected communities, and timely information sharing with stakeholders, partners, donors, and the general public throughout the operation.

Internal communication will be maintained through regular coordination between the ARCS Emergency Operations Centre (EOC), Lori Territorial Branch, and ARCS Headquarters in Yerevan. Situation reports, operational updates, coordination meetings, and digital communication platforms will be used to facilitate timely information sharing, operational decision-making, and effective coordination among response teams.

Community Engagement and Accountability (CEA) will be integrated throughout the operation to ensure that affected communities receive timely, accurate, and accessible information regarding available assistance, eligibility criteria, targeting processes, distribution schedules, and feedback mechanisms. Information will be disseminated through community meetings, direct outreach by staff and



volunteers, information materials, and existing communication channels established by ARCS and local authorities.

Two-way communication with communities will be maintained through feedback and complaints mechanisms, including direct interaction with ARCS staff and volunteers, community consultations, and the ARCS helpline. Feedback received from affected populations will be regularly reviewed and used to improve the quality, relevance, and accountability of the response. Particular attention will be given to ensuring that communication channels are accessible to vulnerable groups, including older persons living alone, persons with disabilities, and households with limited access to information.

External communication will aim to increase public awareness of the humanitarian impact of the hailstorm, highlight the response efforts of ARCS and its partners, and promote transparency and accountability. Communication activities may include:

- Updates through ARCS social media platforms and website;
- Human interest stories, photographs, and beneficiary testimonials, subject to informed consent and data protection requirements;
- Press releases and media engagement, where appropriate;
- Visibility materials highlighting the support provided through the IFRC-DREF operation;
- Regular information sharing with local authorities, Movement partners, donors, and other stakeholders.

The IFRC Country Office will support ARCS communication efforts through technical guidance, review of communication products, visibility support, and dissemination of key updates through IFRC communication channels as appropriate. Coordination between ARCS and IFRC communication focal points will ensure consistency of messaging, adherence to Red Cross Red Crescent branding and visibility requirements, and compliance with data protection and ethical communication standards.

Through this integrated communications approach, ARCS aims to ensure transparency, accountability, community participation, and public awareness while supporting the overall effectiveness of the operation.



# Budget Overview



## DREF OPERATION

### MDRAM017 - Armenian Red Cross Society Armenia: Severe Hailstorm in Stepanavan

#### Operating Budget

<b>Planned Operations</b>	<b>218,751</b>
Shelter and Basic Household Items	0
Livelihoods	0
Multi-purpose Cash	212,894
Health	0
Water, Sanitation & Hygiene	0
Protection, Gender and Inclusion	0
Education	0
Migration	0
Risk Reduction, Climate Adaptation and Recovery	0
Community Engagement and Accountability	5,858
Environmental Sustainability	0
<b>Enabling Approaches</b>	<b>28,755</b>
Coordination and Partnerships	0
Secretariat Services	1,065
National Society Strengthening	27,690
<b>TOTAL BUDGET</b>	<b>247,506</b>

*all amounts in Swiss Francs (CHF)*



# Contact Information

For further information, specifically related to this operation please contact:

**National Society contact:** Sergey Sahakyan, Head of DM Department, sergey.sahakyan@redcross.am, +374 60 62 50 67

**IFRC Appeal Manager:** Azamat Baialinov, Head of IFRC CO, azamat.baialinov@ifrc.org

**IFRC Project Manager:** Heghine Poghosyan, IFRC CO PMER Officer, heghine.poghosyan@ifrc.org

**IFRC focal point for the emergency:** David Kohlmann, Lead Operations Coordination, david.kohlmann@ifrc.org, -

**Media Contact:** Nora Peter, IFRC RO Communication coordinator, nora.peter@ifrc.org, +36709537709

**National Societies' Integrity Focal Point:**

Hasmik Khachatryan, Head of the Population Movement Department, hasmik.khachatryan@redcross.am, +374 60 62 50 75

**National Society Hotline:** 8184

[Click here for the reference](#)

