



KRCS Aqua Team conducting Search and Rescue

Appeal: MDRKE070	Hazard: Flood	Country: Kenya	Type of DREF: Response
Crisis Category: Yellow	Event Onset: Sudden	DREF Allocation: CHF 499,977	
Glide Number: -	People Affected: 225,015 people	People Targeted: 12,500 people	
Operation Start Date: 13-03-2026	Operation Timeframe: 4 months	Operation End Date: 31-07-2026	DREF Published: 12-05-2026

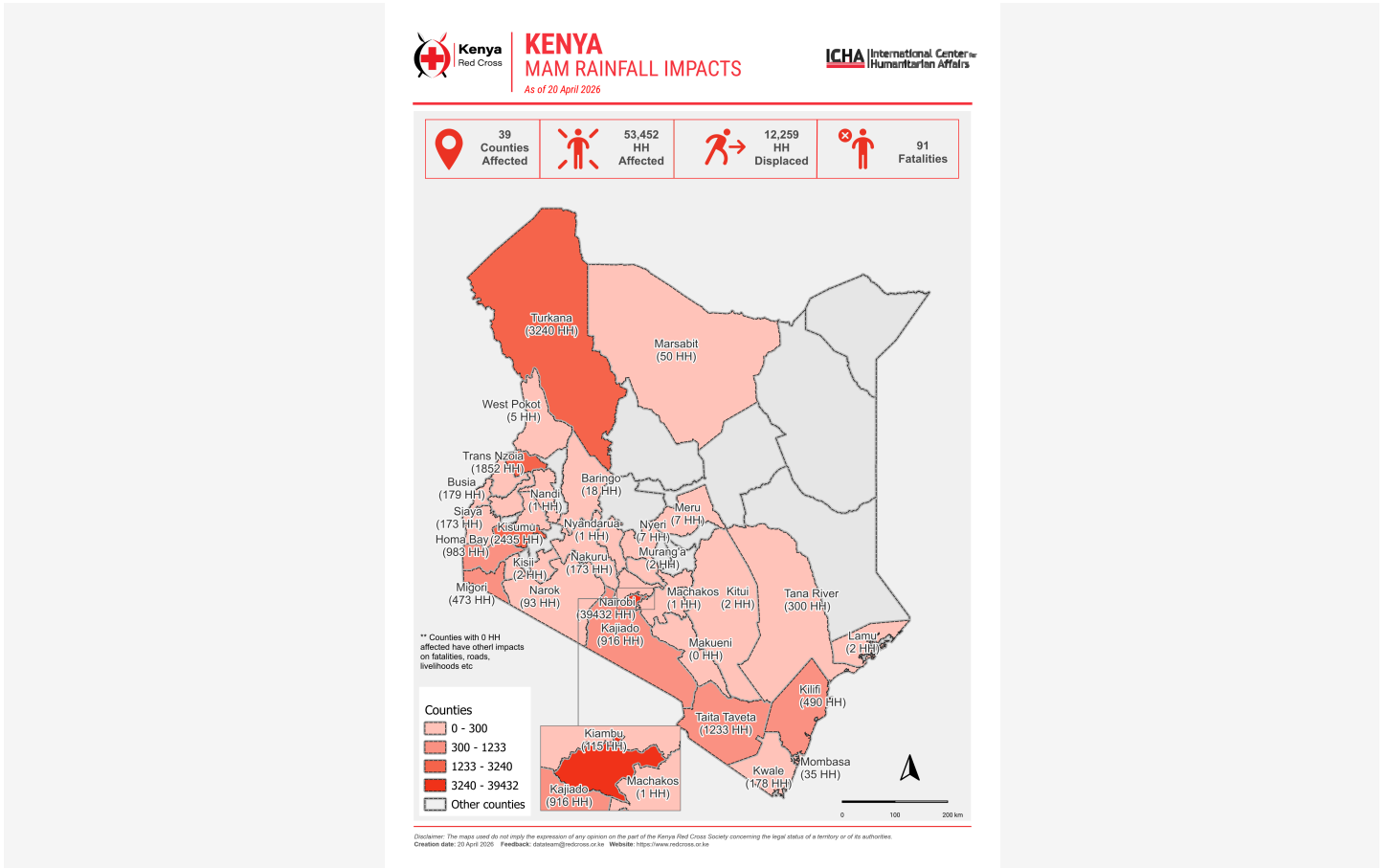
Targeted Regions:

Mombasa, Kwale, Kilifi, Tana River, Lamu, Taita-Taveta, Garissa, Wajir, Mandera, Marsabit, Isiolo, Meru, Tharaka-Nithi, Embu, Kitui, Machakos, Makueni, Nyandarua, Nyeri, Kirinyaga, Murang'a, Kiambu, Turkana, West Pokot, Samburu, Trans Nzoia, Uasin Gishu, Elgeyo-Marakwet, Nandi, Baringo, Laikipia, Nakuru, Narok, Kajiado, Kericho, Bomet, Kakamega, Vihiga, Bungoma, Busia, Siaya, Kisumu, Homa Bay, Migori, Kisii, Nyamira, Nairobi

Description of the Event

Date of event

06-03-2026



Map of Kenya indicating counties effected by floods

What happened, where and when?

Kenya has been experiencing enhanced rains since February 2026, with heavy rainfall being experienced within Western, Rift Valley, Central, Nairobi, Lower Eastern, and parts of Northeastern Region. The Coastal region has experienced windstorms and flood-related effects caused by the rainfall experienced in other parts of the country.

While the impact of the rains has been building since early February, significant impact to which the KRCS mobilized a national response started from 16th February 2026 with heavy rains, flash floods, and increasing river levels that have caused fatalities, displacement of people, damage of infrastructure, loss of livestock and property, and restricted access to roads in various regions of the country.

On 6th March 2026, at approximately 1830 hours, flash floods struck Nairobi and its surrounding areas following an intense six-hour downpour. Rainfall levels reached unprecedented highs, with 160 mm recorded at the Wilson Airport meteorological station, 145 mm at Moi Air Base, 112 mm in Dagoretti, and 117 mm at the Kabete station, all within a span of 3 to 5 hours. The capital city had just experienced over 534mm of rainfall.

The heavy rains swept away bridges, destroyed homes, and rendered major roads impassable, leaving hundreds of residents displaced. The combination of loss of life, widespread property damage, and significant disruption to critical infrastructure further compounded the crisis. Nationwide, 53 people lost their lives, including 27 fatalities in Nairobi in a single night.

The long rains season is ongoing until end of May 2026.





Aerial Assessment of flood effects in Nairobi



Affected area in Grogan, Nairobi



KRCS Conducting rescue operations in Nairobi

Scope and Scale

The country has marked the onset of the MAM 2026 long rains. Impact of the rains continue being felt in counties that have received rain or have rivers flowing towards them. The current heavy rainfall impacts have been experienced in the country, so far affecting 28 counties.

Areas of particular concern include Migori, Kisumu, Siaya, Busia, Kajiado, Migori, Taita Taveta, Kwale, Homa Bay, Makueni, Turkana, and Nairobi Counties.

KRCS is conducting continuous needs assessments to evaluate the flood impacts and priority humanitarian needs. The latest Kenya Red Cross Emergency Operation Center reports a total of 44,088 households have been affected, 7,182 households remain displaced and are in need of continued support. 59 people have lost their lives, 17 missing, 27 casualties. 304 livestock have been lost, and 5,625 acres of crops affected, 21 schools, 7 health facilities, 125 businesses affected and 22 water sources destroyed. Prolonged and intense rainfall has led to rising water levels in low-lying and lakeside areas, resulting in displacement of homes, and disrupted livelihoods. The floods have worsened food insecurity and malnutrition in the affected areas, limiting access to nutritious food, clean water, and proper sanitation. Displacement, loss of livelihoods, and disruptions to food supply chains have further intensified the problem.

Specific region and county updates include:

- West Kenya Region: 1,857 HHs have been affected out of which 621 HHs have found temporary refuge within their communities, 567 HHs remain in evacuation camps in both Homabay and Migori Counties. 6 camps remain active with 3 having been closed. 3,949 acres of farmland has been destroyed in Kisumu, Siaya, Migori and Homabay Counties. 4 markets has so far been closed in Homabay County (Suna Mirindi, Lwanda centre and Lwanda B Duka market in Migori and Chuowe market). 19 shallow wells have equally been destroyed in Kisumu, Homabay and Migori Counties. Eleven (11) schools and 1 health facility have been affected, 18 businesses destroyed, and 225 livestock deaths reported.
 - Nairobi: Areas affected include Zimmerman, Landmawe, Kariobangi, Kibera, River Road, Taj Mall, Langata, Kangemi, Embakasi, Kamukunji, Muungano Soweto, Kibagare, and South B (Fuata Nyayo), resulting in eleven (27) fatalities, 21 casualties, and approximately 1,625 HHs affected. Other areas highly affected are Kware, Zimmerman, Mukuru Kwa Reuben, and Kiamaiiko areas, which reported trapped persons.
 - Transmara Narok: Mogor Bridge connecting Kilgoris and Lolgorian was swept away, and electrical infrastructure damages reported in Kwale. A section of Migori bridge is also damaged by floods. All figures below are expected to increase as more information becomes available and as heavy rainfall has been forecasted.
 - Migori County: ongoing MAM rains are affecting Uriri, Suna East, Suna West & Nyatike sub-counties. 256 HHs affected (1,873 persons), 45 HHs displaced (234 persons), 2 fatalities, 8 schools affected, 67 latrines damaged
 - Makueni County: Strong winds were in Kaseve Area and Wote. 15HHs were affected. 1 casualty was reported.
 - Meru County: Strong winds were reported in Bullu Village. 18HHs and 6 casualties were reported.
 - Kilifi County: Strong winds were reported at Kaloleni and Magarini Sub-Counties; approximately 300HHs and 1HH, respectively, were affected.
 - Kwale County: Following heavy rains in Wamasa B village, Kinango in Kwale County, a lightning strike killed 14 shoats.
 - Taita Taveta: 3HHs have been affected in Maungu by heavy rains and strong winds. Approximately 25 HHs and business centres in Miasenyi have been destroyed due to heavy rainfall accompanied by strong winds.
 - Kajiado: Areas affected are Tinga, Rombo, Ololua, Balozi & Kitrengela reserve, resulting in 2 casualties, 1 fatality, and 1 missing person.
 - Kwale: 1 fatality reported as a result of lightning strike.
 - Homabay – R, Miriu, and Odagla streams burst their banks, affecting approximately 270 HHs in Osodo and 111 HHs in Kobuya. Approximately 56 Hectares destroyed
 - Makueni - R.Sultan Hamud burst its banks, affecting traffic along the Machakos-Wote-Makindu route.
 - Turkana- areas affected include Lodwar & Kakuma.
 - Tana River County: there is shortage and stock out of essential drugs in the health facilities. Disease surveillance teams are on standby while monitoring possible disease outbreak especially in Tana River, Lamu and Mombasa counties which are at a high risk of cholera outbreak. A total of 50 latrines were submerged in Tana River County posing a risk of disease outbreak in the community.
 - Lamu County: A total of 13 diarrhea cases were reported in Kiunga, Lamu County (8 below 5 years and 5 cases above 5 years). All these

cases are being managed at the health facility. Additionally, a total of 12 Dengue fever cases among were also reported in Kiunga, Lamu county and the cases are being managed at the health facility.

In addition, moderate to heavy rainfall is projected over the Ethiopian Highlands and eastern parts of Uganda, affecting the West Kenya Region. Consequently, counties bordering Uganda, particularly West Pokot and Turkana, as well as areas along the Kenya–Ethiopia border, remain at elevated risk of flash floods and riverine flooding due to intense storms and potential upstream flows.

The Kenya Red Cross Society (KRCS) has mobilized its teams on the ground in response to the unfolding humanitarian crisis. Staff and volunteers are working tirelessly to address the immediate needs of the affected population, including the provision of emergency shelter, essential non-food items, and critical water, sanitation, and hygiene (WASH) services.

In anticipation of continued moderate to heavy rainfall across several regions, KRCS issued and maintained an active rainfall advisory to support timely preparedness, early action, and coordinated response efforts. The KRCS continues to undertake lifesaving search and rescue operations, provide emergency relief, and support the management of evacuation camps for displaced families.

Source Name	Source Link
1. Kenya red cross National EOC Situation Report	https://kenyaredcross-my.sharepoint.com/:w:/g/personal/odhiambo_dennis_redcross_or_ke/IQAXYyVI_v5fTJ4fugLjllJAQY_gjQ69F5Wjy32FuibRcg
2. Kenya Met MAM Long Rains Season Outlook	https://meteo.go.ke/documents/2537/March-April-May_MAM_2026_Seasonal_Weather_Forecast.pdf
3. KMD MAM Rains Season March forecast.	https://meteo.go.ke/documents/2765/March_2026_Forecast.pdf
4. KRCS on twitter	https://x.com/kenyaredcross/status/2030356210440863840?s=46&t=gNOjX4xaxaKzT8lC5Af9w
5. The Star Magazine	https://www.the-star.co.ke/news/infographics/2026-03-09-kenyas-flood-toll-by-the-numbers

Previous Operations

Has a similar event affected the same area(s) in the last 3 years?	Yes
Did it affect the same population group?	Yes
Did the National Society respond?	Yes
Did the National Society request funding form DREF for that event(s)	Yes
If yes, please specify which operation	OND 2025 Flood response

If you have answered yes to all questions above, justify why the use of DREF for a recurrent event, or how this event should not be considered recurrent:

The disaster is natural in nature and cyclic too. The magnitude and scale of the trigger events was well beyond any historical events. One Met station (Wilson Airport) recorded 160mm within 12HRs.



Lessons learned:

Previous operations have contributed to numerous lessons as listed below. There is a need to:

- Review the EAP thresholds and triggers to accommodate changing climatic trends in disaster response.
- Integrate both in-kind and Cash assistance during the response to support affected communities.
- Need to have early action in relation to epidemics and the climatic outlook.
- Support communities with more long-lasting livelihood activities, which will support them in diversifying their livelihood activities and which are more sustainable.
- Need for professional water safety and water rescue teams.
- Early warning messages are effective in having people self-evacuate.
- Increase capacity strengthening across the country.

Did you complete the Child Safeguarding Risk Analysis in previous operations, what was risk level?

Yes

What was the risk level for Child Safeguarding Risk Analysis?:

Low, mechanisms are always available in public for reporting and all staff are signatories to the safeguarding policy.

Current National Society Actions

Start date of National Society actions

07-03-2026

Shelter, Housing And Settlements	As of the 11 March KRCS had 1,219 households with shelter NFIs. So far 13 camps have been established. KRCS is supporting camps and evacuation centers hosting displaced and marooned populations through the provision of food and Non-Food Items (NFIs). In addition, KRCS identified safe evacuation locations and has initiated emergency shelter distributions for affected households using available disaster preparedness stocks.
Livelihoods And Basic Needs	As of the 11 March KRCS has supported 3,586 households with food items.
Health	<p>With effects already reported in a number of health facilities, KRCS is conducting continuous monitoring and assessments in affected areas to establish critical health needs, priority being enhanced disease outbreak surveillance and monitoring following compromise of sanitation and hygiene situation in affected areas. Key priority actions are health assessments, risk communication and community engagement, coordination, ensuring continuity of health services, supporting community-based MHPSS and protection interventions as well as provision of integrated emergency health services through - through medical outreaches to hard-to-reach areas</p> <p>As of the 11 March KRCS has supported 131 people through health outreaches. And KRCS search and rescue teams have rescued at least 6 people. MHPSS sessions in Western Kenya reaching 920 community members.</p> <p>The health risks may increase due to limited access to safe drinking water and increased breeding of mosquitos; flood-related injuries including drowning, trauma, and snake bites; exposure to vector-borne diseases such as malaria and dengue fever; respiratory conditions due to colds and flu; and injuries. Disease surveillance is essential in early detection and reporting of suspected ailments in the community.</p>
Water, Sanitation And Hygiene	Hygiene promotion activities are currently underway, focusing mainly on disease prevention, particularly among displaced populations. In addition, household water treatment interventions are being implemented to ensure safe drinking water at the family level, while the provision of water treatment solutions has also been planned for the displacement centers to safeguard public health and reduce the risk of waterborne diseases.



Risk Reduction, Climate Adaptation And Recovery	<p>As part of KRCS Early Warning in partnership with Safaricom, KRCS issued 17 million heavy rain and Flood warning SMS alerts targeting 44 counties in Kenya.</p> <p>KRCS has trained a total of 720 Red Cross action teams, Community-Based Disaster Response teams, and CHVs. The pieces of refresher training were integrated and done in preparedness for the predicted MAM long rains.</p> <p>2 Boats have been deployed alongside an Aqua-rescue surge team to support rescue and evacuation of marooned communities in parts of Nairobi.</p> <p>Rainfall forecast for the current week indicates Kenyan central highlands (source region of Tana) are expected to continue receiving heavy rainfall. The flood wave is expected to begin overtopping riverbanks along the lower Tana as the rains continue to be experienced over Central Highland areas of Kenya.</p>
Coordination	<p>The CS Ministry for Public Service, Human Capital Development and Special Programmes is coordinating meetings with the national and county governments and relevant local actors for the first response to the floods. Internally KRCS through the DM Ops department is coordinating the country wide flood response.</p>
National Society Readiness	<p>KRCS has a set of flood Early Action protocols supported through a Finnish Red Cross project. The EAP priority actions will continue to focus on these counties, also part of the at-risk counties. Both this DREF and EAP include the early actions, but under this intervention, it focuses on early warning messages and support for the evacuation.</p>
Assessment	<p>KRCS conducted assessments and is conducting continuous assessments alongside distributions to those affected in West Kenya, Central, Upper, Coast, Lower Eastern and North Rift Regions.</p> <p>KRCS has been conducting assessments to determine the impact of the affected population. This has been done in coordination with other stakeholders using the Kenya Inter-Agency Rapid Assessment tool. Aerial assessments have also been conducted in areas that have been highly impacted by the above-average rainfall in Nairobi County.</p> <p>Surveillance and monitoring of emerging flooding events is ongoing</p>
Resource Mobilization	<p>KRCS has initiated support requests with various domestic and bilateral partner national societies.</p> <p>DREF Application ongoing.</p>
Activation Of Contingency Plans	<p>KRCS has activated its floods response plan.</p>

IFRC Network Actions Related To The Current Event

Secretariat	<p>The International Federation of Red Cross and Red Crescent Societies (IFRC) has an in-country presence in Kenya, through its Africa Regional Office and the Nairobi Cluster Delegation, which are based in Nairobi.</p> <p>The IFRC Nairobi Cluster Delegation has been providing close technical support and guidance to the KRCS on the development of a request for a DREF allocation to support the ongoing efforts to aid those affected by the floods.</p>
Participating National Societies	<p>KRCS has been issuing updates to its PNSs and partners on the unfolding situation in the country. There is no ongoing support from any of the in-country PNS so far. However, KRCS is updating the in-country PNS on emerging gaps.</p>



ICRC Actions Related To The Current Event

Yes ICRC has a strong presence in Kenya and working in the affected areas, in particular Nairobi. KRCS has updated the ICRC on the unfolding situation. Currently ICR is not supporting this operation.

Other Actors Actions Related To The Current Event

Government has requested international assistance	No
National authorities	Kenya Meteorological Department is providing daily, weekly and monthly forecasts to enhance early warning and response. County governments are responding at a local level. KRCS Via Safaricom issued 17M early warning SMS.
UN or other actors	Kenya Red Cross has been coordinating its response activities with other actors, including the National and County government line ministries and agencies. KRCS is designated operational in humanitarian work in the country, especially managing displacement camps, including camp setup and Management. The other partners come up with support and come up with sectoral contributions based on their expertise and mandates. The national and county governments have taken a lead role in coordinating the response planning and implementation. Regular coordination meetings on shelter clusters will be conducted.

Are there major coordination mechanism in place?

KRCS is providing technical leadership. There is no commitment of resource preparedness to date, hence the need to initiate mobilization of essential resources from other sources.

Needs (Gaps) Identified



Shelter Housing And Settlements

The KRCS situation report indicated that up to 44,088 households (approximately 225,015 people) have been affected. Of these, 7,197 households have been displaced and remain in need of continued humanitarian assistance. To support those displaced, 13 evacuation centers/camps have been established.

The displaced population has lost most of their property and now requires immediate shelter support along with essential household items. Housing typologies in the affected areas vary widely, ranging from lightweight structures in rural and informal settlements to more established peri-urban and urban housing forms, all of which have sustained varying levels of damage.



Livelihoods And Basic Needs

The affected population is in need of immediate food assistance and food support. KRCS assessment report, done jointly with county governments, shows that up to 304 livestock have been lost, at least 5,625 acreage of crops affected, and stored foodstuff has been washed away. This destruction affects both subsistence farmers and those reliant on produce sales, reducing incomes and local food availability. Markets have been disrupted due to cut-off road and damaged infrastructure. Those displaced and are living in temporary camps have had their income-earning opportunities severely disrupted.





Health

With disruption of health facility operations already reported in the counties, there is a need to closely monitor access to health services by the communities to ensure there is no disruption of business continuity in health facilities at static sites or through integrated outreaches. Patients with chronic illness may be lost to follow-up, health facilities may be unable to hold scheduled activities like routine immunization, delivery of supplies to health facilities may be a challenge, and breakdown of major equipment may hinder service delivery. There is expected disruption of delivery of pharmaceutical supplies such as essential medicines, vaccines, etc., due to road inaccessibility in affected areas, as well as disrupted delivery of non-pharmaceutical commodities such as laboratory supplies, and theatre consumables, plus disrupted delivery of non-medical supplies such as patients' food.

The anticipated heavy rains may still increase malaria transmission due to flooding, mosquito breeding sites, and increased exposure among displaced or marginalized communities. As an auxiliary to the government, the Kenya Red Cross Society (KRCS) plans to complement these efforts by supporting 1,000 households through Indoor Residual Spraying using available Fludora Fusion insecticide, training vector control teams, distributing Guardian mosquito repellents, and conducting community awareness and risk communication on malaria prevention. These interventions aim to reduce mosquito exposure and strengthen malaria prevention during the high-risk rainy season. Key priority actions are health assessments, risk communication and community engagement, coordination, ensuring continuity of health services, supporting community-based MHPSS and protection interventions as well as provision of integrated emergency health services through - through medical outreaches to hard-to-reach areas. Need to support sensitization of Community Health Volunteers (CHVs) on surveillance due to the elevated risk of water and vector-borne disease outbreaks.



Water, Sanitation And Hygiene

In many areas, wells, boreholes, and piped systems were submerged or damaged. Floodwaters severely contaminated multiple water sources across affected counties, exposing communities to unsafe drinking water. The anticipated health risks are increasing due to a lack of clean water and displacement. These include waterborne diseases such as acute watery diarrhea and cholera. There is a need to kick off sensitizations in the evacuation center to curb the spread.



Protection, Gender And Inclusion

KRCS has identified open grounds and public institutions (Churches, Mosques, schools and administration centers) as evacuation centers to accommodate displaced families.

With the scope of the exposed communities in identified areas at-risk, with considerations of vulnerable groups including infants, older people, homeless, and people with chronic health conditions, it is important. A particular interest for the early actions will be to prevent them from further harm.

Any identified gaps/limitations in the assessment

Road/infrastructure damage has led to reduced access to health facilities, increasing exposure to protection risks.

Lack of agencies responding to Aqua Rescue to distress calls.

Continuous flooding events are likely to happen over the months, while some areas have limited support or early actions.

Operational Strategy

Overall objective of the operation

This DREF allocation aims at supporting at least 2,500 most affected households (approximately 12,500 people) by providing emergency shelter, Health, WASH, Protection of gender and inclusion (PGI) support in 8 counties affected for 4 months (March-June 31st, 2026). Based on initial assessments the priority target counties are Western (Busia, Migori, Siaya), Lower eastern (Nairobi), North Rift (Turkana) and Coast (Kwale, Kilifi, Tana River).

Based on current reported impact and forecasts, this intervention provides resources to enhance and complement the KRCS actions that started from early warning phase with flood risk reduction and lifesaving warnings for over 17m people while focusing the response to a direct target of 2,500 HHs (12,500 people).



Operation strategy rationale

The operation will support victims of the floods for four months, through provision of:

Early warning and search and rescue: early warning, immediate search, rescue and support to the early evacuation. It will also have post-evacuation.

Emergency Shelter: 12,500 people reached through the distribution kitchen sets, tarpaulin, blankets and sleeping mats. KRCS will also continue to support families still displaced in camps.

Livelihoods and basic needs: 12,500 people reached through the distribution of in-kind food items.

Primary health service including HPSS: At least 12,500 people will be reached through health activities. KRCS will implement health response actions guided by the national sector specific priority action plans and continue to review its strategy based on additional information from continuous assessments, focusing on community level disease surveillance, risk communication and community engagement, vector control, enhance access to essential health services while integrating mental health and psychosocial support services to affected communities. Finally, the provision of body bags to support the dignified management of fatalities in severely impacted areas.

WASH: At least 12,500 people will be reached through the planned WASH interventions. Activities will include the rehabilitation and expansion of existing sanitation facilities and the procurement of handwashing units to enhance access to safe hygiene practices. These efforts will be supported by routine water quality testing at both the source and household levels, together with the procurement of water treatment chemicals, including PUR and chlorine, to ensure a reliable supply of safe drinking water for affected communities. The response will also involve the procurement and distribution of soap, complemented by house-to-house hygiene promotion to reinforce proper sanitation behaviours, alongside community hygiene promotion sessions aimed at strengthening public awareness and reducing health risks. Additionally, the package includes the distribution of toilet slabs to improve sanitation conditions.

Cross cutting program to support families within the different sectors. Attention toward displaced households and families with vulnerable groups, single female led households. The level of engagement, harmonization, and involvement of communities plays a key role in the intended early actions, ensuring the understanding, acceptance, and contribution of the community members to this plan.

Protection Gender and Inclusion: The protection activities will focus on strengthening awareness, prevention, and response mechanisms for vulnerable groups through sensitization on Sexual and Gender-Based Violence (SGBV) and continuous debriefing sessions for response teams to ensure their wellbeing and preparedness. The operation will also prioritize mapping, establishing, and supporting functional GBV referral pathways to enhance safe and timely access to services for survivors. To reinforce capacity within the response structure, staff and volunteers four per county will receive basic training on protection principles, including Child Protection (CP), SGBV, Protection from Sexual Exploitation and Abuse (PSEA), as well as safe identification and referral procedures, ensuring that affected individuals are supported with dignity, safety, and professionalism throughout the response.

Community Engagement and Accountability: CEA activities will be integrated throughout the operation to ensure communities remain at the centre of decision-making and implementation. Through ongoing consultative meetings, community members will help shape preferred feedback channels and actively participate in planning and response processes. A dedicated feedback mechanism will enable timely collection and sharing of community concerns and recommendations across all operational levels, ensuring interventions remain relevant and responsive. To strengthen accountability and transparency, volunteers, staff, and focal points will receive targeted CEA training, with dedicated CEA sessions embedded within all major capacity-building activities. This approach promotes meaningful community ownership, clear communication, and adaptive programming aligned with community needs.

Coordination and Collaboration:

In order to respond to the cholera outbreak comprehensively, effective coordination and collaboration will be essential. KRCS will strengthen available coordination channels both at the county and national level. KRCS will also build partnerships with international organizations, NGOs, and donors that will allow the NS to leverage resources, share expertise, and amplify the impact of their interventions.

Some of the activities listed above are already ongoing and will be covered by replenishment, such as the emergency shelter and NFI package. This DREF will work in coordination with the Finnish Red cross EAPs that have been activated in Lake Victoria and Tana River Basins, such that there is no overlap or duplication of activities. Where there is a need for response activities in the Tana and Lake Victoria Basins, there will be clear disaggregation between the Anticipatory Actions and Response Actions.



Targeting Strategy

Who will be targeted through this operation?

The current operation will have a direct target of 2,500 vulnerable households (12,500 people) displaced by flood waters. Displaced households and families living in public institutions and in evacuation camps will be accorded priority during targeting. Families settling near or living along riverine, highland areas with loose gravel, lowlands, poor drainage, and congested urban areas in the 8 identified high-risk counties will be prioritized for sensitization and awareness to strengthen their readiness.

Explain the selection criteria for the targeted population

Identification and selection will be based on the level of vulnerability, including displaced households due to:

- Level of destruction and damage to homes
- Female headed households
- Households with pregnant and lactating women, children under 5 years old
- Households with disabled
- Households with elderly
- Households with members who are chronically ill

Total Targeted Population

Women	-	Rural	60%
Girls (under 18)	-	Urban	40%
Men	-	People with disabilities (estimated)	-
Boys (under 18)	-		
Total targeted population	12,500		

Risk and Security Considerations (including "management")

Does your National Society have anti-fraud and corruption policy?	Yes
Does your National Society have prevention of sexual exploitation and abuse policy?	Yes
Does your National Society have child protection/child safeguarding policy?	Yes
Does your National Society have whistleblower protection policy?	Yes
Does your National Society have anti-sexual harassment policy?	Yes



Please analyse and indicate potential risks for this operation, its root causes and mitigation actions.

Risk	Mitigation action
Peak of MAM rains is expected in April. Heavy rains and flooding will continue as projected by the KMD. Water levels River Migori, Awach and Nyando rivers have risen and have caused displacements.	KRCS will continue its response as outlined in this DREF plan of action. KRCS will continue monitoring the situation and stand ready to scale-up the operation.
Cholera outbreaks expand to the counties being affected by flood	KRCS has put measures to ensure continued sensitization of the communities on waterborne disease. Subsequently, there is an ongoing response in counties like to be affected by Cholera.
Secondary flooding to the targeted communities in need of support	KRCS will be in constant communication with the targeted communities and provide early warning messages.

Please indicate any security and safety concerns for this operation:

The risk of road traffic accidents and road cut offs is increased in this period due to destruction of key transport infrastructure by floods. KRCS responders will be briefed on effective mission preparation and route planning before departure for any response activities.
We do not anticipate security challenges save for potential scrambling of beneficiaries during distributions.

Has the child safeguarding risk analysis assessment been completed?	Yes
---	-----

Planned Intervention



Shelter Housing And Settlements

Budget: CHF 151,961

Targeted Persons: 12,500

Indicators

Title	Target
# of people reached with emergency shelter	12,500
# of people reached with essential households' items	12,500

Priority Actions

Assessments

Beneficiary identification, registration, and distribution.

Procurement of emergency shelter and essential household items: tarpaulins, blankets, sleeping mats, kitchen sets - 2,500 households.

Primary and secondary transportation, handling, and distribution of NFIs, plus storage.

Shelter Kit Contents

- 1 Kitchen Set
- 2 Blankets



- 2 Sleeping mats
- 2 Tarpaulins
- 2 Jerrycans
- 2 Mosquito nets



Livelihoods And Basic Needs

Budget: CHF 103,906

Targeted Persons: 12,500

Indicators

Title	Target
# of people reached with food rations	12,500

Priority Actions

Beneficiary identification and registration.

Procurement and distribution of food rations – 2,500 households at 50% of needs.

Food distribution costs.

- One household food
- Cereals 7.5KGs
- Pulses 2.5 KGs
- Oil 1 Ltr



Health

Budget: CHF 58,763

Targeted Persons: 12,500

Indicators

Title	Target
# of people reached with health services / hygiene promotion	12,500
# households provided with mosquito nets	2,500
# of health kits - male and female	500
# of individuals provided with emergency SRH services, including reproductive health consultations, contraceptive supplies, clean delivery kits, and menstrual hygiene products.	12,500
# of individuals provided with GBV prevention information, including sessions conducted and materials distributed.	12,500
#Percentage of targeted population reached with SRH and GBV awareness campaigns.	80
# of people provided with MHPSS	2,000



# of children screened and admitted for management of severe and moderate acute malnutrition	1,000
--	-------

Priority Actions

- Refresh and Train Community Health Promoters (CHPs) and Kenya Red Cross Volunteers (KRCS Volunteers) on Hygiene promotion
- Provision of supplies, health commodities, PPEs, vector control commodities, and Logistics Support.
 - Detailed Health risk assessment in flood-affected counties
 - Sensitization of CHPs and KRCS volunteers on Hygiene promotion
 - Integrated Health and nutrition outreaches
 - Risk communication and community engagement (RCCE)
 - Procurement of IEC materials
 - Vector Control Training
 - Coordination meetings. County/National MoH/NPHI and KRCS per diem
 - Mental Health and Psychosocial support for response teams
- Residual Spraying of houses and temporary shelters in areas with stagnant water
- Procurement of body bags



Water, Sanitation And Hygiene

Budget: CHF 70,237

Targeted Persons: 12,500

Indicators

Title	Target
# of people with access to safe drinking water	12,500
# of people reached with hygiene promotion	12,500
# of households reached with WASH NFIs	2,500
# wells disinfected	16
# emergency latrines supported	80

Priority Actions

- Assessment of Water points.
- Disinfecting of contaminated wells in 6 counties.
- Routine water quality testing at the source and at the household level.
- Procurement of water treatment chemicals PUR.
- Procurement of Jerricans. Procurement of toilet slabs.



Protection, Gender And Inclusion

Budget: CHF 9,210

Targeted Persons: 12,500



Indicators

Title	Target
% of people benefiting safe and equitable delivery of basic services taking into account their needs based on gender	100
# of staff and volunteers briefed on PGI minimum requirements	60

Priority Actions

Conduct sensitization on SGBV.

Conduct debriefing sessions for the response teams. Mapping, establishing, and supporting the GBV referral pathway.

Basic training of staff and Volunteers (4 per county) on Protection principles, Child Protection (CP), Sexual and Gender. Based Violence (SGBV), including PSEA and Safe Identification and referral.

RFL services provided.



Community Engagement And Accountability

Budget: CHF 17,627

Targeted Persons: 12,500

Indicators

Title	Target
% of complaints and feedback responded to by the National Society	100
# of consultative meetings per county	20
# volunteers CEA trained/briefed and mobilized	200

Priority Actions

The affected communities out of anger and exposure to flood threats continue to be hostile to our rescuers with accusations of late arrival, while some refuse to be rescued and opt to wait for waters to recede. This misinformation and gap will need to be addressed.

Community Engagement and Accountability (CEA) strategies will be rolled out throughout the implementation of this operation to ensure that the communities are at the centre of all interventions and that there is community ownership.

Consultative meetings will be held with communities during the assessment and the next steps of the implementation. The meetings will be aimed at discussing preferences on feedback channels.

A feedback mechanism will be put in place to get the necessary feedback from community members on issues related to the overall response.

This feedback will be shared with all relevant platforms at community, district and national levels to ensure adjustments in programming where necessary.

The community members in the target areas will be involved as fully as possible in the planning stages and throughout the response, to increase their ownership of the response, sharing clear information about response activities, selection criteria, and distribution processes. CEA activities shall include CEA Training for Volunteers and provincial staff focal points.

Dedicated sessions on CEA will be incorporated into all main trainings that will be carried out for staff and volunteers.

After Action Review meeting.



Secretariat Services

Budget: CHF 20,468



Targeted Persons: 12,500

Indicators

Title	Target
# of Kick-off meeting held within 7 days of DREF approval	1
# of PMER plan developed and implemented	1
# of IFRC CCD monitoring visits conducted and field reports shared	4

Priority Actions

Ensure overall operational coordination in line with IFRC DREF standards and policies.
Convene a kick-off meeting within one week of approval and conduct monthly operational coordination meetings thereafter.
Provide technical and coordination support through the IFRC Country Cluster Delegation (CCD), including PMER, finance, and logistics, in compliance with DREF and IFRC policies.
Ensure effective Membership coordination throughout the operation.
Conduct regular IFRC CCD monitoring and oversight visits, including field monitoring.
Ensure timely operational updates and final reporting in accordance with the Project Agreement and IFRC standards.
Cover salary costs for essential strategic positions required for effective operation delivery.



National Society Strengthening

Budget: CHF 67,805

Targeted Persons: 500

Indicators

Title	Target
# of staff and volunteers trained and mobilized	120

Priority Actions

Early warning activities. Communication and Internet.
E.O.C. Support Volunteers.
E.O.C/1199 support.
E.O.C. Monitoring applications.
Communication and public relations. Volunteer Insurance.
Aqua Training and Response equipment repair (e.g. Boats).
Monitoring.
Lessons learned workshop.
Admin Cost 7%.



About Support Services

How many staff and volunteers will be involved in this operation. Briefly describe their role.

The total number of volunteers involved will include 500 pax across the country. The volunteers will be involved in assessment, distribution, and post-monitoring distribution exercises. They will also support data collection verification and validation of the target communities. The 30 staff will also be involved in coordination with stakeholders including the national and county government, as well as other non-governmental partners.

Does your volunteer team reflect the gender, age, and cultural diversity of the people you're helping? What gaps exist in your volunteer team's gender, age, or cultural diversity, and how are you addressing them to ensure inclusive and appropriate support?

Volunteers deployed to provide services to community members have been fully briefed on Safeguarding and Protection from Sexual Exploitation and PSEA principles to ensure awareness and adherence to expected standards of conduct. Additionally, volunteers will be strategically and evenly distributed across the areas of operation to strengthen accountability and minimize the risk of PSEA-related incidents.

Will surge personnel be deployed? If yes, please provide the role profile needed.

Yes

Surge teams from Regional Offices and Headquarters will be deployed to provide technical support to the counties in West Kenya and the Coastal region should the situation escalate beyond the counties' response capacity.

If there is procurement, will it be done by National Society or IFRC?

KRCS team will procure the items as stated in the budget within the project period. These will be to support the replenishment of the already distributed and depleted items. KRCS is able to do emergency procurement since it also has prequalified suppliers who can restock the items as the response needs emerge. KRCS has a functional procurement team and regional/branches warehouses capacity if needed.

How will this operation be monitored?

With the support of the IFRC PMER, the KRCS Monitoring, evaluation, learning, and accountability department will support the DREF operation by providing technical inputs and support on planning, continuous monitoring, assessment results, and information management. They will also support the development and implementation of assessments in this operation. Monitoring reports shall be used to make proper adjustments to the plans and inform ongoing actions.

At the end of the DREF, the MEAL team will lead a joint lesson learned workshop with all stakeholders to document lessons that can be incorporated in future such operations. The lessons learned session will be built on the previous lessons drawn from other responses.

Please briefly explain the National Societies communication strategy for this operation

KRCS public relations and communication department will ensure the media coverage and visibility of the flood operation through press articles during the implementation, photos and video documentaries will be covered. Information related to the operation will also be disseminated through KRCS social media pages, mainstream media, and the organization Website.



Budget Overview



DREF OPERATION

MDRKE070 - Kenya Red Cross Society Floods

Operating Budget

Planned Operations	411 704
Shelter and Basic Household Items	151 961
Livelihoods	103 906
Multi-purpose Cash	0
Health	58 763
Water, Sanitation & Hygiene	70 237
Protection, Gender and Inclusion	9 210
Education	0
Migration	0
Risk Reduction, Climate Adaptation and Recovery	0
Community Engagement and Accountability	17 627
Environmental Sustainability	0
Enabling Approaches	88 273
Coordination and Partnerships	0
Secretariat Services	20 468
National Society Strengthening	67 805
TOTAL BUDGET	499 977

all amounts in Swiss Francs (CHF)



Contact Information

For further information, specifically related to this operation please contact:

National Society contact: Venant Ndighila, HoD Disaster Operations, ndighila.venant@redcross.or.ke, 2547203114882

IFRC Appeal Manager: Naemi Heita, Head of Cluster Delegation, naemi.heita@ifrc.org, +258 863 014 397

IFRC Project Manager: Gemechissa Mustefa, Delegate, Water, Sanitation and Hygiene, gemechissa.mustefa@ifrc.org, +254 757468006

IFRC focal point for the emergency: Patrick Elliott, Roving Operations Manager (Africa), patrick.elliott@ifrc.org, +254 733 620 770

Media Contact: Timothy Maina, Communications Officer, maina.timothy@ifrc.org, 0110848161

National Societies' Integrity Focal Point: Reuben Momanyi, Head of MEA&L, momanyi.reuben@redcross.or.ke, +254 725 918 054

National Society Hotline: 1199

[Click here for the reference](#)

