



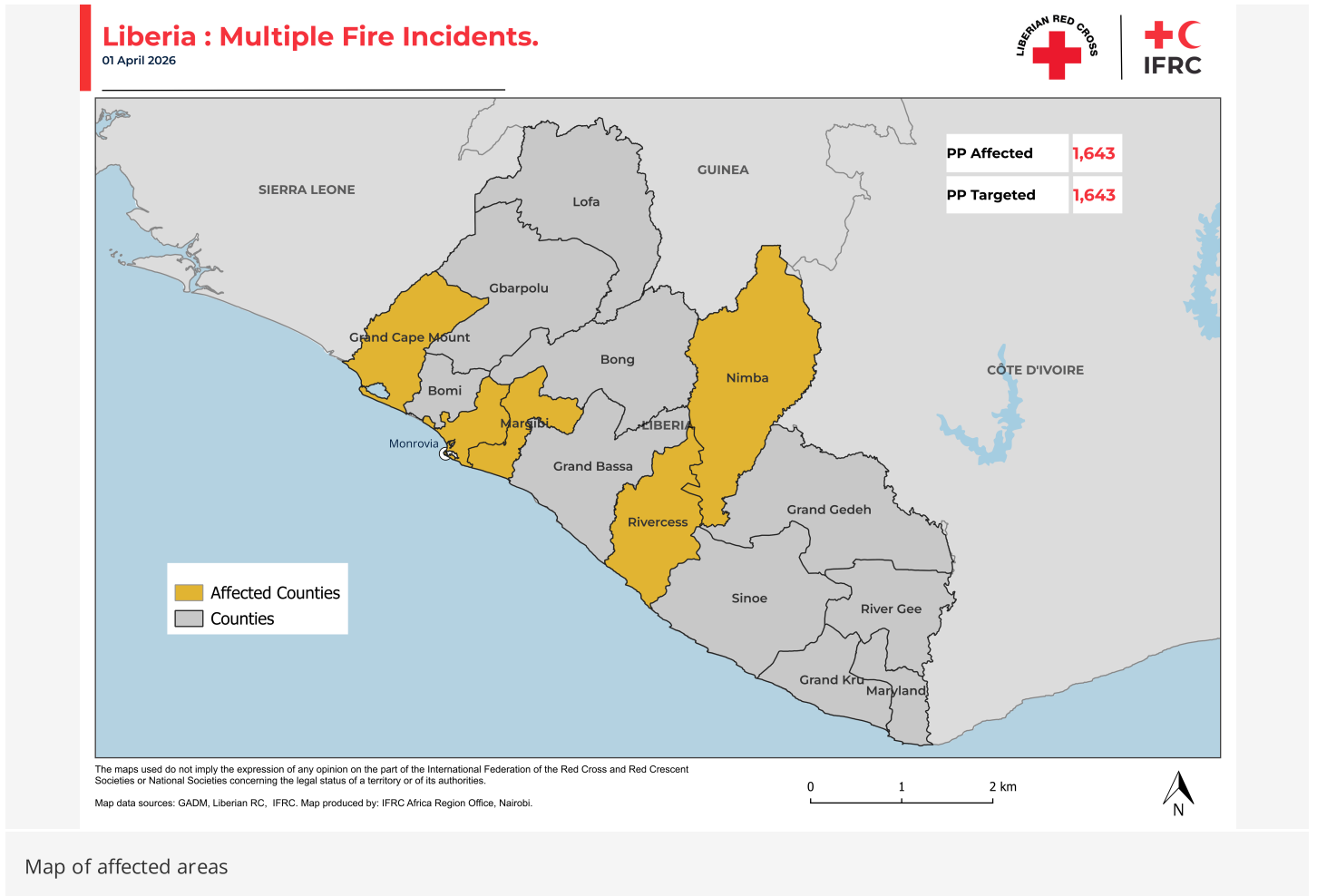
Data collection: Fire – Upper Caldwell, Montserrado County

Appeal: <b>MDRLR011</b>	Hazard: <b>Fire</b>	Country: <b>Liberia</b>	Type of DREF: <b>Response</b>
Crisis Category: <b>Yellow</b>	Event Onset: <b>Sudden</b>	DREF Allocation: <b>CHF 144,766</b>	
Glide Number: <b>-</b>	People Affected: <b>1,643 people</b>	People Targeted: <b>1,643 people</b>	
Operation Start Date: <b>01-04-2026</b>	Operation Timeframe: <b>4 months</b>	Operation End Date: <b>31-08-2026</b>	DREF Published: <b>09-04-2026</b>

Targeted Regions: **Grand Cape Mount, Margibi, Montserrado, Nimba, River Cess**

# Date of event

28-03-2026



## What happened, where and when?

Between 24 and 28 March 2026, Liberia experienced a series of widespread fire outbreaks across five counties: Grand Cape Mount, River Cess, Margibi, Nimba, and Montserrado resulting in severe humanitarian challenges for affected families and communities. In total, 234 households, representing 1643 people, were impacted.

The fires destroyed 61 houses, of which 41 were completely destroyed and 20 were partially damaged. As a result, many families were displaced and lost essential belongings, including clothing, bedding, and cooking utensils.

Beyond the immediate physical destruction, the incidents significantly disrupted livelihoods. Many affected households have been forced to rely on host families and already overstretched community resources. The extent of the damage highlights the vulnerability of local housing structures and underscores the urgent need to strengthen community-level fire prevention and preparedness measures.

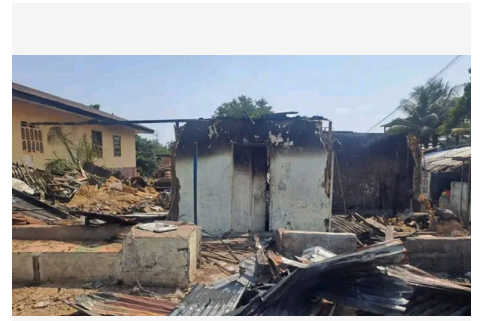




Gbassalor, Cape Mount



Impacted house



Kakata, Margibi County



DESTROYED HOUSES NIMBA COUNTY

## Scope and Scale

The fire outbreaks caused significant humanitarian impacts on affected communities, damaging or destroying homes and household property and affecting 234 households (1643 individuals). Many families lost essential belongings, including clothing, bedding, and cooking utensils, leaving them without basic items needed for daily living. As a result, affected households are currently displaced within their communities, relying on host families or temporary shelter arrangements, often in overcrowded conditions. The loss of homes and assets has disrupted livelihoods, reduced access to safe shelter, and increased the vulnerability of already fragile households.

The impact is particularly severe for vulnerable groups, including women, children, pregnant women, older persons, and persons with disabilities, who face heightened protection and health risks in overcrowded living environments. Limited privacy, inadequate shelter, and the absence of basic household items expose them to health complications, psychosocial distress, and potential exploitation. Many of the affected families live in densely populated communities where housing structures are fragile and constructed from flammable materials, making them highly susceptible to fire hazards.

Beyond the immediate physical damage, the displacement has placed additional pressure on host families and already limited community resources, increasing the overall strain on the affected communities. These incidents also highlight broader systemic challenges, including poor household fire safety practices, fragile housing infrastructure, and limited local emergency response capacity, which increase the likelihood and severity of such disasters.

Fire outbreaks are a recurring hazard in many communities, particularly where households rely on open-fire cooking methods, charcoal stoves, and closely built housing structures. These conditions allow fires to spread rapidly and cause extensive damage when preventive measures and response mechanisms are weak.

Addressing the situation requires immediate humanitarian assistance, including emergency shelter support, non-food items (NFIs), and psychosocial support for affected households. In addition, longer-term resilience and preparedness measures, such as community fire safety awareness, improved housing practices, and strengthened local response capacity, are essential to reduce the risk and impact of future fire incidents.

The Liberia National Red Cross Society (LNRCS) has been actively responding to the fire outbreaks, collaborating closely with local authorities to deliver timely assistance to affected communities.

## Previous Operations

Has a similar event affected the same area(s) in the last 3 years?

No



Did it affect the same population group?	No
Did the National Society respond?	No
Did the National Society request funding form DREF for that event(s)	No
If yes, please specify which operation	-
<b>If you have answered yes to all questions above, justify why the use of DREF for a recurrent event, or how this event should not be considered recurrent:</b>	
-	
<b>Lessons learned:</b>	
<p>Lessons from previous DREF operations have been integrated into the operational plan for this current DREF request. These lessons will guide the response team in implementing activities efficiently and effectively, from planning and implementation through to monitoring, reporting, and accountability, ensuring maximum impact. Some of lessons include:</p> <ul style="list-style-type: none"> <li>• Community-Inclusive Beneficiary Identification: Engage key community stakeholders alongside NS staff and volunteers to ensure affected communities actively participate in identifying and selecting beneficiaries. This approach promotes fairness and strengthens community ownership of the response.</li> <li>• Transparent Beneficiary Validation: Establish clear processes for validating and verifying beneficiary lists from the outset.</li> <li>• Transparent mechanisms ensure fairness, enhance accountability, and reduce the risk of exclusion or duplication.</li> <li>• Ongoing Communication with Local Authorities: Maintain continuous updates with local authorities regarding project activities, including distributions. This prevents misunderstandings, ensures alignment, and supports smooth implementation.</li> <li>• Strengthened Community Engagement and Feedback: Facilitate proper entry into communities through robust Community Engagement and Accountability (CEA) strategies. Enhance community feedback mechanisms to ensure that concerns, suggestions, and complaints are addressed promptly and effectively.</li> <li>• Coordination with Partners: Maintain regular collaboration and information sharing with other humanitarian actors. This helps avoid duplication, leverages complementary capacities, and maximizes the overall effectiveness of the response.</li> </ul>	
Did you complete the Child Safeguarding Risk Analysis in previous operations, what was risk level?	Yes

## Current National Society Actions

### Start date of National Society actions

24-03-2026

<b>Shelter, Housing And Settlements</b>	The NS have been responding with support from the Swedish Red Cross through the Initial Response Fund. USD 11,225 has been allocated to support 58 affected households in the reconstruction of 24 damaged or burnt homes using a combination of locally sourced and externally procured materials (including cement, zinc sheets, and nails), this assistance addresses only a limited share of the overall caseload. Although the intervention is currently underway and has begun to improve basic living conditions for the targeted households, significant unmet needs remain, particularly among affected families who were not included in the initial IRF support. Additional resources are therefore required to ensure equitable coverage and to extend recovery assistance to the remaining households affected by the fire incidents.
<b>Health</b>	The National Society has mobilized 25 volunteers to carry out initial rescue operations, provide first aid, and deliver psychosocial support to affected communities.



<p><b>Coordination</b></p>	<p>The Liberia National Red Cross Society (LNRCS) has been actively responding to the fire outbreaks, collaborating closely with local authorities to deliver timely assistance to affected communities. Through participation in local coordination meetings, LNRCS ensures that response actions are aligned with other humanitarian actors, promoting a well-coordinated and efficient approach.</p> <p>Simultaneously, LNRCS maintains regular communication with the IFRC Freetown Delegation and other Red Cross and Red Crescent Movement partners, providing updates on the evolving situation to facilitate information sharing and joint planning.</p>
<p><b>Assessment</b></p>	<p>With support from the Swedish Red Cross through the Initial Response Fund (IRF), the National Society initiated assessments in Grand Cape Mount, River Cess, Margibi, Nimba, and Montserrado counties. The IRF is currently supporting shelter recovery activities in River Cess, and findings from these initial assessments informed the launch of this DREF operation.</p> <p>The design of this DREF operation is further guided by rapid assessments conducted by the Liberia National Red Cross Society (LNRCS) and discussions held during coordination meetings. These processes identified the priority needs of the affected population, including emergency shelter assistance, food support, essential household items, and early recovery assistance for the most severely affected households.</p>

## IFRC Network Actions Related To The Current Event

<p><b>Secretariat</b></p>	<p>The IFRC has been closely coordinating with the National Society (NS) to provide technical guidance and support throughout the initial assessment and DREF submission process. This includes assistance in completing the DREF template, ensuring alignment with IFRC standards, and offering strategic advice on needs assessment, beneficiary targeting, and planning. The IFRC Freetown Delegation has supported the NS in coordinating with local authorities and other humanitarian actors to harmonize response activities, while also providing remote support to strengthen operational planning and response capacity.</p> <p>The IFRC Freetown Delegation will continue to support the NS during DREF implementation, including PMER guidance for monitoring and reporting, Finance support for budgeting and fund management, Administration and HR assistance, Security guidance for staff and volunteer safety, Logistics support for procurement and relief distribution, and National Society Development (NSD) to enhance operational readiness and community-level preparedness. This coordinated support ensures the NS can implement the DREF operation efficiently while building long-term capacity for future emergency responses.</p>
<p><b>Participating National Societies</b></p>	<p>The Swedish Red Cross is the only Partner National Society (PNS) supporting the Liberia National Red Cross Society (LNRCS) in-country. With support from the Initial Response Fund (IRF) provided by the Swedish Red Cross, the National Society mobilized volunteers to carry out a rapid initial assessment of the affected communities.</p>

## ICRC Actions Related To The Current Event

The International Committee of the Red Cross (ICRC), while not having a direct operational presence in Liberia, provides support through its regional office in Dakar. The situation report on the fire disaster has been shared with ICRC to ensure situational awareness and coordination with broader humanitarian efforts. As of the time of the DREF launch, no formal funding commitments had been made by ICRC for this response.



# Other Actors Actions Related To The Current Event

Government has requested international assistance	Yes
National authorities	The National Disaster Management Agency (NDMA) has called on humanitarian partners to support immediate response and recovery efforts following the fire outbreaks. In response, NDMA has coordinated with local authorities to assess the scale of the impact, facilitate access to affected communities, and mobilize resources to address urgent needs, including emergency shelter, food assistance, and essential household items. The agency continues to provide oversight and guidance to ensure that response and recovery initiatives are aligned with national priorities and coordinated effectively among all actors.
UN or other actors	-

## Needs (Gaps) Identified



### Shelter Housing And Settlements

The recent fire incidents have caused widespread destruction in the affected communities, leaving many families without shelter and essential household items. A rapid assessment revealed 234 households were affected (1643 ppl) of which 41 houses were completely destroyed and 20 were partially damaged. While some families have found temporary accommodation with host families or community members, a significant number remain without adequate shelter.

The loss of essential belongings such as bedding, furniture, cooking utensils, and other household items has compounded the humanitarian needs, highlighting the urgent requirement for both shelter reconstruction and replacement of basic household items. The assessment underscores the following priority areas for response:

- Rebuilding destroyed houses to provide safe and permanent shelter for affected families.
- Replacing essential household items and non-food items (NFIs), including blankets, mats, kitchen kits, and cooking utensils, to restore basic living standards.
- Supporting food security and livelihoods through food assistance and the provision of agricultural inputs.

Immediate interventions are critical to provide shelter, essential household items, and support for the reconstruction of homes and market infrastructure. Coordinated efforts will enable affected communities to recover more quickly and regain stability.



### Livelihoods And Basic Needs

The recent fire incidents, though affected an overall 1,643 people (234 HHS), have severely impacted 176 households (1232 individuals), limiting access to food and disrupting livelihoods. Many families have lost their income sources, reducing their ability to meet basic needs. Host families providing temporary shelter to displaced individuals are also struggling due to their own limited food and resources.

Immediate needs include food, clean water, clothing, blankets, cooking sets, and hygiene supplies to protect health and restore dignity. Multipurpose cash assistance offers a flexible solution, allowing households to prioritize essential needs such as food, medical care, or temporary shelter, while also supporting livelihood recovery through tools, seeds, small livestock, or petty trade. This approach empowers affected families, strengthens resilience, reduces dependency, and accelerates the transition from relief to recovery.

A coordinated response providing food assistance, supporting host families, and promoting livelihood restoration is essential to help affected communities rebuild their lives and achieve sustainable recovery.





## Health

The health situation among fire-affected populations is deteriorating rapidly due to increased vulnerability and inadequate living conditions. Displaced individuals, particularly women and children, are living in open spaces or makeshift shelters without sufficient protection from disease-carrying vectors, especially mosquitoes, raising the risk of malaria and other preventable diseases.

The destruction of homes and farmlands has worsened health and sanitation vulnerabilities. Many displaced families are living in poor sanitation conditions, increasing the risk of water- and vector-borne diseases such as malaria and acute watery diarrhea. The potential spread of cholera further heightens the public health risk.

The National Society has deployed 25 volunteers to provide initial rescue operations, first aid, and psychosocial support. However, continued efforts are needed to address broader health concerns. Immediate interventions include distributing mosquito nets, improving sanitation facilities, and implementing awareness-raising and training programs to reduce disease transmission.

Addressing both urgent health and psychosocial needs is critical to safeguard the well-being of affected populations. Collaboration with local health authorities, community volunteers, and humanitarian partners is essential to deliver inclusive health services, restore dignity, and support early recovery. Providing comprehensive care for physical and mental health will help prevent further complications and promote resilience in the affected communities.



## Water, Sanitation And Hygiene

Key WASH gaps must be urgently addressed to protect displaced families in the affected communities. The lack of safe water storage containers, such as covered gallons and buckets, increases the risk of contamination, while limited access to water purification tablets leaves households vulnerable to waterborne diseases, including cholera and diarrhea.

Maintaining hygiene and sanitation is critical for the well-being and dignity of affected families. Many households have lost essential items for personal and environmental hygiene, while their living environments in temporary shelters and open spaces remain unsafe. Hygiene promotion at the community and shelter level, including proper waste disposal and environmental cleaning, is essential to reduce the risk of disease transmission. Previous assessments indicate that some sanitation-related damage, such as sewage hazards, may become evident weeks after the event and requires ongoing monitoring.

National authorities have called for continuous waste management and triage in affected districts to protect communities from potentially hazardous waste and associated health risks. Coordinated WASH interventions, combined with hygiene promotion and protective measures, are essential to safeguard public health and support the recovery of affected populations.



## Protection, Gender And Inclusion

Significant protection, gender, and inclusion gaps exist, particularly affecting women, children, persons with disabilities, and pregnant women who are living in temporary shelters or with overstretched host families. These conditions increase the risks of exploitation, abuse, and neglect, while limited privacy and inadequate access to essential services undermine dignity and well-being. The absence of coordinated protection mechanisms leaves vulnerable groups exposed to serious safety and human rights concerns.

To address these gaps, the Liberia National Red Cross Society can strengthen community-based protection monitoring, ensure inclusive participation in recovery planning, and integrate PGI considerations across all response activities. These measures will help safeguard vulnerable populations, promote equitable access to assistance, and ensure that recovery efforts are inclusive and protective of all affected community members.



## Risk Reduction, Climate Adaptation And Recovery

The assessment indicates a strong need to reinforce community awareness on fire risks, appropriate response actions, and prevention measures. Communities require regular dissemination of public information and key messages to improve understanding of fire hazards. Strengthened coordination with relevant government institutions is also necessary to ensure that fire risk communication aligns with local authority guidelines and policies.

Findings further highlight the importance of community engagement in disaster risk reduction planning. Communities expressed the need for participatory processes that support locally driven strategies addressing their specific fire-related risks and vulnerabilities. This



includes LNRC community-based volunteers working closely with community committees to integrate local knowledge and traditional practices into wildfire prevention, management, and response messages used in awareness campaigns.



## Community Engagement And Accountability

Many households report limited access to timely and accurate information about available assistance, leaving them uncertain about recovery options. Feedback mechanisms are weak or absent, meaning community voices, especially those of vulnerable groups such as women, children, and persons with disabilities, are not consistently captured or acted upon. In addition, low literacy levels and limited communication channels in the communities hinder effective two-way engagement. The NS can help close these gaps by strengthening localized information-sharing systems, establishing clear feedback and complaint mechanisms, and ensuring inclusive participation in decision-making processes. This will enhance transparency, accountability, and trust, while ensuring that the interventions are responsive to the actual needs of the communities.

Additionally, the engagement of communities in disaster risk reduction planning is crucial. Participatory planning processes should focus on developing community-driven strategies that address specific risks and vulnerabilities. This includes establishing evacuation routes, identifying fire-prone areas, and promoting fire safety measures that reflect the realities and concerns of the communities directly affected by the fires. Without such mechanisms, the response may fail to adapt to the evolving needs of the community, potentially delaying necessary adjustments to the strategy.

## Any identified gaps/limitations in the assessment

The assessment highlighted several operational and resource-related constraints that have limited the scale and timeliness of the response. Key gaps identified include:

The Swedish Red Cross, through its Initial Response Fund (IRF), allocated USD 11,225 to support 58 affected households in reconstructing 24 damaged or burnt homes using local and procured materials. While this assistance is improving basic living conditions, it represents partial support for only 58 of the 234 affected households, leaving 176 households without assistance. Additional resources are therefore required to extend support to the remaining affected families not covered under the initial response.

Need for Complementary and Inclusive Assistance, the assessment underscored the importance of ensuring that complementary support across WaSH, CEA, PGI and DRR, and basic services is extended to all affected households, including those not reached during the initial IRF-supported response.

Difficulties accessing certain affected communities due to poor road conditions and other logistical barriers have delayed the timely delivery of assistance.

Identifying these operational gaps provides a critical opportunity to enhance the overall effectiveness of the humanitarian response. Increased financial and material resources are required to ensure that assistance is delivered in an inclusive, timely, and efficient manner, thereby optimizing the impact of current and future interventions. Addressing these constraints will strengthen operational capacity and contribute to a faster, more sustainable recovery process for the affected populations

# Operational Strategy

## Overall objective of the operation

The operation seeks to provide immediate humanitarian assistance to 1,643 affected individuals (234 households) by addressing urgent basic needs, including food assistance, shelter reconstruction, improved livelihoods, health and hygiene support, and protection risk mitigation. The operation will also implement disaster risk reduction (DRR) measures, including fire prevention awareness, to reduce future risks among the targeted populations affected by fire outbreaks in Gbassalor, Grand Cape Mount, River Cess, Margibi, Nimba, and Montserrado counties. The National Society will aim to implement this objective over a four-month period.

## Operation strategy rationale

In total, the operation will reach 234 affected households (approximately 1,643 people). Of these, 58 households have already received partial support through the Swedish Red Cross Initial Response Fund (SRC IRF). Building on this initial assistance, the DREF operation will prioritize direct cash and in-kind support for the remaining 176 households that have not yet been assisted, while also complementing and reinforcing the support provided to the initial 58 households to ensure equitable and comprehensive coverage of all affected



families.

The intervention ensures that all affected families have access to essential WASH, health, and protection services, while mitigating high risks, including potential fire outbreaks, through strengthened preventive measures and promotion of safe practices across all sectors. Key areas of support include Emergency shelter, Cash assistance, Sanitation and Hygiene promotion, Disaster risk reduction activities, with a strong emphasis on fire prevention awareness. These efforts will be integrated with monitoring, protection, and community engagement strategies to ensure effectiveness, accountability, and sustainability of the response.

#### 1. Shelter Support: Target 61 households (427 People)

The shelter component provides conditional cash assistance of USD 345 per household to 61 households whose homes were damaged or destroyed, following NDMA minimum shelter standards. This cash support enables households to purchase essential construction materials and rebuild safe, durable, and habitable shelters. Items covered include:

- Roofing zinc – 2 sets (14 gauge) – USD 130, Zinc nails – 4 packs – USD 20, 3-inch wire nails – USD 35, Assorted nails – USD 40, 4 Pieces of timber – USD 120
- The distribution of shelter support by county is as follows: Gbassalor – 11 HH, Bethel – 24 HH, Kakata – 7 HH, Jacob Town – 14 HH, Upper Caldwell – 5 HH. This targeted support addresses displacement, restores dignity, and ensures households have secure, permanent shelter. Shelter assistance is coordinated with local authorities, community leaders, and host families to avoid duplication and ensure equitable access for the most vulnerable.

#### 2. Multipurpose Cash Assistance – 176 households (1,232 people)

All affected 176 households will receive a one-time multipurpose cash grant of USD 227.4 to meet basic needs, support food security, and facilitate recovery. Cash allocations are designed to provide maximum flexibility for households to prioritize their needs:

- USD 112.4 for food and nutrition support, covering two months and based on the local expenditure basket (cereals, pulses, vegetable oil, and salt). The calculation uses the February 2026 WFP market price monitoring report for staple food items, along with National Society market price data for essential hygiene items commonly provided by suppliers and partners. Based on this analysis, the average cost of essential food items is estimated at LRD 10,382.5 (USD 56.2) per household per month, totalling LRD 20,765 (USD 112.4) for two months
- USD 65 for essential household items, including bedsheets, blankets, sleeping mats, cooking utensils, laundry bowls, cups, and drinking buckets
- USD 50 for WASH items, including buckets with lids, jerry cans, soap, chlorine, and hygiene kits

Cash distributions will be conducted through an established Financial Service Provider (FSP) to ensure efficiency, transparency, and accountability. Prior to distribution, a market assessment will be conducted to verify availability, price trends, and the feasibility of cash interventions. Following distribution, post-distribution monitoring (PDM) will track utilization, assess household impact, identify any gaps, and inform necessary adjustments. The IFRC Freetown Cluster Delegation will provide technical oversight, including support for market monitoring, operational planning, and reporting, ensuring that interventions meet the objectives of the operation while maintaining quality and accountability standards.

#### 3. Health and WASH: Target 234 households (1,643 people)

Volunteers and branch NDRT members will implement health and hygiene awareness campaigns, reaching all 1,643 individuals in affected households and surrounding communities. Interventions include:

- Hygiene promotion and disease prevention, including handwashing, safe water storage, and environmental cleaning to prevent waterborne and vector-borne diseases
- Safe sanitation practices, addressing gaps in latrines, waste disposal, and hygiene items lost during the fires
- Procurement of safety gear (safety rubber gloves and boots) for volunteers and staff

The WASH response will address immediate gaps in safe water, hygiene kits, and environmental sanitation, reducing risks of cholera, acute watery diarrhea, and other preventable diseases. Continuous monitoring of sanitation hazards, such as sewage contamination, will ensure timely interventions to protect public health.

#### 4. Disaster Risk Reduction: Target 234 households (1,643 people)

The operation will also Strengthening community awareness on fire risks, appropriate actions, and mitigation measures to address critical gaps identified in fire risk awareness, prevention, and community preparedness. To achieve this, the strategy includes enhanced dissemination of public awareness materials and harmonized key messages, developed in coordination with the Liberia Fire Force authority to ensure alignment with local authority guidance and national fire risk reduction priorities. Provide training on fire drill to the community action team on fire hazard, early warning signs and appropriate response actions. This would empower communities to act quickly and effectively during a fire.

#### 5. Community Engagement and Protection, Gender, and Inclusion: Target 234 households (1,643 people)

The operation will apply a Community Engagement and Accountability (CEA) approach, ensuring affected populations, local authorities, and village representatives actively participate in decision-making and recovery planning. A comprehensive gender and diversity analysis will guide interventions across all sectors, ensuring that women, children, persons with disabilities, and other vulnerable groups have



equitable access to assistance. All activities will adhere to IFRC minimum standards for protection, gender, and inclusion (PGI) and PSEA.

This integrated operational strategy aims to meet immediate humanitarian needs, restore dignity, strengthen resilience, and support the recovery of communities affected by the fire outbreaks. By combining cash assistance, shelter, WASH, health, and risk reduction interventions, the operation seeks to empower affected households to rebuild their lives and reduce long-term vulnerabilities

## Targeting Strategy

### Who will be targeted through this operation?

The operation will prioritize the counties most severely affected by the fires; Grand Cape Mount, River Cess, Margibi, Nimba, and Montserrado where incidents have caused extensive damage and humanitarian presence remains limited.

Under this DREF operation, a total of 1232 individuals (176 households) will be targeted for assistance across Shelter, Multi-Purpose Cash (MPC), and WASH interventions. In addition, hygiene promotion campaigns and Community Engagement and Accountability (CEA) activities on fire prevention will be extended to the entire affected population, reaching 1,643 people (234 households).

The beneficiary selection and verification process will prioritize households directly impacted by the fires, including:

- Families who have lost their homes and primary sources of livelihood
- Vulnerable host families providing shelter despite their own limited resources
- Individuals with heightened vulnerabilities, in line with LNRC and IFRC commitments to impartial, needs-based assistance

The Liberia National Red Cross Society (LNRC) will ensure that the selection process is transparent, inclusive, and community driven. Affected communities and key stakeholders will be actively engaged through community meetings, focus group discussions, and consultations. In addition, a continuous feedback mechanism will be established to maintain accountability, promptly address concerns, and allow for timely adjustments to the response.

### Explain the selection criteria for the targeted population

The selection criteria will be developed collaboratively with community stakeholders, ensuring the active engagement of beneficiary representatives and NDMA officials at the district level. Building on its extensive experience from previous DREF operations, the National Society has proposed the following criteria for identifying eligible households:

- Families whose houses were completely burned and are left without shelter.
- Families whose roofs and superstructures were damaged or collapsed, requiring full reconstruction.
- Single-parent households, especially women-headed families, face compounded livelihood and protection challenges.
- Families with persons with disabilities (PWDs), pregnant women, elderly members, and children are at heightened vulnerability.
- Households currently displaced and living in overcrowded temporary shelters or with host families are under strain.

## Total Targeted Population

Women	838	Rural	-
Girls (under 18)	-	Urban	-
Men	805	People with disabilities (estimated)	-
Boys (under 18)	-		
Total targeted population	1,643		



# Risk and Security Considerations (including "management")

Does your National Society have anti-fraud and corruption policy?	Yes
Does your National Society have prevention of sexual exploitation and abuse policy?	Yes
Does your National Society have child protection/child safeguarding policy?	Yes
Does your National Society have whistleblower protection policy?	Yes
Does your National Society have anti-sexual harassment policy?	Yes

**Please analyse and indicate potential risks for this operation, its root causes and mitigation actions.**

Risk	Mitigation action
Insufficient funding to cover urgent shelter, NFIs, and cash assistance needs.	phase interventions to align with available resources.
The unstable nature of the country's economy has the potential to cause inflation and frequent changes in prices that would affect the planned activities.	To address inflation risk, regular market monitoring will be conducted by branches. This will allow real-time updates to keep assistance adequate and know if further engagement is needed with traders and market stakeholders. If inflation is detected through market analysis, the NS will promptly communicate with IFRC for potential budget adjustments to align cash transfers with economic changes. Collaboration with local authorities and financial institutions ensures the timely tracking of economic trends for necessary adjustments.
Limited access to affected communities due to poor road infrastructure and weather conditions.	Strengthen and activate volunteer networks within the affected communities to facilitate timely response efforts and maintain close coordination with community stakeholders to overcome access challenges.

**Please indicate any security and safety concerns for this operation:**

There are operational security and safety risks that must be carefully managed to ensure the effective delivery of assistance. Particularly in the Foya area, ongoing border tensions between Liberia and Guinea, pose potential risks of instability, restricted access, and further population displacement. These tensions could disrupt humanitarian movements and complicate coordination with local authorities.

Additionally, poor road infrastructure, especially during heavy rains, increases the risk of accidents and delays for staff and volunteers. Limited communication networks in remote areas further hinder timely reporting, coordination, and rapid response, requiring contingency planning and adaptive operational measures to maintain safety and service delivery.

Has the child safeguarding risk analysis assessment been completed?	Yes
---	-----



# Planned Intervention



## Shelter Housing And Settlements

**Budget:** CHF 21,442

**Targeted Persons:** 427

### Indicators

Title	Target
# of House owners supported with conditional cash transfer for reconstruction	61
% of households using cash for the purpose it was provided.	90
# of volunteers provided with training on cash to support cash distribution and monitoring	25

### Priority Actions

- Carry out an assessment and monitoring of the market and prices.
- Registration and verification of beneficiaries.
- Training of volunteers in cash to support community engagement.
- Cash transfer to 61 house owners to procure necessary building materials for reconstruction.
- Monitoring by volunteers in the communities to follow up on the use of the cash by beneficiaries.
- Discussions and active sensitization on the assistance through community group discussions, meetings with community stakeholders.
- Post distribution monitoring (PDM).



## Multi Purpose Cash

**Budget:** CHF 37,151

**Targeted Persons:** 1,232

### Indicators

Title	Target
# of HHs supported with multi-purpose cash to cover food and WASH items transfer to support basic needs and food.	176
% of HHs confirming to have received cash and satisfied with distribution process	90
% of HHs using cash for the intended purpose	80

### Priority Actions

- Registration and Verification of Beneficiaries.
- Train 25 volunteers on cash transfer and household registration through the Kobo Collect platform.
- Conduct market assessment.
- Set up targeting committees and a briefing of beneficiary households.
- Conduct a two-day training session on CVA processes for staff and volunteers to support cash distribution.



- Distribute multipurpose cash to 176 households.
- Deploy volunteers to monitor cash transfer activities for 3 days.
- Conduct post-distribution monitoring (PDM) for 3 days.
- Deploy 25 volunteers to sensitize targeted beneficiaries on the details of Mobile money transactions.



**Budget:** CHF 9,753  
**Targeted Persons:** 1,643

### Indicators

Title	Target
# of HHs reached with mosquito nets	176
# of households reached through health promotion and hygiene awareness	1,643

### Priority Actions

- Train 25 volunteers on water, hygiene, and sanitation promotion activities, waterborne disease prevention (including menstrual hygiene, Epidemic Control for Volunteers, and the use of Mosquito nets).
- Transfer of funds to 167 households for support for the purchase of WASH items included in the MPC• Procure and distribute mosquito nets to affected HHs.
- Training of staff and volunteers in first aid, PSS, EPIC, health promotion, CEA, and safeguarding.
- Provide psychosocial support to affected families by volunteers to affected persons for the first month of the operation.
- Deploy volunteers to carry out First Aid and PSS.
- Mobilize 25 volunteers to conduct health prevention awareness with a message on the prevention of water-borne diseases and malaria.



**Budget:** CHF 20,948  
**Targeted Persons:** 1,643

### Indicators

Title	Target
# of Volunteers trained and deployed to support sanitation promotion	25
#of people reached with wash activities	1,643

### Priority Actions

- Train 25 volunteers on water, hygiene and sanitation promotion activities and waterborne disease prevention (including menstrual hygiene, Epidemic Control for Volunteers and the use of MILDAs).
- Conduct an initial assessment of the water, sanitation, and hygiene situation in target communities.
- Continuously monitor the water, sanitation, and hygiene situation in target communities.
- Coordinate with other WASH actors on the target group and the appropriate response to their needs.
- Determine the appropriate method of home/ community water treatment for each community based on efficiency and user preferences.
- Transfer of funds to 176 households for support for the purchase of WASH items included in the MPC.
- Provide training to the population of the target communities on the storage of drinking water, hygiene, and environmental cleaning
- Procurement of cleaning kits to be used by the volunteers for debris cleaning and environmental hygiene, including in the centers.





## Protection, Gender And Inclusion

**Budget:** CHF 2,169

**Targeted Persons:** 1,643

### Indicators

Title	Target
# of volunteers trained and mobilised for PGI promotion	25
% of people reached through PGI awareness sessions for frontline responders	60

### Priority Actions

- Provide orientation to 25 volunteers on PGI including awareness session to communities on PSEA and child safeguarding.
- Establish safe and confidential communication methods and channels for women, girls, and PWDS.
- Sensitization session for other actors working in the shelters.
- Engage in country GBV and PSEA networks to strengthen collaborations and referrals.
- Mapping of safe referral pathways in collaborations with other protection actors and ensuring the referral pathway is shared with relevant staff and volunteers to ensure safe referral.



## Risk Reduction, Climate Adaptation And Recovery

**Budget:** CHF 5,529

**Targeted Persons:** 1,643

### Indicators

Title	Target
# of staff and volunteers provided refresher TOT training on fire drill	25
# of consultation engagement held with community committees	5
# of fire drill training sessions conducted for Community Action Teams.	5

### Priority Actions

- Provide refresher TOT for LNRC staff and volunteers on Fire drill.
- Conduct regular awareness campaigns and educational programmes about fire hazards, early warning signs, and appropriate response actions.
- Provide training on fire drill to the community action team on fire hazards, early warning signs and appropriate response actions.
- Consultation engagement with community committees to Incorporate local knowledge and practices related to the prevention of wildfire management and response.



## Community Engagement And Accountability

**Budget:** CHF 4,211

**Targeted Persons:** 1,643



## Indicators

Title	Target
# of volunteers trained In CEA and PGI	25
% of operation complaints and feedback received and responded to by the NS	80
# of people reached with fire prevention messages	1,643
% of community members who feel the aid provided by the operation currently covers their most important needs	90

## Priority Actions

- Train volunteers on CEA and PGI to support operations' activities. Involvement can enhance accountability and ensure that actions are aligned with community needs and priorities.
- Organize a community meeting to validate the targeting criteria and the lists of beneficiaries.
- Engage a broad spectrum of community members, including marginalized and vulnerable groups, to ensure diverse perspectives and needs are addressed.
- Incorporate local knowledge and practices related to the prevention of wildfire management and response.
- Establish clear and continuous two-way communication channels between authorities and the community.
- Use multiple platforms (e.g., community meetings, social media, radio, etc.) to disseminate information and updates.
- Setting up Community Feedback Mechanisms for receiving and addressing community feedback, complaints, and suggestions, which should be used to amend early actions to be more effective.
- Ensure transparency in decision-making processes and the allocation of resources. Keep the community informed about how decisions are made and how resources are distributed.
- Undertake communication work to ensure media coverage of the volunteers' activities.



## Secretariat Services

**Budget:** CHF 12,386

**Targeted Persons:** 1,643

## Indicators

Title	Target
# of technical support missions conducted by IFRC	3
# of NS staff provided training on the New DREF Evolution, quality DREF application and reporting	30

## Priority Actions

- IFRC technical support mission and monitoring visits.
- Participation in coordination meetings.
- Volunteers insurance.
- Provide training for NS HQ and branches on the New DREF Evolution, quality DREF application and reporting.



## National Society Strengthening

**Budget:** CHF 31,176



## Indicators

Title	Target
# of monitoring visits conducted by NS	6
# of lesson learned workshop conducted	1

## Priority Actions

- Ensure coordination and public relations.
- Programme Monitoring conducted by the NS team.
- Organize a lessons learned workshop.
- Ensure compliance with reporting and accompany the process.
- Program Monitoring by the NS team.

# About Support Services

## How many staff and volunteers will be involved in this operation. Briefly describe their role.

A total of 25 volunteers will be trained and deployed across the five counties of operation to support the implementation of the DREF activities. These volunteers will participate in community engagement and awareness-raising, assessments, distribution activities, and post-distribution monitoring. They will also support data collection, verification, and validation processes within the targeted communities to ensure accurate beneficiary identification and effective program delivery.

In addition, five staff members will support the overall implementation and coordination of the DREF operation. Their responsibilities will include operational oversight, coordination with local and national authorities, and engagement with other humanitarian and non-governmental partners to ensure effective collaboration and alignment of response efforts.

## Does your volunteer team reflect the gender, age, and cultural diversity of the people you're helping? What gaps exist in your volunteer team's gender, age, or cultural diversity, and how are you addressing them to ensure inclusive and appropriate support?

Yes

## If there is procurement, will it be done by National Society or IFRC?

The operation will include limited procurement of essential items, such as mosquito nets and information, education, and communication (IEC) materials. Procurement will be managed by the LNRCs National Headquarters in Monrovia, with technical oversight and monitoring provided by the IFRC Freetown Cluster Delegation to ensure compliance with established procurement policies, standards, and procedures.

## How will this operation be monitored?

The monitoring of this operation will be structured, multi-layered, and performance-driven, ensuring strong accountability, transparency, and continuous learning throughout implementation. The Liberia National Red Cross Society (LNRCs) operations team and leadership will oversee all aspects of operational delivery, including implementation, monitoring, evaluation, and reporting. They will work in close collaboration with the IFRC Country Cluster Delegation (CCD) in Freetown to maintain a performance-based management



approach that ensures the quality, effectiveness, and compliance of the response.

At the operational level, the LNRCS Planning, Monitoring, Evaluation, and Reporting (PMER) framework will guide monitoring activities through the use of standardized tools and schedules for tracking key performance indicators. The local chapters in Grand Cape Mount, River Cess, Margibi, Nimba, and Montserrado Counties will conduct routine field monitoring, tracking shelter reconstruction progress, distribution of assistance, cash transfers, and Protection, Gender and Inclusion (PGI) activities. Volunteers and staff will collect field data and community feedback to ensure that interventions remain responsive to evolving needs. Weekly operational updates will be compiled by field teams and consolidated at headquarters, allowing supervisors to maintain oversight and support timely, evidence-based decision-making.

To further strengthen monitoring and technical support, the IFRC Country Cluster Delegation will conduct four planned technical support and monitoring missions during the implementation of the DREF operation. The first mission, led by the IFRC PMER focal point at the early stage of the response, will support the LNRCS team in developing a detailed operational workplan, establishing response tracking and monitoring tools, support PGI assessment, and providing a refresher session for the PMER and DREF team to strengthen monitoring and reporting capacity. The second mission will be conducted by the operations focal point, who will support the LNRCS in finalizing the distribution plan and will participate in the cash distribution process to ensure operational standards, transparency, and accountability are upheld.

Additional technical oversight missions will be conducted by the Head of Delegation and IFRC Finance team during the course of implementation. These visits will focus on partnership and humanitarian diplomacy, quality assurance, financial oversight, and risk management, ensuring compliance with IFRC financial procedures and strengthening operational accountability.

Throughout the operation, monthly progress reports will be shared with IFRC and LNRCS management to maintain transparency and donor confidence. Key data trends, including beneficiary reach, community feedback, and recovery progress, will be regularly reviewed to adjust strategies, address operational gaps, and enhance the overall effectiveness of the response.

At the end of the operation, the IFRC Country Cluster Delegation will support LNRCS in facilitating a lessons learned workshop involving staff, volunteers, and community representatives. This session will capture best practices, identify challenges, and generate learning that will inform future emergency responses while strengthening the National Society's preparedness and response capacity.

## Please briefly explain the National Societies communication strategy for this operation

The National Society's communication strategy for this operation aims to promote transparency, accountability, and strong community engagement throughout the response.

At the community level, the chapters in Nimba and Lofa will engage trained volunteers to share accurate information with affected households, collect feedback, and address misinformation. Regular coordination between chapter offices and LNRCS headquarters will ensure consistent messaging and alignment with operational priorities.

Communication will also be supported through PMER-linked reporting, with weekly data updates and periodic reports shared with IFRC and LNRCS management to maintain accountability to partners and donors. In addition, media and public outreach, including press releases, radio programs, and community meetings, will highlight operational progress, challenges, and key achievements to ensure visibility of the response.

A close-of-operation learning workshop will be organized to document and share lessons learned internally and with partners, strengthening future responses. Communication activities will integrate Protection, Gender, and Inclusion (PGI) and Community Engagement and Accountability (CEA) principles, ensuring channels are inclusive, accessible to persons with disabilities and low-literacy households, and supported by safe and responsive feedback mechanisms.



# Budget Overview



## DREF OPERATION

### MDRLR011 - Liberia National Red Cross Multiple Fire Outbreaks

#### Operating Budget

<b>Planned Operations</b>	<b>101,204</b>
Shelter and Basic Household Items	21,442
Livelihoods	0
Multi-purpose Cash	37,151
Health	9,753
Water, Sanitation & Hygiene	20,948
Protection, Gender and Inclusion	2,169
Education	0
Migration	0
Risk Reduction, Climate Adaptation and Recovery	5,529
Community Engagement and Accountability	4,211
Environmental Sustainability	0
<b>Enabling Approaches</b>	<b>43,562</b>
Coordination and Partnerships	0
Secretariat Services	12,386
National Society Strengthening	31,176
<b>TOTAL BUDGET</b>	<b>144,766</b>

*all amounts in Swiss Francs (CHF)*



# Contact Information

For further information, specifically related to this operation please contact:

**National Society contact:**

Christopher O. Johnson, Head of Programs & Operations, christopher.johnson@liberian-redcross.org, +23177026210

**IFRC Appeal Manager:** Peter Ophoff, Head of Delegation, peter.ophoff@ifrc.org

**IFRC Project Manager:** John Kenous Gbao, Senior Operations Officer, john.gbao@ifrc.org, 079102910

**IFRC focal point for the emergency:** John Kenous Gbao, Head of Programs & Operations, john.gbao@ifrc.org, +23177026210

**Media Contact:** Alhaji Bockarie Abu, Senior PMER Officer, Alhaji.ABU@ifrc.org

[Click here for the reference](#)

