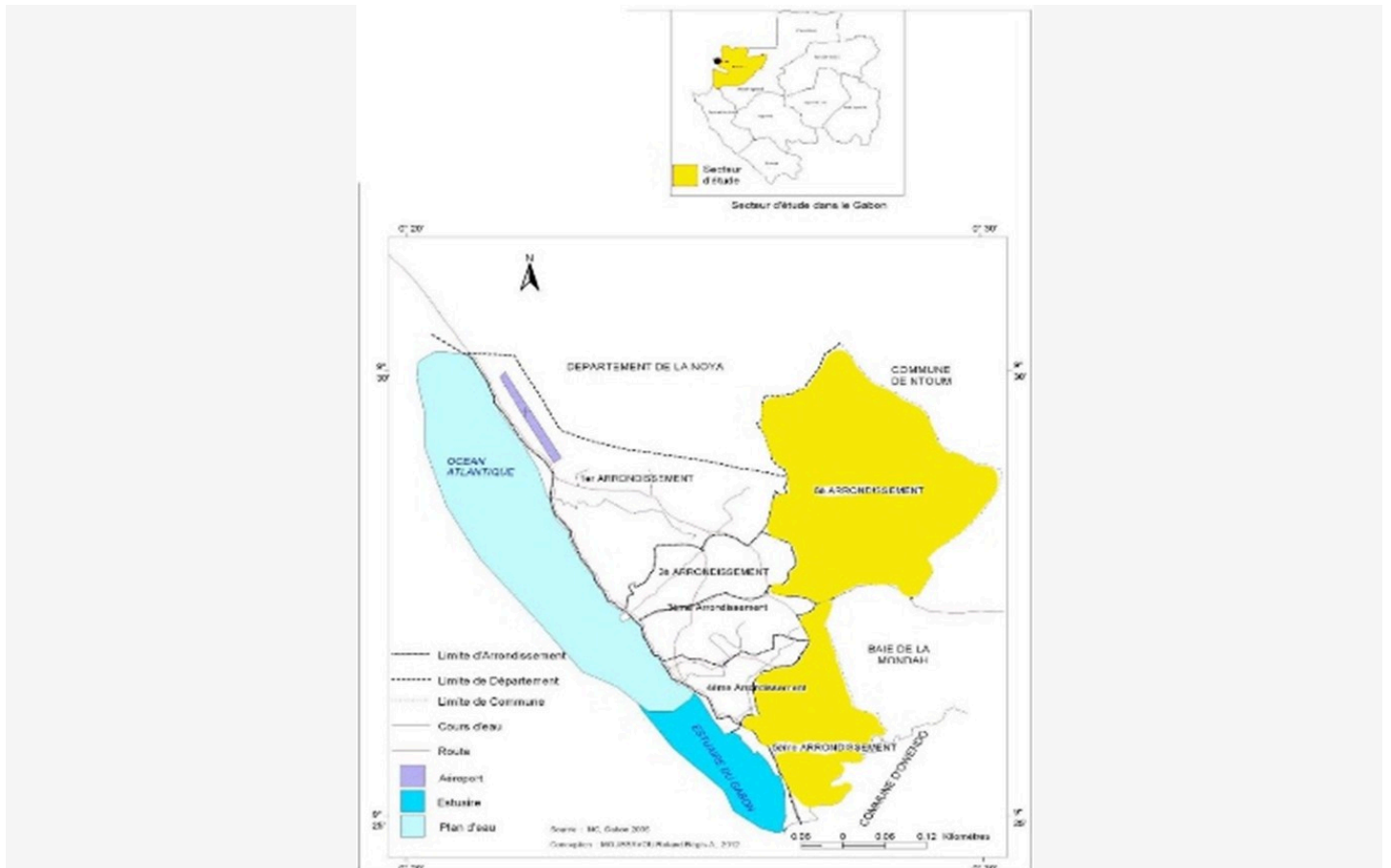




Impacts of strong winds in Franceville

Appeal: MDRGA015	Total DREF Allocation: CHF 472,841	Crisis Category: Yellow	Hazard: Storm Surge
Glide Number: -	People Affected: 6,155 people	People Targeted: 3,650 people	
Event Onset: Sudden	Operation Start Date: 22-12-2025	New Operational End Date: 30-06-2026	Total Operating Timeframe: 6 months
Reporting Timeframe Start Date: 22-12-2025		Reporting Timeframe End Date: 18-03-2026	
Additional Allocation Requested: 190,653		Targeted Regions: Estuaire, Haut-Ogooue, Ngounie	

Description of the Event



Map of affected provinces. Source Gabonese Red Cross

Date of event

08-03-2026

What happened, where and when?

On the afternoon of 8 March 2026, torrential rains accompanied by strong winds struck the localities of Franceville, Moanda, and SUCAF in Haut-Ogooué Province, causing significant material damage, particularly in the 3rd and 4th districts of Franceville. Rainfall has continued in these areas, raising concerns that the situation may further deteriorate.

Damage reported so far includes the partial or complete destruction of roofs on houses and public buildings, fallen trees blocking houses and public roads, and the loss of household belongings such as furniture, clothing, mattresses, and school supplies. Some schools have also reported the loss of educational equipment. These impacts have created an urgent humanitarian situation for several hundred families. According to a preliminary report from the committee dated 15 March, approximately 331 households (1,655 people) have been affected by the storms, while rapid assessments are still ongoing in other impacted areas.

With the inclusion of Franceville, the target population for assistance now rises to a cumulative total of 730 households, including 300 in Libreville, 150 in Mouila, and 280 in Franceville, representing approximately 3,650 people targeted for humanitarian assistance. Across these areas, torrential rains and violent winds have caused extensive damage to housing, public infrastructure, and essential services, while also displacing several households.

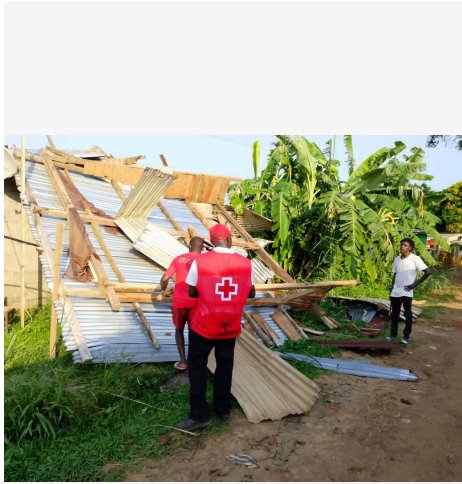
Earlier, on 23 January 2026, Mouila (Ngounié Province) experienced heavy rainfall and strong winds that affected more than 1,500 people, including approximately 150 households whose roofs were damaged or destroyed and who lost household belongings and school materials. Volunteers and neighborhood leaders are currently registering affected populations and supporting communities, while the official response from authorities is still pending. The planned intervention will prioritize 450 of the most severely affected individuals, representing the most vulnerable households.

Prior to this, in Libreville (Estuaire Province, 5th and 6th districts), severe storms during the night of 15–16 December 2025 caused widespread destruction. More than 300 houses, a school, several businesses, administrative buildings, utility poles, and the maternity ward of the Estuaire Regional Hospital were partially or completely destroyed. Approximately 3,000 people (600 households) were affected. Some families are currently sheltering outdoors under makeshift structures, while others have sought refuge with relatives or neighbors.

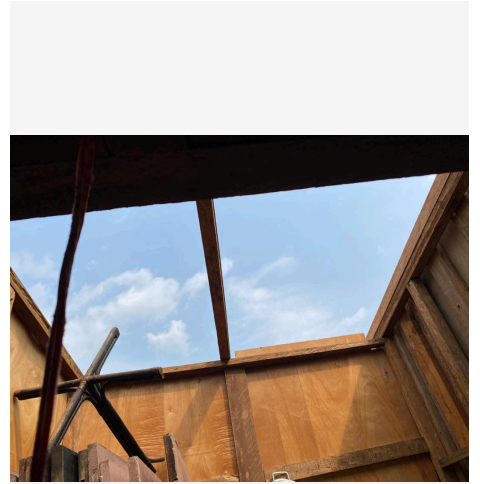
In this context, timely humanitarian assistance is critical to address immediate shelter and essential household needs, restore a minimum level of dignity and safety for affected families, and prevent further deterioration of living conditions. The planned response targeting the most vulnerable households will help stabilize affected communities while complementing ongoing assessments and potential longer-term recovery efforts.



Multisectoral field assessment by Volunteers after the disaster in Mouila



Field visit by the Gabonese Red Cross team



A household with the roof destroyed in Franceville



Registration of affected household in Franceville

Scope and Scale

Between 15 and 16 December 2025, Grand Libreville (Estuaire Province) experienced torrential rains accompanied by strong winds, lightning, and thunder, which caused widespread destruction. Approximately 600 households and several public and private infrastructures, including schools, shops, administrative buildings, and electricity poles, were damaged. Initial assessments indicate that 300 households (around 1,500 people) are among the most vulnerable and in need of priority assistance.

On 23 January 2026, a second weather event struck Mouila (Ngounié Province), affecting more than 1,500 people, with 150 of the most vulnerable households (around 750 people) prioritized for immediate support. The damages recorded include partial or complete roof destruction, fallen trees, and loss of household belongings and school materials.

The hazard has significantly affected lives, livelihoods, well-being, and infrastructure. Households face physical risks from collapsing

roofs, falling trees, debris, and damaged electricity poles, increasing exposure to waterborne diseases and psychological stress. Livelihoods have also been disrupted due to the loss of household goods, work tools, and small business stocks, particularly for families dependent on petty trade and informal labor. Infrastructure damage includes nearly 300 homes, blocked roads, and damaged public and private buildings, which has further constrained mobility and response efforts.

The most vulnerable populations include children, elderly persons, people with disabilities, female-headed households, and low-income families, particularly in flood- and wind-prone neighborhoods of Libreville and densely populated settlements in Mouila. Many of these households had already been affected by previous floods, reducing their coping capacity. Historically, Libreville is more frequently affected by floods than windstorms, while Franceville experienced its last major wind event in 2022. The current crisis is therefore unusual due to its early occurrence during the small rainy season, its concentrated impact, and the pressure placed on local response capacities.

The current situation affecting Haut-Ogooué Province is occurring at a time when the country is experiencing widespread impacts of climate related extreme events across several provinces, including Estuaire, Ngounié, Haut-Ogooué, Ogooué-Maritime, Nyanga, and Ogooué-Lolo. The impact, however, remains particularly significant in the provinces targeted by the DREF intervention, where more than 450 households have already been affected in Estuaire and Ngounié Provinces, and over 331 households in the Franceville area following the most recent crisis. The heavy rainfall of 8 March, which continues in some areas, is further increasing the vulnerability of populations whose living conditions are already fragile.

Among the most exposed groups are children under five years of age (more than 550), pregnant and lactating women (around 23), elderly persons (over 77), and people living with disabilities (27). The most critical risks relate to limited access to safe drinking water, inadequate sanitation infrastructure, reduced access to basic health services, insufficient coverage of essential needs such as food, bedding materials, household utensils, healthcare, and shelter, as well as the need to improve menstrual hygiene management.

The National Society is also facing operational challenges, including mobility constraints due to a broken vehicle and a shortage of volunteers trained in first aid and cross-cutting thematic areas. These challenges are linked to high volunteer turnover, insufficient regular refresher training, and a lack of local trainers, a situation that affects several provincial committees. The limited number of trainers at the national level further constrains the continuous capacity strengthening of volunteers. In response, the National Society intends to train new trainers to strengthen its intervention capacity and improve preparedness for future crises.

Source Information

Source Name	Source Link
1. Facebook Post for Mouila disaster	https://www.facebook.com/photo?fbid=1636507491051668&set=pcb.1636508167718267&locale=fr_FR
2. Facebook Post	https://www.facebook.com/watch/?v=830032843159102
3. Gabon Television Group, the leading national channel	https://www.youtube.com/watch?v=SqSEPnwk7Yw

Summary of Changes

Are you changing the timeframe of the operation	Yes
Are you changing the operational strategy	No
Are you changing the target population of the operation	Yes
Are you changing the geographical location	No
Are you making changes to the budget	Yes
Are you requesting an additional allocation?	Yes



Please explain the summary of changes and justification:

Following a new windstorm event on 8 March 2026, the cities of Franceville, Moanda and SUCAF were severely affected, impacting 331 households (1,655 people). This update seeks to support the newly affected populations through a scale-up of the ongoing operation.

Main changes:

- Geographical expansion to Haut-Ogooué Province, in addition to Libreville (Estuaire) and Mouila (Ngounié).
- Increase in target caseload from 450 to 730 households (300 Libreville, 150 Mouila, 280 Franceville).
- Additional funding request of CHF 190,653, bringing the total allocation to CHF 472,841.
- Extension of the operational timeframe from 4 to 6 months, until 30 June 2026.
- Scale-up of cash assistance, WASH, health and PGI activities, including distribution of hygiene kits, mosquito nets and 322 dignity kits.
- Strengthening of operational capacity, including recruitment of volunteers, repair of the provincial vehicle and provision of data collection tools.
- Enhanced coordination with authorities and partners, including engagement with local authorities and support from ICRC for Training of Trainers.

IFRC Network Actions Related To The Current Event

Secretariat	<p>The IFRC Yaoundé Cluster Delegation is supporting the National Society in the preparation of the DREF update and the monitoring of the operation. While there is no permanent IFRC presence in Gabon, the cluster provides strategic, technical, and surge support to ensure effective implementation of the response. A CVA Officer has been deployed to the field to support ongoing assessments, and a surge staff member has been deployed to strengthen operational and coordination capacity. Secretariat support also covers PMER, Finance, Administration, Human Resources, Security, Logistics, and National Society Development (NSD), ensuring quality implementation, accountability, and operational oversight.</p> <p>The surge staff deployed by IFRC is currently supporting the National Society in updating the present DREF extension request and will remain for an additional month to continue providing operational support, while the Yaoundé Cluster Delegation continues to closely monitor the evolution of the situation and provide strategic guidance on the next steps of the operation.</p>
Participating National Societies	No PNS is present in Gabon.

ICRC Actions Related To The Current Event

The ICRC delegation based in Yaoundé, Cameroon, which also covers Gabon, was informed about the DREF operation. Tripartite discussions were initiated between the Gabonese Red Cross, the IFRC Cluster Delegation in Yaoundé, and the ICRC to enhance coordination and explore potential areas of support. The ICRC has expressed its readiness to support the National Society based on identified needs, with potential assistance envisaged in Training of Trainers to strengthen the National Society's operational and preparedness capacities.



Other Actors Actions Related To The Current Event

Government has requested international assistance	No
National authorities	<p>Municipal authorities in Estuaire Province conducted field visits to assess the situation. However, no official communication had been issued by the Government at the time of reporting. In Mouila, the administration, through neighborhood leaders, was also deployed on the field to identify affected households. Nevertheless, an official response from the authorities was still pending.</p> <p>In Franceville, neighborhood chiefs and other community leaders stood alongside the affected communities and conducted field visits to encourage community solidarity and mutual support. Administrative and municipal authorities also expressed their interest in exchanging information collected by the Gabonese Red Cross to better identify priority areas for their interventions.</p>
UN or other actors	No action has yet been recorded on the part of the United Nations system and other actors.

Needs (Gaps) Identified



Shelter Housing And Settlements

According to data collected by the Red Cross branches as of 18 December, approximately 300 houses were damaged by strong winds in the 5th and 6th districts of Libreville. The damage included partially or totally torn roofs, fallen trees, destroyed plank houses, and collapsed walls, which rendered many homes uninhabitable or unsafe. Household items were also damaged or destroyed, leaving numerous families without shelter and dependent on relatives or neighbors for accommodation.

In Mouila, 150 vulnerable households were registered with the support of neighborhood leaders following heavy rainfall accompanied by strong winds that struck the town on Friday, 23 January 2026 at around 7:00 p.m. From the morning of Saturday, 24 January, volunteers conducted door-to-door visits across affected neighborhoods to register and support impacted families. It was estimated that more than 1,500 people were affected by the event, and the response therefore prioritized the 750 most severely impacted individuals, representing over 150 of the most vulnerable households.

The structural damage observed included partially or totally torn roofs, fallen trees, destroyed plank houses, and collapsed walls, which made many homes unsafe for reoccupation. Debris also damaged household assets, and with limited alternatives, many households remained without shelter while others were hosted by family members or neighbors.

The Franceville crisis and surrounding areas had an estimated impact of 331 affected households, representing approximately 1,655 people. The main needs identified in terms of essential household items (NFI) included bedding materials, kitchen utensils, tents for temporary shelter, and dignity kits.



Health

Stagnant water and debris from destroyed roofs are creating breeding grounds for mosquitoes, increasing the risk of malaria, as well as conditions conducive to diarrheal and waterborne diseases from damaged wells or open water sources. Debris and damaged infrastructure also pose physical injury risks (cuts from metal sheets, nails). Immediate awareness-raising on mosquito nets, safe water, and hygiene practices is crucial to prevent health risks. Coordination with local authorities continues, while the response from Ngounié authorities is still pending.

Affected families are experiencing both material loss and trauma, which must be addressed alongside material assistance.





Water, Sanitation And Hygiene

The rains were violent and rapid, washing away roads, waste, and community structures. According to information received from the Red Cross provincial committee, several wastewater drainage channels were destroyed, creating a high-risk environment for households, particularly children, people with reduced mobility, older persons, and other vulnerable groups. In addition, rainwater pools formed due to obstructed runoff caused by accumulated debris, which limited environmental hygiene conditions and created favorable breeding grounds for disease vectors.

Several households that sought refuge with host families also require support to maintain adequate household hygiene, which was essential for the prevention of water-related diseases and other hygiene related health risks.

The heavy rainfall and strong winds also increase the risk of contamination of main drinking water sources. The presence of debris hindered the normal flow of water, leading to the stagnation of water pools and increasing the risk of diseases associated with poor hygiene conditions. The implementation strategy and planned activities in Haut-Ogooué Province remained the same as those implemented in Libreville and Mouila.



Protection, Gender And Inclusion

As a result of the strong winds and displacement, affected populations faced increased protection risks, including sexual and gender-based violence in overcrowded or poorly lit shelters, risks of kidnapping or mistreatment in communal spaces with limited privacy, and the loss of essential documents. Vulnerable groups such as children, older persons, people with disabilities, and female-headed households were particularly exposed to difficulties in accessing information, resources, and humanitarian assistance. Protection, Gender, and Inclusion (PGI) measures were therefore integrated across all response activities to promote equitable access to assistance, safety, and dignity for all affected populations.

The intervention prioritized the most vulnerable groups within the affected population, including pregnant and lactating women and people living with disabilities, while also addressing the hygiene needs of women of reproductive age. In this context, the distribution of dignity kits (including body cream, sanitary pads, soap, toilet paper, and other essential hygiene items) was identified as a key response measure. A total of 322 dignity kits were planned for distribution, including 200 kits in Franceville and 122 kits in Mouila.



Risk Reduction, Climate Adaptation And Recovery

The recent strong winds highlighted significant gaps in disaster risk reduction at the community level. Communities lacked adequate knowledge on how to prepare for, respond to, and recover from high wind events. In addition, no safe shelters, roof or environmental protection measures, or neighborhood evacuation plans were in place.

The response activities therefore included awareness-raising, community-based preparedness initiatives, and support for early warning dissemination and shelter safety measures to strengthen community resilience to future wind-related hazards.



Community Engagement And Accountability

The strong winds disrupted critical infrastructure, including electricity supply, and created gaps in access to reliable information, which increased the risk of rumours and misinformation within affected communities. It was therefore considered essential to engage communities through local leaders and volunteers, ensuring that timely information on response activities and weather forecasts was shared. A feedback mechanism was also established to collect community concerns and ensure accountability, enabling the National Society to adapt interventions according to the needs and priorities expressed by affected populations.

The implementation strategy and planned activities in Haut-Ogooué Province remain the same as those implemented in Libreville and Mouila. Community leaders participated in the identification of beneficiaries and in the validation of the final beneficiary lists to ensure transparency and community ownership of the process.

Any identified gaps/limitations in the assessment

During the assessment, 434 households were registered in Libreville and Mouila, but only 300 households were prioritized for support, leaving a gap of 134 vulnerable households whose needs remained unmet. Significant unmet needs were identified in the shelter, WASH,



and health sectors, particularly among households with destroyed roofs, damaged water points, or limited access to healthcare services. Resource constraints including shortages of shelter materials, hygiene kits, household items, funding, and personnel limited the capacity to respond to all affected populations. Operational challenges such as debris accumulation, damaged roads, heavy rainfall, and limited digital literacy among volunteers further constrained comprehensive data collection, monitoring, and assistance delivery.

Coordination challenges were also observed, including limited engagement by local authorities in Ngounié Province and the absence of interventions by UN agencies or other humanitarian actors, which affected overall response coverage and support. Vulnerable groups potentially underrepresented in the assessment included children, older persons, people with disabilities, female-headed households, and displaced families, particularly in relation to protection concerns, mobility, and access to information. Continued monitoring and follow-up assessments were therefore considered necessary to address these gaps and ensure that all affected households received timely and appropriate assistance.

The impact of the disaster was more pronounced in precarious settlements, where construction materials were often of poor quality, further increasing the vulnerability of affected populations. Support with tarpaulins was therefore identified as necessary to protect household belongings, while assessments continued the ground as the rainy season approached its peak in the targeted areas. The Haut-Ogooué provincial committee had a vehicle, but it was not operational due to repeated mechanical breakdowns, highlighting the need to strengthen operational capacity and human resources, particularly volunteers. Close coordination with local authorities was maintained to ensure joint or complementary interventions.

To improve the implementation of activities, the operation included several key actions. A multi-sectoral assessment was planned to confirm the needs of affected populations and assess the functioning of local markets. Cash assistance was planned for 280 households, with each household receiving 192,000 FCFA, and each beneficiary household receiving three mosquito nets, totaling 880 mosquito nets for the intervention. In addition, 280 cleaning kits were planned for distribution, along with 322 dignity kits for women of reproductive age, including 200 kits for Franceville and 122 kits for Mouila. Community waste collection and sorting activities were planned through the provision of garbage bags, while four sanitation campaigns were scheduled in six neighborhoods of Franceville over a three-month period. The intervention also included the procurement of 10 sanitation kits to support the activities of the provincial committee and monthly community awareness sessions on household waste management and waterborne diseases over three months.

To address psychosocial needs, a psychologist was planned to be deployed for 14 days to provide psychological support to affected individuals. The committee was also provided with five integrated image boxes and communication leaflets to support community awareness activities. A DREF launch event in Franceville was organized to engage authorities, followed by distribution ceremonies involving administrative officials and community leaders. Twenty-two volunteers in Franceville participated in a three-day integrated briefing, and logistical arrangements were made for the transport of relief materials to Franceville. Community engagement activities also included monthly awareness sessions on safe construction practices and evacuation for two months, and monthly facilitated group discussions with communities over three months, with refreshments provided to participants.

To support monitoring and accountability, communication credit was provided to five volunteers responsible for online data collection every two weeks over a three-month period, along with community discussions with local representatives and the printing of data collection forms to capture community feedback. Operational support also included a one-month salary contribution for the Provincial Secretary, repair of the Franceville vehicle, fuel provision for three months, and visibility materials such as vests, T-shirts, and caps. Additionally, five mobile phones were provided to facilitate rapid field data collection.

During the events experienced during past rainy seasons and even at the onset of the current crisis, it has been noted that the branches face difficulties in relaying relevant information in a timely manner. This deficit is due to the fact that most volunteers have been newly recruited within the NS and therefore do not have the necessary reflexes for monitoring, rapid needs assessment, and even providing support to affected populations. Despite the NS's efforts to encourage volunteer training, the number of trainers remains very insufficient approximately 10 active trainers across the entire country. The NS wishes to strengthen preparedness and response capacity. 20 trainers in first aid from Estuaire, Ngounié, and Haut-Ogooué are planned to be trained. This training addressed the shortage of qualified first aid trainers and other cross-cutting thematic trainers, which had been identified as a constraint in strengthening volunteer capacities. The training is aligned with the 2026–2027 national action plan of the Gabonese Red Cross, which emphasized the need to reinforce the capacity of field teams. The training of trainers aimed to increase the number of certified trainers and expand the number of Red Cross volunteer first responders, in line with the "Famille Plus" programme, which focused on three phases: volunteer enrolment, training, and the establishment of Red Cross brigades. The International Committee of the Red Cross planned to provide financial and technical support for this training activity, with the objective of also involving volunteers from localities not covered by the present DREF operation.

Operational Strategy

Overall objective of the operation

The operation aims to provide direct assistance to 730 households (3,650 people) affected by windstorms in Libreville (300 households), Mouila (150 households), and Franceville (280 households). Support will be delivered through multipurpose unconditional cash transfers to address priority needs identified through multi-sectoral assessments, including shelter, essential household items, food, WASH, and



health.

Following intensified winds and increased rainfall across the country, the National Society has requested a scale-up of the ongoing DREF operation, including an increased budget and expanded caseload to cover the newly affected population.

In addition, the operational timeframe is proposed to be extended from four to six months, allowing sufficient time to implement activities in Franceville and ensure effective delivery across all targeted areas.

Operation strategy rationale

This operation is designed to address the immediate needs of 730 households (3,650 people) affected by windstorms in Libreville (300 households), Mouila (150 households), and Franceville (280 households). The primary objective is to restore dignity, reduce health risks, and support households whose homes and livelihoods had been partially or destroyed.

The cash modality was selected as the main intervention to provide families with the flexibility to cover their priority needs, including shelter, essential household items, food, and health-related expenses. This approach enabled beneficiaries to prioritize their most urgent needs while preserving their dignity and autonomy. The amount allocated (XAF 192,000 per household) was based on previous DREF experiences and prevailing market prices. During the Rapid Market Assessment (RAM) conducted in Libreville, markets were confirmed to remain functional with traders maintaining sufficient supply capacity. In Mouila, markets were also functioning, although minor seasonal supply chain constraints were observed. To regulate prices, the Government, through the Direction Générale de la Concurrence et de la Consommation (DGCC), had implemented monitoring measures, and traders were organized into GICs (economic interest groups) to support regular market supervision.

The Gabonese Red Cross also planned to conduct continuous price monitoring to ensure that the intervention would not negatively affect local markets. Cash transfers were planned to be delivered through Airtel Mobile Money, with several withdrawal points already available within the communities to facilitate access for beneficiaries. Additional costs such as withdrawal and provider fees were included in the operational budget, while further market monitoring would allow adjustments to transfer values if necessary.

The operation covered the WASH and Health sectors, including the distribution of sanitation kits, mosquito nets, hygiene promotion activities, psychosocial support, and health awareness sessions integrated into sanitation campaigns. Sanitation campaigns were planned three times per month over a three-month period, accompanied by practical demonstrations to ensure the correct use of hygiene materials. The assessment and registration strategy relied on a team of 60 volunteers, 6 supervisors, and 11 staff members deployed across the targeted locations. Technical support was provided by the IFRC Cluster CVA Officer, who supported field assessments, validated the transfer value, and supervised the distribution process. Protection, Gender and Inclusion (PGI) and Community Engagement and Accountability (CEA) approaches were integrated throughout the response to ensure safe, inclusive, and participatory implementation of the intervention.

The strategy prioritized the most affected and vulnerable households, taking into consideration access constraints, dispersed populations particularly in Mouila and the limited operational capacity of the National Society. Activities were coordinated with the authorities of the Estuaire Governorate to avoid duplication, ensure complementarity, and facilitate effective implementation. This approach balanced urgency, coverage, and operational feasibility, enabling the National Society to deliver lifesaving support within the extended six-month implementation period. By combining Cash+ assistance with WASH, health, and community engagement activities, the intervention addressed both immediate humanitarian needs and strengthened medium term resilience.

The extension of the operation to Franceville and surrounding areas was expected to cover needs across several sectors. In WASH, support focused on household hygiene practices, household waste management, home cleaning, water management (collection, storage, and treatment), and environmental sanitation. In the Health sector, communities were supported through Information, Education and Communication (IEC) sessions conducted by volunteers to prevent waterborne and vector-borne diseases. Under Livelihoods, a market study and feasibility assessment of different assistance modalities were planned in Franceville and surrounding areas, along with a comprehensive multi-sectoral assessment to refine the data collected by the provincial committee. Based on assessment results, multi-purpose cash assistance was planned for an additional 280 households, and a reconciliation session was to be organized between the financial service provider, the IFRC Yaoundé Cluster, and the National Society.

To strengthen National Society capacity, a three-day integrated briefing covering relevant operational themes was organized for volunteers in Haut-Ogooué Province, preceded by the training of 20 first aid trainers from Estuaire, Ngounié, and Haut-Ogooué. An official launch of activities in the province was planned to facilitate the engagement of authorities and local stakeholders, and insurance coverage was to be provided for the additional volunteers and supervisors involved in the operation (22 personnel).

Under Communication and CEA, community meetings with local leaders and authorities were organized to encourage ownership and engagement in Red Cross activities. Community information and feedback management committees were also planned to ensure the quality and accountability of assistance, while communication and visibility materials were produced to support community outreach activities such as awareness sessions and focus group discussions.

The PGI approach was integrated throughout the implementation of the operation, ensuring that targeting considered vulnerabilities related to gender, age, and disability. Dignity kits were planned for women of reproductive age as part of the protection sensitive response.



For Monitoring and Evaluation, programme coordination through the evaluation unit ensured continuous monitoring of the operation across its different stages. The new operational area was integrated into technical coordination meetings at both headquarters and the IFRC Yaoundé Cluster level. A Post Distribution Monitoring (PDM) exercise was planned following distributions, and a lessons learned workshop is scheduled to be organized in one of the intervention localities. In view of the continuation and expansion of the operation, the National Society also requested the extension of the deployment of a surge support staff member to continue supporting implementation and coordination efforts.

Targeting Strategy

Who will be targeted through this operation?

With the additional 280 households from Franceville, the target population increase to 730 households. A total of 730 households identified as the most vulnerable were targeted by the operation. All targeted households received WASH and health support, while the 730 households that had lost their homes also received cash assistance to cover shelter and essential household needs.

Assessments focused on the general situation in Libreville, Mouila, Franceville, and surrounding areas, with particular attention given to the most affected populations in the 5th and 6th arrondissements of Libreville, the two districts of Mouila, and the two districts of Franceville. Findings from these assessments were used to update and refine the response strategy when necessary. Multi-sectoral assessments were conducted with neighbourhood leaders to complement and strengthen the initial assessments carried out by volunteers.

As of 30 January, the official launch of the DREF operation took place at the Gabonese Red Cross-National Headquarters in Libreville, with the participation of several stakeholders, including the Minister of Social Affairs. A similar launch event was planned for Mouila. Complaints committees and community feedback mechanisms were established to ensure accountability, while a communication plan was developed and implemented to ensure the visibility of the operation and inform communities about the response activities.

The targeting strategy for households to be assisted in Franceville was based on field visits conducted by Red Cross teams, who engaged with community leaders to identify the most vulnerable individuals within their communities. A list of vulnerability criteria was developed and discussed with community leaders, and once the beneficiary lists were established, they were validated jointly by the Gabonese Red Cross and community leaders.

Overall, priority was given to households that had totally or partially lost their homes due to the violent winds and torrential rains that occurred on the evening of 8 March 2026, particularly households with children under five years of age, pregnant or lactating women, persons living with disabilities, and elderly persons.

Explain the selection criteria for the targeted population

The operation targeted a total of 730 households across Libreville, Mouila, and Franceville, identified as the most vulnerable in the affected areas. These households had experienced partial or total destruction of their homes and included children under five years of age, pregnant women, persons living with disabilities, and elderly persons. The intervention aimed to ensure gender balance, targeting 50% women and 50% men, with particular attention given to female headed households. Priority was given to households facing multiple vulnerabilities, including households whose shelters had been partially or totally destroyed, households that had lost essential household items or productive assets, and those hosting vulnerable individuals.

Additional priority groups includes households with children under five, pregnant or lactating women, persons living with disabilities, elderly persons particularly those living alone or dependent on others female headed households without stable sources of income, households with members presenting specific needs or protection concerns, households with very limited or no income, and households whose livelihoods or small scale economic activities had been disrupted or destroyed by the disaster. Households presenting two or more vulnerability criteria were prioritized, as they were considered to face higher risk and reduced recovery capacity. The targeting process ensured gender balance among assisted households and promoted dignified, equitable, and inclusive access to assistance.

Many of the identified needs fell under the responsibility of local authorities and required resources and interventions beyond the scope of the DREF. The National Society therefore continued to coordinate with local authorities to finalize the intervention plan with the municipality. While awaiting clarity on the level of government support and how the National Society could complement it within its mandate, the operation focused primarily on the other two targeted localities. Continuous monitoring of the situation informed potential adjustments to the intervention and supported the identification of complementary approaches aligned with the government's response. The beneficiary selection criteria remained unchanged, with strong involvement of community leaders in the identification and validation process to ensure transparency and community ownership.



Total Targeted Population

Women	1,095	Rural	25%
Girls (under 18)	730	Urban	75%
Men	1,095	People with disabilities (estimated)	6%
Boys (under 18)	730		
Total targeted population	3,650		

Risk and Security Considerations (including "management")

Does your National Society have anti-fraud and corruption policy?	Yes
Does your National Society have prevention of sexual exploitation and abuse policy?	Yes
Does your National Society have child protection/child safeguarding policy?	No
Does your National Society have whistleblower protection policy?	No
Does your National Society have anti-sexual harassment policy?	Yes

Please analyse and indicate potential risks for this operation, its root causes and mitigation actions.

Risk	Mitigation action
Security risks with theft, harassment, or crowd-related incidents during distributions.	Coordination with local authorities, staggered distributions, and volunteer presence.
Exclusion or targeting errors with vulnerable households (elderly, disabled, displaced) may be missed.	Validation of lists with community leaders, feedback mechanism, and prioritization of most vulnerable households.
Misuse or diversion of cash (funds may be used improperly).	Transfers via Mobile Money, awareness sessions, and post distribution monitoring.
Access and logistical constraints (blocked roads, dispersed households, or adverse weather).	Route planning, volunteer support, and phased distributions.
Market and supply risks with limited availability or price inflation.	Market monitoring, coordination with GIC traders, and adjustment of transfer amounts if needed.



Technical issues with Mobile Money with network downtime or liquidity shortages.	Multiple withdrawal points, volunteer support, and cash alternatives.
The ongoing occurrence of strong winds, lightning, thunder, and heavy rainfall with the potential for landslides and flooding in the Red Cross teams' area of operation represents a real risk.	Establish a safety perimeter during deployment and equip volunteers with personal protective equipment (PPE). Ensure that teams are informed about the weather conditions.
Occurrence of waterborne and parasitic diseases.	Health prevention measures to be included in the intervention with the supply of drinking water to the teams, availability of sanitation kits, awareness-raising on the theme of WASH.
The problem of access in the disaster areas with the destruction of infrastructure (buildings, electricity poles). Access is also limited due to climatic conditions which require suitable protective equipment.	Equip volunteers and the assessment team with protective equipment for the problems of access for evaluations and information collection, the NS will select the volunteers closest to the families geographically and the digitization of the tools will help to compensate for too much movement for the less accessible areas.
Interruption of the National Society's activities due to the end-of-year holidays.	The National Society is active throughout the year, and during crisis periods it mobilizes the teams involved to be present in the field, even during times of crisis.
Disruption of the telephone and internet network during the cash transfer distribution.	Plan a working session with the Financial Service Provider (FSP) and consider implementing a cash payment process with their support.
Please indicate any security and safety concerns for this operation:	
All staff and volunteers will use personal protective equipment (PPE). Teams will remain within designated security perimeters. A rescue team will be on standby, and daily briefings and debriefings will be conducted to ensure safety.	
Has the child safeguarding risk analysis assessment been completed?	No

Planned Intervention



Shelter Housing And Settlements

Budget: CHF 0
Targeted Persons: 7,000
Targeted Male: -
Targeted Female: -

Indicators

Title	Target	Actual
# of volunteers involved in raising awareness about shelters	66	44
Nombre d'évaluations multisectorielles intégrant le secteur Shelter réalisées	3	1



Nombre de ménages touchés par le programme de Shelter	730	300
---	-----	-----

Progress Towards Outcome

A total of 27 volunteers were trained in Libreville on shelter related activities, including awareness raising on unsafe construction practices and disaster risk management. In Mouila, volunteers received the relevant briefing during the integrated briefing session.

In Franceville, 22 volunteers were identified to support the implementation of activities.



Multi Purpose Cash

Budget: CHF 231,790

Targeted Persons: 3,650

Targeted Male: -

Targeted Female: -

Indicators

Title	Target	Actual
# of volunteers trained on Cash	66	44
# of households receiving multipurpose cash for shelter and household items	730	300
% of households using cash for their priority needs	85	75
% of households reporting the cash amount was sufficient for immediate needs	70	65
% of households experiencing difficulties during cash withdrawal	10	2
% of households satisfied with the distribution modality	70	65

Progress Towards Outcome

The multisectoral assessment was completed in Libreville, and the targeting of vulnerable households was finalized. The Emergency Market Study (EMS) and Rapid Market Assessment (RAM) were conducted in Libreville to guide the intervention and ensure dignified and appropriate support. Volunteer training on the fundamentals of Cash and Voucher Assistance (CVA) and other thematic areas was completed, with 27 volunteers trained. Similar assessments, including EMS and market analysis, were underway in Mouila to inform the response strategy in that locality.

For the initial operation in Libreville, the entire cash distribution process had already been finalized, including the signing of the amendment with the Payment Service Provider (PSP), the preparation of the beneficiary lists, and the submission of the transfer request. The only remaining step was the transfer of funds to the PSP, which was already in progress to enable the imminent cash distribution to the 300 households targeted in Libreville.

The process between the Gabonese Red Cross and the Financial Service Provider was finalized for Mouila, and the distribution of kits and cash assistance for the 150 households was scheduled for the end of March. In Franceville, the 22 identified volunteers were to receive a briefing on Cash Transfer Programming (CTP) during the integrated briefing, and the cash distribution was planned for early April.

Budget: CHF 24,983
Targeted Persons: 9,000
Targeted Male: -
Targeted Female: -

Indicators

Title	Target	Actual
# of impregnated nets distributed	2,190	900
# of people sensitized	13,000	3,800
# of Number of volunteers trained on the PSP	66	44
# of personal protection kits for field volunteers (PPE and rain coat)	66	44

Progress Towards Outcome

A rapid volunteer training was conducted from 29 to 31 January 2026, covering epidemic prevention, first aid, and psychosocial support, including Psychological First Aid (PFA). Mosquito nets were already available and awaiting distribution, while WASH and health sensitization sessions were ongoing in the affected communities. In Libreville, households received 900 insecticide-treated mosquito nets during the distribution of kits. Disease prevention activities were completed with community awareness sessions, reaching more than 3,900 people through communication and sensitization efforts. Psychosocial support teams conducted individual consultations with 80 people in Libreville.

In Mouila, 17 volunteers received a briefing during the integrated briefing session, and community awareness sessions were scheduled to take place on the 13th and 14th. In Franceville, volunteers were expected to receive an integrated briefing in the coming days, including sessions on disease prevention and other relevant response themes.



Water, Sanitation And Hygiene

Budget: CHF 85,263
Targeted Persons: 3,650
Targeted Male: -
Targeted Female: -

Indicators

Title	Target	Actual
# of 5L liquid soap distributed	730	300
# of households receiving WASH support	730	300
# of shelter kits distributed	300	300

Progress Towards Outcome

The purchase of 300 household hygiene kits and 10 sanitation kits for the committee was completed, and distributions took place on 14 and 15 February. An additional 150 hygiene kits were planned for newly affected households in Mouila. Awareness materials, including posters and leaflets, were designed and sent for printing, while WASH sensitization sessions were conducted in the affected communities.

An additional 280 hygiene kits for affected households and 10 sanitation kits for the Haut-Ogooué Provincial Committee were planned to be procured. Additional awareness materials for volunteers were also planned for printing, and volunteers were to be deployed in the field to conduct mass awareness campaigns and door-to-door sensitization activities.



Protection, Gender And Inclusion

Budget: CHF 0

Targeted Persons: 7,000

Targeted Male: -

Targeted Female: -

Indicators

Title	Target	Actual
% of the team involved in the intervention having been briefed on ERP and PSEA	60	47
% of feedback collected related to PGI, PSEA and child protection	100	10
% of sensitive feedback received that is handled and addressed appropriately	100	10
% of volunteers and staff trained on PGI	100	68

Progress Towards Outcome

Households including people with specific needs were prioritized during the targeting process and received tailored support during distributions. Volunteers and staff were trained on Protection, Gender, and Inclusion (PGI) and general protection principles, while awareness sessions were conducted in the affected communities in Libreville.

In Mouila, the branch team conducted refresher sessions for volunteers involved in the implementation of the DREF operation, during which PGI was one of the key themes addressed.

As part of Update No. 2 of the operation, which included Haut-Ogooué Province, approximately 30% of women within the targeted population (219 out of 730 beneficiaries) were planned to receive dignity kits containing sanitary pads, soap, and body cream, with priority given to vulnerable young women. In the selection of volunteers and supervisors for Franceville, both men and women were included, with the proportion of women not falling below 40%. In addition, volunteers from the Haut-Ogooué Provincial Committee were scheduled to receive training on PGI themes before being deployed to the field.



Risk Reduction, Climate Adaptation And Recovery

Budget: CHF 1,090

Targeted Persons: 13,000

Targeted Male: -

Targeted Female: -



Indicators

Title	Target	Actual
# of volunteer field visits per month	3	1
# of volunteers involved in DRR	66	44

Progress Towards Outcome

Communication materials have been produced to support awareness campaigns, and 27 volunteers have been trained on disaster risk management and Awareness-raising sessions are ongoing in the communities.



Community Engagement And Accountability

Budget: CHF 10,561

Targeted Persons: 2,300

Targeted Male: -

Targeted Female: -

Indicators

Title	Target	Actual
# of community meeting	18	9
# of FGD conducted	18	9
Number of feedback collected that are treated	150	125
Number of volunteers trained on continuous assessment method	66	44

Progress Towards Outcome

The volunteer briefing took place from 29 to 31 January 2026 in Libreville. The objective was to strengthen the capacities of volunteers so that they could provide accurate information during field awareness campaigns and community outreach activities.

In Mouila, 17 volunteers received a rapid integrated briefing on the key themes of the DREF Windstorm operation on 12 March 2026.

In Franceville, 22 volunteers and supervisors were scheduled to receive an integrated briefing focusing on communication, community engagement, and accountability. All activities were implemented following the same approach used in the other intervention localities.



Secretariat Services

Budget: CHF 50,842

Targeted Persons: 7

Targeted Male: -

Targeted Female: -



Indicators

Title	Target	Actual
# of people deployed from the delegation	3	1
# of monitoring missions conducted	3	1
# of supply and distribution plans produced	1	0
# of Surge deployed	1	1
Official DREF launch conducted	3	1

Progress Towards Outcome

The cluster has set up weekly online meetings for regular monitoring of the operation's implementation by the NS and to provide them with certain guidance. An exchange group has also been created on the WhatsApp platform to continue daily monitoring and also to discuss some urgent matters.

In addition to this remote technical support given to the NS by the IFRC cluster colleagues, the IFRC CVA Officer has already been deployed on the ground to provide technical support to the National Society. The surge has been recruited and deployed with the support of the cluster and regional office.

Under the high patronage of the National President of the Gabonese Red Cross and the Head of the IFRC Cluster in Yaoundé, the official DREF launch took place on 30 January at the National Headquarters of the Gabonese Red Cross in Libreville, with a gathering of guests and key stakeholders.



National Society Strengthening

Budget: CHF 68,312

Targeted Persons: 350

Targeted Male: -

Targeted Female: -

Indicators

Title	Target	Actual
# of staff mobilized and deployed in branches for monitoring	13	13
# of assessment missions conducted	3	1
# of monitoring missions conducted by the NS (Programme and Finance)	3	1
# of insured volunteers	66	44
# of volunteers trained on the different themes	66	44



Progress Towards Outcome

Salary advances for staff have been processed, and fuel has been purchased to facilitate field travel. Telephones, call credit, internet, and office supplies are available and actively supporting operations. A drone has been acquired to assist with mapping affected areas, and vehicle maintenance has been initiated.

A total of 13 staff members were mobilized and deployed by the National Society, along with 66 volunteers from the Libreville, Mouila and Franceville branch. All 66 volunteers have received training on DREF-related topics to ensure effective implementation of the operation.

About Support Services

How many staff and volunteers will be involved in this operation. Briefly describe their role.

To carry out this evaluation, 66 volunteers were deployed in Libreville, Mouila and Franceville. Four staff at the national headquarters will also have the role of supervising and participating in the implementation of the evaluation and 5 NDRT members will be deployed at the provincial level who will ensure the role of local coordination.

Within the National Society, it is not relevant to dissociate training too much, as it limits the possibilities of rotation when some volunteers withdraw especially at the end of the year. As a result, all volunteers will be trained and then distributed according to their performance and experience, as assessed by the instructors, to cover the different specific activities. For the Cash activities, 10 volunteers will be mobilized, while the others will support integrated awareness-raising actions. Only three focal points will be designated for the ERP and the CEA. For the PSS, the National Society has a dedicated team at the headquarters level. Similarly, focal points exist for these different sectors within the National Society, with headquarters based in Libreville.

For the implementation of the operation, the other services will support the technical team. This is the case of:

- Logistics and purchasing which will coordinate with the IFRC Cluster logistics for the various items to be purchased as well as their delivery to the field.
- APS (Psychosocial Support) Manager. will coordinate the assessment and psychological support of the victims and the volunteers involved in the operation; he also sets up listening units.
- Monitoring and evaluation manager: he coordinates and plans the evaluation actions to be carried out in the field; he draws up the evaluation report and ensures that the evaluation tools are properly completed; he contributes to the implementation of indicators for decision-making; he analyses and interprets the results for statistical processing.
- Community Engagement and Admissibility Manager: His role is to collect community feedback, ensure that the DREF implementation team appropriates the CEA approach
- Health Manager: Coordinate health activities (distribution of mosquito nets, health promotion activities)
- WASH Manager: Coordinate WASH activities in the field (awareness-raising, distribution of kits)
- Financial Manager: this role is to monitor the financial situation on the course of the project and produce financial report. Ensures compliance with the management procedures of the IFRC and the CRG, develops the financial management tools of the activity.
- Budget control: his mission is to monitor the budget, the compliance of the purchasing procedure and participate in the production of the financial report.

Will surge personnel be deployed? Please provide the role profile needed.

A resource person with strong expertise in disaster management, assessments, and programme management was deployed to support the National Society in the evaluation and implementation of the operation. The deployment was planned for a duration of three months.

If there is procurement, will it be done by National Society or IFRC?

The cluster supported the purchase of mosquito nets and their delivery to Libreville. For the remaining items, the National Society conducted the procurement procedures with support from the cluster. Cash transfer procedures were also implemented jointly by the National Society, with technical support from the cluster. The same approach was planned for the additional activities to be implemented in the locality of Mouila.



How will this operation be monitored?

The National Society has defined clear roles and responsibilities for the operation.

Five supervisors from local branches will be deployed for three months to oversee response activities, coordinate with field teams, and report all information to Headquarters.

Two monitoring missions covering funding and programme are planned to ensure continuous follow-up of activities and proper coordination with field teams.

The deployed Surge will monitor the operation throughout their deployment under the leadership of the IFRC's Coordinator in Yaoundé.

The IFRC Cash Transfer Officer will support the NS with Market analysis and feasibility assessments, Updating the financial service provider contract (Airtel or alternatives) and guidance on cash delivery, vouchers, or potential in-kind distribution adaptations

Other IFRC technical departments (CEA, PGI, PMER, logistics, WASH, health, and communications) will provide remote support for assessment tools, analysis, and implementation oversight.

The logistics team works closely with the NS for procurement, transport, and delivery of relief items to the field. Field teams are supported remotely by sectoral experts to ensure smooth implementation of WASH, health, shelter, cash, and community engagement activities.

Progress will be tracked using predefined indicators for each sector (shelter, WASH, health, and cash). Post-Distribution Monitoring (PDM) will be conducted for cash interventions and other distributions to ensure timely, accurate, and accountable delivery of assistance. Supervisors and field staff will provide regular updates, and all collected data will feed into HQ reporting systems.

At the end of the operation, a one-day workshop will be organized, bringing together: beneficiaries, local authorities, partners, volunteers, the NS management team, and the IFRC Delegation. The workshop will assess the quality, relevance, and effectiveness of the interventions and inform future operations.

Please briefly explain the National Societies communication strategy for this operation

To support the visibility of GRC actions, the NS will make its media pages available mainly on social networks. Strategic meetings with local leaders and authorities will also help promote the NS's actions. The volunteers in their mission and the visibility of the Red Cross' actions in the field.

Media coverage will be provided during the distributions to communicate on the CRG's actions on the communities.

A launch activity for the DREF will be carried out at the beginning of the operation in Libreville and Mouila.

The IFRC Communications team will provide support to the NS to produce the "One page" which summarizes and provides information about the operation and the production of all other communication tools.

The IFRC communication team will also support the MAF communication team in writing articles and documenting the operation and saving content on ShareRed. A communication mission will be organized.



Budget Overview



DREF OPERATION

Code - GABON RED CROSS

Vent violent à Libreville, Mouila et Franceville/ Gabon

Operating Budget

Planned Operations	353 687
Shelter and Basic Household Items	0
Livelihoods	0
Multi-purpose Cash	231 790
Health	24 983
Water, Sanitation & Hygiene	85 263
Protection, Gender and Inclusion	0
Education	0
Migration	0
Risk Reduction, Climate Adaptation and Recovery	1 090
Community Engagement and Accountability	10 561
Environmental Sustainability	0
Enabling Approaches	119 154
Coordination and Partnerships	0
Secretariat Services	50 842
National Society Strengthening	68 312
TOTAL BUDGET	472 841

all amounts in Swiss Francs (CHF)

[Click here to download the budget file](#)



Contact Information

For further information, specifically related to this operation please contact:

National Society contact: Veronique TSAKOURA, National President, tsakourav2@yahoo.fr, +24174062834

IFRC Appeal Manager: Adesh TRIPATHEE, Head of Cluster Delegation, adesh.tripathee@ifrc.org

IFRC Project Manager: Josuane Flore TENE, Operation Manager, josuaneflore.tene@ifrc.org

IFRC focal point for the emergency:

Josuane Flore TENE TCHOKODEU, Disaster and Crisis Prevention, Response and Recovery (DCPRR) Coordinator, josuaneflore.tene@ifrc.org, +237677098790

Media Contact: Muriel ATSAMA OBAMA, Communications Officer-French Web Content, Muriel.ATSAMA@ifrc.org, +237650610006

[Click here for the reference](#)

