



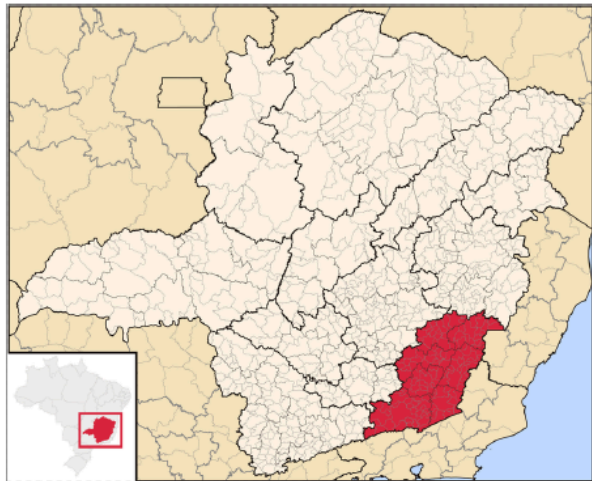
Landslide and collapse of buildings in Juiz de Fora. 24/2/26. Source: Reuters.

Appeal: <b>MDRBR012</b>	Hazard: <b>Flood</b>	Country: <b>Brazil</b>	Type of DREF: <b>Assessment</b>
Crisis Category: <b>Yellow</b>	Event Onset: <b>Sudden</b>	DREF Allocation: <b>CHF 68,693</b>	
Glide Number: -	People at Risk: <b>5,510 people</b>	People Targeted: <b>5,510 people</b>	
Operation Start Date: <b>16-03-2026</b>	Operation Timeframe: <b>2 months</b>	Operation End Date: <b>31-05-2026</b>	DREF Published: <b>25-03-2026</b>
Targeted Regions: <b>Minas Gerais</b>			

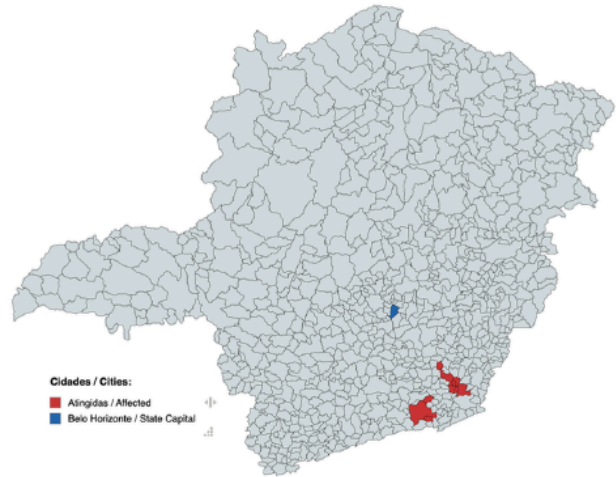
# Description of the Event

## Date of event

26-02-2026



Região da Zona da Mata / Zona da Mata Region



Areas affected by floods and landslides in Minas Gerais

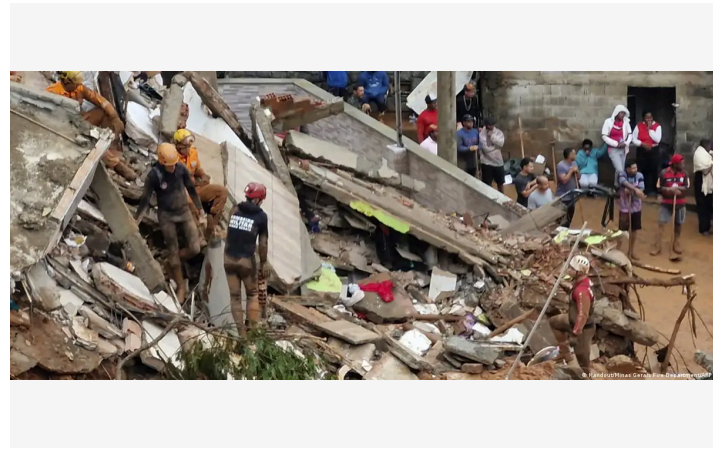
## What happened, where and when?

Between February 24/2/26 and 25/2/26, flooding caused by rain and landslides was reported in the southeast of the Brazilian state of Minas Gerais. The most affected areas were Juiz de Fora, Ubá, Matias Barbosa, Senador Firmino, Rodeio, Guidoal, Cataguases, Astolfo Dutra, Divinésia, Dona Eusébia, Itamarati de Minas, Piau, and Rio Pomba.

Although the rains are seasonal, this time the event has had a high humanitarian impact concentrated in the areas mentioned above. To date (March 5), approximately 5,510 people have been reported affected. Of these, all have been displaced, 59 have died, and 15 are missing. It is estimated that the livelihoods of productive regions in these areas have also been affected.

Among the most affected areas, Juiz de Fora has a population of 540,000 people and is located in the southeast of the state, on the border with Rio de Janeiro, on the banks of the Parabaiba Sur River (middle Paraibuna basin), 272 km from Belo Horizonte. Ubá, meanwhile, is located in the southeast of Zona da Mata, between the Parabaiba Sur and Doce rivers, has a population of 103,000, and is 290 km from Belo Horizonte.

In terms of historical exposure, Minas Gerais has faced recurrent flooding; within the state, the prevalence is higher in Juiz de Fora than in Ubá. Since 2000, the state has recorded at least 19 significant hydrometeorological events, distributed evenly over time, with a predominance of storm flooding.



Rubble from a collapsed building in Juiz de Fora. 24/2/26. Source: Reuters.

Buildings destroyed in Juiz de Fora. 24/2/26. Source: State Fire Department

Source Name	Source Link
1. GDACS	<a href="https://www.gdacs.org/">https://www.gdacs.org/</a>
2. EM-DAT	<a href="https://www.emdat.be/">https://www.emdat.be/</a>

# Current National Society Actions

## Start date of National Society actions

24-02-2026

<b>Multi Purpose Cash</b>	The Minas Gerais state branch is organizing preparations for the operationalization of the delivery of conditional humanitarian cards to 4,000 families, with R\$ 1,250 (amount stipulated by the branch to meet basic needs for a period of 60 days for a typical family of three). People are being registered based on data from local governments, and the cards are being collected at the branch's distribution centers.
<b>Coordination</b>	The response is being coordinated between the Minas Gerais state branch, local governments, and the state Civil Defense.
<b>National Society Readiness</b>	While the National Society continues its institutional restructuring process, the state branch in Minas Gerais has a team trained by the National Intervention Team (NIT) and received training in Expanded Vulnerability and Capacity Assessment (EVCA) in 2025. This branch also completed the National Society Development (NSD) assessment in 2024 and has previous experience in cash transfer programs (CTPs) and Water, Sanitation, and Hygiene (WASH) initiatives.
<b>Assessment</b>	The team from the Minas Gerais state branch is currently conducting a needs assessment using mostly secondary data from the Civil Defense and local governments. The area covered includes 16 cities in Minas Gerais.
<b>Resource Mobilization</b>	The Minas Gerais state branch has launched an open campaign called SOS Chuvas (SOS Rain) to collect in-kind and monetary donations. These are being collected at the branch's state headquarters in Belo Horizonte.



# IFRC Network Actions Related To The Current Event

<b>Secretariat</b>	The International Federation of Red Cross and Red Crescent Societies (IFRC) has a Country Cluster Delegation (CCD) in Argentina, which provides assistance and support to the countries of the Southern Cone and Brazil. This Delegation coordinates with the state branch of Minas Gerais and the Disaster and Crisis Department of the IFRC Regional Office for the Americas, based in Panama. Throughout the emergency, constant communication has been maintained, and technical assistance has been provided through the CCD in support of this DREF request. The CCD's programmes and operations coordination team is in permanent contact with the branch and is supporting the definition of this response strategy.
<b>Participating National Societies</b>	There are no PNSs in the country.

## ICRC Actions Related To The Current Event

The International Committee of the Red Cross (ICRC) has its regional office in Brasília, Brazil. In addition to fulfilling its mandate—which consists of working with authorities to integrate, implement, and promote international humanitarian law and norms on the use of force—the ICRC focuses on strengthening the National Society's capacity to respond to emergencies in situations of violence and crisis. It also offers Restoring Family Links services.

## Other Actors Actions Related To The Current Event

<b>Government has requested international assistance</b>	No
<b>National authorities</b>	<p>National authorities have officially recognized the state of emergency in Juiz de Fora and have ordered a "maximum alert" for the National Civil Defense, which deployed reinforcements and resources to the region. Likewise, Brazil's federal government—through the Ministry of Integration and Regional Development—has prioritized humanitarian assistance and safe housing after record February rains in Minas Gerais, approving R\$17.5 million to date (CHF 2,6M) in humanitarian support to the crisis, with a planned allocation of R\$ 60M (CHF 8,9M). , and establishing a Situation Room. National Civil Defense produced nearly 30 work plans in four days; 12 are already approved (humanitarian aid, restoration of essential services, and reconstruction), with 48 under review, financing food baskets, hygiene and cleaning kits, PPE, fuel, and debris removal. Actions include joint monitoring and alerts with state and municipal civil defenses, federal recognition of emergencies via S2iD to unlock funds, deployment of the "Defesa Civil Alerta" cell-broadcast warning system, and the implementation of an assisted home purchase program was announced for those affected by floods and landslides.</p> <p>The National Institute of Meteorology (Inmet) issued an "orange alert" for storms in 14 states, including Minas Gerais, São Paulo, and Rio de Janeiro, and warned of the risk of further landslides and flooding.</p>
<b>UN or other actors</b>	The Liga do Bem (League of Good), formed by volunteer employees of the Federal Senate, launched the "SOS Zona da Mata Mineira" campaign to help families affected by heavy rains in cities such as Juiz de Fora and Ubá, in Minas Gerais.



The Civil Defense of Mato Grosso do Sul and the Military Fire Department of Mato Grosso do Sul launched a fundraising campaign in Campo Grande to help families affected by the rains in Minas Gerais.

The International Organization for Migration (IOM) office in Brazil has announced that it is ready to provide local and national authorities with assistance and technical support. In light of the situation, the IOM has announced its support for national and local authorities in assisting affected communities, including migrants.

#### Are there major coordination mechanism in place?

A coordination system is in place between the Minas Gerais state branch, the Civil Defense and the local governments.

## Operational Strategy

### Overall objective of the operation

Through this DREF Operation, the "Cruz Vermelha Brasileira" (CVB), hereafter referred to as the Brazilian Red Cross (BRC) aims to conduct a multisector and detailed assessment of the humanitarian needs of people affected by flooding in Minas Gerais, in order to generate timely, disaggregated, and high-quality evidence that will enable the definition of the scope, sectoral priorities, and response modality of a potential Response DREF operation.

### Operation strategy rationale

Through this intervention, the Branch of Minas Gerais aims to conduct an assessment in 4 to 5 weeks and will work with BRC staff and volunteers, as well as with the support of IFRC CCD staff.

The intervention will be designed with a participatory approach to conduct the assessments in coordination with government authorities in the different departments. To ensure good coordination, meetings will be held to share the structure of the assessment and adjust it according to the information needs of all participating actors.

The assessment will use a sampling approach with adequate representation of community groups in the targeted departments. The assessment process will involve participatory methodologies, including interviews with key informants such as governmental actors, community representatives, and other organizations (if any); focus group discussions; and field visits for direct observation and cross-checking of data with secondary information.

All population groups will also be included in the assessment to ensure better community representation. Since the Minas Gerais branch is conducting a needs assessment based on secondary sources of information, a more detailed procedure is required, one that includes primary community evidence and is aligned with IFRC standards.

A request is included to deploy rapid response personnel through the surge mechanism who will support the technical assembly of the survey, analysis of the data collected during the assessments, and development of the assessment report, in addition to providing recommendations in case a transition to response for floods/landslides is pursued.

The BRC Minas Gerais branch has previous experience working in pluvial floods and landslides and will lead the assessment. There are also staff and volunteers trained as National Intervention Teams who are available to support the assessment process.

This DREF for assessment involves collaborative work with local authorities from the very beginning of the survey design, in order to ensure joint efforts and maximize the outcome of the assessments.

At the end of the operation, a report with recommendations to inform a potential transition to a response DREF will be produced.

Among the key topics to be assessed are:

- The actual magnitude of immediate humanitarian needs and early recovery needs.
- Gaps in temporary shelter, livelihoods, access to safe water, and basic services.
- Protection risks differentiated by sex, age, and disability status.
- Existing response capacities at municipal and state levels.
- The potential evolution of the impact considering the continuation of the rainy season.

Given the recurrent nature of flooding in the region, there is a risk of normalizing the impact and underestimating accumulated needs,



particularly among households that have recently experienced previous events. Likewise, the geographic dispersion of the impacts makes it difficult to prioritize solely based on aggregate figures.

In this context, the strategy will allow:

- Conducting a rapid, multisectoral, and targeted assessment in municipalities with the highest concentration of displaced people and people living on the streets.
- Identifying differentiated humanitarian needs and assistance gaps.
- Analyzing secondary risks (public health, additional landslides, infrastructure deterioration).
- Evaluating the relevance and potential scope of a DREF response operation or complementary support through other mechanisms.
- Strengthening coordination with local authorities and humanitarian actors, in line with the National Society's auxiliary role.

The assessment strategy will adopt a participatory approach, incorporating Protection, Gender and Inclusion (PGI) and Community Engagement and Accountability (CEA) considerations, ensuring the collection of disaggregated data and avoiding double counting of people reached, in accordance with the Federation's technical standards. In this regard, the assessment will consider using the Washington Group Short Set questions to capture functional limitations, questions to identify specific vulnerabilities among older adults, systematic registration of caregivers and caregiving burdens. Also, data cross-analysis will be considered to identify groups that are often overlooked or invisible.

In line with risk-based management, this operation will support decision-making proportional to the real impact of the event, avoiding both over-response and under-response, and ensuring that any eventual intervention is based on updated evidence and contextualized analysis.

As background to this process, the implementation of the Brazil Floods operation (MDRBR011) between 2024 and 2025 in Rio Grande do Sul stands out. In the context of the National Society's institutional situation, this operation made it possible to identify the main lessons around institutionalizing CEA and PGI from the outset; ensuring robust, sector-specific needs analyses; making finance, procurement, and logistics more flexible in contexts without a host agreement; strengthening local capacities (including a Lusophone presence) and inter-branch/inter-agency coordination channels; and maintaining staff well-being mechanisms and financial traceability as an integral part of the response.

These lessons have been taken into account in this emergency through a more in-depth analysis of the disaster and closer work with the Minas Gerais branch to mitigate potential risks. In this regard, funds will be fully managed by the IFRC Delegation, either through direct payments from ARO, with Surge personnel, or via the ICRC bank account.

## Targeting Strategy

### Who will be targeted through this operation?

The operation will focus on assessing the impact of the floods and landslides in the state of Minas Gerais. Priority will be given to families directly affected by the flooding whose homes have suffered total or partial damage.

### Explain the selection criteria for the targeted population

The needs of all population groups will be taken into account, considering age, sex, gender, and people with disabilities or special needs.

Families whose homes have suffered significant damage or total or partial destruction due to the disaster.

Families with members who are children, older adults (over 60 years old), pregnant women, and/or persons with disabilities.

Families that are not receiving direct assistance from other organizations, to avoid duplication of efforts and ensure that aid reaches the greatest possible number of affected people.

## Total Targeted Population

Rural	6%	Urban	94%
People with disabilities (estimated)	13%		
Total targeted population	5,510		



# Risk and Security Considerations (including "management")

Does your National Society have anti-fraud and corruption policy?	No
Does your National Society have prevention of sexual exploitation and abuse policy?	No
Does your National Society have child protection/child safeguarding policy?	No
Does your National Society have whistleblower protection policy?	No
Does your National Society have anti-sexual harassment policy?	No

**Please analyse and indicate potential risks for this operation, its root causes and mitigation actions.**

Risk	Mitigation action
Distance between the Headquarters of the State Branch and the affected area	Provisions will be made for the adequate organization of field missions, including accommodation and transportation.
Persistent rainfall hindering access	The use of not only in-person data collection methods will be considered, but also remote interviews, secondary information, and social listening.
The branch has no previous experience working with IFRC	Any necessary training updates will be provided if needed.
Financial Management	Considering lessons learned from other operations in Brazil, no transfers will be made to the branch; the expenses of this operation will be executed 100% by the IFRC.
IFRC can't operate financially in Brazil	As it was done during MDRBR011 - PBRE504 operation, the payments of services and volunteers per diem will be done directly by the surge team and the finance CCD team on monitoring visits schedule. An option to reactivate the ICRC account that was used in the above-mentioned operation will be explored.
With the NS undergoing CMC restructuring process and the branch already active may create operational, reputational, fiduciary, and coordination risks	The branch leadership has signed the roadmap of the restructuring process and has successfully completed the branch diagnosis in October 2024. To ensure proper coordination, this Assessment DREF was discussed with the Branch leadership, most of whom have been part of the NIT and AVCA trainings in 2025. No publications with IFRC will be posted in any social media. No financial transactions will be done with the Branch.

**Please indicate any security and safety concerns for this operation:** n/a

Has the child safeguarding risk analysis assessment been	No
--	----



# Planned Intervention



## Secretariat Services

**Budget:** CHF 68,693  
**Targeted Persons:** 0

### Indicators

Title	Target
# of needs assessments completed and validated on time	1
% of data collected disaggregated by age and sex	100
Surge deployment	1

### Priority Actions

- Surge deployment
- Field assessment
- Coordination and implementation of assessment
- Monitoring missions in terms of operational support from finance and PMER officers to ensure compliance with contracts and payments, as this is a direct implementation.
- Assistance in bringing internal processes into line with IFRC standards.
- Support during the lessons learned process.

## About Support Services

**How many staff and volunteers will be involved in this operation. Briefly describe their role.**

A total of 50 volunteers are involved in the response. The main roles include logistics, damage and impact assessment, IM, and communication.

**Does your volunteer team reflect the gender, age, and cultural diversity of the people you're helping? What gaps exist in your volunteer team's gender, age, or cultural diversity, and how are you addressing them to ensure inclusive and appropriate support?**

Yes



## Will surge personnel be deployed? If yes, please provide the role profile needed.

Yes

Assessment Coordinator - 1,5 months. This person will lead damage and needs assessments: plans scope and methodology; mobilize and train teams; coordinate access, logistics, and security; design tools and sampling; oversee data collection and quality; triangulates secondary and primary data; analyze and prioritize needs; produce actionable reports and recommendations; brief stakeholders and ensure information management and accountability.

The goal will be to support the Minas Gerais state branch by assisting its team in conducting a damage assessment and needs analysis, as well as in harmonizing the branch's internal procedures with IFRC standards.

Additional staff for Finance and PMER will be deployed to bring operational to ensure compliance with contracts and payments, and to guarantee the quality of the needs assessment.



# Budget Overview



## DREF OPERATION

- Brazilian Red Cross  
Brazil: Floods

### Operating Budget

<b>Planned Operations</b>	<b>0</b>
Shelter and Basic Household Items	0
Livelihoods	0
Multi-purpose Cash	0
Health	0
Water, Sanitation & Hygiene	0
Protection, Gender and Inclusion	0
Education	0
Migration	0
Risk Reduction, Climate Adaptation and Recovery	0
Community Engagement and Accountability	0
Environmental Sustainability	0
<b>Enabling Approaches</b>	<b>68,693</b>
Coordination and Partnerships	0
Secretariat Services	68,693
National Society Strengthening	0
<b>TOTAL BUDGET</b>	<b>68,693</b>

*all amounts in Swiss Francs (CHF)*



# Contact Information

For further information, specifically related to this operation please contact:

**National Society contact:** Bernardo Eliazar, Branch Secretary General, secretaria@cvbmg.org, +55 31 991373738

**IFRC Appeal Manager:** Florent Del Pinto, Head of Delegation, florent.delpinto@ifrc.org, +41 7541 98371

**IFRC Project Manager:** Virginia Laino, Programs and Operations Coordinator, virginia.laino@ifrc.org, +54 1166248470

**IFRC focal point for the emergency:** Virginia Laino, Programs and Operations Coordinator, virginia.laino@ifrc.org, +54 1166248470

**Media Contact:** Susana Arroyo, Regional Communications Coordinator, susana.arroyo@ifrc.org, +507 69993199

[Click here for the reference](#)

