



Multi-sectoral Assessment – Focus Group Discussion with community, Amboditandroho village, Toamasina [Photo credit: IFRC/MRCS]

<p>Emergency appeal №: MDRMG027 Emergency appeal launched: 12/02/2026 Operational Strategy published: 26/02/2026</p>	<p>Glide №: TC-2026-000015-MDGCyclone</p>
<p>Operation Update #2 Date of issue: 01/04/2026</p>	<p>Timeframe covered by this update: From 12/02/2026 to 21/03/2026</p>
<p>Operation timeframe: 9 months (12/02/2026 – 31/12/2026)</p>	<p>Number of people being assisted: 45,000 people</p>
<p>Funding requirements (CHF): CHF 7.5 million for the IFRC Secretariat Ask CHF 5 million Federation-wide</p>	<p>DREF amount initially allocated: CHF 1,000,000</p>

To date, this Emergency Appeal, which seeks CHF 7,500,000 (Federation-wide) is 24% percent funded. Further funding contributions are needed to enable the Malagasy Red Cross Society, with the support of the IFRC and Movement Partners, to continue with the response efforts and provide humanitarian assistance and protection to those affected by the 2026 cyclones.

A. SITUATION ANALYSIS

Description of the crisis

In late January and February 2026, Madagascar was struck by two major cyclones within just ten days: Fytia and Gezani. The cumulative impact left communities with extensive shelter needs, cut off from food, health services, and essential supplies.

Tropical Cyclone (TC) Fytia made landfall on 31st January 2026 as a Category 3 system, crossing Madagascar on 1 February 2026 before gradually weakening. The cyclone triggered widespread flooding across the Northwestern parts of the country, affecting nine regions. It resulted in 14 deaths, impacted more than 203,000 people, damaged over 20,000 houses, and displaced more than 39,400 individuals. Following the impact of TC Fytia, Tropical Cyclone Gezani made landfall on 10th February 2026 near the Toamasina Region as a Category 4 system, bringing maximum sustained winds of 211–250 km/h. At landfall, the cyclone devastated approximately 75 per cent of the city and impacted other areas across the country, leading to a national disaster declaration and an international request for support from the Government of Madagascar. TC Gezani triggered widespread flooding across Northwestern Madagascar, affecting nine regions. The cyclone resulted in 62 deaths, more than 478,000 people affected, 20,800 displaced, and over 101,606 houses flooded, damaged, or destroyed.

The latest reports estimate that in total, 60 districts across 14 regions in Madagascar were affected by TC Fytia and TC Gezani. The hardest hit areas were Soalala and Marovoay in Boeny (accounting for about 80% of Fytia's impact), Toamasina and Mahajanga (account for about 75% of Gezani's impact), and rural areas of Alaotra-Mangoro, whose lands were impacted by floods brought by both storms.

Cumulatively, these events left 681,000 people affected, with 73 deaths, 811 injured, over 60,200 displaced, and 122,000 homes damaged or destroyed, alongside severe losses to infrastructure, rice fields, and livestock. The situation is compounded with ongoing lean season, concurrent crises such as food insecurity, Mpox outbreak and other structural economic and health vulnerabilities. The Government's call for support on 12th February 2026 mobilised humanitarian actors. However, assistance remains limited compared to the scale of needs and is largely concentrated in urban areas, particularly Tamatave/Toamasina. The situation is further compounded by the ongoing lean season and concurrent structural vulnerabilities, including food insecurity and the Mpox outbreak, which heighten the needs of the affected populations.

Summary of response

Overview of the host National Society and ongoing response

The Malagasy Red Cross Society (MRCS) has been at the forefront of the cyclone response, transitioning from anticipatory action, to scaling up its relief operations through the activation of its Cyclone Early Action Protocol (EAP). Following the government's call for support on February 12, the National Society mobilized to provide immediate assistance. Meanwhile, MRCS, with the support of the IFRC continues contributing to national coordination efforts. The following are the key activities implemented:

- Volunteers were mobilised from the onset to support the authorities, notably the Risk and Disaster Management Bureau (Bureau National de Gestion des Risques et des Catastrophes/BNGRC). They conducted joint assessments, site management and delivering key prevention messages, especially in the camps.
- Prior to the landfall of Cyclone Gezani, the MRCS activated its Cyclone Early Action Protocol (EAP) on 9th February 2026, allowing for trigger monitoring reaching 100,000 people through radio and 600 door-to-door visits in anticipation of the system. MRCS volunteers supported evacuations of affected people and managed 8 sites. With the support of the World Food Programme (WFP), MRCS distributed 630 cash grants and 53 dignity kits to at-risk households.

- The Madagascar - Tropical Cyclones, 2026 Emergency Appeal (MDRMG027) was launched in February to address the cumulative impacts of Cyclones Fytia and Gezani. This was supported by an initial IFRC-DREF grant of CHF 1 million to ensure a rapid response by MRCS. In addition, a Crisis Modifier (CM) was activated through the support of the UK Foreign, Commonwealth and Development Office (FCDO). FCDO has a three-year project with MRCS that allows for the quick deployment of in-country funds and resources to initiate quick response.
- Through the DREF and a contribution from the FCDO-funded climate resilience programme, 1,500 households have been assisted with NFI kits in Boeny Region. Specifically, MRCS distributed 1,481 shelter kits, 1,500 WASH kits, 1,500 dignity kits, and 1,485 kitchen sets in Ambato Boeny and Mitsinjo.
- Additionally, 1,996 households were supported with multi-purpose cash and NFI distribution in the rural commune of Amboditandroho (Toamasina 2 district) through the FCDO CM.
- French Red Cross, through the PIROI office, has sent 2,250 shelter kits with 4,500 tarpaulins, 2,250 mosquito nets and 2 tents (48m2) that can be used for storage. The material has arrived in Toamasina and is planned for distribution in Toamasina Suburbaine.
- To support a timely response, to cover operational gaps and reduce procurement delays, Membership efforts have focused on mobilizing pre-positioned stocks, particularly those within MRCS warehouses, and much of which is supported by PIROI. These actions highlight the success of early action protocols already in country and supported by the wider Membership.
- Following a request made by the Prime Minister's office to the IFRC to support the BNGRC, the IFRC is leading a Multi-Sectoral Needs Assessment in full coordination and partnership with the BNGRC, IFRC, and UN agencies to evaluate the situation from a recovery perspective. This assessment builds on an initial rapid aerial assessment conducted by the BNGRC in Atsinanana Region immediately after the cyclones.
 - The goal of the assessment is to orient a coordinated humanitarian and government response that is adapted to the specific preferences and vulnerabilities of the affected populations.
 - The assessment is conducted in complete coordination with UN agencies (notably UNICEF) and BNGRC. The assessment is being conducted jointly by UNICEF, MRCS and IFRC, with the leadership of BNGRC and the assessment methodology has been cross checked with the active sectors to the response.
 - **Areas:** The assessment is focused in the Atsinanana Region, in the districts of Toamasina 1 and 2I specifically. Primary data collection is covering the communes of: Ampasimadinika Manambolo, Toamasina Suburbaine, Ambodiriana and Amboditandroho in Toamasina 2 and Tanambao V, Ankirihiry, Morarano and Anjoma. Simultaneously, UNICEF teams are covering Antetezambaro, Ambodilazana, Toamasina Suburbaine and Fanandrana, all in Toamasina 2.
 - **Methods:** The assessment is three different types of primary data collection methods: Key Informants, Focus Group and Drone Imagery. To ensure a comprehensive understanding of the impact, the process involves triangulating the community-level data (focus groups and key informants) with the high-resolution drone imagery and satellite analysis.
 - **Drone Imagery:** The assessment utilizes an Area-Based Approach focusing on the Fokontany level. It utilizes drones to validate damaged zones and uses secondary data satellite imagery (Copernicus EMS) for large-scale coverage. The Drone imagery collected will be analysed by Humanitarian Open Street Map (HOT) using 4 levels (Destroyed, Damaged, partially damaged, no damage) and compared with Day+1 drone imagery collected by BNGRC, to assess the current damage and the evolution towards recovery.
 - **Key Informants Interview (KII):** A multisectoral questionnaire has been created and validated by all sectors and Kobo is used as the tool for data collection. Key Informants have been identified as: Mayors of commune, Fokontany Chiefs, school directors, health centre (CSB) heads, nutrition actors, merchants and leaders of women's and disability associations.
 - **Focus Groups Discussions (FGD):** A focus group multisectoral guide has been created and validated by all sectors, this guide serves as a reference during the focus group. Two focus group are organized per fokontany, one for women, one for men, as the groups are organized keeping PGI needs in mind, with the aim of capturing specific community needs.
 - After each focus group, a brief questionnaire has been created for volunteers to register their notes using Kobo as the tool.

- **Training:** On the 18th of March, 40 volunteers (16 from the MRCS and 24 from UNICEF) were trained on the sector agreed data collection tools.
- **Team Composition:** The MRCS has deployed two specialized teams, each team being composed as such: 1 NDRT, 2 volunteers for FGD women, 2 volunteers for FGD men, 2 volunteers for KII, 1 drone pilot, 1 volunteer Drone.
- **Results:**
 - **173** Key Informant Interviews (KII) have been conducted
 - **55** focus groups discussions have been held
 - **7** communes amounting to **38** Fokontany have been partially covered using drones
- **Analysis:** Preliminary analysis is currently being conducted jointly between the MRCS (Excel-based analysis) and UNICEF (MGMERL), with the results to be merged into a unified report and dashboard to align humanitarian and government response strategies.
- The IFRC has maintained some surge presence, including two rotations of Operations Managers (with the second rotation currently in-country following the end of the first mission in mid-March). Technical support has also been deployed in support of MRCS with a Cash and Voucher Assistance (CVA) Delegate, an Information Management (IM) Delegate, a Shelter Cluster IM, and Assessment Coordinators on the ground. An alert for a Procurement Officer has been launched.

Engagement with public authorities

MRCS, with the support of the IFRC, has scaled up its engagement with the public authorities. The coordination mechanism in Atsinanana Region has moved from a purely emergency phase to an early recovery phase. A Regional Coordinating Body was established in Toamasina focusing on the following objectives:

Pillar	Objective	Sector Group / Responsible Entities
AXIS 1	Increasing access to electricity and safe drinking water.	WASH Sector Group (JIRAMA, DREH, UNICEF)
AXIS 2	Increasing access to healthcare facilities.	HEALTH Sector Group (Ministry of Health, WHO)
AXIS 3	Increasing access to educational institutions.	EDUCATION Sector Group (DREN, DRETFP, University of Toamasina, UNICEF)
AXIS 4	Urban sanitation.	Urban Municipality of Toamasina/Tamatave
AXIS 5	Increasing access to public infrastructure (administrative buildings, markets, etc.).	DRATSF, Atsinanana Region
AXIS 6	Private sector.	GEM (Malagasy Business Group), Chamber of Commerce and Industry
AXIS 7	Humanitarian aid distribution and early recovery.	BNGRC; Sector Groups: SAMS, Nutrition, Protection, Logistics, Communication, Shelter and Settlement

BNGRC (National Disaster and Risk Management Office) maintains leadership over the intersectoral coordination and emergency response and reports daily to the new coordinating body. Humanitarian Country Team (HCT) meetings, which were initiated on 25th February 2026 and that validated a USD 67.8 million UN Flash Appeal and endorsed the activation of the Shelter/CCCM Cluster, continue with the next meeting planned for the week of March 23.

The request made by the Prime Minister office to the Red Cross to strengthen information management within the coordination architecture led to the development of a plan of action to conduct the multi-sectoral needs assessment. Details of the assessment are outlined in the previous section. The assessment will be finalized by mid-April and will include the presentation of a final report to the BNGRC and Membership partners.

Under the IFRC co-lead role for shelter cluster coordination, the IFRC continues its co-lead role for the Shelter/CCCM Cluster, focusing on technical support to improve accountability and visibility of needs. A Shelter Cluster IM Coordinator Surge has arrived in-country and has supported the Shelter Cluster Coordinator. Both colleagues have

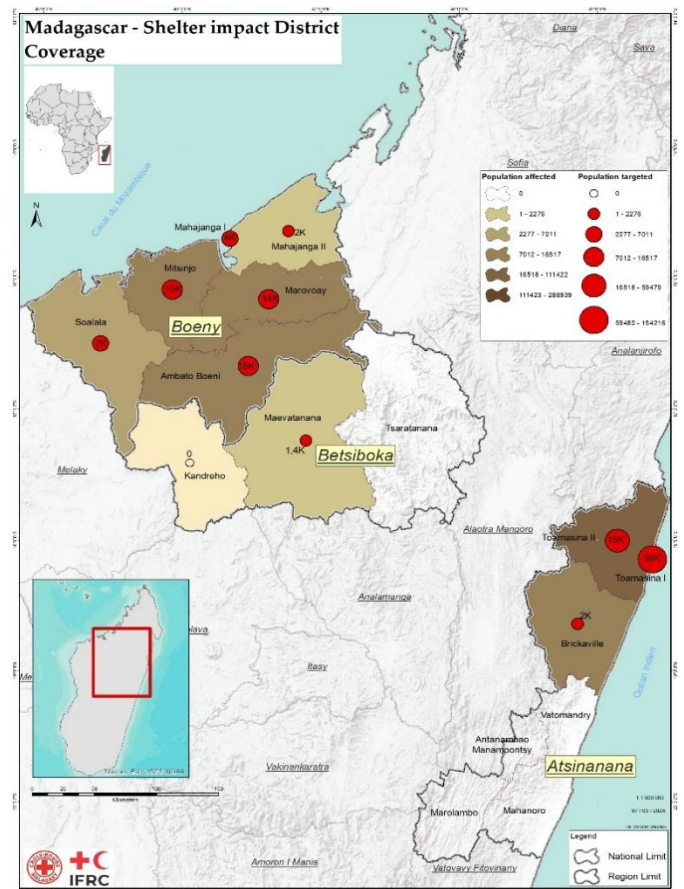
been spending significant time in Toamasina and with the coordination bodies. The priorities have been to assess the shelter needs on the ground and to consider adapting shelter responses to meet the context. As a result, the shelter cluster has made recommendations to actors on the minimum shelter kit compositions and are working with sector leads (notably the Cash Working Group) to assess possible adaptations to the cash for shelter support. The Shelter Cluster Coordinator has also been representing the Movement in the Protection Cluster, notably in assessing the needs of people housed in the 12 remaining communal shelters. 6 of those shelters are going to be closed soon as they are schools and will need to be reopened as such.

MRCs and IFRC continue their presence in the HCT. Furthermore, MRCs, with IFRC support, participates in all key coordination platforms, sectoral working groups, BNGRC-led multi-sectoral coordination meetings and strategic coordination convened by the Government, including the office of the Prime Minister. This participation ensures RCRC actions complement the wider humanitarian response.

Needs analysis

Shelter damage remains the most critical need following Cyclone Gezani, which devastated approximately 75 per cent of Toamasina City. As of the latest reporting, over 122,000 houses have been damaged or destroyed. While initial estimates identified 55,433 households in need, recent field assessments indicate that over 60,200 individuals remain displaced. Many families continue to stay with relatives or in partially damaged homes, while a significant portion remains in temporary accommodation centres. There is an urgent need to transition these families to alternative solutions to allow schools, which currently serve as shelters, to resume classes. Furthermore, the shortage of essential household items (EHI) remains acute, with an estimated 46,000 households still lacking the basic items required to restore minimum living conditions.

The Shelter Cluster Diagnostic Report issued on 19th March 2026 indicates that effective coverage for shelter needs remains low at only 3% of targeted households (1,640 households), while 13% (8,068 households) are in the pipeline for assistance. Interventions in Atsinanana remain heavily concentrated in Toamasina 2. However, the latest diagnostic confirms that several highly impacted communes have received no humanitarian assistance to date. Specifically, Ambodimanga (2,545 households affected) and Ankirihiry (19,019 households affected) remain entirely uncovered despite significant damage. Other communes without recorded interventions include Tanambao V, Anjoma, Toamasina Suburban, Sahambala, Brickaville, Fito, and Mahavelona (Foulpointe). In the Boeny region, assistance also remains extremely limited. The lack of an integrated response approach—where some communes are targeted only with cash and others only with kits—continues to leave significant gaps in the overall humanitarian effort.



The cyclones caused widespread agricultural and livelihood losses, particularly in rice-producing areas. Flooding destroyed or damaged more than 101,000 hectares of rice fields and cropland across Boeny and Alaotra-Mangoro, with crop losses reaching up to 70% in the hardest-hit Regions. These losses undermine both household income and national food production capacity. Market disruptions, damaged infrastructure, and suspended economic activities such as fishing and small businesses in Boeny and Atsinanana further reduce livelihood opportunities. Occurring

during Madagascar's lean season, the crisis has significantly increased food insecurity, leaving an estimated 1.3 million people in need of food assistance and increasing reliance on humanitarian support.

Water, Sanitation, and Hygiene (WASH) conditions have deteriorated significantly. Flooding contaminated water sources and damaged infrastructure, while Toamasina's water supply system collapsed due to cyclone damage and power outages. Approximately 60% of affected households require WASH support. As education resumed in late February 2026, many displaced families were required to vacate schools used as evacuation centres; however, in several locations, communities continued occupying school facilities at night due to the absence of viable shelter alternatives. These conditions prolong poor WASH standards and overcrowding in educational facilities, further affecting both education services and protection conditions. Access remains a critical challenge, particularly in the isolated communes of Fito and Satrandroy, where the lack of road access necessitates government-led helicopter operations to deliver life-saving WASH and relief supplies.

The overall situation is increasing the risk of waterborne diseases and malaria in a context where the health system is already under extreme pressure. At least 67 health facilities, including hospitals, were damaged or destroyed across the affected regions, severely reducing access to essential services. Health risks are further heightened by the ongoing Mpox outbreak, with cases reported in several affected regions, and the increased vulnerability of displaced populations living in spontaneous sites.

The Humanitarian Country Team (HCT) has highlighted heightened protection risks, particularly in Toamasina, where vulnerability and power imbalances increase the risk of sexual exploitation and abuse (SEA) in the context of large-scale displacement. Strengthening PSEA measures and activating the PSEA Task Force in Toamasina remain key priorities to ensure safe and accountable assistance delivery. Large-scale displacement and overcrowded living conditions have increased protection concerns, including gender-based violence and child protection risks such as family separation. Vulnerable groups, including persons with disabilities, older persons, and female-headed households, face additional barriers to accessing services. The scale of destruction and ongoing uncertainty during the cyclone season has also generated significant psychosocial distress, highlighting the urgent need for integrated mental health and psychosocial support.

Community engagement and accountability

Recent coordination discussions led by the BNGRC highlighted significant communication gaps between the response actors and affected communities following Cyclones Fytia and Gezani. Communities continue to express confusion regarding the level of available funding, the targeting criteria for assistance, and the timelines and modalities of distributions. This lack of clarity contributed to frustration in some areas, particularly in the most affected Regions such as Toamasina and Boeny, where expectations of assistance remain high.

At the same time, rumours and misinformation have been circulating widely within communities and on social media. These include speculation about the amount of funding received by the Government and humanitarian actors, perceived inequalities in the distribution of assistance, and misunderstandings about beneficiary selection processes. Without clear and harmonised communication, these rumours risk undermining trust in the response and affect community acceptance of humanitarian interventions. The response also revealed gaps in the coordination of communication between institutions and partners. Messages reaching communities are not always aligned, and communication coverage varies significantly between locations. In some areas, the absence of a common communication framework during emergencies has resulted in delays or inconsistencies in information sharing. Strengthening the alignment of key messages and improving coordination of communication channels across partners is therefore essential.

During the reporting period, there was no consolidated mechanism for all humanitarian actors to jointly track rumours, misinformation and community concerns across response areas. Although some feedback mechanisms exist, including the BNGRC hotline (930), MRCS hotline (616) and other feedback systems, the systematic collection, analysis and use of community feedback remain either delayed or limited. To address this, partners proposed the

development of a joint Kobo-based tool to centralise information on community outreach activities, track rumours and feedback, and strengthen reporting across organisations.

Operational risk assessment

For the first weeks of implementation, MRCS has been focusing on preventive measures for safeguarding, protection risks but also human resources safety and care and the operational risks linked to the planned distributions. Below are key updates on these main aspects:

- **Security:** The overall security situation has stabilized, with tensions and demonstrations reported in February 2026 now resolved. In March 2026, a major restructuring of the government was announced and a new Prime Minister and Cabinet appointed. At the same time the country experiencing a increase in commodities prices especially fuel as a impact of the ongoing conflict in Middle east. However, in Toamasina 1, more urban areas remain sensitive. Collected rumours, misinformation ad claims detailed under CEA analysis demonstrate that continuous gaps in assistance and un-resolved claims maintain some tensions.
- **Infrastructure and access:** Damage to markets, roads, and power networks persists, limiting recovery and service delivery. Access has been restored in most urban areas, though rural zones remain challenging due to distance and transport constraints.
- **Operational considerations for Shelter priorities:** Following the HCT discussions, the focus has shifted towards early recovery approaches, with an emphasis on resilient housing solutions using durable materials to support “build back better” outcomes. Therefore, the engagement is being done toward changing [standard kits and support](#) to reflect that.
- **The risk management** around human resources has also been a major consideration. Safety of the response team and volunteers has been put as high priority, both for physical and mental health, considering the high pressure and the impact to their own wellbeing following the cyclone. Mental Health and Psychosocial Support (MHPSS support is being organised for deployed volunteers through NDRTs and volunteers trained on MHPSS, ensuring regular messages on stress identification and management. Safety management is integrated into activity planning, considering access, transport, and delivery modalities that are in place for the hard-to-reach areas where assistance is currently delivered, as most partners focus on urban and peri-urban areas. This requires reinforced measures with adequate safety briefing as part of the activities planning and strong logistical arrangements. Volunteer insurance coverage has been completed for 300 volunteers. Further measures are being organised to ensure visibility, enhance the MHPSS, and rotation capacity to mitigate exhaustion.
- **Capacity:** In their auxiliary role, MRCS is supporting several ongoing actions, including those with other partners, in parallel with other program pre-cyclones and concurrent deadlines. This with the impact of the cyclone to many volunteers which impact their availability, the response overstretches both HQ and branches capacity and this materialized by the limited volunteers available Branch. The situation also stretches technical available profiles. High demand in Toamasina/Tamatave and Boeny is stretching technical leads across key sectors (WASH, Cash, Health, Shelter, IM), underscoring the need for reinforced capacity. The upcoming National Society General Assembly may also influence HR arrangements. IFRC is also trying to provide support through the deployment of surge roles to support the MRCS meet some of these gaps.

B. OPERATIONAL STRATEGY

Engagement continues with partners and sectoral working groups to integrate the priorities from HCT, especially for the shelter component which may change the shelter kits composition. Other than that, there are no changes to the initial [operational strategy](#).

C. DETAILED OPERATIONAL REPORT

STRATEGIC SECTORS OF INTERVENTION

	Shelter, Housing and Settlements	Female > 18: 4,493	Female < 18: 4,083
		Male > 18: 3,817	Male < 18: 4,047

Objective	<i>Communities in disaster and crisis affected areas restore and strengthen their safety, wellbeing and longer-term recovery through shelter and settlement solutions</i>
-----------	---

Key indicators:	Key indicators	Actual	Target
	# of households receiving cash for shelter or shelter kits as their housing solution (9,000)	0	9,000
	# of households benefiting from EHI (9,000)	2,481	9,000
	% of assisted households reporting access to safe and adequate shelter following shelter assistance (90%)	0	90%
	% of cash-for-shelter households that used assistance for intended housing repairs (80%)	0	80%
	% of assisted households applying safer construction techniques with the support of the MRCS and trained carpenters through BBB (70%)	0	70%
	# of temporary sites meeting minimum Sphere standards (7)	0	7

Key progress to date:

For every 2,481 households reached, there are a total of 16,440 household members

The following Emergency Household Item (EHI) have been conducted:

- ✓ 1,481 Shelter Kits distributed: 750 households in Mitsinjo (Boeny Region) reached between 23 February and 12 March 2026. 731 households in Madirovalo (Boeny Region) reached between 23 February and 10 March 2026.
- ✓ 1,485 Kitchen Sets distributed: 750 households in Mitsinjo (Boeny Region) reached between 23 February and 12 March 2026. 735 households in Ambato Boeny (Boeny Region) reached between 23 February and 10 March 2026.
- ✓ French Red Cross, through the PIROI office, has sent 2,250 shelter kits with 4,500 tarpaulins. The material has arrived in Toamasina and is planned for distribution in Toamasina Suburbaine. Beneficiary targeting and registration is on-going.

Through the support of FCDO CM, 993 shelter kits and 993 kitchen kits were distributed under the FCDO CM in the rural commune of Amboditandroho in Atsinanana District complement to the multi-purpose cash distributions in the same area.

To support a timely response, to cover operational gaps and reduce procurement delays, Membership efforts have focused on mobilizing pre-positioned stocks, particularly those within CRM warehouses, and much of which is

supported by PIROI. The DREF and FCDO supported CM are in process of working with PIROI for the restocking of the material.

Under IFRC's lead role in shelter cluster coordination, technical support continues to strengthen information flow, improve accountability, and ensure visibility of needs and mobilised resources. The IM surge is providing support to the delegation and the MRCS to improve the existing set-up.

An assessment of the damages to MRCS Atsinanana Branch premises was done by the Luxembourg Red Cross. The findings will allow for the rehabilitation of the premises, which are largely expected to be covered by the Luxembourg Red Cross.

- Discussions are currently underway within the Shelter Sector Working Group to re-evaluate the conditional cash for shelter transfer amount, especially noting that the value amount was established three years ago.



Relief kits distributions in affected Fokontany of Toamasina. [Photo credit: IFRC/MRCS.]



Livelihoods

Female > 18: Female < 18:

Male > 18: Male < 18:

Objective: <i>Communities, especially in disaster and crisis affected areas, restore and strengthen their livelihoods</i>			
Key indicators	Indicator	Actual	Target
	# of families assisted with cash for income-generating activities	0	3,000
	% of families supported with cash for income-generating activities that have relaunched their income	0	70%
	# of districts with community financial literacy initiatives that were supported to become operationalised	0	3
	# of households engaged on VSLA groups that were reactivated or supported	0	3,000
	% of supported households for financial literacy activities and income-generating sessions/VSLA reporting restoration of at least one income source	0	70%

No progress to date and funding situation doesn't currently allow for Secretariat support to this sector. However, German Red Cross bilateral funding focuses on this sector, and the ongoing multi-sectoral assessment will better inform on implementation.



Multi-purpose Cash

Female > 18: 2,419

Female < 18: 1,828

Male > 18: 2,202

Male < 18: 1,833

Objective:

Households are provided with unconditional/multipurpose cash grants to address their basic needs

Key indicators:	Indicator	Actual	Target
	# of households receiving MPCA	1,996	9,000
	% of households meeting basic food needs after cash support	0	80%
	% of households reporting the ability to prioritise their needs with dignity	0	80%
	% of households reporting reduced negative coping strategies	0	80%

- For those 1996 households reached, there are a total of 8,282 household members
- 1,996 households in the commune of Amboditandroho in Toamasina 2 received multi-purpose cash grants. Two tranches of 140,000 AR (total 280,000 AR) were distributed. Considerations are being made for a third transfer through support of the appeal. This will ensure alignment with other actors and the Cash Working Group recommendation.
- Identification of an additional 2,000 households in Toamasina 1 is ongoing. These households will also receive three instalments of 140,000 AR each, with the first payment scheduled for April.
- MRCS is closely coordinating with Cash cluster and BNGRC to ensure a coordinated response. This is quite a challenge, as the areas being targeted by MRCS also have other actors. As such, MRCS and the actors are coordinating to reduce any risks of overlap.



Multi-purpose cash distributions in affected Fokontany of Toamasina [Photo credit: IFRC/MRCS.]



Health & Care

(Mental Health and psychosocial support / Community Health / Medical Services)

Female > 18:

Female < 18:

Male > 18:

Male < 18:

Objective:

Strengthening holistic individual and community health of the population impacted through community level interventions and health system strengthening

Key indicators:	Indicator	Actual	Target
	% of the target population with improved access to basic health services	0	45,000
	% of people reporting improved psychosocial well-being through PSS and improved health services/access	0	80%

% of health facilities functional post-intervention	0	7
---	---	---

- 2,250 Mosquito nets are provided through PIROI and are planned for distribution in complement of the shelter kits in Toamasina Suburbaine. Current beneficiary targeting and registration is on-going, and distribution is planned for early April. Secretariat support through the appeal will cover distribution costs and messaging conducted along with the distributions.
- Procurement of additional mosquito nets are planned in the operation.
- The Luxembourg Red Cross and MRCS conducted a detailed assessment technical between February 24 – March 4 of 7 primary health centres across Toamasina 1 and 2. The assessment focused on structural damage, aiming to provide detailed cost estimates for rehabilitation and ensure the rapid restoration of essential health services for the affected communities. The findings of the report can guide planned the Federation-wide interventions of the MRCS supported by the Luxembourg Red Cross bilaterally to rehabilitate these infrastructures. The Secretariat plans do not include rehabilitation of health centres as part of it operating budget, but rather community health support through the distribution of health material and messaging. Plans also include trainings to MRCS in FA and PSS.
- BNGRC has requested of IFRC and MRCS to support the electricity company JIRAMA with first aid kits and trainings. 50 MRCS first aid kits have been donated to JIRAMA, and plans are underway for MRCS to provide first aid trainings to JIRAMA employees in Toamasina.

Indicator update: As the operation advances, the following changes to the indicators are envisioned:

- # of people with improved access to health services
- # of staff and volunteers trained in First Aid and Psychological First Aid.
- % of health facilities functional post intervention.

 Water, Sanitation and Hygiene	Female > 18: 4,140	Female < 18: 3,798
	Male > 18: 3,516	Male < 18: 3,762

Objective: *Ensure safe drinking water, proper sanitation, and adequate hygiene awareness of the communities during relief and recovery phases of the Emergency Operation, through community and organizational interventions*

	Indicator	Actual	Target
Key indicators:	# of families benefiting from WASH services (9,000)	0	9,000
	# of households receiving WASH kits (9,000)	2,500	9,000
	# of WASH facilities restored and disinfected at the community level for water access and sanitation (25)	0	25
	# of households with access to safe drinking water (9,000)	0	9,000
	% of households practicing appropriate hygiene behaviours (70%)	0	70%
	% reduction in reported water-related disease cases in target areas	0	30%

- Distributions of WASH kits that include 1 bucket, 2 jerricans, bars of soap, Water treatment sirup were distributed in collaboration with the distribution of the Essential Household kits outlined in the Shelter section.
- Promotion of good practices was conducted prior to each distribution and posters were put up in the communities for added information.
- The following WASH kit distributions and messaging were conducted during the reporting period:
 - ✓ 1,500 households were supported with WASH kits in Boeny Region (750 in Mitsinjo, 750 in Ambato Boeny Districts).
 - ✓ 1,000 households were supported with WASH kits in Amboditandroho commune of Atsinanana Region.
- The WASH Surge alert was stood down as the response funding doesn't currently allow for a detailed focus on hard WASH activities.



Protection, Gender and Inclusion

Female > 18: 2,500

Female < 18: 0

Male > 18: 0

Male < 18: 0

Objective:

Communities identify the needs of the most at risk and particularly disadvantaged and marginalized groups, due to inequality, discrimination and other non-respect of their human rights and address their distinct needs

	Indicator	Actual	Target
Key indicators:	# of targeted families with women and girls at reproductive age receiving dignity kits	2,500	9,000
	% of the assisted population reporting safe and equitable access to services	0	70%
	% of protection complaints appropriately referred and addressed	0	100%
	% of women, children, and persons with disabilities meaningfully accessing assistance	0	50%

- Distributions done included dignity kits to 2,500 women and girls in reproductive age. Key messages on the use of dignity kits were provided prior to the distributions and CEA committee are also facilitating group discussions.
- The following kit distributions and messaging were conducted during the reporting period:
 - Over 1,500 women and girls were targeted with messaging and at least 1,500 women and girls received dignity kits in Boeny Region (750 in Mitsinjo, 750 in Ambato Boeny Districts).
 - Over 1,000 women and girls were targeted with messaging and 1,000 women and girls received dignity kits in Amboditandroho commune of Atsinanana Region.
- 100 MRCS volunteers from Atsinanana Branch and 80 volunteers in Boeny Branch received PGI on March 12. The training also ensures compliance with safeguarding, Code of Conduct, and PSEAH risk management.
- The assessment conducted in collaboration between Luxembourg Red Cross and MRCS (noted in the shelter section) also focused on damages to school infrastructures. The objective of the assessment from a protection perspective to schools is to address the severe disruption of educational services. 13 damaged educational facilities were assessed, including 9 primary schools, 3 lower secondary schools, and 1 high school in

Toamasina. Detailed technical bills of quantities are being developed for these sites to guide reconstruction efforts and facilitate the safe return of students to permanent classrooms. These actions, that are planned as part of the Luxembourg Red Cross bilateral support will result in reducing the prolonged reliance on schools as collective centres.

- The Shelter Cluster Coordinator has been representing the Movement in the Protection Cluster, notably in assessing the needs of people housed in the 12 remaining communal shelters. 6 of those shelters are schools and are being prioritized to be evacuated and reopened.

	Risk Reduction, climate adaptation and Recovery	Female > 18: 0	Female < 18: 0
		Male > 18: 0	Male < 18: 0

Objective: *Communities in high-risk areas are prepared for and able to respond to disaster*

Key indicators:	Indicator	Actual	Target
	% of communities demonstrating improved knowledge of early warning actions	0	3
	% of branches with updated and operational contingency plans	0	3
	% of communities Fokontany initiating local preparedness actions	0	9

The funding situation of the Emergency Appeal doesn't currently allow for Secretariat support to this sector. Furthermore, the current coordination body's current focus is on improving access of basic services in Toamasina. Meanwhile, HCT decisions and the ongoing multi-sectoral needs assessment may be a good tool to guide integrated strategies addressing barriers to durable solutions, reflecting community preferences, and informing recovery interventions to this sector.

Enabling approaches

	National Society Strengthening		
---	---------------------------------------	--	--

Objective: *Communities in high-risk areas are prepared for and able to respond to disaster*

Key indicators	Indicator	Actual	Target
	# of branches supported with infrastructure upgrades	0	2
	# of NDRTs trained or deployed	5	20
	# of contingency plan developed or updated following this intervention with completed simulation exercises conducted (4)	0	5

% of branches meeting minimum disaster preparedness standards	0	5
% improvement in reporting timeliness and quality	0	50%
% increase in branch operational readiness score	0	30%

- Insurance to 400 volunteers MRCS have been provided through the appeal to date.
- Further support, notably to volunteers, is planned in the operation. This support includes increasing volunteer and staff visibility items and PPEs.
- Discussions are also underway with the Luxembourg Red Cross on a possible joint rehabilitation of MRCS branch office that has been impacted by the cyclones. Assessment of the needed work has been done by Luxembourg Red Cross and MRCS and a final bill of quantities is being finalized.
- The focus of the deployed Surge Team and PNS support is and continues to focus on knowledge transfer and NS support. Sectoral support, notably in operational planning, shelter-cluster coordination and in transfer of knowledge through the multi-sectoral assessment are outlined in other sections.
- CRM and IFRC have also collaborated to ensure strong communication, visibility and the promotion of Humanitarian Diplomacy. Details of that is outlined in the Secretariat Support Section. https://shared.ifrc.org/record/_1LIW76jtymWpSkIWlylMI0IKhttps://shared.ifrc.org/collections/~4b269407b1https://shared.ifrc.org/collections/~c389ec8fa1https://shared.ifrc.org/collections/_1PZYNw3Zhttps://ifrcorg.sharepoint.com/:v:/s/IOIClusterDelegation-Files/IQC9ZQD-hYLYRKdRBoMbwuy_AVy3u5ZyajjmxQmG7dRkXbE?e=CCgRzPhhttps://shared.ifrc.org/collections/_9GXnrPyhttps://www.facebook.com/100064689369492/posts/1372923371540629/?mibextid=rS40aB7S9Ucbxw6vhttps://youtu.be/1G61hSsUoXg?si=EXaQUCee8BZ3uYid



Coordination and Partnerships

Objective: *Communities in high-risk areas are prepared for and able to respond to disaster*

	Indicator	Actual	Target
Key indicators	# of coordination meetings attended or led	30	TBC
	# of joint assessments and evaluation or reviews conducted	1	3
	# of partnership agreements formalised	0	
	% of RCRC partner interventions aligned with national response plans	100%	100%

Progress to date:

- The Red Cross Red Crescent network participates in national and sub-national coordination mechanisms, contributing to sectoral working groups (Cash, Health, WASH, Logistics, PGI, Shelter) and co-leading the Shelter Working Group in line with IFRC's global mandate.
- The MRCS operation under the Emergency Appeal is aligned with the cluster system and harmonized with BNGRC priorities, ensuring complementarity and coherence with the broader humanitarian response.
- Membership coordination meetings are held on weekly basis to ensure information sharing, align priorities and implementation.



Secretariat services

Objective: *Communities in high-risk areas are prepared for and able to respond to disaster*

Key indicators	Indicator	Actual	Target
	% of appeal funding mobilised against the target	22%	100%
	% of operations meeting IFRC quality and compliance standards	100%	100%
	% of identified risks mitigated through agreed actions	80%	80%

Surge deployments as below:

RR Profile	Rotation	NS	Status
Operation manager	1	IFRC	EOM March 13
Operation manager	2	Canadian RC	In country
CVA Coordinator	1	Belgian RC	In country
IM Coordinator	1	IFRC	In country
IM Shelter Cluster Coordinator	1	Netherlands RC	In country
Assessment coordinator	1	French Red Cross (PIROI)	In country
Procurement Officer	1	Burundi RC	Identified
PIROI Relief Delegate		PIROI - Bilateral	In country

- Support to MRCS in its Shelter Cluster lead role, ensuring a coordinated, standards-based and gap-driven response aligned with national authorities, with strengthened coordination, IM support is on-going.
- The IFRC Secretariat IM Lead conducted a targeted support mission to Madagascar to strengthen assessment coordination, analysis, and strategic framing of the cyclone response. The mission provided technical support to inform designing and implementation of the joint multi-sectoral needs assessment outlined in previous sections.
- IFRC and in-country Partner National Societies support MRCS with technical, financial, and in-kind contributions based on their expertise. Coordination follows the Ways of Working approach, using established platforms to ensure a unified response, joint planning, and effective information sharing.
- Capacity strengthening of local volunteers through training and guidance to support communication activities, including collecting photos, videos and community testimonies from the field.

Communication:

Coordinated efforts supported visibility, advocacy, and resource mobilization before and after the cyclone's landfall. Joint communication with MRCS highlighted forecasts, anticipatory actions, the humanitarian impact, and the overall response, while promoting the Emergency Appeal. The following outline the main achievements:

- [Key messages](#) disseminated through IFRC Newswire highlighting forecasts, anticipatory actions, humanitarian impacts and the Red Cross Red Crescent response, while promoting the Emergency Appeal – updated as relevant.
- Visual documentation of key interventions (photos, videos, testimonies) capturing Red Cross action from [anticipatory measures](#) to [post-landfall response](#) and relief distribution (photos of [emergency kits](#), [video of emergency kits distribution](#), [photos of cash distribution](#))

- Media engagement and coverage at [national](#) and [international](#) levels to raise awareness of humanitarian needs and the response.
- Active social media engagement across IFRC global, regional and management team platforms (X, Instagram, Facebook, LinkedIn) to amplify key messages and response updates.
- Targeted outreach to donors and partners to support advocacy and resource mobilization, including the sharing of audiovisual materials and response updates to strengthen visibility and strategic partnerships. This includes the production and dissemination of a one-pager shared with in-country potential donors during meetings to support advocacy and resource mobilization.

Strategic Partnerships and Resource Mobilisation (SPRM)

Strategic Partnerships and Resource Mobilisation efforts for the Madagascar Cyclones appeal have focused on positioning the response for both immediate and longer-term support and have secured CHF 1,542,608 or 29% Federation-wide coverage. A dedicated resource mobilisation strategy has been developed to guide donor engagement across phases of the operation.

To underpin this, the Head of Strategic Partnerships and Resource Mobilisation was deployed to Madagascar for two weeks to support in-country donor outreach, including meetings with the Embassies of the United States and Türkiye, as well as the African Development Bank, the World Bank, ECHO, and in-country Partner National Societies. While most external partners had already allocated their initial emergency funding, discussions identified opportunities to support recovery activities, future cyclone responses, and longer-term climate resilience programming. High-level engagement with the Prime Minister of Madagascar further positioned the Red Cross as a key partner in the response, while a meeting with the Indian Ocean Commission resulted in a draft joint action plan to operationalise the recently signed Memorandum of Understanding. In parallel, continued engagement is underway with Partner National Societies and other strategic partners outside of Madagascar to mobilise support and strengthen partnerships for ongoing and future preparedness and response efforts.

Supply Chain

- The mobilisation table has been finalized.
- Stocks under negotiation: With procurement requiring ~3 months lead time, all in-country stocks are being utilised and will be replenished through appeal funding. Rapid availability of kits relies on pre-positioned items to ensure timely assistance.
- PIROI: Limited capacity with current country stocks.
- CRM: Confirmed combined capacity for at least 1,000 households, though full picture remains unclear.
- Warehousing: Capacity is stretched; temporary storage arranged with PIROI, WFP, and district public structures provided by local authorities.
- Confirmed donations: PIROI awaiting customs clearance for 2,250 shelter tool kits and 4,500 tarpaulins (1,500 household items already arrived on 24/02/2026). These will be linked to the appeal via the mobilisation table.
- Procurement responsibilities: MRCS to procure dignity kits; IFRC to procure shelter kits, tarpaulins, and WASH kits.

Humanitarian Diplomacy

Positioning of the IFRC and the MRCS, and strengthening engagement with public authorities, reinforcing the auxiliary role of the National Society, and ensuring alignment of the response with government priorities and coordination mechanisms has been central to the operation. The following are some of the key achievements:

- High-level engagement with national authorities supported dialogue on the humanitarian situation, cooperation on Tropical Cyclone Gezani, and the auxiliary role of the MRCS.
- Follow-up engagement in country enabled continued dialogue with government counterparts on operational challenges, response activities and future collaboration on preparedness and resilience.

- Coordination with public authorities and participation in coordination mechanisms ensured the response remained aligned with national priorities and integrated within government-led coordination mechanisms.
- Supporting those coordination roles through the multi-sectoral assessment.
- Strengthening partnerships with authorities and humanitarian actors helped advance discussions on emergency funding mechanisms and reinforced collaboration with government and UN partners.
- High level meetings with potential donors, including World Bank, African Bank for Development and diplomatic missions, supported by the distribution of printed summaries outlining the response to date.



Drone picture taken by MRCS/IFRC Assessment team to affected area of Toamasina Suburbaine. [Photo credit: MRCS.]



Community Engagement and Accountability

Objective: *Communities in high-risk areas are prepared for and able to respond to disaster*

	Indicator	Actual	Target
Key indicators	% of community members aware of selection criteria and complaint mechanisms	0	100
	% of feedback responded to within agreed timeframe – max. 7 days	0	100
	% of population expressing satisfaction with assistance process	0	80%

100 MRCS volunteers from Atsinanana Branch received CEA training on March 12. These trainings are based on capacities gained under the PIROI project (July 2025). The NDRTs conducted the cascade CEA briefings to volunteers currently engaged in supporting the appeal. Briefing content ensures they understand how to share clear information which was reinforced by feedback collected so far from the communities, collect and escalate community feedback, and uphold safeguarding, PGI, and accountability principles in all interactions.

CEA committees are established systematically in the targeted villages to facilitate feedback collection for both literate and non-literate individuals. Posters with MRCS hotline number is posted and disseminated among the villages/fokontany and within the CEA committees. A feedback box is set-up during each distribution. The feedback mechanism is outsourced to an NGO that provides regular feedback to MRCS and conducts evaluations (as needed). Further support to strengthen the MRCS CEA activities has been noted and is being further explored by the IFRC Surge Teams on the ground.



D. FUNDING

To date, this Emergency Appeal, which seeks CHF 7,500,000 (Federation-wide) is 29% percent funded. The Secretariat coverage of the appeal (CHF 5,000,000) is at 31%, with a total of CHF 1,542,608 provided through hard/soft pledges, and in-kind support.

Multi-lateral contributions to date:

- DREF Grant 1,000,000 CHF
- Soft pledges totalling 542,608 CHF from the following partners:
 - Canadian Red Cross
 - Japanese Red Cross
 - Red Cross of Monaco
 - Netherlands RC
 - American Red Cross

Support (bilateral) to the Federation Wide Appeal to date:

- British RC FCDO Crisis modifier: 143,000 CHF and in-kind support (totalling 130,167 CHF)
- German RC: CHF 90,713 from German Embassy
- French RC (PIROI): 180,000 EUR in in-kind material.
- Luxembourg RC: Concept note submitted to European Union for 1 million EUR focusing on rehabilitation to damaged schools and healthcare centers in Toamasina.

Donor/partner interest and engagements include:

- Hong Kong RC is facilitating interest from Hong Kong government in supporting with CHF 300,000 earmarked towards emergency kits. Proposal has been submitted and discussions are underway.
- Internal: ongoing advocacy with PNS at regional level to mobilise additional support
- External: donor outreach ongoing, including African Development Bank, World Bank, US embassy, Turkish embassy in Antananarivo



Contact information

For further information specifically related to this operation, please contact:

At the Malagasy Red Cross Society:

- **Secretary General** (Acting): Dr. Heremana H Edison; phone: +261 32 12 729 61 / +261 38 63 130 99, email: coordo_sante@crmada.org
- **Operational Coordination:** Rabaritsimba Miyo; phone: +261 34 68 227 44, email: coordo_grc@crmada.org

At the IFRC:

- **IFRC Country Delegation (a.i):** Papa Moussa Tall; phone: +254727911975, email: papemoussa.tall@ifrc.org
- **IFRC Regional Office for DCC coordination:** Rui Alberto Oliveira; Manager, Preparedness and Response, Africa, Disaster and Climate Crises (DCC), email: rui.oliveira@ifrc.org
- **IFRC Geneva:** Emma Genest, Senior Officer, Operations Coordination; email: emma.genest@ifrc.org

For IFRC Resource Mobilisation and Pledges support:

- **IFRC Regional Office for Africa:** Louise Daintrey, Regional Head, Strategic Partnerships and Resource Mobilisation; phone: +254 110 843978, email: louise.daintrey@ifrc.org

For In-Kind donations and Mobilisation table support:

- **Supply Chain Management Unit, Africa :** Carren Oyayo, Senior Officer, Procurement; email: carren.oyayo@ifrc.org

For Performance and Accountability support (Planning, Monitoring, Evaluation, and Reporting):

- IFRC Africa Regional Office: Beatrice Okeyo, Head of PMER & QA, email: beatrice.okeyo@ifrc.org

Reference

Click [here](#) for:

- Previous Appeals and updates

How we work

All IFRC assistance seeks to adhere the **Code of Conduct** for the International Red Cross and Red Crescent Movement and Non-Governmental Organizations (NGOs) in Disaster Relief, the **Humanitarian Charter and Minimum Standards in Humanitarian Response (Sphere)** in delivering assistance to the most vulnerable, to **Principles of Humanitarian Action** and **IFRC policies and procedures**. The IFRC's vision is to inspire, encourage, facilitate and promote at all times all forms of humanitarian activities by National Societies, with a view to preventing and alleviating human suffering, and thereby contributing to the maintenance and promotion of human dignity and peace in the world.