

OPERATION UPDATE

Ethiopia | Landslides and Floods Emergency Appeal



Figure1: ERCS staff visiting families at the newly constructed shelters allocated to families affected by the 2024 landslide in Gofa. Photo credit, ERCS zonal branch

Emergency appeal №: MDRET036 Emergency appeal launched: 30/07/2024 Operational Strategy published: 03/07/2025	Glide №: LS-2024-000125-ETH
Operation updates #3 Date of issue: 16/12/2025	Timeframe covered by this update: From 31/07/2024 to 12/12/2025
Operation timeframe: 20 months (31/07/2024 to 31/03/2026)	Number of people assisted: 60,440
Funding requirements (CHF): CHF 6 million Federation Wide and CHF 3.5 million through the IFRC Secretariat	DREF amount initially allocated: CHF 1m

The Emergency Appeal for Ethiopia Landslides and Floods sought CHF 3.5 million and received CHF 2.6 million in funding, including a CHF 1 million DREF loan. To date, CHF 2.33 million has been utilized, leaving a balance of CHF 0.27million. The Ethiopia Landslides and Floods Operation (MDRET036) strategy remains unchanged, with the National Society transitioning from emergency response to recovery in the most affected regions—Oromia, Central, and Southern Ethiopia. The Ethiopia Red Cross is requesting a three-month no-cost extension, from 31 December 2025 to 31 March 2026, to complete remaining activities. These include finalizing shelter construction and handovers in Silte Zone Wolayta zone, documenting youth livelihood activities success stories, and conducting post-distribution monitoring (PDM) for cash assistance. Additional priorities are sustaining basic PSS, installing water tanks, expanding hygiene promotion, and

establishing a child-friendly space in Gofa Zone. Recovery efforts will also focus on tree planting, supporting EVCA plans, procuring drones, and training operators. Finally, the branch office construction in Gofa Zone will be completed. This extension will ensure all activities are finalized, promote sustainability, and allow for proper closure of the operation.

A. SITUATION ANALYSIS

Description of the crisis

Since July 2024, heavy rains, landslides, and flooding in Ethiopia affected over 500,000 people across 14 zones, displacing more than 140,000 and claimed lives of about 420 people across the 7 regions. Oromia, Sidama, Amhara, Tigray, Gambella, Central, Southwestern and Southern regions suffered severe damage, with more than 8,659 hectares of cropland lost, 113 livestock dead, and 277 houses destroyed. Gofa, Desnech Woreda, Omorate Town, and multiple zones were identified at high risk of landslide, forcing the relocation of communities to a newer identified area. Since then, ERCS and other humanitarian actors have been actively providing humanitarian support to the affected people. ERCS with the support from IFRC launched an appeal, [Ethiopia - Landslides and Floods \(MDRET036\)](#); with the funding ask of 6 million preceded with an operation update [Ethiopia - Landslides and Floods \(MDRET036\)](#) to increase scope, scale and time of operation from 1 year to 18 months.

The response is designed to support the affected communities with transitional shelter and household materials, food security and livelihood recovery through multipurpose cash transfer (MPCT), farm inputs, WASH, health and skill training for youth, strengthening community disaster risk reduction while mainstreaming protection, gender and inclusion and ensuring communities have full ownership of the program for sustainability.

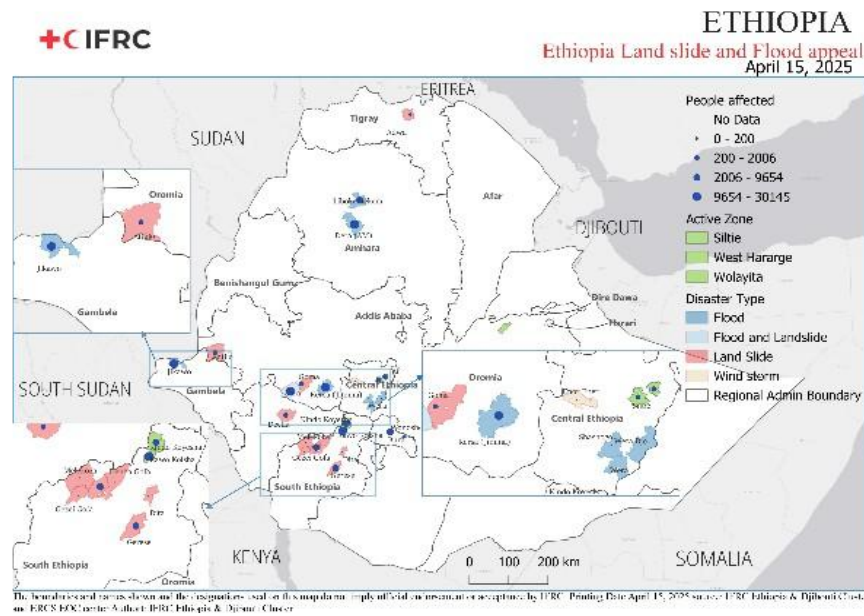
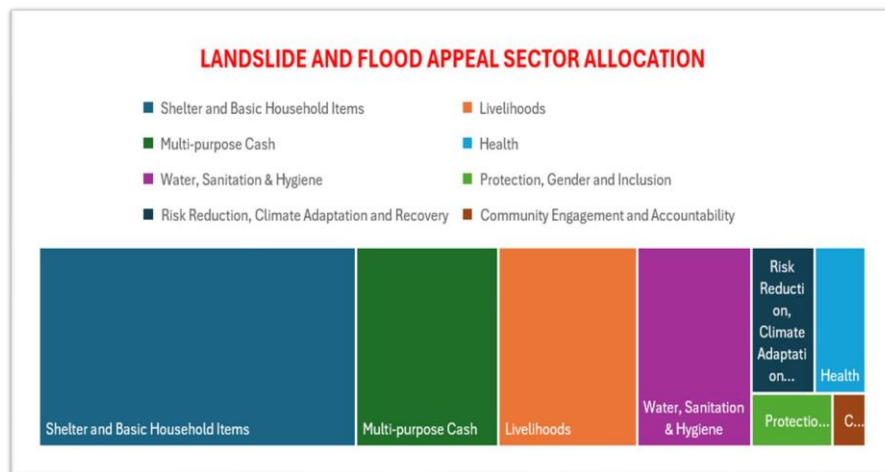


Figure 2: Ethiopian Map to showing land slide and flood affected areas and areas of interventions

Summary of response

The appeal program has used multi sectoral approach to reach the landslide and flood affected communities in 7 regions, and then providing support to three regions such as Oromia, Southern and Central Ethiopia by more focusing on hardest hit regions with high number of people affected, less response provided and non-governmental actors are poorly supporting the affected communities.

The project has supported a total of 60,440 people out of the planned 55,712 people through provision of temporary shelter, emergency shelter and essential house hold items, multi-purpose cash support for three rounds to support basic needs and early recovery, seed and fertilizer provision to recover their livelihoods, and WASH intervention support through construction of water points and made available to their villages to mitigate the health risks and avoid disease spreading.



ERCS was a first responder and able to reach the community through emergency shelter items provision using its own stock at first, and able to reach the communities through project supported by IFRC, GRC, Church of Jesus Christ later day's saints and Coca cola foundation.

Currently the Appeal is 45% funded enabling the NS to respond to community needs by replenishing the HH shelter items, Emergency and transition shelter, Emergency Food security and livelihood, and Health, MHPSS, WASH, MPCT, DRR, PGI, CEA and the national society DRR capacity strengthening. Through its branches, ERCS mobilized staff, volunteers and affected communities in responding to the impacts of floods and landslides in different locations.

Region	Total people reached			People reached per sector					
	M	F	Total	Shelter & HH items	FS/LL	MPCT	Health	WASH	PGI/ CEA
Southern Region	14,724	14,837	29,561	25,295	5,990	6,175	6,260	11,130	2,875
Oromia	2,365	2,035	4,400	2,500	-	1,900		2,500	
Amhara	2,205	2,295	4,500	4,500	4,500	-	4,500	4,500	
Central Ethiopia	12,135	9,354	21,489	3650	3,000	2,600	17,839	1,175	3,650
Southwest Ethiopia	245	255	500	500	-	-		500	
Total	31,674	28,776	60,470	36,445	13,490	10,675	28,599	19,805	6,525

Shelter

Since the disaster occurrence, ERCS has reached a total of 31,500 people (6,300HH) through provision of emergency shelter materials like tarpaulin, blankets and sleeping mats with household items (kitchen sets) and provision of temporary shelters for more vulnerable groups and displaced peoples in Southern, Central, Southwest and Oromia regions. ERCS constructed 296 temporary shelters with latrine (210 with support of IFRC and 86 are support of IFRC and The Church of Jesus Christ later day's saints) in Gofa zone of southern Ethiopia region and given to the displaced and most vulnerable community members in a formal handover event where different community groups, government officials' stakeholders and NGOs participated.

Currently, 42 temporary shelters are under construction at Silte zone of central Ethiopia. The structures and roofing are completed, currently the shelter plastering, masonry work and finishing work are underway.

The approach deployed involved industrial materials procurement at HQ and local materials at regional branch level, and construction was contracted to local construction companies, with support from ERCS HQ logistics, and approved by IFRC regional logistics. The other 68 shelters for displaced relocated households in Wolayta are in the construction stage, where the construction planned to end in February 2026.

The construction has engaged community members, led by community construction committees and trained volunteers who were deployed to support supervision and quality assurance. 1 shelter engineer was recruited and engaged since the beginning, and 1 shelter surge was deployed for 3 months fully funded by German RC. The surge played an important role in supporting site assessment, landscaping, quality review, and developing bill of quantities (BOQ). The community established a construction committee to verify quantity of local material delivery on site, participating 3 days per week, to support material movement and any required labour work.

The construction in Gofa faced several challenges, including unforeseen cost for material movement from the main warehouse provided by Government to on-site warehouse where the big trucks could not reach, thus the branch had to hire small trucks capable of going up-hill. The area has no passable roads to all the construction areas; thus, casual labour was required to move materials closer to the site, which had not been factored.

SN	LOCATION	ERCS	GOVERNMENT	INGO	Total	Estimated ppl reached
1	Gofa	296	110	80	486	2,430
2	Wolayta	68	100	0	168	840
3	Silte	42	0	0	42	210
	Total	406	210	80	696	3,270

Food Security and Livelihoods

It was clear from the assessment conducted by Government, ERCS and UN agencies that the affected communities were predisposed to food insecurity due to displacement and damaged livelihoods sources. Most of the affected population depended on small-scale farming and damage to their planted crops and their farms; these families would be exposed to food insecurity. This has deprived the affected population of their main source of food and income, especially displaced HH living in temporary shelters or relocated to new living sites. ERCS scaled up the planned interventions under food security and livelihoods, to the 29,690 affected people with emergency food. However, nutritional supplements to malnourished children were provided by other IPs.

ERCS with IFRC and bilateral support from GRC and Coca-Cola foundation supported 627 (MHH 458 & FHH 169) relocated families with the multipurpose cash for 3 rounds (2 GRC and 1 Coca cola foundation) in Gofa zone. 1,900 HHs for three rounds of MPC in west Harage zone of Oromia, Silte zone of central and Wolayta zone of south Ethiopia. The Gofa support was complemented by the first round provided by SNN, a local NGO.

2 post distribution monitoring (PDM) were conducted in Gofa zone, and 1 PDM assessment at west Hararge, Silte and Wolayta zones. However, one PDM was not conducted due to late distribution of MPC in these targeted zones. All cash support has been well coordinated by the government, under the incident command point.

ERCS has provided farm inputs comprising of improved seeds (maize and haricot bean) and fertilizers (DAP and UREA)

procured and distributed to 2,727 households in Silte, west Harage and Wolayta zones. A total of 30 (25M & 5F) volunteers and community members were trained to conduct mentorship to affected HHs and supported the communities to diversify their livelihood options and regain their livelihoods.

Basic business skill development training was provided for 50 youth (M=25 F=25) and all trainees are provided with a starter kit of 30,000 birr to revive their livelihood and strengthen their income.

Health

ERCS participated in the search and rescue in landslide and flood affected communities, a total of 4,658 people were rescued from incidences in all regions and 280 supported in safe and dignified burial. Based on the assessment conducted at community level and gaps identified in the sector, ERCS has been working on health intervention through provision of training, engaging volunteers to support the campaigns and address through service provision mainly on ambulance and psychosocial service.

Health cluster jointly with ERCS zone and woreda health offices organized health campaign advocating the prevention and control of disease and promoting hygiene and sanitation in the villages, urban town and market area, addressing about 70,000 people in 7 key areas.

A total of 30 (M=25 & F=5) volunteers and woreda health staff were trained in basic PSS and 20 (M=20 & F=5) were deployed to provide house to house psychosocial support, case identification. Awareness education was able to reach a total of 154HH (770 people) through home visit and consultation.

A total of 4 ambulances are providing ambulance service and a total of 217 people have got the transportation and first aid service in Silte, Wolayta, Gofa and west Hararge zones since the project started.

Health facilities in the affected areas are partially functioning, inaccessible, and overwhelmed due to the impacts of floods and landslides. The affected areas are also prone to cholera measles and malaria to waterborne diseases due to damaged water sources. Furthermore, the affected community was impacted psychologically, pushing ERCS and other partners to continue providing psychosocial interventions.

Water, Sanitation, and Hygiene

The floods and landslides destroyed water and sanitation facilities in the affected areas, making the displaced population at risk of water-borne diseases. The government, through its WASH cluster and ERCS with support from Arba Minch University, conducted water assessment to verify water quality. Following this, ERCS, with the support of GRC, established 2 water reservoirs and 9 water points to access quality clean water in the new village in Gofa zone through this Appeal. A total of 32 (7F 25M) WASH committee members were trained and supported with water source repair materials to ensure the management of water schemes and efficient distribution of water. Water treatment chemicals were procured and provided to 625 HHs for 3 months' and essential WASH supplies (WASH NFI and hygiene kits) comprising of 20 litre Jerrican, washing dish, body soap, laundry soap were provided to 5,777HHs. A total of 30 volunteers were trained in WASH and hygiene promotion. Jointly with government representatives 14 health and Hygiene campaigns were conducted reaching over 55,000 people. 1,200 printed key messages were distributed reaching more than 8,700 people in Gofa.

Protection, Gender, and Inclusion (PGI) and CEA

The displacement increased protection concerns in different areas and heightened the risk of sexual and gender-based violence (SGBV) and child protection concerns. ERCS with IFRC conducted PGI risk assessment in Gofa and provided capacity development for 25 volunteer and field staff based on needs. Following the training, volunteers were deployed to conduct awareness raising, community dialogues in the affected communities. Women participation was encouraged to bring out the socio-cultural norms often hindering them from speaking out, decision-making and increasing the risk of discrimination. The solution to the barriers was jointly agreed among the male and female group dialogues.

Community targeting was promoted to consider the most vulnerable groups among the affected community through community engagement mechanisms identified. A community compliant, feedback and support mechanism was established to ensure service provision in line with quality assurances and transparency to address challenges faced by communities. However, there is a need to strengthen the committee through orientation to enable documentation, monitoring, and reporting issues. The final evaluation remains unimplemented due to uncompleted planned activities of the project in the targeted zones.

Operational risk assessment

The operational risk assessment was conducted during the planning phase of the project and incorporated in the project plan document. Any risks that arise during the project period are being communicated through email, discussion, and incorporated in reports. ERCS management will communicate if the risk has significantly impacted the implementation of the project activity through managers and decisions will be made by assessing the situation, evaluating alternative solution available, and rigorous discussion made with regional team.

Regarding Security risk, ERCS has a safety and security focal person per region who have trained and actively engaged in collecting, summarizing, reporting and communicating any security related issues on timely manner.

B. OPERATIONAL STRATEGY

Update on the strategy

The operation [Ethiopia - Landslides and Floods \(MDRET036\)](#) remains the same, and the NS has transitioned the emergency response to the recovery, mainly targeting the most affected less supported regions, Oromia, Centra and southern regions. The only change is a request for a no cost extension of three months to complete the following activities:

Shelter

- Construction of 68 shelters on Wolayta zone, just started.
- Completion of plaster work, masonry, toilet structures, and flooring for house construction in Silte Zone 42.
- Documentation and handover process for completed shelters in Silte and Wolayta Zone.

Livelihoods

- Recording and documenting success stories of youth who have completed training and received starter kits.

Multi-purpose cash distribution

- Conduct PDM assessments and reporting in Oromia, Central Ethiopia, and South Ethiopia regions.

Health and Care

- Promote sustainability of PSS/PFA services at the community level through stakeholder and partner discussions.

Water, Sanitation, and Hygiene (WASH) Promotion

- Install 10,000-litre water storage tanks.
- Extension of water line in Wolayta
- Expand hygiene awareness and community mobilization efforts.

Protection, Gender, and Inclusion (PGI)

- Integrate the child-friendly space in Gofa Zone to neighbouring primary school and furnish it with donated equipment from IFRC.
- Train teachers and volunteers to manage the child friendly services (CFS) and ensure sustainability.

Risk Reduction, Climate Adaptation, and Recovery


- Plant trees in newly established and rehabilitated landslide-affected areas.
- Support implementation of community EVCA plans in Gofa and Wolayta Zones through technical assistance.
- Facilitate import drones to Ethiopia procured with support from Danish Red Cross.
- Provide training for humanitarian drone operators.

National Society Strengthening

- Complete the construction of the branch office in Gofa Zone.

C. DETAILED OPERATIONAL REPORT

STRATEGIC SECTORS OF INTERVENTION

	Shelter, Housing and Settlements	Female > 18: 5,097	Female < 18: 5,097
		Male > 18: 4,688	Male < 18: 4,688
Objective:	<i>Communities in disaster and crisis affected areas restore and strengthen their safety, wellbeing and longer-term recovery through shelter and settlement solutions</i>		
Key indicators:	Indicator	Actual	Target
	# of HH supported with shelter kits	0	5,000
	# of HH received emergency shelter materials	3,907	5,000
	# of community members and volunteers trained on safe shelter construction	10	75
	#HH received conditional cash/in kind transitional shelter construction	296	540
	# HH essential Household items	7,289	5,000

Implemented activities

- In all affected areas ERCS participated in the evacuation of the displaced people and relocating the most vulnerable to safer places. The majority were hosted in collective sites in public buildings and makeshift within the host community.
- Distribution of shelter materials included plastic sheets, ropes and HH items comprising of blankets, nets, and kitchen sets, from the prepositioned stock, replenished by IFRC and the support from NS humanitarian response fund and the GRC.
 - 2,627 HH shelter materials in Gofa zone, SE region 2 tarpaulins, 2 blankets, 1 kitchen set, 2 sleeping mats
 - 2,432 HH - shelter materials SE – Site zone (Wolayta) Gamo and Gedeo 2 tarpaulins, 2 blankets, 1 kitchen set, 1 sleeping mat, 1 mosquito net, 1 Hasen bag.
 - 500 HH SW Shoa Oromia 2 tarpaulins, 2 blankets, 1 kitchen set, 2 sleeping mats,
 - 730 HH CE region, shelter NFI comprising tarps, blankets and kitchen sets.
 - 100 HH Southwest region
 - 900 HH Amhara region
- In the southern region, Gofa zone, the Government cleared and allocated new land to evacuate displaced people residing in schools for the schools to resume teaching.
- The woreda administrators in collaboration with partners are coordinating the construction of transition

shelters with the close support from the country and Global Shelter cluster and Government provided ERCS a warehouse for industrial material storage at woreda level.

- The IFRC Surge shelter coordinator in collaboration with ERCS shelter engineer conducted surveys to determine the specific shelter needs and designed shelter structures based on the government guide and developed the actual BOQ.
- Procurement of materials was conducted by ERCS HQ for industrial materials, and Southern region branch for local materials, with approval from IFRC regional logistics.
- On-job training on safe shelter construction was provided to the community construction committee and 10 volunteers in Gofa and 3 professional volunteers in Silte construction site that has contributed to monitor quality local material (sand, stone, wood) and assuring the quality of shelter construction through regular checks and supervision.
- Community engagement has been very key in supporting the movement of materials, where the established construction committee organized 3 days per week for community support. The shelter engineer will quantify community support for accountability.
- A total of 406 out of 550 planned houses have been constructed with contribution from multiple partners. 338 HH are at the finishing stage and 68 at foundation: (320 with support of IFRC and 86 with support of The Church of Jesus Christ latter day's saints). This will contribute to 110 houses being built by the government, 80 under construction from Habitat NGO, leaving the gap of 166 for the targeted 627 HH relocated in Gofa, and the additional 68 houses in Wolayta will contribute to 100 houses constructed by Government leaving the gap of 632HH out of the required 800.
- The feedback from community and consultation with the government, scaled the shelter construction in Wolayta zone, where more than 800 families were displaced and relocated in the new site by the government.

Remaining Planned Activities

- Silte zone 42 house construction undergoing mainly the completion of the plaster work and masonry, toilet structures and floor work finalizing.
- Completion of 68 Wolayta zone construction undergoing at foundation level.
- Documentation of Silte and Wolayta zone completed shelter and handover process.

Challenge

- Procurement of construction materials, primarily through local supplier bidding processes, faced challenges in Gofa Zone and Silte due to a limited number of applicants and a shortage of qualified bidders. This resulted in the need to re-advertise the bidding process, causing delays in completing procurement and subsequently postponing the timely commencement of construction activities.
- There was inflation among shelter items during the construction period. Some of the selected suppliers have interrupted the supply of some items such as sand and gravels due to the price increase and demanded payment increase.
- The South Ethiopia Regional team experienced shortage of warehouse space at the beginning of the shelter construction to hold bulk industrial items purchased.
- Heavy rain caused significant damage to access roads in areas with steep topography constraining the transportation of construction materials, resulting in delays in completion of housing flooring and the latrines structures in Gofa.

Solution taken

- The regional team readvertised the BID process at regional and zonal level to attract both qualified and capable suppliers even though it consumed time.
- The regional team has had discussions with the suppliers separately and with the involvement of zonal level government offices, and able to agree to continue their supply without payment increase.

- The team has discussed the shortage of insufficient warehouse space with government offices and schools and was able to get two additional warehouses (classes unused during holidays). In addition, the Branch has rented one additional warehouse at a zonal level.



Figure 3 and 4: Shelter NFI distribution and housing construction monitoring



Livelihoods

Female > 18: 2,334

Female < 18: 2,334

Male > 18: 2,154

Male < 18: 2,154

Objective:		<i>Communities, especially in disaster and crisis affected areas, restore and strengthen their livelihoods</i>	
Indicator		<i>Actual</i>	<i>Target</i>
Key indicators:	<i># of HHs received farm inputs including seeds and fertilizers.</i>	2,627	3,000
	<i># of volunteers and community trained on basic livelihoods monitoring to volunteer on basic livelihoods.</i>	30	90
	<i># of youths trained in skill development and supported with starter kit.</i>	50	200
	<i># of communities oriented on VSL/Group supported to adopting the existing available schemes, 3 sessions.</i>	0	200
	<i># of HHS families received shots and accessed veterinary services.</i>	0	540
	<i># of displaced HHs received emergency food (3 times).</i>	1,168	1,500
	<i># of affected children supported with Nutrition food (u5).</i>	0	500

Implemented activities

- Distribution of first round emergency food to 1,168 displaced HH in Geze Gofa, Gurage and south Gonder zone comprising 50 Kg wheat flour, 2.5lt cooking oil, to meet the needs of one family for one month.
- 54qt¹ (Maize and Haricot bean) seeds and 314Quintals(qt) (DAP & UREA) fertilizer procured and distributed for 627 HH (MHH 458 and FHH 169). In addition, farm inputs such as seeds and fertilizers was purchased from Ethiopian Seed enterprise and distributed to 1,900 households at west Harage zone of Oromia, Silte zone of Central Ethiopia and Wolayta zone of Southern Ethiopia region.
- 30 (M=25 & F= 5) volunteers and community members were trained to conduct mentorship to affected HH to diversify their livelihood options and regain their livelihoods.
- Basic business skill development training for 50 (M=25 F=25) youths has been carried out and all trainees are engaged in developing their business plan to provide startup kits to revive their livelihood.
- With the support of trained volunteers and community members affected communities enabled to identify different livelihood diversification activities with available resources
- The village saving and Loans (VSL) initiatives could not be implemented, through this appeal, however, the local government is supporting the community on the same, as initiative from the MPCT 5 rounds done in Gofa.
- The restocking activity was done by other organization, SoS Children village, Ethiopia, and the funds were reallocated for other urgent needs including shelter construction in Wolayta and water source rehabilitation.

Remaining Planned activities

- Recording and documentation success stories of youth who have trained and received starter kits.

Challenge

- The cost of the seed and its transportation increased, and the total expenses exceed the planned amounts
- Market in availability of improved seed and fertilizer form the local /regional /zonal market for community

Solution

Seeds and fertilizers are procured at HQ level and transported to implementation sites or zones for distribution and provided to beneficiaries



Figure 5: Seeds and Fertilizer distribution in Hararge

¹ 1 quintal is equivalent to a sack of 100kg



Multi-purpose Cash

Female > 18: 815

Female < 18: 815

Male > 18: 752

Male < 18: 752

Objective:

Households are provided with unconditional/multipurpose cash grants to address their basic needs

Key indicators

Indicator	Actual	Target
# of HHs that received multipurpose cash grant for 3 rounds.	2,627	5,000
# of volunteers trained in Multi-purpose CASH per.	90	90
# of markets assessment conducted.	4	4
# of cash monitoring sessions conducted (PDM, Exit surveys).	2	3

Implemented activities

- Markets assessment and cash feasibility study was conducted in Gofa, Silte, Hararge and Wolayta zones. Markets and major national banks were functioning and within reach of the displaced households
- 627 HH received for 3 rounds MPC (2 rounds by GRC and 1 round by Coca Cola Foundation) two PDM (post distribution monitoring) conducted for cash distribution in Gofa zone.
- 760 HH in Wolayta 665 HH in Silte zone of the Central region and 475 HHs in West Hararge zone of Oromia Region received 3 rounds MPC with the IFRC support.
- The amount of cash disbursement per round in Southern and Central regions were 6900 ETB, and 9,700 ETB for Oromia region based on the MEB defined per region. A total of 56,298,900 birr was given to 2,527 HHs in three regions.

Region	Zones	Woredas	Total beneficiaries	MEB (ETB)	#of Rounds	Total Amount (ETB)
Central region	Silte	Siltie	450	6900	3	9,315,000.00
		Misrak Silte	215	6900	3	4,450,500.00
Southern Region	Wolayta	Kawo Kovisha	550	6900	3	11,385,000.00
		Kindo Didave	210	6900	3	4,347,000.00
	Gofa	Kindo Koysha	627	6900	3	12,978,900.00
Oromia region	Hararge	Hararge	475	9700	3	13,822,500.00
TOTAL			2,527			56,298,900.00

- A total of 60 volunteers were trained for cash beneficiaries' registration and documentation on kobo tool and then engaged in identifying beneficiaries and recording their full information on the Kobo in four targeted zones of three regions.

Challenges

- Incorrect bank account details provided by some beneficiaries led to failed cash transfers, requiring repeated account verification with the bank thereby delaying disbursement.
- Cash transfers were delayed due to late bank account registration, delays in bank confirmation letters, and data entry errors in the Kobo system.

Remaining Planned activities

- PDM assessment and reporting at Oromia, Central Ethiopia and South Ethiopia Region.



Figure 6: Community consultations by ERCS volunteers



Health & Care
(Mental Health and psychosocial support/
Community Health /Medical Services)

Female >18: 14,300

Female < 18: 14,300

Male > 18: 13,200

Male < 18: 13,200

Objective:

Strengthening holistic individual and community health of the population impacted through community level interventions and health system strengthening

Key indicators

Indicator	Actual	Target
# of people successfully referred to using the deployed ambulances.	3,000	500
# of volunteers and staff deployed for search and rescue.	54	50
# of volunteers, health workers, emergency medical team members trained on basic PSS	30	90
# of volunteers and medical team members trained on BFA	200	120
# of Community-based PSS events organized	0	12
#of people reached during Community-based PSS through H2H	770	12,000
# NS team trained TOT training to Conduct safe and dignified burial.	0	30
# HHS received LLINs (long lasting insecticide treated bed net.	6,220	5,000

# of volunteers deployed to Provide community- based PSS and FA at the CFS/community	20	20
# of Health staff supported to Provide specialized mental health outreach services.	4	8

Implemented activities

- 54 staff and volunteers engaged in search and rescue operations reaching 280 people in Gofa, Jimma, Konso, Kefaa and Wolayta zones.
- 217 people were provided with basic first aid and referral services by the ERCS ambulances South Ethiopia region, Gofa and Wolayta zones, and Silte zone of Central region.
- MHPSS trainings were conducted for 30 volunteers, health workers and emergency medical team members. 20 ERCS volunteers were deployed to provide community-based PSS and FA service.
- ERCS zone and woreda health offices organized a health campaign advocating the prevention and control of disease and promoting hygiene and sanitation in the villages, urban town and market area, addressing about 70,000 people in 7 key areas.
- 30 (M=25 & F=5) volunteers and woreda health staff were trained in MHPSS while 20 (M=15 & F=5) volunteers were trained and deployed to provide home-to-home psychosocial support, case identification and awareness education reaching 154 HH (770 people). Emergency medical services, health promotion and support in ambulance operations are going on to the affected families and the entire society

Remaining Planned activities

- Work on sustainability of basic PSS at community level through discussion with stakeholders and partners.
- Orientation to teachers/community committees and volunteers on PSS for managing CFS at the school

Challenge

- Most of the community members remember the event of the landslide and the death of their family members and unable to cope.
- The responders' focus was concentrated on the physical recovery and reconstruction of homes and provision of physical support. The psychological part was forgotten

Solution taken

- The regular psychosocial support sessions facilitated by trained volunteers and health professionals enhanced community members' ability to cope with the impacts of previous shocks



Figure 7: Health awareness session at Kindo Koysha woreda, photo credits ERCS Zonal Branch



Water, Sanitation and Hygiene

Female > 18: 14,485

Female < 18: 14,485

Male > 18: 13,371

Male < 18: 13,371

Objective:

Ensure safe drinking water, proper sanitation, and adequate hygiene awareness of the communities during relief and recovery phases of the Emergency Operation, through community and organizational interventions

Key indicators:

Indicator	Actual	Target
# of HH supported with Water treatment chemicals and orientation on the usage.	627	4,500
# of HHs received water storage and washing equipment.	2,627	4,500
# of HHs received Hygiene materials/kits.	2,200	4,500
# of HHs benefited from water trucking.	0	627
# of community members reached with hygiene awareness.	28,723	55,712
# of volunteers trained on integrated WASH interventions.	30	120
# of people reached during mass environmental cleaning campaigns.	11,000	55,712
# of community and health facility latrines rehabilitated.	0	10
# of community reservoir/Tanks/ points installed.	9	8
# of water sources/boreholes constructed.	2	6
Water quality testing sessions conducted.	1	2

Implemented activities

- 627 HH in Gofa Sothern region received 2 jerricans of 20ltr, 5 bars of laundry soap, water treatment chemicals.
- 950 HH – WASH NFI materials SE – Wolayta zone each HH received 2 jerrican 20ltr, 2 bars of laundry soap.
- 500 HH SW Shoa Oromia 2 Jerrican 10ltr, 1 dignity kit, 2 bars of laundry soap, 12sachet water purification.
- 550 HH CE region, WASH NFI 1 Jerrican 10ltr, 2 Laundry soap.
- A total of 30 volunteers were trained in WASH and Hygiene promotion.
- 2 water sources constructed with 9 water points extended in Gofa zone, serving more than 627 HH.
- Orientation and equipping community committees with water point repair kits.
- 14 health and hygiene campaigns were organized addressing more than 8,700 people in SE affected community, village, town, and market areas involving trained volunteers, Gov health officers using vehicles, banners with key messages, loudspeakers.
- A total of 1,200 printed materials with health and hygiene key messages were distributed and portrayed in public sites.
- Two water storage tankers of 10,000 litres each were procured and situated in the shelter construction area and used for storing water during the shelter construction mainly during plastering and masonry work.

- The water trucking was not implemented as water source rehabilitation and extension supplied the need.
- Latrine construction at the community included in shelter packages, and health facilities were done by other IPs.

Remaining Planned activities

- Installing water storage tankers of 10,000 litres.
- Reach more community members with hygiene awareness community mobilization
- Water source repair in Wolayta.



Figure 8: Hygiene awareness printed posters in Gamo Gofa , photo credit ERCS Zonal Branch

Pictures of 2nd water points development



Figure 9: Water tank construction and line extension to a collection point (Bono) in new settlements in Gofa by the GRC support; photo credits ERCS Zonal Branch



Figure 10: Hygiene awareness session in Gamo Gofa , photo credit ERCS Zonal Branch

Pictures of water points development under process



Figure 11: Water source rehabilitation; Gofa – Photo credits, ERCS branch



Protection, Gender and Inclusion

Female > 18: 14,485

Female < 18: 14,485

Male > 18: 13,371

Male < 18: 13,371

Objective:

Communities identify the needs of the most at risk and particularly disadvantaged and marginalized groups, due to inequality, discrimination and other non-respect of their human rights and address their distinct needs

Key indicators:

Indicator	Actual	Target
# of volunteers/staff trained in PGI/CEA mainstreaming.	75	150
# of volunteers and government protection staff trained on protection case management, community-based protection mechanisms.	20	60
# of awareness sessions on SGBV and Child safeguarding conducted.	2	14
# of people reached with awareness-raising sessions SGBV and Child safeguarding.	0	5,000
# of women and girls received dignity kit.	550	4,500
# CFS established and maintained.	0	4
# of people participated in gender-sensitive dialogue session.	0	2,000

Implemented activities

- 75 volunteers and staffs are trained on PGI integration to project activities and sensitize the communities on PGI importance and protection service provided.
- CFS materials that are provided by IFRC are transported to Gofa zone and negotiation with school to establish the CFS within their compound is undergoing.
- 550 women and girls received dignity kits

Remaining Activity

- Establishment of Child friendly space at Gofa zone and refurbish it with all necessary equipment's that are donated by IFRC.

Challenge

- Some of the Activities in PGI section are late to implement and then changed to other activities.
- The regional team is challenged to establish CFS on time due to limited land, and the initially allocated area was issued to the church. Plan B is to allocate the materials to nearby school and establish sustained space for children to play, and orient teachers and community volunteers to support them.



Community Engagement and Accountability

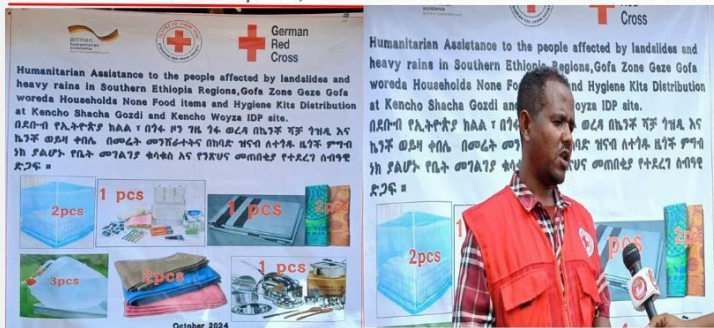
Objective:

	Indicator	Actual	Target
Key indicators:	<i># of people participating in the inception meeting.</i>	110	90
	<i># Need assessment conducted.</i>	4	5
	<i># of volunteers and staff trained on CEA, CoC/PGI /PSEA.</i>	75	150
	<i># of types of CEA materials printed.</i>	6	12
	<i># of feedback mechanisms in place.</i>	2	3
	<i># of trained volunteers deployed to manage the information desk.</i>	0	30

Implemented activities

- ERCS branches conducted rapid assessments and reported through the Emergency Operation Centre (EOC).
- Community communication, complaint and feedback mechanism was established and managed by community committees.
- Inception meeting in the southern region was conducted with ERCS staff and stakeholders including community representatives to inform them about the project objectives, and engagement for each stakeholder. A total of 110 people participated in the session and committed to supporting and complementing the ERCS interventions during the response.
- During the meeting the agreed to establish the community construction committee to lead in community engagement activities and assist in monitoring of local materials delivery.
- The Committee coordinated with community to participate at least 3 times per week in supporting in construction work, like materials movement, (New site is located almost 8-10 Km from the temporary residents)
- ERCS organized a handing over event to the displaced families in Gofa, involving community members, government officials, sector leads, PNS, volunteers and partner NGO working in the area. A total of 296 houses, 2 water sources and 9 Bono were handed over to identified beneficiaries who are severely affected and displaced families in the criteria set by communities, for shelter allocation.
- 50 volunteers and staffs are trained CEA/PGI/PSEA to mobilize and sensitize the community during the selection of beneficiaries and handling complaints and registration along with the community selected committees.
- For MPCT interventions, 2 committees were established in each location, to support in beneficiary selection, complaint handling and feedback management across the in 4 zones of three regions. The committee members were oriented in feedback collection, and handling procedures and PGI/PSEA concepts.
- 2 PDM sessions were conducted for MPCT in Gofa, 1 for Wolayta and Silte. [PDM Report for Siltie and Wolayita Zones](#)
- One documentary film engaging the affected community was done involving collecting field stories, challenges and success. [land slide stories](#)

Pictures of NFIs description, communicated to beneficiaries at Gofa



Community participation in shelter construction



Risk Reduction, climate adaptation and Recovery

Female > 18: 6,630	Female < 18: 6,630
Male > 18: 6,120	Male < 18: 6,120

Objective:

Key indicators:	Indicator	Actual	Target
	# of Communities based EVCA sessions conducted.	2	4

# of Communities Implementing EVCA plans.	2	4
# of trees planted.	11462	TBC
# of drone operators trained.	0	4
# of drone sets procured.	2	2
# of people trained on multi-hazard search and rescue TOT.	0	30
# of S&R equipment prepositioned.	0	1
# Boat and navigation equipment prepositioned.	1	1
# Life jackets prepositioned.	0	50
# Aqua and Fire protective gears prepositioned.	0	25
# warehouse constructed/rehabilitated.	2	2
# of regional volunteers trained BDRT.	0	40
# of people reached with Early action messages in the 20 years Flood EAP return period was triggered area.	300	TBC

Implemented activities

Contribution to the regional warehouse construction in the Southern region to serve as the Hub for prepositioning relief materials for the Southern zone.

- 2 trainings provided to 17 community members in Wolayta zone and Gofa zone of South Ethiopia region and they participated in the development of EVCA community plan.
- 2 community EVCA plan are developed and shared to ERCS HQ DRR department for follow up and technical support.
- 11,562 Tree planted in Gofa zone (6,897) of southern Ethiopia and Slite zone (4,665) of Central Ethiopia regions on selected sites that are affected by landslide and flood in previous year.
- Drones are procured from abroad through Danish red cross and importing to Ethiopia is undergoing. These drones will serve the Ns in the future disaster preparedness, in mapping, assessments, monitoring flood and river levels, and assessment during disaster occurrences in areas where access is challenge.
- 1 rescue boat, 8 passenger capacity is procured and imported to Ethiopia. Currently, it is stored at ERCS HQ warehouse and ready to be deployed. The Boat was delivered with the following equipment, 1 first aid Kit, 7 life Jackets, 1 life ring, 1 fire extinguisher, 1 fibre blanket, and.50Mts rope,

Remaining Planned activities

- Tree planting in the newly established and rehabilitation of landslide affected areas.
- Follow the community EVCA plan and provide technical support on the implementation at Gofa and Wolayta zones of south Ethiopia.
- Procurement of Drones and importing to Ethiopia with the support of Danish RC.
- Provide Humanitarian Drone operators training.

Challenge

- Drone importing to Ethiopia is not complete due to uncompleted negotiations with Government Drone use approving agency INSA/ Information Network Security Agency/. It is on the use and stage of drones mainly during functional periods.
- Unable to conduct the evaluation and review meeting due to uncompleted or not finalized shelter and other activities.



Figure 13: Tree planting in Silte zone, Photo credit ERCS zonal branch

Enabling approaches



National Society Strengthening

Objective:

	Indicator	Actual	Target
Key indicators:	# of staff recruited at HQ and Branch level to support the implementation of the operation.	8	15
	# of Vehicles procured to support the operations.	2	2
	# of computers procured to support operations.	5	5
	# of tablet procured to support operations.	0	30
	# of Staff trained on financial management.	0	30
	# of staff trained on PMER.	0	30
	# of sessions conducted for DRM, Business development and Project management in Emergency Setting.	0	7
	# of project documentation developed and published.		2
	% Contribution to Branch office construction.	1	TBC

Implemented activities

- 8 staff engaged to support operation at HQ and Branch level, including Project FP (HQ), Project accountant 50% (HQ), Sr IM (HQ), Branch Coordinator (50%), Shelter engineer (Field), Driver (Field), Project coordinator (field), Admin and finance(field).
- 9 operation monitoring and 1 plan review with stakeholder and 1 PDM undertaken.
- Procure and equip staff with working tools through the procurement of 5 computers.
- Procurement of land cruiser to support branch operation (VRF) – IFRC support in process.
- Security assessment, jointly with IFRC.
- 1 vehicle provided by IFRC delegation office has been serving the Southern Ethiopia regional branch to successfully implement the project activities since November 2024.
- 2 vehicles are procured from abroad and provided to ERCS to use in the project operation areas.

- 8 staff are recruited at HQ and Branch level for the successful implementation of the project at HQ and regional level.
- 5 laptop computers were purchased and provided to HQ and regional staffs working in the project.
- 1 project performance recording and documentation is performed by ERCS communication department and South Ethiopia regional TV and radio agency during key shelter handover event at Gofa zone.

Remaining Planned activities

- Branch office construction in Gofa zone.

Challenge

- Silte zone shelter documentation is not completed because the shelter construction is undergoing.



Coordination and Partnerships

Objective:

	Indicator	Actual	Target
Key indicators:	No. of movement coordination meeting conducted	2	6
	No. of external coordination meeting conducted/attended	2	4

Implemented activities

- Appeal and OS presented in MOC meeting July and September sessions.
- Assessment team participated in emergency coordination command centre in Gofa, August 2024 during assessment.
- Coordination meeting for material procurement with regional team.

Planned activities

- Strengthen coordination internally and externally.
- NS strengthen participation in cluster coordination at National and regional level.



Shelter Cluster Coordination

Objective:

	Indicator	Actual	Target
Key indicators:	No. of advocacy and fundraising for the shelter and settlement sector conducted	0	TBD
	No. of Capacity building for shelter and settlements actors conducted.	0	TBD

Implemented activities

- Surge deployed and supported the shelter cluster coordination engaging all stakeholders, 3 meetings held, link and what-sup group shared for reporting and sharing updates,
- Supported in development of the country shelter TWG



Objective:

	Indicator	Actual	Target
Key indicators:	# of Surge deployed to support operation	1	2
	# of Staff supporting operation	4	4

Implemented activities

- Supported the NS in conducting rapid assessment in Gofa.
- Surge deployment.
- Resource mobilization of remote support from RO, CFS Material support.
- Coordination with RCRC and external partners.
- Field monitoring.
- Security assessment.

Planned activities

- Extend coordination with movement and Non movement partners to mobilize resources to support the operation.
- Participate in coordination meetings, internal and external.
- Resource mobilization remote support from RO, or surge deployment to the CCD.
- Provide Technical support to the NS.

D. Financial report

The Emergency Appeal for Ethiopia Landslides and Floods sought CHF 3.5 million and received CHF 2.57 million in funding, including a CHF 1 million DREF loan. To date, CHF 2.32 million has been spent, leaving a balance of CHF 250,065.

Contact information

For further information, specifically related to this operation please contact:

In the National Society

- Secretary General: Abera Lulessa; email: ercs.sg@redcrosseth.org,
- Deputy Secretary General: Dires Desyibelew; email: dires.desyibelew@redcrosseth.org,

In the IFRC

- IFRC Regional Office for Africa: Rui Alberto Oliveira, Regional Operations Lead; email: rui.oliveira@ifrc.org, phone: +254 780 422276
- IFRC Delegation/Country Cluster support team: Paula Fitzgerald, Head of Country Cluster Delegation; email: paula.fitzgerald@ifrc.org, phone: +251 906 997 720
- IFRC Delegation/Country Cluster Delegation: Robi Wambura, DRM Delegation; email: robi.wambura@ifrc.org,

For IFRC Resource Mobilization and Pledges support:

- IFRC Regional Office for Africa: Louise Daintrey, Head of Strategic Engagement and Partnerships; email: louise.daintrey@ifrc.org, phone: +254 110 843 978

For In-Kind donations and Mobilization table support:

- Logistics Coordinator for Africa: Allan Kilaka Masavah, Head, Global Humanitarian Services & Supply Chain Management, Africa; email: allan.masavah@ifrc.org, Phone: +254 113 834 921

How we work

All IFRC assistance seeks to adhere the Code of Conduct for the International Red Cross and Red Crescent Movement and Non-Governmental Organizations (NGOs) in Disaster Relief, the Humanitarian Charter and Minimum Standards in Humanitarian Response (Sphere) in delivering assistance to the most vulnerable, to Principles of Humanitarian Action and IFRC policies and procedures. The IFRC's vision is to inspire, encourage, facilitate and promote at all times all forms of humanitarian activities by National Societies, with a view to preventing and alleviating human suffering, and thereby contributing to the maintenance and promotion of human dignity and peace in the world.

Emergency Appeal

INTERIM FINANCIAL REPORT

Selected Parameters			
Reporting Timeframe	2024/7-2025/11	Operation	MDRET036
Budget Timeframe	2024/7-2025/11	Budget	APPROVED

Prepared on 19 Dec 2025

All figures are in Swiss Francs (CHF)

MDRET036 - Ethiopia - Landslides and Floods

Operating Timeframe: 29 Jul 2024 to 31 Dec 2025; appeal launch date: 29 Jul 2024

I. Emergency Appeal Funding Requirements

Thematic Area Code	Requirements CHF
AOF1 - Disaster risk reduction	3,500,000
AOF2 - Shelter	0
AOF3 - Livelihoods and basic needs	0
AOF4 - Health	0
AOF5 - Water, sanitation and hygiene	0
AOF6 - Protection, Gender & Inclusion	0
AOF7 - Migration	0
SFI1 - Strengthen National Societies	0
SFI2 - Effective international disaster management	0
SFI3 - Influence others as leading strategic partners	0
SFI4 - Ensure a strong IFRC	0
Total Funding Requirements	3,500,000
Donor Response* as per 19 Dec 2025	1,573,703
Appeal Coverage	44.96%

II. IFRC Operating Budget Implementation

Thematic Area Code	Budget	Expenditure	Variance
AOF1 - Disaster risk reduction	2,152,285	1,975,032	177,253
AOF2 - Shelter	0	70,016	-70,016
AOF3 - Livelihoods and basic needs	0	30,604	-30,604
AOF4 - Health	0	0	0
AOF5 - Water, sanitation and hygiene	0	0	0
AOF6 - Protection, Gender & Inclusion	0	0	0
AOF7 - Migration	0	0	0
SFI1 - Strengthen National Societies	0	0	0
SFI2 - Effective international disaster management	0	0	0
SFI3 - Influence others as leading strategic partners	0	0	0
SFI4 - Ensure a strong IFRC	450,702	249,613	201,090
Grand Total	2,602,987	2,325,265	277,723

III. Operating Movement & Closing Balance per 2025/11

Opening Balance	0
Income (includes outstanding DREF Loan per IV.)	2,573,703
Expenditure	-2,325,265
Closing Balance	248,439
Deferred Income	0
Funds Available	248,439

IV. DREF Loan

* not included in Donor Response	Loan :	1,000,000	Reimbursed :	0	Outstanding :	1,000,000
----------------------------------	--------	-----------	--------------	---	----------------------	-----------

Emergency Appeal

INTERIM FINANCIAL REPORT

Selected Parameters			
Reporting Timeframe	2024/7-2025/11	Operation	MDRET036
Budget Timeframe	2024/7-2025/11	Budget	APPROVED

Prepared on 19 Dec 2025

All figures are in Swiss Francs (CHF)

MDRET036 - Ethiopia - Landslides and Floods

Operating Timeframe: 29 Jul 2024 to 31 Dec 2025; appeal launch date: 29 Jul 2024

V. Contributions by Donor and Other Income

Opening Balance							0
Income Type	Cash	InKind Goods	InKind Personnel	Other Income	TOTAL	Deferred Income	
DREF Response Pillar				1,000,000	1,000,000		
European Commission - DG ECHO	139,230				139,230		
Finnish Red Cross	100,661				100,661		
Japanese Red Cross Society	28,432				28,432		
On Line donations	89				89		
Red Cross of Monaco	9,370				9,370		
Republic of Korea Government	865,291				865,291		
Romanian Government	30,059				30,059		
The Canadian Red Cross Society (from Canadian Gov	100,884				100,884		
The Netherlands Red Cross (from Netherlands Govern	299,687				299,687		
Total Contributions and Other Income	1,573,703	0	0	1,000,000	2,573,703	0	
Total Income and Deferred Income					2,573,703	0	