



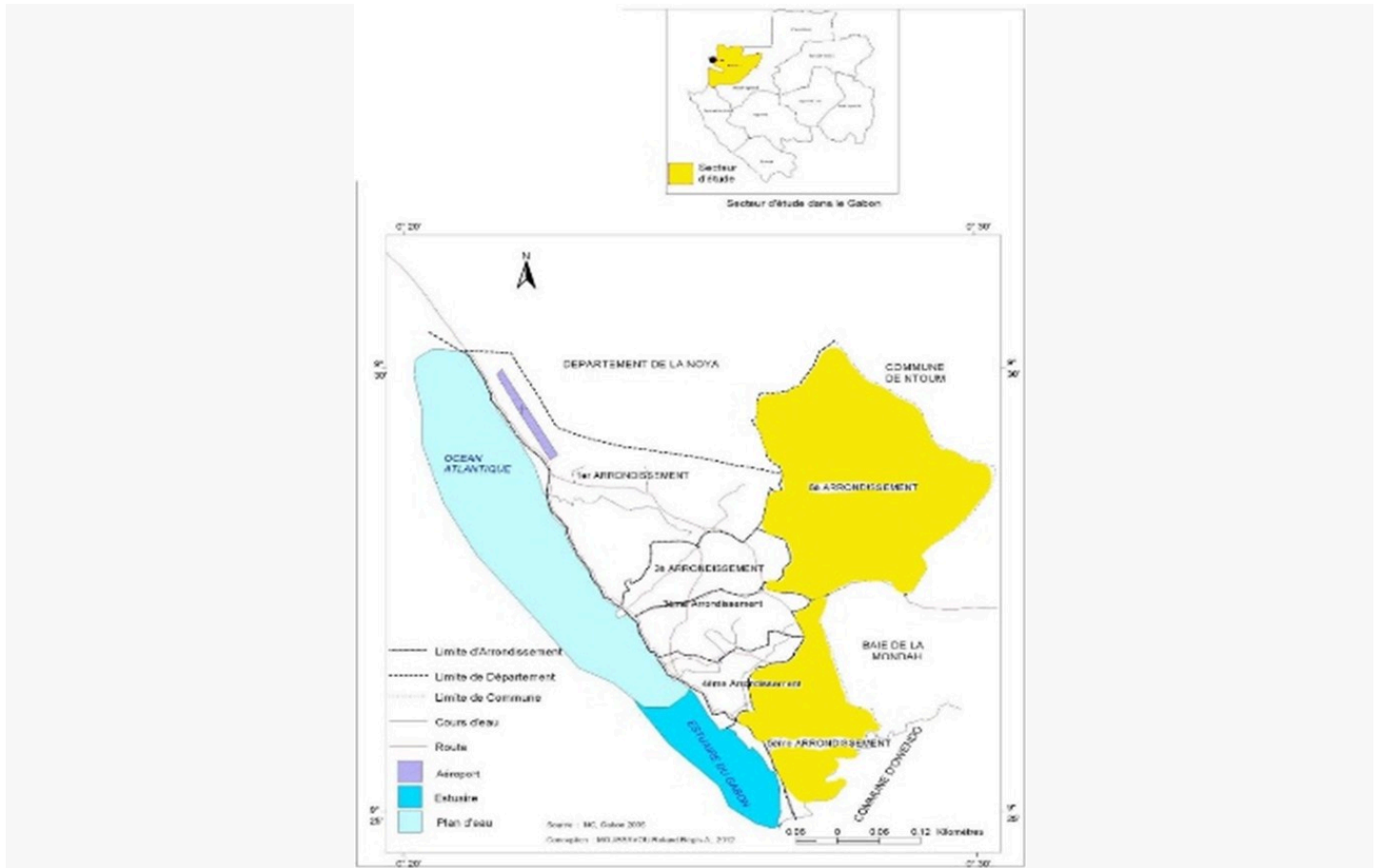
Impacts of strong winds in Libreville

Appeal: MDRGA015	Hazard: Storm Surge	Country: Gabon	Type of DREF: Response
Crisis Category: Yellow	Event Onset: Sudden	DREF Allocation: CHF 199,188	
Glide Number: -	People Affected: 3,000 people	People Targeted: 1,500 people	
Operation Start Date: 22-12-2025	Operation Timeframe: 4 months	Operation End Date: 30-04-2026	DREF Published: 30-12-2025
Targeted Regions: Estuaire			

Description of the Event

Date of event

16-12-2025



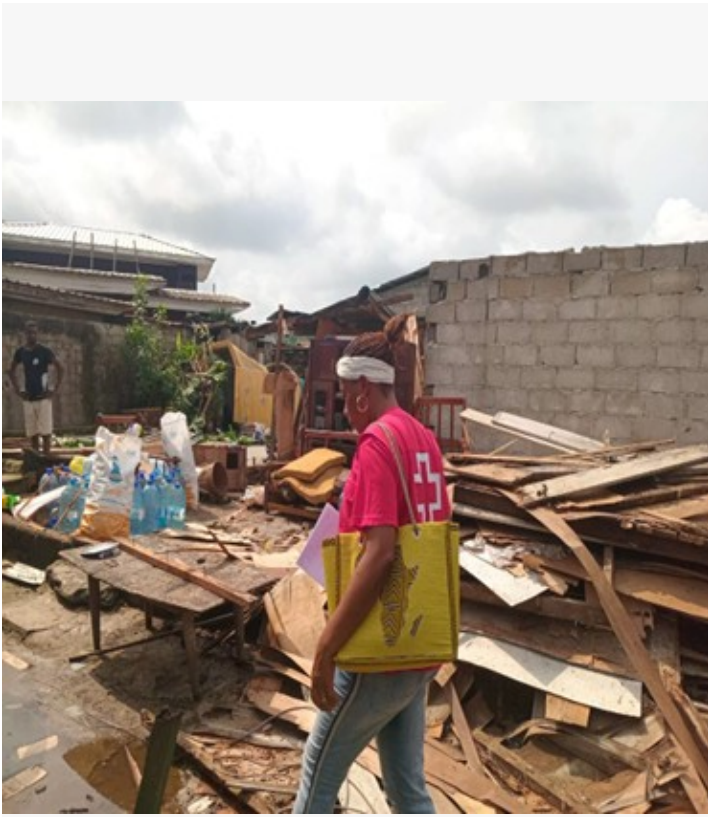
Map of affected provinces. Source Gabonese Red Cross

What happened, where and when?

Torrential rains accompanied by violent winds battered Libreville, the capital of the Estuaire province and of Gabon, during the night of 15 to 16 December 2025, causing significant damage in the 5th and 6th districts. This severe weather affected numerous families as well as public and private infrastructure, notably including the destruction of a school, several businesses, utility poles, and the maternity ward of the Estuaire Regional Hospital.

It is estimated that approximately 3,000 people have been affected, representing nearly 600 households.

As of 16 December, rapid assessments by the Red Cross reveal that more than 300 homes were partially destroyed or swept away by the violent winds. Several businesses, a school, administrative buildings, and a hospital also sustained damage. Some victims are sleeping in the open under makeshift shelters constructed from salvaged materials, while others have found refuge with relatives, friends, or acquaintances. Public authorities have visited the sites to assess the situation.



Volunteers in the field



A view of the affected neighborhood (photo CRG)

Scope and Scale

According to information provided by the Provincial Committee of the Red Cross of the Estuaire, torrential rains accompanied by strong winds, lightning and thunder fell on the city of Greater Libreville on the night of 15 to 16 December 2025, causing significant damage. These bad weathers are said to have affected about 600 households as well as several infrastructures, including shops, schools, administrative buildings and electricity poles, which are now littered on the roads, creating serious risks for the safety of the population. The Gabonese Red Cross Provincial Committee, with the support of volunteers, is currently assessing the situation. Initial estimates indicate that 300 households, or nearly 1,500 people, are among the most vulnerable.

The most urgent needs are for shelter, followed by basic necessities for families whose homes have been severely damaged, with partial or total collapse of roofs and walls. Nearly 300 houses are concerned. These losses are mainly due to strong winds and falling trees, which have also contributed to the deterioration of public and private property. In Gabon, torrential rains are usually steep and intense, often accompanied by landslides, strong winds, throughout the rainy season. This period, which began in September, is expected to last until the end of May or the beginning of June, given the climatic variations.

According to the multi conventional risk newsletter published on 8 December 2025, by the African Centre for Meteorological Applications for Development (ACMAD), Gabon is classified in the orange zone for rainfall (50 to 100 mm) and strong winds (above 65 km/h).

The last significant storm was in Franceville in 2022, and Libreville is usually affected by more floods than windstorms. The fact that in this small rainy season Estuaire is already affected, especially Libreville, demonstrates the unusual trend of the upcoming season. The people affected this time is relatively the same as the most recent floods DREF operation, but the number of people affected this time is concentrated in a small area and during the small season while previous impact was spread across several areas and during the major rainy season. In addition, NS capacity to respond on their own resources is limited while reliance on Red Cross from local authorities and communities is there.

Source Name	Source Link
1. Facebook Post	https://www.facebook.com/watch/?v=830032843159102
2. Gabon Television Group, the leading national channel	https://www.youtube.com/watch?v=SqSEPnwK7Yw

Previous Operations

Has a similar event affected the same area(s) in the last 3 years?	Yes
Did it affect the same population group?	No
Did the National Society respond?	-
Did the National Society request funding form DREF for that event(s)	-
If yes, please specify which operation	-
If you have answered yes to all questions above, justify why the use of DREF for a recurrent event, or how this event should not be considered recurrent:	
-	
Lessons learned:	
<p>Between October and June, Gabon is often hit by storms accompanied by rain, lightning, and strong winds. In recent years, one of the most significant events that the Gabonese Red Cross has faced apart from the latest is the storm that occurred in Franceville in May 2023. The NS intervened to assist 3000 people whose homes were severely affected by the strong winds during the rainy season. Key lessons learned from this intervention included challenges related to team organization, role clarification and operational capacity building. During implementation, the National Society made adjustments to address them, and these lessons have been incorporated into current planning to prevent similar weaknesses. Considerations relate in particular to the operational structure to be put in place and the mechanisms to ensure the rapid delivery of assistance. Disaster management by the Gabonese Red Cross is generally managed from headquarters, which involves deployments from the central level and involves logistical constraints, accentuated by distances and the rainy season. To avoid any delay in the start of activities particularly related to the signing of the Project Financing Agreement and the transfer of funds, the Cluster and the National Society will have to agree on a pre-financing mechanism as soon as the DREF is approved, thus allowing the immediate launch of activities. To better respond to these challenges, the National Society will appoint a dedicated operation management team, whose members will be specifically assigned to the implementation of activities, especially in the sensitive context of the end of the year.</p>	
Did you complete the Child Safeguarding Risk Analysis in previous operations, what was risk level?	No

Current National Society Actions

Start date of National Society actions

15-12-2025

Assessment	<p>As soon as the disaster occurred on the night of the 15th to the 16th, the NS deployed volunteers from the provincial committee of the Estuaire on the ground to assess the situation.</p> <p>On the 16th for a quick assessment of the situation, the GRC, the firefighters and Civil Protection agents evaluated the areas impacted by the fire, clearing debris and felling trees that obstructed access roads and damaged houses</p>
Other	<p>Information meetings are held between the head office and the branch on a regular basis. Data is continuously updated according to the capacity of the deployed teams.</p> <p>Exchanges and coordination with the local authorities continue.</p>



IFRC Network Actions Related To The Current Event

Secretariat	The IFRC cluster team is providing technical support to the NS for the development of this DREF request and continues to monitor the evolution of the situation.
Participating National Societies	No PNS is present in Gabon

ICRC Actions Related To The Current Event

The ICRC delegation based in Yaoundé, Cameroon, also covers Gabon, but for the moment no support is provided by the ICRC.

Other Actors Actions Related To The Current Event

Government has requested international assistance	No
National authorities	The municipal authorities in the province of Estuary have raided the field to inquire about the situation. No communication has been made by the Government.
UN or other actors	No action has yet been recorded on the part of the United Nations system and other actors.

Needs (Gaps) Identified



Shelter Housing And Settlements

According to data collected by the branches by December 18, 300 houses have been damaged by the Strong Winds in the 5th and 6th districts of Libreville. There are partially or totally torn roofs, fallen trees, plank houses destroyed, and collapsed walls. These homes are uninhabitable or too risky for families who would like to resettle there. The debris also damaged household equipment. For lack of other options, many households remain without roofs, and the others are welcomed by their families or neighbours.



Health

Shelter housing and settlements

According to data collected by the branches by 18 December, 300 houses have been damaged by the Strong Winds in the 5th and 6th districts of Libreville. There are partially or totally torn roofs, fallen trees, plank houses destroyed, and collapsed walls. These homes are uninhabitable or too risky for families who would like to resettle there. The debris also damaged household equipment. For lack of other options, many households remain without roofs, and the others are welcomed by their families or neighbours.

Health

In these districts, stagnant rainwater and debris from destroyed roofs become larval breeding grounds for the proliferation of mosquitoes, with the risk of malaria. These factors also create conditions conducive to the spread of diarrheal diseases and other infections linked to contaminated water, such as drinking water from damaged wells or open reservoirs. It is crucial to prevent any risk of epidemics by immediately raising awareness among the population, particularly on the importance of covering water containers and using mosquito nets. In addition, the destruction of infrastructure and the management of debris are exposing residents to serious injuries, such as cuts caused by torn metal sheets or nails scattered in the affected areas.

Exchanges and coordination with the local authorities continue.

Secretariat The IFRC cluster team is providing technical support to the NS for the development of this DREF request and continues to monitor the evolution of the situation. Participating National Societies No PNS is present in Gabon

Government has requested international assistance No National authorities The municipal authorities in the province of Estuary have raided the field to inquire about the situation. No communication has been made by the Government. UN or other actors No action has



yet been recorded on the part of the United Nations system and other actors.

Families affected by the loss of equipment sometimes represent a life's worth of property, representing a significant shock for most. This trauma must be managed with the same seriousness and consideration as material aid.



Water, Sanitation And Hygiene

The rains were violent and rapid, washing away roads, rubbish and structure within the community. According to information received from the provincial committee of the Red Cross, several wastewater evacuation routes are destroyed, promoting a risky environment for households, especially children, people with reduced mobility, the elderly and vulnerable groups. In addition, the rainwater reservoirs naturally created by the absence of runoff due to the transported debris limit environmental hygiene conditions and favor vector niches. Several households that have found refuge with host families are also in need of support for continuous household hygiene, contributing to the prevention of water-related diseases and poor hygiene.



Protection, Gender And Inclusion

As a result of the impacts of these strong winds, there is a risk of an increase in sexual assaults in overcrowded or poorly lit shelters. We can also record the risks of kidnapping or mistreatment in places subject to promiscuity (with limited privacy), the loss of essential documents. This also causes difficulties in accessing information, resources, and even assistance for people with reduced mobility.



Risk Reduction, Climate Adaptation And Recovery

These strong winds have made it possible to note that there is a large gap in disaster risk reduction. Communities have no idea how to behave before, during and after high winds. Also, no provision is made to have safe shelters (securing roofs and the environment) as well as evacuation plans in case of emergency in the neighborhoods.



Community Engagement And Accountability

These strong winds also had an impact on infrastructure such as electrical installations and the disruption of the grid. This also leads to the spread of false information on social networks when the population needs clear, reliable and up-to-date information. It will be important to use community communication channels through community leaders both on the implementation of activities and on the evolution of the situation (weather forecasts). To fill this gap, it is important to use channels such as feedback collected by volunteers with a feedback system.

Any identified gaps/limitations in the assessment

In addition to the risks identified below, there is a lack of coordination between authorities, Red Cross and community leaders for a real plan to reduce environmental vulnerabilities. The same is true of the coverage of other needs, such as education, with the loss of goods and other materials by households. The same is true of access to these areas, which does not facilitate coverage of the extent of the affected areas.

[Assessment Report](#)

Operational Strategy

Overall objective of the operation

The objective of this operation is to provide direct assistance to 300 households (1,500 people) in the Shelter, Water, Hygiene and Sanitation (WASH) and Health sectors.

The Cash+ approach will be used to combine the multipurpose Cash Transfer modality that will provide the 300 households with the flexibility to cover their identified priority needs (shelter, essential household items, food, health, etc.).



The National Society will conduct an ongoing field assessment to obtain more information on the damage caused by the strong winds, lightning and thunder, and if necessary, update the response strategy of this operation. The initial implementation time for this operation is five months to ensure that the NS has time to complete the implementation of the activities.

Operation strategy rationale

This operation is defined on the basis of the available data, taking into account the difficulties of access due to damage caused by high winds, lightning and thunder.

The Gabonese Red Cross (CRG) plans to provide immediate assistance to 300 households through the Cash+ modality, in the following sectors:

1. Shelter and household items (Target: 300 households, or 1,500 people)

The CRG will provide support to households whose homes have been partially or totally destroyed.

The Cash strategy will be used to allow families to have the flexibility to cover their identified priority needs (shelter, essential household items, food, health, etc.). This approach promotes the dignity of beneficiaries by allowing them to choose how the funds are used.

An existing agreement with Airtel (mobile operator) will be analyzed to facilitate transfers via Mobile Money or other methods. In the absence of a full market analysis, an initial amount of XAF 192,000 (CHF ≈ 272.64) per household will be allocated. This amount is based on the experiences of the last DREF operation and the high costs of construction materials and rents in urban areas in Gabon. It is intended to support the purchase of materials, the payment of rental costs and the acquisition of essential household items. The transfer will be carried out in a single instalment.

Additional costs:

Withdrawal fee: XAF 5,000 per household (XAF 1,500,000 for 300 households).

Financial Provider Fee (PSF): 1% of the total amount transferred (XAF 90,000,000), i.e. XAF 900,000.

These provisions will be confirmed after analysis of the contract between CRG and Airtel.

A market assessment will be carried out at the start to validate the strategy and adjust the amounts if necessary.

The CVA manager of the IFRC Cluster in Yaoundé will provide technical support to the CRG, will lead a field mission to validate the amounts, supervise the evaluations, facilitate the training of staff and supervise the distributions.

Activities planned for the implementation of Cash+:

Information meetings with stakeholders Cash feasibility study multi-sectoral needs assessment Market assessment PSF mapping Staff and volunteer training Targeting and registration of beneficiaries Baseline survey Validation of lists Cash distribution (1 round) PDM survey Market price monitoring Endline survey Capitalization workshop.

2. WASH (Target: 300 households, or 1,500 people) To reduce the health risks associated with exposure to bad weather and deteriorating hygiene conditions, the CRG will distribute sanitation kits to the 300 most affected households:

Solid soap (400 g): 4 pieces per household (total: 1,200 pieces) Liquid soap (5 L): 1 can per household (total: 300 cans) Brush brooms: 1 per household (total: 300) Household brooms: 1 per household (total: 300) Bleach (5 L): 1 can per household (total: 300)

Hands-on demonstrations will be held prior to distribution to ensure effective use.

Sanitation campaigns will be carried out 3 days a month for 3 months (i.e. 3 campaigns), including wastewater management and community clean-up work.

A market assessment in Libreville will be carried out to define the most suitable supply chain (via Cameroon or locally), taking into account logistical challenges and urgency.

The IFRC Delegation in Yaoundé will support this analysis and the implementation of a logistics strategy for WASH and shelter items (in case cash is not possible).

3. Health (Target: 300 households, i.e. 1,500 people) The CRG will ensure:

Standard and psychological first aid for 14 days from the start of implementation.

Health awareness during sanitation campaigns (prevention of waterborne and environment-related diseases). Distribution of impregnated mosquito nets: 4 per household to prevent malaria.

4. In-depth needs assessment A team of 25 volunteers, 2 supervisors and 11 staff members (including 4 from the headquarters and 4 focal points from the Estuary Committee) will be deployed to carry out the assessments over 7 days. An update of the operation will be performed if necessary. Those involved in implementation will receive DSAs as practices at the NS:

- Volunteers: 5,000 XAF/day

- Supervisors and psychologists: 10,000 XAF/day

- Facilitateurs: 15,000 XAF/day.

5. Cross-cutting themes. The CEA (Community Engagement) and PGI (Protection, Gender and Inclusion) approaches will be integrated into all activities. Volunteers will receive integrated training and briefings, and image boxes will be developed for community outreach.

6. DREF Management Team: The national team will include:



- DREF Focal Point
- CRM Manager
- WASH Manager
- Communication Manager
- IT/Graphic Design Manager
- Financial Manager
- Cashiers
- Logistics
- Purchase

- Drivers (2). They will receive a one-month salary contribution.

The intervention will be coordinated with the authorities of the Estuary governorate to ensure synergy of actions.

Targeting Strategy

Who will be targeted through this operation?

In total, the 300 households provisionally identified as the most vulnerable will be targeted by this operation and will all receive WASH and health support. As for those who have lost their homes, i.e. 300 households, they will receive cash support to cover their needs for shelter and household items.

The assessments will focus on the general situation in the city of Libreville and its environs, but more specifically on the most affected populations in the

5th and 6th arrondissements who have experienced more damage and will be used to update the response strategy for this operation if necessary.

Explain the selection criteria for the targeted population

Local administrative authorities, supported by the local disaster response team of the NS, descended on the affected areas and pre-estimated the number of people in need at 1,500.

Total Targeted Population

Women	300	Rural	-
Girls (under 18)	450	Urban	100%
Men	300	People with disabilities (estimated)	19%
Boys (under 18)	450		
Total targeted population	1,500		

Risk and Security Considerations (including "management")

Does your National Society have anti-fraud and corruption policy?	Yes
Does your National Society have prevention of sexual exploitation and abuse policy?	Yes
Does your National Society have child protection/child safeguarding policy?	No
Does your National Society have whistleblower protection policy?	No



Does your National Society have anti-sexual harassment policy? **Yes**

Please analyse and indicate potential risks for this operation, its root causes and mitigation actions.

Risk	Mitigation action
The ongoing occurrence of strong winds, lightning, thunder, and heavy rainfall with the potential for landslides and flooding in the Red Cross teams' area of operation represents a real risk.	Establish a safety perimeter during deployment and equip volunteers with personal protective equipment (PPE). Ensure that teams are informed about the weather conditions.
Occurrence of waterborne and parasitic diseases.	Health prevention measures to be included in the intervention with the supply of drinking water to the teams, availability of sanitation kits, awareness-raising on the theme of WASH.
The problem of access in the disaster areas with the destruction of infrastructure (buildings, electricity poles). Access is also limited due to climatic conditions which require suitable protective equipment.	Equip volunteers and the assessment team with protective equipment for the problems of access for evaluations and information collection, the NS will select the volunteers closest to the families geographically and the digitization of the tools will help to compensate for too much movement for the less accessible areas.
Interruption of the National Society's activities due to the end-of-year holidays.	The National Society is active throughout the year, and during crisis periods it mobilizes the teams involved to be present in the field, even during times of crisis.

Please indicate any security and safety concerns for this operation:

All staff must have personal protective equipment (PPE). Teams must not exceed the security perimeter. A rescue team will be deployed, and briefings and debriefings will be carried out every day.

Planned Intervention



Shelter Housing And Settlements

Budget: -

Targeted Persons: 1,500

Indicators

Title	Target
# of volunteers involved in raising awareness about shelters	25

Priority Actions

- Assessment of shelter needs and response approach.
- Market analysis for access to missing equipment for construction reinforcement
- Awareness of construction risks and evacuation assistance



Multi Purpose Cash

Budget: CHF 92,478

Targeted Persons: 1,500



Indicators

Title	Target
# of volunteers trained on Cash	25
# of market assessments conducted	1
# of needs assessments conducted	1
# of households receiving cash for shelter and household items	300
# of people who receive cash support in the targeted households	1,500

Priority Actions

- Questions about the feasibility of Cash will be addressed during the assessment to determine community preferences on the intervention approach.
- Evaluation of the markets and feasibility of Cash via airtel, including community preferences
- Launch of a contracting procedure for monetary cash with another Financial Service Provider.
- Distribution of Multipurpose cash (for shelter, household items and other health and food needs) in one shot.
- Supply chain and risk assessment
- Evaluation of the national and international supplier database for items
- Post Distribution Monitoring
- Capacity building of volunteers on the different modalities and conditions of Cash



Health

Budget: CHF 11,629

Targeted Persons: 1,500

Indicators

Title	Target
# of impregnated nets distributed	1,200
# of people sensitized	1,500

Priority Actions

- Rapid training of volunteers on epidemic prevention, psychological support
- First aid and psychological first aid
- Raising awareness among the population on waterborne diseases,
- Distribution of mosquito nets



Water, Sanitation And Hygiene

Budget: CHF 27,252

Targeted Persons: 1,500

Indicators

Title	Target
-------	--------



# of 5L liquid soap distributed	300
# of pieces of soap distributed	1,200
# of households receiving WASH support	300
# of shelter kits distributed	300

Priority Actions

- Information, education and communication materials will be developed and printed for hygiene and health promotion.
- Purchase and distribution of household hygiene and sanitation materials: Soap pieces, liquid soap, bleach, brush brooms, cleaning brooms,



Protection, Gender And Inclusion

Budget: CHF 1

Targeted Persons: 1,500

Indicators

Title	Target
% of the team involved in the intervention having been briefed on ERP and PSEA	60
% of feedback collected related to PGI, PSEA and child protection	100
% of sensitive feedback received that is handled and addressed appropriately	100

Priority Actions

- Coordination with other sectors to integrate Protection, Gender and Inclusion (PGI) by applying the PGI Minimum Standards in emergency settings across sectors, to ensure dignity, access, participation, and safety of communities, with data collection disaggregated by age, sex, and disability.
- Consultation with at-risk communities to inform and validate planned actions based on the evolving situation, in collaboration with Community Engagement and Accountability (CEA).
- Establishment of separate and safe discussion spaces or platforms for vulnerable groups and people with specific needs.



Risk Reduction, Climate Adaptation And Recovery

Budget: CHF 439

Targeted Persons: 1,500

Indicators

Title	Target
# of volunteer field visits per month	2
# of volunteers involved in DRR	25



Priority Actions

- Awareness campaign by volunteers on the risks associated with strong winds
- Information campaign on how to behave in the event of strong winds
- Raising awareness on the protection of property during the rainy season
- Raising awareness of simple techniques for reinforcing homes, particularly at the level of the roof, the base of the walls and the prevention of water infiltration.



Community Engagement And Accountability

Budget: CHF 7,347

Targeted Persons: 1,500

Indicators

Title	Target
# of community meeting	12
# of FGD conducted	12
% of feedback collected that are treated	100
# of volunteers trained on continuous assessment method	25

Priority Actions

- Briefing of volunteers on Community Engagement and Accountability (CEA)
- Organization of facilitated group discussions to collect information for the assessment and to present findings
- Information sharing with communities and inclusion in the beneficiary selection process
- Establishment of a feedback and complaints management system
- Community engagement in environmental sanitation activities



Secretariat Services

Budget: CHF 41,353

Targeted Persons: 7

Indicators

Title	Target
# of people deployed from the delegation	3
# of monitoring missions conducted	2
# of supply and distribution plans produced	1
# of volunteers trained on the different themes	1

Priority Actions

The IFRC cluster will provide technical support across the different sectors of activity, including:

- Cash Officer mission
- Remote support in logistics, communications, Community Engagement and Accountability (CEA), and Protection, Gender and Inclusion

(PGI)

- Monitoring missions by PMER, Programmes, and Finance teams
- Remote coordination through the establishment of an online platform for joint weekly monitoring between the National Society and the IFRC cluster
- Deployment of a surge personnel
- Support for the organization/facilitation of the DREF launch workshop
- Support for the subscription of volunteer insurance
- Support/facilitation of a lessons learned workshop



Budget: CHF 18,691

Targeted Persons: 1,500

Indicators

Title	Target
# of staff mobilized and deployed in branches for monitoring	4
# of personal protection kits for field volunteers (PPE and rain coat)	30
# of assessment missions conducted	1
# of monitoring missions conducted by the NS (Programme and Finance)	2
# of insured volunteers	25
# of volunteers trained on the different themes	25

Priority Actions

- Capacity building of volunteers and branch focal points on various thematic areas
- WASH, Health, Cash, Community Engagement and Accountability (CEA), and Protection, Gender and Inclusion (PGI)
- Principles of emergency shelter response
- Shelter cash assistance (conditionalities, monitoring, and verification)
- Dissemination of awareness-raising messages to beneficiary households
- Mobilization and deployment of teams for activities
- Monitoring and reporting of data from branches
- Production of an assessment report and possible update of the operation
- Post-distribution monitoring (PDM)
- Joint organization of a lessons learned workshop with the IFRC

About Support Services

How many staff and volunteers will be involved in this operation. Briefly describe their role.

To carry out this evaluation, 25 volunteers will be deployed in the department of Libreville. Four staff at the national headquarters will also have the role of supervising and participating in the implementation of the evaluation and 4 NDRT members will be deployed at the provincial level who will ensure the role of local coordination.

Within the National Society, it is not relevant to dissociate training too much, as it limits the possibilities of rotation when some volunteers withdraw — especially at the end of the year. As a result, all volunteers will be trained and then distributed according to their performance and experience, as assessed by the instructors, to cover the different specific activities. For the Cash activities, eight volunteers will be mobilized, while the others will support integrated awareness-raising actions. Only three focal points will be designated for the ERP and the CEA. For the PSS, the National Society has a dedicated team at the headquarters level. Similarly, focal



points exist for these different sectors within the National Society, with headquarters based in Libreville.

For the implementation of the operation, the other services will support the technical team. This is the case of:

- Logistics and purchasing which will coordinate with the IFRC Cluster logistics for the various items to be purchased as well as their delivery to the field
- APS (Psychosocial Support) Manager. Its role is to coordinate the assessment and psychological support of the victims and the volunteers involved in the operation; he also sets up listening units
- Monitoring and evaluation manager: he coordinates and plans the evaluation actions to be carried out in the field, he draws up the evaluation report and ensures that the evaluation tools are properly completed; he contributes to the implementation of indicators for decision-making; he analyses and interprets the results for statistical processing;
- Community Engagement and Admissibility Manager: its role is to collect community feedback, ensure that the DREF implementation team appropriates the CEA approach
- Health Manager: Coordinate health activities (distribution of mosquito nets, health promotion activities)
- WASH Manager: Coordinate WASH activities in the field (awareness-raising, distribution of kits)
- Financial Manager: his role is to monitor the financial situation on the course of the project and produce financial report. Ensures compliance with the management procedures of the IFRC and the CRG, develops the financial management tools of the activity.
- Budget control: his mission is to monitor the budget, the compliance of the purchasing procedure and participate in the production of the financial report.

Does your volunteer team reflect the gender, age, and cultural diversity of the people you're helping? What gaps exist in your volunteer team's gender, age, or cultural diversity, and how are you addressing them to ensure inclusive and appropriate support?

Respect for gender, age and cultural diversity issues will be at the heart of the selection of volunteers who will be engaged for the implementation of the activities of this operation, these issues will also be addressed in the activities of PGI and the CEA to ensure that these cross-cutting themes are well interwoven with other sectors during implementation,

Will surge personnel be deployed? If yes, please provide the role profile needed.

Yes

Yes, a resource person/Disaster management professional with mastery of evaluations and programme management will be deployed to provide support to the National Society for this evaluation and implementation. This deployment will last for 3 months.

If there is procurement, will it be done by National Society or IFRC?

Depending on the availability of WASH kits in the field and if CASH support is not possible, the IFRC cluster in Yaoundé and the National Society will work together to ensure that the IFRC's procurement procedures are followed.

How will this operation be monitored?

The NS will start with the definition of clear roles and responsibilities with precise renderings of each position of responsibility. Indeed, 4 supervisors from the local branches will be involved in the response for 3 months and will be responsible for reporting all information to Headquarters. Two monitoring missions are also planned each (funding and programmes), to allow good follow-up of activities and coordination with the field teams.

On the IFRC side, the deployed Surge will monitor the entire duration of its deployment and will work under the leadership of the Federation's GRC coordinator in Yaoundé. For those who are technical, the Cash Manager will follow up on the updating of the financial service provider's contract with the NS, while the other technical departments such as CEA and nance will provide support. The IFRC cluster PMER team will provide support to ensure the follow-up of this operation through the implementation of monitoring tools and mechanisms.

A one-day workshop on lessons learned will take place at the end of the operation. This workshop will bring together aid recipients, local authorities, partners, volunteers, the management team, CRG officials and the IFRC Delegation to assess the quality and relevance of the actions undertaken in this operation and thus inform future operations.

At the level of the Yaoundé cluster, technical support for the development of assessment tools and the analysis of the information collected will be provided by all sectors.

The CASH manager of the Yaoundé delegation will go to the beginning of the operation to support the analysis of the markets and the assessment of feasibility. It will also support the possible update of the service contract with Airtel to facilitate the response by CASH. This



update will make it possible to determine whether the answer will be by cash, voucher or if everything will have to be redirected towards in-kind distribution.

The logistics team works closely with the NS team for the procedures for the purchase of equipment and their transport to the field. Colleagues from the WASH, health, PMER, ECA, IGP, Communication and Cash sectors will provide remote support not only for the development of the evaluation tools, but also for the implementation of the operation.

The delegation will also ensure the follow-up throughout the operation and will accompany the updating and closing of this intervention through 3 staff members (CASH, programme and nance manager), ensuring the organization of a workshop of lessons learned.

Please briefly explain the National Societies communication strategy for this operation

To support the visibility of CRG actions, the NS will make its media pages available mainly on social networks. Strategic meetings with local leaders and authorities will also help promote the NS's actions. The volunteers in their mission and the visibility of the Red Cross' actions in the field.

Media coverage will be provided during the distributions to communicate on the CRG's actions on the communities.

A launch activity for the DREF will be carried out at the beginning of the operation.

The IFRC Communications team will provide support to the NS to produce the "One page" which summarizes and provides information about the operation and the production of all other communication tools.

The IFRC communication team will also support the MAF communication team in writing articles and documenting the operation and saving content on ShareRed. A communication mission will be organized.



Budget Overview



DREF OPERATION

MDRGA015 - GABON RED CROSS Windstorms

Operating Budget

Planned Operations	139,144
Shelter and Basic Household Items	0
Livelihoods	0
Multi-purpose Cash	92,478
Health	11,629
Water, Sanitation & Hygiene	27,252
Protection, Gender and Inclusion	0
Education	0
Migration	0
Risk Reduction, Climate Adaptation and Recovery	439
Community Engagement and Accountability	7,347
Environmental Sustainability	0
Enabling Approaches	60,044
Coordination and Partnerships	0
Secretariat Services	41,353
National Society Strengthening	18,691
TOTAL BUDGET	199,188

all amounts in Swiss Francs (CHF)



Contact Information

For further information, specifically related to this operation please contact:

National Society contact: Veronique TSAKOURA, National President, tsakourav2@yahoo.fr, +24174062834

IFRC Appeal Manager: Adesh TRIPATHEE, Head of Cluster Delegation, adesh.tripathee@ifrc.org

IFRC Project Manager: Josuane Flore TENE, Operation Manager, josuaneflore.tene@ifrc.org

IFRC focal point for the emergency:

Josuane Flore TENE TCHOKODEU, Disaster and Crisis Prevention, Response and Recovery (DCPRR) Coordinator,
josuaneflore.tene@ifrc.org, +237677098790

Media Contact: Muriel ATSAMA OBAMA, Communications Officer-French Web Content, Muriel.ATSAMA@ifrc.org, +237650610006

[Click here for the reference](#)

