



ARCS volunteers and IFRC carrying out assessments in Northern Afghanistan (Photo: IFRC)

Appeal No: MDRAF019	IFRC Secretariat Funding requirements: CHF 27 million Federation-wide Funding requirements: CHF 30 million¹	
Glide No: EQ-2025-000202-AFG	People affected: 1,411,000 people²	People to be assisted: 170,000 people³
DREF Allocation: CHF 1,000,000 New DREF request: CHF 1,000,000	Appeal launched: 3 September 2025	Appeal ends: 31 December 2027
Appeal Revision	Revision#:1	Date: 08/11/2025

¹ The Federation-wide funding requirement encompasses all financial support to be directed to the Afghan Red Crescent Society (ARCS) in response to the emergency. It includes the ARCS's domestic fundraising requests and the fundraising appeals of supporting Red Cross and Red Crescent National Societies (CHF 3 million), as well as the funding ask of the IFRC Secretariat (CHF 27 million, increased from CHF 22 million in the initial appeal). This comprehensive approach ensures that all available resources are mobilized to address the urgent humanitarian needs of the affected communities.

² People affected: An increase of 110,000 people compared to the initial appeal, reflecting those directly and indirectly impacted by the cumulative effects of successive severe shocks.

³ People targeted: increase of 20,000 people from the first appeal.

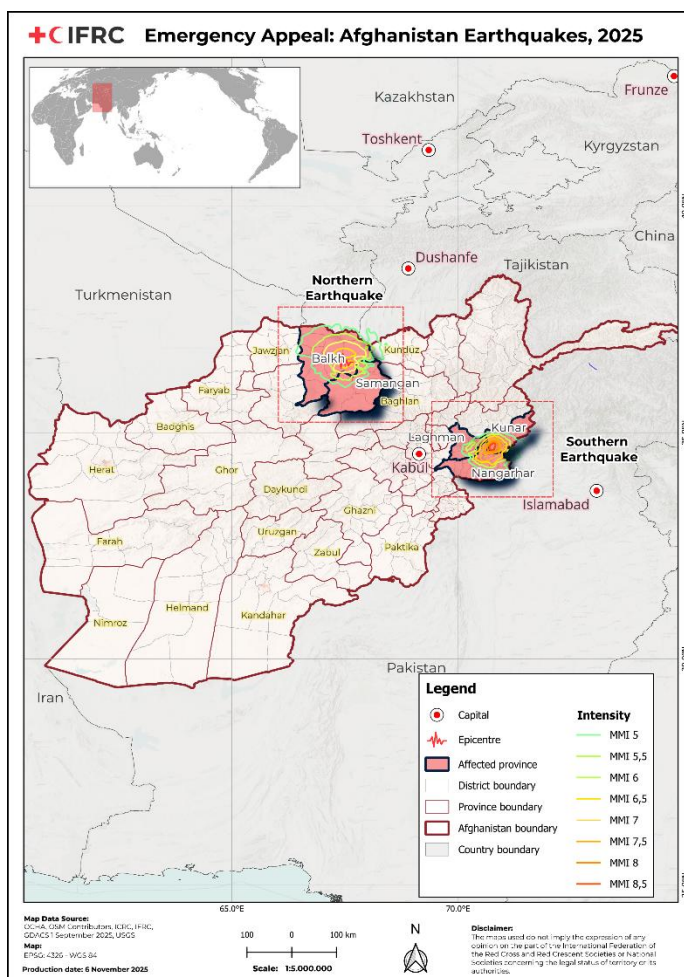
SITUATION OVERVIEW

Afghanistan is reeling from the compounded impact of two major earthquakes within just two months, which have further deepened an already fragile humanitarian crisis.

On 3 November 2025, a 6.3-magnitude earthquake struck northern Afghanistan, with its epicentre near Khulm town in Samangan Province, approximately 30 km east-southeast of Mazar-e-Sharif in Balkh Province. The tremors caused widespread destruction, leaving at least 26 people dead, 1,172 injured, and hundreds of homes reduced to rubble. Preliminary assessments indicate 1,319 houses damaged, including 305 completely destroyed alongside damage to health facilities⁴. These figures are expected to rise as assessments continue.

This disaster comes on the heels of the 31 August 2025 earthquake, which devastated Southeastern Afghanistan, claiming over 2,200 lives and displacing thousands of people. This earlier quake, measuring 6.0 magnitude, struck near Jalalabad, severely affecting Kunar and Nangarhar provinces, with impacts extending to Laghman, Nuristan, and Panjshir. Entire villages collapsed under the force of the tremors, and subsequent aftershocks compounded the destruction.

These earthquakes struck at a time of deep crisis in Afghanistan. A prolonged economic downturn



reduced international assistance, and large-scale returns from neighbouring countries have already left millions of people in need of humanitarian support.

EMERGENCY APPEAL REVISION

In light of the additional devastation caused by the second earthquake, this Emergency Appeal is being revised to scale up and sustain the response to meet the heightened humanitarian needs across the affected areas. The revision includes an increase in the overall secretariat funding ask from CHF 22 million to CHF 27 million to support the expanded scope of the operation.

The revised funding requirements aim to support both the scale-up of the emergency response to address new humanitarian needs of an additional 20,000 people following the second earthquake, and the continuation of essential services under the ongoing operation. It will also ensure continued resources for the transition towards recovery-oriented activities, helping affected populations restore livelihoods and strengthen community resilience.

⁴ <https://reliefweb.int/report/afghanistan/earthquake-northern-afghanistan-who-situation-report-no-3-november-2025>

TARGETING

The cumulative impact of two major earthquakes—the 31 August 2025 event in southeastern Afghanistan and the 3 November 2025 event in northern Afghanistan—has caused widespread destruction of homes, infrastructure, and livelihoods across multiple provinces.

- **Southeastern Afghanistan** (31 August): As of early September, assessments indicated 12,000 households (approximately 84,000 people) directly affected by loss of family members or injuries, and an estimated 1.3 million people across Laghman, Kunar, Nangarhar, and Nuristan provinces experienced partial or complete destruction of homes and loss of livelihoods, including agricultural land and livestock.
- **Northern Afghanistan** (3 November): Preliminary data shows 795 houses damaged or destroyed in Balkh and Samangan provinces, with at least 27 fatalities and 945 injuries. These figures are expected to rise as assessments continue.

While overall needs are vast, this operation will prioritize immediate life-saving assistance and longer-term recovery support for the most severely affected households in both regions.

The Federation-wide target is to reach 170,000 people over a 24-month period, focusing on:

- Immediate lifesaving needs
- Shelter and housing reconstruction
- Health and WASH services
- Livelihood restoration for households that lost agricultural assets and livestock

The Afghan Red Crescent Society (ARCS) continues to coordinate with local authorities and partners to develop and revise inclusive targeting criteria, ensuring assistance reaches the most vulnerable groups, including women-headed households, persons with special needs and/or disabilities, and marginalized communities. The scope of interventions will vary by geographic location, level of damage, and the presence of other humanitarian actors to avoid duplication and maximize impact.

PLANNED OPERATIONS

The revised Emergency Appeal aims to strengthen and expand support to the Afghan Red Crescent Society (ARCS) in responding to the recent earthquake in northern Afghanistan, while maintaining assistance to communities affected by earthquake on the 31 August 2025. The revision extends operational coverage to newly impacted areas in Balkh and Samangan provinces, where humanitarian needs have sharply increased following the November earthquake. Through this revision, the IFRC's strategy seeks to reinforce ARCS's response capacity and ensure an integrated approach that addresses both immediate humanitarian needs and early recovery priorities across the following sectors:

Integrated assistance *(Shelter, Livelihoods and Multi-purpose Cash)*



The revised operation will continue to deliver a comprehensive package of emergency relief and longer-term recovery support, integrating shelter, health, livelihoods, WASH, and multipurpose cash assistance to meet families' immediate needs while helping them recover and rebuild their lives with dignity.

The distribution of essential household items—including items such as tarpaulins, blankets, dignity kits, hygiene kits and kitchen sets—will continue to address the immediate needs of affected households, alongside winterization support such as insulated shelter materials and bedding to help families withstand the harsh conditions of the coming months.

As recovery gains momentum, the operation is advancing housing options and livelihood interventions to help families restore stability and rebuild their lives. Multipurpose cash assistance continues to provide flexibility for meeting essential needs, while livelihood initiatives are being identified to create income opportunities and support community rehabilitation. These efforts will be complemented by vocational training and income-generating activities through ARCS safe spaces, particularly aimed at empowering vulnerable women and strengthening household resilience.



Health & Care including Water, Sanitation and Hygiene (WASH)
(Mental Health and Psychosocial Support / Community Health)

The revised operation will ensure the delivery of comprehensive, life-saving health interventions across newly earthquake-affected areas in Balkh and Samangan provinces, while maintaining continued health support for communities impacted by the earlier earthquake in the east. It aims to provide an integrated, life-saving response combining health, psychosocial support, and essential basic services for the most affected populations.

Health interventions prioritize immediate care, including first aid, trauma management, pre-hospital services such as ambulance support and referral transport, to ensure timely access to functioning health facilities. Special attention will be given to vulnerable groups—children, pregnant women, the elderly, persons with disabilities, and individuals with non-communicable diseases—by ensuring continuity of essential medicines and preventing complications.



To reduce secondary health risks, the operation strengthens disease prevention and control, targeting communicable diseases such as water-borne, vector-borne, and vaccine-preventable illnesses, particularly among populations living in temporary shelters. Services are delivered through Mobile Health Teams (MHTs) and supported by Community Health Volunteers (CHVs), who provide health education, psychosocial support, and community outreach. Coordination with the Ministry of Public Health ensures alignment and complementarity with national response efforts.

Integrated WASH support has been established to safeguard health and dignity by ensuring access to clean water, safe storage through jerry cans, and distribution of hygiene kits, combined with hygiene promotion to encourage safe practices. Repairs to damaged water systems and latrine construction linked to shelter interventions promote safe living conditions. This integrated approach addresses urgent health needs, reduces the risk of disease outbreaks, and supports recovery in the hardest-hit communities.



Protection and Prevention
(Protection, Gender and Inclusion (PGI), Community Engagement and Accountability, Migration, Environmental Sustainability, Risk Reduction, Climate Adaptation and Recovery, Education)



Aligned with the IFRC Minimum Standards on Protection, Gender and Inclusion (PGI) in Emergencies and the Movement's commitments to Community Engagement and Accountability (CEA), the revised operation strengthens protection and inclusion services across earthquake-affected areas. These efforts

aim to mitigate risks such as gender-based violence, family separation, human trafficking, child labour, abuse, and barriers to essential services, ensuring dignity, safety, and equitable access, particularly for the most vulnerable.

Female ARCS volunteers have been deployed to support assessments, deliver essential health services, and respond to the urgent needs of their communities. Their engagement ensures that the voices and priorities of women, children, and other vulnerable groups meaningfully inform the operational strategy. They also play a key role in facilitating access to care, support, and information, helping to uphold protection and inclusion throughout the response and recovery phases. Identified protection concerns are referred to case management actors through a safe referral pathway, supported by strengthened monitoring and reporting mechanisms.

Enabling approaches

The sectors outlined above are supported and enhanced by the following enabling approaches:

Coordination and Partnerships



The Afghan Red Crescent Society (ARCS) and the IFRC work in close coordination with public authorities, the Humanitarian Country Team (HCT), and other humanitarian partners to ensure a coherent and needs-driven response. Efforts focus on ensuring that the voices, priorities, and needs of affected communities inform decision-making at all levels. Through sustained engagement and advocacy, ARCS continues to position itself as a key national humanitarian actor, promoting a response that places the most vulnerable—those who have lost homes, loved ones, and livelihoods—at the centre of recovery and resilience efforts.

The ARCS is also actively engaging with the international donor community through humanitarian diplomacy to help shape policies and decisions that reflect the urgency on the ground through joint planning, partner calls and field updates to demonstrate the impact of collective action while ensuring that support reaches those who need it most.

Shelter Cluster Coordination



The IFRC actively engages in the Afghanistan Shelter Cluster, co-led by UNHCR and the International Organization for Migration, to ensure that collective efforts focus on areas of greatest needs and adhere to the key principle of effective coordination. The ARCS and IFRC contribute to Cluster snapshots, which provide critical data on key indicators such as mobilised resources and people supported. The IFRC will also engage in Shelter Technical Working Groups established to define technical specifications for safer construction practices.

IFRC Secretariat Services



The IFRC will continue to support the ARCS through strategic coordination, emergency communications, humanitarian diplomacy, resource mobilisation, supply chain and procurement, and technical expertise across key operational sectors. All procurement required for the operation will be conducted by the IFRC Secretariat. Additionally, the IFRC Secretariat has engaged four financial service providers (FSPs) to channel cash transfers to community members. A Quality and Accountability team is in place to

ensure that community participation, life-saving information, open communication, misinformation management, and established feedback mechanisms are integrated into the holistic CEA approach for this operation. The team will also contribute to closely monitoring implementation and enhancing measures to improve organisation-wide performance. Furthermore, a Compliance, Risk Management, and Safeguarding unit is in place to strengthen adherence to internal and external compliance requirements, respond to sexual exploitation and abuse, including misconduct related to child safeguarding, and ensure that all possible risks are identified and mitigated. Risks analysed and deemed outside the risk appetite will be escalated to the regional level.

Possible Rapid Response Alerts may be requested to reinforce ARCS operational capacity in the emergency response.

National Society Strengthening



The Emergency Appeal will support capacity strengthening activities in disaster preparedness, response and recovery efforts, with a particular branch development focus on providing refresher training to ARCS' National Disaster Management (NDRT), disaster response unit (DRU), and Branch Disaster Management Teams (BDRT), as well as volunteers.

The planned response reflects the current situation and is based on the information available at the time of this Revised Emergency Appeal launch. Details of the operation will be updated through the Revised Operational Strategy to be released in the upcoming days. The Revised Operational Strategy will also provide further details on the Federation-Wide approach which includes response activities of all contributing Red Cross and Red Crescent National Societies, and the Federation-wide funding requirement.

After 31 December 2027, the response activities will continue under the IFRC Network [Afghanistan Country Plan](#), which provides an integrated approach to ongoing emergency response, recovery, and longer-term programming tailored to the country's needs, while also providing a Federation-wide perspective on actions in Afghanistan. This aims to streamline activities under one plan while ensuring that the needs of those affected by the disaster are met in a way that is both accountable and transparent, with timely information shared if the crisis-specific response needs to be extended beyond the above-mentioned period.

RED CROSS RED CRESCENT FOOTPRINT IN COUNTRY



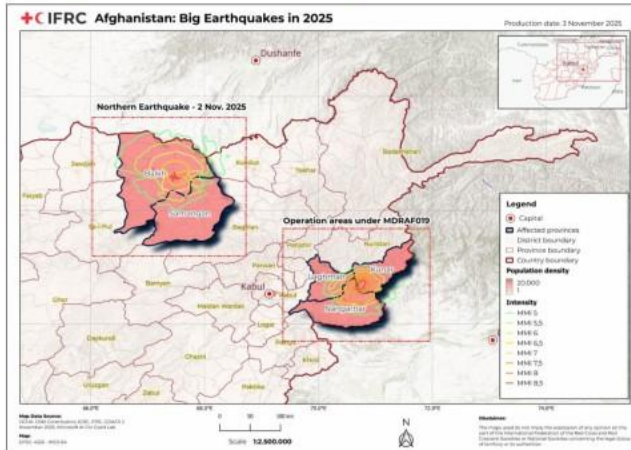
Afghan Red Crescent Society

AFGHANISTAN EARTHQUAKES

31 August 2025



Afghanistan Earthquake Intensity



National Society Capacity



3,909
Staff



26,488
Volunteers



34
Provincial Branches



7
Regional Offices



4
Regional Warehouses



33
BDR team



46
Health Centers



40
Health Camps



97
Mobile Health Teams



8
Marastoons

ARCS - Nangarhar Province



30
Staff



16
BDRTs Members



1
Marastoons

This office covering Nangarhar, Nuristan, Laghman and Kunar (4 province).

ARCS - North Region



23
Staff



18
BDRTs Members

This office covering Samangan, Balkh, Jawaz Jan, Faryan and Sar-e-pul (5 province).

ARCS - Samangan Province



25
Staff



16
BDRTs Members

ARCS - Balkh Province



34
Staff



17
BDRTs Members

IFRC Membership coordination

The ICRC, IFRC and in-country Participating National Societies (PNSs) - Danish Red Cross, Norwegian Red Cross, Qatar Red Crescent, and Turkish Red Crescent - are supporting the ARCS, as per their areas of expertise and available capacity, with technical, financial and in-kind support. In response to the devastating earthquakes the IFRC is working closely with PNSs to coordinate efforts and keep everyone aligned under the Ways of Working approach. Several PNSs that are not present in the country expressed initial willingness to support ARCS each contributing based on their strengths and areas of expertise.

The in-country PNSs provide immediate support in primary healthcare, medicines, hygiene kits, distribution of hot meals and clean water, MHPSS, CVA assistance and financial resources.

Additionally, ICRC has supported the ARCS with flexible funding, tents, body bags, RFL emergency kits, 3 dressing and 2 intravenous packages, in addition to supporting Nangarhar Regional Hospital and Kunar Provincial Hospital with medical supplies.

Red Cross Red Crescent Movement Coordination

A Movement Coordination Agreement (MCA) is in place in Afghanistan, with all Movement Partners supporting the ARCS in its central coordination role. The IFRC is reinforcing ARCS' response capacity and aligning support from its Membership, while the ICRC provides security analysis, guidance on emblem use, and joint messaging, regional support on the Safer Access Framework, as well as support to Restoring family link (RFL), health related

training program (HRTP), Weapon Contamination (WeC) and complementary programme support to the Movement response efforts.

The ARCS led Emergency Operations Centre (EOC), activated on 1 September 2025, ensures operational coordination among in-country Movement Partners. It is being strengthened to provide clear data on needs, resources received and used, and to guide the collective way forward in this sensitive context. Given the sensitivity of the affected region, joint risk analysis will be undertaken.

Technical Coordination at the programmes level also takes place to ensure complementarity and alignment.

External coordination

ARCS, as auxiliary to the public authorities is coordinating closely and complementing the assistance provided to affected communities by the Afghanistan National Disaster Management Authority (ANDMA). The IFRC supports external coordination on the humanitarian situation as an Observer to the Humanitarian Country Team (UN HCT). The IFRC, ARCS, and in-country PNSs collaborate with other humanitarian organisations and key agencies as members of the various Clusters. Additionally, the IFRC and ARCS closely coordinate with key ministries such as the Ministry of Public Health, Ministry of Rural Rehabilitation and Development, Ministry of Education and Afghanistan National Disaster Management Authority, to support ongoing response activities in the country.

Contact information

For further information, specifically related to this operation please contact:

At the Afghan Red Crescent Society

- **Acting Secretary General:** Molavi Ruhullah Mohmand; email: sg@arcs.af
- **International Relations Department:** email: ir@arcs.af

At the IFRC Country Delegation Afghanistan:

- **Head of Delegation:** Dr Hosam Faysal, email: hosam.faysal@ifrc.org
- **Interim Deputy Head of Delegation:** Homa Nader, email: homa.nader@ifrc.org

At the IFRC Asia-Pacific Regional Office in Kuala Lumpur:

- **Regional Director:** Alexander Matheou; email: alexander.matheou@ifrc.org
- **Deputy Regional Director:** Juja Kim; email: juja.kim@ifrc.org
- **Head of Health, Disaster, Climate and Crisis Unit:** Joy Singhal; email: joy.singhal@ifrc.org
- **Lead of Evolving Crises and Disasters:** Felipe Delcid; email: felipe.delcid@ifrc.org
- **Large Scale Disasters and Crises Coordinator:** Anne-Sophie Pétri; email: anne-sophie.petri@ifrc.org
- **Operations Coordinator:** Nusrat Hassan; email: opscoord.southasia@ifrc.org
- **Regional Communications Manager:** Afrhill Rances; email: afrhill.rances@ifrc.org

At IFRC Geneva:

- **Senior Officer Operations Coordination:** Christina Duschl; email: christina.duschl@ifrc.org

For IFRC Resource Mobilisation and Pledges support:

- **Senior Officer Partnerships-in-Emergencies:** Mohd Hisham Ahmad Nazri; email: PartnershipsEA.AP@ifrc.org

For In-Kind Donations and Mobilisation table support:

- **Manager Regional Logistics Unit:** Nuraiza Khairuddin; email: nuraiza.khairuddin@ifrc.org

Reference



Click here for:

- [IFRC Emergency landing page](#)