



EQUATORIAL GUINEA



2026-2027 IFRC network country plan

11 February 2026

In support of the Red Cross of Equatorial Guinea



8

National Society branches



18

National Society local units



28

National Society staff



500

National Society volunteers

People to be reached in 2026



26,000

Climate and environment



20,000

Disasters and crises



48,000

Health and wellbeing



20,000

Migration and displacement



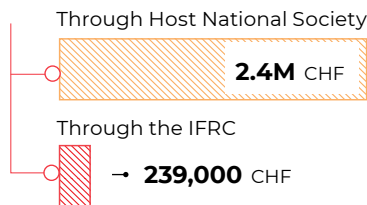
20,000

Values, power and inclusion

IFRC network Funding Requirements

2026

Total 2.6M CHF



2027

Total 2.6M CHF

Projected funding requirements

IFRC Appeal code

Longer-term needs:

MAAGQ002

Hazards



Floods



Storms



Landslides



Sea level rise



Diseases

IFRC network multi-year focus

Longer term needs

- Disaster preparedness
- Climate change adaptation
 - Health
- Water, sanitation and hygiene
 - Social inclusion

Capacity development

- Communications
- Resource mobilization
- Digital transformation
 - Risk management
- Financial management

Key country data links

INFORM Climate Change Risk Index **Medium**

Human Development Index rank **133**

World Bank Population figure **1.9M**

World Bank Population below poverty line **51%**



The Red Cross of Equatorial Guinea supported the flood-affected families with water, sanitation, and hygiene (WASH) kits. (Photo: The IFRC)

Detailed funding requirements

	2026		2027	
	Host National Society	IFRC	Host National Society	IFRC
Longer-term needs				
Climate and environment	282,000	28,000	282,000	28,000
Disasters & crises	225,000	22,000	225,000	22,000
Health & wellbeing	1M	100,000	1M	100,000
Migration & displacement	500,000	50,000	500,000	50,000
Values, power & inclusion	199,000	20,000	199,000	20,000
Enabling local actors	180,000	18,000	180,000	18,000
Total	2.4M	239,000	2.4M	239,000

See back page for explanatory note on funding requirements

NATIONAL SOCIETY PROFILE

The **Red Cross of Equatorial Guinea** was established in October 1985 by presidential decree (Circular No. 579) was admitted to the IFRC in 1995.

The National Society plays a critical role in supporting government efforts to meet humanitarian needs and promote the well-being of the population. It is established in accordance with national legislation, as an auxiliary to the health services of the armed forces, in accordance with [Article 26 of the First Geneva Convention of 1949](#). It thus benefits from legal personality. Its headquarters are located in Malabo, the capital of the Republic of Equatorial Guinea.

The National Society is represented in all eight provinces of the country. Today, the National Society strives to equip itself with the necessary resources to fulfil its role as an auxiliary of the public authorities, and to once again become a reliable organization for the population, humanitarian actors, and the government.

In 2023, the National Society received funding from the IFRC's Capacity Building Fund (CBF) to improve its financial management, risk management capacities and strengthen its existing revenue-generating projects. Unforeseen delays have resulted in an extension of the implementation of this grant until August 2025.



Map of the regional branches of the Red Cross of Equatorial Guinea

The map does not imply the expression of any opinion on the part of the IFRC or the National Society concerning the legal status of a territory or its authorities

The National Society is focused on five key commitments to ensure its own development and to provide meaningful humanitarian service in the country which aligns with the commitments of all African National Societies presented at the 10th Pan African Conference held in Nairobi in 2023. These commitments are:

- Develop minimum standards of effective National Societies and branches and implement a transformative plan for networks to improve the quality of governance and management
- Scale up the National Society development planning and implement solutions for financial sustainability, including core cost recovery mechanism and a peer-to-peer exchange program to support digitization, financial innovation, and risk management

- Strengthen youth participation in the National Society's decision-making structures at all levels, and allocate resources for local youth actions
- Invest in women leadership, improve gender balance, diversity and inclusion of the National Society
- Increase the resilience of African communities by rolling out National Society-led scale up plans that are jointly developed with governments and are in line with the Pan-African initiatives that support country priorities and meet community needs

In 2024, the Red Cross of Equatorial Guinea reached more than 8,000 people through its interventions under health.

IFRC NETWORK ACTION

JOINT SITUATIONAL ANALYSIS

The Republic of Equatorial Guinea is a Spanish-speaking country located on the west coast of Central Africa, with an area of 28,000 square kilometres and a total population of more than 1.4 million people. The country is made up of two regions: an island region and a continental region. The country consists of a mainland territory, Rio Muni, which is bordered by Cameroon to the north and Gabon to the east and south, and five small islands, Bioko, Corisco, Annobon, Elobey Chico (Small Elobey), and Elobey Grande (Great Elobey). The districts of Malabo and Bata are the political and economic capitals of the country.

Equatorial Guinea faces several social challenges, including poverty, inequality, and limited access to basic services. The country has one of the highest rates of inequality in the world, with the richest 10 per cent holding more than 70 per cent of the national wealth.

Poverty is widespread, with more than half of the population living below the international poverty line. Access to education

and health care also remains limited, especially in rural areas. Although Equatorial Guinea is classified as a middle-income country, its economy relies heavily on oil and gas exports. The country remains vulnerable to external shocks, including fluctuations in oil prices.

The economy has grown steadily in recent years, but poverty and inequality persist. The Government has made some progress in reducing poverty, but more efforts are needed to improve the living conditions of the population.

In February 2023, Equatorial Guinea declared an outbreak of Marburg virus disease (MVD), a highly virulent viral haemorrhagic fever. It was the first time that this disease was detected in the country.

Like other parts of Africa, Equatorial Guinea continues to face threats from natural hazards that adversely affect food security, health, and livelihoods. In the last decade, droughts, floods, pests, and epidemics have significantly affected the region, eroded resilience, and contributed to people being displaced both internally and across borders.

STRATEGIC PRIORITIES



Climate and environment

Equatorial Guinea has a humid equatorial climate, characterized by stable temperatures all year round (between 25°C and 27°C) and abundant rainfall. Coastal areas, such as Malabo and Bata, receive particularly high rainfall. However, the country is facing significant climate change impacts, including a gradual increase in average temperature, an increase in the intensity of heat events, as well as increased variability in rainfall patterns. [Projections of 2050](#) indicate a temperature increase between +1.5°C and +2.8°C, as well as an increased risk of flooding, landslides, coastal erosion and extreme weather events.

The impacts of these changes are evident in several sectors. In the area of health, heat and flooding increase the prevalence of vector-borne diseases such as malaria, waterborne diseases such as cholera, and respiratory diseases. The agricultural sector, which is mainly based on rain-fed agriculture, is affected by declining productivity, disruption of the planting schedule, soil erosion and the proliferation of pests. Infrastructure is frequently damaged, including roads, housing and drainage systems in urban areas. Water resources are becoming more uncertain, both in quantity and quality, due to periods of drought alternating with episodes of extreme rainfall. Energy production, mainly hydroelectric, is also vulnerable to rainfall variability.

The populations most exposed to these effects are poor urban communities living in areas at risk (low-lying flood zones or unstable hills), rural farmers, as well as women, children and the elderly. The most affected regions vary. Coastal areas suffer from erosion and rising sea levels, while continental areas (Río Muni) face deforestation and landslides.

With regard to land cover and use, about 55 per cent of the national territory is covered by tropical forests, particularly in the mainland. However, rapid urban expansion, particularly in Bata and Malabo, is [reducing natural areas](#).

[Environmental degradation](#) is intensifying in the country. Deforestation is caused by logging (often illegal), extensive agriculture, and infrastructure projects. Agricultural land is being depleted due to erosion and the lack of sustainable farming techniques. Water pollution is amplified by offshore oil activities, while solid waste is only partially managed in urban areas, contributing to high health risks. Biodiversity is also at risk, especially in the forests of the Congo Basin, where several species (great apes, endemic birds) are threatened by habitat destruction and poaching.

Institutionally, Equatorial Guinea submitted an updated [Nationally Determined Contribution \(NDC\)](#) in 2021 under the Paris Agreement, with commitments to reduce greenhouse

gas emissions and adapt to the effects of climate change. A National Adaptation Plan (NAP) is being developed, although the information available is limited. The country has also adopted a [National Biodiversity Strategy](#). On the legal level, an environmental protection law exists, but its implementation remains weak due to limited human and technical resources.

Multi-year high level objectives of the National Society

The main objective of the National Society will be to provide staff and volunteers with the necessary skills to carry out mobilization and urgent actions to combat the climate crisis in the country, and to carry out information, communication, and emergency actions with the populations of the communities to better face the climate and environmental crisis. The other priority is climate-smart programming.

The Red Cross of Equatorial Guinea is part of the [IFRC Global Climate Resilience Programme](#), which aims to foster an unprecedented scale-up in locally led climate-smart disaster risk reduction and adaptation efforts to prevent and reduce climate-related disaster impacts and build community-level climate resilience. The programme aims to support 500 million people in 100 of the most climate-vulnerable countries, focusing on the least supported and marginalized communities. This holistic, multi-year programmatic approach consists of four operational pillars: (1) scaling up climate-smart disaster risk reduction, [anticipatory action](#), and preparedness; (2) reducing the public health impacts of climate change; (3) addressing climate displacement; and (4) enabling climate-resilient and ecosystem services. In line with the first [IFRC Pan-African initiative on Tree Planting and Care \(TPC\)](#), and with support from the IFRC, the National Society will advocate with authorities for reforestation through programmes such as One Pupil, One Tree.

As part of its commitment to fight the effects of climate change and strengthen community resilience, the Red Cross of Equatorial Guinea is defining strategic objectives for the year 2026 to strengthen its capacities, promote innovative community actions and support the most vulnerable populations in the face of environmental challenges. These objectives include:

- Strengthen and institutionalize climate and environmental capacities at all levels of the National Society to enable effective and sustainable community mobilization and response
- Increase [community-based risk reduction](#) including [early warning early action](#) systems and climate-smart adaptation

- Building public health resilience to climate risks and improving health services at the community level
- Supporting climate-resilient [livelihoods and food security](#) for vulnerable and marginalized populations
- Advocate for strengthened climate policies and mobilize partnerships to improve national and local climate resilience frameworks
- Promote climate-smart agricultural practices and diversification of income sources to reduce vulnerability
- Facilitate access to climate-smart technologies and financial services for smallholder farmers and vulnerable groups
- Collaborate with the IFRC, government, civil society, and the private sector to mobilize resources and knowledge

Planned activities in 2026

- Develop and implement [community-based early warning systems](#) adapted to local climatic hazards
- Promote [Nature-based Solutions](#) such as reforestation, sustainable land management and ecosystem restoration, building on the 'One Volunteer, One Hundred Trees' initiative
- Strengthen collaboration with health authorities to integrate climate risks into health planning and emergency preparedness

Longer-term support from the IFRC network

The IFRC will provide the Red Cross of Equatorial Guinea with technical assistance and training on climate change adaptation and disaster risk reduction. It will support the development of national climate and disaster risk management strategies, and collaborate with other actors, such as governments, international organizations, and the private sector, to address the climate and environmental crises. The IFRC will also help build resilience to the impacts of climate change by improving access to [water, sanitation, and hygiene](#) (WASH), protecting natural resources and ecosystems, promoting sustainable livelihoods, and raising awareness of climate change and its impacts.



Disasters and crises

For real-time information on IFRC emergencies, visit IFRC GO page [Equatorial Guinea](#).

One of the most frequent natural hazards in Equatorial Guinea is [floods](#). In August 2025, persistent heavy rains caused [significant flooding in Luba](#) (Bioko South) and affected several districts of Malabo. More than 1,500 people were directly affected, with homes damaged and families displaced.

Areas like the Litoral province are already identified as hotspots, with further anticipation that Wele-Nzas and the island of Bioko will also become highly affected by future climate conditions. On an annual basis, the areas affected by floods contribute to about 0.14 per cent of the country's GDP, corresponding to about 30 million US dollars a year.

Climate variability also leads to [occasional droughts](#) affecting agricultural production and the availability of drinking water, mainly in rural areas. Environmental degradation, such as deforestation and soil erosion, exacerbates these risks by increasing the likelihood of landslides and erosion. In addition, oil and extractive activities generate technological risks, particularly in terms of environmental pollution.

To date, Equatorial Guinea has not faced any major armed conflict or a protracted humanitarian crisis. However, recent episodes of localized flooding have caused temporary displacement and property losses. Rapid population growth in urban areas puts

additional pressure on infrastructure and essential services, increasing vulnerabilities to environmental risks.

Impacts on populations include disruptions to livelihoods, contamination of water resources, and an increase in waterborne diseases after floods and other natural disasters. Rural households, which are highly dependent on rain-fed agriculture, are particularly vulnerable to climate variability, resulting in periodic food insecurity. Humanitarian needs remain moderate but could increase if climate and demographic trends persist.

Food security in Equatorial Guinea, while generally stable, remains vulnerable to climate shocks. The rural population depends mainly on rain-fed agriculture, which is sensitive to droughts and floods. [Regional data](#) indicates that these vulnerabilities could increase with climate change, highlighting the need to adopt resilient agricultural strategies.

Multi-year high-level objectives of the National Society

The National Society aims to:

- Increase the resilience of communities to disasters through community risk information, developing contingency plans, and training staff and volunteers, particularly in [enhanced vulnerability and capacity assessment](#) (EVCA)

- Support communities in being better prepared for timely and effective mitigation, response and recovery to crises and disasters, which includes early action
- Carry out readiness and pre-positioning activities by establishing [early action protocol](#) and training community [early warning early action](#) groups on their roles and responsibilities jointly with other stakeholders

Planned activities in 2026

- Conduct [enhanced Vulnerability and Capacity Assessments](#) (eVCA) in at-risk communities
- Implement and regularly update contingency plans at national and community levels including the implementation of a national disaster risk management policy
- Create and operationalize early warning and early action systems with the participation of communities
- Pre-position emergency supplies in high-risk areas
- Collaborate with meteorological services and stakeholders for climate data sharing
- Implement community-led climate change adaptation pilot projects

Longer-term support from the IFRC network

The IFRC will strengthen the capacity of the Red Cross of Equatorial Guinea to respond to new disasters and crises, reduce the ongoing risks, and support recovery. The IFRC will also ensure that the National Society's involvement in [Pan-African Initiative: Zero Hunger](#).

IFRC mechanisms such as the Disaster Response Emergency Fund (IFRC-DREF) and Emergency Appeals will be drawn on as needed for the National Society to respond to disasters and crises. In 2025, IFRC provided DREF allocations for an emergency in the country. The DREF allocation has been described below:

[IFRC-DREF Equatorial Guinea Luba Floods 2025](#): the DREF allocation of CHF 185,479 in August 2025 supported the Red Cross of Equatorial Guinea in assisting more than 1,500 people affected by sudden onset of floods. The National Society supported the targeted people over a five-month period with interventions covering the health and WASH sectors, with a cross-cutting approach integrating the ECA (Communication with Communities) and PGI (Protection, Gender and Inclusion) components.



Health and wellbeing

Equatorial Guinea's National Health Development Plan identifies [malaria](#), [HIV/AIDS](#), and [tuberculosis](#) as the main diseases of concern, reflecting the country's persistent challenges in the face of communicable diseases and structural weaknesses in the health system. These three diseases remain the main causes of morbidity and mortality, especially among vulnerable groups such as children under five years of age and populations living in rural areas.

In 2025, Equatorial Guinea continued to face a high burden of HIV/AIDS. Prevalence among adults aged 15 to 49 remains estimated at [7.3 per cent](#), a relatively stable figure since 2020. About [62,000 people](#) will be living with HIV in the country in 2025.

In terms of treatment, progress remains slow but notable. Coverage of antiretroviral therapy (ARVs) increased from 41 per cent in 2022 to about 49 per cent in 2023, reflecting a modest improvement, but still well below recommended targets. It is also reported that nearly [2,800 AIDS-related deaths](#) are recorded each year, highlighting the need for enhanced care.

Regarding the prevention of mother-to-child transmission (PMTCT), coverage [reached 74 per cent](#) of pregnant women living with HIV on antiretroviral therapy in 2014.

Access to health care remains highly unequal. Services are highly centralized in major cities like Malabo and Bata, leaving rural and island areas underserved. Vulnerable populations, including pregnant women, children, and people living in remote forest areas, face persistent barriers to access. Natural disasters and epidemics such as cholera, measles, and COVID-19 regularly disrupt access to care in several regions.

Vaccination status remains a concern. Many children in remote areas are not vaccinated or are incompletely vaccinated. Despite the efforts of the Ministry of Health, vaccination coverage remains insufficient. There are still many 'zero dose' children, especially in rural areas. Chronic malnutrition also affects a large proportion of children under the age of five, due to food insecurity, lack of access to clean water and inadequate feeding practices.

Noncommunicable diseases are emerging rapidly without structured community-based testing and care systems. Access to water, sanitation and hygiene (WASH) is limited, especially outside urban centres, with a high risk of waterborne diseases accentuated by seasonal flooding. The lack of WASH infrastructure in schools and health centres compounds these vulnerabilities.

Multi-year high-level objectives of the National Society

The Red Cross of Equatorial Guinea's main objectives in the coming years is to contribute to the progressive and sustainable improvement of health conditions for vulnerable communities throughout the country. It aims to strengthen the National Society's capacities in water, sanitation, and hygiene (WASH). In order to bring an overall improvement in its programmatic interventions and its impact on the community, the National Society will:

- Improve community health and water, sanitation, and hygiene (WASH) outcomes through strategic planning and policy advocacy
- Improve access to health services for vulnerable groups, especially people living with HIV/AIDS
- Strengthen the capacity of the National Society for the implementation of sustainable health and WASH interventions

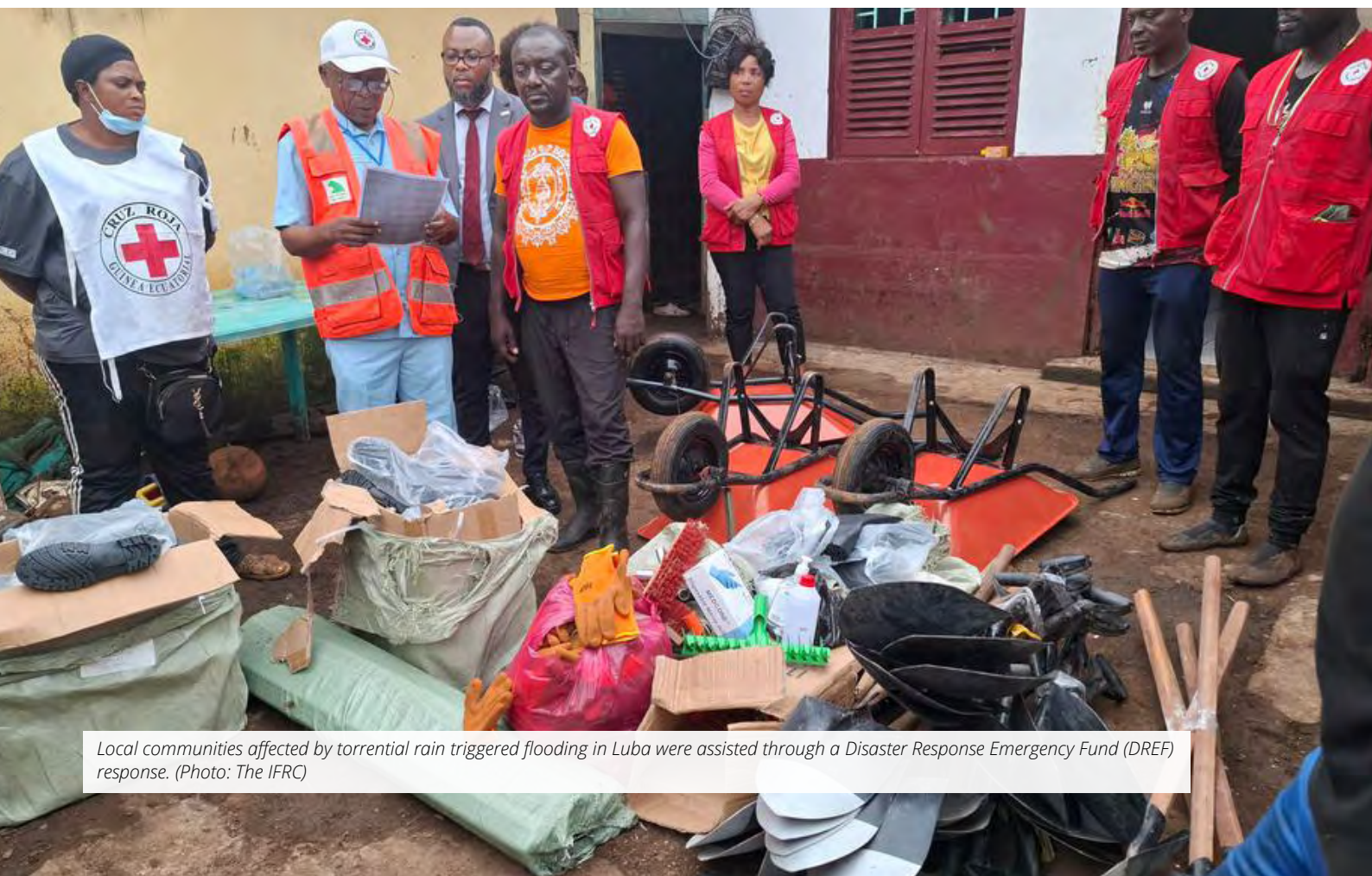
Planned activities in 2026

- Finalize and launch the National Society's health and WASH strategy
- Engage in dialogue with government stakeholders to advocate for the integration of Red Cross health and WASH programmes into national health and development plans

- Organize advocacy campaigns and meetings with relevant stakeholders to promote voluntary blood donation at the national level
- Establish community-based antiretroviral treatment (ART) distribution points to reach patients facing stigma and barriers to accessing health facilities
- Conduct regular awareness campaigns to reduce stigma and discrimination against people living with HIV/AIDS
- Organize capacity building workshops for staff and volunteers on health promotion, good WASH practices and community mobilization
- Develop monitoring and evaluation tools to measure the progress and impact of health and WASH interventions

Longer-term support from the IFRC network

The IFRC will support the National Society in the provision of appropriate health services, access to water, sanitation, and hygiene (WASH) services, as well as in the provision of first aid training. To this end, the IFRC will provide technical support in relevant areas and facilitate the Red Cross of Equatorial Guinea's access to regional or global health resources.



Local communities affected by torrential rain triggered flooding in Luba were assisted through a Disaster Response Emergency Fund (DREF) response. (Photo: The IFRC)



Equatorial Guinea is mainly considered a transit and origin country, with little population movement. The country hosts very few refugees and asylum-seekers with only [five refugees](#) registered and no asylum-seekers or internally displaced persons (IDPs). On the other hand, the country has a significant proportion of [international migrants](#), mostly from Nigeria, Cameroon, Mali and other neighbouring countries.

Migrants in Equatorial Guinea are often migrant workers seeking jobs in the oil, agricultural or informal sectors. However, the legal environment remains restrictive, with harsh immigration laws, such as Organic Law No. 3/2010, which supports deportations or up to [15 years of exclusion](#) from the country. This restrictive policy, combined with the lack of safe and regular migration channels, contributes to increased irregular migration. Migrants are [exposed to a variety of risks](#), including trafficking in persons, including women and children for the purpose of sexual exploitation or forced labour.

Equatorial Guinea does not have a strong legal framework for the protection of refugees, as it is not a signatory to [the 1951 Convention relating to the Status of Refugees](#). This shortcoming limits the country's ability to offer formal protection to people in need of asylum. In addition, regional instability in Central Africa, particularly in [Cameroon](#) and [Nigeria](#), continues to influence migration dynamics to and through Equatorial Guinea. However, the strict visa policy, combined with regular border closures, forces many migrants to use irregular routes, exposing them to increased risks of [trafficking, exploitation, or arbitrary detention](#).

In terms of humanitarian needs, irregular migrants are among the most vulnerable groups. They require increased access to health, legal assistance, psychosocial support services, and mechanisms to protect against abuse and arbitrary detention. Migrant women and unaccompanied minors are particularly at risk. The risks of displacement due to climate change are also on the rise, requiring better community and institutional preparedness.

The government response remains limited. There is no operational national migration strategy or cross-sectoral coordination mechanism specific to migration. Immigration is managed by the Ministry of Foreign Affairs, without an integrated framework for the humanitarian needs of migrants or displaced persons.

Multi-year high-level objectives of the National Society

The Red Cross of Equatorial Guinea supports people in need through its core disaster risk management and health and wellbeing programmes. The National Society does not yet have a migration policy, and its support to vulnerable migrants is integrated into other sections of its plan. In the coming years,

the National Society aims to increase its actions and strengthen its work on migration, in line with its auxiliary role.

Equatorial Guinea will focus on addressing its unique humanitarian challenges related to migration, displacement, public health, and community resilience. These efforts will align with the Red Cross's principles and priorities in humanitarian aid, protection of vulnerable populations, and long-term development.

Key objectives of the National Society include:

- Strengthening the humanitarian response and support to migrants, refugees, and internally displaced persons, by developing and implementing comprehensive programmes for access to essential services, protection, and advocacy
- Increase the resilience of communities to displacement and environmental risks, particularly those related to urban development and the effects of climate change
- Raise awareness against human trafficking and offer targeted assistance to victims, especially women and children
- Promote the improvement of the livelihoods and social integration of displaced populations, migrants, and vulnerable local communities, through skills development and economic empowerment

Planned activities in 2026

- Provide emergency shelter, food, clean water, and health care to migrants, refugees, and internally displaced people
 - Create safe spaces and support services for vulnerable migrants
 - Work with the authorities to ensure the legal protection of migrants and refugees, advocating for better asylum and immigration policies
 - Provide legal aid, psychosocial counselling, and reintegration services to victims of trafficking and those at risk of exploitation
 - Integrate [mental health and psychosocial support](#) (MHPSS) into humanitarian operations, especially for displaced and traumatized people
 - Encourage access to education for children from migrant and refugee communities
 - Work with regional organizations such as [CEMAC](#) to promote cross-border cooperation on migration issues
-

Longer-term support from the IFRC network

The IFRC will support the National Society's efforts in the development of its migration policy. This support consists of providing both financial and technical support to the National Society in its efforts to strengthen [shelter](#) activities, meeting the [minimum standards for protection, gender, and inclusion \(PGI\)](#) in emergencies, and ensuring effective deployment of resources and information to [humanitarian service points](#) (HSPs).



Values, power and inclusion

In Equatorial Guinea, access to education remains marked by deep inequalities. The school enrolment rate is 60 to 86 per cent in elementary school, but falling at 43 per cent in high school, with a high rate of abandonment. Girls, children living in rural areas, and children with disabilities are the [most likely to be excluded](#) from the education system.

The quality of teaching also remains a concern, due to a lack of qualified teachers, inadequate infrastructure, and limited pedagogical supervision. The country launched the PRODEGE programme with the support of USAID to improve education, but its impact remains partial. The [UNESCO Institute for Statistics \(UIS\)](#) shows a deficit in literacy indicators, especially among young people. In addition, according to the [GADRRRES National School Safety Profiles](#), schools are poorly prepared for disasters and lack essential safety measures.

Gender inequalities remain high in Equatorial Guinea. About 29 per cent have [reported experiencing](#) physical and/or sexual violence recently, and 43.6 per cent in their lifetime. The adolescent birth rate is [176 births per 1,000 girls](#) aged 15 to 19. In addition, nearly 30 per cent of girls are married [before the age of 18](#).

The coexistence of civil and customary law creates contradictions in the implementation of laws protecting women's rights. The [UNDP Gender Inequality Index](#) ranks the country in a critical position for gender equality. Persons with disabilities, on the other hand, [face major barriers](#) to accessing services.

LGBTQI+ groups, children separated from their families, ethnic minorities and migrants are also exposed to discrimination and violence. The [Global Data Centre on Trafficking in Persons](#) classifies Equatorial Guinea as a country at risk of trafficking and exploitation, particularly for children and girls.

The [RCCE's Utilities Data Portal](#) recommends the use of alternative and local means of communication (local radio, mobile phones, instant messaging) to maintain a direct link with communities. [CDAC's media and telecom landscape](#) also highlights the importance of understanding the preferred trust channels in each area.

The IFRC network will also provide long-term support to the Red Cross of Equatorial Guinea with a focus on capacity building, technical assistance, and resource mobilization. This support will be aligned with the organisation's strategic objectives in migration, displacement, public health and resilience, while respecting humanitarian and sustainability principles.

Multi-year high level objectives of the National Society

In 2026, the Red Cross of Equatorial Guinea is committed to strengthening the National Society aims to contribute to bringing about a positive change in communities through a wider understanding, ownership, and concrete application of humanitarian values and [fundamental principles](#). The National Society will:

- Develop a [flagship programme](#) to scale up humanitarian education with a focus on young people
- Adopt a comprehensive [protection, gender, and inclusion \(PGI\)](#) approach across its operations and programs and promote and support the systematic application of agreed [PGI minimum standards in emergencies](#)
- Embed [community engagement and accountability \(CEA\)](#) across programmes and operations to strengthen dialogue, listening, and community participation in all its programmes and interventions

Planned activities in 2026

- Carry out protection assessments in emergency contexts and in intervention areas
- Establish safe referral mechanisms for cases of gender-based violence, child protection and exclusion
- Integrate gender and diversity analysis into all programmes and promote child protection and gender equality through community dialogues
- Appoint a CEA focal point and establish a technical support team at the national level
- Set up diversified feedback channels such as suggestion boxes, phone lines, community groups, local radios, and WhatsApp
- Establish a standard operating procedure (SOP) for managing community feedback

Longer-term support from the IFRC network

The IFRC will work with the Red Cross of Equatorial Guinea to PGI practices across all programmes related to supporting people at risk and manage a global surge registry to make experts available to the National Society during emergencies, with a particular focus on safeguarding and protecting children.

The IFRC will also provide regular support to the National Society to ensure that communication, outreach, and CEA are integrated in all responses with the aim of improving access to reliable and timely information.

ENABLING LOCAL ACTORS

The Red Cross of Equatorial Guinea is committed to institutional strengthening and investing in its development. The National Society will work to improve its financial sustainability by investing in the core pillars of (a) accountability and systems development (b) resource mobilization (c) vision and mandate.



Key Institutional Indicators

The National Society has put in place the following:

- Strategy to strengthen its auxiliary role
- National Society development plan
- Youth engagement strategy
- Digital transformation roadmap



Strategic and operational coordination

Multi-year high level objectives of the National Society

- Works closely with the government, local authorities, civil society organizations, the private sector and research institutions to embolden its role as a leading humanitarian actor
- Develop a strategy and action plan for mobilizing resources
- Continue to build engagement through coordinated activities with other humanitarian organizations and enhance collaborative network in providing efficient and timely interventions

Longer-term support from the IFRC network

The IFRC will support the Red Cross of Equatorial Guinea in strategic and operational coordination through the request for the Equatorial Guinea Legal Status Agreement. In this context, the IFRC will continue to provide on-the-ground support with technical assistance in a variety of areas, including strategic planning, programme and operations development, project management, and evaluation. It will also assist with organizing fundraising activities and development of proposals.

The **Spanish Red Cross** will support the National Society through their long-term partnership.



National Society development

Multi-year high level objectives of the National Society

- Revise code of conduct for volunteers and staff to create a safe environment that is free from any harm or threat to the dignity of volunteers, its staff, and those that it serves
- Revise, develop, and disseminate its manual of administrative, logistical and financial procedures, through a local or international consultant, depending on availability of resources
- Embed a risk management framework by appointing a risk focal point, developing a risk register and using the risk register to orient decisions within the National Society

Longer-term support from the IFRC network

The IFRC will support the Red Cross of Equatorial Guinea in the revision of its strategic plan and statutes. It will also assist the National Society with leading advocacy with partners for the strengthening of mechanisms for pooling efforts and coordination of actions on the development of National Societies.

It will also assist with the establishment of a monitoring and evaluation framework to ensure that results and deliverables are achieved as intended, with disaggregation of data by sex and age group as much as possible.



Humanitarian diplomacy

Multi-year high level objectives of the National Society

- Strengthen its role as a trusted broker and advocate for humanitarian needs in Equatorial Guinea
- Focus on developing strong relationships with the government, civil society organizations, and other actors to advocate for the inclusion of humanitarian needs in national plans and policies, and promote fundamental principles
- Develop and implement a Humanitarian Diplomacy strategy

- Focus on capacity building and training in advocacy skills, as well as the development and implementation of advocacy agendas aligned with the IFRC's Global Advocacy Strategy.

Longer-term support from the IFRC network

The IFRC will support the Red Cross of Equatorial Guinea with strategic and operational coordination, the development of the humanitarian diplomacy strategy, and the strengthening of its auxiliary role. The IFRC will continue to promote a culture of humanitarian diplomacy and to integrate it into the daily activities of National Society.



Accountability and agility (cross-cutting)

Multi-year high level objectives of the National Society

- Develop a strategy and action plan to identify the main priorities of the National Society, disseminate information and raise funds.
- Conduct training on resource mobilization techniques and develop policies to prevent fraud, corruption, discrimination, harassment, child protection, gender and inclusion, while developing a national action plan and trainings for staff and volunteers
- Integrate a risk management framework by appointing a risk officer, developing a risk register, and using it to guide the National Society's decisions

Longer-term support from the IFRC network

The IFRC will continue to support the National Society in putting in place human resources management procedures by applying a zero-tolerance policy towards behaviour that is incompatible with the fundamental principles of the Red Cross and Red Crescent Movement, including sexual exploitation and abuse, harassment in all its forms, abuse of authority, discrimination and lack of integrity (including the fight against fraud and corruption).

The IFRC also supports the National Society in the development of its staff by organising regular workshops and seminars and ensuring that skills and knowledge are updated through continuing education initiatives, through the IFRC's free learning platform and study programmes in partnership with external organisations.

THE IFRC NETWORK

The IFRC

The IFRC supports the Red Cross of Equatorial Guinea from its country cluster delegation in Yaoundé, Cameroon, which also covers Cameroon, Gabon and Sao Tome and Principe. The IFRC support the National Society centres on strategic and operational coordination, National Society development, humanitarian diplomacy, and strengthening its auxiliary role. The IFRC programme and operations manager will guide, monitor, and support the National Society in the

implementation of the planned activities which will mainly be establishing a financial system and repairing the National Society headquarters and branches.

The federation secured legal status in the country through the signing of a historic legal status agreement on 15 October in Malabo, formalizing IFRC's legal presence and operational framework in the country.



A historic Legal Status Agreement was signed by IFRC Secretary General Jagan Chapagain and María Ángeles Miaga Bibang, Deputy Minister of Foreign Affairs, International Cooperation and Diaspora, in charge of Economic Affairs and Patrimony of the Diplomatic Missions of Equatorial Guinea. (Photo: IFRC)

IFRC membership coordination

The IFRC coordination involves working with member National Societies to assess the humanitarian context, humanitarian situations and needs. It involves agreeing on common priorities, co-developing strategies to address issues such as obtaining greater humanitarian access, acceptance and space; mobilizing funding and other resources; clarifying consistent public messaging; and monitoring progress. This also means ensuring that strategies and programmes incorporate clarity in their humanitarian efforts, development assistance, and

efforts to reinforce the auxiliary role of National Societies in their respective countries.

At present, no participating National Societies are directly operating in Equatorial Guinea. The Red Cross of Equatorial Guinea maintains a long-term partnership with the Spanish Red Cross, while other National Societies, including the Japanese Red Cross Society in 2023, extend their support through the IFRC.

Movement coordination

The Red Cross of Equatorial Guinea ensures regular exchanges with the IFRC, the International Committee of the Red Cross and participating National Societies, for the alignment of support and action between Movement partners. In times of emergencies, closer coordination is organized. This is carried out in line with the [Strengthening Movement Coordination and Cooperation \(SMCC\)](#) principles, and the newly adopted [Seville Agreement 2.0](#).

The ICRC provides financial and technical support to the Red Cross of Equatorial Guinea from its Yaoundé delegation. It provides support in first aid and emergency response, structural support, information technology equipment, running costs, and participation in regional trainings and meetings.

Coordination with other actors

The IFRC, through the Yaoundé cluster delegation, is supporting the National Society in strengthening the coordination of responses, particularly in conjunction with external actors: Ministry of Health, WHO, UNICEF, AFCD and other NGOs/actors present in the country. In accordance with its auxiliary role, the National Society also works closely with the authorities in Equatorial Guinea. The National Society is part of COMPREC,

the government structure responsible for disaster-related issues. As part of its response to the 2021-2022 floods and the 2023 Marburg outbreak, the National Society held coordination meetings with the central government, local authorities and multilateral partners. It also collaborates with a variety of other actors, including UN agencies such as the UN Children's Fund and the UN Development Programme.



The International Federation of Red Cross and Red Crescent Societies (IFRC)

is the world's largest humanitarian network, with 191 National Red Cross and Red Crescent Societies and around 16 million volunteers. Our volunteers are present in communities before, during and after a crisis or disaster. We work in the most hard to reach and complex settings in the world, saving lives and promoting human dignity. We support communities to become stronger and more resilient places where people can live safe and healthy lives, and have opportunities to thrive.

About the plan

The plan reflects the priorities of the host National Society, the IFRC and National Societies providing international support, for 2026 and subsequent years. It is aligned with IFRC [Strategy 2030](#), representing the collective ambitions of the IFRC membership, and is the result of a joint planning process and will serve for joint monitoring and reporting. It will be revised on an annual basis to adjust priorities and funding requirements to the needs in-country.

Explanatory note on funding requirements and definitions

- The total funding requirements show what the IFRC network seeks to raise for the given year through different channels: funding through the IFRC, through participating National Societies as bilateral support, and through the host National Society from non-IFRC network sources. All figures should include the administrative and operational costs of the different entities
- Host National Society funding requirements not coming from IFRC network sources can comprise a variety of sources, as demonstrated when reporting on income in the [IFRC network databank](#)
- Participating National Society funding requirements for bilateral support are those validated by respective headquarters, and often represent mainly secured funding
- IFRC funding requirements comprise both what is sourced from the IFRC core budget and what is sought through emergency and thematic funding. This includes participating National Societies' multilateral support through IFRC, and all other IFRC sources of funding
- Figures for the years beyond 2026 most often represent partial requirements that are known at time of publication. Many National Societies have annual internal approval processes for funding requirements, and lower figures do not mean a decrease in funding requirements in future years
- Missing data and breakdowns: data may not be available from all IFRC network members for funding requirements. This may lead to inconsistencies across different reporting tools as well as potential under-estimation of the efforts led by all
- Reporting bias: the data informing this Federation-wide overview is self-reported by each National Society (or its designated support entity) which is the owner and gatekeeper, and responsible for accuracy and updating. IFRC tries to triangulate the data provided by the National Societies with previous data and other data in the public domain
- **Definitions:**
 - » **Local units:** ALL subdivisions of a National Society that coordinate and deliver services to people. These include ALL levels (provincial, state, city, district branches, sections or chapters, headquarters, and regional and intermediate offices, as well as community-based units)
 - » **Branches:** A Branch has its roles, responsibilities and relationship with the National Headquarters defined through the National Society's Statutes, including the level of autonomy given, especially in the area of its legal status, mobilising local resources and building local partnerships, and the decisions it makes. It has a local-level decision-making mechanism through its Branch members, board and volunteers, equally defined through the National Society's Statutes

Additional information

- [IFRC network country plans](#) • [All plans and reports](#)
- Data on National Societies on [IFRC network databank](#)
- Live data on active emergency operations on [IFRC GO platform](#)
- Live data on [IFRC-Disaster Response Emergency Fund Response and Anticipatory pillars](#)
- [Evaluations and research bank](#) • [Donor response reports](#)

Contact information

Basilio Ndong Beyeng

National President
Red Cross of Equatorial Guinea
T +240 222 270 436 / +240 555 83 7101
bndongbeyeng@gmail.com

Adesh Tripathee

Head of Delegation
IFRC Country Cluster Delegation for Cameroon, Gabon,
Equatorial Guinea, and Sao Tome & Principe, based in Yaounde
T +237 650 659 991
adesh.tripathee@ifrc.org

Louise Daintrey

Head of Strategic Partnerships & Resource Mobilization
IFRC Regional Office for Africa,
Nairobi
T +254 110 843978
louise.daintrey@ifrc.org

Sumitha Martin

Lead
IFRC Global Strategic Planning & Reporting Centre
New Delhi
sumitha.martin@ifrc.org