



NEPAL

2026-2028 IFRC network country plan



12 January 2026

In support of the Nepal Red Cross Society



77

National Society branches



8,319

National Society local units



343

National Society staff



89,863

National Society volunteers

People to be reached in 2026



130,000

Climate and environment



80,000

Disasters and crises



262,000

Health and wellbeing



10,000

Migration and displacement



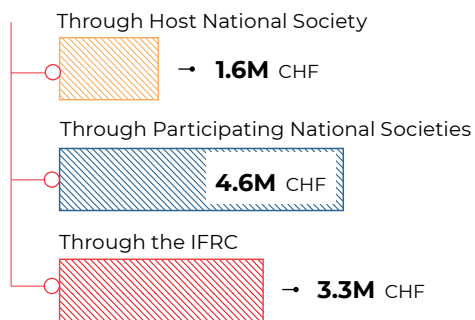
12,000

Values, power and inclusion

IFRC network Funding Requirements

2026

Total 9.5M CHF



2027

Total 1.5M CHF

2028

966,000 CHF

Projected funding requirements

Participating National Societies

- American Red Cross
- British Red Cross
- Canadian Red Cross Society
- Danish Red Cross
- Finnish Red Cross
- Irish Red Cross Society
- Japanese Red Cross Society*
- Luxembourg Red Cross
- Saudi Red Crescent Authority*
- Swiss Red Cross
- The Republic of Korea National Red Cross

IFRC Appeal codes

Longer-term needs:

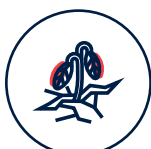
MAANP001

*National Societies which have contributed only multilaterally through the IFRC in 2025.

Hazards



Earthquakes



Drought



Floods



Diseases



Landslides



Population movement

IFRC network multi-year focus

Emergency response

- Karnali earthquake response
- Floods response

Longer term needs

- Climate change adaptation
 - Health and wellbeing
- Migration and displacement
- Mountain village livelihoods
- Disaster risk reduction and resilience

Capacity development

- Legal frameworks
- Governance
 - Branch development
- Internal systems strengthening
 - Financial sustainability
 - Humanitarian diplomacy

Key country data links

INFORM Climate Change Risk Index **Medium**

Human Development Index rank **145**

World Bank Population figure **29.7M**

World Bank Population below poverty line **20%**



Nepal Red Cross Society volunteer interacts with community people to provide health-related information. (Photo: Nepal Red Cross Society)

Detailed funding requirements

2026

Host National Society IFRC

Longer-term needs

Climate and environment	94,000	475,000
Disasters & crises	300,000	2M
Health & wellbeing	520,000	255,000
Migration & displacement	35,000	35,000
Values, power & inclusion	154,000	50,000

Enabling local actors 512,000 500,000

Total 1.6M 3.3M

Participating National Societies bilateral support

National Society	Year	Funding Requirement	Confirmed Funding	Climate and environment	Disasters and crises	Health and wellbeing	Migration and displacement	Values, power and inclusion	Enabling Functions
American Red Cross	2026	362,000		66,000	296,000				
	2027	237,000			237,000				
	2028	237,000			237,000				
British Red Cross	2026	1.1M	1.1M	-					
	2027	875,000	875,000						
	2028	729,000	729,000						
Canadian Red Cross Society	2026					-			
Danish Red Cross	2026	2.2M	292,000	-	-	-			
Finnish Red Cross	2026	450,000		450,000					
	2027	350,000		350,000					
Irish Red Cross Society	2026	350,000		350,000					
Luxembourg Red Cross	2026			-					
Republic of Korea National Red Cross	2026	89,000				89,000			
Swiss Red Cross	2026			-	-	-			

See back page for explanatory note on funding requirements

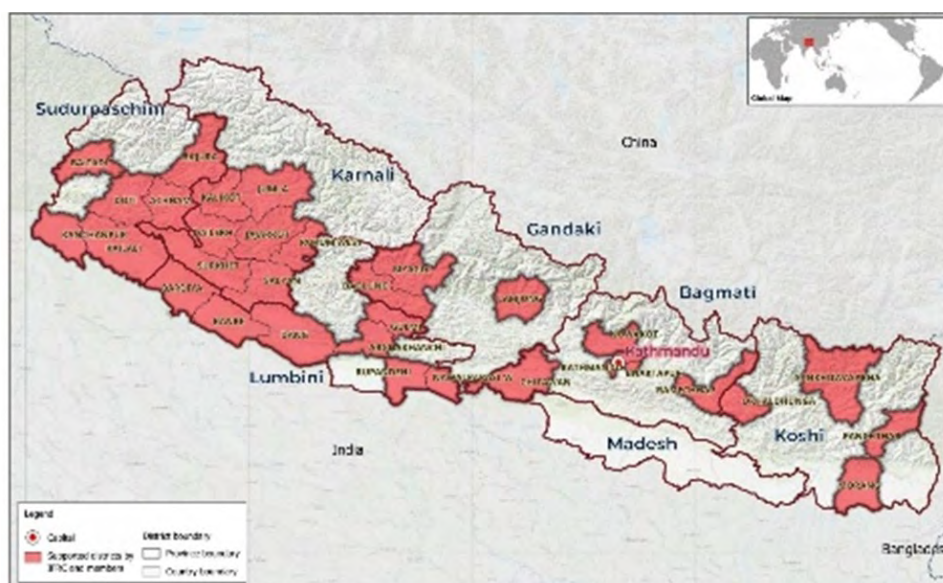
NATIONAL SOCIETY PROFILE

The **Nepal Red Cross Society** was established in 1963 and admitted to the International Federation of Red Cross and Red Crescent Societies (IFRC) in 1964 and was recognized by the International Committee of the Red Cross (ICRC) in the same year. The National Society is recognized as a voluntary, autonomous relief society and auxiliary to the public authorities in its humanitarian activities.

The Nepal Red Cross Society is Nepal's largest humanitarian organization, with 89,863 volunteers, 343 staff and a network of 7 provincial branches, 77 district chapters, 1,500 sub-chapters and 6,000 youth groups. It provides essential services in health, water, sanitation and hygiene (WASH), disaster response and development, and is the country's main provider of first aid, blood transfusion services and humanitarian cash assistance, while maintaining relief stockpiles in remote areas. The Nepal Red Cross Society also conducts official Initial Rapid Assessments as an auxiliary to public authorities.

Currently completing its eight development plan, the Nepal Red Cross Society plans to adopt a new five-year strategic plan in early 2026. However, the National Society is recovering from a prolonged governance and integrity crisis, marked by political interference and competing leadership claims. In 2025, the IFRC Compliance and Mediation Committee and the Government intervened, dissolving rival groups and appointing an ad hoc committee to revise the constitution and organize new elections. While these steps have set the Nepal Red Cross Society on a path to recovery, restoring trust will require sustained risk management and targeted support.

In 2024, the Nepal Red Cross Society reached more than 1.2 million people through its long-term services and development programmes and more than 340,000 people through its disaster response and early recovery programmes over time.



Map of the Nepal Red Cross Society branches

The map does not imply the expression of any opinion on the part of the IFRC or the National Society concerning the legal status of a territory or its authorities

IFRC NETWORK ACTION

JOINT SITUATIONAL ANALYSIS

Nepal is a culturally diverse nation with a rich mix of ethnicities, languages, and traditions. The country is undergoing rapid urbanization, ranking among the fastest in South Asia, while aiming to achieve middle-income status by 2030. This demographic shift is driven by migration, as over 2.1 million Nepalis work abroad, contributing significantly to remittances—equivalent to 33 per cent of GDP—but also accelerating rural depopulation. Despite progress, Nepal remains 146th on the [Human Development Index](#), with persistent inequalities rooted in caste, gender, and geography. Although the caste system was abolished in 1962, it continues to influence social and economic structures, while women and marginalized groups face barriers to equitable development due to entrenched power dynamics, limited access to resources, and a widening digital divide.

Economically, Nepal is recovering from the COVID-19 crisis, with [GDP growth](#) moderating to 4.1 per cent in 2023, down from 5.8 per cent in 2022, supported by tourism, agriculture, and remittances. However, inflationary pressures driven by global energy and transport costs remain a challenge. According to

the [Multidimensional Poverty Index \(2021\)](#), 17.4 per cent of the population (4.9 million people) are multi-dimensionally poor, with education and nutrition as key deprivation indicators. Looking ahead, Nepal is expected to graduate from Least Developed Country (LDC) status by 2026, a milestone that will reshape its international partnerships and foreign aid eligibility.

Politically, Nepal has undergone significant transformation since the 2015 Constitution, adopting a federal structure with 7 provinces, 77 districts and 753 municipalities. While decentralization aims to strengthen governance, recent instability underscores ongoing challenges. In September 2025, youth-led protests over corruption and a social media ban triggered widespread violence, resulting in numerous casualties and property damage estimated in [trillions of rupees](#), alongside a change in national leadership. These events highlight the fragility of Nepal's political environment and the need for inclusive governance and accountability.

Despite these challenges, Nepal's development trajectory remains positive, with [projections](#) of 5.1 per cent economic growth by 2026, supported by manufacturing, construction, and strong remittance inflows. However, structural inequalities, governance risks, and climate vulnerabilities continue to pose significant obstacles to sustainable progress.



Climate and environment

Nepal is recognized as a climate hotspot, warming at an average rate of 0.056°C per year, with higher rates observed in high-altitude regions. Precipitation patterns show a declining trend overall, yet extreme rainfall events are becoming more frequent and intense, creating cascading risks across mountainous, rural and rapidly urbanizing areas. These changes amplify vulnerabilities, exposing communities to interconnected hazards such as glacial lake outburst floods (GLOFs), river flooding, droughts, heatwaves and forest fires. Recent events, including the 2024 Thame flood and 2025 Rasuwa flood, illustrate the domino effect of climate risks, causing loss of life, destruction of property, disruption of livelihoods, and erosion of community resilience.

Climate change impacts extend beyond physical hazards to socio-economic dimensions, with projections indicating an additional 2–3 per cent GDP loss in the coming years. Humanitarian needs are expected to escalate sharply, outpacing available resources for response and recovery. Environmental degradation—driven by uncontrolled urbanization, poor land-use planning, haphazard road construction, river pollution and inadequate waste management—further compounds these risks. Glacial retreat, shifting species ranges, and increased frequency of extreme precipitation events underscore the urgency of adaptive measures.

To address these challenges, Nepal adopted the Green, Resilient and Inclusive Development (GRID) framework in 2021, outlining ten priority actions. These include integrated land, water, and forest management, resilient infrastructure development, greening urban growth, scaling up renewable energy, improving water supply and sanitation, reducing air pollution and strengthening disaster risk management. The framework also emphasizes social protection, health system resilience and equipping communities with skills for climate-resilient livelihoods. Despite these efforts, climate change continues to exacerbate risks across all sectors, including health, shelter, livelihoods and protection, making climate adaptation and resilience-building central to Nepal's humanitarian and development agenda.

Multi-year high level objectives of the National Society

The Nepal Red Cross Society is part of the IFRC Global Climate Resilience Programme, which aims to foster an unprecedented scale-up in locally led, climate-smart, disaster risk reduction and adaptation efforts to prevent and reduce climate-related disaster impacts and build community-level climate resilience. The programme aims to support 500 million people in 100 of the most climate-vulnerable countries, focusing

on the least supported and marginalized communities. This holistic, multi-year programmatic approach consists of four operational pillars: (1) scaling up climate-smart disaster risk reduction, anticipatory action and preparedness; (2) reducing the public health impacts of climate change; (3) addressing climate displacement; (4) enabling climate-resilient livelihoods and ecosystem services.

To address the growing impacts of climate change, the National Society has developed a Climate and Environment Policy and Framework, which outlines both policy direction and an implementation roadmap. In alignment with this framework, IFRC-wide programmes and operations will prioritize disaster risk reduction through early warning systems, anticipatory actions, forecast-based financing and nature-based solutions. Key objectives include to:

- Enhance its ability to respond to emerging disasters, particularly in areas previously unaffected
- Reduce compounded risks and support communities with limited capacity to adapt to changing climate patterns
- Ensure Protection, Gender and Inclusion (PGI) and Community Engagement and Accountability (CEA) are integrated across all activities, while expanding beyond disaster response to include early recovery support to the most vulnerable populations

Planned activities in 2026

- Roll out the Climate and Environment Policy and the corresponding framework at federal, provincial and local levels, integrating climate-smart programming and operations across all sectors (disaster risk management, livelihoods, water, sanitation and hygiene (WASH), health and others)
- Strengthen youth-led climate action nationwide through the Changemaker campaign and Youth Adaptation training, enabling young people to lead local adaptation initiatives
- Develop, endorse and operationalize anticipatory action plans and extreme weather protocols for heat waves, cold waves, droughts, glacial lake outburst floods, dengue and monsoon events
- Establish and connect inclusive multi-hazard early warning systems to national, regional and global forecasting platforms with real-time hydrometeorological data, ensuring last-mile communication

- Promote evidence-based documentation and research on climate risk reduction and disseminate learning nationally and internationally
- Expand partnerships with research institutions, academia, technology companies and private sector entities to mobilize resources and co-create climate resilience solutions
- Implement nature-based solutions, ecosystem restoration and biodiversity conservation—prioritizing habitat protection and [climate-smart](#) designs in community projects
- Institutionalize anticipatory action across preparedness and response mechanisms, including Early Action Protocols (EAPs) and simulation drills at multiple administrative levels
- Increase community awareness of climate impacts and adaptive behaviours through structured behaviour change initiatives

Longer-term support from the IFRC network

The IFRC will coordinate technical and financial support to develop and implement the Climate and Environment Policy and framework, scale inclusive early warning systems and deepen anticipatory action. It will steward partnerships with the Worldwide Fund for Nature and the National Trust for Nature Conservation to integrate nature-based solutions and mobilize global financing instruments for climate and health actions. The IFRC will also resource youth-led climate initiatives and facilitate cross-country learning.

The **American Red Cross** will provide expertise and funding for climate-smart disaster risk management, anticipatory action planning and capacity building for staff, volunteers and youth, with a strong focus on digital data systems and evidence generation.

The **British Red Cross** will strengthen nature-based solutions and climate adaptation at community level, support youth leadership in climate actions and co-invest in documentation and dissemination of climate resilience good practices.

The **Canadian Red Cross** will back the integration of climate considerations into health and WASH programming, including technical assistance for climate-sensitive service delivery and community awareness.

The **Danish Red Cross** will co-lead on anticipatory action and multi-hazard early warning initiatives, support policy dialogue and facilitate peer learning on climate risk governance and community-led adaptation.

The **Finnish Red Cross** will help scale early warning coverage, reinforce climate-smart disaster risk reduction measures and support capacity strengthening for environmentally sustainable practices.

The **Swiss Red Cross** will invest in climate-smart programming across sectors, help mainstream climate standards in programme design and support training for provincial and district units on climate integration.



Disasters and crises

For real-time information on IFRC emergencies, visit IFRC GO page [Nepal](#)

Nepal remains highly exposed to [multiple natural hazards](#) and health emergency risks despite notable progress in preparedness and risk reduction. According to the [INFORM Risk Index](#), Nepal is ranked 65 globally in 2025, placing it in the medium-risk category overall. However, the country continues to rank at the very top for earthquake risk and remains in the [high category for epidemic risk](#). While vulnerability scores improved between 2016 and 2018, recent trends show a reversal, with vulnerability increasing since 2023 due to higher economic dependency on aid and remittances. Climate-related risks are also rising, as reflected in the [Germanwatch Climate Risk Index](#), where Nepal ranked 78 in 2022, and the ND-GAIN Index, which places Nepal among countries with [high vulnerability and low readiness](#) for climate adaptation.

[Earthquakes](#) pose a major threat as Nepal lies in a high seismic zone with several active fault lines. In 2023, a [6.4 magnitude earthquake](#) struck the country, killing 157 people and injuring hundreds across 11 districts, with Jajarkot and Rukum West being the hardest hit. The earthquake and its aftershocks triggered landslides, disrupting transportation and access to remote communities. Floods and landslides are recurrent hazards during the monsoon season from June to October. Historical data shows 5,614 events of floods and landslides have claimed 2,148 lives, damaged over 61,000 houses, and affected more than 80,000 households. Twenty-eight districts are [highly vulnerable](#) to floods, and 21 districts are vulnerable to landslides, with the most affected communities located in the hills and plains.

Emerging climate-induced hazards are adding complexity to Nepal's risk profile. Unseasonal rainfall patterns and cloudbursts have been reported in recent years, including events in Kathmandu Valley and surrounding districts in 2024. Glacier lake

outburst floods occurred in Solukhumbu in August 2024 and in Rasuwa in July 2025, while heatwaves have impacted almost all districts in the Terai region. In July 2025, Nepal declared its first drought emergency in Madhesh Province under the National Disaster Risk Reduction and Management Act, affecting over one million people. Dengue outbreaks have also spread across all 75 districts, highlighting the growing epidemic risk.

Underlying vulnerabilities such as weak socio-economic conditions, poor land-use planning, uncontrolled urbanization, non-engineered construction, river pollution, inadequate sanitation and poor solid-waste management exacerbate disaster impacts. These factors, combined with environmental degradation, increase the susceptibility of communities to hazards and reduce their ability to cope with shocks.

On average, more than 40,000 people—or 8,000 households—are affected by disasters annually. The immediate needs following such events typically include shelter, food, livelihoods, drinking water, sanitation facilities and basic health services. There is an urgent need to expand community-based disaster risk reduction and resilience programmes that integrate multi-hazard and climate adaptation approaches. Strengthening coordinated response mechanisms at municipal, provincial and federal levels is essential, along with promoting cash and voucher assistance to enhance flexibility and timeliness during crises.

Multi-year high-level objectives of the National Society

Mandated under the Disaster Risk Reduction and Management (DRRM) Act of 2017, the Nepal Red Cross Society plays a critical role in supporting authorities at all levels in disaster risk management. Over the years, it has built a strong foundation through legacy initiatives while responding to both localized and large-scale emergencies across the country. The 8th Development Plan (2021–2025) prioritized disaster and crisis management as one of its four strategic directions, and preparations for the 9th Development Plan (2026–2030) are currently underway.

The Nepal Red Cross Society is involved in the Early Warnings for All initiative (EW4All), which aims to ensure everyone on Earth is protected by early warning systems by 2027. In this United Nations-led initiative, the IFRC is the lead of Pillar 4 on preparedness for response to warnings and is also actively engaged in Pillars 1 and 3 of Disaster Risk Knowledge and Warning Dissemination and Communication. The National Society, with IFRC support, will be working with national authorities to coordinate Pillar 4 and implement activities.

Aligned with global, regional and national priorities, the focus of the National Society is to:

- Expand community-based disaster risk reduction (CBDRR) and resilience programmes, integrating climate adaptation and nature-based solutions to reduce vulnerability and enhance preparedness

- Improve its ability to deliver timely, effective relief during disasters, ensuring access to shelter, water, sanitation and hygiene (WASH), health services and protection for vulnerable groups
- Transition from in-kind relief to cash and voucher assistance (CVA) as a primary modality for emergency and recovery support, ensuring flexibility and dignity for affected populations
- Strengthen emergency operation centres, warehousing, logistics, data management and anticipatory action systems to enable rapid and coordinated response
- Deepen engagement with government authorities and humanitarian networks to influence policy, strengthen disaster governance and ensure alignment with national and global frameworks

Planned activities in 2026

- Strengthen community resilience through inclusive risk assessments, community-led risk reduction plans, school and road safety awareness and indigenous practices linked to modern technologies
- Institutionalize anticipatory action, finalize early action protocols (flood, heat wave, dengue) and conduct drills to test contingency plans at local and provincial levels
- Provide timely humanitarian assistance during crises—shelter, WASH, food, health, safeguarding and cash—aligned with national standards and protection commitments
- Upgrade emergency shelter management capacity, offer safer construction awareness (including participatory approaches to safer shelter and mason training) and contextualize climate-friendly emergency and transitional shelter solutions
- Restore livelihoods through climate-smart farming, cash-for-work and rehabilitation of essential community infrastructure (irrigation canals, foot trails, debris clearance)
- Expand pools of trained first responders (including national, district and community disaster response teams; first aiders; search and rescue; shelter; WASH; health; community engagement) and strengthen leadership at provincial and district levels
- Enhance Emergency Operation Centre functions, information management, logistics, pre-positioning of relief items and digital systems for stock and volunteer management
- Advance disaster law engagement: review and support government plans and frameworks and advocate for multi-hazard early warning systems and shock-responsive social protection

- Improve cash preparedness, tools, procedures and financial service provider mapping to enable swift multi-purpose and conditional cash assistance in emergencies
- Promote strategic coordination and shared engagement among partners, ensuring coherent operations and joint resource mobilization for disaster response

Longer-term support from the IFRC network

The IFRC will continue supporting the Nepal Red Cross Society in implementing community-based disaster risk reduction and resilience programmes across both urban and rural communities. This includes technical assistance for developing plans, policies and strategies that strengthen community resilience. Key areas of support will focus on enhancing the Nepal Red Cross Society's capacity in disaster risk management planning, risk assessment, digitization, risk education and multi-hazard risk reduction, in close coordination with regional and global teams.

The approach follows shared leadership principles, placing the Nepal Red Cross Society at the centre to ensure effectiveness, efficiency and sustainability. Strengthening response mechanisms from local to national levels remains a priority, particularly as government structures evolve. Financial and technical support will continue to improve the Nepal Red Cross Society's ability to conduct timely needs assessments, household targeting and joint response planning with municipalities. Relief distribution will integrate climate-related considerations, and green practices will be promoted throughout response and recovery efforts in line with the Nepal Red Cross Society's climate and environment framework.

The IFRC will also help address gaps identified through the Preparedness for Effective Response (PER) self-assessment,

especially at branch level. IFRC mechanisms such as the Disaster Response Emergency Fund (DREF) and Emergency Appeal will be drawn on as needed for National Society responses to crises and disasters. Cash readiness will be further strengthened in 2026, building on successful past operations, and the Nepal Red Cross Society is exploring the rollout of IFRC's AccessRC tool to streamline CVA programming.

In 2025, the IFRC supported the Nepal Red Cross Society with one DREF for drought and activated one simplified Early Action Protocol (sEAP) for heatwaves.

Preparedness levels vary across Nepal Red Cross Society units, highlighting the need to update outdated policies, strategies, guidelines and training packages. Revising these tools is a priority for 2026, alongside developing new frameworks for climate action. The IFRC will support the Nepal Red Cross Society in enhancing Emergency Operations Centre (EOC) functions and expanding warehousing in remote provinces such as Sudurpaschim and Karnali. Pre-positioning relief items near vulnerable communities and promoting local resource generation will also be prioritized.

Efforts will continue to scale up Early Action Protocols (EAPs) for heatwaves, dengue and floods, with technical support from the Red Cross Red Crescent Climate Centre and participating National Societies including the **Danish Red Cross**, **Swiss Red Cross**, **American Red Cross**, and the **Finnish Red Cross**. As co-lead of the Shelter Cluster, IFRC and the Nepal Red Cross Society will collaborate with the Department of Urban Development and Building Construction to address shelter needs. In 2026, the Nepal Red Cross Society's Shelter and Settlement Operational Plan (2025–2028) will be developed with support from the **Luxembourg Red Cross**. The Nepal Red Cross Society will also maintain its role as Secretariat of the CBDRM Platform, guiding engagement in disaster risk management policy dialogue with MoFAGA and other partners.



Nepal Red Cross Society volunteers are managing data before distributing items as part of the disaster response. (Photo: Nepal Red Cross Society)



Nepal's health and water, sanitation and hygiene (WASH) landscape in 2026 reflects decades of steady progress alongside structural challenges that continue to affect equitable wellbeing. Health is enshrined as a [constitutional right](#), and national strategies—including the [National Health Policy 2019](#) and the Nepal Health Sector Strategic Plan (2023–2030)—place strong emphasis on social justice, Universal Health Coverage and strengthening local-level service delivery.

Over recent decades, major health indicators have improved substantially. Life expectancy rose from 58.3 years in 1990 to 71.1 years in 2019 and under-1 and under-5 mortality rates declined significantly between 2011 and 2022. However, critical gaps remain—maternal mortality has plateaued at 151 deaths per 100,000 live births, neonatal mortality remains stagnant at 21 per cent and childhood undernutrition persists, with 25 per cent [stunting](#) and 8 per cent [acute malnutrition](#).

Nepal now faces a pronounced [double burden of disease](#). [Non-communicable diseases](#) account for roughly two-thirds of all deaths, driven by cardiovascular conditions, cancers, chronic respiratory illnesses and diabetes. Air pollution is a major contributor to chronic lung diseases, and [mental health](#)—representing about 18 per cent of the [NCD burden](#)—remains under-resourced. At the same time, [communicable diseases](#) continue to impose significant strain. Tuberculosis affects more than 117,000 people, with over 40 per cent of cases remaining undetected or untreated due to financial and time barriers. Recurring cholera outbreaks highlight systemic challenges in water safety and sanitation. Vector-borne diseases are expanding geographically due to rising temperatures and poor urban sanitation; Nepal recorded more than 50,000 [dengue](#) cases in 2022, and Japanese encephalitis cases surged in 2025. [Emerging infectious threats](#)—including monkeypox, scrub typhus and influenza—add further complexity to the public health landscape.

Injuries remain another major contributor to mortality and disability. [Road traffic accidents](#) caused over 6,000 deaths and 29,000 injuries between 2022 and early 2025, reflecting long-standing road safety challenges. The lingering impacts of the COVID-19 pandemic, including service disruptions and declines in routine immunization, remain evident. Only 52 per cent of children aged 12–23 months are fully vaccinated, while four per cent have received [no vaccines at all](#).

The WASH sector shows mixed progress. While 95 per cent of the population has access to basic drinking water, only 16 per cent benefit from safely managed services. Safely managed sanitation coverage stands at 51 per cent and 64 per cent have basic handwashing facilities. Uneven progress, contamination risks, ageing infrastructure and vulnerabilities to climate-induced disruptions continue to constrain service reliability. [Climate change](#) exacerbates water scarcity, increases contamination during floods and places additional pressure

on fragile systems—disproportionately affecting marginalized communities.

The Government of Nepal aims to reach 99 per cent basic water service, 90 per cent piped water coverage and 95 per cent improved sanitation by 2030, with growing emphasis on climate-resilient WASH systems and nature-based solutions.

Overall, Nepal's health and wellbeing trends are shaped by the intersection of environmental stressors, demographic transitions, infectious disease risks and rising NCDs. Sustained investments in primary healthcare, disease prevention, routine immunization, mental health, emergency preparedness and climate-resilient WASH infrastructure will be essential to protecting public health gains and ensuring equitable wellbeing across communities.

Multi-year high-level objectives of the National Society

As stated in the Nepal Red Cross Society Health Policy, the primary objective of the Nepal Red Cross Society is to act as an [auxiliary](#) to the national health system by defining the needs, roles and competencies of the Nepal Red Cross Society in health governance. This is to ensure support and delivery of quality health services to vulnerable individuals and communities. While continuing to strengthen the flagship programmes of the Nepal Red Cross Society—including blood services, [first aid](#), eye care and ambulance services as part of pre-hospital care—outlined in the Eighth Development Plan, the Nepal Red Cross Society will prioritize community health (with a focus on non-communicable diseases, [healthy ageing](#) and [surveillance](#)) and emergency health in the coming years. The priorities of the Nepal Red Cross Society until 2030 are highlighted in its health policy, health strategy and operational plan.

The Nepal Red Cross Society will continue to position itself in the health arena in contributing to meet the targets and current needs through the following specific objectives and priorities:

- Protect the health and well-being of communities and improve access to sustainable, affordable, appropriate and quality health services across the life course
- Maintain the health and dignity of communities in emergencies and disease outbreaks by providing access to appropriate health services
- Work to provide communities increased access to affordable, safe and environmentally sustainable water, sanitation and hygiene ([WASH](#)) services, especially during emergency settings
- Capitalize on its auxiliary role to ensure its position on relevant country-level public health strategy, advocacy and policy platforms and mechanisms

Planned activities in 2026

- Engage continuously in national health policy and strategy platforms; expand partnerships with government authorities, multilateral and private sector actors to increase service reach and quality
- Upgrade pre-hospital care (including ambulances) with digital networking and dispatch, strengthen quality improvement for blood transfusion services and expand eye and ear care services through sustainable partnerships
- Scale community health programming focusing on [first aid](#), maternal, newborn, child and adolescent health; non-communicable diseases; [healthy ageing](#); climate-related health risks (including dengue, cholera and heat stress) and nutrition
- Expand community-based mental health and psychosocial support ([MHPSS](#)) services and strengthen referral pathways, especially during emergencies
- Prevent and control communicable diseases through integrated community, government, and partner efforts, including enhanced surveillance and rapid response
- Improve road traffic injury prevention through awareness, safe transport practices and first aid readiness
- Design and implement climate-smart WASH solutions, integrated water resource management (watershed, recharge, plantation), water safety plans for every drinking water scheme and accessible institutional sanitation
- Localize technological innovations (including hybrid power systems and solar pumping) in water systems, strengthen water user committees and expand behaviour change communication for hygiene
- Ensure occupational safety for service providers and users in health facilities through robust infection prevention and control measures and expand the commercial first aid business model
- Provide Risk Communication and Community Engagement (RCCE) on disease burden such as NCDs, communicable diseases, road traffic accidents, dengue, malaria, lung health and gender-based violence
- Build competency-based training systems and national rosters of qualified trainers across health programmes

Longer-term support from the IFRC network

The IFRC will continue providing technical and financial support to the Nepal Red Cross Society for community-based health and WASH projects in vulnerable districts. It will strengthen flagship programmes such as Blood Transfusion Services, pre-hospital care, First Aid and Eye Care, including digitalization of Blood Transfusion Services through the IFRC Capacity Building Fund ([CBF](#)).

11 Country plan • Nepal

The IFRC will also support emergency preparedness and build capacity in public health, climate health, non-communicable diseases, mental health and psychosocial support ([MHPSS](#)) and digitalization. Additional priorities include reducing climate-related health impacts through climate-smart approaches. As part of its engagement in the [Global Taskforce on Cholera Control](#), the IFRC hosts the [country support platform](#) assisting the Government of Nepal and the Ministry of Health and Population in endorsing the National Cholera Elimination Plan, aligned with global standards. This includes technical support across surveillance, case management, water, sanitation, and hygiene, oral cholera vaccination strategies, and community engagement.

Furthermore, the IFRC will help the Nepal Red Cross Society promote safe WASH practices through drinking water schemes, behaviour change initiatives such as the Community-Based Health and First Aid ([CBHFA](#)) approach and hardware interventions. Gender and social inclusion, community engagement and climate considerations will be integrated across all components, with nature-based solutions prioritized to protect water sources and ensure sustainability.

The **British Red Cross** will support the Nepal Red Cross Society in CBHFA and WASH, including emergency health preparedness, First Aid training and strengthening flagship programmes such as Blood Transfusion Services and ambulance services.

The **Canadian Red Cross** will assist in expanding community health programmes with a focus on non-communicable diseases, healthy ageing and MHPSS, along with capacity building in public health emergencies and digitalization.

The **Danish Red Cross** will contribute to MHPSS, climate health, emergency preparedness and WASH projects, ensuring gender-inclusive approaches.

The **Finnish Red Cross** will support environmentally sustainable WASH designs, solar-powered water lifting systems and community-level hygiene promotion.

The **Hong Kong Red Cross** will co-finance WASH construction and renovation, support institutional sanitation facilities that are accessible and dignified and engage local media for behaviour change communication.

The **Korean National Red Cross** will focus on climate-smart health interventions, nature-based solutions for water sources and advocacy for sustainable health outcomes.

The **Qatar Red Crescent** will support WASH projects, expand hygiene promotion in schools and communities, and help integrate nature-based solutions into water and sanitation designs.

The **Swiss Red Cross** will strengthen maternal, newborn, child and adolescent health, nutrition and surveillance, while supporting emergency health response and staff capacity building.



Labour migration is one of the most defining socio-economic trends in Nepal. Millions of Nepalis seek employment abroad, primarily in Gulf countries, Malaysia, India and increasingly in East Asia. Recent data shows that over 1,700 people leave Nepal daily for foreign employment, and remittances contribute nearly one-quarter of Nepal's GDP, making migration a critical economic lifeline. This reliance on foreign employment reflects limited domestic job opportunities and the persistent aspiration for better livelihoods abroad.

The predominance of male migration has profound social consequences. Women left behind often shoulder additional responsibilities, including childcare, elder care and agricultural work, while managing household finances. This shift in family roles increases workloads and can lead to social vulnerabilities. Migrants themselves face challenges such as inadequate pre-departure information, language barriers and rights violations in destination countries. Reintegration upon return is equally complex, with issues of stigma, unemployment and social adjustment.

Global migration policies, particularly in Europe and North America, are evolving and may influence future trends. These changes create uncertainty for returnees and their families, potentially leading to economic distress and social stigma. Despite policy reforms, Nepal continues to rely heavily on foreign employment as a safety valve for unemployment and income generation, underscoring the need for comprehensive strategies to balance migration with domestic economic development.

Alongside labour migration, climate change and disasters are major drivers of internal displacement. Nepal's mountainous terrain and fragile ecosystems make it highly vulnerable to floods, landslides and earthquakes. Between 2011 and 2021, disasters displaced 3.4 million people, and projections suggest that an average of 96,000 people could be displaced annually by riverine floods and earthquakes. Most displacement involves short-term relocation to relatives' homes or temporary shelters, but thousands remain unable to return for extended periods due to destroyed housing and loss of livelihoods. Climate-induced factors—such as water scarcity, soil degradation and food insecurity—are accelerating depopulation in hilly and mountainous regions, creating long-term migration pressures.

Migration and displacement in Nepal are shaped by economic dependence on foreign employment, gendered social impacts, protection and rights issues for migrants and growing climate-related vulnerabilities. These dynamics highlight the urgent need for integrated policies that address labour migration, disaster resilience and social protection to ensure sustainable development and community well-being.

Multi-year high-level objectives of the National Society

The National Society is part of the IFRC's three-year Global Route-Based Migration Programme, which aims to improve the safety and dignity of people on the move along deadly and dangerous land and sea-based migration routes. The programme aims to support 4.7 million people annually across the world who are either on the move or living in host communities. It will do so through three operational pillars: (1) improving access to assistance and protection, including through humanitarian service points; (2) strengthening National Society capacities; and (3) local to global humanitarian diplomacy.

The Nepal Red Cross Society has a long history of supporting migrants and displaced populations. Its efforts have included assistance to Tibetan and Bhutanese refugees, health awareness programs for seasonal migrants from India, support for internally displaced people, and, most recently, aid for migrants at points of entry during the COVID-19 pandemic.

Recognizing the evolving needs of migrants, the Eighth Development Plan of the Nepal Red Cross Society emphasizes the importance of renewed and focused attention on migration issues, closely linked to the broader protection agenda. This requires investment in policies and institutional capacities, deeper understanding of migration challenges across its network, and stronger partnerships with public authorities and key stakeholders. The goal is to design and implement innovative approaches that benefit migrants, their families and communities. This commitment is also reflected as a priority in the National Society Development Plan.

Planned activities in 2026

- Conduct comprehensive needs assessments and establish a single, organization-wide plan for migration and displacement that mainstreams these issues across programmes and services
- Build on past experiences and under the SAFER Nepal project, continue to focus on border districts where migration risks are high, while also prioritizing anti-trafficking initiatives
- Implement sustained awareness campaigns on safe migration and anti-trafficking at community and school levels, including stigma reduction and risk communication
- Deliver youth-led safe migration initiatives and Youth Adaptation trainings tailored for returned migrants and internally displaced persons to strengthen resilience and informed decision-making

- Improve Restoring Family Links (RFL) services and expand protection and assistance to internally displaced persons and host communities affected by recurrent disasters
- Address climate-induced internal displacement in urban areas through inclusive services, referral pathways and links to livelihoods and housing support
- Develop evidence-based advocacy grounded in strengthened internal policies and capacities on migration and displacement; convene national roundtables to align stakeholders
- Build partnerships with public authorities and non-government organizations active in migration and enhance collaboration with international organizations and like-minded partners
- Engage the private sector to improve access to information, services and livelihoods for migrants and displaced persons
- Provide livelihood support (cash grants and skill-based training) to vulnerable migrants and displaced persons, with clear targeting tools and criteria
- Strengthen staff and volunteer capacity and designate focal points for migration and RFL at provincial, district and local levels

Longer-term support from the IFRC network

The IFRC will support the Nepal Red Cross Society in active participation in global and regional platforms such as the Global Migration Task Force and the Asia Pacific Migration Network.

In addition, the IFRC will help strengthen efforts to promote safe migration by leveraging its regional presence for cross-border collaboration. The Nepal Red Cross Society will work closely with Red Cross and Red Crescent Societies in other countries to ensure consistent messaging and coordinated support for migrants.

The **American Red Cross** and the **British Red Cross** will assist the National Society through their support for the 'Strengthening Actions for Fostering Resilience through Individual, Community and Institutional Readiness in Nepal' (SAFER Nepal) project.



Values, power and inclusion

Nepal is a country of rich cultural diversity and evolving social norms, yet systemic inequalities continue to shape the lived experiences of its people. At the core of these dynamics are deeply rooted values, complex power structures and persistent challenges to inclusion.

Nepali society places high importance on family, community cohesion and cultural traditions. However, these values often coexist with practices that undermine human rights and gender equality. Harmful norms such as child marriage, [dowry-related violence](#) and menstrual isolation (Chhaupadi) persist despite legal prohibitions. While progress has been made—such as women holding 33.1 per cent of parliamentary seats and near gender parity in lower secondary school completion—social attitudes still limit women's autonomy and participation in decision-making. The growing emphasis on education and digital connectivity reflects a shift toward modern values, yet patriarchal norms remain influential in both offline and online spaces.

Power relations in Nepal are shaped by gender, caste, ethnicity and economic status. Marginalized groups—including Dalits, Indigenous communities, Madhesis and persons with disabilities—face structural barriers in governance, resource allocation and access to services. Despite constitutional guarantees, their representation in decision-making remains low, and landlessness continues to fuel vulnerability. Gender-based violence (GBV) illustrates how power imbalances manifest in

private and public spheres: in 2024 alone, over 1,300 cases of GBV were documented, with domestic violence and rape being [most prevalent](#). Digital spaces have introduced new dimensions of power and control—cyber violence against women surged by nearly 90 per cent between 2022 and 2024, with over 8,700 cases reported last year. These trends highlight how technology can amplify existing inequalities when legal frameworks and enforcement lag.

Nepal's [Gender Inequality Index](#) stands at approximately 0.50, ranking among countries with moderate inequality. Literacy rates have improved to 80.1 per cent for men and 65.2 per cent for women, yet disparities persist in higher education and employment. Marginalized communities experience lower health outcomes, limited livelihood opportunities and restricted access to social protection. Youth, who make up over 42 per cent of the population, face challenges in influencing governance and economic development, while an ageing population—now over 10 per cent of the total population—requires urgent attention to social security and care systems. Intersectional vulnerabilities are evident during disasters and emergencies, where women, [children](#), elderly people and persons with disabilities face heightened risks due to inadequate support and protection mechanisms.

Nepal's journey toward equity is marked by tension between progressive legal frameworks and entrenched socio-cultural norms. While values of community and solidarity remain

strong, they often reinforce hierarchical power structures that marginalize women and disadvantaged groups. Inclusion efforts must go beyond representation to address systemic barriers in education, health, governance and digital safety. Strengthening gender-sensitive laws, promoting social accountability and investing in inclusive development are critical to dismantling these inequalities and ensuring that no one is left behind.

Multi-year high level objectives of the National Society

The Nepal Red Cross Society is engaged in the new RED Education flagship initiative of the IFRC to make education communities and facilities safer, more inclusive and resilient. This global effort seeks to support 40 million children and youth by 2030, 1 million teachers and education personnel, in 100,000 schools and learning spaces, across 100 countries. It focuses on a three-fold approach:

- **‘Education Ready’** for school-based anticipatory action and preparedness interventions (e.g., cash and in-kind assistance, comprehensive risk management, teachers' training)
- **‘Education First’** for immediate relief assistance to affected education communities (e.g., education kits' distribution, set-up and running of temporary spaces and MHPSS)
- **‘Education Forward’** for recovery measures and longer-term development activities (e.g., schools' reconstruction, retrofitting and greening; cash and in-kind assistance for education access and continuity; set-up and running of RED education facilities and clubs)

The National Society aims to embed humanitarian values and Fundamental Principles across all programmes and operations, with a strong focus on youth engagement, inclusion and accountability. Some of the objectives of the National Society include to:

- Expand Junior and Youth Red Cross circles in schools and communities, building leadership and life skills through training in first aid, mental health, climate action, road safety, cyber safety and drug abuse prevention
- Support youth-led initiatives with seed funding, mentoring and networking at national and global level
- Institutionalize Dignity, Access, Participation and Safety (DAPS) in all services, ensuring child protection, prevention of sexual and gender-based violence and targeted support for marginalized groups, including women, persons with disabilities, LGBTIQ+ individuals, migrants and ethnic minorities
- Promote gender parity and women's leadership at all levels, integrating PGI principles into emergency and development programmes
- Mainstream Community Engagement and Accountability (CEA) through innovative feedback mechanisms,

ambassador networks and alignment with national strategies, ensuring transparent, responsive and community-driven programming

Planned activities in 2026

- Revise policies and strategies to strengthen humanitarian values, fundamental principles, and inclusive governance and establish Junior and Youth commissions in line with organizational statutes
- Form and reform youth circles nationwide, enhance youth leadership and life skills and ensure youth participation across planning, implementation, monitoring and reporting
- Scale Youth Adaptation training and youth-led initiatives on climate action, road safety, cyber education, first aid, blood donation, disaster response, WASH, migration, human trafficking, sexual and reproductive health, violence prevention and livelihoods
- Promote women's leadership (targeting at least 40 per cent representation in decision-making roles) and increase participation of persons with disabilities and marginalized groups in programme implementation
- Update and enforce PGI policies, guidelines, strategies and safeguarding mechanisms; strengthen inclusive recruitment, career development and vetting processes
- Institutionalize disaggregated data systems and standard tools, enhance feedback and two-way communication mechanisms (including radio and hotline) and ensure accessible information materials in local languages
- Establish and upgrade dignified, child-, gender-, and disability-friendly spaces and infrastructures in service centres (including breastfeeding corners, counselling rooms linked with mental health and psychosocial support (MHPSS), menstrual hygiene management rooms and accessible latrines)
- Create strong referral systems for cases of sexual and gender-based violence and sexual exploitation and abuse, with confidential reporting and case management
- Implement inclusive relief design (dignity kits, assistive devices, cash-based support), define PGI minimum commitments across programmes and conduct audits and self-assessments
- Capture and share best practices and impact stories, conduct exposure visits for peer learning and advocate on national platforms to profile inclusive programming

Longer-term support from the IFRC network

The IFRC will invest in youth and volunteer development within the National Society Development plan, integrate humanitarian values and fundamental principles into training

and strengthen feedback and safeguarding systems. It will resource national and provincial youth gatherings, support digital platforms for youth engagement and enhance inclusive mechanisms for Protection, Gender and Inclusion (PGI) and Community Engagement and Accountability (CEA) across all programmes.

The **British Red Cross** will support youth capacity building (including [Youth Adaptation](#)), institutionalize safer recruitment and safeguarding and help update frameworks and training packages for inclusive programming and accountable community engagement.

The **Danish Red Cross** will develop PGI and CEA minimum considerations across sectors, strengthen disaggregated data systems and support youth leadership, advocacy and inclusive early warning initiatives.

The **Finnish Red Cross** will integrate youth agendas into new projects, promote environmentally sustainable practices in youth-led actions and co-fund inclusive infrastructure and learning exchanges.

The **Italian Red Cross** will contribute to Youth Adaptation and cross-border peer learning, support capacity building for youth volunteers and help document and disseminate innovative youth initiatives.

The **Japanese Red Cross** will strengthen youth engagement in schools and communities, support youth-led disaster risk reduction and WASH actions and co-invest in structured youth leadership programmes.

ENABLING LOCAL ACTORS

The Nepal Red Cross Society is committed to pursuing its institutional strengthening and has carried out the self-assessment part of the IFRC's Organisational Capacity Assessment and Certification (OCAC) process in 2014. The self-assessment is intended to capture the strengths and weaknesses of National Societies as a whole in relation to a wide range of organizational capacities.

The Nepal Red Cross Society is also committed to the IFRC Preparedness for Effective Response (PER) process and is currently in the work plan phase. The PER Approach is a continuous and flexible process that enables National Societies to assess, measure and analyze strengths and gaps in preparedness and response mechanisms and ultimately take necessary action to improve.



Strategic and operational coordination

Multi-year high level objectives of the National Society

- Build long-term strategic partnerships with government, UN agencies, technical institutions and academia
- Shift from project-based cooperation to multi-year agreements supporting health, climate action, disaster risk management and community development
- Localize responsibilities and resources across all tiers of government, establishing municipal branches with clear MOUs
- Strengthen coordination through flagship programmes (blood transfusion, ambulance, first aid, disaster preparedness, youth engagement)
- Actively engage in national platforms such as Community-Based Disaster Risk Management (CBDRM), maintain

linkages with NDRRMA and Home Affairs and co-lead the [Shelter Cluster](#)

- Expand partnerships with UN, diplomatic missions, private sector (CSR), academia and media for innovation and resource mobilization
- Institutionalize youth engagement via coordination with government bodies, schools and law enforcement
- Ensure alignment with the 8th Development Plan through regular meetings, technical working groups and project mapping

Longer-term support from the IFRC network

The IFRC will strengthen the National Society's engagement with government ministries and national coordination platforms in disaster management, health, climate action, and youth development. It will support leadership in mechanisms

such as the CBDRM Platform, Shelter Cluster and [Early Warning for All initiative](#).

Leveraging its diplomatic status, the IFRC will represent the network in donor forums and the Humanitarian Country Team, ensuring unified messaging and coordinated engagement. Partnerships will expand to include environmental and conservation actors for integrated climate and ecosystem-based programming.

Coordination will be enhanced through joint planning, shared information and collective resource mobilization, including access to emergency funding. The IFRC will support localization efforts, policy engagement and participation in national, regional and global platforms. Capacity building, peer learning and harmonized contributions will reinforce Shelter Cluster leadership and engagement in national and global coordination mechanisms.

The **American Red Cross** provides rapid response financing through crisis modifiers and supports cash preparedness capacity enhancement.

The **Austrian Red Cross** engages in joint emergency coordination and learning within the IFRC-wide response system. It also supports cash preparedness strengthening and contributes to harmonized emergency response coordination.

The **British Red Cross** participates in joint planning, shared learning and coordinated shelter/DRR initiatives and offers emergency response funding and contributes to branch-level resource-mobilization capacity through ongoing projects.

The **Danish Red Cross** supports the Nepal Red Cross Society engagement in Anticipatory Action, climate initiatives and joint resource mobilization including co-chairing the national Community of Practice. It contributes to strengthening partnerships with youth platforms such as the AIN Youth Working Group and the National Youth Council.

The **Finnish Red Cross** supports rapid response mechanisms and contributes to aligned programming under the Unified Plan.

The **Swiss Red Cross** provides rapid response and development funding, including support for branch-level resource mobilization and contributes technical expertise in shelter, health and localization initiatives.



National Society development

Multi-year high level objectives of the National Society

- Restore trust and strengthen institutional integrity through improved governance, transparency and accountability
- Support recovery from the recent governance crisis and implement structural reforms outlined in the revised constitution, such as establishing municipal branches with clear plans and capacity-building measures
- Finalize advocacy for a Red Cross Law to secure the National Society's humanitarian mandate and prevent future governance challenges
- Restructure organization to align departments and divisions with new constitutional provisions, and adopt a new Strategic Plan incorporating National Society development as an enabling function following governance reforms (the year 2026 will serve as a transition period to define priority actions)
- Focus on volunteer development, including improved data systems for youth and volunteers, insurance coverage through IFRC's global mechanism, and the establishment of a Solidarity Fund to protect volunteers in emergencies and adverse situations
- Strengthen youth engagement through provincial gatherings and partnerships with government bodies, schools and law enforcement, fostering leadership and innovation
- Enhance financial sustainability through domestic fundraising, resource mobilization at local levels and partnerships with private sector actors under Corporate Social Responsibility (CSR) initiatives
- Collaborate with academic and research institutions to improve technical quality and drive innovation across programmes

Longer-term support from the IFRC network

The IFRC will prioritize strengthening the Nepal Red Cross Society's legal and institutional foundations. Key actions include advocacy and technical support for the adoption of a Red Cross Law, ensuring a strong legal base and reaffirming the National Society's auxiliary role. The IFRC will assist in finalizing and endorsing revised Statutes in line with global guidance and support structural realignment based on constitutional changes. Governance and integrity will be reinforced through improved compliance mechanisms, including enhanced investigation and audit capacity and updated human resource, finance and procurement policies.

Volunteer and youth development will remain central. The IFRC will help update the volunteer framework to build a sustainable, community-based network, supported by global insurance coverage and a Solidarity Fund for volunteer protection. Youth engagement will follow a two-track approach: promoting leadership and representation in decision-making while empowering youth-led action through initiatives such as the 'Paribartak' Campaign, which provides grants, training (including Y-Adapt) and digital platforms for engagement.

The IFRC will also strengthen the National Society's technical systems by updating planning, monitoring, evaluation and reporting (PMER) policies and institutionalizing Information Management functions. Branch Organizational Capacity Assessment (BOCA) roll-out will continue nationwide, linked to existing National Society development projects. Financial sustainability will be addressed through business development plans for flagship services such as ambulances, blood transfusion, first aid and disaster management training. Recommendations from the Global Advisory Panel will guide improvements in blood service governance and quality assurance.

The **British Red Cross** will focus on strengthening Community Engagement and Accountability (CEA) and supporting project management at the provincial level. It will also contribute to youth and climate change capacity-building in collaboration with the Red Cross Red Crescent Climate Centre. The British Red Cross will continue to provide technical expertise under the Consolidated National Society Development Plan.

The **Danish Red Cross** will prioritize youth engagement and National Society development through the Integrated Community Engagement (ICE) Project in Lamjung. It will also support branch development and capacity-building initiatives aligned with federalization and decentralization processes.

The **Finnish Red Cross** will integrate the youth agenda into its new project under the Resilient Development Initiative (REDI), ensuring youth participation in resilience-building and disaster preparedness activities.

The **Japanese Red Cross Society** will support youth engagement and Water, Sanitation and Hygiene (WASH) initiatives, as well as school-based Disaster Risk Reduction projects. These efforts will strengthen resilience and promote youth leadership in disaster preparedness.

The **Italian Red Cross** will provide bilateral support and contribute to regional initiatives such as Y-Adapt, promoting youth-led climate action and capacity-building across Nepal.

The **Swiss Red Cross** will focus on provincial-level project management and branch development, contributing to the implementation of streamlined BOCA processes and supporting the National Society's structural reforms under the revised constitution.



Humanitarian diplomacy

Multi-year high level objectives of the National Society

- Reinforce its leadership, secure its legal mandate and strengthen its influence in shaping humanitarian and development agendas in Nepal
- Develop advocacy tools on Red Cross Law, emblem use, resilience and humanitarian issues such as Restoring Family Links (RFL)
- Organize sensitization workshops for parliamentarians, senior officials, volunteers and staff on Nepal Red Cross Society's auxiliary role, mandate and humanitarian principles
- Produce high-quality publications and reports showcasing its contributions to national priorities
- Strengthen communication and advocacy capacity through updated policies, digital platforms and training for staff and volunteers
- Conduct regular dialogue sessions with government authorities at all levels and share learning with humanitarian and development partners
- Enhance capacity for policy formulation, data literacy and localization of procedures to sustain flagship programmes such as blood services, ambulances, first aid and RFL
- Enhance localized engagement on emerging issues (climate action, non-communicable diseases, anticipatory)

action, PGI, youth empowerment), promoting respect for humanitarian principles and international humanitarian law (IHL) among authorities and security forces

- Promote its image and advocate for change, affecting public behaviour, policies and decisions on a domestic, regional and global scale

Longer-term support from the IFRC network

The IFRC will lead advocacy for a Red Cross Law and Disaster Risk Management Act amendments to strengthen the

National Society's mandate and anticipatory action. The IFRC will enhance the Nepal Red Cross Society's visibility via joint campaigns, global platforms and high-level engagement with government, donors and UN agencies. Capacity-building in communications, policy engagement and advocacy will be prioritized, alongside coordinated messaging and promotional materials.

Participating National Societies supporting the Nepal Red Cross Society in advancing humanitarian diplomacy include the **British Red Cross, Canadian Red Cross, Danish Red Cross, Finnish Red Cross** and the **Swiss Red Cross**.



Accountability and agility (cross-cutting)

Multi-year high level objectives of the National Society

- Strengthen its accountability framework to ensure transparency and compliance across all operations
- Enhance internal control systems, establishing a compliance and risk management unit, and rolling out safeguarding policies organization-wide
- Review human resource systems comprehensively, focusing on recruitment, performance management, career development and security
- Reinforce financial accountability through consolidated financial statements, audits and rationalized archiving processes
- Develop an operational procedure to unify rules and guidelines across all levels, supported by training and knowledge-sharing mechanisms
- Advance its digitalization agenda to improve efficiency and accessibility
- Reduce the digital divide by upgrading IT and information management systems, institutionalizing the Management Information System (MIS) for volunteer management, relief stock tracking, integrated reporting and feedback mechanisms
- Functionalize the Emergency Operations Centre (EOC) fully to enable timely disaster response
- Digitize blood transfusion services nationwide and equip all ambulances with GPS linked to health ministry dispatch centres
- Digitalize administrative and HR processes and strengthen virtual learning platforms for staff and volunteer training
- Foster a culture of innovation across leadership and programmes by developing innovative financing strategies for flagship services such as blood transfusion,

ambulance, and first aid, and leveraging digital tools and volunteer networks for nationwide campaigns on humanitarian principles and values

- Focus on programmatic innovations such as anticipatory action, cash transfers, green energy in WASH, nature-based solutions and advanced volunteer engagement tools
- Document innovative practices and case studies and promote them to encourage cross-learning and replication

Longer-term support from the IFRC network

The IFRC will support the National Society in strengthening accountability by aligning HR, finance, logistics and compliance systems, ensuring zero tolerance for fraud and safeguarding. It will promote gender and diversity in recruitment, provide equitable training opportunities and reinforce risk management culture.

For digital transformation, the IFRC will support IT infrastructure upgrades, MIS institutionalization, EOC functionality and virtual learning platforms. The IFRC will also advance anticipatory action, ambulance upgrades, and blood service digitalization, while promoting joint programming in National Society development, health, WASH and disaster preparedness. Security monitoring and coordination with the Nepal Red Cross Society, the ICRC and partners will remain a priority.

The **American Red Cross** will provide technical expertise in information management and support the Nepal Red Cross Society in institutionalizing planning, monitoring, evaluation and reporting (PMER) and IM systems. It will also collaborate on innovation and anticipatory action initiatives.

The **Danish Red Cross** will lead efforts to strengthen information management capacity within the National Society and support its role as co-chair of the Anticipatory Action Community of Practice. It will also contribute to digital transformation initiatives and policy engagement.

THE IFRC NETWORK

The IFRC

The IFRC is currently present in Nepal through a country delegation first established in 1965, providing support to the Nepal Red Cross Society programmes and capacity building. The longer-term mission of IFRC is to facilitate organizational growth, technical capacities, partnerships and resource mobilization that enable the Nepal Red Cross Society to

deliver on its humanitarian mandate in the country through the provision of technical support, advocacy, representation and coordination functions.

In 2025, the IFRC has supported the Nepal Red Cross Society through a DREF operation in relation to drought.



Nepal Red Cross Society volunteers are reaching out to women and children and conducting emergency WASH activities under disaster response activities. (Photo: Nepal Red Cross Society)

IFRC membership coordination

IFRC membership coordination involves working with National Societies to assess the humanitarian context, agree on common priorities and jointly develop common strategies. This includes addressing issues such as obtaining greater humanitarian acceptance and access, mobilizing funding and other resources, clarifying consistent public messaging, and monitoring progress. It also entails ensuring that strategies and programmes in support of people in need incorporate clarity of humanitarian action while linking with development assistance and contributing to reinforcing National Societies in their respective countries, including through their auxiliary role.

Currently, six participating National Societies have a physical presence in Nepal, including **American Red Cross**, **British Red Cross**, **Canadian Red Cross**, **Danish Red Cross**, **Finnish Red Cross**, and **Swiss Red Cross**. Other National Societies support the Nepal Red Cross Society remotely, either through bilateral partnerships—such as the **Red Cross Society of China**, **Republic of Korea National Red Cross**, **Luxembourg Red Cross** and **Thai Red Cross Society**—or through IFRC operational plans and appeals, including support from American Red Cross, British Red Cross and **German Red Cross**. Additionally, the Red Cross Red Crescent Climate Centre contributes to programming in Nepal in coordination with the IFRC and participating National Societies. The National Society's longer-term partners support the Nepal Red Cross Society through specific focus areas:

The **American Red Cross** supports the National Society in delivering community-based disaster risk reduction in the

Sudurpashchim province and provides technical support in PMER and information management activities.

The **British Red Cross** coordinates with the **Swiss Red Cross** to support the National Society to deliver integrated programming in Lumbini and Karnali. It also supports climate-smart WASH activities with the Finnish Red Cross and the IFRC, as well as livelihoods, cash and voucher assistance ([CVA](#)), [preparedness](#), migration and community engagement.

The **Canadian Red Cross** supports the Nepal Red Cross Society to deliver pre-hospital care and community-based health activities.

The **Danish Red Cross** supports the National Society to deliver activities across inclusive disaster risk reduction, anticipatory action, shock-responsive social protection, piloting, [PGI](#) and [youth engagement](#).

The **Finnish Red Cross** supports the Nepal Red Cross Society to strengthen its climate action, early warning early action, PGI, WASH and [CEA](#).

The **Japanese Red Cross Society** supports community-based disaster risk reduction and youth action for [WASH](#) in Nepal.

The **Swiss Red Cross** supports the Nepal Red Cross Society to deliver community health activities and strengthen branch development and [community-based disaster risk reduction](#).

Movement coordination

The Nepal Red Cross Society ensures regular exchanges with the IFRC, the International Committee of the Red Cross and participating National Societies, for the alignment of support and action between Movement partners. In times of emergencies, closer coordination is organized. This is carried out in line with the Strengthening Movement Coordination and Cooperation ([SMCC](#)) principles, and the newly-adopted [Seville Agreement 2.0](#).

In Nepal, the ICRC promotes international humanitarian law ([IHL](#)) and supports the National Society in Restoring Family Links ([RFL](#)). Nepal is covered by the ICRC regional delegation in India which carries out most of its work in coordination with the National Society.

Coordination with other actors

The Nepal Red Cross Society's leadership role in the shelter cluster significantly contributes to the localization of the international humanitarian system. Its local knowledge, contextual understanding, and established community networks enhance the effectiveness, relevance, and connectedness of the overall humanitarian shelter response.

In line with its auxiliary role, the Nepal Red Cross Society coordinates closely with public authorities on disaster management and health through government-led platforms and mechanisms. This includes line agencies under the Ministry of Home Affairs, such as the National Emergency Operating Centre and the National Disaster Risk Reduction and Management Authority. Coordination also extends to provincial and local levels, including local governments, district disaster management committees and national clusters.

The Nepal Red Cross Society maintains long-standing partnerships with UN agencies such as UNICEF, UNFPA and WFP for humanitarian response and development projects, including disaster risk reduction, anticipatory action and vaccination campaigns. During emergencies, the National Society and IFRC coordinate with the UN Resident Coordinator's Office.

Shelter cluster coordination is a regular activity of the Nepal Red Cross Society and IFRC at the country level, as part of the wider Humanitarian Country Team and under the leadership of the Ministry of Urban Development. The shelter cluster is chaired by the Department of Urban Development and Building Construction under the Ministry of Urban Development, with IFRC serving as co-chair in coordination with the Nepal Red Cross Society.



The International Federation of Red Cross and Red Crescent Societies (IFRC) is the world's largest humanitarian network, with 191 National Red Cross and Red Crescent Societies and around 16 million volunteers. Our volunteers are present in communities before, during and after a crisis or disaster. We work in the most hard to reach and complex settings in the world, saving lives and promoting human dignity. We support communities to become stronger and more resilient places where people can live safe and healthy lives, and have opportunities to thrive.

About the plan

The plan reflects the priorities of the host National Society, the IFRC and National Societies providing international support, for 2026 and subsequent years. It is aligned with IFRC [Strategy 2030](#), representing the collective ambitions of the IFRC membership, and is the result of a joint planning process and will serve for joint monitoring and reporting. It will be revised on an annual basis to adjust priorities and funding requirements to the needs in-country.

Explanatory note on funding requirements and definitions

- The total funding requirements show what the IFRC network seeks to raise for the given year through different channels: funding through the IFRC, through participating National Societies as bilateral support, and through the host National Society from non-IFRC network sources. All figures should include the administrative and operational costs of the different entities
- Host National Society funding requirements not coming from IFRC network sources can comprise a variety of sources, as demonstrated when reporting on income in the [IFRC network databank](#)
- Participating National Society funding requirements for bilateral support are those validated by respective headquarters, and often represent mainly secured funding
- IFRC funding requirements comprise both what is sourced from the IFRC core budget and what is sought through emergency and thematic funding. This includes participating National Societies' multilateral support through IFRC, and all other IFRC sources of funding
- Figures for the years beyond 2026 most often represent partial requirements that are known at time of publication. Many National Societies have annual internal approval processes for funding requirements, and lower figures do not mean a decrease in funding requirements in future years
- Missing data and breakdowns: data may not be available from all IFRC network members for funding requirements. This may lead to inconsistencies across different reporting tools as well as potential under-estimation of the efforts led by all
- Reporting bias: the data informing this Federation-wide overview is self-reported by each National Society (or its designated support entity) which is the owner and gatekeeper, and responsible for accuracy and updating. IFRC tries to triangulate the data provided by the National Societies with previous data and other data in the public domain
- **Definitions:**
 - » **Local units:** ALL subdivisions of a National Society that coordinate and deliver services to people. These include ALL levels (provincial, state, city, district branches, sections or chapters, headquarters, and regional and intermediate offices, as well as community-based units)
 - » **Branches:** A Branch has its roles, responsibilities and relationship with the National Headquarters defined through the National Society's Statutes, including the level of autonomy given, especially in the area of its legal status, mobilising local resources and building local partnerships, and the decisions it makes. It has a local-level decision-making mechanism through its Branch members, board and volunteers, equally defined through the National Society's Statutes

Additional information

- [IFRC network country plans](#) • [All plans and reports](#)
- Data on National Societies on [IFRC network databank](#)
- Live data on active emergency operations on [IFRC GO platform](#)
- Live data on [IFRC-Disaster Response Emergency Fund Response and Anticipatory pillars](#)
- [Evaluations and research bank](#) • [Donor response reports](#)

Contact information

Umesh Dhakal

Executive Director
Nepal Red Cross Society
Kathmandu, Nepal
T +9779851056369
umesh@nrccs.org

[nepal-red-cross-society](#)

Herve Gazeau

Head of Strategic Partnerships & Resource Mobilization
IFRC Asia Pacific Regional Office, Kuala Lumpur
T +6019 268 6503
herve.gazeau@ifrc.org

David Fisher

Head of Delegation
IFRC Country Delegation Nepal
Kathmandu
T +41-79-600 5705
david.fisher@ifrc.org

Sumitha Martin

Lead
IFRC Global Strategic Planning & Reporting Centre
New Delhi
sumitha.martin@ifrc.org