



Submerged household in Eastern Cape

Appeal: <b>MDRZA021</b>	Total DREF Allocation: <b>CHF 497,202</b>	Crisis Category: <b>Yellow</b>	Hazard: <b>Flood</b>
Glide Number: -	People Affected: <b>92,145 people</b>	People Targeted: <b>11,000 people</b>	
Event Onset: <b>Sudden</b>	Operation Start Date: <b>16-05-2025</b>	New Operational End Date: <b>30-11-2025</b>	Total Operating Timeframe: <b>6 months</b>
Reporting Timeframe Start Date: <b>16-05-2025</b>		Reporting Timeframe End Date: <b>15-06-2025</b>	
Additional Allocation Requested: <b>134,939</b>		Targeted Regions: <b>Eastern Cape, Free State, Kwazulu-natal, North-west, Northern Cape</b>	

# Description of the Event

## SOUTH AFRICA: Floods

June 2025



The maps used do not imply the expression of any opinion on the part of the International Federation of the Red Cross and Red Crescent Societies or National Societies concerning the legal status of a territory or of its authorities.

Map data sources: GADM, IFRC, South Africa Red Cross. Map produced by: IFRC Africa Regional Office.

## Date of event

10-05-2025

## What happened, where and when?

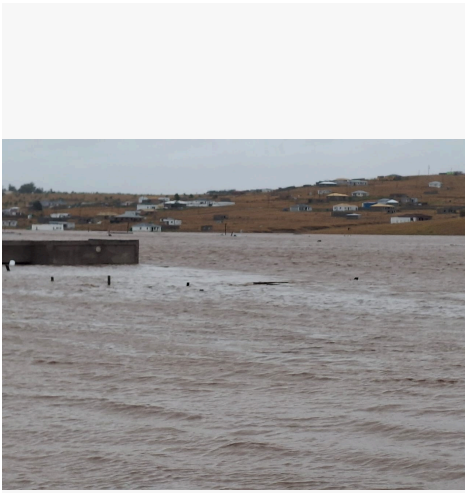
Since late April, South Africa has been experiencing a cascade of extreme weather events including river overflows, flash floods, and destructive storms across multiple provinces.

The first wave, from 30 April to 2 May, severely affected KwaZulu-Natal, North West, and Northern Cape, impacting approximately 22,145 people (4,429 households). In the Northern Cape, historic flooding of the Orange River displaced 1,139 households after water flow at Augrabies Falls reached catastrophic levels 80 times the seasonal average. In the North West province, the Vaal River overflowed, flooding over 1,300 households and prompting mass evacuations, particularly in Ramotshere Moiloa and Ngaka Modiri Molema municipalities. Eighteen people were injured across the affected regions.

This was followed by an even more severe wave of inclement weather beginning on 10 June 2025. Between 10–11 June, a second wave of weather events struck the Eastern Cape, Free State, KwaZulu-Natal, and Western Cape, affecting over 70,000 people (14,000 households). Severe floods attributed to torrential rainfall exceeding 160 mm in 24 hours caused widespread destruction. In Eastern Cape, the impact of the extreme weather event has rapidly escalated into one of the most severe humanitarian emergencies the region has faced in recent memory. As of the 16 June 2025, the death toll from flooding in the Eastern Cape (Mthatha) has risen to 92. This was accompanied by strong winds and hailstorms in some areas. 107 schools were destroyed and basic services (water, shelter, healthcare) severely disrupted. 24 schools, including 9 early childhood centres, were destroyed. This unprecedented weather event struck following an Orange Level 9 alert issued by the South African Weather Service.

On 12 June 2025, the Minister of Cooperative Governance and Traditional Affairs declared the situation a national state of disaster. This designation enables the activation of coordinated interventions across government departments and humanitarian actors, led by provincial and district-level Joint Operations Centres (JOCS). The South African Red Cross Society (SARCS) is using this declaration as the formal trigger to initiate a DREF operation in support of the national response.





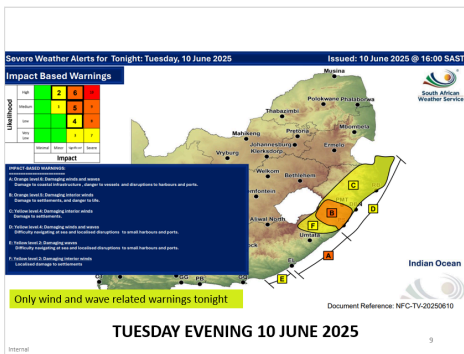
Submerged households and livelihoods in Mthatha



Volunteers conducting assessments in KZN



Relief items being distributed in Eastern Cape



Severe weather Alerts (10 June 2025)

## Scope and Scale

The extreme weather experienced between 30 April to 11 June 2025 have impacted in total 92,145 people. The accurate figures could be higher however, given the extensive flooding and infrastructure damage which continue to restrict access to large parts of the affected regions, hindering full evaluations in hard-to-reach regions. Preliminary impact assessments conducted by local disaster management authorities and verified by the South African Red Cross Society (SARCS) indicate extensive damage across multiple sectors. Below is a summary of the affected provinces by location:

In KwaZulu-Natal, North West, and Northern Cape, over 22,145 people (4,429 households) were affected between 30 April and 2 May. 18 people were reported injured across the affected regions. These floods had the worst impact in the informal settlements and rural communities lacking adequate infrastructure and early warning systems.

- In Northern Cape, historic flooding of the Orange River impacted 1,139 households, with water flow at Augrabies Falls reaching 4,000 m<sup>3</sup>/s—80 times above normal. 141 HH (705 people) were severely affected in Ga-Segonyana
- In North West, the Vaal River breached its banks, flooding 1,300 households, including 160 homes fully submerged in Ramotshere Moiloa. 298 (1490 people) households severely affected in Ngaka Modiri Melema with 118 individuals accommodated in evacuation centers and Ramotshere Municipality
- In Kwa-Zulu Natal, 561 HH (2805 people) were affected in Zulu land, King Cetyayo, uMkhanyakude, eThekwin

On 10 June 2025, unprecedented extreme weather struck Eastern Cape and KwaZulu-Natal, affecting over 14,000 households (70,000 people). More than 7,700 households (38,500 people) were severely impacted, with 5,300 households (26,500 people) displaced into already overcrowded, inadequate shelters. The disaster destroyed 91 schools, devastated livelihoods, and severely disrupted access to water, health, and social services. Heavy rainfalls accompanied with flooding, hailstorms, and strong winds persisted in Eastern Cape, KZN, and Free State provinces. Cumulatively, the severity of the events between 10 to 11 June led to extensive impacts. Based on preliminary data, more than 70,000 people (14,000 households) were affected, including over 8,700 households (43,500 people) classified as severely affected. The storms caused widespread damage to infrastructure, with 107 schools destroyed across the 4 affected provinces, livelihoods disrupted, and access to basic services such as healthcare and clean water severely compromised.



- In Eastern Cape, 92 deaths were recorded in Mthatha alone.

Affected households is 8,200 (41,000 people). 5,000 households (25,000 people) of these are under OR Tambo, 1,500 households (7,500 people) of these under Amathole and 1,700 (8,500) under Alfredo Nzo. Displaced individual so far is 3,675 household. Include: 2,452 OR Tambo, 1,090 Amathole DM, 133 Alfred Nzo.

- In KwaZulu-Natal, over 4,101 households (20,505 people) were affected, including 3,800 homes destroyed or damaged and 1,625 households displaced.

The impact is distributed as follows: 728 households (3640 people) affected in uMgungundlovu, 682 of these households (3410 people) are under Harry Gwala, 866 of these are under Ugu, 716 households (3580 people) under uMzinyathi, 700 households (3500 people) under Uthukela, 409 households (2045 people) under King Cetshwayo. Total 906 families are displaced in KwaZulu Natal following the events of June. nclude 125 Umkhanyakude, 104 Harry Gwala, 99 Ugu, 133 eThekweni, 111 Uthukela, 167 Ilembe and 167 King Cetshwayo District Municipalities. 24 schools, including nine early childhood development centres, were destroyed across the province with this second event. Although no fatalities were confirmed in KwaZulu-Natal at the time of reporting, access challenges hindered comprehensive assessments.

- Free state: Total number of affected households is 870 in Thabo Mofutsanyana district with no displacements

- Western Cape: Total number of affected households is 230 in Knysna, Garden Route municipality with no displacements.

These disasters have plunged thousands into immediate crisis, stripped of basic necessities—food, clean water, shelter, and life-saving medical care. Livelihoods obliterated, and access to health and social services severely disrupted. Without swift and decisive intervention, the long-term consequences will be devastating, with implications for education, health outcomes, and economic recovery in the region. Furthermore, several newly affected areas are not covered under current or previous DREF operations, leaving critical gaps in humanitarian coverage. Swift, coordinated action is essential as to prevent further deterioration of conditions but also this is a call for SARCS mandate following the declaration of Disaster state by Government on 12 June.

These back-to-back disasters are part of an escalating pattern of climate-induced emergencies in Southern Africa, colliding with structural vulnerabilities such as poverty and inadequate infrastructure. While SARCS has been actively responding—deploying volunteers, conducting assessments, and providing relief, the scale of the crisis exceeds national capacity and requires urgent international support. It also reinforces the need for anticipatory approaches, such as the Early Action Protocol (EAP), to trigger early interventions based on forecasted risks.

## Source Information

Source Name	Source Link
1. The Citizen	<a href="https://www.citizen.co.za/news/south-africa/weather/weather-forecast-wednesday-23-april-2025/">https://www.citizen.co.za/news/south-africa/weather/weather-forecast-wednesday-23-april-2025/</a>
2. East Coast Radio	<a href="https://www.ecr.co.za/news/news/human-settlements-counting-damage-costs-after-rain/#:~:text=KwaZulu-Natal%20Human%20Settlements%20said%20it%20has%20been%20given,around%2016%20families%20were%20moved%20to%20temporary%20shelters.">https://www.ecr.co.za/news/news/human-settlements-counting-damage-costs-after-rain/#:~:text=KwaZulu-Natal%20Human%20Settlements%20said%20it%20has%20been%20given,around%2016%20families%20were%20moved%20to%20temporary%20shelters.</a>
3. Briefly	<a href="https://briefly.co.za/south-africa/214913-hundreds-north-west-residents-affected-by-vaal-river-flooding/">https://briefly.co.za/south-africa/214913-hundreds-north-west-residents-affected-by-vaal-river-flooding/</a>
4. Briefly	<a href="https://briefly.co.za/south-africa/214913-hundreds-north-west-residents-affected-by-vaal-river-flooding/">https://briefly.co.za/south-africa/214913-hundreds-north-west-residents-affected-by-vaal-river-flooding/</a>
5. Department of Cooperative Governance and Traditional Affairs (COGTA)	<a href="https://www.cogta.gov.za/index.php/2024/06/11/minister-nkadimeng-to-visit-the-disaster-areas-in-kzn/">https://www.cogta.gov.za/index.php/2024/06/11/minister-nkadimeng-to-visit-the-disaster-areas-in-kzn/</a>
6. News Room Afrika	<a href="https://www.youtube.com/watch?v=HjJCiQEfgBk">https://www.youtube.com/watch?v=HjJCiQEfgBk</a>
7. Eyewitness News	<a href="https://www.ewn.co.za/2025/04/26/kzn-flooding-human-settlements-dept-provides-temporary-shelter-to-affected-families">https://www.ewn.co.za/2025/04/26/kzn-flooding-human-settlements-dept-provides-temporary-shelter-to-affected-families</a>

## Summary of Changes

Are you changing the timeframe of the operation	No
-------------------------------------------------	----



Are you changing the operational strategy	Yes
Are you changing the target population of the operation	Yes
Are you changing the geographical location	Yes
Are you making changes to the budget	Yes
Are you requesting an additional allocation?	Yes

**Please explain the summary of changes and justification:**

Following the second wave of severe weather that affected South Africa between 9 and 11 June 2025, the South Africa Red Cross Society (SARCS) is informing stakeholders of the scale-up of the DREF operation MDRZA021. This update outlines the operational adjustments made in response to the recent floods and evolving needs, particularly in the WASH sector, while also providing progress on the initial response.

Based on preliminary assessments, SARCS is expanding its response to cover one additional province and increase the number of people assisted to 11,000 (2,200 households)—adding 1,200 households to the original 1,000 initially targeted. This scale-up is supported by a second allocation from the IFRC-DREF amounting to CHF 133,939, bringing the total funding for the SARCS response to CHF 497,202. Of this, 65% is allocated to life-saving relief distributions, and over 15% to humanitarian services, community engagement, and risk prevention awareness activities.

Key operational changes include:

- Revision of the provinces prioritized in the response to 4: KwaZulu-Natal (KZN), North West, and Northern Cape from initial plan and Eastern Cape (newly affected). In KZN, new target will prioritize the following newly affected municipalities: Harry Gwala, uGu, uThukela, and King Cetshwayo.
- With the continuous dynamic of the situation and diversity of impact and needs, The NS will continue implementing unrestricted multipurpose CVA as a prioritized approach. The majority of the budget revision is to extend the cash assistance to additional 1200HH newly affected. This brings the total number of CVA recipients to 2,200 households (receiving ZAR 2,500), benefiting approximately 12,000 people. This update also inform on the Reallocation of the budget planned for water purification to the expansion of the cash to the newly affected families. The National Society initially planned to procure 1,000 water purification kits based on early assessments. However, by the time DREF funds were received, updated assessments showed the need had been met by the Department of Health.
- The requested top-up will also allow extending the response team of 40 additional volunteers that will cover First aid, psychosocial support (PSS), and health and WASH promotion but also safeguarding risk prevention messages in the new targeted areas.

SARCS has been responding to the weather and floods impact since May through the initial DREF allocation of CHF 362,263 approved on 16 May 2025 following the riverine & flash floods that hit KwaZulu-Natal (KZN), North West, and Northern Cape provinces between 30 April and 2 May 2025. So far, 900HH have receive the assistance from the initial plan. The achievements include:

- 3 detailed needs assessments conducted (1 per province).
- 2,325 people reached with awareness on safe shelter and “Build Back Better” techniques.
- Hot meals provided to 6,875 people across three provinces. Thanks to the 03 mobile kitchen deployed.
- 2,000 individuals reached with psychosocial support and First Aid (MHPSS).
- 2,560 people reached with hygiene promotion and sensitization.
- 30 volunteers trained on health and hygiene promotion; also briefed on CEA and minimum PGI standards.
- 5,000 people reached with PGI awareness. This include 1,000 children engaged through child-friendly spaces and safeguarding sensitization activities with their parents.

Operation monitoring is closely done with the support of the 1 surge personnel already deployed in country and the monitoring structure put in place with Secretariat. Field visits and coordination meetings held. Coordination with government agencies and private sector is being strengthened with continuous meeting and engagement.

## Current National Society Actions

### Start date of National Society actions

23-04-2025



<p><b>Livelihoods And Basic Needs</b></p>	<p>Given the scale of displacement, loss of assets, and interruption of income-generating activities, SARCS has prioritized the provision of basic needs support to the most affected families. Emergency relief kits—including blankets, clothing, hygiene items, and water purification kits—have been distributed to families in temporary shelters across eThekweni, Umkhanyakude, and Zululand districts. Food parcels are being provided through both direct distribution and coordination with local food banks and community kitchens. The collapse of local economies and subsistence farming activities has made it essential for SARCS to initiate market assessments to determine feasibility and plans to roll out multi-purpose cash assistance in selected areas, subject to donor support.</p> <p>Recognizing the secondary impacts of the floods on livelihoods, SARCS is exploring early recovery interventions, including tools and seeds for replanting, support to micro-entrepreneurs, and linkages to government social protection schemes such as the Social Relief of Distress (SRD) grant. Engagements with the Department of Social Development (DSD) and Department of Agriculture are ongoing to coordinate livelihood recovery and ensure affected families are included in longer-term resilience programming.</p>
<p><b>Community Engagement And Accountability</b></p>	<p>SARCS has embedded CEA as a core component of its disaster response, ensuring that affected individuals are not only recipients of aid but are actively involved in shaping the response. CEA mechanisms were activated as soon as early warnings were disseminated, with volunteers using door-to-door outreach, community loudhailers, and radio messaging to inform communities about the risks, evacuation procedures, and safety protocols.</p> <p>In temporary shelters and host communities, feedback mechanisms have been established through hotlines, suggestion boxes, and direct engagement with community leaders to collect real-time feedback, address misinformation, and identify priority needs. Messages related to health (especially cholera prevention and hygiene), child protection, and food safety are being circulated in local languages. SARCS is also working closely with faith-based organizations, local NGOs, and traditional authorities to ensure cultural sensitivity and community ownership of the response.</p>
<p><b>Assessment</b></p>	<p>Rapid needs assessments were launched immediately following the first wave of floods, and have since been expanded as the situation worsened. SARCS deployed trained teams to conduct multi-sectoral assessments across affected districts, focusing on identifying needs related to shelter, food, water and sanitation, protection, and health. These assessments were conducted in close coordination with local disaster management authorities and drew on household interviews, focus group discussions, and direct observation in both formal and informal settlements.</p> <p>Findings have been consolidated into internal situation reports to inform operational planning and external appeals. As of the 2nd of May 2025, assessment data has confirmed that over 5,000 households have been affected, with 1,000 households (5,000 individuals) in urgent need of humanitarian assistance. These numbers are expected to increase as assessments in remote and newly accessible areas continue. SARCS is also utilizing digital tools such as Kob Collect for data collection and is in the process of mapping vulnerable groups, including elderly-headed households, people with disabilities, and unaccompanied minors, to ensure targeted support.</p>
<p><b>Resource Mobilization</b></p>	<p>SARCS initiated comprehensive resource mobilization efforts, recognizing that pre-positioned stocks being depleted. The National Society and Province launched a Call for Support to various partners, requesting financial and in-kind support to replenish essential supplies. Coordination with the International Federation of Red Cross and Red Crescent Societies (IFRC) was immediately escalated. SARCS has also engaged with key local partners, including the private sector, government departments, and media platforms, to raise awareness and solicit donations. In addition, corporate partners have been approached to contribute non-food items such as hygiene kits, temporary shelter materials, and water containers. Internally, SARCS has reallocated operational funds and redeployed vehicles, equipment, and staff from other provinces to support frontline operations in the 3 provinces.</p>



# IFRC Network Actions Related To The Current Event

<b>Secretariat</b>	In this response, the IFRC, through its Pretoria Cluster Office, provides SARCS with technical support as part of its Secretariat responsibilities to the National Society. IFRC offers operational guidance to SARCS teams, such as PMER, Finance, DM, and Programs, with SARCS joining biweekly calls to exchange information with IFRC technical experts. These calls also function as a forum for making essential operational decisions and for providing action points.
<b>Participating National Societies</b>	There is no PNS supporting.

## ICRC Actions Related To The Current Event

The ICRC continually supports the NS on Restoring of Family Links (RFL) as well as the implementation of the Safer Access Framework for staff, volunteers and the affected communities to ensure that they are protected from further harm and enhanced vulnerabilities.

## Other Actors Actions Related To The Current Event

<b>Government has requested international assistance</b>	No
<b>National authorities</b>	<p>In response to the escalating disaster across Eastern Cape, Northern Cape, KwaZulu-Natal, and North West, national authorities have taken several critical actions to address immediate humanitarian needs and stabilize affected communities. The South African Weather Service (SAWS) issued early warnings for 30 April 2025, alerting these provinces to the high risk of disruptive rainfall, severe weather conditions, and rising water levels from the Vaal and Orange Rivers. This early alert prompted the activation of provincial and municipal disaster management structures—particularly in KwaZulu-Natal under the leadership of the Provincial Disaster Management Centre (PDMC)—and led to the pre-positioning of relief supplies, deployment of emergency response teams, and establishment of temporary shelters in high-risk areas.</p> <p>The Department of Human Settlements has played a lead role in providing temporary shelter solutions for displaced families, especially in hard-hit areas such as the eThekweni Metropolitan Municipality. Emergency accommodation has been established in schools and community halls, while efforts are ongoing to assess structural damage to homes and begin planning for housing recovery and reconstruction. Simultaneously, the Department of Social Development (DSD) has begun deploying social workers and psychosocial support teams and providing emergency food assistance to vulnerable households.</p> <p>At a broader level, coordination mechanisms have been activated between key government departments—including Health, Water and Sanitation, Education, and Cooperative Governance and Traditional Affairs (COGTA)—to support service continuity and ensure integrated response planning. Local municipalities, in coordination with national structures, are conducting joint damage assessments and mobilizing public works teams to clear debris, restore access roads, and stabilize critical infrastructure. These actions are being coordinated under the Provincial Disaster Management Centre (PDMC), which continues to monitor the evolving situation and facilitate cross-government support.</p>
<b>UN or other actors</b>	The South African Weather Service (SAWS) and Provincial Disaster Management Centres are consistently issuing weather updates and early warning messages, allowing government bodies and humanitarian groups like SARCS to strengthen communication efforts with communities, especially those in vulnerable areas.



### Are there major coordination mechanism in place?

Yes. Joint Operation Committees (JOCs), activated by the Disaster Management Centre (DMC) at national, provincial, district, and local municipal levels, coordinate disaster response, with SARCS actively participating at each level to reinforce its auxiliary role. The Department of Social Development (DSD) leads the coordination of relief efforts from both the government and other partners, ensuring streamlined assistance and preventing overlap. DSD provides essential psychosocial support (PSS) in affected areas and oversees contributions from various humanitarian organizations to maintain a well-coordinated, effective response for those impacted.

## Needs (Gaps) Identified



### Shelter Housing And Settlements

The extreme weather events from April to June 2025 have caused widespread destruction of homes and forced thousands into displacement across six provinces. The damage occurred in both rural and peri-urban areas, often where housing was substandard and lacked resilience to heavy rainfall and flooding.

Following the May floods, the shelter needs analysis was showing that 1000 households (5000 individuals) were severely affected leaving the evacuation centers or host affected community in critical need of humanitarian assistance. The shelter sector emerged as a major gap in the response, particularly in eThekweni, Umkhanyakude, Zululand, and King Cetshwayo districts, where many families have lost their homes or with others staying in structurally unsafe buildings. Over 180 of the evacuated individuals have been relocated to overcrowded temporary shelters such as schools and community halls, which lack privacy and adequate protection from the elements.

As of the latest assessments after the events of June, over 7,700 households (43,500 people) have had homes severely damaged or destroyed. By the time of the rapid assessment, at least 5300 households (26 500 people) remained displaced in KZN and Eastern Cape living in overcrowded and inadequate emergency shelters, including public buildings and host communities. KwaZulu-Natal and Eastern Cape are the most critically affected, with a combined 5300 HH damaged and 26 500 people displaced. Figures could be higher. Many of the newly affected areas in Eastern Cape and KwaZulu-Natal have not been included in previous or ongoing DREF operations, creating a significant gap in the current shelter response.

Additionally, with more than 107 schools destroyed/damaged—some of which are currently being used as temporary shelters. Other centers include such community halls. All these centers are not appropriate for long-term accommodation, prompting for shelter solution to be found for the families with most severe house damages. Especially with colder weather approaching. Even though these are meant to be temporary relocations at the moment, the center are overcrowded and unsuitable facilities. Access to shelter assistance remains limited in several remote rural areas due to damaged roads, poor infrastructure, and challenging terrain. hundred families do not have basic protection items to cope weather and harsh conditions. This is an important threat to their wellbeing.

There is also an urgent need to relocate affected families to appropriate shelter solutions so that education services can resume safely.



### Livelihoods And Basic Needs

Initially the impact of floods in April/May 2025 affected Northern Cape, Northwest and KZN, the floods and storm damage have severely impacted livelihoods, destroying critical income-generating assets such as small businesses, informal trading stalls, farming tools, and crops. In the Northern Cape, approximately 130 households have reported total or partial loss of farming tools, livestock, or stored produce, particularly in the rural parts of Ga-Segonyana and Frances Baard districts. In Northwest, an estimated 290 households across Ramotshere Moiloa and Ngaka Modiri Molema municipalities consist of informal workers and traders among the hardest hit. Roadside stalls and mobile vending equipment were swept away by floodwaters, and the loss of tools and inventory has left many families with no way to generate income. The remoteness of these areas and poor road conditions have slowed the delivery of aid, and disruptions to local markets have further compounded the situation. SARCS has distributed food parcels and basic items to about 120 households, but the scale of need far exceeds available resources. In KwaZulu-Natal, where informal economic activity is a key survival strategy for low-income communities, the economic toll has been particularly severe. More than 1,000 households in eThekweni, Zululand, and King Cetshwayo have reported destruction or severe damage to home-based businesses, market stalls, and agricultural plots. Informal traders especially women operating from township markets, have lost stock and tools, halting daily income generation.

Following the severe weather event that occurred on 10 June 2025, a significant number of households located along vulnerable areas such as riverbanks and wetlands were adversely affected. Many of these families experienced devastating losses of necessities essential for daily living. Items such as cooking equipment, hygiene and sanitary products, blankets, mattresses, and clothing were either damaged



beyond use or washed away entirely. The destruction of these vital items has left affected households in a state of heightened vulnerability, with many struggling to meet their immediate needs for warmth, cleanliness, nutrition, and overall well-being.



## Health

Access to healthcare services has been significantly disrupted across flood-affected districts, including John Taolo Gaetsewe (Northern Cape), Ngaka Modiri Molema and Ramotshere Moiloa (North West), and King Cetshwayo, Zululand, and Umkhanyakude (KwaZulu-Natal). In these areas, at least nine primary healthcare clinics have reported partial damage or are currently inaccessible due to flooding, leaving more than 16,000 people without regular access to essential health services. In some instances, access roads to clinics have been washed away, and mobile health services previously vital for rural communities have not been fully restored due to limited fleet availability and safety concerns. The breakdown of sanitation systems, combined with overcrowded shelters lacking adequate hygiene facilities, has created high-risk conditions for communicable disease outbreaks. Waterborne illnesses such as cholera, typhoid, and diarrheal diseases are of particular concern in KwaZulu-Natal, where recent assessments indicate that more than 400 individuals across 10 temporary shelters rely on shared sanitation facilities without regular water supply or proper waste disposal. Communities in Zululand and Umkhanyakude are especially vulnerable due to weak water infrastructure and limited public health surveillance.

Mental health and psychosocial support (MHPSS) needs are also increasing, especially among displaced families, children, and individuals who have experienced the loss of homes, livelihoods, or loved ones. Across the three provinces, it is estimated that over 2,500 individuals may require psychosocial first aid or ongoing support. However, current service coverage remains inadequate. The South African Red Cross Society (SARCS) has deployed a team of eight trained psychosocial support volunteers and four social workers to rotate across affected districts, but this response has proven insufficient to meet the scale of need. There is an urgent need to train and deploy at least 10 additional volunteers and staff per province to strengthen MHPSS outreach, facilitate group sessions in shelters and schools, and support referral systems to formal healthcare facilities.

Following the floods in the Eastern Cape and KwaZulu-Natal on 10 June 2025, several pressing public health risks have emerged. Floodwaters that swept through homes, vehicles, and public infrastructure continue to pose serious health hazards, particularly as debris remains in rivers and around damaged structures. Fallen power lines and submerged electrical systems further increase the risk of injury or electric shock.

Damage to water treatment and sewage facilities has heightened the risk of waterborne diseases such as diarrhea, cholera, typhoid, and other gastrointestinal infections. Stagnant water left behind by the floods has also created ideal breeding grounds for mosquitoes, raising concerns about the possible spread of malaria, dengue fever, and other vector-borne diseases.

Conditions in emergency shelters are also alarming. Overcrowding, poor sanitation, and limited access to clean water increase the risk of outbreaks of pneumonia, influenza, and skin infections. Many shelters lack clean water, adequate toilet facilities, and hygiene supplies, which exacerbates the spread of communicable diseases. Additionally, the absence of proper waste disposal systems increases environmental contamination and exposure to pathogens.

Health service delivery has been severely affected. The assessment revealed that over 20 health facilities in the Eastern Cape and many more in KwaZulu-Natal have been disrupted or destroyed, limiting access to emergency and routine care. Patients with chronic illnesses, including those reliant on long-term medication, are at heightened risk of complications due to the closure of some clinics. The Department of Health is currently planning to restore and extend health services to evacuation centers.

Beyond physical health concerns, the psychological impact of the disaster is significant. Many survivors face acute stress, anxiety, depression, or post-traumatic stress disorder (PTSD), particularly those who have lost loved ones, homes, or witnessed traumatic events. Mental health and psychosocial support (MHPSS) interventions are urgently needed to support recovery and resilience among affected populations.



## Water, Sanitation And Hygiene

The flooding events that occurred in April and May 2025 had a severe impact on KwaZulu-Natal, North West, and the Northern Cape provinces, causing widespread destruction to water infrastructure and significantly disrupting water supply systems. As a result, many communities were forced to rely on unsafe water sources such as rivers, stagnant pools, and unprotected wells, increasing the risk of waterborne diseases. In KwaZulu-Natal particularly in eThekweni and Zululand had over 500 displaced individuals and were currently residing in overcrowded shelters where public sanitation facilities are either inadequate, non-functional, or entirely absent. This has led to open defecation, compounding the public health risks. In the Northwest province, approximately 800 households are dependent on untreated water, while sanitation facilities in many shelters remain insufficient or non-operational, further elevating the risk of disease transmission. Similarly, in the Northern Cape, flooding disrupted water infrastructure, leaving about 733 households without access to treated water. Many evacuation centers in the province also lack functional toilets, resulting in open defecation and increased exposure to health hazards.

The floods that occurred on 10th June 2025 in the Eastern Cape caused widespread damage to critical WASH infrastructure, leaving many communities without access to safe water, adequate sanitation, and essential hygiene services. The impact was especially severe in low-



lying and informal settlements situated along riverbanks and wetlands. In OR Tambo especially in the Mthatha community, water systems, pipelines, and small-scale treatment facilities, were damaged or submerged. Thousands of households were cut off from their regular water supply, forcing them to rely on unsafe sources such as contaminated rivers and stagnant floodwater. Local authorities began water trucking operations, but logistical challenges and road damage limited consistent access to clean water.

Many household and school latrines were flooded or collapsed, and flush toilets became non-operational due to waterlogging and damage to sewage infrastructure. Flooded pit latrines and blocked sewer systems resulted in raw sewage mixing with surface water, leading to widespread contamination. In displacement centers, the lack of functional, gender-sensitive, and accessible sanitation facilities raised protection and health concerns, particularly for women and girls.

The absence of hygiene resources, coupled with overcrowded living conditions, heightened the risk of waterborne and hygiene-related diseases, including diarrhoea, cholera, and skin infections. Children, elderly, and people with disabilities faced increased vulnerability due to inadequate hygiene support and mobility barriers in sanitation access. Preliminary reports from the Department of Health indicate a heightened risk of gastrointestinal illness outbreaks, likely attributed to the consumption of contaminated water and inadequate hygiene and sanitation conditions in affected areas.

Initially the NS received approval to purchase 1000 water purification kits which was based on preliminary assessments conducted, however by the time the DREF funds were received the detailed assessments revealed that these kits were no longer needed as government through the Department of Health filled this gap. In this regard, the NS will reprioritize the budget initially allocated for that distribution A more flexible approach is prioritized, notably the MPC.



## Protection, Gender And Inclusion

The incident that occurred in April and May 2025 affected three provinces - Northern Cape, North West and KwaZulu Natal and resulted in the displacement of numerous families. At least 227 individuals were displaced in the Northern Cape, 300 in the North West and 180 in the KwaZulu Natal Province. These families were temporarily accommodated in community halls, schools, churches, and informal structures. Unfortunately, many of these shelters lack basic protection measures, accessibility features, and privacy—particularly impacting women, children, the elderly, and persons with disabilities. Reports highlight severe overcrowding, absence of partitions, inadequate lighting, and limited supervision. These conditions significantly increase the risk of sexual and gender-based violence (SGBV) and compromise the overall safety and dignity of vulnerable groups.

The incident that occurred on 10 June 2025 displaced approximately 3,675 individuals in the OR Tambo District of the Eastern Cape, along with 906 families in KwaZulu-Natal. In response, eight evacuation centers were established across the districts to accommodate families who lost their homes and livelihoods as a result of the disaster. However, conditions in these centers are a significant cause for concern. Due to limited space, men, women, children and people living with disabilities are housed in proximity, compromising both privacy and safety particularly for women, children and people living with disability. In addition, access to clean water remains a major challenge, as the flooding has severely damaged local infrastructure.



## Education

During the floods that occurred in April/May 2025, the flood's impact highlighted a significant gap in disaster preparedness and the understanding of early warning systems for both communities and local schools. Many schools were unable to properly prepare, or respond to the flood, which has resulted in educational setbacks for students. In some areas, there is a lack of knowledge about how to prepare for extreme weather events, and educational materials on disaster risk reduction (DRR) are limited. In North West, particularly in the Ngaka Modiri Molema and Ramotshere Mosiloa municipalities, the lack of early warning systems and preparedness measures has left many communities unprotected from the floods. Schools in these areas were unprepared for such extreme weather events, and the lack of flood-risk education has left many vulnerable populations without a clear understanding of how to prepare or respond to future disaster. In Northern Cape, the province's vulnerability to disasters, especially floods, has underscored the need for better disaster risk reduction (DRR) education. The flood also exposed the lack of early warning information for communities, especially in more remote areas, leaving people unprepared for the severity of the floods. SARCS has been providing DRR materials and raising awareness through community health sessions in the most affected districts, like Ga-Segonyana.

As of 10 June 2025, a total of 135 schools have been damaged across the severely affected provinces, which are Eastern Cape and KwaZulu-Natal provinces. Of these, 67 schools are in the Eastern Cape and 68 in KwaZulu-Natal, representing the most severely affected areas. The destruction of these schools has had a devastating impact on the education system, with thousands of learners losing their lives including the school bus that was swept away killing approximately 09 pupils, essential school resources, including textbooks,



uniforms, stationery, and other educational equipment.

This loss has not only disrupted daily learning activities but has also significantly hindered the delivery of the curriculum. Many learners have been left without a safe and stable learning environment, and educators are struggling to resume teaching under these challenging conditions. The damage has set back academic progress and poses a serious threat to the educational development of the affected children. Urgent intervention is required to restore learning infrastructure, provide psychosocial support, and ensure that students can return to school as quickly and safely as possible.



## **Risk Reduction, Climate Adaptation And Recovery**

Recurring floods across KwaZulu-Natal, Northwest, and Northern Cape continue to endanger lives, displace communities, and strain infrastructure. The increasing frequency and severity of these events highlight growing vulnerabilities driven by rapid urbanization, inadequate infrastructure, and climate change. In the North West, communities in Ngaka Modiri Molema and Ramotshere Moiloa municipalities face similar gaps. Early warning systems are inadequate or absent, and community preparedness remains reactive rather than proactive. - In the Northern Cape, particularly in Ga-Segonyana and Pixley Ka Seme, the absence of risk assessments, hazard mapping, and early warning systems has left communities highly exposed. Recovery efforts are hampered by underinvestment in climate-adaptive infrastructure, and DRR education remains limited in scale.

Across all 7 affected provinces including the newly affected ones, Eastern Cape, KZN, Free State and Western Cape, there is an urgent need to scale up DRR interventions, integrate climate risk management into local development plans, and strengthen early warning systems. SARCS, in collaboration with government and partners, must work to embed long-term climate adaptation and preparedness strategies to reduce future humanitarian impact and support sustainable community resilience. As 10 June 2025, assessments indicate that most households affected especially in OR Tambo district, are constructed along the Mthatha Dam. This highlights the need to enhance DRR strategies by developing community knowledge and awareness on disasters that are susceptible to the environment and how a community better prepare for potential disasters in an effort to build resilience to future disaster impacts. The recurrence of multi-sectoral impact following floods events has highlighted the importance of strengthening coordination of Disaster management with key government stakeholders. There is a clear need to leverage partnerships to align immediate humanitarian actions with long-term disaster risk reduction (DRR) strategies.

### **Any identified gaps/limitations in the assessment**

SARCS is actively striving to meet the urgent needs of affected communities; however, the scale and severity of the recent floods continues to pose significant operational challenges. Widespread power outages across all impacted provinces have disrupted communication networks, making coordination between teams and volunteers extremely difficult due to the loss of internet and electricity access. Logistical capacity also remains limited.

Material shortages are further compounding the crisis many families are facing acute food insecurity after losing their supplies to storm damage, yet current resources are insufficient to meet the scale of immediate need. Access to some of the hardest-hit areas remains a major obstacle, as damaged and impassable roads prevent SARCS from deploying aid or personnel where volunteers are not already present.

Priority for the intended top-up application will be given to Eastern Cape, Kwa-Zulu Natal and Free State. KZN was initially affected during the floods of May. 561 HHs (2,805 people) were affected in Zulu land, King Cetyayo, uMkhanyakude, eThekweni localities. With the current floods, the following areas are reported affected: uMgungundlovu (728 households affected); Harry Gwala (682 households affected); Ugu (866 households affected); uMzinyathi (716 households affected); Uthukela (700 households affected); King Cetshwayo (409 households affected). This shows several newly affected municipalities that need to be prioritized.

## **Operational Strategy**

### **Overall objective of the operation**

This IFRC-DREF operation aims to support 2,200 households (11,000 people) accessing immediate assistance, service and materials that will contribute to the life-saving response efforts, contribute restoring their wellbeing and dignity or prevent major humanitarian risk following the impact of floods and storms that occurred from 30 April to 11 June in Northwest, Northern Cape, Eastern Cape, Kwa-Zulu Natal.



## Operation strategy rationale

With the declaration, SARCS is scaling-up the response to meet urgent needs already identified for the newly affected communities. This top-up from the IFRC-DREF will allow immediate response aligning with needs already identified and NS mandate in such disaster scale while assessment is being completed to inform a more comprehensive scale-up.

The proposed response is designed to alleviate the immediate effects of the disaster while enhancing the well-being of the affected populations, contributing to restore their dignity, stability and wellbeing while they cope with situation. The strategy priority remains the urgent life saving actions and distributions. Key humanitarian priorities targeted include Shelter, Health, WASH, CVA, PGI, risk reduction strengthen using a Building Back Better approach and community engagement strategies to build awareness.

### Cash Voucher Assistance:

The initial approved application targeted 1000 HH with CVA. In the expansion of this DREF operation, SARCS aims to provide multipurpose cash assistance to a total of 2,200 households affected by the floods and severe weather conditions that occurred on 9-11 June 2025. NS will be providing them with ZAR 2500. The value and approach is designed to help affected individuals and families meet a variety of critical needs, ranging from purchasing essential materials, food or educational stationery for children that have been damaged or losses with the floods. Based on previous operations learnings, this allocation also allows some individuals accessing chronic medication and other essential goods and services. By adopting a multipurpose cash modality, SARCS promotes dignity, autonomy, and choice among recipients, empowering them to prioritize their most urgent needs based on their unique circumstances. This flexible approach not only enhances the relevance and effectiveness of the assistance but also contributes to restoring a sense of control and resilience for those navigating the aftermath of a disaster.

Initially the NS received approval to purchase 1000 water purification kits which was based on preliminary assessments conducted, however by the time the DREF funds were received the detailed assessments revealed that these kits were no longer needed as other government partners covered this. In this regard, the NS is requesting to reallocate the funds for the water purification kits to cover 400 households under CVA. If this is approved, the total number for CVA beneficiaries will be 2200 households (receiving ZAR 2500).

Refresher training on Cash and Voucher Assistance (CVA) will be conducted for both volunteers and staff in Eastern Cape for 30 volunteers and 10 Volunteers in KZN to strengthen capacity and ensure consistency in delivery. Following verification, volunteers will be deployed to support and monitor the cash transfer process to the identified beneficiaries over 5 days. To assess the effectiveness and impact of the intervention, SARCS will also conduct Post-Distribution Monitoring (PDM), engaging 70 volunteers in the respective targeted provinces volunteers for 3 days.

### Shelter:

While the Department of Human Settlements holds the legal mandate to provide long-term shelter solutions, the South African Red Cross Society (SARCS) plays a crucial role in addressing the immediate needs of affected families, ensuring access to basic materials necessary for survival and dignity during the emergency and recovery phases. SARCS will maintain the 1,000 blankets already approved for the operation. The NS is banking on the support from other partners to provide the shelter needs for the additional approved provinces.

### Livelihoods:

Initially, this operation aimed to provide hot meals to 5,000 individuals at evacuation centers in the Northern Cape, Northwest, and KwaZulu-Natal (KZN). It is important to note that SARCS is currently providing two hot meals per day for a period of one month. With the initial approval, two mobile kitchens were procured for the Northern Cape and Northwest to ensure the continuous delivery of fresh hot meals. Due to the limited funds no additional meals will be provided to the additional affected provinces.

### WASH:

The initial approval was targeting 2000 individuals (400 HH) with WASH interventions in the NC, NW and KZN provinces. For WASH, SARCS is planning to procure and distribute hygiene supplies, while also prioritizing the procurement of a mobile toilet in an evacuation Centres in KZN, NC and NW. Awareness campaigns on hygiene practices are being urgently implemented to reduce the risk of disease outbreaks. Given the ongoing health crises, especially with diarrheal diseases, these WASH interventions aim to mitigate public health risks and improve sanitation conditions. SARCS will implement targeted activities to improve access to safe water, sanitation, and hygiene in affected communities. This will include the procurement and distribution of 1000 hygiene kits to the identified vulnerable households. Health and hygiene sensitization sessions will be conducted to promote safe practices and reduce the risk of waterborne diseases. To address immediate sanitation needs, mobile toilets will be provided at evacuation centers. In addition, 70 volunteers (including a total of 30 in EC, 20 KZN, 10 in NW, 10 in NC) are in the process of receiving refresher training on health and hygiene promotion, eCBHFA and ECV to enhance their ability to support community outreach and behavior change efforts.

Initially the NS received approval to purchase 1000 water purification kits which was based on preliminary assessments conducted, however by the time the DREF funds were received the detailed assessments revealed that these kits were no longer needed as other government partners covered this. In this regard, the NS is requesting to reallocate the funds for the water purification kits to cover 400



households under CVA. If this is approved, the total number for CVA beneficiaries will be 2200 households (receiving ZAR 2500)

**Health:**  
SARCS will prioritize First aid support, mental health and psychosocial support (PSS) for individuals affected by the disaster through the provision of PFA and other MPHSS services including the identification and referral of people in distress, led by four trained social workers over a period of 20 days per month for two months. An additional session for PSS has been added for Eastern Cape. In addition to the volunteers that are going to be trained under this sector, 30 Volunteers in Eastern Cape, and 10volunteers in Kwa-Zulu Natal will be trained to ensure sustained support and promote responder well-being, regular psychosocial services. Furthermore, engagement sessions will be conducted with Response Teams in all three targeted provinces, with two sessions planned per province. Activities will be focused on the most vulnerable groups such as the pregnant, lactating mothers and elderly. Due to localised flooding, the likely prevalence of waterborne diseases, communities must be equipped with knowledge to address growing health threats, capacity building utilising ECV and eCBHFA in these flood environments will also be prioritized focusing on vector control & environmental health. These interventions aim to strengthen emotional resilience and ensure timely support for both affected individuals and frontline responders.

**Protection of Gender and Inclusion:**  
In line with its commitment to protecting vulnerable populations, SARCS continues to prioritize the inclusion of marginalized groups, such as women, children, people with disabilities, and the elderly, in all aspects of its response. The capacity of volunteers and staff will be enhanced through targeted training on Protection, Gender, and Inclusion (PGI). In each province, SARCS will provide 1 PGI briefing on Minimum Standards for PGI in emergencies to staff and volunteers in response teams for 1 day.

Initially 30 volunteers were prioritized to be given trained for PGI in KZN, NW, NC. In addition, 40 more volunteers (10 in KZN, 30 in EC). In total the NS is 70 will be targeted for PGI refresher training.

**Community Engagement and Accountability:**  
An additional 40 more volunteers are activated to support the operation and will be sensitized on CEA, bringing the number of total volunteers to 70. The CEA approach will be employed to ensure active and meaningful engagement with affected communities, ensuring that their voices are heard, and their needs are prioritized throughout the operation. SARCS will re-train 40 volunteers in the newly affected provinces (30 in Eastern Cape, and 10 in Kwa-Zulu Natal) on CEA to strengthen its ability to respond effectively and inclusively to the needs of those affected in KZN, NW, EC, and NC. SARCS will ensure that affected communities are informed, consulted, and actively involved throughout the response. An additional orientation session for KZN, EC, NW and NC will be conducted for volunteers and staff to strengthen their understanding of CEA principles and practices. Regular communication channels will be established in each province to facilitate two-way dialogue, including community meetings, information sessions, and social media updates. In addition, each province will have dialogue platform that will be created to leverage local knowledge and promote inclusive decision-making. To support accountability and learning, 70 volunteers will be engaged to collect community feedback on the flood response over a 3-day period, ensuring that community voices inform ongoing and future activities.

## Targeting Strategy

### Who will be targeted through this operation?

Within this revised strategy, SARCS aims to reach 2200 households (11000 people) in the 4 provinces which are Northwest, Northern Cape, Eastern Cape, Kwa-Zulu Natal (including the newly affected areas under KZN which is Harry Gwala, uGu, uThukela, and King Cetshwayo.

The revised target includes households initially prioritized following the May floods, as well as those newly affected by the events of 9–11 June 2025. The operation initially aimed to assist 1,000 households (5,000 people) in Northern Cape, North West, and KwaZulu-Natal—specifically in the Umkhanyakude, Zululand, and King Cetshwayo districts. In response to the additional impact of the June floods, the proposed top-up seeks to support a further 1,200 households (6,000 people), including 800 households in Eastern Cape and 400 households in KwaZulu-Natal.

The scale-up of the assistance in KZN is motivated by newly affected areas. Indeed, KwaZulu Natal province was affected by May weather events and again affected on 11 June 2025. This is why the requested top up is intending to cover the areas newly affected. Making additional priority municipalities targeted in KZN. E.g: Harry Gwala, uGu, uThukela, and King Cetshwayo.

The targeting strategy prioritizes the most vulnerable groups, including child-headed households, pregnant and lactating mothers, the elderly, and persons living with disabilities. In the selection of the beneficiaries, priority will be given to vulnerable families whose homes were completely destroyed, leaving them without basic household essentials. As part of this intervention, each household will receive two blankets and two mattresses to support immediate comfort and protection against the elements, along with one kitchen set to help re-establish essential cooking and food preparation capabilities. This support is designed to restore a sense of normalcy and dignity to families who have lost the core elements of their homes and daily living due to the disaster.



SARCS aims to reach 2200 households (11000 people) in the 4 provinces which are Eastern Cape, Kwa-Zulu Natal, Northwest and Northern Cape with awareness campaigns to safe hygiene behaviors, CEA, Sexual and Gender-Based Violence (SGBV), PSEA, and Child Safeguarding within affected communities.

## Explain the selection criteria for the targeted population

The selection process will prioritize individuals and households that have suffered significant impacts from the disaster, including the loss of homes, livelihoods, or access to essential services. This targeted approach aims to ensure that those most critically affected receive timely and appropriate support to address their immediate needs. Special consideration will also be given to vulnerable and socially marginalized groups, such as pregnant women, the elderly, persons with disabilities, and child-headed households, recognizing their increased risk and unique challenges during emergencies. By focusing on these groups, the response aims to uphold their safety, dignity, and specific needs throughout the intervention. The selection criteria have been designed to be inclusive, fair, and culturally sensitive, ensuring equitable access to assistance while reinforcing the protection and rights of all affected individuals, particularly those who are most at risk.

## Total Targeted Population

Women	4,620	Rural	80%
Girls (under 18)	2,420	Urban	20%
Men	2,200	People with disabilities (estimated)	3%
Boys (under 18)	1,760		
Total targeted population	11,000		

## Risk and Security Considerations (including "management")

Does your National Society have anti-fraud and corruption policy?	Yes
Does your National Society have prevention of sexual exploitation and abuse policy?	Yes
Does your National Society have child protection/child safeguarding policy?	Yes
Does your National Society have whistleblower protection policy?	Yes
Does your National Society have anti-sexual harassment policy?	Yes

Please analyse and indicate potential risks for this operation, its root causes and mitigation actions.

Risk	Mitigation action
Damaged roads, compromised bridges, and the challenging rural terrain in KwaZulu-Natal continue to limit access to remote communities that are among the hardest-hit.	Establish alternative transportation routes in collaboration with provincial disaster management structures and explore options for aerial or boat transport to ensure timely delivery of life-saving assistance and prepositioned supplies. Work with municipal authorities and the Department of Transport to prioritize road clearance and infrastructure repair to facilitate safe access for humanitarian teams.



<p>Limited resources, including funding, relief stock, and personnel, are severely restricting the scale and pace of response efforts across affected districts in KZN.</p>	<p>Increase resource mobilization through targeted donor engagement and appeals for both financial and in-kind contributions. Strengthen partnerships with humanitarian agencies and the private sector to pool capacity and extend outreach. Coordinate with non-affected provinces for surge support and maximize available resources by prioritizing high-impact interventions that address urgent needs.</p>
<p>Widespread infrastructure damage and intermittent power outages have disrupted communication channels, posing a major challenge to timely information flow and coordination.</p>	<p>Train response teams in alternative communication protocols, including radio and offline systems, to maintain operational continuity in the field. – Actively involve community leaders and local volunteers in information dissemination, rumour tracking, and feedback collection to ensure accurate two-way communication with affected populations.</p>
<p>In the current KwaZulu-Natal (KZN) response, SARCS is placing renewed emphasis on protection, access, and coordination—areas shaped by both past experiences and the acute realities on the ground. Women, children, and other vulnerable groups continue to face heightened risks, including gender-based violence and child protection concerns, particularly in the wake of displacement and shelter instability. Previous operations in KZN saw SARCS response teams intimidated and forced to temporarily withdraw from certain communities due to civil unrest and localized tensions</p>	<p>In this operation, SARCS is working to establish safe spaces and strengthen community protection networks while running awareness campaigns focused on the prevention of sexual and gender-based violence (SGBV). Specialized services, including referral pathways and survivor-centred psychosocial support, are being prioritized to support individuals who may have experienced violence or exploitation.</p>
<p>Women, children, and other vulnerable groups may face heightened protection risks, including gender-based violence and exploitation, especially in overcrowded evacuation centers and unstable shelter conditions.</p>	<p>Establish child-friendly spaces with trained staff to support children with disabilities and other children such as those who are out of school. Ensure feedback is collected and acted on to support children in the response. Utilize the child safeguarding policy, risk analysis, plan and toolkit to better ensure safeguarding of children who are being reached to directly and indirectly. The NS developed an Action Plan, utilize it. Ensure safe referral pathways for GBV and child protection cases are mapped and known to staff</p>

**Please indicate any security and safety concerns for this operation:**

In the current KwaZulu-Natal (KZN) response, SARCS is placing renewed emphasis on protection, access, and coordination, areas shaped by both past experiences and the acute realities on the ground. Women, children, and other vulnerable groups continue to face heightened risks, including gender-based violence and child protection concerns, particularly in the wake of displacement and shelter instability. In past operations, SARCS response teams faced intimidation and were forced to temporarily withdraw from certain communities due to civil unrest and local tensions. These challenges were compounded by underlying ethnic tensions, particularly resistance from some local communities toward individuals and responders perceived as outsiders. This dynamic has at times posed serious risks to SARCS personnel who are not originally from the area, hindering their ability to safely access and assist affected populations.

These experiences have underscored the urgent need for protective measures that ensure both community safety and the security of humanitarian responders. In response, SARCS is working closely with trusted local leaders, community-based organizations, and traditional authorities to rebuild trust, promote social cohesion, and create an enabling environment for inclusive humanitarian action. The National Society is also strengthening its approach to community protection by establishing safe spaces, supporting local protection networks, and running awareness campaigns focused on the prevention of sexual and gender-based violence (SGBV). Referral mechanisms for survivor support services, including psychosocial care, have been activated to assist those who have experienced violence, exploitation, or trauma.

<p>Has the child safeguarding risk analysis assessment been completed?</p>	<p>Yes</p>
----------------------------------------------------------------------------	------------



# Planned Intervention



## Shelter Housing And Settlements

**Budget:** CHF 47,634

**Targeted Persons:** 11,000

**Targeted Male:** 1,023

**Targeted Female:** 1,302

### Indicators

Title	Target	Actual
# of households reached with blanket distribution	1,000	0
# detailed assessment conducted	3	3
# of households reached with mattresses distribution	1,000	0
# of people reached through raise awareness on safe shelter on building	11,000	2,325

### Progress Towards Outcome

SARCS conducted 3 Detailed Need assessments (1 assessment per province) for needs and vulnerabilities, of damages of affected households across all 3 provinces. SARCS was also able to conduct 3 community awareness on building back better in 3 communities across the affected provinces were each province target communities which were more prone to disasters to raise awareness 2,325 people (1,302 females and 1,023 Males). No additional activities have been requested for the top-up.

Activities pending include the following:

- The National Society is finalizing the procurement of blankets and mattresses, targeting to complete the process by 27 June 2025. Distribution of mattresses, blankets to 1,000 Households will be completed early July.



## Livelihoods And Basic Needs

**Budget:** CHF 10,693

**Targeted Persons:** 6,000

**Targeted Male:** 2,475

**Targeted Female:** 4,401

### Indicators

Title	Target	Actual
#of people supported with hot meals	6,875	6,875
# of mobile kitchens to be procured	2	2

### Progress Towards Outcome

SARCS is in the process of securing 3 stocks (1 stock per province) for Provision of hot meals to the displaced people for month across 3 provinces which managed to reach 6,875 people.

In addition, managed to secure 3 mobile kitchens for 3 provinces Kwa Zulu Natal, Northern Cape and Northwest which were impacted by



floods, each receiving 2 mobile kitchens. 2 supported under this DREF.  
No activities have been requested under this sector for the top-up request for newly affected districts.



## Multi Purpose Cash

**Budget:** CHF 277,349  
**Targeted Persons:** 2,200  
**Targeted Male:** 180  
**Targeted Female:** 320

### Indicators

Title	Target	Actual
# of staff and volunteers provided with CVA refreshers training session	70	60
#households verified and successfully receive cash vouchers after being identified and processed for support.	2,200	500
% of target beneficiaries expressing satisfaction after cash distribution	90	0

### Progress Towards Outcome

Initially, the application targeted 1,000 beneficiaries, with beneficiary verifications still underway. The top-up will target 1,200 households. SARCS is currently conducting the following activities:

1. Registration and verification of beneficiaries in all the targeted provinces, including the Eastern Cape.
2. In the preparation of CVA distributions, the National Society has engaged FSPs.
3. SARCS successfully conducted 3 sessions on CVA refresher training targeting 70 volunteers who are involved in this response to support and monitor the cash intervention process and the distribution of non-food items.



## Health

**Budget:** CHF 15,457  
**Targeted Persons:** 4,000  
**Targeted Male:** 986  
**Targeted Female:** 1,014

### Indicators

Title	Target	Actual
# of Identified people in distress.	4,000	2,000
# of people reached through coordination of PFA, PSS and PFL	4,000	2,000
# of people reached with referral of distress	4,000	2,000

### Progress Towards Outcome

SARCS deployed 30 volunteers across all provinces to provide multisector assistance that include provision of mental health support to floods affected people. Furthermore, NS through Mental Health and Psychosocial Support Service (MHPSS) and provision of psychosocial first aid reached 2000 people (1014 Females and 986 Males). NS under Health and care service collaborated with government departments



like Department of Social Development (DSD) and department of health to ensure a clear referral pathway for Mental health and psychosocial support interventions that requires advanced counselling and further intervention. Follow-up sessions were conducted to ensure affected people recover from the trauma caused by the thunderstorms. A total of 2,000 people were referred for further services.

A session has been added for PSS for the newly affected districts in KZN and EC under the requested top-up.



## Water, Sanitation And Hygiene

**Budget:** CHF 21,095

**Targeted Persons:** 11,000

**Targeted Male:** 1,207

**Targeted Female:** 1,353

### Indicators

Title	Target	Actual
# of refresher training on WASH in Emergencies for volunteers and staff	30	30
# of people reached through awareness/sensitization sessions to communities	11,000	2,560
# of household hygiene packs distributed	1,000	0
# of water purification kits procured and distributed	0	0

### Progress Towards Outcome

With support from IFRC 30 volunteers went through a Hygiene and Health refresher training ahead of the 4 Hygiene and Health sensitization sessions that were conducted where SARCS was able to reach 2,560 people (1,353 females and 1,207 Males). Water, sanitation, and hygiene promotion services were ensured, including the distribution of essential hygiene-related materials such as hygiene kits. SARCS is in the process of finalising hygiene kits procurement for distribution to a total of 3000 households, catering for the needs of women, children, pregnant women, lactating women, the elderly, and people with disability. The hygiene packs consisted of sanitary pads, bleach, a toothbrush set, bath soap, body lotions, washing powder, roll on and towels.

No activity have been added under the top-up for EC and KZN (newly affected districts) Provinces



## Protection, Gender And Inclusion

**Budget:** CHF 778

**Targeted Persons:** 11,000

**Targeted Male:** 288

**Targeted Female:** 812

### Indicators

Title	Target	Actual
#of people reached with PGI interventions	11,000	800
#staff and volunteers briefed to implement PGI minimum standards in emergencies	70	30



# of children reached through child-friendly spaces with trained staff to support children with disabilities and other children such as those who are out of school	2,438	1,000
# of children reached through safeguarding policy, risk analysis, plan and toolkit to better ensure safeguarding of children	2,438	1,000
# of people reached with safe referral pathways for GBV and child protection cases are mapped and known to staff.	1,500	800

## Progress Towards Outcome

- The NS has managed to sensitize 30 volunteers
- The NS has also reached 1,000 children through child-friendly spaces with trained staff to support children with disabilities and other children, such as those who are out of school
- The NS has reached 1,000 children reached through safeguarding policy, risk analysis, plan and toolkit to better ensure safeguarding of children.
- The NS has also reached 800 people with safe referral pathways for GBV and child protection cases are mapped and known to staff.



## Community Engagement And Accountability

**Budget:** CHF 2,503

**Targeted Persons:** 11,000

**Targeted Male:** 1,801

**Targeted Female:** 3,200

## Indicators

Title	Target	Actual
# of refresher training on CEA	70	70
#of people reached directly through collection of community feedback	11,000	5,000
# of volunteers to collect community feedback on floods response for 3 days	70	30
# of key stakeholders, including supported communities, actively participate in information-sharing forums and decision-making processes related to building community resilience and reducing vulnerability.	20	20

## Progress Towards Outcome

- Volunteers and staff have been actively engaged in ongoing processes to collect community feedback through multiple channels, such as suggestion boxes, household visits, and community meetings reaching approximately 5,000 people. These continuous efforts are enhancing the quality and relevance of the feedback gathered, contributing to more responsive programming.
- The active engagement of all stakeholders including community members, local leaders, and program staff remains a key ongoing process. Through the CEA orientation refresher sessions, emphasis has been placed on maintaining inclusive, transparent, and two-way communication. This has led to growing trust and a stronger sense of ownership among community members.
- The orientation refresher continues to support ongoing efforts to foster the exchange of relevant information between communities



and the organization. These continuous engagements are gradually contributing to the development of more resilient and less vulnerable communities, with community members increasingly participating in decision-making and preparedness activities.



## Secretariat Services

**Budget:** CHF 40,235

**Targeted Persons:** 1

**Targeted Male:** -

**Targeted Female:** -

### Indicators

Title	Target	Actual
# of monitoring visits conducted by IFRC	3	0
# of surge personnel deployed	1	1

### Progress Towards Outcome

The IFRC head of delegation and the NS staff visited the affected provinces to supervise the implementation of DREF activities in response to the flood's response. Monitoring and updates about the response are carried out via online team meetings biweekly. Furthermore, the Cluster Snr DM Officer collaborates closely with the entire team, both from NS and Cluster, to ensure operation and implementation synchronization.

The surge operation manager is in country, extended from the MDRZA020. Finance surge alert is ongoing. In the absence of profiles, alternative approach through IFRC finance unit support is also explored.

The Cluster and NS PMER collaborate closely in building the operation's monitoring and reporting tools. With the assistance of the Cluster Snr Finance Officer, the NS Finance team has all the technical support required to guarantee that financial systems for the operation were properly set up and implemented.

The delegation will continue to ensure close monitoring, quality and compliance oversight on this operation taking advantage of their presence in country and the surge Operation manager. The following actions are in place.

- IFRC field monitoring visits with operations, logistics, communications finance and PMER.
- Support the technical aspect of the intervention where required by the NS
- Ensure accountability and compliance to the applicable quality in the implementation, the processes and requirement of the activated emergency tool.
- Facilitate the PMER training and peer support
- Support the effective organization of lesson learnt
- With the Regional Anticipatory Action Coordinator now based in Country, support on the progress for the Early action protocol development.



## National Society Strengthening

**Budget:** CHF 73,662

**Targeted Persons:** 74

**Targeted Male:** -

**Targeted Female:** -

### Indicators

Title	Target	Actual
-------	--------	--------



# of field visits conducted by HQ	4	1
# of lessons learnt workshops conducted	4	0
# volunteers insured	70	30

## Progress Towards Outcome

Progress as of Mid-June:

The North-West, Northern Cape and KZN Provinces have been conducting monitoring visits for field supervision, technical support and coordination in the affected areas. A total of 30 NS volunteers and staff were deployed to support the intervention. To strengthen coordination and partnerships in the response, the NS has coordinated and facilitated a total of 4 meetings hosted by the Red Cross Red Crescent Movement and other relevant external entities, including the government and private sectors. The IFRC Pretoria Cluster office has facilitated and coordinated biweekly coordination meetings for information exchange and updates on the thunderstorm's response progress.

There is a structure in Place for Assistance Delivery and Monitoring. While 65% of this DREF allocation is dedicated to direct relief assistance, a robust support system is in place to ensure rapid and effective delivery, involving 70 volunteers and additional staff. This DREF covers the following cost:

- Technical and operational blended Structure in place to ensure quality implementation over the six-month period. This DREF mobilize and support a Disaster Management Officer, Finance Officer, and PMER Officer to support operational requirements, monitoring, and reporting.
- Two-Tier Monitoring Approach:
  - (i) Headquarters Level: Technical supervision through monthly monitoring missions, remote follow-up meetings, and regular exchanges.
  - (ii) Branch Level: Weekly supervision led by branch staff, supported by logistics and human resources mobilized under this operation.
- Volunteer Duty of Care is ensured with at least Volunteers insurance, provision of protective and visibility equipment, and engaged in ongoing capacity-building initiatives.
- Lessons learned workshops will be conducted at the provincial level to inform future responses.
- Capacity Strengthening will be continuous, ensuring all opportunity are used for peer learning and reinforce systems. Especially on operational and financial monitoring and reporting.
- (i) Financial and Operational Strengthening: The NS will continue to receive peer-to-peer technical support from the IFRC Secretariat across various domains. Under this DREF operation, a PMER (Planning, Monitoring, Evaluation, and Reporting) training will be conducted to build staff and volunteer capacity in designing, implementing, and managing operations in alignment with the revised DREF procedures.
- (iii) Particular focus is placed on reinforcing NS response capacity in Northern Cape and North West provinces, where operational resources are stretched.
- Coordination and Humanitarian Diplomacy: The operation will also support coordination with humanitarian stakeholders, facilitate engagement through meetings and platforms, and enhance public communication and profiling through field support and media outreach.

## About Support Services

### How many staff and volunteers will be involved in this operation. Briefly describe their role.

This operation will engage a total of 70 volunteers across the provinces as they have already been activated by Provincial Response Teams. These volunteers will be crucial in providing direct support to affected communities, conducting assessments, distributing relief items, assisting with shelter and as well as Health & WASH initiatives, and supporting community engagement efforts. At the National Office, 7 staff members will coordinate the overall operation, offering vital support in program management, health & WASH, IT, finance, supply chain & procurement, logistics, communications, and National Society Development (NSD). This team will play a key role in guiding and managing the operational response, ensuring that resources are effectively utilized and that communication remains clear and responsive throughout the operation.

### Does your volunteer team reflect the gender, age, and cultural diversity of the people you're helping? What gaps exist in your volunteer team's gender, age,



## or cultural diversity, and how are you addressing them to ensure inclusive and appropriate support?

The South African Red Cross Society (SARCS) strives to ensure that its volunteer team reflects the gender, age, and cultural diversity of the communities it serves. Currently, there is strong representation from youth (ages 18–30) and older adults; however, there remains a gap in the number of female volunteers, particularly in areas where SARCS supports single female-headed households. In some branches, women make up less than 30% of the volunteer base, which can impact the delivery of gender-sensitive support.

In terms of cultural and linguistic representation, while many SARCS volunteers speak widely used local languages, some minority groups—such as [insert specific local ethnic or language group if known]—are underrepresented. This affects the organization's ability to communicate effectively with all segments of the community and to build trust with certain groups.

To address these gaps:

SARCS has initiated targeted recruitment efforts focused on engaging women and individuals from underrepresented cultural and language groups through local networks, faith-based organizations, and community outreach events.

Flexible volunteer roles are being introduced to support the participation of women who have caregiving or household responsibilities.

New volunteers from diverse backgrounds are paired with experienced mentors to improve retention and promote inclusion.

Gender and cultural sensitivity training has been embedded in volunteer orientation and refresher sessions to enhance awareness and respectful engagement.

## Will surge personnel be deployed? Please provide the role profile needed.

A surge personnel to assist the NS with overall coordination for the operations will be deployed for 3 months.

## If there is procurement, will it be done by National Society or IFRC?

Procurement for the first part of this operation is being completed and delivery ongoing at the moment of this update. SARCS is leading and coordinating the local procurement of items and CVA process. IFRC delegation ensuring compliance and accountability systems are kept and strengthened. To ensure fast-track of the procurement processes and delivery of assistance, NS is making use of the database of suppliers managed by the Procurement Committee who are always engaged to provide services and supply relief stock in emergency response within 48 hours of engagement as they are aware that SARCS is involved in providing immediate response during emergencies. This will ensure timely response during the operation of relief items which include blankets, mattresses, hygiene packs and visibility materials that are needed for this response.

## How will this operation be monitored?

The monitoring of this operation will be overseen by the IFRC through its Cluster Office in Pretoria, working in close coordination with the National Society and supported by the IFRC Regional Office. The IFRC will collaborate with key stakeholders to coordinate monitoring efforts and provide technical support, particularly in areas such as logistics. Monitoring will focus on ensuring compliance with minimum humanitarian standards, upholding the fundamental principles of the Movement, and promoting efficient delivery of supplies and services to affected communities. The operation will also be monitored for the proper management of relief items in storage, as well as to ensure reporting is accurate, complete, and timely.

The planned PMER training will ensure that beyond the HQ, NS branches understand the full project cycle, including setting clear objectives, establishing monitoring systems, conducting evaluations, and producing quality reports that match the context and capacity of the NS. The training will promote accountability, learning, and evidence-based decision-making, Result based management aligned with organizational goals and community needs.

## Please briefly explain the National Societies communication strategy for this operation

The communication strategy for this operation emphasizes the use of social media platforms, traditional media (radio and TV), and regular website updates as essential tools for real-time information sharing, community outreach, and resource mobilization. These platforms will play a critical role in engaging the public, delivering timely situational updates, and garnering support for ongoing relief efforts. Oversight of these activities will be led by the Communications, Marketing, and Resource Mobilization Task Team, which will



support both the emergency response and the National Society's broader operational communications.

To further strengthen this effort, the National Society has recently appointed a new Through the Task Team, a dedicated National Communications and Marketing Officer, who will guide the strategic direction of all communication initiatives and ensure alignment with humanitarian messaging standards.

The IFRC will provide key support in implementing this strategy, working closely with the National Communications Officer to enhance digital engagement, particularly through platforms like Facebook, Twitter, TikTok, YouTube and Instagram. This includes developing impactful content, sharing regular updates on relief operations, and responding to community feedback in a timely and transparent manner as well as providing on-field communications support to the staff and volunteers wherever necessary.

In addition, IFRC will assist with maintaining and upgrading the National Society's website to ensure it remains a reliable source of up-to-date information, including situational reports, impact stories, and calls for public support. The site will feature a user-friendly interface to make critical information easily accessible to affected communities, donors, and partners.



# Budget Overview



## DREF OPERATION

### MDRCCxxx - The South African Red Cross Society South Africa April Floods 2025 - KZN, NC, NW

#### Operating Budget

<b>Planned Operations</b>	<b>375,024</b>
Shelter and Basic Household Items	47,148
Livelihoods	10,693
Multi-purpose Cash	277,349
Health	15,457
Water, Sanitation & Hygiene	21,095
Protection, Gender and Inclusion	778
Education	0
Migration	0
Risk Reduction, Climate Adaptation and Recovery	0
Community Engagement and Accountability	2,503
Environmental Sustainability	0
<b>Enabling Approaches</b>	<b>122,178</b>
Coordination and Partnerships	0
Secretariat Services	48,516
National Society Strengthening	73,662
<b>TOTAL BUDGET</b>	<b>497,202</b>

*all amounts in Swiss Francs (CHF)*



# Contact Information

For further information, specifically related to this operation please contact:

**National Society contact:** Dimpho Teffo, National Disaster Management Officer, [dteffo@redcross.org.za](mailto:dteffo@redcross.org.za), 0810279575

**IFRC Appeal Manager:** Kopano Masilo, Head of Cluster Delegation, Pretoria, [kopano.masilo@ifrc.org](mailto:kopano.masilo@ifrc.org)

**IFRC Project Manager:** Bongeka Mpinke, Senior Disaster Management Officer, [bongeka.mpinke@ifrc.org](mailto:bongeka.mpinke@ifrc.org)

**IFRC focal point for the emergency:** Bongeka Mpinke, Senior Disaster Management Officer, [bongeka.mpinke@ifrc.org.za](mailto:bongeka.mpinke@ifrc.org.za)

**Media Contact:** Susan Nzisa Mbalu, Communications Manager, [susan.mbalu@ifrc.org](mailto:susan.mbalu@ifrc.org), +254733827654

**National Societies' Integrity Focal Point:** Dimpho Teffo, National Disaster Management Officer, [dteffo@redcross.org.za](mailto:dteffo@redcross.org.za)

[Click here for the reference](#)

