



Households affected by tropical cyclones received cash from the Malawi Red Cross Society, supported by the IFRC Secretariat, to meet their emergency needs and rebuild their shelters in Blantyre district, Malawi, in March 2025. **Photo credit: Malawi Red Cross Society**

<p>Emergency appeal №: MDRS1005 Emergency appeal launched: 18/12/2024 Operational Strategy published: 26/03/2025</p>	<p>Glide №: TC-2024-000224-MOZ TC-2024-000224-MDG TC-2024-000225-COM</p>
<p>Operation update #1 Date of issue: 27/04/2025</p>	<p>Timeframe covered by this update: From 16/12/2024 to 20/03/2025</p>
<p>Operation timeframe: 12 months (6/12/2024 to 31/12/2025)</p>	<p>Number of people being assisted: 600,000</p>
<p>Funding requirements: CHF 6 million through the IFRC Secretariat Funding ask, and as part of the CHF 10 million Federation-wide funding ask</p>	<p>DREF amount initially allocated: Mozambique: CHF 1 million Madagascar: CHF 500,000 Malawi: CHF 500,000 Comoros: CHF 500,000 Regional: CHF 250,000</p>

As of 17 March 2025, this Emergency Appeal, which seeks CHF 6 million, is 6 per cent funded. Further funding contributions are needed to enable the National Societies in the region, with the support of the IFRC, to continue with the preparedness efforts of and provide humanitarian assistance and protection to people on the move.

A. SITUATION ANALYSIS

Description of the crisis

Tropical cyclones (TC) and Storms: From early December 2024 to 15 March 2025, five tropical cyclones/Storms impacted in the Southwestern Indian Ocean (SWIO) region: TC Chido, Dikeledi, Honde, Garance, and Jude, which affected 2.6 million people in Comoros, Madagascar, Malawi, Mozambique, Mayotte and La Reunion. Refer to Table 1 for the number of people affected by tropical cyclones in each country or island, and Chart 1 for total impact.

Country	Chido	Dikeledi	Garance	Honde	Jude	Total per Country
Comoros	64,167	-	-	-	-	64,167
Madagascar	-	6,926	-	99,890	15,000	121,816
Malawi	46,017	-	10'000	-	20,646	76,663
Mozambique	455,513	249,787	-	-	1,020,791	1,726,091
Mayotte	300,000	-	-	-	-	300,000
La Reunion	-	-	265'500	-	-	265,500
Total per Cyclone	865,697	256,713	275,500	99,890	1,056,437	2,554,237

Tropical Cyclone Chido also affected Mauritius, Seychelles, and Zimbabwe, but to a lesser degree.

TC Chido was the first cyclone to have a significant and destructive impact in the region. It intensified into an intense tropical cyclone on 11 December 2024, achieving category 4-equivalent status with sustained winds of 220 km/h, gusts of up to 250 km/h, and an extreme central pressure of 929 hPa. As of 30 December 2024, TC Chido resulted in at least 172 confirmed deaths – 120 in Mozambique, 39 in Mayotte, and 13 in Malawi – and over 6,300 reported injuries¹

Subsequently, TC Dikeledi made landfall in northern Madagascar on 11 January 2025, affecting more than 7,000 people. The storm brought heavy rainfall to the northern regions of the country, resulting in damage to 1,000 houses². Following its passage through Madagascar, Dikeledi struck Mozambique on 13 January 2025, affecting areas that had already been impacted by Cyclone Chido in December 2024. The cyclone primarily hit the coastal province of Nampula. As of 20 January 2025, preliminary data indicate that 31,898 houses have sustained partial damage, while 24,101 houses have been destroyed, resulting in 55,999 damaged shelters across the province³.

In late February 2025, two additional tropical storms, Moderate Tropical Storm Honde and Severe Tropical Storm Garance, developed in the Indian Ocean, increasing in strength to tropical cyclones. Intense rain and wind from Tropical Cyclone Honde struck southern Madagascar on 28 February 2025, causing widespread flooding. On the same day, TC Garance made landfall on La Réunion, knocking out electricity and water for most of the island's residents.

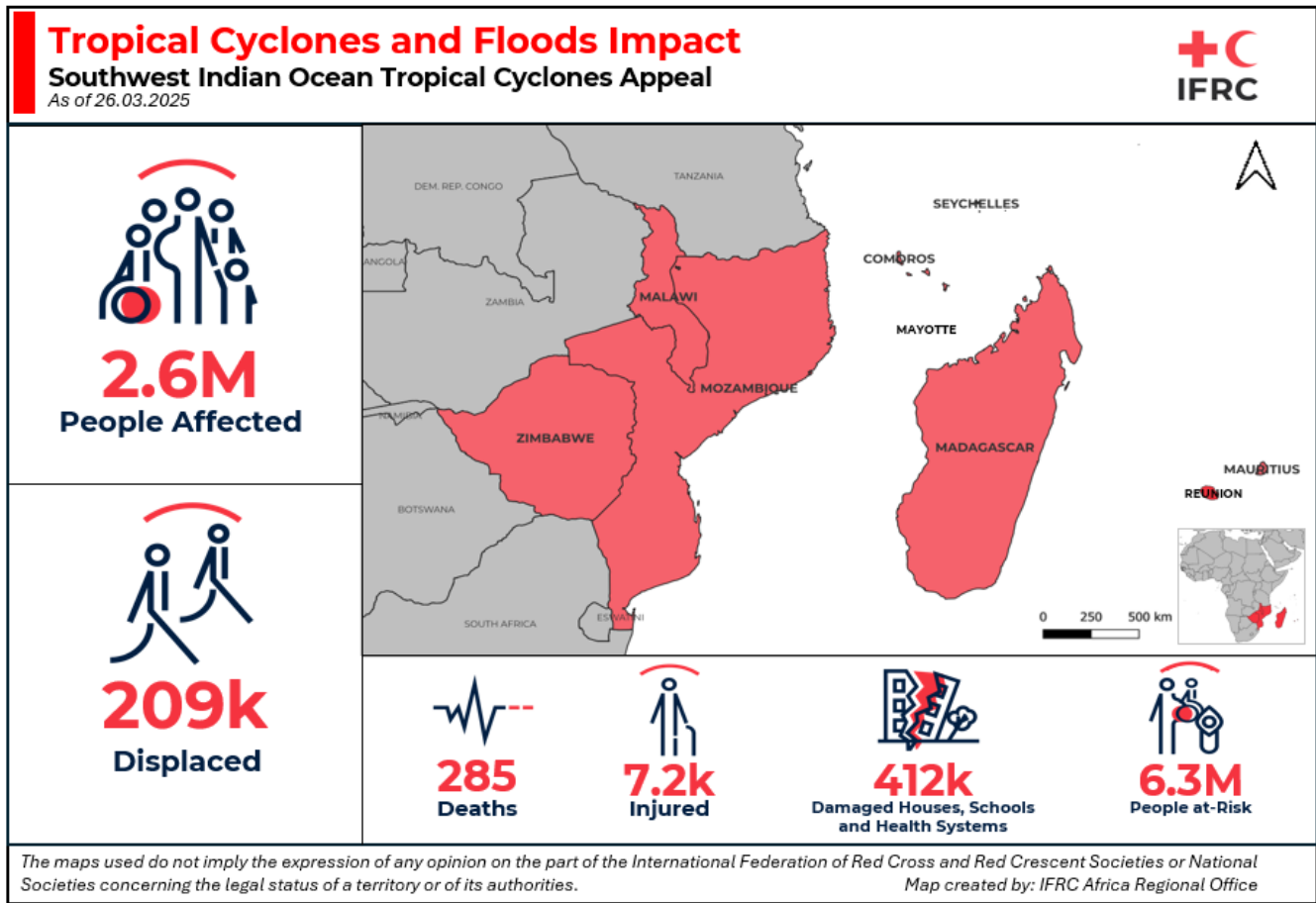
Furthermore, a system emerged in the morning on 8 March 2024 over the Mozambique Channel, southwest of Nosy Be, after quickly crossing Madagascar. It evolved into a moderate tropical storm and was subsequently named Jude. TC Jude made landfall in the Mossuril district of Nampula province, Mozambique, in the early hours of Monday, 10 March 2025. With sustained winds reaching 140 km/h and gusts peaking at 195 km/h, the cyclone unleashed torrential rainfall exceeding 250 mm in a single day, accompanied by powerful winds that caused widespread devastation and flooding across the provinces of Nampula, Zambezia, Cabo Delgado, and Sofala. TC Jude entered Malawi on 10 March 2025, affecting 11 districts mainly in the Southern and Central regions of the country, with Phalombe district being

¹ Mozambique: Intense Tropical Cyclone Chido - Flash Update No. 6, OCHA, As of 30 December 2024; Cyclone Chido has devastated Mayotte and Mozambique, 24 December 2024, <https://www.hi.org/en/news/cyclone-chido-has-devastated-mayotte-and-mozambique->; Malawi country plan

² Madagascar: Tropical Cyclone Dikeledi - Flash Update No. 3, OCHA, 15 January 2025

³ DTM Tropical Cyclone Dikeledi, Nampula, Mozambique, Flash Update: 21 January 2025, IOM and INGO

the most impacted. According to DoDMA's report on 13 March, TC Jude affected 20,646 people, with 4,883 displaced in Malawi.



Floods: The flooding situation in Southeast Africa, particularly in Madagascar, Malawi and Mozambique, was severe due to heavy rainfall and the impacts of tropical cyclones in February and March 2025.

- More than 2,800 people from 780 households displaced due to the floods in Antananarivo in Madagascar in February 2025⁴.
- More than 40,100 households (approximately 180,800 people) were affected by flooding and intense rains across Malawi. Floods particularly affected Southern and Central districts, with more than 1,100 households displaced in Mangochi District in late January, and 440 households displaced in Chikwawa District in late February. A total of 39 people lost their lives and 469 were injured. Further rains were expected to continue through March and into April.
- Likewise, heavy rains were recorded in various locations in northern, central, and southern Mozambique since the end of the third week of February 2025. As a result, river levels continued to rise, leading to flooding in several areas of Namacurra and Maganja da Costa. The Mozambique Red Cross Society activated Early Action Protocol (EAP) for Floods on 21 February 2025, based on forecasts of severe flooding in the Licungo and Limpopo river basins.

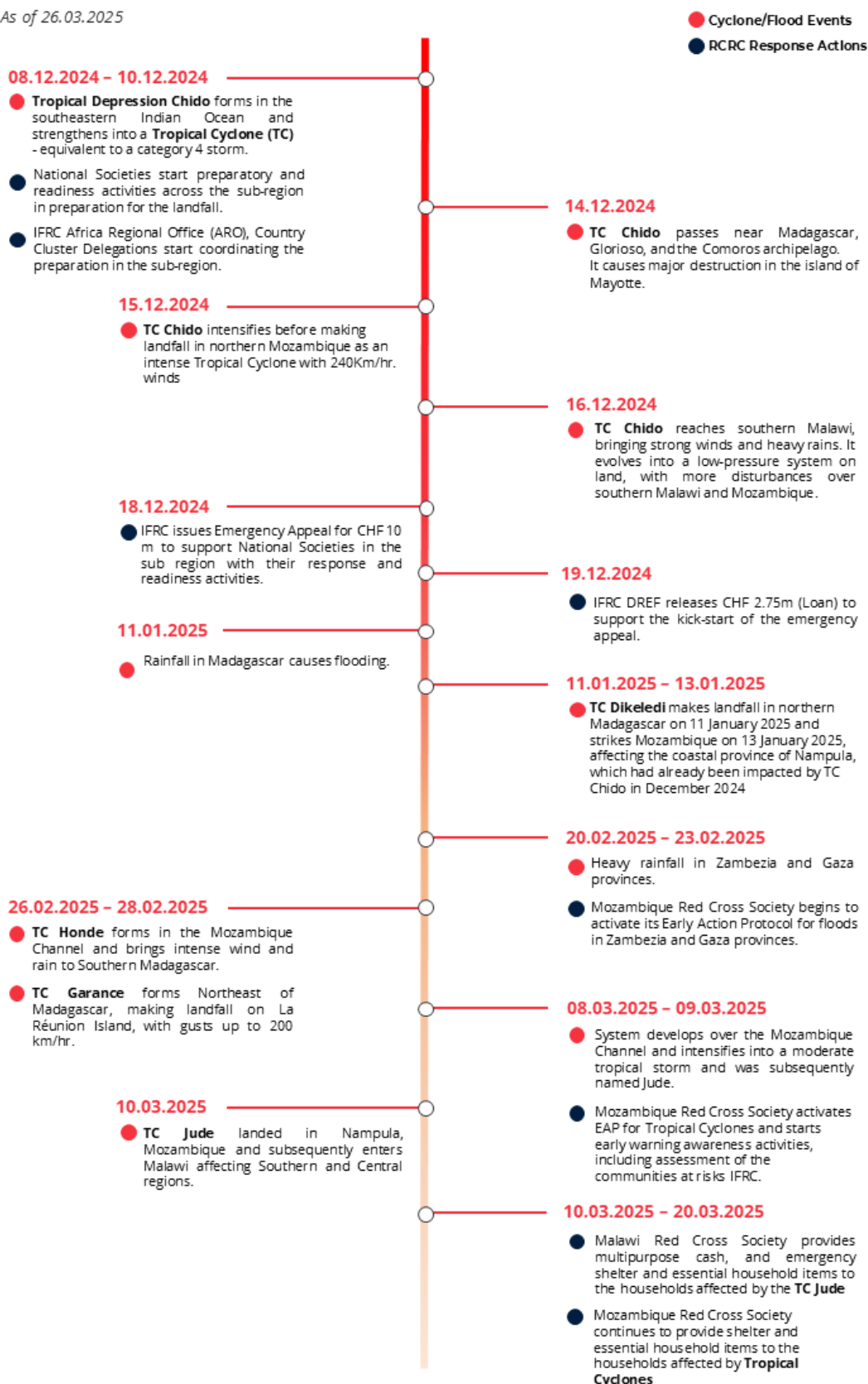
⁴ DCC Africa-1 Disaster Preparedness and Response - Bulletin Flash n°2_FORTEPLUIE_17 Février 2025 - 17h30.pdf - All Documents

Timeline of Events and Response Activities

Southwest Indian Ocean Tropical Cyclones Appeal



As of 26.03.2025



The maps used do not imply the expression of any opinion on the part of the International Federation of Red Cross and Red Crescent Societies or National Societies concerning the legal status of a territory or of its authorities.
Map created by: IFRC Africa Regional Office

These consecutive storms placed immense strain on response capacities, with many communities still grappling with the devastation left by the cyclones. The compounded impact hindered response efforts leaving thousands in prolonged displacement and exacerbated pre-existing vulnerabilities such as food insecurity and health issues including ongoing cholera outbreaks. Electricity and telecommunications infrastructure were severely disrupted, isolating several communities in Madagascar and Mozambique.

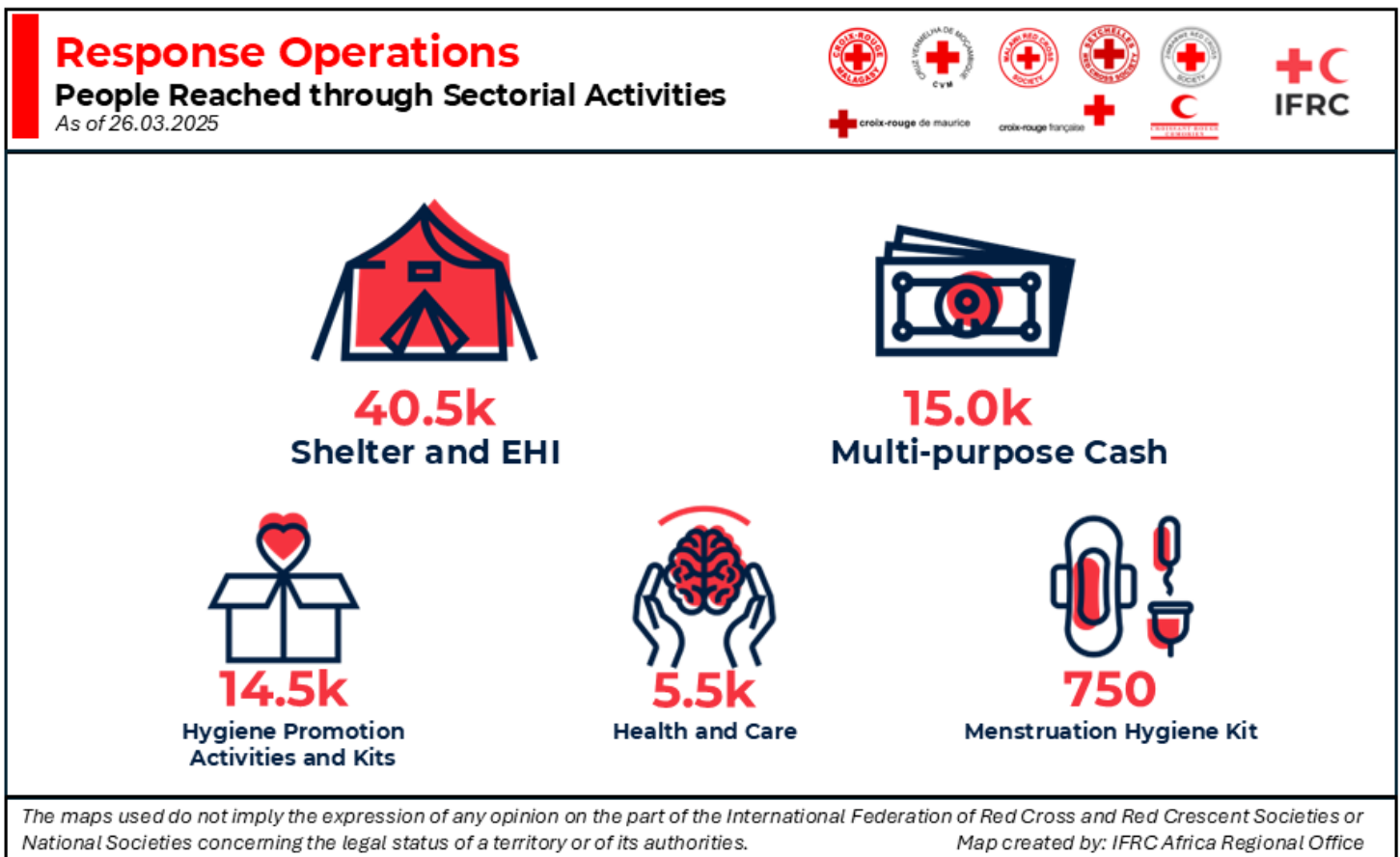
Flooding continues to pose a severe risk in the countries, affecting access to clean water, shelter, and essential services. The communities need shelter, water, sanitation, and hygiene (WASH), food security, and healthcare.

Summary of response

Overview of the host National Societies' and ongoing response

The National Societies in the SWIO region have extensive experience in managing natural hazards and public health crises. Their work centers on disaster preparedness, immediate response, and long-term recovery. Red Cross Red Crescent volunteers, integrated within communities, are trained in disaster preparedness and early warning systems (EWS). The National Societies operate warehouses with pre-positioned supplies. They have strong acceptance within affected communities and among national authorities, facilitating response and readiness efforts.

The National Societies play a vital role in mitigating the impact of cyclones through comprehensive preparedness, rapid response, and sustained recovery, saving lives and enhancing community resilience. Refer to [SWIO TC Operation Strategy \(MDRS1005\)](#), page #8-9 for National Societies' capacity.



During the reporting period, with the support from IFRC network, the National Societies reached out to more than **45,000 people** in Madagascar, Madagascar, Malawi and Mozambique with at least one intervention, including shelter and essential household items (EHI), multipurpose cash assistance (MPCA), hygiene promotion and mental health and psychosocial support (MH PSS). Refer to Chart 2 for the Federation-wide people reached per sector and strategic sectors of intervention for the details.

In addition, more than **900,000 people** were reached through dissemination of EWS messages using various media such as mass awareness messaging using loudspeakers, household visits and early action activities in Madagascar, Malawi and Mozambique.

Country-wise progress

Comoros

- The Comoros Red Crescent mobilised disaster response teams to disseminate EWS awareness activities at the risk communities during Tropical Cyclones Chido and Dikeledi.
- The Comoros Red Crescent developed its country plan in response to the tropical cyclones. The National Society is planning to provide MPCA to 75 households (450 individuals) directly impacted by TC Chido in December 2024. The National Society is also planning to reach a further 61,615 with awareness in 36 communities throughout the archipelago that have been assessed as high risk for future cyclone impacts. The National Society will strengthen its teams in shelter, WASH and Cash distribution training.

Madagascar

- Malagasy Red Cross Society has been, since the beginning of the season, active in readiness/anticipation activities but also in response activities through two coordinated sources of funding as part of the Federation-wide approach of the EA. The National Society's approach is to use the Locally-led Multi-Hazard Preparedness and Resilience Programme funded by FCDO through IFRC, mainly in the areas in the east where this programme is being implemented. For the other areas, particularly in the south, the Malagasy Red Cross is utilizing Emergency Appeal funds.
- In response to TC Dikeledi, the Malagasy Red Cross Society activated its crisis modifier under the Madagascar Locally-led Multi Hazard Preparedness and Resilience Program funded by FCDO through IFRC (as mentioned above) and rapidly deployed National Disaster Response Teams (NDRT/BDRT) alongside local governance structures to lead early warning and anticipatory actions. Between 6 and 31 January 2025, Malagasy Red Cross carried out key messaging across 16 districts in six regions (including Sava, Diana, Boeny, Menabe, Ambatosoa, and Atsimo Andrefana), reaching 93,755 people with early warning messages. Anticipatory measures such as canal cleaning and house reinforcement were implemented, and 105 households (559 individuals) were evacuated to four temporary shelter sites. A total of 499 volunteers supported the sensitization activities, while 17 supported shelter management.
- In response to the impact of TC Honde, the Malagasy Red Cross Society implemented anticipatory actions and emergency response activities in the regions of Atsimo Andrefana and Menabe with support from the Emergency Appeal as well. From 26 to 28 February 2025, Malagasy Red Cross Society conducted early warning sensitization campaigns in six fokontany of Toliara I and II, mobilising 119 Local Response Teams and four volunteers to raise awareness using visual alert codes (green, yellow, red) and community outreach tools such as megaphones and tam-tams. These efforts focused on cyclone preparedness and encouraging evacuations from risky to safe areas. Simultaneously, in Morondava (Menabe region), 53 volunteers responded to massive floods caused by the cyclone by managing ten emergency shelters, evacuating affected populations, and distributing essential food and hygiene kits. A total of 1,409 households (7,045 people) were assisted.

- In response to TC Jude, the Malagasy Red Cross Society, with support from the FCDO funded programme carried out coordinated awareness-raising, evacuation, and shelter management activities in the regions of Atsimo Andrefana and Menabe from 14 to 16 March 2025. In Toliara I and II (Atsimo Andrefana), MRCS mobilized 105 volunteers to deliver early warning messages across 45 fokontany, leading to the evacuation and registration of 2,374 displaced households across 10 temporary shelter sites. Concurrently in Morondava (Menabe), 21 volunteers and staff facilitated the evacuation of 336 individuals from flood-prone areas to safe shelters and sensitized more than 1,400 people on cyclone preparedness. Additionally, 87 households received three-day emergency food kits, including rice, oil, and hygiene supplies. Malagasy Red Cross is also coordinating with the Disaster and Risk Management National Office (Bureau National de Gestion de Risques et de Catastrophes - BNGRC) to see how to cover the needs left by TC Jude, identified in other areas, especially in the Southern part of the country.

Malawi

Malawi Red Cross Society (MRCS) accomplished the following activities:

- Deployed National Response Teams (NRT) to support initial emergency needs assessments together with DoDMA and district authorities.
- Completed detailed assessment for the response and readiness activities in Central and Southern regions
- Conducted entry meetings with communities, district-level authorities and stakeholders, which will be followed by general orientation and training of specialized volunteers to carry out shelter, MHPSS and health promotion activities, including sensitization on PGI and CEA.
- Provided shelter and essential household items to 972 households to meet the immediate needs of families⁵ still suffering from the impacts of TC Chido, while also providing multipurpose cash assistance and cash for shelter rebuilding to 1,671 households in Balaka, Blantyre, Kasungu, and Zomba, with the support of the IFRC Secretariat EA funding.
- Additionally, the National Society provided a one-time multipurpose cash assistance to 1,675 households in the Blantyre and Phalombe districts with the bilateral support of Danish Red Cross (DRC).

Table 2: Number of households receiving shelter and essential household

Particular	IFRC Secretariat EA	Bilateral Support	Total	Number of people reached	Remarks
Shelter and essential household items	972	-	972	4,300	Each household received each of tarpaulin, kitchen set, solar lamp, blanket, and mattress
Cash for shelter rebuilding	1,671		1,671	7,500	Each household received Malawi Kwacha (MWK) 100,000, equivalent to CHF 51*)
MPCA	1,671	1,664	3,335	15,000	Each household received MWK 80,000, equivalent to CHF 41*) and MWK 70,000 (equivalent to CHF 36*) with the support of IFRC Secretariat and DRC respectively.
<i>*CHF 1 equals to MWK 1,955.04, OANDA converter, 15 March 2025</i>					

⁵ Family(ies) and household(s) have been used interchangeably in the report.

- MRCS reached out approximately 715,000 people with early warning messages in at-risk districts in the days prior to landfall of TC Chido and Jude. Out this, 600,000 people were reached in anticipation of TC Chido through DRC support, and 115,000 people were reached in anticipation of TC Jude, through combined IFRC Secretariat support and Federation-wide support from DRC. The Emergency Appeal funding also facilitated the fast deployment of MRCS NRTs to support early actions, assessments and search and rescue activities.

Mozambique

- Mozambique Red Cross Society (CVM) provided 3,727 households in Nampula and Niassa with shelter toolkits, tarpaulins, kitchen sets, hygiene kits, menstrual hygiene kits, plastic buckets, jerry cans, mosquito nets, and solar lamps, with the support of the IFRC network. This also includes 2,000 households assisted through activation of EAP for tropical cyclones supported by IFRC Secretariat and German RC. For the initial response, the Canadian Red Cross (CRC) contributed relief items and IFRC procured items from PIROI pre-positioned stocks with Airbus pro-bono flight support to those affected by Cyclone Chido and Dikeledi
- Additionally, 968 households in Cabo Delgado province received shelter toolkits with the support of the ICRC. Details of the items have been provided in the relevant sections of the report.
- As co-lead of the Shelter Cluster, IFRC is coordinating with local authorities and partners to develop immediate response actions, map available resources, and ensure timely information sharing to address the shelter needs of affected communities.

I never imagined that one day I would lose everything I had. The cyclone came so fast and with such force that there was nothing I could do to stop it. My house, the crops, my memories... everything disappeared in minutes. My children and I survived, but how were we going to start again with nothing?

The Red Cross arrived, and I did not really know what to expect, but when I saw the volunteers in their uniforms, their friendliness and the help they brought, something inside me calmed down. They offered me water and treated one of my children.

I received materials to repair my house, and although everything is not as it was before, we are beginning to heal. The Red Cross has not only brought goods, but also consolation and emotional support, something I never imagined I would need.

-Celestino Armando, 42 years, Nampula, Mozambique

Needs analysis

The Tropical Cyclones significantly affected Comoros, Madagascar, Malawi, and Mozambique with more than 2.5 million people affected and 200,000 people displaced. Likewise, TC Chido and Garance impacted the islands of Mayotte and La Reunion, including French Red Cross (FRC-PIROI) warehouses, which normally provide critical response capacity for the region. The cyclones devastated property and infrastructure, leaving people without homes and destroying livelihoods. In the aftermath of such climate emergencies, effective management of housing, land, and property rights is vital to ensure that affected populations can secure their homes and restore their livelihoods.

The assessments conducted by the National Societies in Comoros, Madagascar, Malawi, and Mozambique, identified needs that can be classified as follows:

- **Immediate needs:** Food assistance, cash assistance to meet emergency needs, emergency shelter, essential household items such as kitchen sets, lighting system/equipment, emergency health, mental health and psychosocial support including psychosocial first aid, restoring family links, emergency WASH support, including hygiene kit, menstrual hygiene kits, and addressing protection needs of women at risk, girls and boys.

- **Intermediate needs:** Support in transitional shelter and restoring livelihoods, provision of clean water and sanitation, and primary health and care as well as rehabilitation and/or equipment support to health facilities.
- **Long-term needs:** Durable shelter, health and WASH facilities and awareness activities, restoring livelihoods and income generating initiatives, disaster risk reduction and climate change adaptation and readiness activities.



*Before the landfall of Tropical Cyclone Jude, the Mozambique Red Cross Society distributed early warning messages, conducted rapid assessments of at-risk communities, and registered households for relief efforts in Nampula, Mozambique. **Photo credit:** Keite Branquinho, Mozambique Red Cross Society*

Needs per sector

- **Shelter, housing, and settlements:** Consecutive cyclones and flooding events have affected Comoros, Madagascar, Malawi, and Mozambique, affecting over 2.1 million individuals from December 2024 to March 2025. As a result, more than 208,000 people have been displaced, and 402,200 homes have been destroyed or damaged. Refer to Table 4 for the cumulative impact of tropical cyclones and resulting floods by country.

Table 4: Cumulative impact of tropical cyclones and resulting floods by country				
Name of country	Number of people affected	Number of houses or destroyed damaged	Number of people displaced	Remarks
Comoros	64,160	218	171	
Madagascar	125,500	33,000	35,000	
Malawi	247,460	2,028	5,110	
Mozambique	1,726,000	369,000	900,000	
Total	2,163,120	404,246	940,281	
<i>Note: This is cumulative impact data of consecutive Tropical Cyclones: Chido, Dikeledi, Honde, Garance and Jude and resulting floods. Source of data for each cyclone has been provided concerned section</i>				

More than 23,000 people are still living in the accommodation centers in Mozambique⁶ and 1,000 people in Madagascar.

Families whose homes have been destroyed or damaged require emergency shelter support and essential household items, including tarpaulins, shelter toolkits, sleeping mats, and kitchen sets for those whose belongings have been buried or flooded. The need for shelter recovery programmes has been emphasized in the detailed needs assessment conducted by the National Societies in Malawi and Mozambique.

As of 31 March 2025, over 6,300 households (32,000 individuals) in Malawi and Mozambique have received shelter and essential items, such as shelter toolkits, tarpaulins, kitchen sets, blankets, mattresses, and cash to assist in rebuilding their homes. However, needs remain high, particularly in rural areas and among communities with fragile housing. Many homes are constructed from sand and bamboo, rendering them unsafe and vulnerable. In the long term, these communities require durable shelters that can withstand storms.

Needs analysis in the following sectors is primarily focused on Mozambique. More data on other countries will be shared in subsequent updates.

- **Food security and livelihood:** Households in the affected areas have lost food stocks and agricultural land; some have lost livestock, and traders have lost stocks that they would have sold to earn an income. People who were already in debt will struggle to repay due to a reduced means of income.

A common element raised while engaging in immediate and future needs by affected families was the impact of the destruction of crops and food stocks, possibly impacting the decision-making process on returning to places of origin or leaving transit centers.

Households reliant on agriculture need support for replanting, while families depending on livestock or fishing require help to replace lost animals and equipment. The flood analysis also showed that 62,684 hectares of cropland were destroyed by the inundation, resulting in significant production losses, severely impacting livelihoods and food security in Mozambique⁷. The Food Security and Livelihoods (FSL) cluster has estimated that 532,000 are in need of food support, with 157,300 falling into the High Risk or Very High Risk categories⁸. Therefore, it is crucial to support the restoration of livelihoods through in-kind assistance or cash and voucher assistance (CVA).

⁶ Dashboard_Impacto_INDG_Externo, By Cenoe Moçambique, 17 March 2025

⁷ OCHA Mozambique – Tropical Cyclone Jude Flash Update No. 5, 19 March 2025

⁸ [HDCC Africa-1 Disaster Preparedness and Response - 20250312_PPT_FSC_Final - Ad-hoc Jude.pdf - All Documents](#) p. 24

The cyclones left 200,000 people without electricity and destroyed crops and businesses in the affected areas, especially in Nampula, where agriculture is a key livelihood. The fishing sector was the most affected due to the loss of boats and fishing materials. Food security has emerged as the most critical immediate need.

- **Health and care:** In addition to displacement concerns, health risks are rising. The health needs in affected countries are extensive and require a coordinated response from governments and humanitarian organizations. The tropical cyclones have damaged or destroyed health facilities in the affected countries particularly in Mozambique. The Nampula Provincial Health Directorate (DPS) reported significant disruption in the provision of health services as 81 health units were affected, and medical supply shortages limited the availability of emergency response and routine care.

There are urgent health needs due to the lack of sufficient medical care in accommodation sites. The absence of proper facilities, poor hygiene, and heavy rains increase the risk of spreading diseases like malaria and cholera. A humanitarian gap has also been detected in the provision of psychosocial support.

Furthermore, the provinces of Nampula and Zambézia in Mozambique are currently experiencing a cholera outbreak across seven districts (Angoche, Larde, Mogovolas, Murrupula, Nampula City, Mopeia, and Alto Molocué), with a case fatality rate of 2.4 per cent. As of 7 April 2025, a total of 2,792 cases and 50 deaths (40 in the community and 10 in health facilities) have been reported in Nampula (88.7 per cent) and Zambézia (11.3 per cent). There is a high demand for medical supplies and health and hygiene promotion activities. The Mozambique Red Cross Society is planning to activate the crisis modifier, supported by the Belgian Red Cross, for the cholera response in Nampula. The activities planned under the crisis modifier align with the Emergency Appeal and enhance currently underfunded WASH/health initiatives, including community mobilisation, volunteer training in health, and further distributions of water purifying agents.

Conflict, mass displacement, disasters from natural hazards, and climate change have intensified outbreaks, particularly in rural and cyclone-affected areas, where poor infrastructure and limited healthcare access delay treatment. These cross-border factors have made cholera outbreaks increasingly complex and harder to control.

Mental health and psychosocial support needs of people affected by the tropical cyclones are significant due to the extensive destruction and trauma caused by the cyclones. Many individuals have experienced loss of family members, homes, and livelihoods, leading to increased levels of trauma and grief. Psychological first aid and counselling services are urgently needed to help individuals cope with their losses, particularly for vulnerable populations such as children and the elderly who may be more affected by the trauma of displacement and loss. As of 10 March 2025, with the support of Danish Red Cross, Malawi Red Cross Society reached more than 2,800 people with MHPSS activities in Phalombe district. Such supports need to be continued and scaled up in all affected areas.

- **Water sanitation and hygiene:** Access to clean water and sanitation services has been interrupted due to the cyclones. The lack of latrines and hygiene items increases the risk of waterborne diseases, especially in Nampula (Mozambique), where there are active cholera outbreaks. The cyclones have resulted in significant flooding, which has contaminated existing water sources and damaged or destroyed sanitation facilities in the affected countries.

A rapid initial multi-sectoral assessment (MIRA) led by INGD in Nampula province, Mozambique, from 14 to 17 March 2025, revealed that protected water supply systems - such as boreholes with functioning hand pumps and household connections to community water supply systems - declined following the cyclone. Meanwhile, the use of rainwater harvesting systems and surface water has increased in the aftermath⁹. Other key findings from the MIRA include:

⁹ INGD MIRA Cyclone Jude in Nampula, 24 March 2025

- Defecation in open or bush areas rose from 9 percent to 19 percent after the cyclone.
- Only 19 percent of women and girls have access to washable sanitary pads, disposable sanitary pads, or any other materials for menstruation management.
- Less than 4 percent of respondents reported having handwashing facilities available at all times.

These findings indicate a pressing need for WASH interventions in the affected areas. There is an urgent requirement for water purification efforts to ensure access to safe drinking water for the affected populations. Immediate repairs and the establishment of temporary sanitation solutions are necessary to prevent outbreaks of diseases such as cholera. Furthermore, there is a critical need for hygiene promotion activities to educate communities on the importance of handwashing, safe food preparation, and effective waste management practices to mitigate the risk of disease transmission.

The provision of hygiene kits, which include soap and other sanitary items can improve hygiene practices among affected populations. In February 2025, the Mozambique Red Cross Society, with the support of IFRC and Canadian Red Cross, provided hygiene kits to 500 households in Nampula, Mozambique. However, needs are still huge in the communities affected by the consecutive cyclones and floods.

Furthermore, the increase in vector-borne and waterborne diseases due to flooding in some areas continues to pose a health risk to both affected communities and responders.

- **Protection gender and inclusion:** Destruction and displacement due to tropical cyclones have become a recurring challenge for many families in the affected areas, such as in Memba or Ilha de Mozambique, which had already been hit recently by TC Chido and Dikeledi, respectively. As a result, many families have been displaced multiple times already.

As part of the people impacted by the cyclone who had to leave their home, many went to transit centers due to the damage of their houses. As the number of arrivals at these centers has increased, some have become overcrowded and are not able to provide gender-segregated facilities or sufficient lighting, which has impacted protection risks such as gender-based violence and general safety,

Vulnerable groups, such as women, children, the elderly, and people with disabilities, face a higher risk of exploitation and abuse. Protection must be prioritized, especially in shelters, to prevent gender-based violence and ensure the inclusion of those most in need. The lack of necessary items for children to return to regular activities, such as school, is limiting child protection efforts.

Rapid protection assessment conducted by protection cluster during mid-March 2025 in Nampula, Mozambique reveals that

- 95 percent of respondent reported feeling unsafe after the cyclones
- 30 percent of the respondents engaged in harmful coping strategies due to cyclone impact such as selling assets, survival sex, domestic violence and begging

- **Risk reduction, climate adaptation, and recovery:** Many communities in the affected countries have little access to early warning systems, leaving them vulnerable to events like floods and Tropical Cyclones. This places an increased for loss of life and damage to property during the onset of disasters. Further, many dwellings lack adequate reinforcement for high winds, increasing the risk of displacement during Tropical Cyclones.

Operational risk assessment

The operational risks remain largely the same as those outlined in the [Operational Strategy](#) issued on 26 March 2025, pages 23 to 25. The risk of additional Tropical Cyclones has diminished considerably, however, additional heavy rain may continue to disproportionately impact high-risk areas. The compounding effects of successive Tropical Cyclones has diminished local capacity and resilience to recover, and there is considerable risk for rapid growth in water-borne diseases like cholera, causing a continuous deterioration of the humanitarian situation. Further, loss of institutional funders such as USAID in the region has created further uncertainty in the capacity of the wider humanitarian community to respond to the emergency, placing greater need on fewer available resources.

Risk	Likelihood	Impact	Mitigating actions
More weather disturbances will impact the same areas, causing increased flooding and landslides.	Medium ↓ (Decreasing)	High	<p>Risk reduction:</p> <ul style="list-style-type: none"> Expand the operation under a revised appeal to address additional needs as they emerge. Implement continuous weather monitoring and maintain strong communication and contingency planning with National Societies. Pre-position supplies in strategic locations with strong supply chains. Train volunteers in disaster response to enable rapid mobilization and intervention. <p>Risk transfer: Work with partners such as FRC-PIROI to enhance preparedness and response efforts, leveraging their experience in the region.</p>
Increase in vector and waterborne diseases due to persistent flooding, posing a health risk to both affected communities and NS staff.	High ↑ (Increasing)	High	<p>Risk reduction:</p> <ul style="list-style-type: none"> Prioritize and emphasize key health promotion messages and hygiene promotion activities with communities. Ensure that staff and volunteers are thoroughly briefed on health and safety protocols and receive appropriate personal protective equipment (PPE). Work with partners to implement community-based surveillance systems (CBS) to quickly detect and respond to outbreaks. Provide access to safe water, WASH supplies to mitigate the spread of disease. <p>Risk acceptance:</p> <ul style="list-style-type: none"> Coordinate with Health Cluster Agencies monitor cholera situation and partner wherever possible to respond to cholera outbreaks using Early Action Protocols (EAPs) and existing crisis multipliers.
Lack of funding to support the planned response and readiness activities.	High ↑ (Increasing)	Medium	<p>Risk reduction:</p> <ul style="list-style-type: none"> Develop a robust and well-articulated funding appeal that highlights the specific needs and urgency of the situation. Diversify funding sources, engaging both traditional and non-traditional donors. Implement strict cost controls and prioritize essential activities to maximize the impact of available funds.

			<ul style="list-style-type: none"> Maintain full financial transparency and accountability to build and maintain donor trust. <p>Risk transfer:</p> <ul style="list-style-type: none"> Use existing partnerships and networks to advocate for increased funding (various). Explore innovative financing such as anticipatory action funding and forecast-based financing. <p>Risk acceptance:</p> <ul style="list-style-type: none"> Identify core activities that can be delivered within a reduced budget in the event that full funding is not obtained. Provide coaching with NS HQ staff on prioritizing actions that maximize budget effectiveness by capitalizing on areas of NS expertise. <p>Recovery actions:</p> <ul style="list-style-type: none"> Develop a plan for downscaling or adjusting operations if funding shortfalls persist to ensure best use of resources while reducing impact. Prioritize response activities as the need arises.
Political instability impacting the access to communities or delaying activities.	Medium (Holding)	High	<p>Risk reduction:</p> <ul style="list-style-type: none"> Implement continuous monitoring of the security and political situation, maintaining strong relationships with local authorities and communities. Engage with ICRC, particularly in Mozambique, to maintain access and security. Develop detailed contingency plans with alternative distribution routes and strategies to adapt to access restrictions. Prioritize staff and volunteer safety, incorporating security risk management into operational planning, and ensuring staff and volunteers are trained and aware of security protocols. <p>Risk transfer: Work closely with security and risk management experts to develop risk assessments and mitigation plans.</p>

While the peak cyclone season is ending in the Southwest Indian Ocean regions, there is an ongoing threat of other weather disturbances developing and affecting the countries, potentially bringing heavy to intense rain leading to flooding. This scenario poses challenges for the National Societies in preparedness, resource mobilization, and coping capacity. Red Cross Red Crescent staff, responders, and volunteers are exhausted by the consecutive cyclones and overwhelming needs on the ground. Some of Red Cross and Red Crescent staff and volunteers have also been affected by the cyclones.

The current security situation in Mozambique is tenuous; political protests have been increasing in recent weeks, preventing field travel.

B. OPERATIONAL STRATEGY

As of 19 March 2025, the coverage of the emergency appeal stands at 6 per cent. On behalf of the National Societies, the IFRC extends its gratitude to all partners who have contributed and urges for additional resources to support the operating National Societies. This will enable them to deliver an effective response and enhance the capacity of local branches and communities in preparation for future cyclones and the resulting floods, in accordance with the strategies outlined below.

The strategies outlined in the [SWIO TC Operation Strategy \(MDRS1005\)](#), specifically pages 13-15, remain relevant at the regional level. However, the Operation Strategy allows for flexibility in adapting interventions within country plans based on their specific needs and gaps. With the support of the IFRC Secretariat, National Societies have developed their country plans in Comoros, Madagascar, Malawi, and Mozambique.

The Operational Strategy employs a dual focus: immediate response and long-term preparedness for tropical cyclones, consecutive floods and lightning.

Immediate response

The immediate response aims to assist 168,450 people (IFRC Secretariat target) across Madagascar, Comoros, Mozambique, and Malawi, focusing on at least one of the following, depending on the intensity and geographical area affected, as well as the presence of other humanitarian agencies active in the affected area: shelter and EHI, MPCA, food and livelihood support, first aid, MHPSS, and WASH assistance for vulnerable groups. The operation emphasises the integration of CEA and PGI to ensure that response efforts are inclusive and equitable.

The Comoros Red Crescent is primarily focusing on MPCA, PGI, and CEA as part of its response, while multisectoral response activities are being implemented in Madagascar, Malawi, and Mozambique.

Long-term preparedness

The readiness plan aims to strengthen both National Societies and at-risk communities.

Key actions to enhance National Society capacity include:

- Review and update the contingency plan and standard operating procedures and test them through simulations.
- Train National Society staff and volunteers on different sectors
- Replenish emergency stocks

Similarly, key actions to enhance resilience in vulnerable communities include:

More than 376,000 people targeted (as per the IFRC Secretariat target) through preparedness and capacity-building activities in the vulnerable communities. The plan incorporates risk reduction and climate adaptation measures to mitigate vulnerabilities, ensuring that affected communities receive comprehensive support that addresses both their immediate and long-term needs.

- Implement community projects to address risk identified from enhanced vulnerability and capacity assessments (EVCA) in high-risk communities.
- Conduct early warning systems awareness and capacity-building initiatives.

The selection of communities for preparedness are based on a variety of factors, including the likelihood of exposure to cyclones and related flooding, the limited presence of other humanitarian and development actors, and the local population's limited adaptive capacities and high levels of socio-economic vulnerability.

Federation wide approach

The operation will continue to emphasize a Federation-wide approach to addressing the response and preparedness needs of affected communities. Support from Participating National Societies (PNS) through human, financial, or material resources will be coordinated with appeal funds to maximize impact wherever possible.

This approach has proven effective in all countries covered by the appeal. For example, a Danish Red Cross crisis modifier was utilized by the Malawi Red Cross Society following Tropical Cyclone Jude, while funds from the Emergency Appeal were reallocated to support an emergency needs assessment. In Madagascar, the FCDO project crisis modifier has supported the response work of the Malagasy Red Cross in the southern provinces of Madagascar following TC Honde and Jude, leaving appeal funds to support other regions not supported by the project. Additionally, discussions are ongoing with the Spanish Red Cross regarding potential contributions to underfunded areas of the Appeal. In the Comoros, the Comoros Red Crescent has been working closely with FRC-PIROI to conduct EVCA's for communities at-risk for flood events, which will now expand to include 36 additional communities identified as being at the highest risk for Tropical Cyclone impacts.

Similarly, cholera response initiatives in Mozambique are complementing the Emergency Appeal:

- Mozambique Red Cross Society is planning to activate a crisis modifier supported by Belgian Red Cross for Cholera response in Nampula, Mozambique. These activities align with the Emergency Appeal and enhance currently underfunded WASH/health initiatives, including community mobilisation, volunteer training in health, and further distributions of water purifying agents.
- The Swedish Red Cross is providing technical support in WASH, including assessments in areas affected by the Cholera outbreak.
- Discussions are progressing with the German Red Cross regarding an application for potential emergency funding, which could provide additional support in WASH and health.

Refer to Table 5 for the number of people targeted by the operation, both by the IFRC Secretariat and across the Federation.

Country	IFRC Secretariat target			Federation-wide target		
	Response	Readiness	Total	Response	Readiness	Total
Comoros	*450	**61,152	61,602	450	61,152	61,602
Madagascar	-	125,500	125,500	20,000 ¹⁰	125,500	145,500
Malawi	30,000	50,000	80,000	45,000 ¹¹	50,000	95,000
Mauritius	-	10,000	10,000	-	10,000	10,000
Mozambique	138,000	100,000	238,000	148,000 ¹²	100,000	248,000
Seychelles	-	10,000	10,000	-	10,000	10,000
Zimbabwe	-	20,000	20,000	-	20,000	20,000
Total	168,450	376,652	545,402	213,450	376,652	590,102

**The Comoros Red Crescent is providing MPCA to 75 households affected by the cyclone with an average household size six.
 **The Comoros Red Crescent has reduced its target for preparedness from 116,300 to 61,152 to focus on villages directly impacted by Tropical Cyclone Chido and those identified to be most at risk for future cyclone impact. The strategy will provide more thorough interventions to strengthen housing and address community risks informed by the EVCA's.*

¹⁰ [FCDO Crisis modifier](#) target: 20,000 people

¹¹ [Malawi AA](#) target: 15,000 people

¹² Existing IFRC Cyclone Early Action Protocol to support 2,000 households in Mozambique



National Societies engage the community at every stage of intervention, from assessment to response and readiness activities in the operation. Malawi Red Cross staff and volunteers are discussing the purpose of the cash distribution and explaining the feedback response mechanism in Blantyre district. **Photo Credit: Malawi Red Cross Society**

C. DETAILED OPERATIONAL REPORT

STRATEGIC SECTORS OF INTERVENTION

 Shelter, Housing and Settlements	Federation wide	Reach: 40,5434		
	Secretariat	Target: 11,150		
	Female > 18: 8,373	Female < 18: 7,430		
	Male > 18: 8,562	Male < 18: 6,389		
	Male > 18: 8,562	Male < 18: 6,389		
Objective:	<i>To provide immediate and adequate shelter solutions for those affected by the cyclones and floods, ensuring safety and dignity</i>			
Key indicators:	Indicator	Target (Secretariat EA)	Actual (Secretariat EA support)	Actual (Federation wide support)

Number of households receiving emergency shelter and/or essential household items	2,100	2,973	2,973
Number of households receiving shelter toolkit	2,100	1,771	3,727
Number of households receiving construction materials/ cash and voucher assistance for repair or rebuilding their shelter	1,700	1,671	1,671
Number of households receiving shelter technical support for the repair or rebuilding of their shelter	1,700	0	0
Number of staff/volunteers trained in safe shelter, including essential household items.	300	0	0
Number of people reached with training/awareness-raising session on safe shelter.	61,700 ¹³	0	0
Number of accommodation centers established that meet humanitarian standards, including safety and protection measures.	N/A	0	37*

Malawi

During the reporting period, the Malawi Red Cross Society selected four districts—Balaka, Blantyre, Kasungu, and Zomba—in the Central and Southern regions of the country for the intervention under SWIO TC, supported by the IFRC Secretariat. This selection was based on a shelter damage assessment carried out by the MRCS in February, in conjunction with the District Councils.

The National Society provided essential household items to 972 households, with each household receiving a tarpaulin, a solar lamp, a kitchen set, and a blanket across the four districts to meet the immediate needs of families still suffering from the impacts of Tropical Cyclone Chido. A total of 1,117 households are targeted in these districts; however, due to a lack of items in the warehouse, the remaining 145 households will receive the items once replenishment is made through the Appeal fund. The IFRC Secretariat commenced the procurement process for these items in March 2025.

Furthermore, the National Society provided cash assistance to 1,671 households for rebuilding their homes in the same districts, with each household receiving MWK 100,000 (equivalent to CHF 51).

Mozambique

In response to Tropical Cyclones Chido, Dikeledi and Jude, the Mozambique Red Cross Society distributed shelter and EHI, reaching out to more than 20,000 people from **4,103** households in Nampula and Niassa provinces, Federation-wide. Table 6: Number of households supported through shelter essential household items in Mozambique.

Province	HH supported	Number of shelters and essential household items											
		Shelter tool kits	Tarpaulin	Kitchen set	Blanket	Mat	Solar lamp	Mosquito net	Capulana	Hygiene kit	Menstrual Kit	Soap (in bar)	Bucket
Nampula	3,747	2,747	3,962	299	897	897	566	9,000	459	566	566	854	1,132
Niassa	356	0	0	0	0	0	0	0	0	0	0	0	0
Total Federation-wide	4,103	2,747	3,962	299	897	897	566	9,000	459	566	566	854	1,132

¹³ The target has been increased from 1,700 to 61,700 as the Comoro Red Crescent is planning to implement build back better and Cyclone resistant building techniques awareness activities targeting 60,000 people in Comoros.

Additionally, 968 households in Cabo Delgado province received shelter toolkits with the support of the ICRC.

The distributions aimed to address the urgent need for shelter in damaged homes, providing basic tools and materials for the repair of housing and providing essential household items that were either buried or flooded by the cyclones and consecutive floods.

During the distribution, the team implemented a monitoring system to ensure equitable and transparent delivery of items. They utilized registration forms to track recipients and closely monitored the quantity of items distributed. The National Society is planning systematic PDM in the community for April 2025.

Key challenges of the operation include:


- The construction materials prevalent in the area, mainly sand and bamboo, resulted in very fragile structures, making it difficult to assess the level of destruction between total and partial damage. Even the collapse of a single wall could lead to the complete loss of a house.
- Identifying the most vulnerable households was challenging, as nearly all homes in the communities were impacted by the cyclones.

Madagascar

The Malagasy Red Cross Society has aided in the establishment of 37 accommodation sites (16 in Dekenedi, 7 in Honde, and 14 in Jude) across the Atsimo Andrefana, Atsinanana, Menabe, and Sava regions of Madagascar. This initiative forms part of the ongoing programme supported by the IFRC/BRC, with funding from the FCDO. The accommodation sites have provided shelter, food, health, and WASH services to over 17,800 individuals who have lived there. The National Society mobilized more than 230 volunteers for assessment, early warning system awareness campaign, support the management of the accommodation sites and evacuation in accommodation sites.

Comoros

The Comoros Red Crescent is planning to train 60 volunteers on the Build Back Better and cyclone resistant building techniques. A total of 720 community awareness sessions will be offered to 60 villages on Anjouan, Mohéli, and Grande Comore with the intended target of reaching 10,000 households. This project will be funded by the IFRC Emergency Appeal and supported technically by an existing FRC-PIROI construction advisor based in the Comoros and the Shelter Officer from IFRC Cluster level.

 Livelihoods		Female > 18: 0	Female < 18: 0	
		Male > 18: 0	Male < 18: 0	
Objective:	<i>To restore the livelihoods of affected populations to ensure their long-term recovery and resilience.</i>			
Key indicators:	Indicator	Target (Secretariat support)	Actual (Secretariat support)	Actual (Federation-wide)
	Number of households receiving livelihood support (CVA/livelihood input)	200	0	0
	Number of people of people trained in business planning	200	0	0

Number of people trained in vocational training	120	0	0
---	-----	---	---

During the reporting period, National Society distributed food items to the people affected by tropical cyclones and consecutive floods. For instance, 87 households received three-day emergency food kits, including rice, oil, and hygiene supplies from Malagasy Red Cross Society, as part of the ongoing project supported by IFRC/BRC, FCDO in March 2025.

The IFRC is coordinating with partners for the possibilities of food security and livelihood interventions in the affected areas.

 <p>Multi-purpose Cash</p>	Federation wide	Reach: 15,017
	Secretariat	Target: 27,250
		Reach: 7,529
	Female > 18: 1,957	Female < 18: 1,957
	Male > 18: 1,957	Male < 18: 1,656

Objective: *To provide cash and voucher assistance to affected households, enabling them to meet their multiple needs and prioritize their recovery based on their unique circumstances.*

Key indicators:	Indicator	Target (Secretariat support)	Actual (Secretariat support)	Actual (Federation wide)
		Number of households that received multi-purpose cash grants or conditional/unconditional vouchers	3,150	1,673

Malawi

With the support of the IFRC Secretariat, the Malawi Red Cross Society provided a one-off MPCA of MWK 80,000 (equivalent to CHF 41) to each of 1,671 households across four districts: Balaka (587 households), Blantyre (153 households), Kasungu (669 households), and Zomba (272 households). The households were selected based on a detailed assessment conducted in February 2025, which determined the level of destruction to shelter as well as general vulnerability criteria (including the impact on livelihoods and particularly vulnerable family members or heads of households) in March 2025. Cash for the minimum food basket recommended by the Cash Working Group is MWK 70,000 (equivalent to CHF 36) in Malawi. However, the National Society provided MWK 80,000 (equivalent to CHF 41) to account for inflation in prices.

Similarly, with support from DRC, the National Society provided MPCA cash assistance to 1,664 households affected by TC Chido and Jude. In December 2024, 635 households whose homes were destroyed by Tropical Cyclone Chido received MWK 70,000 (equivalent to CHF 36) each to address their urgent needs, primarily for shelter. In March, assistance was provided to 1,029 households in Blantyre and Phalombe, enabling them to relocate to safer areas.

Comoros

The Comoros Red Crescent is developing cash and voucher assistance standard operating procedure (SOP) and deliver cash to 75 households affected by the TC Chido.



Health & Care

(Mental Health and psychosocial support /
Community Health / Medical Services)

Federation wide	Reach: 5,557
Secretariat	Target: 87,000
	Reach: 2,700
Female > 18: 756	Female < 18: 621
Male > 18: 783	Male < 18: 540

Objective:

- To address the psychosocial needs of the affected population and responders.
- To reduce immediate morbidity and mortality, prepare for, prevent, and rapidly contain emerging health risks, and build long-term health capacities at the community level

Key indicators:

Indicator	Target (Secretariat support)	Actual (Secretariat support)	Actual (Federation wide)
Number of people reached with psychosocial and mental health services.	N/A	0	2,857
Number of people reached with basic health services	500	0	0
Number of volunteers trained in ECV	400	0	0
Number of households receiving mosquito nets	5,000	540	0

Mozambique Red Cross Society distributed mosquito nets/long-lasting insecticidal nets (LLIN) to 540 households in the Memba and Nipepe districts of the country. Each household received three mosquito nets to protect the vulnerable people from vector-borne illness such as malaria.



Water, Sanitation and Hygiene

Federation wide	Reach: 24,500
Secretariat	Target: 87,000
	Reach: 1,250
Female > 18: 350	Female < 18: 288
Male > 18: 363	Male < 18: 250

Objective:

To reduce health risks and increase dignity through the provision of safe water, adequate sanitation, and hygiene promotion

Key indicators:

Indicator	Target (Secretariat support)	Actual (Secretariat support)	Actual (Federation wide)
Number of households provided with hygiene kits	4,000	250	500
Number of people reached through hygiene promotion activities and IEC materials	87,000	0	12,000
Number of households receiving water treatment materials with information on how to use them.	5,650	0	2,000
Number of households have access to safely managed drinking water services, or an improved drinking water source constructed or rehabilitated.	N/A	0	0

	Number of sanitation facilities constructed or rehabilitated.	N/A	0	0
--	---	-----	---	---

Mozambique


The Mozambique Red Cross Society distributed 500 hygiene kits, 250 menstrual hygiene kits, and 500 plastic buckets to over 2,000 people from 500 households in the Mossuril and Ilha de Moçambique districts of Nampula province during the last week of February 2025, with 52 per cent of recipients being female. These items (250 hygiene kits, 250 menstrual hygiene kit and 500 buckets) were provided through in-kind support from the CRC via the IFRC. To ensure all selected households received the same essential items, the National Society supplied an additional 250 hygiene kits. Each of 2,000 households received three bars of soap, water purifier, one bucket (14L) and one jerrycan part of the Early Action Protocol in Mossuril.

Madagascar

In response to Tropical Cyclone Honde, the Malagasy Red Cross Society provided 200 bars of soap to 200 individuals in accommodation centres in the Morondava district of the Menabe region in Madagascar. This support was part of an ongoing project funded by the FCDO through British Red Cross/IFRC.

Comoros

The Comoros Red Crescent is pre-positioning 100 hygiene kits in preparation for next years' cyclone season.

	Protection, Gender and Inclusion	Federation wide	Reach: N/A	
		Secretariat	Target: 168,200	
			Reach: N/A	
		Female > 18: N/A	Female < 18: N/A	
		Male > 18: N/A	Male < 18: N/A	
Objective:	<i>To ensure that all people affected by cyclones and floods have access to assistance in a non-discriminatory and equitable manner, with a focus on safety, dignity, access, and participation. The IFRC aims to address the causes, risks, and consequences of violence, discrimination, and exclusion in an integrated way.</i>			
Key indicators:	Indicator	Target (Secretariat support)	Actual (Secretariat support)	Actual (Federation wide)
	Percentage of latrines constructed or rehabilitated that meet the needs of women and vulnerable groups.	100	No latrine construction occurred during the reporting period.	
	Number of National Societies completing Child Safeguarding Risk Analysis for the operation	7	0	0
	Number of National Societies implementing internal codes of conduct on child protection and prevention of sexual exploitation and abuse.	7	NA ¹⁴	NA

¹⁴ Data/information not available

Number of National Societies have their data on “people reached” disaggregated by gender, age and disability	7	3 ¹⁵	3
Number of staff and volunteers trained in PGI, including referrals	600	200	200
Percentage of assessments and analysis carried out, integrating PGI considerations as part of this emergency operation.	100	NA	NA
Number of women and girls reached by menstrual hygiene resources/kits	8,000	250	500
Number of people reached with protection, gender and inclusion programming.	4,950	NA	NA



Malawi Red Cross Society trained 200 volunteers on PGI and mobilised them in early warning actions, assessments and response activities.

National Societies that have distributed relief items have maintained records of those reached, disaggregated by sex, age, and disability. However, this practice is not applied to mass-level activities such as awareness campaigns for early warning systems. As of 31 March 2025, distributions have only taken place in Madagascar, Malawi, and Mozambique in response to the tropical cyclones.

National Societies prioritise vulnerable people in their response. This photograph is from Nampula provinces, Mozambique where National Society distributed mosquito nets. **Photo Credit: Fonseca Etide, Mozambique Red Cross Society**

IFRC Secretariat is engaging with National Societies for Child Safeguarding Risk Analysis for the operation



Community Engagement and Accountability

Objective:

The diverse needs, priorities and preferences of the affected communities guide the response ensuring a people-centred approach through meaningful community participation. This involves integrating meaningful community participation, open and honest communication, and mechanisms to listen to and act on feedback.

Key indicators:


Indicator	Target (Secretariat support)	Actual (Secretariat support)	Actual (Federation wide)
Number of National Societies with a CEA policy/strategy/plan or where CEA has been integrated into existing strategies.	7	N/A	N/A
Number of community feedback meetings conducted	30	N/A	N/A
Percentage of people surveyed who feel the National Society's support/services meet their most important needs/provide useful support.	80	This data will be captured from PDM and other surveys.	

¹⁵ As of 31 March 2025, distributions have taken place in Madagascar, Malawi and Mozambique as part of this operation.

Number of National Societies with methods established to communicate with communities about what is happening in the operation, including selection criteria if these are being used	7	N/A	N/A
--	---	-----	-----

National Societies engage communities at every stage of the operation in Comoros, Madagascar, Malawi and Mozambique. For instance,

- Malawi Red Cross Society carried out entry level meetings in the selected districts for the operation. The National Society also conducted orientation on the purpose of the distribution and explained feedback mechanism prior to cash and essential household items distribution.
- Mozambique Red Cross Society informed the selected households through multiple channels, primarily with the help of local authorities, who communicated the date and time of the Red Cross distributions during community assemblies.
- The Comoros Red Crescent is re-deploying the feedback collection system developed during the 2024 Cholera Response for use post cyclone season. The system will be used to gather feedback from 60 targeted communities for both response and resilience-building activities.

	Risk Reduction, climate adaptation and Recovery	Female > 18: N/A	Female < 18: N/A	
		Male > 18: N/A	Male < 18: N/A	
Objective:	<i>Communities in high-risk areas are prepared for and able to respond to disaster</i>			
Key indicators:	Indicator	Target (Secretariat support)	Actual (Secretariat support)	Actual (Federation - wide)
	Number of shelter and household items packages prepositioned.	1,400	0	0
	Number of National Societies with engagement in early warning and anticipatory action.	7	5	5
	Number of National Societies have National Disaster Response teams trained and systems in place for their management.	7	5	5
	Number of people reached by disaster risk reduction public awareness messaging and public education campaigns (PAPE) ¹⁶ .	200,000	115,000	913,000

¹⁶ This indicator has been added to monitor the hazard, risk and EWS awareness efforts in the operation

National Societies reached out to more than 900,000 people with early warning awareness campaigns including mass message dissemination in Malawi (715,000 people), Madagascar (185,000 people) and Mozambique (13,000 people) from December 2024 to March first half 2025. Out of which, 115,000 people were reached through IFRC



Malagasy Red Cross Society volunteers evacuate at-risk communities to accommodation centers in Maroantsetra district during TC Dekeledi. Photo credit: Malagasy Red Cross Society.

Secretariat support in Malawi.

Malawi

Malawi Red Cross Society initiated international procurements for the 1,117 households covered in the TC Chido response but included items for an additional 300 households for prepositioning. The items have not been received in-country yet, but the prepositioning already came in useful during TC Jude, where Malawi Red Cross Society deployed the remainder of their warehouse stock to respond to urgent needs. Here the incoming stock will replenish the items deployed.

During TC Jude, the National Society activated its Anticipatory Action Protocols and deployed NRTs to all at-risk districts, to conduct early warning message dissemination and assessments. The efforts were supported by the SWIO Appeal, Danish Red Cross and Belgian-Flanders Red Cross, and in total 115,000 persons were reached with early warning messaging through door-to-door dissemination.

Enabling approaches



National Society Strengthening

Objective:

To ensure that operations involving external resourcing and technical expertise have a positive effect on current and future National Society response capacity for annual cyclone events.

	Indicator	Target (Secretariat support)	Actual (Secretariat support)	Actual (Federation wide)
Key indicators:	Number of volunteers insured	N/A	N/A	N/A
	Number of National Societies with branch capacity development plan(s) based on BOCA assessments in the operation area.	7	0	N/A
	Number of National Societies with contingency plan(s) for the identified major hazards	7	0	N/A

Enhancing National Societies' capacities and providing technical support

IFRC Secretariat has been engaging with and supporting the National Societies in their assessments, responses, and country-level planning. As of 31 March 2024, in addition to assessments and responses, the National Societies from Comoros, Madagascar, Malawi, and Mozambique have their draft plans ready for response and readiness activities.

Strengthening National Societies' disaster and crisis response capabilities at headquarters and branch by supporting existing actions undertaken by FRC-PIROI and other PNS.

- Part of Federation wide response and readiness, IFRC Secretariat has mapped out FRC-PIROI and other PNS's plan to strengthen the capacity of the National Societies. The IFRC Appeal will fill the relevant area of capacity building which are not covered by PNS or FRC-PIROI.
- FRC-PIROI is hosting a post-cyclone season lessons learned workshop in May for counties in SWIO region. There will be participation from IFRC network including Operating National Societies in the workshop.

Training to volunteers in early warning, early action, PGI and CEA

- Training to volunteers is one for the priorities of the country plans.
- National Societies are preparing conduction of training to the volunteers.

Ensuring that duty of care, accountability and sustainability of essential services are considered

- Part of the Emergency Appeal, National Societies are ensuring their volunteers who are deployment in response and readiness activities.
- The National Societies are primarily responsible for monitoring of the operation in the field. They have established mechanisms for monitoring of the activities and results and capturing feedback and learning of the operation as well as plan for exit surveys, PDM, knowledge attitude and practice surveys, lessons learned workshops that will ensure accountability and sustainability of the essential services.
- Additionally, National Societies have lessons learned, and good practices, documented and shared through periodic operational reviews and coordination meetings to ensure continuous improvement and organizational learning. Feedback will be received throughout the intervention, logged and tracked to achieve maximum feedback at community level.

Replenishing and pre-position stocks in at-risk areas by leveraging existing actions undertaken by FRC-PIROI and other PNS.

- IFRC Secretariat is progressing towards procurement of the items to replenish stock. Refer to Secretariat Services section of this report for the detail.



Coordination and Partnerships

Objective: *To ensure a coordinated approach to meeting humanitarian needs and to avoid duplication of efforts through partnerships.*

Key indicators:	Indicator	Target (Secretariat support)	Actual (Secretariat support)	Actual (Federation wide)
	Number of National Societies with membership coordination mechanism in place	7	7	7

Maintaining direct coordination between National Societies and national disaster authorities.

Mozambique Red Cross Society is working in coordination with local meteorological institutions (INAM) and Hydro (DNGRH) and the National Institute for Disaster Risk Management (INGD).

Malagasy Red Cross Society participates in the Critical Incident Response Committee (CRIC) meetings which serves as the primary coordination platform involving all partners at national, regional and local levels. Initiated by the BNGRC Operations Centre at the national level, these meetings are regularly convened at the outset of each operation. There were seven CRIC meetings since December 2024 to 31 March 2025. Malagasy RC also participate in different sectoral working groups and is the co-lead for Shelter. In 2024, Malagasy RC and IFRC signed a tripartite agreement on Disaster Law and this positioned the National Society to become a main government partner at national and regional levels.

Supporting National Societies in coordinating with in-country IFRC members and ICRC

- Malawi Red Cross Society hosts bi-weekly Partners Calls for in-country partners, coordinating ongoing operations, including this Emergency Appeal.
- Malagasy Red Cross Society engaged in close coordination with the authorities and partners through the event via standard coordination mechanisms as per the regional SOP.
- The IFRC Secretariat organised partner calls on a daily basis during the cyclone period and weekly, as needed, during quieter periods in Mozambique to update on the cyclone situation and support the National Society in early warning actions, assessments, and responses in a coordinated manner in Mozambique.
- There are ongoing discussions with ICRC due to the impact in Cabo Delgado and the need to respond in the area.

Leveraging PNS crisis modifiers for existing Anticipatory Action and Early Activation Protocols through 'network' way of working.

The operation has emphasized way of working to address the response and preparedness needs of affected communities.

- Malawi Red Cross Society has utilized the Danish Red Cross crisis modifier following Tropical Cyclone Jude, while funds from the Emergency Appeal were reallocated to support an emergency needs assessment.
- In Madagascar, the FCDO project crisis modifier has supported the response work of the Malagasy Red Cross in the southern provinces of Madagascar following Tropical Cyclones Honde and Jude, leaving appeal funds to support other regions not supported by the project.

- Mozambique Red Cross Society activated IFRC Cyclone Early Action Protocol to support 2,000 households

Coordinating response, preparedness and readiness activities with regional platforms like FRC-PIROI.

- Weekly meetings will also be planned with the operational team in the country and IFRC, French Red Cross, and PIROI to stay updated. The mechanism for monitoring operations is based on human resources, tools for collecting data and monitoring the progress of operations, as well as capitalizing on lessons learned.

Activating IFRC’s shelter cluster ‘co-coordination’ role

- First rotation of Shelter Cluster Coordinator has been completed and deployed second rotation who has been leading the coordination with other stakeholders in Mozambique.

Ensuring complementarity with other agencies and stakeholders by actively participating in HCTs and relevant cluster coordination meetings.

- IFRC network have been coordinating with the platforms such as the HCT, which meets monthly or on an ad hoc basis as necessary for humanitarian updates and align the response strategies across all countries involved in this operation

Engaging in humanitarian diplomacy to represent members and affected communities

- National Societies have conducted needs analyses based on assessments in the impacted countries. In response to these needs, the IFRC network has been engaging with public authorities and partners to secure resources and support for those in need in the affected areas. This engagement is essential for effective humanitarian diplomacy, representing both members and the communities affected.
- Additionally, the IFRC network communication team has been creating and sharing communication products, including action-oriented photographs, video clips, interviews, and key messages across various platforms such as Facebook and X. These activities are crucial for representing the needs of affected communities and highlighting the humanitarian efforts of the Red Cross Red Crescent.

Shelter Cluster Coordination

Objective:	<i>To ensure a coordinated, comprehensive, quality, coherent and consistent response on Shelter and Settlements.</i>
-------------------	--

As co-lead of the Shelter Cluster, IFRC is coordinating with local authorities and partners to develop immediate response actions, map available resources, and ensure timely information sharing to address the shelter needs of affected communities.

Mozambique :

The coordination of the shelter cluster has enabled better integration of the National Society and the IFRC into the coordination structure for the northern region in Mozambique, led by the International Organization for Migration (IOM). This ensures that there is no duplication of actions, and that the National Society/IFRC has up-to-date information on the needs generated by TC Chido, Dikeledi, and Jude, as well as the priorities in the sector response.

Cluster coordination is essential to support partners in the processes of monitoring events and their impact. It has been possible to effectively report impact figures, humanitarian priorities (geographic areas), and sectoral planning for the response. Shelter cluster is working in close coordination with local authorities to identify their response actions and analysing the potential humanitarian gap in the province of Zambezia.

In Mozambique, shelter cluster leadership is shared with IOM, who assume this responsibility for the northern region, provinces of Cabo Delgado, Nampula, and Niassa. This appeal has initially responded to TC Chido and Dikeledi, which have impacted the province of Nampula, and therefore IOM leads the processes of developing sectoral strategies, plans, and objectives. For the central and southern regions, through the leadership of IFRC, preparation actions have been carried out for TC Jude, which entered Mozambique in the week of 10 March 2025. The CCD Mapula is supporting the dissemination of key information, mapping human and material resources, and coordinating closely with local authorities as well as other humanitarian actors to advance with needs assessments and possible response actions. In this sense, cluster coordination is also informing the HCT about potential intervention districts, the number of people in need, the number of people targeted for assistance, the type of activities, and the financial requirements of the sector.

In the various coordination platforms such as the ICCG, which serves as a bridge with the HCT, the shelter cluster coordination has reported on the main humanitarian challenges of the current rainy/cyclonic season.

The shelter cluster coordination has developed online training for cluster partners, and specific training for authorities at the national, provincial, and district levels. The topics so far have been "needs assessments" and "information management."

Considering the scarcity of resources in the sector, the cluster is also working on a historical analysis of the impact of weather events on people's shelter, with the aim of developing advocacy products that allow for capturing more resources for the sector.

In agreement with national authorities, the shelter cluster leads a coordination platform with government focal points at the national, provincial, and district levels, to improve information exchange and cluster-government coordination, especially at the field level, where more challenges arise.

Challenges:

- In the central and southern regions of the country, frequently hit by cyclones, heavy rains, and floods, sector resources are scarce. In recent years, cluster partners have prioritized the prolonged crisis in the northern region due to armed conflict.
- Since the end of 2024, the political situation has generated civil unrest nationwide, which, due to security concerns, has limited mobility and humanitarian assistance.

Lessons:

- The progress in government-cluster coordination has been significant, generating greater visibility and respect for the IFRC's humanitarian mandate for the shelter sector in Mozambique. The National Society and the IFRC are better integrated as shelter cluster partners at the national level.
- The integration of the National Society into the cluster structure takes time and still requires ongoing support. Improving information exchange processes can make a significant contribution to the Movement's positive image in the country.
- Build capacity within the National Society regarding the cluster system, with the aim of achieving the following specific products:

- Identification and integration of a focal point by sector in each active cluster.
- Promote the National Society as co-leader of the cluster (in as many clusters as possible).

The direct participation of National Society members in various cluster meetings, to share information such as available resources and planned, ongoing, and completed response actions, is a good practice to adopt.



IFRC Secretariat Services

Objective:

To ensure comprehensive and coordinated response and readiness for tropical cyclones through provision of essential support to the National Societies and IFRC network including supply chain management PMER, information management and learning human resources, finance, security risk management; PMER, communications, and advocacy.

The IFRC will coordinate with in-country PNS wherever possible to align the Operational Strategy with existing programmes and activities to ensure the effective use of funds.

	Indicator	Target (Secretariat support)	Actual (Secretariat support)	Actual (Federation wide)
Key indicators:	Number of surge personnel/ rapid response members deployed to support the operation	N/A		
	Percentage of financial reporting in compliance with IFRC procedures	100	N/A	N/A
	Percentage of compliance with IFRC safeguarding, child protection, and minimum PGI standards	100	N/A	N/A

Supporting needs assessments, defining targeting criteria in the response phase, planning, capturing learning, reporting and evaluations.

- IFRC Secretariat field coordinators provided technical support to National Societies in needs assessments in Comoros, Madagascar, Malawi and Mozambique

Sharing forecast information and support the revision of contingency plans

The Regional Information Management team supported Tropical Cyclone Emergency Appeal at different phases of the operation.

- Communicating alerts to inform regional and cluster staff on forecast, trajectory and expected time and area of impact for any tropical storms and cyclones.
- Production and dissemination of (monthly or on-demand) Tropical Cyclone Risk Watches to anticipate risk impact and expected humanitarian consequences of tropical cyclone and floods throughout the season to enable operational preparedness and targeted interventions (from December 2024-April 2025).
- Providing updates on system status during weekly coordination calls involving IFRC Cluster, regional and Secretariat IM and Operations colleagues.

Developing and maintaining a monitoring system of the operation, including an appropriate data-management mechanism

- Database was developed containing key information for each event, including number of people affected, displaced, at risk and people assisted by different response activities.
- Dashboard to monitor tropical cyclones and flood impacts was developed using the data collected on people affected, casualties and shelter/infrastructure damage. Visual would give data at country and provincial level.
- During Chido and Dikeledi emergency, the team ran crisis categorizations and drafted disaster briefs to rapidly inform decision-makers on operational priorities.
- Several maps and visuals have been produced to inform on areas affected, number of people affected and displaced for countries affected by Tropical Cyclones and Floods. These products were also used in several documents to support operations and logistics strategies in the different emergencies.

Establishing a mechanism and tools to capture and share real time learning in the operation.

The IFRC Secretariat maintain close contact with the National Society to ensure that the operation is proceeding smoothly, adapting to the context as needed. There is regular face to face or online meeting to monitor the situation with the National Society, using monitoring tools as appropriate.

At the Cluster delegation level, staff will also be available to support the operation, including the operations team, communication, Program Monitoring, Evaluation, and Reporting (PMER), Logistics, and Finance. A satisfaction survey will be carried out after each sensitization/training/workshop, and an exit survey during each distribution. A post-distribution follow-up is planned after each distribution.

Communications

The IFRC communications team is supporting information sharing through its platforms.

Mozambique

- Press release on Red Cross responds to cyclone Chido and scales up preparedness for future storms as initial assessments paint a grim picture on 26 December 2025 at IFRC website: <https://www.ifrc.org/press-release>
- IFRC Africa regional office deployed Senior Communications Officer to support and cover the distribution of relief items in Mossuril, Nampula, ensuring visibility of the humanitarian response.
- Shared distribution footage of relief items donated by the Government of Canada with the Canadian Red Cross communications team, who shared it on the [Canadian Red Cross](#) social media, as well as with the Government of Canada.
- Posted a high-performing video on [IFRC Africa's X](#) page showcasing the relief distribution to families affected by the cyclone landfall.
- Further disseminated the distribution coverage through the IFRC Mozambique Head of Delegation's account, amplifying the reach of the response- <https://x.com/NaemiHeita/status/1884907144530600295>
The Mozambique Red Cross did the same on their X account: https://x.com/Red_Cross_Moz/status/1888872939606467042
- Live X interviews to provide updates on the various responses after TC Chido and other systems
- Posted information and response about Cyclone Jude on IFRC Africa's X page <https://www.facebook.com/share/p/1XyahafL56/?mibextid=wwXlfr>
- https://x.com/ifrcafrica/status/1902374516866646177?s=46&t=YD9QXpiH_9k6f04hKWAjqg
- Published photographs and key messages at [shaRED](#)

Malawi

MRCS engaged local newspapers, which brought printed stories to the distributions

The following article was posted on the MRCS Facebook:

- https://www.facebook.com/malawiredcross/posts/pfbid02JmGbn8D8XSaTutmA4naF9xHtpgPDhhQUKhaK9UrbSoP8UfDfwgHedEmznNrgXGTxl?_rdc=1&_rdr#
- Posts were also made on X (formerly Twitter):
- (2) Malawi Red Cross Society on X: <https://x.com/MalawiRedCross/status/1901635411723665618>
- (2) Malawi Red Cross Society on X: <https://x.com/MalawiRedCross/status/1901635417834676295>

Logistics and supply chain

Mozambique:

Following Tropical Cyclone Chido, relief items from PIROI's emergency procurement and a Canadian Red Cross in-kind donation were delivered in January to the Mozambique Red Cross Society. Airbus provided pro-bono air transport from Réunion Island. The mobilisation table for Mozambique was published on 14 March 2025. A new contribution from the French Government, facilitated through PIROI, will provide 3,000 tarpaulins, 1,500 shelter toolkits, 4,500 mosquito nets, and 2,500 buckets, with shipment scheduled from Réunion to Maputo on 22 April.

Malawi:

The mobilisation table for Malawi was also published on 14 March 2025. IFRC has raised purchase requests totalling CHF 90,000 for pre-positioned stock dispatches from Dubai and Las Palmas, including blankets, sleeping mats, kitchen sets, and tarpaulins. Solar lamps arrived in Malawi customs on 21 March and are expected to be received by early April.

Indian Ocean Islands:

Coordination continues with PIROI to assess logistics needs in Madagascar and Comoros. The Comoros Red Crescent has indicated plans to procure hygiene kits. No mobilisation tables have been published for the islands. Logistics teams are awaiting procurement requests to initiate support.

Security

- IFRC has provided pre-deployment security briefings to surge members travelling to field locations ensuring staff have an understanding of security risks, mitigation, and contingency and have capacity to implement measures.
- The IFRC also provided Field movement support to all staff deployed in the field inclusive of situational updates, ad hoc route and accommodation assessments, overall security risk analysis and assessment for affected provinces.
- Weekly SMT meetings to discuss in country developments and assess impact on security of personnel, assets and operations and review contingency and other measures.

Surge capacity/ Rapid response management system

- As of 15 March 2025, the IFRC has deployed 10 surge profiles to support the operation. This includes a regional operational manager, a regional supply chain coordinator, a regional PMER coordinator, and three field coordinators (each for Madagascar, Malawi, and Mozambique), a supply chain coordinator for Mozambique and a finance and administration coordinator for Comoros. Likewise, there is deployment of Shelter Cluster Coordinator; first rotation completed and second rotation is ongoing.

D.FUNDING

As of 19 March 2025, the Emergency Appeal coverage is 6 per cent (including in-kind donations) against the IFRC Secretariat funding requirement of CHF six million. The table below shows contribution received for the Secretariat EA:

Donor	Amount in CHF
DG ECHO	187,140
Japanese Red Cross	28,882
Canadian Red Cross	125,800
Total	341,822

The IFRC expresses its gratitude to donors and kindly encourage further contributions to fill the remaining gap to enable the National Societies, with the support of the IFRC, to continue with humanitarian assistance efforts as well as the required recovery actions.

Contact information

For further information, specifically related to this operation please contact:

- **Comoros Red Crescent** Secretary General: Daniel Ali Soumailli; email: soumaildani@gmail.com, phone: +269 3607060
- **Malagasy Red Cross** Secretary General: Andoniaina Ratsimamanga; email: andoniaina.ratsimamanga@crmada.org, phone: +261 32 04 194 02
- **Mauritius Red Cross** Head of Programmes: Navin Mahadoo; email: navin.dmc.mrcs@outlook.com, phone: +230 5 797 0095
- **Malawi Red Cross** Secretary General: McBain Kanongodza; email: mkanongodza@redcross.mw
- **Mozambique Red Cross** Secretary General: Cristina Uamusse; email: cristina.uamusse@redcross.org.mz, phone: +258 82 3012251
- **Seychelles Red Cross** Secretary General: Marie-May Esparon; email: sg@redcrossseychelles.sc, phone: +248 2 562 963
- **Zimbabwe Red Cross** Secretary General: Elias Hwenga; email: eliash@redcrosszim.org.zw

In the IFRC

- **Operational coordination:** Gabriela Arenas. Coordinator, Regional Operations, email: gabriela.arenas@ifrc.org,
- **IFRC Regional Office for Africa**, Manager Preparedness and Response: Rui Oliveira; email: rui.oliveira@ifrc.org, +254 780 422 276
- **IFRC Country Cluster Delegation Antananarivo**, Head of Delegation: Maria Martinez, email: maria.martinez@ifrc.org, +261 32 11 326 24
- **IFRC Country Cluster Delegation Maputo**, Head of Delegation: Naemi Heita; email: Naemi.heita@ifrc.org, +27 82 926 4448
- **IFRC Country Cluster Delegation Harare**, Head of Delegation: John Roche; email: john.roche@ifrc.org, +263 77 212 86 48
- **IFRC Geneva**, Senior Officer Operations Coordination: Santiago Luengo; email: Santiago.luengo@ifrc.org, +41 79 124 40 52

For IFRC Resource Mobilization and Pledges support:

- IFRC Regional Office for Africa, Regional Head Strategic Partnerships and Resource Mobilisation: Louise Daintrey; email: louise.daintrey@ifrc.org

For In-Kind donations and Mobilization table support:

- **Logistics** Olle Kaidro, Regional Supply Chain Coordinator for SWIO TC Emergency Appeal, olle.kaidro@ifrc.org Tel: +258 87 609 4294
- **IFRC Regional Logistics Unit Manager:** Allan Kilaka Masavah; email: allan.masavah@ifrc.org, Tel: +254 113 834 921

Reference documents

Click here for:

1. [Emergency Appeal](#)
2. [Operational Strategy](#)