



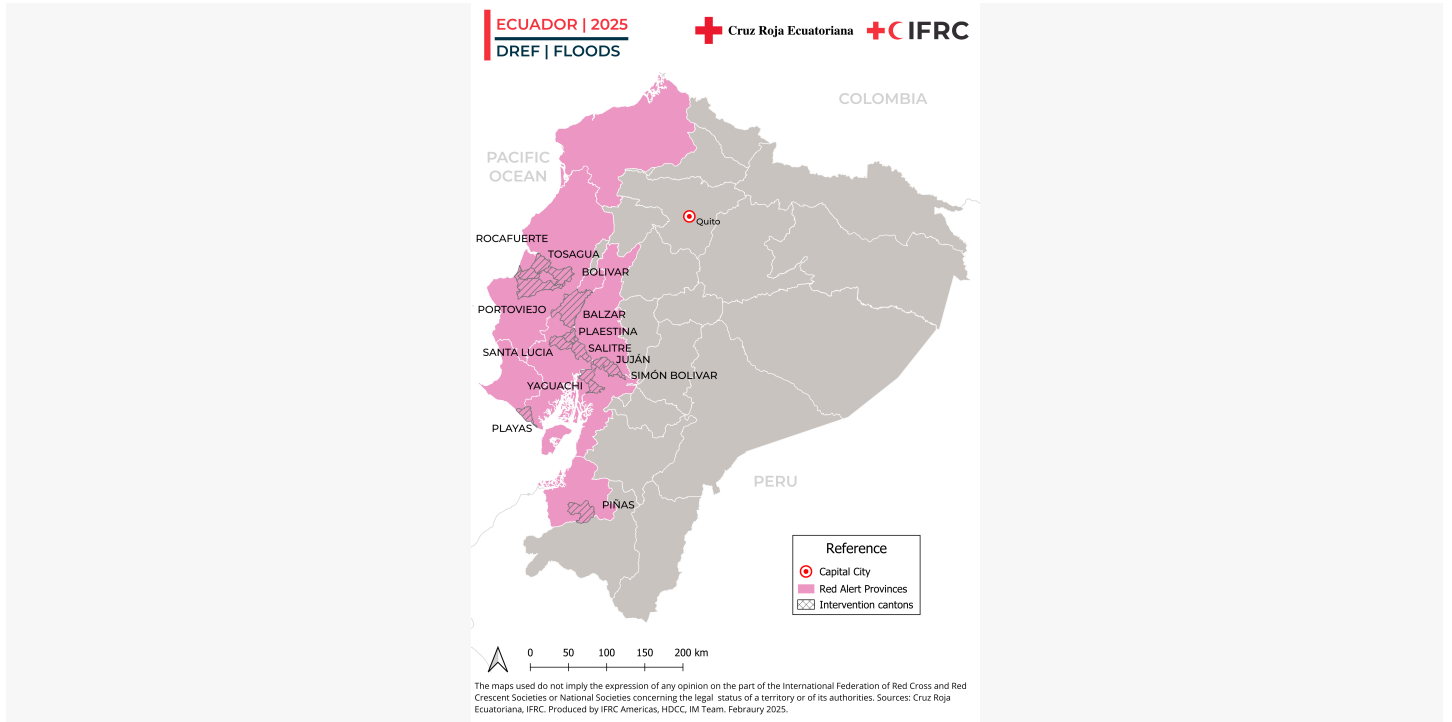
Data collection on flood impact. Portoviejo Canton, Manabí Province. Source: ERC. March, 2025.

Appeal: MDREC027	Country: Ecuador	Hazard: Flood	Type of DREF: Response
Crisis Category: Yellow	Event Onset: Sudden	DREF Allocation: CHF 497,015	
Glide Number: FL-2025-000026-ECU	People Affected: 78,752 people	People Targeted: 19,368 people	
Operation Start Date: 10-03-2025	Operation Timeframe: 6 months	Operation End Date: 30-09-2025	DREF Published: 11-03-2025
Targeted Areas: El Oro, Guayas, Manabi			

Description of the Event

Date of event

25-02-2025



Map of cantons prioritized for the operation. Source: ERC - SNGR. March 2025.

What happened, where and when?

On 25 February 2025, through Resolution No. SNGR-050-2025, the National Secretariat of Risk Management (SNGR) declared a regional state of emergency for 60 days in the provinces of Guayas, Los Ríos, Manabí, El Oro, Esmeraldas, Santa Elena, Loja, and Azuay. This decision was made in response to the severe impacts of the rainy season, which, between 1 January and 4 March, resulted in approximately 1,182 adverse events, including floods, landslides, and structural collapses.

Previously, on 24 February 2025, the SNGR issued Resolution No. SNGR-046-2025, declaring a Red Alert in the provinces of El Oro, Esmeraldas, Guayas, Manabí, Los Ríos, and Santa Elena; an Orange Alert in Azuay, Bolívar, Chimborazo, Cotopaxi, Loja, and Santo Domingo de los Tsáchilas; and a Yellow Alert in the remaining 12 provinces of Ecuador. This measure aims to enhance emergency preparedness and response at the territorial level, enabling Decentralized Autonomous Governments (GAD) to activate contingency plans and manage aid for affected populations. Additionally, on February 17, 2025, the National Government, through the National Emergency Operations Committee (COE), declared a permanent session and activated its Technical Tables (MTT) and Working Groups (GT) to coordinate actions in response to the rain-induced emergency.

The emergency, classified as Level 4: Disaster, has impacted over 75,000 individuals nationwide, corresponding to approximately 20,000 families in 2025. The most affected provinces include Manabí, Guayas, Los Ríos, El Oro, Esmeraldas, Chimborazo, and Cotopaxi. Manabí has been the hardest hit, with 50,011 individuals affected by 125 events, followed by Guayas, where 13,226 individuals have been impacted by 162 adverse events.

In the province of El Oro, the Piñas canton has been significantly affected, recording over 14 adverse events since 24 February, including two major floods on 24 and 28 February. The latter, caused by the overflow of the San Roque river, resulted in water and mud flooding the city, destroying homes and both public and private infrastructure. Consequently, over 400 individuals were affected, 81 were injured, and two fatalities were reported. In response to the emergency, on 25 February, the Piñas Cantonal Emergency Operations Committee (COE) declared a permanent session, while the canton's Decentralized Autonomous Government officially declared the emergency through Resolution No. 092-ACGADM-P-2025.

To coordinate the emergency response across the territory, the National Decentralized Risk Management System (SNGRD) has activated six Provincial COEs, 46 Cantonal COEs, and 10 Parish Commissions for Emergencies (COPAE). Additionally, 10 cantons have declared a state of emergency: Celica, Calvas, Loja, Saraguro, and Olmedo (Loja); Piñas (El Oro); Cotacachi (Imbabura); Chimbo (Bolívar); Centinela del Condor; and Nangaritza (Zamora Chinchipe), the latter being the first canton to issue a disaster declaration for the emergency, in accordance with Article 65 of the Organic Law for the Integral Management of Disaster Risk.

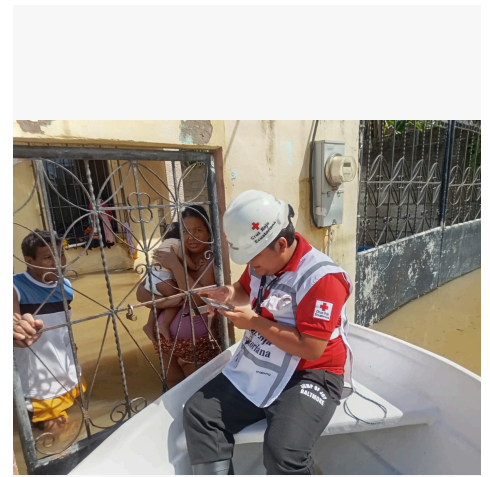




Rapid Assessment Survey in a Shelter facility in the Municipality of Piñas, El Oro. Source: ERC. March, 2025.



Community fumigation. San Jacinto, Guayas. Source: ERC. March, 2025



Data collection on the impact of the emergency. Santa Rosa, El Oro. Source: ERC. March, 2025

Scope and Scale

According to Situational Report No. 44 of the SNGRD, between 1 January and 4 March, 2025, 78,752 individuals have been impacted, having incurred severe material losses or experienced compromised livelihoods due to 1,182 adverse meteorological events. Additionally, 91 individuals have sustained injuries, and 14 fatalities have been reported.

The recorded events include landslides (42.47%), floods (36.97%), erosion (5.67%), structural collapses (5.58%), strong winds (3.64%), mudflows (3.05%), ground subsidence (1.95%), hailstorms (0.34%), and thunderstorms (0.34%), which have caused damage to infrastructure and essential services, impacting multiple sectors.

In the infrastructure domain, 20,092 residential structures have been affected, with 87 completely destroyed. The road network has reported the deterioration of 29.05 kilometers of roads, along with damage to 13 bridges and the total destruction of three bridges. Furthermore, 87 private properties and 81 public properties have been affected, with total losses of 11 and 15, respectively. In the education sector, 27 units have sustained structural damage, while 68 have had their operations compromised.

The provinces with the greatest impact include Manabí, Guayas, Los Ríos, El Oro, Esmeraldas, Chimborazo, and Cotopaxi. Manabí has recorded the highest number of affected individuals, with 50,011 people impacted by 125 events, in addition to four fatalities and one injury. In Guayas, 13,226 individuals have been affected by 162 events. In Los Ríos, 6,555 individuals have been affected by 86 events, resulting in one fatality and one injury. In El Oro, 5,163 individuals have been affected by 148 events, resulting in two fatalities and 83 injuries. In Esmeraldas, 798 individuals have been impacted by 47 events. In Chimborazo, 746 individuals have been affected by 40 events, resulting in one injury. In Cotopaxi, 576 individuals have been impacted by 24 events.

The adverse effects have compromised access to basic services, primarily the supply of potable water, due to damage to distribution systems and contamination of water sources. In rural areas, exposure to wastewater has increased the incidence of dermatological, respiratory, gastrointestinal, and vector-borne diseases. Regarding the latter, an uptick in dengue cases has been observed. As of 23 February 2025, 7,650 cases had been confirmed nationwide, with an average of 956 new cases per week.

Additionally, there have been documented disruptions in the electricity supply, impacts on agricultural production, and restrictions on internet access. In the education sector, the suspension of in-person classes in several locations has been a necessary measure, with a progressive resumption of classes as conditions have permitted.

The Ecuadorian Red Cross (ERC) is supporting the Initial Rapid Assessment in the affected areas through its branch teams. In coordination with the National Secretariat of Risk Management, it is continuously monitoring the needs of individuals housed in the 22 temporary shelters and refuges established to accommodate affected families, which have provided assistance to over 1,000 individuals from 305 families.

Source Information

Source Name	Source Link
1. 3. Resolution No. SNGR-050-2025 of 25 February 2025. National Secretariat of Risk Management.	https://www.gestionderiesgos.gob.ec/wp-content/uploads/downloads/2025/02/RESOLUCION-No.-SNGR-050-2025.pdf
2. 4. Vector-borne diseases. Year 2025, SE 1- 8. Ministry of Public Health	https://www.salud.gob.ec/wp-content/uploads/2025/02/Eventos-de-Vectores-SE-08.pdf
3. 5. Active shelters for the rainy season. ERC with information from SNGR	https://app.powerbi.com/view?r=eyJrIjoizjNiYzE2YjUtNjE0NC00YWI2LWE5N2YtMzY1NDNiMmUyMzhhliwidCI6IjM5NjYzMzc1LWlxNzQtNDQyYS05MmUwLWLNmZGQ1OWY0OWRiMiIsImMiOjR9
4. 1. Resolution No. SNGR-046-2025 of 24 February 2025. National Secretariat of Risk Management.	https://www.gestionderiesgos.gob.ec/wp-content/uploads/2025/02/Resolucion-SNGR-046-2025-epoca-lluviosa-24feb25.pdf



5. 2. SitRep No. 44 - Rainfall, from 01 January to 4 March 2025. National Secretariat of Risk Management.

<https://www.gestionderiesgos.gob.ec/wp-content/uploads/2025/03/SitRep-No-44-Lluvias-01012025-al-04032025.pdf>

Previous Operations

Has a similar event affected the same area(s) in the last 3 years?	Yes
Did it affect the same population group?	Yes
Did the National Society respond?	Yes
Did the National Society request funding form DREF for that event(s)	Yes
If yes, please specify which operation	MDREC018 in 2022; MDREC021 and MDREC023 in 2023; MDREC026 in 2024

If you have answered yes to all questions above, justify why the use of DREF for a recurrent event, or how this event should not be considered recurrent:

In recent years, Ecuador's winter seasons have intensified. The 2024 rainy season resulted in over 105,000 people being affected by flooding, representing the highest number recorded in recent years. Climate change and the consequent shifts in temperature, which have altered established weather patterns, play a significant role in the severe impact of this emergency. As of early 2025, nearly 80,000 people have been affected by heavy rainfall and flooding, and this figure is expected to rise as damage assessments conducted by the National Secretariat for Risk Management progress.

For this DREF operation, priority has been given to parishes that have not been covered by previous DREF interventions. These areas have been selected based on the Ecuadorian Red Cross's capacity to provide support and its preliminary assessment of the affected population. The chosen provinces are among the most severely impacted in the country, and the targeted communities comprise individuals who have been critically affected by the emergency, aligning with the designated intervention areas for this operation. Additionally, the selection process has been coordinated with organizations providing assistance at the national level to ensure complementarity and avoid duplication of efforts.

Furthermore, it is important to consider that families located in high-risk areas face multiple vulnerability factors. Despite preparedness actions carried out by various response actors within the National Decentralized Risk Management System (SNDGR), ensuring the necessary physical, economic, and structural capacity for these families to effectively respond to an emergency has not been achieved.

Lessons learned:

Leveraging the operational experience from DREF-funded interventions for similar emergencies (MDREC023 floods in 2022, MDREC021 response to floods and earthquakes in March 2023, and MDREC026 floods linked to the El Niño Phenomenon in 2024), the following community work mechanisms have been enhanced:

(1) Response Distribution to Mitigate Duplication: To prevent redundant actions among organizations, the response has been strategically divided across various areas within each canton (municipality). This approach has refined the organizational structure and coordination among all stakeholders. The Emergency Operations Committee (EOC) allocates specific operational zones to each intervention team based on data derived from the Initial Needs Assessment (EVIN).

(2) Cash Transfer Programs: The deployment of these programs has streamlined logistical resources, minimized personnel requirements, and reduced the time necessary for analysis, preparation, and distribution. The implementation of standardized Emergency Procedures for humanitarian assistance has expedited the generation of bank codes, thereby enhancing the response's timeliness.

(3) Community Engagement and Accountability: Emphasizing the integration of response and development, community involvement in the response has been prioritized. This has empowered individuals to participate in decision-making processes and address issues impacting their environment.

(4) Periodic Security Analysis: Conducting regular security assessments at both national and local levels has supported informed decision-making by local authorities and technical teams, thereby improving the efficacy of response operations.

Current National Society Actions

Start date of National Society actions

28-02-2025

Shelter, Housing And Settlements	<p>At the local level, the Ecuadorian Red Cross (CRE) is providing support in the establishment of 14 temporary shelters across six provinces: El Oro (6), Manabí (5), Pichincha (1), Los Ríos (2), Loja (1), and Santa Elena (1). Their efforts include information collection, psychological first aid and psychosocial support services, basic first aid, community awareness, provision of chlorine, and analysis of the sanitation and water situation, in coordination with the SNDGR. Additionally, through the "Active Rainy Season" Shelters dashboard on Microsoft Power BI, it monitors incidents and needs in the shelters.</p> <p>https://app.powerbi.com/view?r=eyJrIjoizjNiYzE2YjUtNjE0NC00YWI2LWE5N2YtMzY1NDNiMmUyMzhliiwidCI6IjM5NjYzMzc1LWlxNzQtNDQyYS05MWUwLWNmZGQ1OWY0OVRiMiIsImMiOjR9</p>
Livelihoods And Basic Needs	<p>Considering the installed capacities and the experience of the field teams, guidelines have been provided to get started:</p> <ul style="list-style-type: none"> Information gathering and analysis of local markets. Needs assessment, identification of areas and profile of the affected population. Identification of financial providers in the area. Coordination with the Ministry of Agriculture and local governments to gather information and determine levels of impact, especially in the



	agricultural and livestock sector. If necessary, participate in the Technical Working Groups MTT-4 (Temporary Shelter and Humanitarian Assistance) and MTT-6 (Livelihoods and Productivity).
Health	<p>In the affected provinces, institutional health personnel actively participate in Technical Working Group 2 (MTT2), with continuous support from the national technical team for the planning and implementation of activities.</p> <p>To date, the following actions have been executed:</p> <ul style="list-style-type: none"> * Epidemic Control and Community Awareness: Implemented in El Oro, Guayas, and Manabí. * Prevention of Vector, Diarrheal, and Dermal Diseases: Conducted in temporary housing in El Oro, Guayas, and Manabí. * Community Cleanup and Fumigation: Executed to eliminate vector breeding sites prior to establishing temporary shelters in Manabí. * Activation of Psychosocial Care Teams: Providing psychological first aid and emotional support, with a focus on gender, protection, and inclusion in El Oro, Guayas, and Manabí. * Pre-Hospital Care and Evacuation Support: Facilitated for the affected population, ensuring the security of technical teams deployed in El Oro, Guayas, and Manabí.
Water, Sanitation And Hygiene	<p>In its auxiliary role, the National Society serves as the primary support reference for the SNGR in the Water, Sanitation, and Hygiene (WASH) sector, actively participating in Technical Working Group 1. The National WASH Training and Response Center has response teams ready for deployment, comprising technical personnel specialized in water purification, fumigation, sanitation, community awareness, and sodium hypochlorite production. These teams are equipped to respond efficiently and effectively in emergency situations, ensuring the health and well-being of affected communities.</p> <p>To address the emergency, resources such as fumigation and cleaning supplies, water storage drums, water purification plants, water filters, chlorinators, and chlorine production equipment have been allocated.</p>
Protection, Gender And Inclusion	<ul style="list-style-type: none"> - Strengthening Volunteer Capacities: A comprehensive operational strategy will be implemented to strengthen volunteer capacities at the national level. This will be achieved through a training scheme, the provision of Restoring Family Links (RFL) kits, and the registration of case management in the FLANSWER platform. Familylinks Answers (FLANSWER) is a digital platform developed by the ICRC in collaboration with National Societies to support RFL services. It serves as a secure and efficient case management system, particularly valuable in humanitarian emergencies. By allowing the registration and tracking of separated individuals, it facilitates global searches and the exchange of information, ultimately aiding in family reunifications. - Activation of RFL Attention Points: Fixed and mobile RFL attention points will be activated in various locations. In El Oro province, an attention point will be set up at the General Coliseum of Piñas to handle requests and conduct awareness-raising activities. Preventive messaging will also be disseminated in other provinces to prevent family separation. - Provision of RFL Services: A range of services will be provided, including tracing requests, family news, connectivity services, document transmission, and support for individuals in vulnerable situations. These services will be tailored to the specific needs of each case. - Preventive Sensitization Campaign: A nationwide preventive sensitization campaign will be carried out to raise awareness about family separation prevention. This will include digital media outreach, with messages available in multiple languages, such as Spanish, English, Quichua, and Ecuadorian Sign Language. The campaign aims to prevent family separation and promote connectivity both within the country and with individuals abroad. - Activation of Missing Persons Services: Services for searching missing persons, providing connectivity, sharing family news, and registering missing children and adolescents will be activated according to the needs identified in each community.
Community Engagement And Accountability	To ensure transparency, digital channels such as the website, chatbot, WhatsApp, and Facebook Messenger were activated, along with informative meetings with communities in the provinces of Guayas, Manabí, and El Oro to communicate the actions carried out.
Coordination	<p>The authorities of the Ecuadorian Red Cross (ERC) actively engage in the coordination frameworks of the SNGR through the Emergency Operations Committees (COE) at all levels (national, provincial, and cantonal), as well as in specific inter-institutional meetings to assess events and immediate response requirements. ERC is integrated into the Technical Working Tables and Working Groups at the national, provincial, and cantonal levels, particularly in the sectors of health, water, humanitarian assistance, emergency shelter, productivity, and rescue, in collaboration with public and private entities. Additionally, it participates in meetings with the Humanitarian Country Team and technical-scientific institutions such as INAMHI.</p> <p>Since the declaration of regional alerts and emergencies, the National Headquarters has maintained direct communication with its branches Authorities and technical teams led by the Risk Management program, supported by community health, to identify capacities and gaps, and to organize the necessary personnel for the response.</p> <p>As part of the activation of the National Preparedness and Response Plan, as well as the Provincial Plans, the ERC activated coordination and operations committees in all affected Provinces and at the National Headquarters. This activation aims to facilitate coordination across all levels, conduct continuous situation analysis, assess field evaluations, and identify gaps to be addressed.</p> <p>The crisis rooms in the eight most affected provinces and the National Headquarters are permanently operational to provide timely and active information flow to and from the field, ensuring team safety and facilitating decision-making.</p>
National Society Readiness	<p>The Ecuadorian Red Cross (ERC) has a Movement Plan for heavy rains, updated to 2023, comprising four modules that delineate national capacities and support lines for each Movement partner based on their capacity and areas of intervention, as well as a National Preparedness and Response Plan. Additionally, the provinces of Guayas, Pichincha, Loja, Los Ríos, Bolívar, Santa Elena, Esmeraldas, Manabí, Santo Domingo de los Tsáchilas, Napo, and Azuay have activated their respective provincial rainfall response plans.</p> <p>For the preparedness, response, and recovery from the impacts of the rainy season, the following guidelines and actions have been established by the National Headquarters of the ERC:</p> <ul style="list-style-type: none"> * Operational Guidelines: Establishment of comprehensive guidelines for preparedness, response, and recovery operations. * Monitoring and Analysis: Continuous monitoring of technical and scientific data, construction of risk scenarios, impact maps, and intervention zones utilizing photogrammetric survey equipment. * Inventory and Stock Management: Updating of inventories and stock levels in ERC's strategic warehouses.



Assessment	<p>Fulfilling its auxiliary role to public authorities, the ERC supports the National Decentralized Risk Management System in the collection of information using the EVIN tool, identifying the effects and needs to address gaps in emergency assistance. At the provincial level, multidisciplinary teams coordinate with community leaders and SNGR and GAD technicians to prioritize assessments, avoid resource duplication, and digitize census data on the EVIN platform.</p> <p>As part of the support to the SNGR and GAD during the needs assessment in the Piñas Canton of the Oro Province on 28 February, the Ecuadorian Red Cross utilized drones to enhance the assessment process. These devices provided real-time imagery and detailed mapping of the affected areas, thereby facilitating decision-making and response coordination.</p> <p>Given the persistent security concerns in some areas of the country, the ERC maintains a structure that includes a security officer in the field, responsible for disseminating safe behavior recommendations to activated personnel. Despite the positive reception of the National Society within communities, the prevailing violence has generated distrust, deterring individuals from sharing personal data due to fears of extortion, kidnapping, and organized crime.</p>
-------------------	---

IFRC Network Actions Related To The Current Event

Secretariat	<p>The IFRC's Andean Country Cluster Delegation (CCD), based in Lima, provides support to Bolivia, Ecuador, and Peru through close coordination with the respective National Societies. Within this framework, it maintains constant communication with various levels of the IFRC, offering comprehensive support to the National Society for planning, implementation, reporting, and other required activities.</p>
Participating National Societies	<p>The Ecuadorian Red Cross (ERC) has enhanced its emergency response capacity through the strategic prepositioning of humanitarian aid supplies in key provinces, including Imbabura, Pichincha, Tungurahua, and Azuay. These stocks, acquired through the Programmatic Partnership with ECHO-DG (PPP) and supported by the IFRC, the Spanish Red Cross, the Italian Red Cross, and the German Red Cross, enable a swift and effective response to emergencies. This approach ensures that critical relief items are available to address gaps in provinces such as Guayas and Manabí, as well as in other areas where humanitarian needs may increase due to escalating impact and funding constraints.</p> <p>Following the emergency in Piñas Canton, El Oro Province, the ERC, utilizing stocks prepositioned through the PPP, rapidly distributed toolkits, blankets, cleaning kits, tarpaulins, and raincoats to affected communities within the first 48 hours. These supplies allowed families to clear debris, clean drainage channels, remove stagnant water, and rehabilitate their homes. Additionally, key emergency interventions such as the deployment of the water treatment plant and the health bus were also financed through the PPP, ensuring access to clean water and essential healthcare services.</p> <p>To maintain the ERC's response capacity, this DREF Action Plan will finance the replenishment of the humanitarian aid supplies that were distributed in El Oro, ensuring that strategic stocks remain available for future emergencies.</p>

ICRC Actions Related To The Current Event

<p>The International Committee of the Red Cross (ICRC) is a key partner in emergency response within the framework of the National Preparedness and Response Plan of the Ecuadorian Red Cross, activated when the Red Cross Movement's coordination mechanism is engaged.</p> <p>In this context, continuous communication is maintained with the ICRC technical team for the exchange of information and advice, under the Cooperation Agreement 2025. The purpose of this agreement is to strengthen the institution and enhance care during emergencies and crises, as well as to consolidate the operational partnership. It also aims to promote protection actions, ensure respect for health care, facilitate safer access, and promote the application of international humanitarian law.</p> <p>For this emergency, ICRC support has been considered in terms of technical advice when security conditions necessitate it; however, no financial support has been anticipated.</p>

Other Actors Actions Related To The Current Event

Government has requested international assistance	No
National authorities	<p>To assist the population affected by the rainy season, in coordination with the Autonomous Decentralized Governments, eight emergency shelters have been established in five affected provinces (El Oro, Los Ríos, Loja, Manabí, and Pichincha), ensuring the provision of basic services such as bathrooms, dormitories, dining rooms, kitchens, health care, and food.</p> <p>As an intervention strategy, six provincial Emergency Operations Committees (EOC), 46 cantonal EOCs, and 10 Parish Emergency Committees have been activated. Through these committees, emergency vouchers, food kits, personal hygiene kits, community cleaning kits, sleeping kits, crockery, kitchen utensils, and other essential items have been distributed to families affected by the floods. The response is based on the sectors assigned to the organizations, a process managed from Technical Working Group 4 (MTT4) for shelter and humanitarian assistance. The distribution of kits and supplies and the attention to families are based on the EVIN (Initial Needs Assessment) survey managed from the central platform.</p> <p>As of 1 March 2025, the National Secretariat for Risk Management had distributed 32,949 relief items, including</p>



	3,662 three- and 15-day food kits, 8,432 water purifiers, 16,740 chlorine sachets, 936 hygiene kits, 793 cleaning kits, 582 sleeping kits, and 189 mattresses.
UN or other actors	<p>The Humanitarian Country Team, comprising non-governmental and United Nations organizations operating in the country, is actively monitoring the situation and developing support plans.</p> <p>The Ecuadorian Red Cross, as an integral partner of the WASH Working Group, collaborates with both international and local organizations to mobilize financial and material resources.</p> <p>To date, the only entities outside the Decentralized National Risk Management System (SNDGR) activated for emergency support are the Catholic Church and the Evangelical Church. These organizations have been particularly active in the provinces of El Oro, Los Ríos, and Manabí, where they have established temporary shelters within their facilities to assist the affected population.</p>

Are there major coordination mechanism in place?

As part of the response operations, the Decentralized National Risk Management System activated the Emergency Operations Committees (COE) at each territorial level affected by the floods. These committees coordinate the actions of public and private institutions providing care at various levels. The Ecuadorian Red Cross actively participates in the water, health, education, humanitarian assistance, productivity, and infrastructure committees at the cantonal, provincial, and national levels, with the latter also involving international cooperation.

This emergency coordination system ensures that information and assistance are not duplicated and serves as a means for analysis and decision-making. The Emergency Operations Committee (COE) Manual outlines the structure of the SNDGR for coordinating care and response during emergencies and disasters. It is important to note that Ecuador currently has an Organic Law for Integral Disaster Risk Management, which directly mentions the Ecuadorian Red Cross in three articles, thereby facilitating the inclusion of actions according to its auxiliary role in humanitarian interventions.

Needs (Gaps) Identified



Shelter Housing And Settlements

According to preliminary information from rapid assessments conducted by inter-institutional teams, it is estimated that 18,238 homes have been affected, with at least 47 destroyed. This information is continually being updated, as access to certain flooded areas remains restricted, necessitating estimates of the number of houses still underwater. Additionally, based on previous flood experiences, damage reports indicate that families have reported the loss or damage of belongings inside their homes, such as beds, mattresses, sheets, and household cleaning supplies.

The primary needs include the provision of sleeping supplies (mattresses, blankets, sheets), debris removal and cleaning, as well as the rehabilitation of infrastructure, particularly in the rural areas of El Oro, Manabí, Guayas, and Esmeraldas, where affected houses require ongoing cleaning to prevent physical and health issues.

Another situation identified at the local level is that families affected or residing in high-risk areas require support to stay in safe spaces until the emergency is over. In response, the SNDGR has established temporary shelters to provide immediate assistance to the population and promotes placement in these shelters. However, in the short to medium term, these families will need to return to their homes, find new spaces, or rebuild their houses. Therefore, it is important to consider the provision of tools to facilitate the rehabilitation of spaces or debris removal for those affected.



Livelihoods And Basic Needs

The agricultural sector has been the most affected by the winter season, particularly in the coastal provinces of Manabí, Los Ríos, and Guayas, which are known for producing rice, cocoa, and corn. According to the Ministry of Agriculture and Livestock, total and partial agricultural damages amount to approximately 3 millions dollars. Medium-scale farmers have invested their resources in renting machinery to drain the water, but small-scale farmers have yet to find solutions for their crops. The negative impacts on livelihoods are pushing families to seek ways to meet basic needs, which, in some cases, involves the activation of negative coping strategies such as indebtedness, food reduction, and informal or high-risk jobs. The short-term consequences of the floods include the following:

- (1) Total or partial loss of crops, destruction of agricultural infrastructure, blocked roads, and eroded agricultural land, resulting in significant economic losses for farmers and the community in general. This causes shortages of food products or increases their prices, affecting the food security of the population. As of the latest report on the impact by the SNGRD No. 44 of 4 March 2025, a total of 1,052.10 hectares of crops have been affected and 1,056.37 hectares of crops have been lost, with Guayas being one of the most affected provinces.
- (2) Loss of livestock due to lack of access to safe pastures, drowning, or injuries during floods, which can lead to shortages of dairy products and meat in the local market, as well as the sale of assets at low prices, migration, and informal indebtedness, among others. Based on the latest SNGRD report No. 44 of 4 March 2025, a total of 45,328 dead animals have been reported.
- (3) Flooding also damages tourism infrastructure, including hotels, restaurants, roads, bridges, and other facilities. The loss of tourism revenues can have a lasting impact on the local economy and the livelihoods of those who depend on tourism. To date, there is no official report of damage to establishments.



Health

The heavy rains of the last few days have significantly impacted the health sector, affecting both the population and the infrastructure and equipment of four health facilities in Esmeraldas (Galeras Health Center), Los Ríos (Matecito Health Center), Guayas (Junquillal Health Center), and El Oro (Piñas Health Center). Although these centers are being immediately supported with resources from the Ministry of Public Health (MSP) for their reactivation, the continuity of health care in some communities has been interrupted, and the response capacity of local health networks has been limited. Among the main needs identified for short-term intervention are the following:

The risk of communicable diseases is present and could increase in the following weeks, not only due to the intense rainfall but also because of the collapse in the operation



of public services and the interruption of health care. This situation requires the implementation of fixed and mobile medical brigades until services are restored in the various affected health centers.

As of Epidemiological Week 7 (EW 7) of 2025, 7,650 confirmed cases of dengue have been reported. This represents a significant increase compared to the 3,097 cases recorded in 2023 by EW 9 and similar figures in previous years, yet a reduction from the 12,244 cases reported in 2024 up to EW 7. Notably, by EW 7 of 2024, cases had increased by approximately 295% compared to EW 9 of 2023, highlighting an intensified transmission of the virus.

During Epidemiological Week 8 (February 17-23, 2025), 914 new cases were reported, representing 16.6% of the annual total. Guayas, Manabí, and El Oro were among the provinces with the highest incidence of dengue cases. This sustained transmission trend, combined with current environmental conditions, raises concerns about a potential increase in cases in the coming weeks.

Heavy rains, occurring at a similar intensity to those in 2024, are exacerbating the situation by causing flooding, limiting access to potable water, and creating ideal breeding conditions for *Aedes aegypti* mosquitoes. These factors, along with the incubation period of the disease, suggest that dengue cases could continue to rise, as seen in 2024, when cases increased significantly after EW 9, reaching critical levels in the following months. Given these patterns, a similar escalation in 2025 remains a strong possibility.

Other diseases that could increase in the coming weeks due to the emergency include leptospirosis, leishmaniasis, malaria, Chagas disease, chikungunya fever, bartonellosis, yellow fever, and other viral fevers transmitted by mosquitoes.

In this context, the Ministry of Public Health has deployed brigades to assist those affected, providing information on health promotion and disease prevention. The Ecuadorian Red Cross is also monitoring the situation on-site; however, for now, the Ministry has not requested additional support.

Due to displacement from their homes, loss of goods and services, and the need for temporary shelters, affected individuals are experiencing significant emotional distress and behavioral changes. The impact of prolonged exposure to floodwaters, precarious living conditions, and uncertainty about the future exacerbates anxiety, stress, and feelings of helplessness. Additionally, the disruption of social support networks and limited access to essential services further contribute to emotional distress, increasing the risk of mental health issues such as depression and post-traumatic stress.



Water, Sanitation And Hygiene

Assessments carried out in the provinces of Manabí (Cantons Portoviejo, Tosagua, Bolívar, and Rocafuerte), Guayas (Cantons Balzar, Palestina, Playas, Salitre, Yaguachi, Santa Lucía, Simón Bolívar, Juján), and El Oro (Cantón Piñas) by the Decentralized Autonomous Governments, with the support of the National Risk Management Secretariat (SNGR), the Ministry of Environment, Water and Ecological Transition (MAATE), and the Ecuadorian Red Cross (ERC), have identified a critical need for the rehabilitation and strengthening of water, sanitation, and hygiene services. Access to safe water, both in quantity and quality, is the primary need in response to the effects of the floods, considering its use for consumption, hygiene, and cleaning. This need arises from the damages registered in the water board systems, contamination of catchment points, and damage to distribution pipelines.

Additionally, limited access to drinking water has forced the population to use river water for drinking, which is currently contaminated by agricultural waste, physiological waste, or garbage due to flooding. They also resort to rainwater collected from roofs without proper cleaning or water distributed by tankers, but with poor storage practices, both during transport and at the household level. This situation continuously exposes communities to gastrointestinal and skin infections, which are especially dangerous for children under 5 years of age, pregnant women, and older adults.



Protection, Gender And Inclusion

Communities face a heightened risk due to the increase in violence in the country. In 2024, the provinces with the highest rates of violent deaths were Los Ríos, El Oro, Sucumbíos, Guayas, Orellana, Manabí, Esmeraldas, Santa Elena, and Cañar, exceeding the average rate of unintentional homicides in Latin America. By 2025, according to the Ministry of Interior, Guayas, Manabí, and El Oro have the highest number of these cases.

This crisis of violence is exacerbated by the rainy season, which has a double or even triple impact on the most vulnerable communities. In addition to insecurity, there is the socioeconomic impact and the ravages of flooding, deepening precariousness and limiting access to services. In this scenario, humanitarian needs become even more urgent in El Oro, Guayas, and Manabí, where the population simultaneously faces violence, the impact of floods, and a complex socioeconomic situation.

The interruption of communication channels may make it difficult to contact family members and loved ones. Telephone and internet services may be affected, complicating communication and generating uncertainty about the whereabouts of those affected, including Ecuadorian returnees, people in need of international protection, and tourists.

Search services are essential due to the risk of temporary or prolonged disappearance, especially of missing children and adolescents.



Community Engagement And Accountability

People affected by the flood require reliable information about available assistance, procedures for accessing it, and measures to protect them from new risks. Lack of access to clear information can lead to uncertainty, misinformation, and difficulties in making decisions about their welfare and recovery. Additionally, the presence of diverse humanitarian actors can cause confusion.

Communities also need to voice their concerns and priorities to ensure that the assistance they receive is relevant and appropriate to their context. In many cases, they do not know how to communicate their concerns or do not have safe and effective spaces to do so.

Finally, communities require tools and knowledge that enable them to understand their situation and prepare for post-emergency challenges. Uncertainty about the future, the impact on their livelihoods, and the possibility of further similar events increase their vulnerability and affect their emotional and mental well-being.

With the electoral process approaching, it is essential to reinforce the understanding of the auxiliary role of the Red Cross and its principles of humanitarian action, ensuring that the community, authorities, and other actors understand its neutrality, impartiality, and independence.



Any identified gaps/limitations in the assessment

At present, the impact figures provided by state entities may not fully capture the scale of the emergency. Field visits and information collected by branches in the affected areas and shelters suggest that the number of affected individuals could be higher. However, access constraints and the recurrence of adverse events continue to pose significant challenges to data collection.

Operational Strategy

Overall objective of the operation

Through this DREF Response operation, the Ecuadorian Red Cross aims to provide humanitarian assistance to 19,368 people affected by the floods caused by the winter season in the provinces of El Oro, Guayas, and Manabí. This will be achieved through the implementation of activities in the sectors of Shelter, Health, WASH, and Cash Transfer Programs, with a focus on Protection, Gender and Inclusion (PGI), and Community Engagement and Accountability (CEA).

Operation strategy rationale

The intervention strategy has been designed based on the experience of the Ecuadorian Red Cross in dealing with humanitarian emergencies resulting from floods. Although the Central Government has not decreed a state of emergency, the declaration of a regional emergency and the resolution of states of alert are being considered, which require national support according to their effects.

Considering that the Ecuadorian Red Cross (ERC) is part of the National Decentralized Risk Management System, works in coordination with authorities of the Decentralized Autonomous Governments at the provincial, cantonal, and parish levels, community leaders, and other key stakeholders in the Technical Working Groups: MTT-1: Safe Water, Sanitation and Waste Management, MTT-2: Health, MTT-4: Temporary Shelter and Humanitarian Assistance, MTT-6: Livelihoods and Productivity, and Working Group 3: Search, Rescue and Pre-Hospital Care (APH). This coordination aims to organize the intervention in a complementary manner to the response plan of the National Decentralized Risk Management System.

Actions have been prioritized in the following components:

I. HEALTH:

Vector control: Due to the floods, it is necessary to strengthen surveillance of vector-borne, zoonotic, water-borne, food-borne, skin, respiratory, and mental health diseases. It is a priority to implement measures for the elimination of breeding sites and monitoring of outbreaks for timely attention. The following response strategy is proposed to reduce the health impact and strengthen epidemiological surveillance in the affected communities:

Development of vector control activities for the elimination of mosquito breeding sites in the affected areas through the distribution of epidemic kits, which include tools for the identification and elimination of breeding sites, accompanied by informative sessions to ensure their correct use. A total of 300 epidemic kits will be distributed to the same number of families (1,200 people). Each epidemic kit consists of rubber gloves, brushes, garbage bags, repellent, and insecticide, with each family receiving one kit.

Community clean-up days, including the delivery of cleaning kits, which will facilitate the safe management of waste and the reduction of infection outbreaks from contaminated water. A total of 10 community cleaning kits will be distributed to the same number of communities. Each kit will consist of brooms, mops, shovels, personal protective equipment, solid waste containers, detergent, disinfectant, and a machete.

Application of rapid health surveys in communities and shelters, facilitating the detection and referral of suspected cases of dengue to the nearest health centers, strengthening the work of epidemiological surveillance from the community.

Development of awareness sessions in shelters and communities to promote early identification of symptoms of diseases such as dengue, respiratory infections, and diarrheal diseases. Community education on hygiene and safe food handling will reduce the risk of diseases transmitted by contaminated food and water.

Mental health: Psychosocial interventions will be implemented, aimed at emotional management and prevention of mental disorders (such as post-traumatic stress disorder and complex grief). Interventions will include psychosocial support and psychological first aid for both the community and responders, facilitating emotional stabilization and stress management. Through these actions, 1,500 people, including affected communities and responders, are expected to be assisted.

As part of the care and self-care of humanitarian personnel who participate and support emergency response actions, the need to implement the HEDA (Experimental Self-Care Tool) sensory immersion methodology has been identified. This tool allows the recognition and management of emotions using virtual reality, providing responders with a space to take care of their mental health. In this way, they can disconnect from environments that generate tension or stress and learn emotional management actions and psychosocial support before resuming their response activities. After use, Mental Health and Psychosocial Support (MHPSS) staff will identify those who need additional support or referral, if necessary.

The Ecuadorian Red Cross (CRE) has developed the ConSentidos - HEDA methodology, an innovative virtual reality tool designed for primary mental health care. Approved in January 2024, this methodology facilitates emotional recognition and management in a safe environment, promoting well-being and self-care. Its impact has been recognized by IFRC's Solferino Academy as a best practice in humanitarian innovation.

To support its implementation, CRE has developed a comprehensive guide outlining the use of immersive tools for mental health, along with a quick reference guide detailing the step-by-step process and vital sign parameters measured before and after using the tool.

Over two years of development, the methodology has been applied in 14 out of the country's 24 provinces, benefiting more than 3,000 people in both regular and emergency contexts. Its portable design and easy installation allow its use in diverse situations, helping to reduce stress and encourage emotional expression. Additionally, it was tested during the National Response Teams Exercise in Ecuador, where key insights were gained to optimize its use in emergency scenarios, ensuring its effectiveness under demanding operational conditions.

From a technical perspective, the application (APK) is hosted on CRE's institutional servers, enabling easy configuration on new devices and ensuring IT team support. It was developed in a version that guarantees functionality for at least eight years and is compatible with the latest Oculus Quest headset versions. Furthermore, it is available in both Spanish and English, facilitating its use in international contexts.

For the implementation of the methodology, a minimum team of four people is required to facilitate the process: one person to take vital signs before and after the



application, one person who knows how to operate the glasses and the application, one person to provide psychological first aid or refer in case of requiring specialized care, and one person for logistical support and control of users accessing the space. As part of this process, three kits will be purchased to support each of the response teams. The kit is composed of Oculus Quest 2 glasses with controls, a glasses case, headphones to isolate noise, and a Redmi Smart Band 2 smartwatch.

II. SHELTER, HOUSING, AND SETTLEMENTS:

This component is designed to support families whose homes have sustained partial or total damage due to the rainy season. Assistance will include the provision of tool kits, plastic tarpaulins, wheelbarrows, and sacks to facilitate the removal of mud from living spaces once the water recedes. Additionally, blankets will be distributed both to families who have lost their belongings but remain in their homes and to displaced individuals accommodated in shelters. Further measures will be taken to adapt the land, restore partially affected housing structures, and clear accumulated debris and drainage points to ensure proper water flow following the rains.

III. MULTIPURPOSE CASH:

The beneficiary population will be selected based on the EVIN survey. However, a validation of the information will be carried out to evaluate and weigh the criteria for targeting resources to the most vulnerable families.

Contact will be made with state entities, GADs, community leaders, neighborhood presidents, or any representative of the affected communities to socialize the intervention proposal and request their participation in all phases of implementation.

Subsequently, monetary assistance will be delivered in accordance with the selected mechanism: a CVA of USD 260 per family (approximately CHF 244), distributed on a single occasion. This amount is calculated considering 47% of the basic food basket, which as of January 2025 is USD 553.95, and is linked to the contingency voucher provided by the Ministry of Economic and Social Inclusion (MIES) in case of emergencies, allowing the solvency of basic needs for 15 days. This is done to establish a standard of care and avoid incidents between communities due to differentiated attention.

For over 15 years, the Ecuadorian Red Cross has collaborated with Banco Pichincha to facilitate financial transactions in humanitarian programmes and emergency operations. Thanks to the coordinated efforts of cash assistance organizations in Ecuador, Banco Pichincha has tailored its services to better address the needs of the target population.

Since 2018, the Ecuadorian Red Cross has managed a Financial Service Provider (FSP) agreement with Banco Pichincha for the "Bono Migrante" program, ensuring the effective delivery of Cash and Voucher Assistance (CVA). Additionally, since 2022, it has secured an over-the-counter payment service for transactions exceeding \$300, strengthening its ability to deliver CVA more effectively.

As part of this operation, a feasibility study will be conducted to determine the most appropriate cash delivery method based on the conditions in the affected areas. The study will assess whether to proceed with cash distribution through ATM withdrawal codes or prioritize over-the-counter collection, with the former being the most common option in flood emergencies.

The intervention will end with the application of a post-distribution follow-up survey to identify the relevance and areas for improvement in the strategy implemented, as well as delivery times.

It is worth mentioning that the national government will manage the activation of traditional agricultural insurance and will waive interest and penalties for productive credits as part of the financial relief policy. However, there is a gap among the lower-income population that does not have insurance or access to credit, making them the target population for complementary assistance in the medium and long term.

IV. WATER, SANITATION, AND HYGIENE:

Floods have caused wastewater to overflow, contaminating water sources. The consumption of contaminated water is a critical factor in the spread of diseases, especially affecting vulnerable groups such as children, adolescents, pregnant women, older adults, and people with disabilities. Therefore, it is essential to implement the following actions:

Deployment of water treatment plants in response to the requirements of national and local authorities (El Oro, Guayas, and Manabí).

Awareness talks on proper water management, hygiene, and cleanliness, along with the delivery of cleaning kits.

Production and distribution of sodium hypochlorite to families in their homes, temporary housing, schools, and other locations.

V. PROTECTION, GENDER, AND INCLUSION:

As this intervention spans different provinces with diverse cultures, languages, and customs, it is important to ensure that all activities are conducted with a focus on interculturality, inclusion, respect, and protection. Consideration should also be given to the variety of organizations and routes for carrying out referrals and making safe referrals for identified cases of people from priority attention groups with specialized care needs to competent entities, whether state or non-governmental.

Through this intervention, an updated mapping of key actors in each zone will be obtained, as well as provincial instructions for safe referrals and referrals in cases identified as priority cases.

Regarding the reestablishment of family contact, a needs assessment will be carried out in each locality to identify the relevance of activating different services, such as search requests, family news, connectivity services, and registration of lost children and adolescents, according to institutional procedures. This process will be complemented with massive and community sensitization days in the affected areas and at the national level, including the languages spoken, such as Spanish, English, Quichua, and Ecuadorian sign language.

The missing persons search request service, connectivity, family news, and registration of missing children and adolescents will be activated according to the need.

VI. COMMUNITY, ENGAGEMENT AND ACCOUNTABILITY:

Community participation is a fundamental pillar of this strategy. To ensure meaningful engagement, various feedback channels will be established, including surveys, suggestion boxes, and community meetings, enabling the collection of concerns and needs directly from the affected population. Additionally, strengthening communication and access to reliable information is essential. The Ecuadorian Red Cross (ERC) will disseminate clear messages regarding its auxiliary role and fundamental principles through visual and audio materials, ensuring that the community fully understands its actions and preventing misinformation. Social media platforms will also be leveraged as mass communication tools to disseminate information on the services provided.

Information Stands:



A key challenge identified in the affected areas is the widespread lack of information regarding the humanitarian aid being provided, the role of the ERC, and the fact that it is not part of the State. To address this, information stands will be set up at strategic locations to provide clear details on available aid, access procedures, and protection measures. These stands will also serve as collection points for community concerns and feedback, ensuring effective communication and transparency. The information gathered will be systematically analyzed to improve response strategies, address misinformation, and strengthen trust between the ERC and the community.

Given the proximity to electoral processes, communication efforts will emphasize the ERC's independence and neutrality to prevent any confusion or potential association with political campaigns.

Feedback Channels:

In addition to physical stands, multiple feedback channels will be implemented to ensure accessibility and confidentiality. These include:

- Physical and digital suggestion boxes for anonymous community feedback.
- Dedicated email addresses where individuals can submit inquiries and requests for information.

A specialized community information analysis team will be established to evaluate, classify, and systematize the collected feedback. This will ensure that data-driven decisions are made to adjust operational responses based on the identified needs of the community.

Community Engagement:

As part of this strategy, focus groups and community meetings will be conducted to gather firsthand information from the population. These activities will promote open dialogue, build trust, and encourage active community participation in decision-making processes.

Capacity Building:

Moreover, capacity building for staff will be strengthened within the framework of Community Engagement and Accountability (CEA) and Protection, Gender, and Inclusion (PGI). This will ensure that field teams are adequately trained to:

- Identify and refer vulnerable individuals to appropriate services in a timely manner.
- Implement effective feedback mechanisms to provide the community with reliable channels for expressing concerns.
- Manage and respond appropriately to sensitive complaints, ensuring a safe, ethical, and humanitarian approach.

Information Dissemination:

- To enhance the transparency and credibility of humanitarian assistance, a visibility and communication strategy will be implemented, including:
 - Digital media and social network messages clarifying the ERC's role.
 - Community discussions and informational campaigns to foster trust and awareness of provided services.
 - Informational labels on assistance kits stating that all aid is free of charge. This measure is particularly relevant in regions with high crime rates, where misinformation could lead to risks such as extortion or illicit charges. These labels will also include a QR code that allows recipients to access a platform where they can provide feedback or make inquiries about the assistance received.

Finally, regarding complementarity, this DREF operation adheres to the principle of nonduplication with ongoing interventions. The Programmatic Partnership with ECHO-DG (PPP project) has been essential in strengthening the Ecuadorian Red Cross's response capacity by prepositioning humanitarian aid supplies in strategic warehouses for rapid deployment in emergencies. This approach ensures that essential relief items, such as toolkits, cleaning kits, blankets, raincoats, and mosquito nets, are readily available for immediate distribution in affected areas.

In El Oro, to ensure a rapid and effective response, PPP supplies are primarily utilized for immediate emergency assistance, with a clear commitment to replenishment through this DREF Operation. Additionally, while the DREF targets prioritized parishes, the PPP project extends support to other affected regions not covered by this funding, such as Santa Elena, Los Ríos, and Esmeraldas, thereby strengthening the overall humanitarian response.

Targeting Strategy

Who will be targeted through this operation?

19,368 people (approximately 4,842 families) affected by the floods in the provinces of El Oro, Guayas, and Manabí will be assisted through the implementation of activities in the sectors of housing, health, WASH, cash transfer programs, protection, gender and inclusion (PGI), and community participation and accountability (CEA).

The breakdown of the 19,368 people to be assisted through this operation includes: 14,368 people who will receive mosquito nets along with additional support based on their needs (kits, CVA, sodium hypochlorite, others), 4,000 people who will receive only sodium hypochlorite, and 1,000 people who will be covered by fumigation campaigns for vector control.

Drawing on the experience of previous interventions, particularly the 2023 intervention, special attention will be given to vulnerable groups such as women, children, older adults, and people with disabilities. The National Society has networks at the community level that enable it to identify these groups and collaborates with local institutions to facilitate the identification of this specific population.

Explain the selection criteria for the targeted population

The population affected by the rainy season, according to the regional emergency declaration, includes those whose homes and/or livelihoods were located within the impact zone or who have suffered physical or psychological effects during the emergencies. The following strategies will be used to corroborate the lists of the selected population:

- * Survey of information on effects (EVIN)
- * Review and validation of information with community leaders
- * Vulnerability criteria that will allow prioritization of assistance:



- * Families with destroyed or uninhabitable homes
- * Single-parent families
- * Families with at least one member who has a disability
- * Families with at least one breastfeeding member
- * Families with at least one person suffering from a chronic or catastrophic illness
- * Families with at least one pregnant woman
- * Families with older adults
- * Families with children under 3 years old
- * Migrant or local families belonging to an ethnic group or the LGBTQBI+ community
- * Families with less than 2 hectares of crops affected

Total Targeted Population

Women	5,763	Rural	75%
Girls (under 18)	4,173	Urban	25%
Men	4,810	People with disabilities (estimated)	2.6%
Boys (under 18)	4,622		
Total targeted population	19,368		

Risk and Security Considerations

Please indicate any security and safety concerns for this operation

In recent years, the country has experienced a worrying increase in crime and violence rates. In 2024, Ecuador registered a violent death rate of 38.76 per 100,000 inhabitants. Although a slight 15% reduction in the homicide rate has been observed, insecurity remains one of the main concerns of the population. The provinces most affected by violence are Los Ríos, El Oro, Sucumbíos, Guayas, Orellana, Manabí, Santa Elena, and Cañar, where the presence of organized criminal groups generates disputes over territorial control and drug trafficking routes.

Organized crime has diversified its activities, including extortion, kidnapping, and human trafficking, which directly impacts the living conditions of communities and hinders humanitarian intervention in certain sectors. Government actions, such as states of emergency and the militarization of some areas, have contributed to a temporary reduction in crime; however, structural challenges persist.

The insecurity situation keeps both the population and the ERC's volunteer and humanitarian personnel on alert in areas at high risk of flooding. According to the security assessment conducted, 14 security risks were identified, of which 8 were categorized with a high potential risk level. Among them, the following stand out:

- * Probability of criminal violence in the intervention zones
- * Aggressions and retention of volunteer and hired personnel
- * Theft
- * Extortion
- * Collateral victims of crossfire
- * Collateral victims of explosive devices
- * Health impacts due to lack of personal protective equipment against active hazardous events
- * Traffic accidents

Violence, extortion, kidnappings, and homicides, especially in the coastal zone, have generated fear among the population. During the survey, many families have refused to share personal data, such as telephone numbers, family information, economic activities, or monthly income, for fear of becoming victims of crime or putting their loved ones at risk.

In this context, the Ecuadorian Red Cross will continue its humanitarian work through:

- * Mandatory designation of a safety officer for each field operation
- * Socialization of recommendations on safe behavior for personnel
- * Application of security protocols in humanitarian assessment and response processes

Additionally, it must be taken into account that between March and April, a second round of elections will take place, involving various political activities in the areas, such as campaigning, marches, and rallies in support of the qualified lists. Due to this, the work of the ERC must always clearly define the humanitarian role and avoid situations that may confuse the population regarding our principles of impartiality and neutrality.

Has the child safeguarding risk analysis assessment been completed?

Yes

Planned Intervention



Shelter Housing And Settlements

Budget: CHF 104,986



Targeted Persons: 4,000

Indicators

Title	Target
Number of families receiving tool kits	1,000
Number of families receiving tarpulins (2 per family)	1,000
Number of families receiving blankets (2 per family)	1,000
Number of families receiving kitchen kits	130

Priority Actions

- * Collection of detailed information on families
- * Prioritization of families to be assisted
- * Local procurement of tool kits, blankets, and kitchen kits
- * Import of tarpaulins
- * Distribution of tool kits, blankets, tarpaulins, and kitchen kits
- * Training the community in the use of the kits and materials delivered



Multi Purpose Cash

Budget: CHF 135,467

Targeted Persons: 2,120

Indicators

Title	Target
Number of families assisted with the delivery of multipurpose cash	530
Number of volunteers trained in cash assistance delivery processes	75
Percentage of families who mentioned that they meet their basic needs	80

Priority Actions

- * Market analysis, feasibility study, and bank risk analysis
- * Request for EVIN records or collection of specific information on families identified as affected
- * Validation of the list of beneficiaries from other institutions
- * Training of beneficiaries in the reception and use of CVA
- * Implement the distribution mechanism identified
- * Post-distribution follow-up/final satisfaction survey



Health

Budget: CHF 90,949

Targeted Persons: 14,368

Indicators

Title	Target
Number of people who access to pshychosocial support services	1,500
Number of people receiving health promotion	3,000
Number of epidemic kits delivered	300
Number of families receiving mosquito nets (3 per family)	3,592
Number of families assisted through fumigation campaigns for vector control	250

Priority Actions

- * Community awareness campaigns on health promotion and disease prevention
- * Vector control and epidemic prevention through community meetings and awareness-raising at home or through the media



- * Delivery of vector epidemic kits for the identification and elimination of breeding sites
- * Detection and referral of suspected dengue or leptospirosis cases to health centers
- * Importation of mosquito nets
- * Distribution of cleaning kits and mosquito nets
- * Procurement of virtual MHPSS kit
- * Development, reproduction, and dissemination of physical and mental health awareness material in printed and virtual form
- * Provision of Psychological First Aid (PFA) for Affected Individuals, Including Emergency Responders and Community Members



Water, Sanitation And Hygiene

Budget: CHF 53,908

Targeted Persons: 17,000

Indicators

Title	Target
Number of people receiving sodium hypochlorite and training in its use	17,000
Number of families receiving cleaning kits	650
Number of water treatment inputs (filters) delivered	50
Number of jerry cans for household safe water storage distributed	3,850
Number of water purification plants deployed	1

Priority Actions

- * Local purchase and distribution of hygiene kits and water filters
- * Import and distribution of jerrycans
- * Production and distribution of sodium hypochlorite
- * Community awareness-raising (talks, campaigns)
- * Deployment and operation of a water treatment plant in El Oro and Guayas in support of the Ministry of Water and Environment



Protection, Gender And Inclusion

Budget: CHF 5,877

Targeted Persons: 600

Indicators

Title	Target
Number of volunteers trained on the PGI approach - (virtual workshops)	30
Number of people reached by RFL services at points of care	600
Number of people indirectly reached through mass dissemination of key RFL messages with access to multiple languages	8,000

Priority Actions

- * Develop initial instructions for referrals and make safe referrals for identified cases of people from priority groups with specialized care needs to competent entities, whether state or non-governmental, according to the mapping of entities in the provinces of Guayas, Manabí, and El Oro.
- * Implementation of a virtual PGI approach day on referral and safe referrals.
- * Survey of RFL needs in the affected provinces conducted by the technical team of each Provincial Board.
- * Implementation of community awareness actions through the dissemination of preventive measures and delivery of printed material.
- * Massive dissemination campaign of key messages to prevent the breakdown of family ties in several languages and through digital, community, and local advertising media.
- * Activation of the range of RFL services according to the evolution of the context, including search requests, family news, connectivity service, transmission of documents, and care for people in vulnerable situations.



Community Engagement And Accountability

Budget: CHF 4,739

Targeted Persons: 400

Indicators

Title	Target
Number of people directly reached through the implementation of feedback mechanisms (surveys).	400
Number of people reached indirectly through the communication strategy with CEA approach.	10,000

Priority Actions

- * Refresher training on Community Engagement and Accountability (CEA) concepts for the staff of the prioritized Provincial Branches involved in the emergency response.
- * Implementation of feedback mechanisms from and for the community by finalizing distributions or services received from a sample
- * Development of key messages with a CEA focus on the auxiliary role of the state and humanitarian principles



Secretariat Services

Budget: CHF 5,403

Targeted Persons: 0

Indicators

Title	Target
Number of monitoring visits made during the operation	1

Priority Actions

- Monitoring and/or technical support visits conducted



National Society Strengthening

Budget: CHF 95,687

Targeted Persons: 0

Indicators

Title	Target
Lessons Learned Workshop	1
Assisted persons registration system implemented	1

Priority Actions

- * Procurement of security equipment and uniforms for the proper identification of hired personnel and volunteers involved in the operation
- * Hiring of technical staff
- * Follow-up and monitoring of activities
- * Evaluation meetings and presentation of results
- * Lessons learned workshop

About Support Services

How many staff and volunteers will be involved in this operation. Briefly describe their role.

A total of 300 people from the National Society (240 volunteers and 60 paid staff) will be part of this operation in the provinces of El Oro, Guayas, Manabí, and at the National Headquarters at the ERC. All volunteers are covered by a National Society-funded annual insurance plan.

The volunteers and staff at the branches and Headquarters have specialized training in various lines of action, including shelter, cash transfers, basic first aid, emergency health, psychosocial support, water, sanitation and hygiene, restoring family contact, institutional communication, operational security, PMER, and EVIN, among others.

Additionally, to ensure the achievement of the project's established targets, the following professionals will be recruited to support the operation:

- Project Coordinator (100% dedication): The Coordinator will be hired for the entire duration of the operation and will be responsible for guiding both the technical team and the Provincial Branches in implementing the planned activities.

- Administrative and Logistics Officer (100% dedication): This team member will be engaged for the full duration of the project to provide administrative and logistical support from the National Headquarters, particularly in fund management and procurement processes.



- Field Officer (100% dedication, based in El Oro): Given the location of the province to be assisted, situated on the country's southern border, a dedicated staff member is required to implement the project across different emergency sites in coordination with the Provincial Branch. This position is necessary for four months, as this period represents the peak workload at the local level. Additionally, the officer must develop an exit and transition strategy with the Provincial Branch's response team, ensuring a smooth handover of responsibilities during the final two months while collaborating with the National Headquarters team.

- Data Management Officer (National Headquarters, 100% dedication): Accurate data management is essential for effective emergency response, particularly in tracking the provision of humanitarian assistance. This role will finalize the beneficiary registration system, initially developed by the National Society with the support of the PPP, ensuring a reliable record of individuals receiving one or multiple services. Completing this system will enhance future emergency operations by improving beneficiary tracking, facilitating needs assessments, and strengthening coordination across operational sectors. This position is required for one month, as this is the estimated time needed to complete the development of the humanitarian assistance and services module.

- Financial Assistant (50% dedication): A staff member from the Ecuadorian Red Cross (ERC) will be assigned to oversee and ensure the financial monitoring and justification of the project.

If there is procurement, will it be done by National Society or IFRC?

All procurement processes will be carried out by the National Society in accordance with procurement regulations, except for tarpaulins (from the lodging kits), jerrycans, and mosquito nets, which will be requested from the IFRC Regional Office logistics unit, as there are no locally available products of the same quality, and the ones offered do not meet the technical specifications.

How will this operation be monitored?

The activities carried out in the field will be supervised and advised by the National Risk Management Coordinator and the National Response Technician, as well as through the various National Operational Programs at the ERC.

The Planning and Finance Departments will implement a strategy for follow-up, evaluation, and monitoring of activities with biweekly meetings to assess progress and identify deviations between planned and executed activities. This will include the implementation of a monitoring matrix, where compliance with indicators and goals will be programmed on a biweekly basis and reported by those responsible for the technical lines and project coordination. This file will be uploaded for virtual access in real-time. Regarding budget follow-up, we will work with evaluated calendars and a procurement plan to ensure compliance with deadlines and specific items.

The entire intervention will conclude with internal meetings to evaluate the operation.

Please briefly explain the National Societies communication strategy for this operation

Considering the affected population, priority will be given to disseminating clear and concise information, with short and direct messages, to be easily understood by all audiences, including those with a low level of literacy or limited access to technology. To ensure effective and efficient communication in response, different communication channels will be used to effectively reach different audiences:

(1) Social Networks: Information notes, infographics, and audiovisual materials will be published on the Ecuadorian Red Cross social networks to inform the population and the community in general about the situation and the actions being carried out to help those affected, such as the activation of psychosocial support lines, mental health services, restoration of family contact, water and sanitation, and pre-hospital care.

(2) Radio: Radio messages will be broadcast on local and national radio stations to inform the population about the actions being carried out to help those affected. Short and direct messages with clear and concise information will be used to ensure they are easily understood by all audiences.

(3) Audiovisual Material: Audiovisual material will be produced to showcase the work of the Ecuadorian Red Cross at a general level, taking into account the characteristics of inclusion with sign language or adaptation to a native language, especially in indigenous communities.

It is important to consider that communication in emergency situations must be constant and adapted to the evolution of the situation, not only during the execution of the DREF. Therefore, continuous vigilance will be maintained, and communication actions will be adjusted accordingly. The Communications staff at the National Headquarters and the Communications focal points at the Provincial Branches will be responsible for the collection, selection, editing, and subsequent dissemination of information regarding the activities carried out, after a refresher on communication guidelines.



Budget Overview



DREF OPERATION

MDREC027 - Ecuadorian Red Cross Floods

Operating Budget

Planned Operations	395,925
Shelter and Basic Household Items	104,986
Livelihoods	0
Multi-purpose Cash	135,467
Health	90,949
Water, Sanitation & Hygiene	53,908
Protection, Gender and Inclusion	5,877
Education	0
Migration	0
Risk Reduction, Climate Adaptation and Recovery	0
Community Engagement and Accountability	4,739
Environmental Sustainability	0
Enabling Approaches	101,090
Coordination and Partnerships	0
Secretariat Services	5,403
National Society Strengthening	95,687
TOTAL BUDGET	497,015

all amounts in Swiss Francs (CHF)

Internal

11/3/2025

#V2022.01

[Click here to download the budget file](#)



Contact Information

For further information, specifically related to this operation please contact:

National Society contact: Jorge Arteaga, Manager, Essential Areas, jartega@cuzroja.org.ec

IFRC Appeal Manager: Natalia Gomez, Head of Delegation - Acting, Natalia.gtravesedo@ifrc.org

IFRC Project Manager: Julian Perez, Coordinator, Programs and Operations, julian.perez@ifrc.org

IFRC focal point for the emergency: Julian Perez, Coordinator, Programs and Operations, julian.perez@ifrc.org

Media Contact: Susana Arroyo, Manager, Regional Communications, susana.arroyo@ifrc.org

[Click here for the reference](#)

