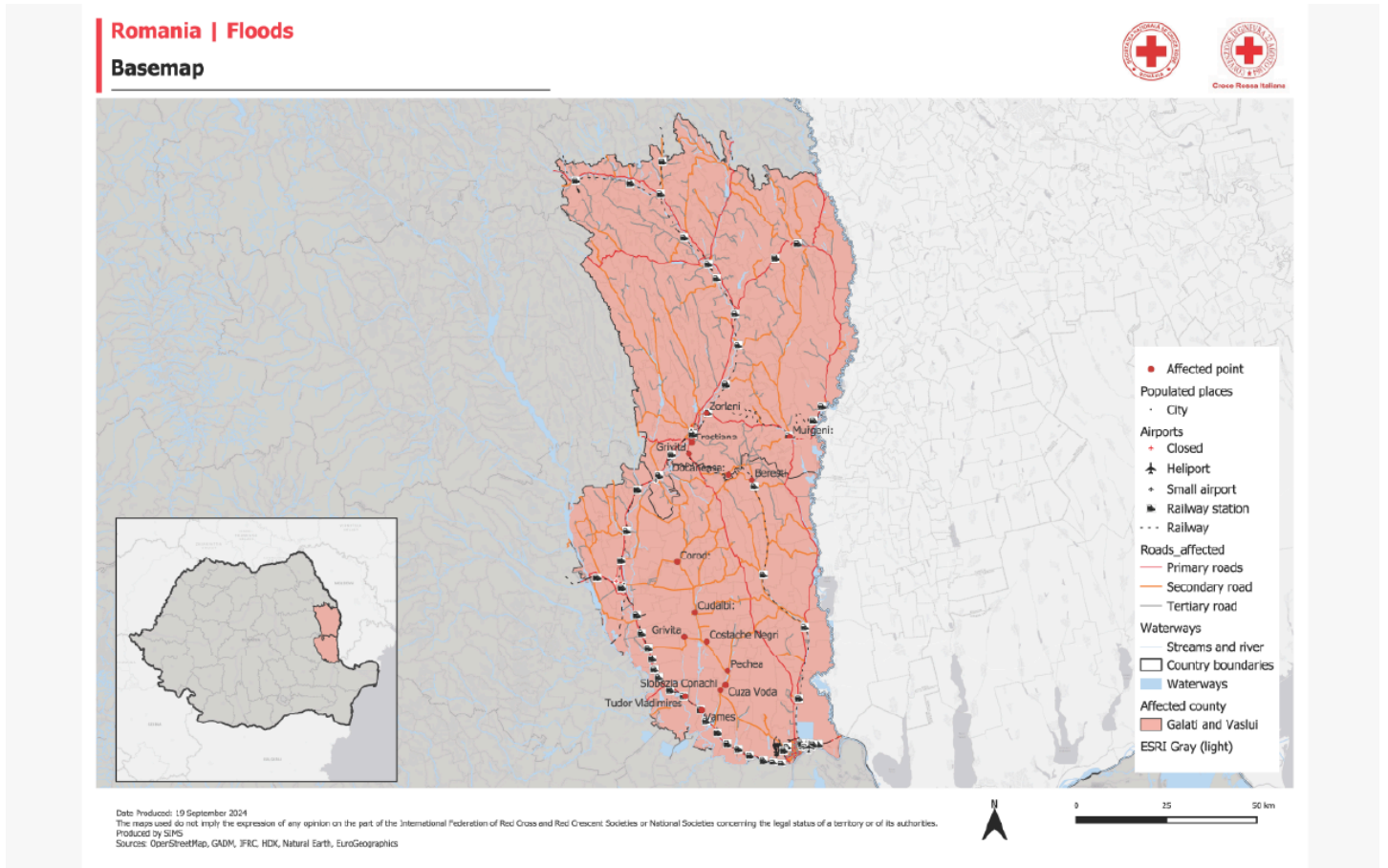




Romanian Red Cross volunteers distributing relief and food items on 15 September 2024 (Source: Romanian Red Cross)

|  |  |  |   |
|--|--|--|---|
| Appeal:<br><b>MDRRO006</b>                           | Total DREF Allocation:<br><b>CHF 465,192</b> | Crisis Category:<br><b>Yellow</b>                  | Hazard:<br><b>Flood</b>                       |
| Glide Number:<br><b>FL-2024-000169-AUT</b>           | People Affected:<br><b>15,000 people</b>     | People Targeted:<br><b>5,000 people</b>            |   |
| Event Onset:<br><b>Sudden</b>                        | Operation Start Date:<br><b>30-09-2024</b>   | New Operational End Date:<br><b>31-03-2025</b>     | Total Operating Timeframe:<br><b>6 months</b> |
| Reporting Timeframe Start Date:<br><b>30-09-2024</b> |  | Reporting Timeframe End Date:<br><b>20-02-2025</b> |   |
| Additional Allocation Requested:<br><b>-</b>         |  | Targeted Areas:<br><b>Galati, Vaslui</b>           |   |

# Description of the Event



Romanian 2024 Floods - Galati and Vaslui (Source: Italian Red Cross)

## Date of event

14-09-2024

## What happened, where and when?

The extensive floods across Central and Eastern Europe, triggered by Storm Boris, have caused widespread devastation in several countries, including Romania, Poland, the Czech Republic, Hungary, Slovakia, and parts of Austria. In Romania, the storm unleashed torrential rains on 14 September 2024, severely impacting the counties of Galați and Vaslui. Within just 24 hours, the region was inundated with over 150 mm of rain per square meter, resulting in flash floods that swept through multiple areas, causing significant damage to homes, infrastructure, and livelihoods.

Galați suffered the most severe impact, with floodwaters rising to depths of 1.5 to 2 meters in localities such as Cudalbi, Cuza-Vodă, Pechea, Slobozia-Conachi, Tudor Vladimirescu, and Costache Negri. In Vaslui, the southern localities of Zorleni, Grivița, and Trestiana bore the brunt of the disaster.

The floods caused extensive destruction, severely damaging critical infrastructure, including roads, bridges, power systems, and schools. More than 6,000 homes were damaged or destroyed across the two counties. Approximately 400 individuals remain displaced and are being housed in temporary shelters provided by authorities. Tragically, the disaster claimed seven lives.



The Romanian Red Cross Galați branch has been supporting flood affected communities from day one by distributing drinking water and food. Source: Filip Scarlat/Romanian Red Cross



Romanian Red Cross Galați branch staff and volunteers have been responding to the immediate needs of the flood-affected populations. Source: Romanian Red Cross

## Scope and Scale

Starting from 14 September 2024, extreme flooding struck Galați and Vaslui counties due to unprecedented rainfall exceeding predictions by far: Vaslui recorded 165 mm of rain, Galați saw 148 mm within 24 hours, compared to the 60-80 mm predicted by the meteorological service, providing the basis for preparations of competent authorities. Factual warning and measures have therefore become effective with a short lead time of 24 hours only.

Communities in low-lying rural areas like Pechea, Costache Negri, and Cuza Vodă were hit hardest. Over 300 kilometers of roads were destroyed or blocked by landslides, isolating entire communities and delaying rescue efforts. Key routes became impassable, and bridges were washed away, further cutting off access. Power grids and water systems were heavily damaged, leaving many without electricity or clean water.

Although Galați had experienced significant flooding in 2013, which affected about 8,000 people and 3,000 households, a flood of this scale was unexpected. Vaslui, meanwhile, had never faced such extensive flooding.

The sheer magnitude of the disaster overwhelmed local preparedness efforts, including newly implemented contingency plans by the Red Cross branches. The extreme nature of the event exceeded the capacity of responders, especially in remote areas.

Although the floodwaters have receded, the aftermath continues to pose significant challenges. In the weeks and months following the disaster, immediate needs for food, essential supplies, and services persisted, underscoring the ongoing vulnerability of affected communities. The restoration of critical infrastructure, including power and water supplies, roads, bridges, and schools, remains a long-term endeavor, expected to take months or even years to complete. Many damaged homes are still uninhabitable, requiring extensive repairs, while the reconstruction of destroyed houses or relocation of affected individuals to safer areas will demand even more time. Additionally, rural residents who lost livestock and crops during the floods face severe economic hardships, as these losses have deprived them of their primary sources of income.

Vulnerable groups, including older people, large families, people living with disabilities, and those who have lost farming livelihoods, are especially at risk during both the response and recovery phases.

## Source Information

| Source Name   | Source Link   |
|---|---|
| 1. General Inspectorate for Emergency Situations - Measures for affected population | <a href="https://igsu.ro/Media/Stire/5138">https://igsu.ro/Media/Stire/5138</a> |
| 2. General Inspectorate for Emergency Situations - Latest hidrological effects      | <a href="https://igsu.ro/Media/Stire/5141">https://igsu.ro/Media/Stire/5141</a> |

## Summary of Changes

|   |     |
|---|-----|
| Are you changing the timeframe of the operation         | No  |
| Are you changing the operational strategy               | No  |
| Are you changing the target population of the operation | No  |
| Are you changing the geographical location              | No  |
| Are you making changes to the budget                    | Yes |
| Is this a request for a second allocation               | No  |
| Has the forecasted event materialize?                   | No  |

### Please explain the summary of changes and justification:

The changes to the budget are due to the overestimation of warehousing rent and of product prices, necessitating the reallocation of remaining funds from the Shelter and Water, Sanitation, and Hygiene (WASH) sections. After procurement, remaining funds were identified in product lines such as food items, rubber boots, shampoo, toothpaste, detergent, disinfectant, cleaner, wood, and blankets. However, shovels exceeded the proposed budget, requiring small reallocation to cover the difference between the estimated and actual costs.

The outstanding needs of the affected population have been analysed through the local branch, with additional support from HQ personnel during ongoing distributions. This initial assessment has also been reevaluated. Based on the analyses, the identified needs requiring reallocation of the remaining budget include 2,500 bedding sets, 200 sleeping bags, 140 solid-fuel stoves and 7 industrial dehumidifiers. The bedding sets and sleeping bags are needed due to harsh winter conditions, much colder than anticipated, with the cold front predicted to last until mid-to-late March 2025. The additional solid-fuel stoves are for distribution, in order to reach more people in need in Galați county who will receive wood for heating. The industrial dehumidifiers, not for distribution, will be used in rotation by households continue to struggle with water infiltration and insufficiently dried homes.

The estimated cost of the Lessons Learned Workshop (LLW) is CHF 11,000, covering airfare for IFRC participants, accommodations for 15 attendees, meals, meeting room rental, and internal transportation. The workshop will include approximately 25 participants, comprising staff and volunteers from the branch, HQ, other supporting branches, and potentially IFRC personnel from the Romania Country Office. Of the 25 participants, only about 15 will require accommodations, as the remaining attendees will be local volunteers and branch staff.

The ongoing distributions provide food and water to older individuals and vulnerable families in affected villages, as they are unable to purchase most food locally or travel long distances, particularly with temperatures consistently below 0°C. Hygiene products, including toothpaste, toothbrushes, solid soap, and shampoo, are also distributed to the same groups, as well as to schoolchildren studying in temporary or partially reconstructed schools. Additionally, specific in-kind aid is distributed based on individual needs, such as school supplies for affected children, appliances for older people and people living with disabilities, and other items, depending on the in-kind donations received from donor companies and needs identified on a smaller scale or in individual cases.

## Current National Society Actions

### Start date of National Society actions

14-09-2024

#### Livelihoods And Basic Needs

In response to the basic needs of those affected by the floods, the National Society acted swiftly to provide food assistance. From the first day of the emergency, the Galați and

|   |   |
|---|---|
|   | <p>Vaslui branches distributed food products with essential items such as cooking oil, rice, canned meat, and waffles. On 18 September 2024, the Romanian Red Cross Logistics and Disaster Response departments facilitated the delivery of two trucks of in-kind humanitarian aid, further supporting the affected communities in meeting their immediate nutritional and shelter needs with food items, sleeping bags, blankets, and rubber boots. In total, in-kind assistance to address basic needs has been distributed to 1,791 households in Galați and 431 households in Vaslui.</p>   |
| <p><b>Water, Sanitation And Hygiene</b></p>   | <p>From the onset of the emergency, the National Society has rapidly responded to Water, Sanitation, and Hygiene (WASH) needs, ensuring access to clean drinking water and hygiene products. Bottled water distribution began on day one of the event, with over 2,280 households in Galați and 330 households in Vaslui being assisted with clean water. This rapid response was facilitated by mobilizing branch emergency funds, support from other branches, and donations from private companies, demonstrating an effective and collaborative effort to meet critical needs.</p> <p>Additionally, hygiene products such as soap, wet wipes, and toothpaste were distributed to over 1,391 households in Galați and 192 in Vaslui, addressing immediate sanitation needs.</p>  |
| <p><b>National Society Readiness</b></p>      | <p>The RoRC Headquarters has established a six-month Operational Plan to ensure efficient, harmonized assistance, prioritizing the most vulnerable populations while reinforcing the capacity of affected branches.</p> <p>As part of its expanded response, the Romanian Red Cross is scaling up DREF-supported relief and winter assistance while integrating Mental Health and Psychosocial Support (MHPSS) services. A key component is the establishment of an MHPSS helpline, designed to provide emotional support to individuals in rural areas where stigma often limits access to in-person services, as well as to people with family members in the affected regions. The helpline also serves as a platform to disseminate information on preventing water-borne diseases, promoting public health, and raising awareness.</p> <p>RoRC has committed to funding the MHPSS, First Aid, and WASH components of the response. Meanwhile, broader intervention efforts, including relief distributions and infrastructure restoration, will be supported by domestic donors and in-kind contributions, ensuring a comprehensive and well-rounded approach to addressing the needs of flood-affected communities.</p> |
| <p><b>Assessment</b></p>                      | <p>The branches in Galați and Vaslui have been continuously assessing the situation from the onset of the events, with staff and volunteers regularly monitoring conditions in the field and reporting back to HQ.</p> <p>To further support these activities, the IFRC and RoRC formed two rapid assessment teams which deployed to Vaslui and Galați counties (20 – 21 September 2024), enhancing initial assessment information provided by branches and the authorities.</p>  |
| <p><b>Resource Mobilization</b></p>           | <p>At the national level, the Romanian Red Cross promptly launched a fundraising campaign on the afternoon of 14 September 2024, leveraging its Fundraising and Communications departments to mobilize support. By 23 September 2024, the campaign had successfully raised approximately EUR 100,000 through a combination of individual donations and contributions from corporate partners, demonstrating strong community and organizational support for the flood response efforts.</p> <p>As of the 31st of December, the RoRC raised 4,162,044.10 RON (785,959 CHF), of which 1,025,590.70 RON (193,672 CHF) from individuals through the fundraiser campaign and 3,136,453.40 RON (592,287 CHF) from companies. Moreover, companies have donated in-kind products for distribution of a total value of 877,920.00 RON (16,579 CHF). The RON-CHF exchange rate used was the one from the 31st of December.</p>  |
| <p><b>Activation Of Contingency Plans</b></p> | <p>The recently established contingency plans for the Romanian Red Cross branches have significantly enhanced their emergency response capabilities. County-level risk assessments had previously identified floods as the primary threat in Galați and the</p>   |



|                                    |   |
|------------------------------------|---|
|                                    | <p>second-most significant risk in Vaslui, following drought. These plans proved instrumental during the response, as most of the outlined intervention steps were effectively followed. They guided both branches in implementing response activities and facilitated seamless communication with the Emergency Operations Centre, ensuring a coordinated and efficient operation.</p>   |
| <p><b>National Society EOC</b></p> | <p>The Romanian Red Cross Emergency Operations Centre (EOC), established in March 2024, played a key role in coordinating the flood emergency response. It managed the Romanian Red Cross (RoRC) and IFRC activities while gathering critical information from national authorities. From 14 September, the EOC was in exchange with the national authorities in charge of relief efforts, and prioritised response to the identified needs of the affected population. This coordination ensured the RoRC alignment with authority efforts, enhancing the effectiveness of the response in affected areas.</p> <p>Operational Update (as of 30 November 2024)</p> <p>From the onset of the disaster, the Emergency Operations Centre has been actively engaged in the response efforts. As of the latest update, the EOC has maintained continuous communication with the affected branches, centralising and disseminating relevant information to headquarters (HQ) departments, as well as to other local branches. To support monitoring and assist the procurement team in replenishing distributed goods, the EOC has centralised all relevant information and documentation from HQ and the involved branches. Additionally, a team was dispatched to Galati and Vaslui to deliver equipment and provide training to staff and volunteers, ensuring efficient reporting of distributed goods.</p> |

## IFRC Network Actions Related To The Current Event

|  |   |
|--|---|
| <p><b>Secretariat</b></p>                      | <p>The IFRC has an established presence in Romania’s capital, primarily due to its involvement in the “Ukraine and Impacted Countries” Operation. The IFRC’s in-country delegates are covering critical areas such as National Society Development (NSD), Planning, Monitoring, Evaluation, Reporting (PMER), Admin, Finance, MHPSS, and Disaster Management (DM). Romania is also the IFRC Country Cluster Delegation in Warsaw, covering Romania, Poland, Moldova, the Czech Republic, the Baltic countries (Estonia, Latvia, and Lithuania), and from 1 December 2024, Slovakia.</p> <p>The IFRC in-country presence has enabled the Romanian Red Cross to rapidly scale up its support to flood-affected communities. For the emergency, an Operations Coordinator, specializing in disaster management, has been deployed to assist with the rapid assessment, reinforcing the efforts of the Romanian Red Cross and providing vital technical expertise. The IFRC has been integral in coordinating the immediate response, including assessments, resource mobilization, and field operations.</p> |
| <p><b>Participating National Societies</b></p> | <p>The Swedish Red Cross is present in the country and has offered financial support.</p> <p>French, Italian and British Red Cross are also present in the country, currently considering their capabilities to contribute to responding to the emergency.</p> <p>As of January 2025, no National Society ended up providing support for the floods.</p>  |

## ICRC Actions Related To The Current Event

The International Committee of the Red Cross (ICRC) is present in country, however, has not been actively involved in the response. The ICRC can offer support with Restoring Family Links (RFL) services as required. No respective needs have been identified during the response.

As of January 2025, the ICRC has not been involved in the intervention.



# Other Actors Actions Related To The Current Event

|   |  |
|---|--|
| Government has requested international assistance | Yes  |
| National authorities                              | <p>The national and local authorities mobilized substantial resources in response to the flood disaster. In Galați, local authorities were active from the onset of the emergency, evacuating residents, draining excess water, and deploying over 1,000 firefighters to assist with rescue and recovery efforts. Six temporary camps, each with a capacity of 200 people, were established in Galați, Vaslui, and Iași counties to shelter people displaced by the floods.</p> <p>The Ministry of Internal Affairs, through the Inspectorate of Emergency Situations, has been coordinating with the Ministry of National Defence. Specialized teams were also sent to assess damaged dikes, while neighbouring counties aided in the hardest-hit areas. The State Inspectorate in Constructions deployed experts to assess all affected buildings and houses.</p> <p>National authorities focused on restoring critical infrastructure, setting up shelter capacity, evacuating water, cleaning homes, clearing access routes, recovering vehicles, and removing animal carcasses.</p> <p>Also, immediate relief assistance of EUR 2,000 EUR per household has been approved from national reserves to assist the rehabilitation of affected households.</p> <p>Operational Update of 30 November 2024:<br/>The Romanian government is set to receive EUR 1.5 billion from the European Union Cohesion Fund to aid in rebuilding infrastructure and homes damaged by severe flooding, as confirmed by the government. Details about the specific projects or timelines for the deployment of these funds have not been provided as of this update.</p> |
| UN or other actors                                | <p>Several non-governmental organisations (NGOs), including Habitat for Humanity, Save the Children, ADRA, and smaller humanitarian NGOs, have been involved in the emergency response. Their contributions have primarily focused on localized support and offering basic assistance to affected communities.</p> <p>Operational Update of 30 November 2024:<br/>NGOs such as Save the Children have focused their future activities on offering social vouchers to 2,000 children from various counties in Galați, enabling them to purchase clothing and winter equipment. UNICEF has initiated a funding campaign aimed at supporting children in Costache Negri, Galați, by ensuring access to essential goods, safe education, school supplies, and family support.</p>  |

## Are there major coordination mechanism in place?

Coordination mechanisms at both local and national levels were activated through the County Emergency Committees, in which the local branches of the RoRC are active members. These committees officially requested the intervention of the RoRC branches and coordinated with local municipalities to identify families in need of assistance.

In accordance with Law 557/2016, the RoRC operates in a secondary, supportive capacity. This legislative framework positions the RoRC to assist and collaborate closely with lead authorities, such as the Inspectorate for Emergency Situations (IGSU), which is the primary agency responsible for managing disaster interventions.

## Needs (Gaps) Identified



### Shelter Housing And Settlements

The flooding caused by Storm Boris has severely damaged homes and infrastructure, displacing many families and creating an urgent need for essential shelter and winter relief items. Around 6,000 houses have been partially or completely destroyed, leaving them



uninhabitable, either temporarily or permanently. Authorities have provided container shelters for those who lost their homes, with 213 people currently living in these temporary accommodations as of 23 September 2024. The remaining displaced individuals are staying with family or friends

Affected populations staying with hosts and those living in their own affected homes require blankets, mattresses, and other essential items to ensure basic comfort and warmth.

Operational Update No. 2 (as of 20 February 2025):

Extreme winter conditions have highlighted the need for additional support for affected communities to ensure their safety and well-being. Providing heating solutions, such as solid fuel stoves and heaters are essential to help families endure the harsh conditions and maintain adequate warmth in their homes.



## Livelihoods And Basic Needs

Support for livelihoods and basic needs has been critical, as the affected communities are predominantly agricultural. The floods have destroyed crops and livestock, which many families rely on for their primary source of income. Without the means to replace these losses, affected households face severe financial hardship.

Beyond the immediate loss of income, the destruction of farmland, tools, and equipment further hampers their ability to recover in the long term. Additionally, farmers are facing challenges in preparing for the next planting season due to waterlogged fields and damaged irrigation systems. Livelihood recovery will require the provision of seeds, farming tools, and livestock, along with financial assistance to restore agricultural productivity. In parallel, vocational training and alternative income-generating activities could help diversify income sources, making these communities more resilient to future disasters.

Immediate cash assistance and food security support will also be essential to meet basic needs until families can rebuild their livelihoods. Special attention should be given to vulnerable groups such as small-scale farmers, day laborers, and those already living in poverty, as they are particularly at risk of falling deeper into financial insecurity.



## Water, Sanitation And Hygiene

The affected communities have been facing significant health risks due to inadequate sanitation and waste management following the floods.

The flooding has severely disrupted sanitation systems, elevating the risk of disease outbreaks. To uphold hygiene standards in temporary accommodations, families need hygiene parcels that include essential items such as soap, sanitary products, and disinfectants. Maintaining personal hygiene is essential in crowded temporary shelters to prevent the spread of infections and protect public health.

As floodwaters recede and debris is cleared, families will begin the process of cleaning and sanitizing their homes to make them livable again. To support this effort, cleaning supplies like disinfectants, mops, and buckets are necessary for restoring safe living conditions.

In summary, immediate attention to WASH needs is vital to safeguard health and ensure a safe environment as communities begin to recover.

## Any identified gaps/limitations in the assessment

The initial branch level and rapid HQ/IFRC assessment provided a snapshot on the situation and will require additional primary and secondary data to provide comprehensive information on the situation, specifically on recovery needs and efforts of actors. RoRC keeps coordinating with concerned authorities to ensure information exchange.

# Operational Strategy

## Overall objective of the operation

The overall objective of the DREF operation is to support 5,000 people in need affected by the recent flood disaster, by providing immediate humanitarian aid, through the implementation of actions under shelter, livelihoods, and WASH in the counties of Galați and



Vaslui.

Operational Update as of 30 November 2024:

The operation, originally planned for a three-month timeframe, has been extended to six months following an assessment of delays in implementation and the identification of outstanding needs among the targeted 5,000 people. This extension is particularly crucial given the approaching winter period, ensuring that critical support reaches those affected in a timely and comprehensive manner.

Operational Update as of 20 February 2025:

The overestimation of certain product prices and warehousing rent has enabled the reallocation of remaining funds. In response to the extreme winter conditions, additional needs for heating solutions have emerged. The Romanian Red Cross has increased the provision of bedding sets, sleeping bags, solid-fuel stoves, and industrial dehumidifiers to support vulnerable flood-affected populations, particularly older adults and individuals living with disabilities who continue to require assistance.

See further information under "Summary of changes" of this DREF Operational Update No. 1 and No. 2.

## Operation strategy rationale

To address the needs of the targeted population, the Romanian Red Cross has been implementing a series of coordinated activities designed to provide immediate relief and support the recovery of communities affected by the floods. Central to this strategy is the engagement of local communities in the recovery process and a commitment to continuous accountability, ensuring that relief efforts are tailored to their specific needs. Some of the key activities include delivering essential aid such as clean drinking water, food, and shelter as well as repairing infrastructure and restoring vital services. It is important to note that not all of these activities are funded through the DREF; some are supported by other funding sources.

This DREF intervention specifically aims to complement the relief efforts of local authorities, reinforcing the RoRC's auxiliary role and maximizing the implementation capacity of the National Society. Additionally, it provides a solid foundation for scaling up efforts with domestic funding.

The rationale for this approach encompasses several key elements including the distribution of food, and hygiene products to individuals and families who have been evacuated or are without access to basic items, at initial stage. This is followed by providing cleaning products, and subsequently wood-fuelled stoves/heaters alongside firewood to targeted groups, both for cooking and heating in the winter period, as detailed below:

### SHELTER:

Through this line of intervention, at least 5,000 people will be reached.

As winter approaches in Romania, the demand for heating will increase, leading to higher costs for both wood and other heating resources. The nature of these houses exacerbates energy inefficiency, necessitating more fuel to maintain adequate indoor temperatures. Consequently, the combination of inadequate insulation, heightened heating demands, and rising fuel prices contributes to the overall increase in heating costs.

The shelter intervention integrates the distribution of basic needs items (blankets, rubber boots, bedding, and sleeping bags) and solid fuel stoves/heaters and firewood in preparation of the winter period - which have been identified as priority needs in the RoRC / IFRC rapid assessment conducted.

All firewood will be purchased from authorized vendors, which have been certified by the authorities regarding the provenance of the wood.

Furthermore, the heating-related items will be acquired only after the initial aftermath has passed, ensuring that the individual storage areas will be adequate.

In kind assistance has been prioritized over Cash and Voucher Assistance (CVA) modalities due to accessibility (no adequate suppliers are situated in the rural areas affected) and the limited NS capacity to implement CVA programming.

### LIVELIHOODS:

Through this line of intervention, at least 5,000 people will be reached.

The livelihoods intervention integrates distribution of durable food items, such as canned fish, canned meat, and non-perishable items.

### WATER, SANITATION AND HYGIENE (WASH):

Through this line of intervention, at least 2,000 people will be reached.



The WASH intervention integrates the distribution of hygiene products, such as shampoo, soap, toothpaste, and toothbrushes, as well as cleaning materials to support with cleaning households in affected areas.

Logistical efforts will include setting up a temporary warehouse and respective staff in Galați and Vaslui for the storage and distribution of aid.

## Targeting Strategy

### Who will be targeted through this operation?

The total targeted population will include 5,000 people.

The operation prioritizes groups living in vulnerable situations in the affected villages in the Counties of Galati and Vaslui, including:

- older persons (60+);
- single women;
- households with one or more persons living with disabilities;
- single-parent households; and
- households with three or more children.

The targeted population was selected based on their level of impact from the floods, with a focus on individuals displaced from their homes, those whose properties were severely damaged or destroyed, and people facing significant disruptions to their livelihoods.

Additionally, people experiencing loss of income due to damaged agricultural land or businesses, and those in temporary shelters with limited access to clean water, electricity, or healthcare have been prioritized for assistance.

The disaggregation estimations for the targeted population were made using the demographic distributions in the respective counties.

### Explain the selection criteria for the targeted population

The selection criteria prioritizes those in the most flood-affected areas, particularly in low-lying regions near the rivers.

Information has been collected by the branch during assessments of individual needs, with volunteers actively engaged in the distribution efforts.

Affected population will be prioritized based the criteria above.

Information is cross-checked with national ID's and if necessary, through the authorities.

## Total Targeted Population

|                           |       |                                      |      |
|---------------------------|-------|--------------------------------------|------|
| Women                     | 2,040 | Rural                                | 100% |
| Girls (under 18)          | 440   | Urban                                | 0%   |
| Men                       | 2,070 | People with disabilities (estimated) | 10%  |
| Boys (under 18)           | 450   |                                      |      |
| Total targeted population | 5,000 |                                      |      |

## Risk and Security Considerations

Please indicate about potential operation risk for this operations and mitigation actions

| Risk | Mitigation action |
|------|-------------------|
|------|-------------------|



|  |   |
|--|---|
| <p>Location Risk</p> <p>Flooding due to existing or future weather conditions.</p>   | <p>All locations for temporary warehouses are being selected and have taken into account the future risk for flooding and will be leased in non-risk areas.</p> <p>Operational Update No. 2 (as of 20 February 2025):<br/>The floodwaters have receded, ensuring the safety of all personnel and stakeholders. The warehouse is located in a flood-safe area.</p>   |
| <p>Injuries of field personnel</p> <p>There is a risk of injury for responding staff and volunteers due to weather-related events and malfunctioning infrastructure (traffic) in the operational areas.</p>                          | <p>The RoRC will take precautionary measures, including monitoring of weather forecast and related early warning, provision of Personal Protective Equipment (PPE), fixed check-ins with field teams, and contingency planning (see section on security and safety for details.)</p> <p>Operational Update No. 2 (as of 20 February 2025):<br/>The RoRC has briefed its personnel on the risks present in the area and provided them with PPE from the onset of the disaster and response operation.</p>  |
| <p>Limited Human Resources</p> <p>Insufficient personnel to manage distributions and warehousing could hinder timely and effective operations.</p>   | <p>Allocate adequate financial resources to cover personnel costs, ensuring sufficient human resource is in place to manage logistics and distribution.</p> <p>Operational Update No. 2 (as of 20 February 2025):<br/>To address this risk, four additional staff members have been hired for the Galați branch. They are assisting with warehousing, in-kind distributions, and reporting processes to HQ.</p>   |
| <p>Coordination and Communication Gaps</p> <p>Gaps in communication and coordination with local authorities or communities may delay interventions or lead to gaps in service delivery.</p>  | <p>Ensure contact information from the authorities are shared, to ensure timely communication.</p> <p>Establish clear lines of communication with local stakeholders, including integration in coordination for, regular exchange and information sharing, thereby ensuring the coordination of efforts.</p> <p>Operational Update No. 2 (as of 20 February 2025):<br/>Both local branches have established direct communication channels with local authorities and the EOC, ensuring efficient coordination with affected communities and the HQ.</p> |
| <p>Logistical Challenges (transportation - warehousing)</p> <p>Existing capacity for storing and transporting essential goods like food, water, and hygiene materials is overtaxed and could lead to delays in aid distribution.</p> | <p>Temporarily increase storage capacity by renting suitable warehouses. Deploy transport vehicles from neighbouring branches or headquarters to compensate for the increase of logistical demand.</p> <p>Operational Update No. 2 (as of 20 February 2025):<br/>Currently, the HQ is renting a suitable warehouse in the region to facilitate in-kind distributions. Additionally, the HQ has provided a transport van to the Galați branch, which has been actively supporting the response efforts since September 2024.</p>                         |

**Please indicate any security and safety concerns for this operation**

Throughout the emergency response operation, the Romanian Red Cross continues to ensure that all staff members and volunteers are equipped with appropriate PPE. Each delegation is regularly contacted by the Emergency Operations Centre for safety updates and reporting purposes. Emergency response teams are kept informed of areas where the risks of flooding, landslides, or other hazards remain high. Additionally, alternative routes and evacuation plans are being developed and shared with responders in a timely manner to minimize risks and enhance safety.



Has the child safeguarding risk analysis assessment been completed?

No

## Planned Intervention



### Shelter Housing And Settlements

**Budget:** CHF 330,396

**Targeted Persons:** 5,000

#### Indicators

| Title  | Target | Actual |
|--|--------|--------|
| # of households receiving shelter assistance | 2,000  | 2,415  |

#### Progress Towards Outcome

Further details on the impact and number of people reached will be provided in the DREF Final Report.

Operational Update No. 2 of 20 February 2025:

The outstanding needs of the affected population have been assessed through the local branch, with support from HQ personnel during ongoing distributions. The initial assessment has also been re-evaluated. Based on both analyses, the identified needs requiring the reallocation of the remaining budget include 4,500 bedding sets, 200 sleeping bags, and 100 solid-fuel stoves. The bedding sets and sleeping bags are necessary due to the severe winter conditions, much colder than anticipated, with the cold front expected to last until mid-to-late March 2025. The additional solid-fuel stoves will be distributed to reach more people in need in Galați County, who will receive wood for heating.

Bedding items—including blankets, sleeping bags, duvets, bed sheets, and pillows—totaled 6,892 distributed items, benefiting 2,208 households in Galați and 207 households in Vaslui. These provisions provided essential comfort and security during a period of significant hardship.

The indicator has been updated from "# of people receiving shelter assistance" to "# of households receiving shelter assistance," as it is not possible to provide the number of individuals, similar to other aid categories. Consequently, the target shifted from 5,000 people to 2,000 households.

With the surplus funds resulting from overestimated prices after procurement, plans are in place to acquire seven industrial-grade dehumidifiers for the warehouse. These will be distributed temporarily, remaining with each household as long as necessary for their operation, before being passed on to the next household.



### Livelihoods And Basic Needs

**Budget:** CHF 17,357

**Targeted Persons:** 5,000

#### Indicators

| Title                                     | Target | Actual |
|---|--------|--------|
| # of households receiving food assistance | 1,999  | 3,364  |

## Progress Towards Outcome

Operational Update of 30 November 2024:

Over the course of the response, the NS distributed a total of 51,145 units of perishable and non-perishable food products to 2,486 households in Galați and 14,364 units to 878 households in Vaslui.

In addition to food, the Galați branch, supported by neighbouring branches and generous donations from local and national partners, distributed 7,182 items tailored to the needs of local communities. These items included glasses, mugs, furniture, new clothes, footwear, school supplies, and other essential goods, directly addressing the diverse challenges faced by households in the region. Further details on the impact and number of people reached will be provided in the subsequent reports.

Operational Update of 20 February 2025:

As the initial distribution was conducted through the town halls of the affected villages rather than directly to beneficiaries, the distribution lists provided by the mayor's office specified households, not individuals.

The indicator has been updated from "# of people receiving food assistance" to "# of households receiving food assistance," as it is not possible to provide the number of individuals, similar to other categories of aid. Consequently, the target has shifted from 5,000 people to 2,000 households.



## Water, Sanitation And Hygiene

**Budget:** CHF 42,425

**Targeted Persons:** 2,000

### Indicators

| Title                                     | Target | Actual |
|---|--------|--------|
| # of households receiving WASH assistance | 2,000  | 3,528  |

## Progress Towards Outcome

Operational Update No. 1 of 30 November 2024:

Building on the initial effort, the NS significantly expanded its reach and impact over the following period.

A total of 43,595 liters of water has been distributed, supporting 2,670 households in Galați and 444 households in Vaslui. Simultaneously, 17,794 hygiene products - including hand soap, towels, toilet paper, shampoo, shower gels, toothpaste, toothbrushes and others - were distributed to 2,027 households in Galați and 495 households in Vaslui. These provisions played a crucial role in meeting the sanitation and hygiene needs of affected communities, especially those that are still living in containers.

Further details on the impact and number of people reached will be provided in the subsequent reports.

Operational Update No 2. of 20 February 2025:

Since the initial distribution was conducted through the town halls of the affected villages rather than directly to affected individuals, the distribution lists provided by the mayor's office specified households rather than individuals. As of this update, the number of families reached in Vaslui is 444 (as further response was not necessary, given that the communities were less impacted by the flooding compared to other counties), and in Galați, 3,084 families have been reached, with additional families identified. Most families in Galați that received WASH assistance did so across multiple distributions based on their evolving needs, and the most affected and vulnerable continue to receive WASH support as they are unable to acquire these resources themselves.

The indicator has been updated from "# of people receiving WASH assistance" to "# of households receiving WASH assistance," as the number of individuals cannot be accurately provided, similar to other categories of aid. Consequently, the target shifted from 5,000 people to 2,000 households.





## Secretariat Services

Budget: CHF 14,058

Targeted Persons: 1

### Indicators

| Title   | Target | Actual |
|---|--------|--------|
| # of surge personnel deployed to provide support in the operation | 1      | 1      |

### Progress Towards Outcome

Operational Update No. 1 of 30 November 2024:

The IFRC deployed an Operations Manager from September to October 2024 to support the DREF application process and conduct needs assessments. Since October 2024, an Operations Coordinator (Ops Co) has been leading all IFRC systematic procedures and coordinating with the National Society to ensure the smooth implementation of the DREF operation.

From 18 to 22 November 2024, the Ops Co visited Romania, including a field visit to the Galați branch, one of the most affected areas in the region. Continuous communication and support from the IFRC team including the country office is ongoing. The current Ops Co will continue to support the operation for its entire duration.

Operational Update No. 2 of 20 February 2025:

The IFRC Operations Coordinator continues to assist the Romanian Red Cross with the implementation of the operation, including revising the budget to address outstanding needs. Additionally, significant support is being provided for organizing the Lessons Learned Workshop, scheduled to take place at the Galați branch in mid-March 2025. The workshop will review challenges and lessons learned to inform future DREF operations.



## National Society Strengthening

Budget: CHF 60,956

Targeted Persons: 100

### Indicators

| Title                                     | Target | Actual |
|---|--------|--------|
| # of volunteers involved in the operation | 100    | 113    |

### Progress Towards Outcome

Operational Update No 1. of 30 November 2024:

In light of the timeframe extension of the operation until 31 March 2024, a Lessons Learned Workshop is planned to take place in February 2025 to gather operational learning to improve future operations.

Further details on the impact and number of people reached will be provided in the subsequent reports.

Operational Update No. 2 of 20 February 2025:

A warehouse is currently being rented in Galați County, staffed by four warehouse personnel who also support the branch with distribution as needed. The RoRC HQ assists the branches with temporary storage for goods before distribution at the central warehouse, preventing overcrowding in local storage and streamlining the organization and distribution process. Additionally, the RoRC



coordinates with donors for transportation of donations and other necessary processes as requested by the branch.

A total of 113 volunteers were involved, with most mobilized by multiple branches. The budget accounted for a maximum of 100 volunteers to be covered by insurance, considering that some may already have existing coverage. As a result, the insurance list included 87 names, with the remaining 26 volunteers already insured.

## About Support Services

### How many staff and volunteers will be involved in this operation. Briefly describe their role.

About 30 staff and at least 200 volunteers from multiple RoRC branches and headquarters will be involved in the duration of the operation. Some volunteers already have insurance. If needed, additional insurance will be setup from the DREF budget.

Their roles will vary depending on the experience and location: local staff and volunteers will be involved in distributions, first point of contact with affected population, and organising incoming aid in the field, while staff and volunteers in other branches will serve as support staff to the branches most involved.

Headquarters staff will assist the local branches with logistics, organising and management support, both in the field and remote.

Operational Update No. 2 of 20 February 2025:

During the operation, 113 volunteers and 34 staff members participated in the Galați flood relief effort. As mentioned earlier, their roles and responsibilities were allocated based on their areas of expertise. Local volunteers and staff concentrated on distribution efforts, while HQ members supported the reporting of the intervention. Several field visits were conducted by various HQ departments, including Communication, Logistics, EOC, and the General Director, to assess the situation and provide effective support.

### Will surge personnel be deployed? Please provide the role profile needed.

A roving IFRC Operations Coordinator for the Central and Eastern Europe Flood Responses in Romania, Poland, and the Czech Republic visited the Romanian Red Cross from 18-22 November 2024. The support of the IFRC Operations Coordinator has since been extended from three months to six months, allowing for continued assistance in the implementation of the operation. This includes coordination with the IFRC Project Manager and the IFRC Regional DREF Focal Point. Additionally, the Operations Coordinator is providing further support in organizing the Lessons Learned Workshop and will also participate as one of the attendees.

### If there is procurement, will it be done by National Society or IFRC?

All procurements (both for replenishment of existing stocks, and for new acquisitions) will be carried out by the RoRC Procurement department as per internal logistics procedures, and in line with IFRC procurement procedures and local law.

Warehousing and distribution costs, both for items already distributed as well those still to be procured / distributed, have been and will be covered by RoRC, utilizing the NS's own funds.

Operational Update No. 2 of 20 February 2025:

All procurements, including both replenishment of existing stocks and new acquisitions, were carried out by the RoRC Procurement Department in accordance with internal logistics procedures, IFRC procurement guidelines, and local law. Warehousing costs were covered by the DREF budget line, while distribution costs were covered by the National Society.

### How will this operation be monitored?

The operation will be monitored by the IFRC office in Romania, based in Bucharest, together with the Romanian Red Cross. Regular visits in the field will be taken into consideration if necessary and will be organised together with the Romanian Red Cross headquarters and the local branch, as well as monthly indicator collecting forms that will be followed by narrative reports of the operation.

A Lessons Learned Workshop will be conducted towards the final stage of the operation, allowing for gathering operational learning and improving future response efforts.



Operational Update No. 2 of 20 February 2025:

The operation has been monitored by the IFRC office in Romania, based in Bucharest, in collaboration with the Romanian Red Cross. A Lessons Learned Workshop is planned for the first week of March 2025 in Galați to capture operational insights and enhance future response efforts.

Limitations: As provided in the WASH section above, many families in Galați received WASH assistance across multiple distributions based on their evolving needs. As a result, there is a possibility of double counting. This means the data on people and households reached may not fully reflect the unique number of assisted, which is a limitation of the operation. The most affected and vulnerable families continue to receive WASH support, as they remain unable to acquire these resources themselves.

## **Please briefly explain the National Societies communication strategy for this operation**

The RoRC communication department will handle any outgoing communication towards the public, as well as act as a main point of contact for all incoming public inquiries.



# Contact Information

For further information, specifically related to this operation please contact:

**National Society contact:** Daniel Modoacă, Disaster Manager, daniel.modoaca@cruceariosie.ro, +40 748 238 018

**IFRC Appeal Manager:** Christie Edwards, Head of Delegation, christie.edwards@ifrc.org

**IFRC Project Manager:** Anna Cerutti, Coordinator, Programs, anna.cerutti@ifrc.org

**IFRC focal point for the emergency:** Aleksandar Panic, Coordinator, Operations, aleksandar.panic@ifrc.org

**Media Contact:** Dan Brumar, Communications Manager, dan.brumar@cruceariosie.ro, +4 0720 574 232

[Click here for the reference](#)





# DREF OPERATION

## MDRCCxxx - Romanian National Red Cross Society Romania: Flood

### Operating Budget

|   |                |
|---|----------------|
| <b>Planned Operations</b>                       | <b>390,178</b> |
| Shelter and Basic Household Items               | 330,396        |
| Livelihoods                                     | 17,357         |
| Multi-purpose Cash                              | 0              |
| Health  | 0              |
| Water, Sanitation & Hygiene                     | 42,425         |
| Protection, Gender and Inclusion                | 0              |
| Education                                       | 0              |
| Migration                                       | 0              |
| Risk Reduction, Climate Adaptation and Recovery | 0              |
| Community Engagement and Accountability         | 0              |
| Environmental Sustainability                    | 0              |
| <b>Enabling Approaches</b>                      | <b>75,014</b>  |
| Coordination and Partnerships                   | 0              |
| Secretariat Services                            | 14,058         |
| National Society Strengthening                  | 60,956         |
| <b>TOTAL BUDGET</b>                             | <b>465,192</b> |

*all amounts in Swiss Francs (CHF)*