



Assistance aux humanitaires de la CRB

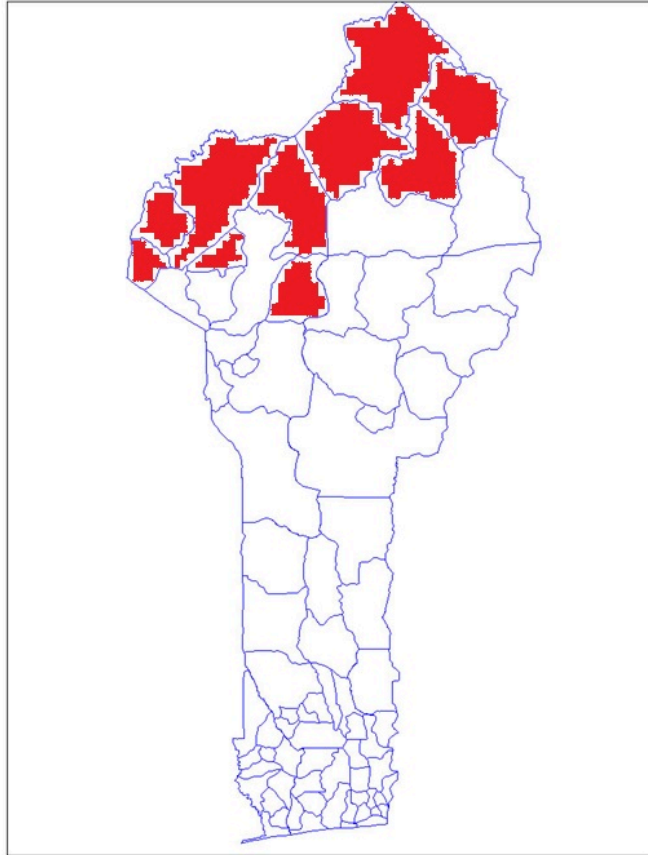
Appeal: <b>MDRBJ020</b>	Country: <b>Benin</b>	Hazard: <b>Population Movement</b>	Type of DREF: <b>Assessment</b>
Crisis Category: <b>Yellow</b>	Event Onset: <b>Slow</b>	DREF Allocation: <b>CHF 50,000</b>	
Glide Number: <b>-</b>	People Affected: <b>39,433 people</b>	People Targeted: <b>13,452 people</b>	
Operation Start Date: <b>04-02-2025</b>	Operation Timeframe: <b>2 months</b>	Operation End Date: <b>30-04-2025</b>	DREF Published: <b>19-02-2025</b>

Targeted Areas: **Alibori, Atakira**

# Description of the Event

## Date when the trigger was met

21-01-2025



## What happened, where and when?

The growing acts of the security crisis in the Sahel has gradually spread to border countries, including Benin. Benin's northern departments, particularly the Alibori and Atacora departments, have been the scene of multiple attacks that have displaced thousands of people. The situation is punctuated by attacks in various localities and then periods of calm that continuously generate population movements between the various regions and between the border localities of other countries and Benin.

Despite the lack of media coverage on the situation and the difficulties in accessing information following the attacks due to the security context, the analysis of several sources and information from the Red Cross branches shows a clear deterioration of the humanitarian situation in the northern regions of the country in the last three years. The Red Cross and the authorities are facing a growing crisis, the prolongation of which and the conditions of access and response are generating increasing concern for displaced populations and host populations in the northern areas of the country.

- From December 2021 to September 2022, some 43 attacks were recorded in Benin linked to non-state armed groups in these regions, according to the researcher Kars de Bruijne in the newspaper Le Monde [source 1]. During this period, the Red Cross of Benin (BCR) has been monitoring the situation with the authorities. The attacks, initially limited to the W and Pendjari parks, have caused the displacement of 2,284 people to the Atacora in two years. [source 2]
- In 2023, the armed raids spread to the neighboring communes of Pendjari and the W parks, causing an attack on displaced people and Togolese and Burkinabe refugees. Between 3 April and 13 May, 28 people were killed, kidnappings were reported, and people were injured. The attacks were mainly concentrated in the communes of Matéri, Tanguiéta, Kérou, Tampassika in the department of Atakora. A total of 6,852 displaced persons (4,267 IDPs & 2,585 refugees) displaced to villages further south in the same communes of Matéri, Tanguiéta and Kérou in the department of Atakora. [source 2]
- As of 25 October 2023, BRC data indicated that approximately 13,222 people were displaced in Atacora and 5,837 in Alibori, for a total of 19,059 displaced people. The affected municipalities of Atacora are Cobly, Kérou, Tanguiéta, Matéri, Natitingou and Toucoutouna, while in Alibori, the affected areas are Banikoara, Karimama and Malanville. [source 3\_rapport\_nal MDRB]018fr]
- Between January and September 2024, 111 violent incidents and 58 social unrests were reported. Incidents include attacks, abductions, enforced disappearances and detentions.

- In the last quarter of 2024, several attacks were recorded. A 2024 IOM Displacement Tracking Matrix (DTM) mapping exercise identified 12,501 internally displaced persons (IDPs), 37% of whom were minors. This figure is in addition to several thousand asylum seekers and internally displaced persons who have not yet been registered from recent attacks.

- On January 8, 2025, a large-scale attack targeted a military position located in the strategic area of "Triple Point", on the border between Benin, Niger and Burkina Faso, more precisely in the commune of Banikoara, 699.4 km from Cotonou. According to the Chief of Staff of the National Guard, the group responsible for this attack is one of the best equipped and structured in the region. This incident led to the loss of about 30 members of the defense and security forces (FDS) and caused major forced displacements of the population. The census is still ongoing to assess the extent of displacement and the impact at community level. Faced with this dramatic situation, several calls for national solidarity have emerged.

The fear and threats from armed groups have led to a population movement that has now become a growing humanitarian crisis. The regulation of data from the last 3 years shows that the number of displaced people has increased from 2,284 people in 2021 to nearly 13,000 in 2024, not including those displaced by recent attacks and areas with access difficulties. The toll of material and human losses in several localities is also pushing hundreds of households to desert their places of origin, also impacting production and the local economy for displaced people and host communities. The local authorities have approached the Red Cross for humanitarian support in the different phases of the crisis and following the events of 2025.

Movement partners alongside with the Benin Red Cross have been active in the concerned departments for several years, but the new waves of displacement between the end of 2024 and the beginning of 2025 require an assessment of the situation and a reinforcement of humanitarian support. On 21 January 2025, the Red Cross of Benin called for a meeting of the Movement's partners (ICRC, IFRC, Swiss, Luxembourg and Flanders Red Cross Societies) to discuss the Movement's approach to the situation and its humanitarian development. However, the censuses are still ongoing. The information gap on the situation and the limitations of current humanitarian action are restricting planning capacity. More data is needed to ensure holistic planning. The need for an evaluation was unanimously expressed. This DREF allocation will contribute to data collection efforts that will make it possible to clarify the situation and the priorities for geographical and sectoral intervention. This allocation will cover a multi-sectoral assessment of the situation with a view to developing a comprehensive humanitarian preparedness and response plan.



échanges avec PDI et Populations Hôtes

## Source Information

Source Name	Source Link
1. Source 1	<a href="https://www.lemonde.fr/afrique/article/2023/01/27/au-benin-la-lutte-antidjihadiste-fait-craindre-une-stigmatisation-accrue-des-peuls_6159588_3212.html">https://www.lemonde.fr/afrique/article/2023/01/27/au-benin-la-lutte-antidjihadiste-fait-craindre-une-stigmatisation-accrue-des-peuls_6159588_3212.html</a>
2. Source 2	<a href="https://adore.ifrc.org/Download.aspx?FileId=682808">https://adore.ifrc.org/Download.aspx?FileId=682808</a>



# Current National Society Actions

## Start date of National Society actions

21-01-2025

<b>Coordination</b>	<p>As violence escalates, it has become imperative to step up joint efforts within the Red Cross Movement to enable the National Society (NS) to respond effectively to this crisis. With this in mind, an online coordination meeting was organized on 21 January 2025. The objective of this meeting was to discuss the measures planned by the CRB to guarantee the safety of the teams on the ground, as well as the practical arrangements to be taken to anticipate and implement the necessary humanitarian actions.</p> <p>The Movement's partners unanimously endorsed the proposal to request for a DREF. This funding will make it possible to carry out an in-depth assessment of the security and humanitarian situation, develop a comprehensive preparedness and response plan adapted to this crisis with a view to better manage interventions.</p> <p>The Red Cross of Benin actively participates in coordination meetings with other humanitarian actors in the two departments. The NS plays a key role in supporting the interventions of the various actors at community level.</p>
<b>Assessment</b>	<p>The Red Cross of Benin has activated the monitoring units in the targeted communes to ensure regular monitoring of population movements. Constructive exchanges are also being established with the local authorities with the aim of carrying out a multisectoral assessment of the situation. These actions aim to strengthen coordination and obtain accurate information to better respond to the needs of the community members.</p>

## IFRC Network Actions Related To The Current Event

<b>Secretariat</b>	<p>Through its Abuja cluster, the IFRC has an office in Benin to support the Red Cross. It receives technical and financial support. During the operation, the IFRC provides technical and financial support (operations, funds, etc.) for development and implementation. The information will be shared with all stakeholders in the operation.</p>
<b>Participating National Societies</b>	<p>The Red Cross of Benin hosts the Flemish, Luxembourg and the Swiss Cross Societies as partner National Societies. TCRB is involved in first aid, blood donation and disaster preparedness, shelter, health and WASH. These achievements will also be highlighted for a more in-depth assessment of the situation.</p>

## ICRC Actions Related To The Current Event

The ICRC was already operating in Benin through its mission based in Lomé. Since 20 December 2024, it now has a dedicated mission in Benin to strengthen its support for actions in favor of vulnerable populations. The ICRC and the BRC are jointly implementing health, economic security, water and sanitation and restoring family links programmes in the Alibori and Atacora regions. These humanitarian activities are complemented by a capacity building programme for the Regional and Local Committees of the BRC based on safer access and operational security management. The ICRC's expertise will be used to carry out a more in-depth assessment of the situation on the ground.

## Other Actors Actions Related To The Current Event

<b>Government has requested international assistance</b>	Yes
--	-----



<p><b>National authorities</b></p>	<p>The two prefectures of the department of Atacora and Alibori are organizing coordination meetings to discuss the current situation, the needs of displaced people and possible support and actions with partners working in Atacora. The meeting brought together UNFPA, UNICEF, Plan International Benin, IHSA/USAID, CRB, MSF, GIZ, WFP, ANPC, etc. The meeting serves as a forum for exchanges to improve interventions in favour of displaced people.</p> <p>The national and local authorities are taking stock of the situation and the impact on the communities. Following these events, a generalized fear has set in the departments of the Republic of Benin, which have already suffered attacks, calling on the authorities who expressed themselves through the government spokesman on 17 January, offering condolences to the bereaved families and to the entire Beninese population, while calling on them to remain calm and resilient.</p>
<p><b>UN or other actors</b></p>	<p>One can mention</p> <ol style="list-style-type: none"> <li>1. UNPFA for the organization of basic health care</li> <li>2. UNICEF which supports children in classroom situations.</li> <li>3. UNHCR's support to asylum seekers.</li> </ol> <p>The department of Atacora has a platform bringing together several international organizations including United Nations organizations, national originations and other organized associations (UNFPA, UNICEF, CRB, Plan International Bénin, Educo, GIZ, WFP, IHSA/USAID, Handicap International...). The Red Cross of Benin is an active member of this platform headed by the Prefect of the Atacora Department.</p>
<p><b>Are there major coordination mechanism in place?</b></p> <p>As an auxiliary to the public authorities in the humanitarian field and a member of various platforms (national, departmental and local) for disaster risk reduction and adaptation to climate change, the Red Cross of Benin actively participates in the various planning and monitoring meetings at national and departmental level. It has a team based at the North Branch, which will be the operational team for the implementation of the project, with the support of the headquarters team.</p>	

## Operational Strategy

### Overall objective of the operation

The operation aims to carry out an in-depth assessment of the needs of internally displaced persons, refugees, asylum seekers and the host communities for the interventions of the BRC. The evaluation will take place in the department of Atacora, more precisely in the communes of Kérou, Péhunco, Cobly, Matéri, Toucountouna, Tanguiéta, and in the department of Alibori, covering the communes of Malanville, Karimama, Banikoara and Kandi for two months.

### Operation strategy rationale

The objective of this operation is to carry out a multisectoral assessment of the humanitarian needs generated by the security situation in northern Benin and the specific humanitarian response gaps for the various groups of displaced people. In particular, internally displaced persons (IDPs), refugees, asylum seekers and the host communities in the departments of Alibori and Atacora, strongly impacted by the ongoing security crisis, more specifically by those caused by the latest events of January 2025.

A well-structured evaluation framework is being developed. Data will be collected using a mixed approach combining qualitative data collection techniques (direct observations, focus groups with host and refugee communities) and quantitative data collection techniques (administration of key informant questionnaires and one-on-one interviews). Meetings with key informants (village chiefs, township chiefs, chairpersons of refugee committees, group leaders, civil society and other local leaders, development associations) will be organized to collect information based on questions prepared by the evaluation team. Surveys and individual interviews on the situation of EHI/Shelter, EHA, SAMI, Protection, will be conducted among the households of refugees and workers in the area evaluated. Mission reports and secondary data will be used. Special attention will also be paid in this evaluation to the protection and analysis of vulnerabilities, the level of access, the dynamics and factors of social cohesion of the various concerned groups. The aim is for the humanitarian interventions developed subsequently to be evidence-based, effective and effective in the medium/long term.

Direct observations will be conducted using an evaluation grid by members of the rapid evaluation team. Focus groups will be held with different categories of people in the targeted localities. These focus groups will provide an opportunity to analyze issues and needs at community level, deepen direct observations and interviews with key informants within communities. It will also allow interacting with



the host populations and understand the difficulties they are facing.

The evaluation will be a coordinated one with the participation of all the actors of the International Red Cross/Red Crescent Movement for its implementation. It will include the International Federation of Red Cross and Red Crescent Societies (IFRC), the International Committee of the Red Cross (ICRC) and the partner National Societies. This collaboration will take place within the framework of a coordinated and inclusive approach aimed at ensuring an effective and harmonized planning of partnerships and coordination of security arrangements with the support of the ICRC and the IFRC.

The Secretariat will ensure that the IFRC's migration and displacement approach is integrated into the objectives, methodology, multi-sectoral data collection and tools for the assessment. The evaluation teams will include people trained and briefed on the objectives and concepts of migration and displacement, and on the notion of protection and community engagement. The BRC will ensure that a comprehensive assessment of the needs of the displaced is carried out, respecting their rights, dignity and social cohesion.

The NS will ensure that humanitarian access and coordination are assessed and strengthened during this phase. Exchange sessions will be organized with humanitarian organizations working in these departments, and with the relevant government services. These meetings will strengthen exchanges, the consideration of available data from actors in the field and coordination. The Beninese Civil Protection Agency will actively participate in this process by providing its expertise and helping to ensure the transparency of our actions. This collaboration aims to promote an inclusive approach and strengthen the credibility of actions conducted in the intervention areas.

At the beginning of the evaluation, a Red Cross response plan will be drawn up on the basis of the results and recommendations of this evaluation. The support of Movement partners to the humanitarian situation will be coordinated around this response plan.

## Targeting Strategy

### Who will be targeted through this operation?

This evaluation will take place in the department of Atacora, more precisely in the communes of Kérou, Péhunco, Cobly, Matéri, Toucountouna, and Tanguiéta, and in the department of Alibori, covering the communes of Malanville, Karimama, Banikoara and Kandi for two months.

This operation mainly targets internally displaced persons, refugees, asylum seekers and the host communities. It will also involve humanitarian actors and local authorities to strengthen coordination and ensure an effective humanitarian response at community and institutional level.

### Explain the selection criteria for the targeted population

Targeting will take into account people affected by the security situation, based on a vulnerability analysis. Particular attention will be paid to people with special needs, including the elderly, pregnant women, people with disabilities, the sick, as well as widows and widowers, while including those who fall ill as a result of this crisis. The mechanism for the active participation of communities will be fully integrated throughout the evaluation process. To ensure that needs are equitably addressed, focus groups will be organized, involving community members through their representatives, as well as community, religious, and state leaders.

## Total Targeted Population

Rural	-	Urban	-
People with disabilities (estimated)	-		
Total targeted population	13,452		

## Risk and Security Considerations

### Please indicate about potential operation risk for this operations and mitigation actions

Risk	Mitigation action
The security situation in the border areas of Burkina Faso, Niger and Togo may have a bearing on national security and the overall development of the operation	The Red Cross of Benin will constantly inform the teams about safety information and applicable regulations. Most volunteers in these areas are trained in safer access, security, and safety. The BRC has a good relationship with the security guards and during

	the implementation the NS will provide refresher for its volunteers as needed
The proliferation of diseases with epidemic potential	The Red Cross of Benin will invest heavily in health promotion and disease prevention
Inaccessibility of response areas due to threats	The Red Cross of Benin will invest in the collection of security information for the protection of volunteers and staff

**Please indicate any security and safety concerns for this operation**

The two departments concerned have borders with Burkina Faso, Niger, the Pendjari Park and Togo, and are facing unstable security situation. This instability, fueled by violence, has led to a growing threat of non-state armed groups and kidnappings in areas of northern Benin, along the border with Burkina Faso and Niger. The porosity of the borders with these countries, particularly in the regions where the W forests and the Pendjari national parks are located, makes this area vulnerable to incursions by armed groups operating in the Sahel, which exploit this favorable terrain. The risk of explosive devices is particularly high when travelling to remote areas of national parks along the border. Humanitarian personnel are also at increased risk of attacks, banditry and kidnapping along the country's eastern border with Nigeria, where the presence of armed criminal groups increases the threat of petty crime and violent crime. Outside of Cotonou, the roads are poorly lit, and it is not advisable to travel at night in these areas. Security management will be guided by the Fundamental Principles and Humanitarian Values of the International Red Cross and Red Crescent Movement. Regular updates on the security situation will be organized and disseminated, accompanied by real-time monitoring of activities in the field via the Red Cross of Benin information management system. An assessment of the specific security risks in each area will be carried out, and risk mitigation measures will be identified and put in place. All members of the IFRC, as well as staff and volunteers of the NSs, will be required to complete the IFRC's Stay Safe online course. All must also comply with the Code of Conduct and will be covered by Movement risk insurance provided by the IFRC.

Has the child safeguarding risk analysis assessment been completed?

Yes

## Planned Intervention



### Risk Reduction, Climate Adaptation And Recovery

Budget: CHF 18,625  
 Targeted Persons: 13,452

#### Indicators

Title	Target
# of municipalities assessed	10
# of general response plan elaborated	1

#### Priority Actions

- Needs assessment in the 10 municipalities
- Organization of a workshop to develop the general response plan



### Community Engagement And Accountability

Budget: CHF 2,980  
 Targeted Persons: 13,452



## Indicators

Title	Target
# of focus group participants	280

## Priority Actions

- Organization of focus groups with the targets



## Coordination And Partnerships

**Budget:** CHF 1,326

**Targeted Persons:** 13,452

## Indicators

Title	Target
Organization of focus groups with the target population	1
# of roundtables on the BRC's humanitarian response with humanitarian actors in Benin	1

## Priority Actions

- Movement meeting on the global response plan
- Roundtable on the BRC's humanitarian response with humanitarian actors in Benin



## Secretariat Services

**Budget:** -

**Targeted Persons:** 13,452

## Indicators

Title	Target
# of surge personnel deployed	1

## Priority Actions

- Deployment surge
- Other IFRC expenses



## National Society Strengthening

**Budget:** -

**Targeted Persons:** 13,451



## Indicators

Title	Target
# of Staff members deployed	4
# of supervision missions conducted	1

## Priority Actions

- Workshop on planning and supervision of activities
- Purchase of operating fuel
- Car rental
- Communication plan
- Part-time deployment (Motivation) Disaster Relief and Relief Coordinator
- Full-time deployment (Motivation) Security Focal Point
- Part-time deployment (Motivation) Accountant
- Part-time deployment (Motivation) PMER
- CRB administrative costs (6.5%)

## About Support Services

### How many staff and volunteers will be involved in this operation. Briefly describe their role.

This operation will mobilize the following human resources:

- At the level of local committees: 10 volunteers and 1 focal point for the implementation of activities in the field
- At branch level: two executive secretaries for the coordination and close monitoring of activities in the municipality
- At the national level: A Disaster Relief Coordinator, an accountant, a planner and the Security Focal Point

The Red Cross of Benin, through its Relief and Disaster Department, will oversee all operational aspects, including the implementation, monitoring, evaluation and reporting of the assessment in the communes affected, through its network of volunteers. Responsibility for the close monitoring of the evaluation will rest with the BRC antennae but will be overseen by the BRC headquarters to ensure accountability, transparency and financial management of the operation. The security focal point ensures security information before the deployment of the teams.

### Will surge personnel be deployed? Please provide the role profile needed.

The profile sought for the surge must include strong skills in Planning, Monitoring, Evaluation and Reporting (PMER). He will provide support for the operational evaluation in the field and must have excellent writing skills to contribute effectively to the development of the operational plan.



# Budget Overview

International Federation of Red Cross and Red Crescent Societies

V2022.01

## DREF budget tool for National Societies

National Society

BENIN RED CROSS

Appeal Code

MDRBJ020

Date

24/01/2025

Operation

Mouvement de population

Currency (LC) &

XOF

Exchange Rate

0,00149

Output Code	Description	Budget Group	Quantity	Unit	Unit Cost	Total Cost LC	Total Cost CHF
AP104	Evaluation des besoins dans populations dans les 10 comm		10,00	Forfait	1 000 000,00	10 000 000,00	14 900,00
AP104	Atelier de d'elaboration du plan de réponse globale		1,00	Atelier	2 500 000,00	2 500 000,00	3 725,00
<b>TOT_AP104</b>	<b>Assistance to people affected</b>					<b>12 500 000,00</b>	<b>18 625,00</b>
<b>PO09</b>	<b>Risk Reduction, Climate Adaptation and Recovery</b>					<b>12 500 000,00</b>	<b>18 625,00</b>
AP129	Organisation des focus group avec les cibles		40,00	Seance	50 000,00	2 000 000,00	2 980,00
<b>TOT_AP129</b>	<b>Community engagement/accountability</b>					<b>2 000 000,00</b>	<b>2 980,00</b>
<b>PO10</b>	<b>Community Engagement and Accountability</b>					<b>2 000 000,00</b>	<b>2 980,00</b>
AP049	Déploiement surge		1,00	Forfait	3 000 000,00	3 000 000,00	4 470,00
AP049	Autres charges IFRC		1,00	Forfait	1 400 000,00	1 400 000,00	2 086,00
<b>TOT_AP049</b>	<b>IFRC coord. in humanitarian system</b>					<b>4 400 000,00</b>	<b>6 556,00</b>
AP119	Table ronde sur la reponse humanitaire de la CRB avec les a		1,00	Atelier	2 500 000,00	2 500 000,00	3 725,00
<b>TOT_AP119</b>	<b>Influencing and hum. diplomacy</b>					<b>2 500 000,00</b>	<b>3 725,00</b>
AP128	Reunion mouvement sur le du plan de réponse globale		1,00	Atelier	2 000 000,00	2 000 000,00	2 980,00
<b>TOT_AP128</b>	<b>Movement Cooperation</b>					<b>2 000 000,00</b>	<b>2 980,00</b>
<b>EA01</b>	<b>Coordination and Partnerships</b>					<b>8 900 000,00</b>	<b>13 261,00</b>
AP124	Atelier de préparation et de planification de l'operation		1,00	Atelier	2 000 000,00	2 000 000,00	2 980,00
AP124	Supervision des activites		1,00	Forfait	1 500 000,00	1 500 000,00	2 235,00
AP124	Location de voitures		30,00	Forfait	30 000,00	900 000,00	1 341,00
AP124	Achat de carburant d'exploitation		1,00	Forfait	200 000,00	200 000,00	298,00
AP124	Communication		2,00	mois	125 000,00	250 000,00	372,50
AP124	Déploiement à temps plein (Motivation) Point Focal Sécurité		2,00	mois	300 000,00	600 000,00	894,00
AP124	Déploiement à temps partielle (Motivation) Coordonnateur		2,00	mois	200 000,00	400 000,00	596,00
AP124	Déploiement à temps partielle (Motivation) Comptable		2,00	mois	150 000,00	300 000,00	447,00
AP124	Déploiement à temps partielle (Motivation) PMER		2,00	mois	150 000,00	300 000,00	447,00
AP124	Frais administratif CRB (6.5%)		0,07	Taux (6,5)	25 450 000,00	1 654 250,00	2 464,83
<b>TOT_AP124</b>	<b>National Society Development</b>					<b>8 104 250,00</b>	<b>12 075,33</b>
<b>EA03</b>	<b>National Society Development</b>					<b>8 104 250,00</b>	<b>12 075,33</b>
	<b>DIRECT COSTS total</b>					<b>31 504 250,00</b>	<b>46 941,33</b>
	<b>INDIRECT COSTS</b>					<b>2 047 776,25</b>	<b>3 051,19</b>
	<b>TOTAL BUDGET</b>					<b>33 552 026,25</b>	<b>49 992,52</b>

Internal

1/1

[Click here to download the budget file](#)



# Contact Information

For further information, specifically related to this operation please contact:

**National Society contact:**

Eustache Orens HOUDEGBE, Coordinateur Secours et Catastrophes, orens.houdegbe@croixrougebenin.org, 96424858

**IFRC Appeal Manager:** Bhupinder Tomar, Head of Cluster Delegation, bhupinder.tomar@ifrc.org, +252 63 4106443

**IFRC Project Manager:** DODZI ADAHA, Senior Officer, Disaster Management, dodzi.adaha@ifrc.org

**IFRC focal point for the emergency:** Francis Salako,, Coordinator, Programs & Operations, francis.salako@ifrc.org

**Media Contact:** Tranquillin F. Yadouleton, Secrétaire Général, tranquillin.yadouleton@croixrougebenin.org

[Click here for the reference](#)

