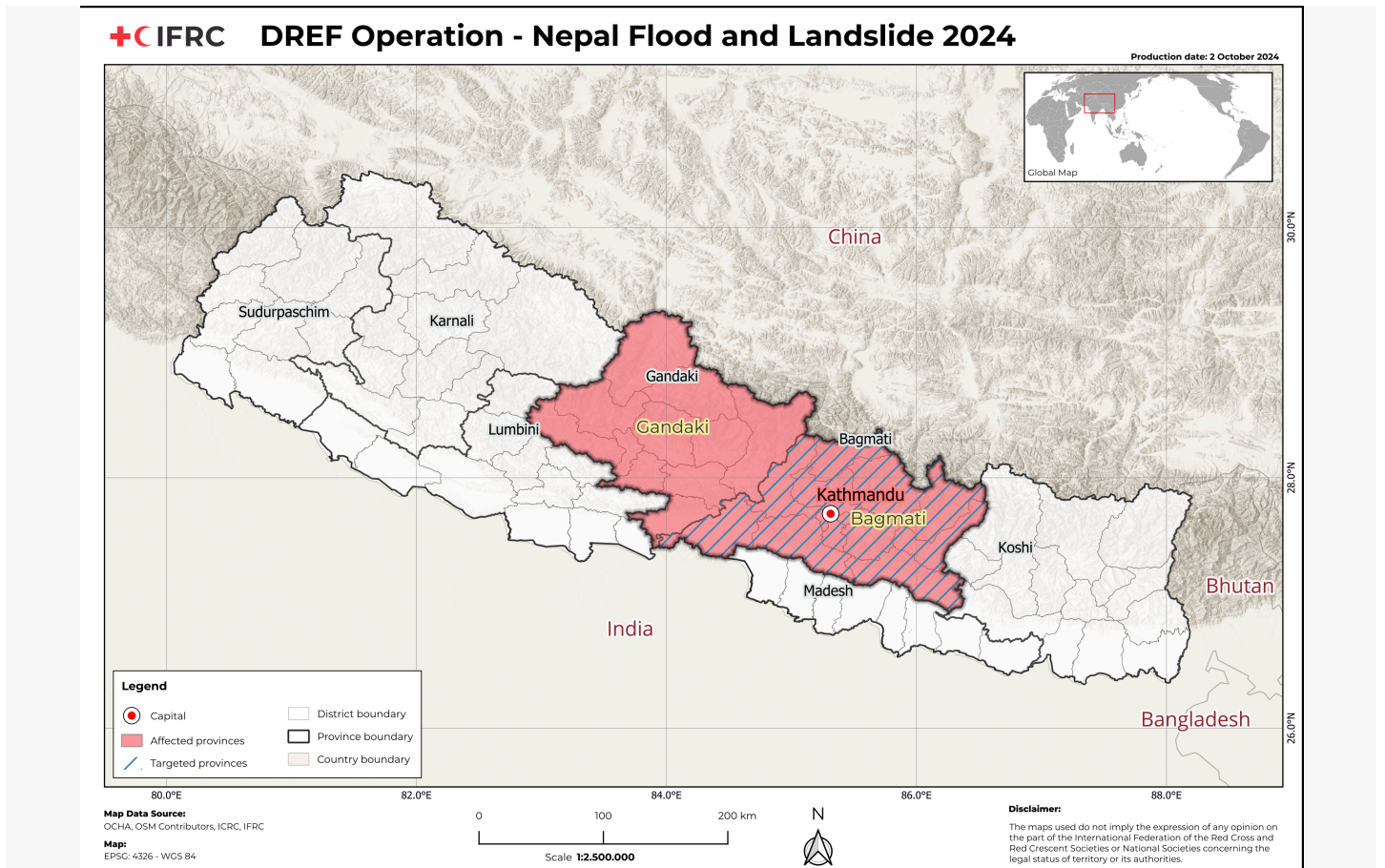




A beneficiary from Kavre District after receiving multipurpose cash support from NRCS. (Photo: NRCS)

Appeal: <b>MDRNP018</b>	Total DREF Allocation: <b>CHF 520,718</b>	Crisis Category: <b>Orange</b>	Hazard: <b>Flood</b>
Glide Number: <b>FL-2024-000177-NPL</b>	People Affected: <b>26,500 people</b>	People Targeted: <b>9,000 people</b>	
Event Onset: <b>Sudden</b>	Operation Start Date: <b>02-10-2024</b>	New Operational End Date: <b>30-04-2025</b>	Total Operating Timeframe: <b>6 months</b>
Reporting Timeframe Start Date: <b>03-10-2024</b>		Reporting Timeframe End Date: <b>05-11-2024</b>	
Additional Allocation Requested: <b>0</b>		Targeted Areas: <b>Bagmati</b>	

# Description of the Event



Map of affected districts by the flood and landslide in September 2024. (Photo: IFRC IM)

## Date of event

27-09-2024

## What happened, where and when?

The Department of Hydrology and Metrology of the Government of Nepal issued a special bulletin on weather forecasting on 25 September 2024 indicating that there will be heavy rainfall across the country exceeding water above danger level in Babai, West Rapti, and Karnali in the Western part of the country and Koshi in the east. In response, the Nepal Red Cross Society (NRCS) activated its Simplified Early Action Protocol (sEAP) following a decision made during the advisory committee meeting (comprising NRCS and IFRC representatives) on 26 September. The sEAP was triggered to support communities living in the Babai and West Rapti river basins in the western part of the country. As part of early actions, NRCS volunteers informed local communities about the potential flooding and helped to prepare them for evacuation. Volunteers also arranged shelters at pre-identified evacuation sites, with relief items and transport vehicles were kept on standby. However, unexpected heavy rainfall was recorded in the Kathmandu Valley and nearby eastern districts which were different from those targeted through sEAP in the western part of the country. Hence, the sEAP was de-escalated on 28 September after being active for 48 hours.

From 26 September 2024, continuous three-day rainfall resulted in widespread flooding and landslides across the country in the districts east of Kathmandu. The heavy rains caused multiple rivers to exceed danger levels, leading to devastating floods that claimed at least 250 lives and caused extensive damage to infrastructure, including roads, bridges, public buildings, and health facilities. The floods also severely affected private homes in at least 50 districts, with the hardest-hit areas reported in Kavrepalanchok, Sindhuli, Lalitpur, Makwanpur, Ramechhap and Panchthar. Additionally, many travelers were stranded on the roads for more than 36 hours due to the flooding. In a tragic incident in Dhading District, a landslide buried at least three vehicles, resulting in the loss of 35 lives. Especially in Kathmandu Valley, many areas along the river sides were inundated and water receded after three days of the incident. As a result, many families residing nearby to the rivers were temporarily displaced. The rainfall recorded on 26 and 27 September has been identified as the heaviest ever recorded in Nepal's history. [1][2]



Links:

[1] <http://drrportal.gov.np/>

[2] <https://www.climatecentre.org/14546/nepal-floods-follow-most-intense-rainfall-for-more-than-half-a-century/>



One of the affected communities in Kavre District Chapter.  
(Photo: IFRC Nepal Country Delegation)



Red Cross staff interacting with a beneficiary during cash distribution in Kavre District Chapter. (Photo: IFRC Nepal Country Delegation)

## Scope and Scale

As of 5 November 2024, the Nepal Red Cross Society (NRCS) conducted a detailed assessment in 6 of the most affected and targeted districts namely, Kavre Palanchowk, Sindhuli, Lalitpur, Makwanpur, Ramechhap and Panchthar in October 2024. The teams on the ground have reported more than 5,300 households (approximately 26,500 people) across these districts have been affected. Due to the severe impact of the floods and landslides, the affected families still do not have access to basic services like water, transportation, communication and electricity services have not been restored in some of the remote areas. According to the NRCS District Chapters, most of the displaced families are staying in the rented houses, few of them are still living under tarpaulin or with their relatives.

## Summary of Changes

Are you changing the timeframe of the operation	No
Are you changing the operational strategy	Yes
Are you changing the target population of the operation	Yes
Are you changing the geographical location	Yes
Are you making changes to the budget	Yes
Is this a request for a second allocation	No
Has the forecasted event materialize?	No

### Please explain the summary of changes and justification:

Overall, the total amount of the DREF budget remains unchanged. This operation update has many major changes in the strategy, target, and budget related to shelter, WASH, MPC. There was an initial target to provide conditional cash for transitional shelter however the government committed the funding support to the transitional shelter. Therefore, this revised plan has reallocated the budget for additional budget for the MPC. In addition, there is huge impact in the water system due to the disaster and the affected population are not having access to safe drinking water. Thus, the indicator for WASH sector is revised and the target for renovation of water scheme is added. This also leads to the increment of WASH sector budget.

In terms of the geographical impact heavy rainfall was observed in some parts of the Gandaki Province at the beginning, however, no

significant impact was reported. So, the operation is now focused on the five most affected districts in Bagmati Province through In-Country members including DREF support as one district in Koshi Province is being supported by the IFRC In-Country Members based on the one plan approach.

Moreover, the total number of beneficiaries to be reached by DREF has been revised from 20,000 to 9,000 people based on the findings of the details assessment conducted in affected district by the NRCS. However, the in country members are covering an additional 6,000 people from their bilateral support. Thus, there is only a slight change for the IFRC-wide target beneficiaries. The government has requested NRCS to mobilize volunteers to conduct the detailed assessment and establishing help desks which increased the number and cost of the volunteer mobilization. Thus, the budget of national societies strengthening has been revised accordingly.

## Current National Society Actions

### Start date of National Society actions

27-09-2024

<b>Shelter, Housing And Settlements</b>	As of 31 October 2024, NRCS distributed 894 tarpaulins, 430 mattresses, 881 blankets, 350 mosquito nets in the affected areas by mobilizing their internal prepositioned stocks.
<b>Water, Sanitation And Hygiene</b>	Based on the detailed assessment, NRCS identified its necessity of repairing the damaged water schemes, thus supporting the restoration of 34 water schemes in targeted districts. Out of those 34 schemes, 16 will be supported by IFRC DREF.
<b>Protection, Gender And Inclusion</b>	NRCS distributed 102 dignity kits from prepositioned stocks.
<b>Community Engagement And Accountability</b>	NRCS volunteers are working closely with communities for assessment and collecting feedback from household survey. Different methods for communication have been applied so far, e.g. setting up help desks, airing radio program and having Red Cross hotline 1130. Other than the latest situation and available services provided by NRCS, the help desks also provided the information of the transitional shelter process based on the requested and support by local government.
<b>Coordination</b>	NRCS is coordinating with NDRRMA, local government, District Disaster Management Committee (DDMC), national clusters, International Federation of Red Cross and Red Crescent Societies (IFRC) and its in-country members for immediate response and further assistance.
<b>National Society Readiness</b>	The NRCS Emergency Response Plan (multi-hazards) was followed, the NRCS Emergency Operation Centre (EOC) activated and regularly collecting information through regular coordination with district chapters. NRCS is also attending different meetings with the Government, co-leading the Shelter cluster and attending other clusters such as WASH and protection. NRCS volunteers and staff have also been mobilized for prompt response. NRCS manages a network of national and regional warehouses across the country with prepositioned relief items that have been dispatched to the affected areas. Most district chapters in the country maintain a minimum stock for 50 families.
<b>Assessment</b>	The district chapter conducted the initial rapid assessment (IRA) within 48 hours after the floods. As assigned by NDRRMA (National Disaster Risk Reduction and Management Authority), the NRCS deployed staff and volunteers to complete the detailed assessment across those 6 districts. The result of the detailed assessment has been consolidated for further analysis.
<b>National Society EOC</b>	EOC is functional at the National headquarters.



# IFRC Network Actions Related To The Current Event

<b>Secretariat</b>	<p>The IFRC Country Delegation has been actively supporting the NRCS in launching this IFRC-DREF, including coordinating with IFRC members, formulating the overall response strategy, and preparing the IFRC-DREF application. Additionally, the IFRC Country Delegation has assisted the NRCS in producing situation reports and finalizing two field reports on the GO Platform. The IFRC Secretariat is also supporting the NRCS in coordinating with other stakeholders, such as the Humanitarian Country Team (HCT) clusters and the Government, as required.</p> <p>While the sEAP was triggered, it will not impact this operation, as it was activated for different areas.</p>
<b>Participating National Societies</b>	<p>The American Red Cross in Nepal has approved activating its quick action fund, a dedicated bilateral tool to provide immediate relief support. Furthermore, the Danish Red Cross, through their crisis modifier supported by ECHOF and Swiss Red Cross teams in Nepal allocated funding support. The Finnish Red Cross has allocated funds from their crisis modifier-supported funds to NRCS to cover the response in Panchthar District. The PNSs are contributing to the one plan of operation focusing on sectors such as shelter, MPC, health, WASH, and, cross-cutting. The British Red Cross is also coordinating with its headquarters for possible support.</p>

## ICRC Actions Related To The Current Event

The ICRC has been providing long-standing support to the NRCS for Restoring Family Links (RFL) services. NRCS has designated RFL focal persons in all district chapters, and as the situation evolves, an increasing number of reports are being received.

## Other Actors Actions Related To The Current Event

<b>Government has requested international assistance</b>	<p>No</p>
<b>National authorities</b>	<p>The Government of Nepal has mobilized its security forces (Nepal Police, Nepal Army and the Armed Police Force) to conduct immediate search and rescue. The overall response is being led by the Ministry of Home Affairs. On 29 September 2024, the Government organized a meeting of the Council of Ministers and decided to expedite the search and rescue as well as relief distribution support in the affected areas. On 30 September, the National Disaster Risk Reduction and Management Authorities (NDRRMA) organized an executive committee meeting with all the concerned stakeholders including the NRCS to discuss further amplifying key support to the affected population. In the same meeting, the Government decided to support cash for families who lost their family members and also cash support for transitional shelter.</p> <p>The Government declared state of emergency in 71 Municipalities of affected districts. The NDRRMA applied one-door policy for the response, inviting humanitarian agencies to get their budget and plan approved by authorities. The NRCS submitted its plan and budget and received approval from the Government on 22 October 2024.</p>
<b>UN or other actors</b>	<p>The UNRCO has conducted three cluster meetings. In addition, the sector-specific cluster leads like shelter, protection, health, recovery, food and nutrition, education, cash, WASH, etc. are also conducting meetings. They have developed/updated the response plan. Cluster members organization are rendering relief services in the affected areas. The UNRCO has activated their Central Emergency Relief Fund (CERF) and UNRCO is sending out situation updates regularly.</p>
<b>Are there major coordination mechanism in place?</b>	



The coordination with the Shelter cluster is activated. As per the cluster system in place in the country, it is chaired by the Department of Urban Development and Building Construction (DUDBC) under the Ministry of Urban Development (MoUD) while IFRC is co-chair in coordination with NRCS. IFRC Country Delegation also liaised with the UN Resident Coordinator office and two situation reports were shared with the wider humanitarian community in the country. In addition, NRCS together with the IFRC is coordinating with the various line agencies of the Ministry of Home Affairs including the NEOC and National Disaster Risk Reduction and Management Authority (NDRRMA). Also, NRCS is coordinating with the Government Agencies at provincial and local levels to provide relief support in the affected areas.

As of 5 November, there were two Shelter cluster meeting organized on 29 September and 8 October respectively to share HCT wide Joint flood response plan and provided the response progress updates.

## Needs (Gaps) Identified



### Shelter Housing And Settlements

According to detailed assessment data of NRCS, more than 26,500 people (5,300 households) were affected by the recent flooding and landslides. Many affected families are living outside their homes due to the extensive damage to their houses. As of 5 November, a detailed assessment was conducted over the 6 districts and the analysis is ongoing. According to the district chapter, the level of impact on various service sectors, the major needs of the communities are emergency shelter items including (tarpaulin, blankets, and mattresses), as well as household items and clothing, especially for families whose homes are uninhabitable or were completely swept away by the flood.

Transitional shelter is also essential for families whose houses have been fully destroyed, as it will provide safety, dignity, and protection, particularly for vulnerable family members, including children, pregnant and lactating women, people with disabilities, the elderly, and those with chronic illnesses, which the local government will support. The Government has allocated a budget to cover the overall need for transitional shelter by providing conditional cash to the affected families. Therefore, the revised DREF plan has removed activities, and the budget has been allocated for other necessary sectors. All other activities in this sector remain unchanged.

While there are actors, including the government, providing shelter support, response in remote areas may be delayed due to washed-away infrastructure and intermittent communication. The NRCS can help fill this gap by rapidly mobilizing its volunteers in both urban and rural areas, ensuring that families in hard-to-reach regions receive timely assistance.



### Multi purpose cash grants

The flood has affected more than 10,000 families. Many houses were submerged, leaving residents without food, clothes, and other essential daily items. The displaced families are staying in rented houses which creates additional economic burden. These families are facing challenges in affording daily household needs including food. Therefore, there is an urgent need to support these households by providing multi-purpose cash assistance. Volunteers on the ground have reported functioning markets in the affected areas.



### Health

With the rains and flooding leading to limited WASH facilities, there is an increased risk of communicable diseases, the majority of which are waterborne. In addition, based on historical data, dengue cases are likely to rise dramatically in September and October, as the lack of proper sanitation measures may create an optimal breeding ground for mosquitoes. There is a need for promotional activities in order to aware communities of preventive measures. As of 28 October 2024, 28,212 cases have been reported in 76 districts out of which 12 people have been reported to lose their lives due to Dengue. (Ministry of Health and Population: edcd.gov.np)

At a time when communities are dealing with various issues, it is essential to ensure that they continue to prioritize their health, including mental health. Mental health and psychosocial well-being may not be prioritized immediately during a disaster like this but neglecting them can lead to long-term negative effects if not addressed. In addition to psychosocial support, people need health promotion activities addressing a wide range of health risks, including raising awareness to continue regular basic health services, such as child immunizations, antenatal care (ANC) visits, institutional delivery, and referral services, which are required for immediate operation.

Winter needs also need to be considered in the operation, as many childhood illnesses, such as seasonal flu and pneumonia, are more



prevalent during winter. As a result, people suffering from hypertension, heart disease, and other similar non-communicable diseases will require additional healthcare during this season. NRCS community volunteers are needed for community-based surveillance (CBS) of diseases to monitor and promptly report any possible outbreaks and track diseases like seasonal flu.



## Water, Sanitation And Hygiene

Based on the NRCS detail assessment, the flood and landslide have major impact on water facilities as sources of drinking water, pipelines and taps are completely washed away in severely affected municipalities of targeted districts. The entire population living in these areas lacks safe drinking water. However, the findings of detail assessment are being consolidated, concrete information will be available once the report is finalized. Additionally, many families lost their homes including toilets facilities making them prone to various preventable diseases.

The late September flooding in the Kathmandu Valley has affected populations residing near rivers, particularly in slum areas, making them susceptible to waterborne diseases. However, the water started to recede from third day of the incident and things started to normalize after a week of the flooding.



## Protection, Gender And Inclusion

People displaced from their residences are compelled to remain in open spaces. In general, the disaster amplifies the vulnerability of already at-risk groups within the community. In these public areas, where people are bound to stay in close proximity, there is an immediate need to create gender-friendly spaces as well as child-friendly spaces. This includes providing psychosocial support (PSS) and raising awareness about the prevention of sexual and gender-based violence (SGBV), as well as promoting referral pathways among the population, particularly for children and women.

Furthermore, as a large number of households have been displaced and affected, special care and attention must be given to children, vulnerable women (pregnant and lactating), people with disabilities, those with chronic illnesses, and the elderly, considering their heightened vulnerability. There is an urgent need to ensure menstrual hygiene and dignity for women and children through the distribution of dignity hygiene kits.



## Community Engagement And Accountability

When engaging with communities, it is critical to ensure that information is not only broadcasted within the communities, but that response teams also set aside time to listen to the needs and interests of affected populations, especially those who are most marginalized and least likely to have a public voice. A process must be established to ensure that information from communities is not only heard but also acted upon by providing various mechanisms to listen to and respond to those voices.

During a disaster, this approach emphasizes a participatory response mechanism, supporting the community in recognizing needs, identifying recipients, and planning implementation. Regular consultations with stakeholders and communities are necessary to identify their needs, establish the beneficiary selection process, and coordinate the distribution of relief materials. Key messages and beneficiary selection criteria of NRCS will be shared with the local government and communities and beneficiary selection process will be agreed upon accordingly. Additionally, sector-specific key messages will be contextualized so that communities can understand and act upon them through existing feedback mechanisms.

# Operational Strategy

## Overall objective of the operation

The objective of this operation is to address the immediate needs of an estimated 30 per cent of the families (estimated 9,000 people) affected by floods and landslides. The needs of the targeted families in the affected districts (Kavre Palanchowk, Sindhuli, Ramechhap, Makwanpur, Lalitpur, and Panchthar) will be addressed through immediate humanitarian relief services including the provision of emergency shelter items, safe drinking water, health and hygiene, protection, and cash and voucher assistance (CVA) for an initial period of six months.



# Operation strategy rationale

## OVERALL APPROACH

1. All actions under this response operation will focus on the flood and landslide-affected districts, Kavre Palanchwok, Sindhuli, Lalitpur, Ramechhap, Makwanpur supported by the IFRC DREF and other in-country IFRC Members and Panchthar will be supported by IFRC/Finnish Red Cross.
2. One thousand nine hundred households are targeted for emergency shelter items based on the needs of the affected families.
3. Two packages of support will be provided: (i) NRCS will target 1,800 fully destroyed households with multipurpose cash, (ii) NRCS will provide emergency shelter items, health, and hygiene promotion services to 1,800 households whose houses have been impacted either partially or fully.
4. The operational team will closely monitor the evolving situation and adapt the strategy to remain relevant. Likewise, changing weather may bring new needs and require various community engagement and/or health (including WASH) and protection interventions.
5. Optimum mobilization of local capacity and response: NRCS will promote localized action for this response operation. District chapters and sub-chapters are responsible for implementing the activities in the operation, while NRCS HQ will coordinate the response operation vertically within the organizational structure and horizontally with the IFRC network, national authorities, and other partners. The NRCS province office will be involved in coordinating with the provincial-level public authority as well as district chapters and NRCS headquarters.
6. The local government will be at the forefront, and NRCS will extend coordination and collaboration with other organizations working in the affected area for greater impact on the operation, avoiding duplication and amplifying efforts.
7. Other considerations: The following factors have been considered while developing the response strategy:
  - Difficult geographical topography and remoteness of the areas affected by floods and landslides.
  - Cumulative negative impact on the people in the affected area due to floods and landslides.
  - The approaching winter season in relatively high-altitude settlements.

## SECTOR-WISE RATIONALE

### Shelter, Housing, and Settlements:

The emergency shelter and non-food item (NFI) distribution strategy are planned based on the level of destruction of houses and impact of the household suffered. Each household with a fully destroyed house will be provided with two blankets, two tarpaulins, and two mattresses for each household which can support them to establish emergency shelter. There are number of households which are partially destroyed and are in need of some of the items like tarpaulins, blankets, etc. Such households will be provided with blankets, mattresses, or tarpaulins based on their actual needs.

In case of transitional shelter, the Government has already committed to provide conditional cash support. Hence, the DREF and NRCS do not include conditional cash support for transitional shelter and will reallocate the funding support to other response.

Considering the upcoming winter, NRCS has been distributing blankets, mattresses, to the affected families. In case of further need of such items during winters, NRCS will provide additional items which will protect them from winter to some extent.

### Health:

Health sector activities primarily aim to limit and prevent possible diseases following flood and landslide situations. The response approach includes capacity building of local NRCS volunteers for health promotion, as well as disease prevention and control. The mobilized ECV volunteers will conduct health promotion activities and ensure access to basic healthcare services, especially those related to maternal and child health (MCH) and waterborne and vector disease prevention and control. Additionally, the volunteers will work closely with the Female Community Health Volunteers (FCHVs) to provide home-based health promotional activities, including mental health and psychosocial support (MHPSS), which will be funded by IFRC in-country members. The health actions will primarily target the affected vulnerable population—pregnant mothers and individuals with underlying health conditions requiring emergency referral and pre-hospital care services—to enhance access to health facilities. Health promotional activities will be conducted jointly with the other sectoral activities as an integrated approach.

### Water, Sanitation, and Hygiene Promotion (WASH):



Considering the nature of dwelling, damage, WASH is one of the key components that must be addressed promptly in the emergency context. This helps to avoid disasters caused by a lack of safe water, and proper hygiene practices. To address the immediate WASH needs of the affected communities, NRCS District Chapters will mobilize WASH-trained volunteers. The volunteers will work with the community to carry out hygiene and sanitation promotion activities, covering the widespread population in the targeted operational area. Based on the needs of the affected households, NRCS District Chapters will distribute dignified hygiene kits to fulfill both the dignity and hygiene needs of females.

The flood and landslide have destroyed water schemes in the targeted districts and community people do not have proper access to the drinking water, so minor repair and maintenances of the destroyed water schemes can restore the water supply. Therefore, there is revision in the plan, strategy and budget for renovation of the water schemes. NRCS District Chapters, in coordination and collaboration with local municipalities, will identify damaged water sources and contribute to the minor repairment and maintenance/renovation of damaged water schemes. The construction/renovation of latrines will be supported by the Government of Nepal integrating with the transitional shelter support which has already been committed.

#### Multi-Purpose Cash (MPC):

Based on the targeting criteria, NRCS district chapters will coordinate with local authorities to identify and select 1,800 most vulnerable affected families. The IFRC will transfer the cash directly to their bank accounts, those who do not have bank account will receive cash in hand. The one-time cash support will be worth NPR 15,000 (approximately CHF 107) as per the agreed-upon Minimum Expenditure Basket (MEB) for Nepal by the Cash Working Group.

#### Protection, Gender, and Inclusion (PGI):

The first objective of the PGI sector will be to ensure that shelter, CVA, and WASH interventions target the most vulnerable among affected households, particularly people with disabilities, pregnant/lactating women, infants, and the elderly. PGI considerations will be included while conducting assessments through gathering sex and age-disaggregated data (SADD), analyzing who is being reached and who is missing out, and providing constant reporting on protection issues for children, risks of gender-based violence, and sector-specific safety concerns to the Emergency Operation Centre (EOC) by all team members and volunteers.

For the stand-alone approaches, 1,800 women (compelled to stay in open spaces for long periods) and adolescent girls from fully and partially destroyed houses are targeted for "dignified hygiene kit" support. NRCS has recently standardized a dignified hygiene kit that consists of items useful for both hygiene and dignity perspectives. The Gender Equality and Social Inclusion (GESI) department of NRCS will provide technical support to the respective sector leads, as well as district chapters, to ensure that the minimum standard commitments to PGI in emergency programming (published by IFRC and endorsed by NRCS) are applied throughout the planning and implementation of response activities.

All volunteers and staff will receive a pocket card with the Red Cross Hotline number and updated community-based gender-based violence (GBV) assistance information, as well as orientation on child protection reporting lines and practices. NRCS will work closely with women's groups to promote community-based initiatives on SGBV and protection. In addition, staff and volunteers must sign the anti-harassment and child protection Code of Conduct before their deployment. Furthermore, child- and gender-friendly spaces will be ensured in case of camp settings, if needed.

#### Community Engagement and Accountability (CEA):

According to the response strategy, coordination will be established with different sectors to integrate sectoral activities. The CEA technical team will support the sectoral team in developing sector-specific CEA approaches while formulating their implementation strategies. A variety of communication channels and methods will be used during the response, including face-to-face communication and available media channels. As needed, information will be adapted into local languages. Key messages will be shared depending on the context, such as communication channels, timing, location, and likely audience reach. Communities (both beneficiaries and non-beneficiaries) will have the opportunity to ask questions, make complaints, and appeal for their inclusion in distributions and other activities throughout the process. The NRCS District Chapters will share beneficiary selection criteria with local authorities and communities and apply participatory beneficiary selection process. The District Chapters will inform beneficiaries about distribution beforehand. Feedback will be collected by NRCS volunteers in the distribution points and will be responded.

Furthermore, the district chapters and sub-chapters will be readily available to hear and address community issues. NRCS is maintaining a register at the District Chapter and headquarters level to ensure proper documentation of feedback and responses at a minimum. All activities conducted will be carried out with the knowledge of the local government and the willingness of the community, ensuring their engagement according to relevant guidelines of the national society to ensure transparency and accountability toward the community, government, partners, and stakeholders.

To identify the exact needs of the communities, detailed assessment were conducted with the participation of community members. Community feedback mechanisms are set up by NRCS and will be enhanced through this DREF operation with support and coordination



from IFRC. The Humanitarian Values and Communication Department of NRCS, coordinating with the NRCS EOC, is responsible to collect and respond to feedback/queries/complaints received through the feedback mechanisms (Kobo feedback collection form, via hotline 1130, and social media access). The CEA approach will help prevent and address misinformation and rumors, especially regarding the distribution of relief items and cash assistance, through the development of appropriate feedback systems.

Major approaches and activities are as given below:

- Community consultation for identifying the information need.
- Strengthening multi-sectoral feedback mechanism channels including information and feedback booths (Feedback collection, recording, responding, and reporting using Kobo feedback form).
- Support sectors to develop and disseminate key messages in the communities, social media platforms, and door-to-door campaigns.
- Door-to-door visit for software activities.
- Media mobilization to disseminate sectorial messages (jingle, radio program, etc.). At least one local FM at districts.
- Collect/capture success stories/interventions for evidence-based advocacy and dissemination (capturing, documentation, videography, publication of stories, learning, good practices).

## Targeting Strategy

### Who will be targeted through this operation?

As of 6 November 2024, the NRCS is considering covering 9,000 of the most affected individuals with the IFRC DREF support, which aligns with its overall capacity in the country and the anticipated support from other stakeholders, including municipalities and humanitarian actors who are still planning their interventions. In addition, another 6,000 most-affected individuals will be supported by the in-country members (American Red Cross, British Red Cross, Danish Red Cross, Finnish Red Cross, and Swiss Red Cross). Regarding emergency shelter items support integrated with other sectors, the operation plans to support vulnerable households from the estimated affected population, considering the associated costs and budget limitations.

NRCS is applying the standard beneficiary selection criteria in coordination with local public authorities. NRCS will ensure that relief efforts adhere to government standards and address the actual needs of the affected population. Additionally, NRCS is applying gender- and diversity-sensitive analyses in beneficiary selection as well as prioritizing women-headed households, households with pregnant and lactating women, single women-headed households, households with persons living with disabilities, elderly individuals, children, survivors of sexual and gender-based violence (SGBV), and displaced persons.

### Explain the selection criteria for the targeted population

The selection criteria for targeted population are:

1. Families whose houses are fully and partially damaged by flood and landslides.
2. Households headed by children below 18 years and elderly above 65 years of age.
3. Households headed by women and single women.
4. Death of an earning member of the family due to flood and landslide.
5. Households comprising of pregnant and lactating women, people with disability and Chronic illness
6. SGBV survivors and community people from low income/displaced families.
7. Migrant/stateless people who are not able to access other support due to legal or social issues

## Total Targeted Population

Women	2,754	Rural	78%
Girls (under 18)	1,836	Urban	22%
Men	2,646	People with disabilities (estimated)	2%
Boys (under 18)	1,764		
Total targeted population	9,000		



# Risk and Security Considerations

## Please indicate about potential operation risk for this operations and mitigation actions

Risk	Mitigation action
Possible rainfall resulting in flooding and landslide	NRCS will keep its local trained volunteers on standby and mobilize locally to provide immediate response. Continuous monitoring of the rainfall status and implement anticipatory actions where applicable. Mobilize relief items at local level.
Market price fluctuation for purchase of construction materials	Cash and voucher assistance implementation and joint work with local government to monitor market conditions.
Remoteness for transportation	Coordinate with security forces and private sectors for transporting and mobilizing local volunteers or community members.

## Please indicate any security and safety concerns for this operation

The National Society's security framework will be applicable for the duration of the operation to their staff and volunteers. For personnel under IFRC security's responsibility existing IFRC country security plans will be applicable. All IFRC must, and RC/RC staff and volunteers are encouraged, to complete the IFRC Stay Safe 2.0 e-learning courses.

Enabling safe and secure programme delivery is a priority for IFRC and a standard security framework as well as a country security plan is in place which applies to all IFRC-deployed personnel. The National Society enjoys a good level of community acceptance countrywide, with established networks of community-based volunteers. There is recognition of and respect for the RC emblem and understanding of the activities carried out by the Movement. Regular contact is maintained with local security networks. IFRC country office also participates in a range of stakeholder meetings in which safety and security matters are considered and discussed, including Humanitarian Country Team (HCT) meetings convened by the UNRC office.

An IFRC country security team is in place and the general safety and security situation in country is constantly monitored. The security officer disseminates Security Advisories, including any necessary temporary restrictions when appropriate. Safety and Security alerts are also sent via SMS messages. All new and visiting international personnel are provided with a security welcome pack and must attend a security briefing within 24 hours of arrival in-country.

Field movement monitoring is in place, with field travel monitored closely through radio contact and phone communications. The security team has local networks in the areas of operation and is ready to put in place security contingency plans if necessary. All teams have access to first aid kits, hard copy road map with alternative routes, contingency supplies of water, food and funds to enable them to be self-sufficient in the event they become stranded.

Finally, it is noted that when military and/or other security actors are present in the same humanitarian space, the guidance in the Principles and Rules for Red Cross and Red Crescent Humanitarian Assistance 2013 Section 6 – Relations with Public Authorities: Civil-Military Coordination and the IFRC Stay Safe – Guide to a Safer Mission will be applied. Operations and programme managers/coordinators will adhere to the IFRC Stay Safe – Guide to Managers in Chapter 5 – Working with the military to ensure principled humanitarian action.

**Has the child safeguarding risk analysis assessment been completed?**

No



# Planned Intervention



## Shelter Housing And Settlements

**Budget:** CHF 147,853

**Targeted Persons:** 9,000

### Indicators

Title	Target	Actual
# of people (and households) provided with conditional cash support for transitional shelter that is safe and adequately enables essential household and livelihoods activities to be undertaken with dignity	0	0
# of households provided with emergency shelter, who subsequently occupy shelter that is safe and adequately enables essential household and livelihoods activities to be undertaken with dignity	1,800	894

### Progress Towards Outcome

As of 31 October 2024, NRCS distributed 894 tarpaulins, 430 mattresses, 881 blankets, reaching out to 4,470 people. In addition, 350 mosquito nets were distributed in the affected areas by mobilizing their internal prepositioned stocks.

Major Change:

The major change in this sector is to take transitional shelter support out of this plan because the Government has allocated resources to cover the transitional shelter needs. Due to this change, the budget is now readjusted to reach an additional number of beneficiaries for multipurpose cash.



## Multi Purpose Cash

**Budget:** CHF 182,664

**Targeted Persons:** 9,000

### Indicators

Title	Target	Actual
# of households who successfully received cash for basic needs after being identified and processed for transfer	1,800	115

### Progress Towards Outcome

As of 30 October, a total of 525 families in the rural municipalities of Sunkoshi, Golanjor, and Bethanchowk, located in Sindhuli and Kavrepalanchok respectively, successfully received the multi-purpose cash (MPC) assistance. Out of 525 families, DREF supported MPC distribution to 115 families from Kavre. The remaining 410 households from Sindhuli received MPC support from other in country support, which includes American Red Cross, Swiss Red Cross, Danish Red Cross, British Red Cross, and Finnish Red Cross. The distribution is ongoing in the remaining districts.

In collaboration with local government to ensure that all processes were aligned with governmental regulations and expectations, each eligible household would receive 15,000 NPR (as per MEB). Following this approval, the MPC assistance was provided either through bank transfers or cash in hand to the beneficiaries, with all distributions categorized as non-conditional cash grants, allowing families the flexibility to use the funds according to their most pressing needs.



Major Change:

As of 6 November 2024, the target households of DREF operation who receive MPC support has been revised from 800 to 1800 families. It was because the affected families are residing in rented houses or relatives' home. And the detailed assessment data showed that the affected population is much higher than the initial assessment. The initial IFRC-wide target was 2,000 which has been revised to 3,316.



**Budget:** CHF 1,076

**Targeted Persons:** 9,000

## Indicators

Title	Target	Actual
# of volunteers mobilized to conduct health promotion and ECV activities	100	-
# of people reached with health promotion and ECV activities	9,000	-

## Progress Towards Outcome

There is no progress in health promotion and ECV activities because the District Chapter volunteers are more focused on lifesaving activities such as search and rescue and emergency shelter items distribution, NFI and MPC distribution. NRCS is planning to start health promotion and ECV activities in mid-November and expects to complete by December 2024.

During the past month, Danish Red Cross contributed MHPSS services through the NRCS' volunteer's mobilization to affected population. As of 30 October 2024, MHPSS service had reached 2,010 people in Kavre and Sindhuli effectively addressing the immediate psychological needs of those people in need. A total of 40 trained volunteers and Psychological First Aider (PF Aider) were mobilized by NRCS NHQ to the field to deliver psychosocial support to individuals affected by the disaster, particularly those who lost family members, homes, and personal assets. Additionally, an orientation on Protection, Gender, and Inclusion (PGI) was conducted for the volunteers in both Kavre and Sindhuli, while a self-care session was provided to 30 volunteers in Sindhuli to enhance their capacity to support others.

Major Change:

The total target has been revised from 15,000 to 9,000 people to be reached with IFRC DREF support and 15,000 people targeted to be reached from the IFRC-wide support from in-country members (American Red Cross, British Red Cross, Danish Red Cross, Finnish Red Cross and Swiss Red Cross) on health.



**Budget:** CHF 102,292

**Targeted Persons:** 9,000

## Indicators

Title	Target	Actual
# of people (and households) reached by hygiene promotion activities in the response period	9,000	-
# of people reached by the RCRC for improved water source in emergency	1,600	-

# of people reached with dignified hygiene kits	9,000	-
---	-------	---

## Progress Towards Outcome

As of 6 November, 500 people have received dignified hygiene kits. There are 860 kits dispatched by NRCS in different districts. The distribution of dignified hygiene kits is still ongoing.

There is no progress in hygiene promotion activities because the District Chapter volunteers are focusing more on the lifesaving responses, NFI and MPC distribution. NRCS arranges to commence those health promotion and ECV activities in mid-November and expects to complete by December 2024.

The NRCS NHQ deployed NDRT/WRT to the affected districts to conduct quick orientation for district-level volunteers. All district chapters have been mobilizing these volunteers in the affected communities who are engaged in distributing hygiene kits, aqua tab from NRCS existing stock and also conducting hygiene promotion sessions. Detail report about people reached is yet to be received from NRCS District Chapters.

In the past month, following the devastating floods and landslides caused by heavy rainfall, significant efforts have been made in the Sindhuli district to address WASH needs. A comprehensive feasibility survey was conducted to assess and estimate the costs for 34 drinking water supply systems across two municipalities with the support of NRCS engineer team. This assessment is crucial for planning effective interventions to restore safe drinking water access.

NRCS District Chapters have been closely working with the local municipalities to conduct necessary renovations of damaged water facilities.

Major changes:

- The second indicator is revised to "Number of people reached by the RCRC for improved water source in an emergency" targeting 1,600 people.
- Revised target indicator for "Number of people to be reached with dignified hygiene kits" from 2,000 to 9,000.
- Total budget to support WASH has now increased from CHF. 93,589 to 102,292



## Protection, Gender And Inclusion

Budget: CHF 0

Targeted Persons: 0

## Indicators

Title	Target	Actual
# of child safeguarding risk analysis conducted	1	-

## Progress Towards Outcome

NRCS is preparing to conduct child safeguarding risk analysis for the operation, in consultation with District Chapter teams.

NRCS will start conducting orientation on PGI, SGBV, and PSEA in the communities from Mid-November 2024. PGI-related software activities are being implemented integrating with other sectors by mobilizing the volunteers.

Major Change:

Most PGI activities will be supported by IFRC/Danish Red Cross through their bilateral contribution, complementing the IFRC-wide plan. Therefore, the budget has been changed.





## Community Engagement And Accountability

Budget: CHF 6,765

Targeted Persons: 9,000

### Indicators

Title	Target	Actual
# of methods established to communicate with communities about what is happening in the organisation/programme/operation, including selection criteria if these are being used	4	3
# of radio programme/jingle produced and aired through local FM	6	2
% of feedback collected that has been addressed	85	100

### Progress Towards Outcome

As of 30 October 2024, a total of six help desks were established in the districts of Panchthar, Makawanpur, Sindhuli and Kavre. Volunteers engaged in the help desk are supporting municipal authorities in collecting beneficiary details which will be useful for detailed assessment, cash transfer procedures, and for the transitional shelter support to be provided by the Government. The volunteers are also supported to disseminate procedures receiving cash grants for transitional shelter support.

Two radio programmes are aired through local FM stations to share the information of floods situation and NRCS responses.

A total 33 queries were received in the NRCS Namaste Red Cross Hotline 1130 related to flood and landslide operations, all of which have been addressed.

For the MPC distribution, NRCS sent SMS to at least 115 households of Kavre Districts receiving the MPC support informing them about the cash transfer and the process is ongoing for other households receiving MPC.



## Secretariat Services

Budget: CHF 43,168

Targeted Persons: 0

### Indicators

Title	Target	Actual
% of financial reporting compliance to IFRC procedures	100	-
# of Post Distribution Monitoring Survey Conducted	1	-

### Progress Towards Outcome

IFRC operation team supported NRCS and in-country members to develop an IFRC-wide plan and budget and data tracking tools. The NRCS EOC is using tracking tools to collect data from targeted districts.



**Budget:** CHF 36,899

**Targeted Persons:** 100

## Indicators

Title	Target	Actual
# of volunteers insured	100	117
# of lessons learnt workshop conducted	1	-

## Progress Towards Outcome

As of 5 November 2024, 117 volunteers were mobilized to provide immediate relief services in the affected districts.

The IFRC has insured 400 volunteers that will be effective till December 2024.

In addition, 11 technical staff from NRCS NHQ and three from the IFRC Network were mobilized in districts to support district chapters in conducting assessments, relief distribution, cash distribution, etc.

The major reason for the budget change is due to the increased cost of volunteer mobilization and district coverage.

## About Support Services

### How many staff and volunteers will be involved in this operation. Briefly describe their role.

As of 5 November 2024, 117 volunteers were mobilized to conduct field-level response activities. The NRCS District Chapters will continue mobilizing 100 volunteers to conduct activities planned under the DREF operation such as health and hygiene orientation, hand washing demonstration, door-to-door visit for sharing information on MPC, and other CVA activities as well as collecting feedback. Volunteers will play vital role in connecting the gap between the field, and District Chapter and the NHQ as required.

This IFRC-DREF includes a relatively high number of staff (13 full and 7 partial staff) which is due to the large spread of the affected target areas and the modality of IFRC working directly with district chapters. Some roles will be fully or partly supported at NHQ, but mostly the intention is to have a team in each of the district chapters being targeted due to their direct reporting lines to IFRC.

### Will surge personnel be deployed? Please provide the role profile needed.

Field Coordinator surge position has been recruited and deployed on 5 November 2024 and will be based in Banepa, Kavre district.

### If there is procurement, will it be done by National Society or IFRC?

All procurement that cannot be managed by NRCS district chapters (as per NRCS policy) will be managed by the IFRC Country Delegation in close cooperation with NRCS HQ colleagues. IFRC will use existing framework agreements where relevant, in particular for blankets and tarpaulins.

### How will this operation be monitored?

Strong PMER-IM will be practiced in the operation. The participatory and bottom-up planning approaches will be carried out from the planning phase. A detailed assessment will be conducted in the targeted districts to find out the specific needs of target families. Regular and systematic monitoring visits will be carried out by IFRC, NRCS HQ, as well as at the local level. After the implementation of the

operation, PDM and an exit survey will be conducted. The operation will regularly capture the challenges, learnings, and good practices. Similarly, timely situation report dissemination along with monthly reports and a final report will be done.

## **Please briefly explain the National Societies communication strategy for this operation**

The communications strategy for the operation will mainly focus on the followings:

### Visibility:

-Maintain visibility of both IFRC and NRCS while working on the ground by wearing visibility jackets, caps, aprons, or t-shirts for volunteers and staffs during the fieldwork.

### Documentation and dissemination

-Capture in-action, on-the-ground, high-quality photos or film short clips of the volunteers working on the site and engaging with beneficiaries. The pictures and footages will highlight the hard work, moments, and expressions of people and volunteers on the ground. Share all of these with IFRC regional Comms team and plan for the collected materials to be further used as content for social media and reporting purposes.

-Collection of testimonials/stories from the field by volunteers or IFRC staffs from the site. IFRC and NRCS communications focal will support staff and volunteers for the coverage and use the materials for internal and external communications. Ensure materials are shared on IFRC regional and global communication and social media channels as well.

### Partnership:

-IFRC with NRCS communications will strengthen its partnership with local media channels (both online and print) to cover and disseminate the humanitarian need and response of NRCS and IFRC in Nepal. Share any published pieces with regional Communications to disseminate on regional / global channels.



# Budget Overview



## DREF OPERATION

- Nepal Red Cross Society  
Flood Response Operation 2024

### Operating Budget

<b>Planned Operations</b>	<b>440,650</b>
Shelter and Basic Household Items	147,853
Livelihoods	0
Multi-purpose Cash	182,664
Health	1,076
Water, Sanitation & Hygiene	102,292
Protection, Gender and Inclusion	0
Education	0
Migration	0
Risk Reduction, Climate Adaptation and Recovery	0
Community Engagement and Accountability	6,765
Environmental Sustainability	0
<b>Enabling Approaches</b>	<b>80,067</b>
Coordination and Partnerships	0
Secretariat Services	43,168
National Society Strengthening	36,899
<b>TOTAL BUDGET</b>	<b>520,718</b>

*all amounts in Swiss Francs (CHF)*



# Contact Information

For further information, specifically related to this operation please contact:

**National Society contact:** Buddhi Sagar Shrestha, Director, DM Department, sagar.shrestha@nracs.org, +977 9803202129

**IFRC Appeal Manager:** Azmat Ulla, Head of Country Delegation Nepal, azmat.ulla@ifrc.org, +9779851047071

**IFRC Project Manager:** Sofia Malmqvist, Programme and Operations Coordinator, sofia.malmqvist@ifrc.org, +9779851221996

**IFRC focal point for the emergency:** Farah Nur Wahyuni Zainuddin, Operations Coordinator, OpsCoord.SouthAsia@ifrc.org

**Media Contact:**

Bipul Neupane, Director, Humanitarian Values and Communication Department, bipul.neupane@nracs.org, +977 9851012617

[Click here for the reference](#)

