

IN SUPPORT OF THE MALAWI RED CROSS SOCIETY



33

National Society branches



1,824

National Society local units



69,813

National Society volunteers



260

National Society staff

PEOPLE REACHED

Emergency Operations



4,325,845

Climate and environment



3,395,555

Disasters and crises



231,706

Health and wellbeing



7,782,576

Migration and displacement



102,270

Values, power and inclusion



5,200

FINANCIAL OVERVIEW

in Swiss francs (CHF)

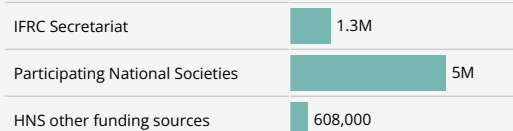
Country	Funding Requirement	21.7M	
IFRC Secretariat	Emergency Operations	Funding Requirement	5.3M
		Funding	4.5M
		Expenditure	3.5M
	Longer-term	Funding Requirement	5.1M
		Funding	1.6M
		Expenditure	260,000
Participating National Societies	Funding Requirement	6.2M	
	Funding	6.4M	
	Expenditure	6.0M	
HNS other funding sources	Funding Requirement	5.1M	
	Funding	608,000	

Malawi Red Cross Society

Overview



Funding Sources

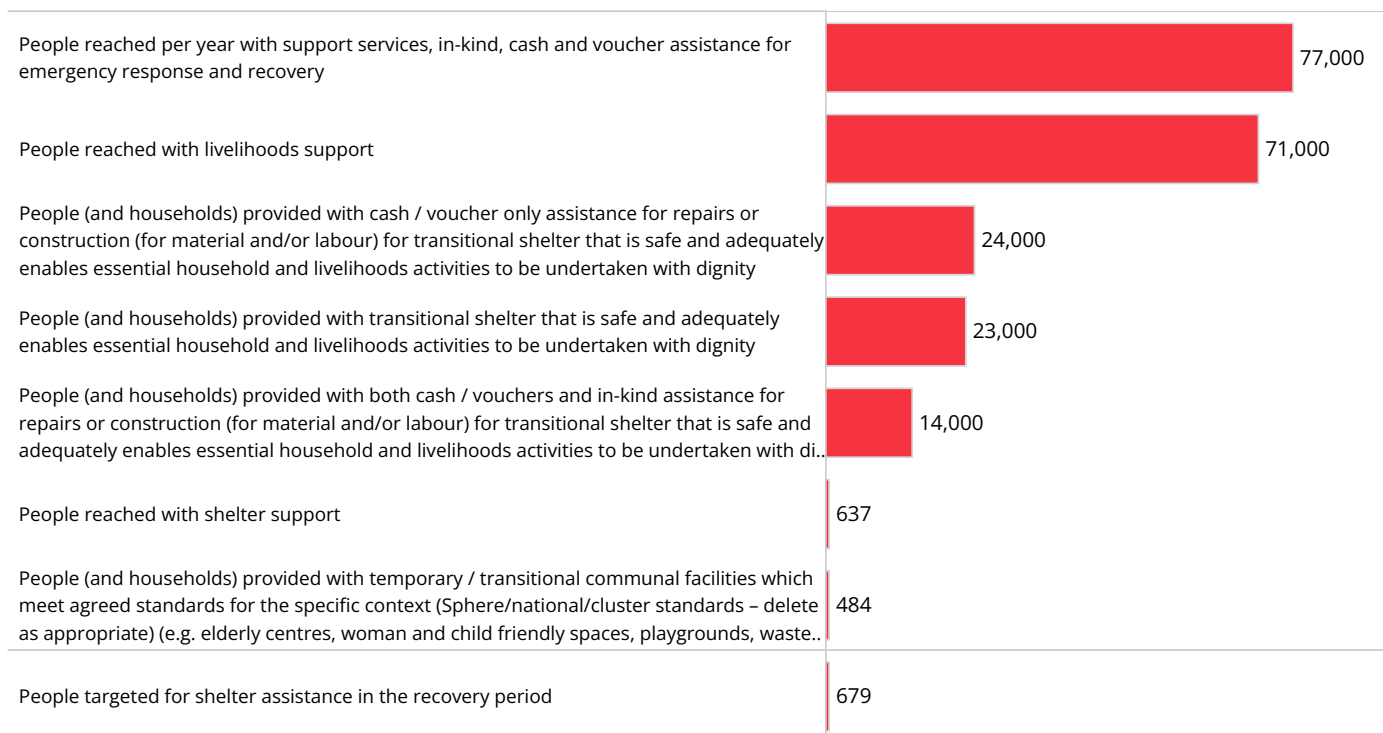


Appeal number **MAAMW003**

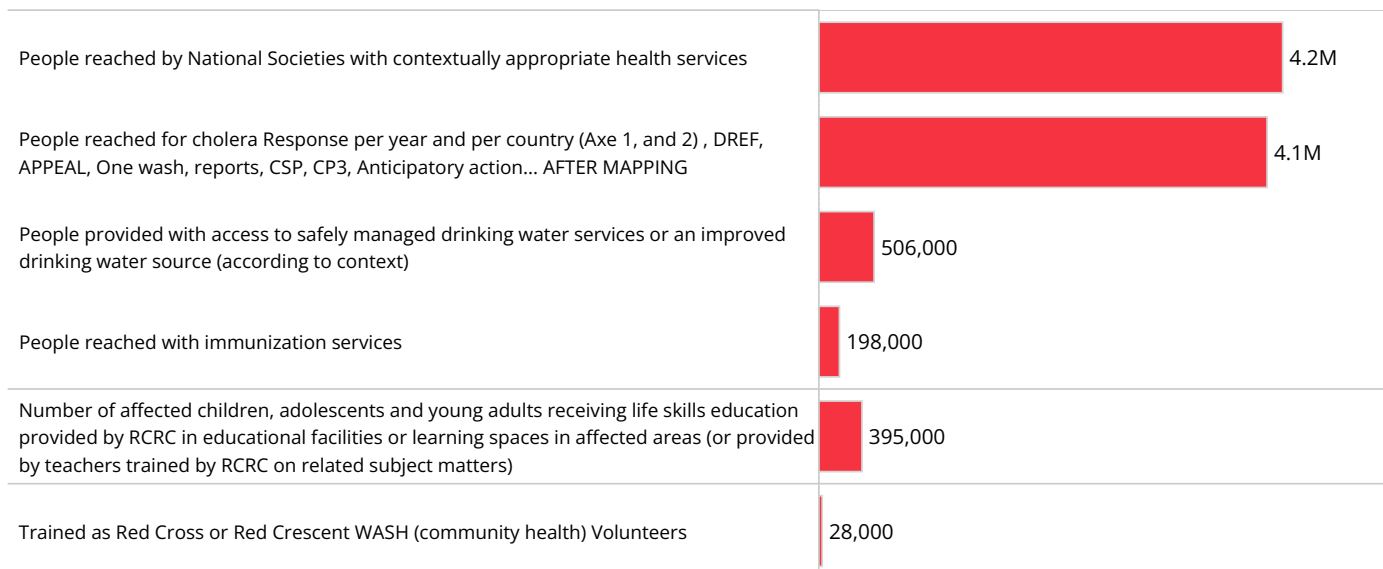
In addition to: CHF 5M Funding requirement for newly launched emergency appeals+

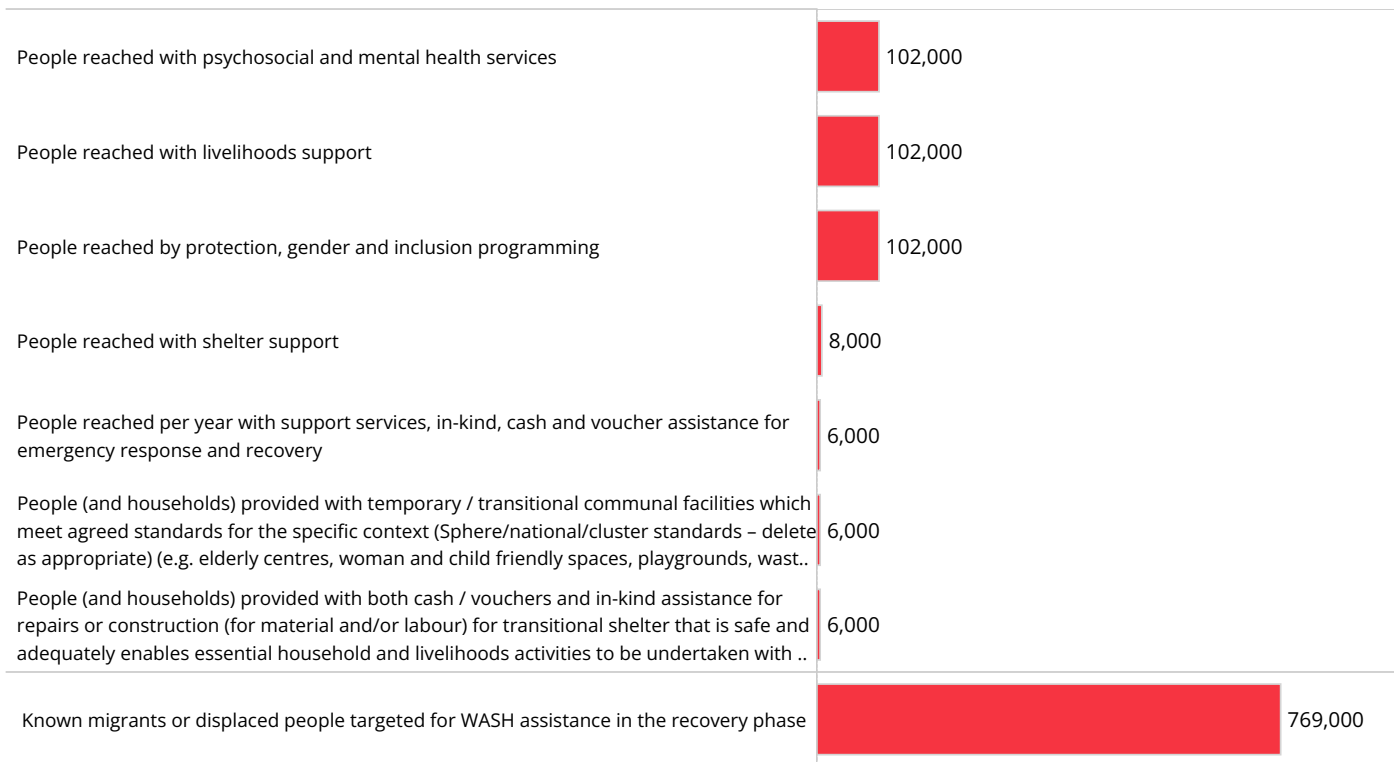
ONGOING EMERGENCY INDICATORS

MDRMW018 / TC Freddy



MDRMW017 / Cholera





STRATEGIC PRIORITIES

Climate and environment	Developing and implementing strategies and plans that address rising climate and environmental risks?	Yes
	Implementing nature-based solutions (including those with a particular focus on the planting of trees and mangroves)?	Yes
	People reached with activities to address environmental problems	1.4M
	People reached with activities to address rising climate risks	3.4M
Disasters and crises	People reached per year with support services, in-kind, cash and voucher assistance for emergency response and recovery	232,000
	People reached with disaster risk reduction	79,000
	People reached with livelihoods support	71,000
	People reached with shelter support	14,000
	Percentage of humanitarian assistance delivered using cash and vouchers	76%
Health and wellbeing	People covered with activities that aim at increase of knowledge about the importance of using safe drinking water and storage, using latrines or toilets and hand washing at crucial..	5M
	People donating blood	5,000
	People reached by National Societies with contextually appropriate health services	7.8M
	People reached by National Societies with contextually appropriate water, sanitation and hygiene services	6.5M
	People reached with immunization services	1.2M
	People reached with psychosocial and mental health services	2,000
	People trained by National Societies in first aid	8,000
	Trained as Red Cross or Red Crescent WASH (community health) Volunteers	34,000
Migration and displacement	Migrants and displaced persons reached with services for assistance and protection	5,000
Values, power and inclusion	Is Community Engagement and Accountability integrated and institutionalized in the National Society policies, operations, and procedures (with clear benchmarks)?	Yes
	People reached by protection, gender and inclusion programming	2,000
	People reached by RCRC educational programmes	793
	People whose access to education is facilitated through National Society programming	575

ENABLING FUNCTIONS

National Society development	National Society covers health, accident and death compensation for all of their volunteers	Yes
	One National Society Development plan in place	Yes
	Strategy for strengthening the auxiliary role developed or implemented	Yes
	Youth engagement strategy developed or in place	Yes
Humanitarian diplomacy	Participation in IFRC-led communication campaigns	Yes
Accountability and agility	National Society has a PSEA Action Plan to enforce prevention and support survivors (cumulative)	Yes
	National Society has a PSEA policy to enforce prevention and support survivors (cumulative)	Yes

IFRC NETWORK SUPPORTED ACTIVITIES

National Society	Funding Reported	Bilateral Support						Enabling Functions	Multilateral Support
		Climate and environment	Disasters and crises	Health and wellbeing	Migration and displacement	Values, power and inclusion	Through IFRC		
American Red Cross	87,000							✓	
Belgian Red Cross	555,000								
British Red Cross								✓	
Canadian Red Cross Society	130,000							✓	
Danish Red Cross	8.2M								
Finnish Red Cross	470,000								
Icelandic Red Cross	578,000								
Italian Red Cross	286,000								
Japanese Red Cross Society								✓	
Monaco Red Cross								✓	
Netherlands Red Cross	956,000								
Norwegian Red Cross	479,000							✓	
Swedish Red Cross								✓	
Swiss Red Cross	4.8M								

Total Funding Reported **CHF 16.6M**

OVERALL PROGRESS

Context

In 2023, the political situation in Malawi continued to remain stable. The country's economy, however, has been significantly weakened by frequent shocks coupled with macro-fiscal imbalances, and agricultural output has grown only marginally since 2023, and inflation remained high at 28.6 per cent as of July 2023. While there were instances of civil strife emanating from high inflation and scarcity of foreign currency in the country, the government has mostly managed to defuse them. Food prices in Malawi witnessed a continual increase, reaching 39.3 per cent year-on-year in July 2023, mainly driven by supply constraints, according to the [World Bank](#). The Government managed to negotiate for the restoration of the International Monetary Fund (IMF) [extended credit facility](#). Global commodity price rise, fuel costs, the impact of the conflict in Ukraine, the depreciation of the kwacha and other evolving economic conditions.

Malawi is prone to disease outbreaks and faced a significant cholera outbreak in 2022 and 2023. The country also faces major climate change and environmental challenges, and recent high temperatures and weather extremes have had a serious impact on environmental ecosystems. In March 2023, Tropical Storm Freddy caused destructive flash floods and landslides. These challenges are compounded by factors such as deforestation, limited water supply, old farming practices and declining fisheries.

Key achievements

Climate and environment

In 2023, the Malawi Red Cross Society advanced climate and environmental initiatives through both emergency response and long-term programming. The National Society conducted community simulation exercises to test flood response plans, disseminated contingency plans and seasonal forecasts in 11 districts, and implemented early warning and anticipatory actions ahead of Tropical Storm Freddy. It promoted locally led climate adaptation by conducting climate assessments, training staff and volunteers, and planting approximately 65,000 trees across 15 districts. Additionally, the National Society worked with farmers on crop production and manure management, securing funding to expand adaptation efforts in three districts.

Disasters and crises

In 2023, the Malawi Red Cross Society undertook comprehensive disaster and crisis interventions. The National Society strengthened the national emergency operations centre (EOC), trained first responders in emergency [first aid](#), and established community feedback mechanisms. It provided unconditional [cash transfers](#), supported school rehabilitation by distributing materials to learners, and facilitated the construction of houses. The National Society also handed over a pilot community EOC and delivered resilient shelters to Tropical Storm Ana survivors. To enhance livelihoods, it distributed cash to households and trained communities in climate-smart agriculture.

Health and wellbeing

In 2023, the Malawi Red Cross Society expanded health services by constructing a health post and volunteer resource unit and contributing to the National Community Health Strategy 2022-2030. The National Society trained volunteers in epidemic preparedness, [WASH](#)-focused outbreak response, community engagement, and psychosocial first aid ([PFA](#)), supporting cholera operations and adhering to IFRC standards. It enhanced first aid through staff and volunteer training, home-based care initiatives, and revised its [mental health and psychosocial support](#) framework. Blood donation campaigns increased voluntary donations through radio, mobile van publicity, and community visits. The National Society scaled up WASH efforts by training volunteers in water treatment, distributing water treatment chemicals, rehabilitating boreholes, and monitoring water quality. Temporary latrines were constructed, and sanitation facilities decommissioned to improve sanitation and hygiene.

Migration and displacement

In this reporting period, the Malawi Red Cross Society has supported migrants through the restoring family links ([RFL](#)) programmes. The services offered include tracing requests, Red Cross messages, free phone calls, free internet, registration and follow up of unaccompanied minors and phone charging services. The National Society conducted a number of these listed activities and has also made progress to ensure that both staff and community members

understand the services that the National Society plays in ensuring that people displaced are traced and reunited with families/relatives.

Values, power and inclusion

In 2023, the Malawi Red Cross Society integrated protection, gender, and inclusion (PGI) into its projects by finalizing a PGI assessment and developing an implementation plan, ensuring these priorities were addressed during project planning. The National Society engaged with government and civil society to act on community feedback, trained members on child protection, supported the national Day of African Child commemoration, and established child protection committees. It provided safe boarding facilities for schoolgirls, food supplements for childcare centres, and trained staff on preventing sexual exploitation and abuse (PSEA) and addressing sexual and gender-based violence (SGBV). The National Society also enhanced accountability through community engagement and information sharing to build trust and increase program impact.

Enabling local actors

In 2023, the Malawi Red Cross Society developed a comprehensive National Society development framework and explored financial sustainability strategies, including raffle draws, partnerships, office rentals, membership cards, and public appeals. The National Society began a “new way of working” approach to improve efficiency and delivery of humanitarian services while fostering strong partnerships with government and communities. It lobbied for the recognition of its auxiliary role in health programming, supported the Ministry of Health in developing a non-communicable diseases communication strategy, and participated in national meetings to raise awareness of its interventions and health crises.

The National Society also implemented a humanitarian diplomacy approach, engaging stakeholders and donors, mapping priorities, and building public awareness. It developed a monitoring and evaluation framework to ensure quality standards, track operations, and maintain accountability through feedback mechanisms and beneficiary satisfaction surveys. Safeguarding measures were strengthened, including adherence to PSEA and child safeguarding standards, alongside a completed child safeguarding risk analysis to ensure the protection of vulnerable populations.

IFRC NETWORK ACTION

ONGOING EMERGENCY RESPONSE

For real-time information on IFRC emergencies, visit IFRC GO page [Malawi](#).

NAME OF OPERATION	Tropical Storm Freddy Floods
MDR-CODE	MDRMW018
DURATION	9 months (17 March 2023 to 31 December 2023)
FUNDING ALLOCATION	Federation-wide funding requirements: CHF 6 million IFRC Secretariat funding requirements: CHF 5 million
PEOPLE TO BE ASSISTED	160,000
LINK TO EMERGENCY APPEAL	Tropical Storm Freddy Floods Emergency Appeal
LINK TO OPERATIONAL STRATEGY	Tropical Storm Freddy Floods revised Operational Strategy
LINK TO OPERATION UPDATE	Operations Update No.3

Malawi is one of the countries greatly affected by Tropical Cyclone Freddy, among others, Mozambique, and Madagascar. On 4th March 2023, the Department of Climate Change and Meteorological Services issued a warning informing the Malawi nation that Freddy had developed into a Moderate Tropical Storm and was continuing to intensify in the Mozambique Channel and other models indicated that there was a likely high chance of Freddy recurring towards Mozambique coast.

Subsequent heavy rains associated with strong winds started on the 11th and 12th of March 2023. Tropical Cyclone Freddy lashed most of the districts bringing strong winds and heavy rains. In a matter of hours' communities were being washed out by significant floods and mudslides. It was also revealed that most risk areas were also the same as that of TC Ana. This increased the vulnerabilities of the people as they were not fully recovered from the latter.

Short description of emergency operational strategy

Through this operational strategy, the National Society worked to support 160,000 people most affected by the cyclone (32,000 households) to meet their essential needs in a safe and dignified manner, recover from the crisis and strengthen their resilience to future shocks. The National Society prioritized seven of the hardest hit districts: Blantyre; Nsanje; Chikwawa; Mulanje; Phalombe; Thyolo; and Mangochi. The overall strategy worked to ensure that immediate and early recovery needs were met in a dignified manner and affected communities adopted the "building back better" approach resulting in communities that are more resilient in the face of recurrent shocks. The response then expanded to support displaced families to return to their areas of origin and rebuild their homes, livelihoods, community, and social infrastructure with a longer-term, community-based disaster risk reduction approach.

According to [last operations update](#), the Malawi Red Cross Society provided targeted support to communities affected Cyclone Freddy that took into consideration the multifaceted needs of affected households. The interventions undertaken by the National Society include shelter, housing and settlements support, livelihoods support that target income generation, multi-purpose cash support, health and care initiatives, WASH interventions, PGI and CEA activities, among others.

NAME OF OPERATION	Malawi Cholera Response
MDR-CODE	MDRMW017
DURATION	9 months (23 January 2023 to 30 September 2023)
FUNDING ALLOCATION	Federation-wide funding requirements: CHF 5.2million IFRC Secretariat funding requirements: CHF 3.5 million
PEOPLE TO BE ASSISTED	2,184,590
LINK TO EMERGENCY APPEAL	Malawi Cholera Response Emergency Appeal
LINK TO OPERATIONAL STRATEGY	Malawi Cholera Response operational strategy
LINK TO OPERATION UPDATE	Operations Update No. 2

In 2023, Malawi experienced the worst cholera outbreak in two decades. Cholera is an acute diarrheal disease spread via contaminated water and food which can cause severe dehydration in children and adults alike. It takes between 12 hours and five days for an infected person to show symptoms after ingesting contaminated food or water and can kill within hours if untreated. Cholera is not new to Malawi. However, this outbreak was atypical, having continued to propagate from the dry season to the current rainy season, which increases the risk of the disease spreading. The first cases were reported in February 2022 in Machinga district, and an outbreak was declared in March 2022. Initially limited to the southern part of the country, it spread throughout Malawi across 29 health districts putting at risk over 10 million people including more than five million children. On 5 December 2022, the president declared the cholera outbreak a "Public Health Emergency".

The main risk driving factors of the cholera outbreak were unsafe water, poor sanitation, and lack of hygiene. Secondly, the existing response system had gaps, such as the inadequate and long distance between the health system and response areas, resulting in delayed access to rehydration treatment. There was also insufficient community awareness

about the disease and how to support the affected people with oral rehydration therapy, linked with generalized stigmatisation of those affected.

Short description of the emergency operational strategy

Through this operational strategy, the Malawi Red Cross Society worked to contribute to the Government of Malawi's Cholera Response Plan in controlling and reducing the cholera outbreak thereby reducing morbidity and mortality, reaching at least 2 million people from September 2022 to September 2023, focusing on 15 of the most affected districts and vulnerable communities. The National Society scaled up and expanded activities started with the DREF launch in September 2022. It focused its response on interrupting transmission and improving case management of cholera at the community and facility levels in the affected districts.

In its [latest operations update](#), the Malawi Red Cross Society provided targeted support to people affected by the cholera outbreak. The National Society's interventions under this emergency appeal included community health and medical services, WASH interventions, PGI programming and CEA initiatives within the affected regions.

STRATEGIC PRIORITIES



Climate and environment

Progress by the National Society against objectives

The Malawi Red Cross Society holds that the systematic integration of environmental concerns in short and long-term programming makes activities more effective, contributes positive to sustainable development, and lays a foundation for conflict resolution and peacebuilding. In 2023, through its emergency response and under its long-term programming, the Malawi Red Cross Society undertook various initiatives under climate and environment. In February 2023, the National Society facilitated community simulation exercises aimed at checking the effectiveness of the electronic contingency plans amongst the [early warning](#) teams and the functionality of different community-based structures about flood response.

The Malawi Red Cross Society's impact-based forecast dashboard has gone through different co-design sessions and has been tested by various stakeholders to ensure compliance with different contexts. To ensure that communities are aware of impending hazards, the National Society conducted community sensitization/dissemination of contingency plans and dissemination of a down-scaled seasonal forecast in 11 districts across central and southern regions in the country. In its response to Tropical Storm Freddy, the National Society disseminated early warning and implemented [anticipatory action](#) measures before the tropical storm had made landfall in the country.

In 2023, the Malawi Red Cross Society also rolled out a project aimed at promoting locally led climate adaptation activities. A climate screening assessment and validation workshop was carried out with capacity building training for staff and volunteers on topics such as climate change adaptation, anticipatory actions, food security and livelihood. The National Society, in its tree-planting initiative, planted approximately 65,000 trees in 15 districts. It also conducted manure promotional campaigns, worked with farmers on crop production and post-harvest yielding, and manure marking.

The Malawi Red Cross Society has secured funding for the implementation of the locally led adaptation project to be implemented in three districts.

IFRC network joint support

The IFRC supported the Malawi Red Cross Society's initiatives under climate and environment with financial and technical assistance in areas such as capacity building training, orientation on climate action, and enhancing the National Society's engagement with various stakeholders.

The **Swiss Red Cross** supported the Malawi Red Cross Society in manure promotional campaigns and other activities.



Disasters and crises

For real-time information on emergencies, visit IFRC GO page [Malawi](#).

Progress by the National Society against objectives

In 2023, the efforts of the Malawi Red Cross Society under disasters and crises have been multifaceted, covering many areas of intervention to effectively respond to disasters and crises. The National Society supported the national emergency operation centre (EOC) through capacity strengthening training while first responders and committees were trained on [first aid](#) during emergencies. For effective response during disasters, the National Society set up feedback mechanism in various places for data collection and handling of issues from the communities. In its efforts to rehabilitate schools, the National Society also provided school materials that benefited learners in targeted schools in the country.

The Malawi Red Cross Society supported people with unconditional [cash transfers](#) and conducted general awareness sessions on shelter and settlements through door to door, van publicity and orientation. The National Society also supported the construction of houses and also supported the handover of a pilot community emergency operations centre (EOC). The capacity of volunteers was built in early warning and other [disaster risk management](#) concepts. The Malawi Red Cross Society also conducted PASSA training for volunteers in multiple districts and prepositioned emergency stock in warehouses.

As part of its efforts to strengthen safety for communities in disaster and crisis-affected areas, the National Society participated in [shelter](#) design validation meeting at the Ministry of Lands for different shelter designs. The approved designs will be shared with citizens to promote safe housing construction. The National Society handed over resilient, multi-hazard shelter to survivors of Tropical Storm Ana and also supported households with temporary shelter materials such as tarpaulins and shelter toolkits. The National Society also supported decommissioning of camps under shelter clusters and is now finalizing the relief phase of the operation with the distribution of cash.

In order to support communities in strengthening their livelihoods after disaster, the Malawi Red Cross Society worked on interventions such as capacity strengthening of its branches, preparation of goat distribution exercises with the Ministry of Agriculture, distribution of cash to households in instalments, and training people on climate-smart agriculture.

IFRC network joint support

The IFRC supported the Malawi Red Cross Society's efforts under disasters and crises by providing both financial and technical support for enhancing the National Society's provision of services for effective and timely response during disasters. The National Society's shelter strategy with developed with support from the IFRC and additional mechanisms such as the IFRC disaster response emergency fund ([DREF](#)) and the emergency appeal are activated for timely response to disasters in the country.

The British Red Cross and the **Danish Red Cross** supported the National Society in the distribution of shelter materials in the aftermath of a tropical storm.

The **Swiss Red Cross** supported the National Society in the distribution of items for livelihood support.



Health and wellbeing

Progress by the National Society against objectives

In 2023, to sustain health services in harder-to-reach areas, the Malawi Red Cross Society completed the construction of health post and volunteer resource unit. The National Society supported the development of the National Community Health Strategy 2022-2030 and participated in a number of health and water, sanitation and hygiene ([WASH](#)) international/global commemoration events. Volunteers of the National Society were trained in epidemic preparedness and response in communities, focusing on epidemic control for volunteers, branch outbreak response with focus on WASH, community engagement and accountability ([CEA](#)), and psychosocial first aid (PFA). Volunteers were also mobilized, insured and engaged to provide support for the cholera response operation. Each of these

volunteers underwent comprehensive briefings and the completion of minimum response standard role training, security training and adherence to the IFRC code of conduct.

In its efforts to improve first aid, the Malawi Red Cross Society trained staff and volunteers on first aid, planned first aid coverages through television programmes, and home-based care. The National Society revised its [mental health and psychosocial support services framework](#) including the implementation plan.

In order to increase voluntary non-remunerated blood donation, the National Society continued to carry out blood donation sensitization activities through radios, mobile van publicity, open days and household visits. The increase in blood donation is attributed to increased scope of blood donor recruitment and the introduction of blood donor recruitment activities in the integrated community-based project.

The Malawi Red Cross Society joined hands with the UNICEF to scale up WASH efforts where the National Society trained volunteers on household water treatment and safe storage and distributed water treatment chemicals through oral rehydration points. The National Society trained school health and nutrition teachers in hygiene and sanitation, rehabilitated boreholes and solar water pumps, and targeted people with safe water supply assistance through household water treatment. The National Society also conducted water quality-monitoring tests for households and sources using bacteriological H2S test kits. For safely managed sanitation, the National Society constructed temporary latrines and decommission sanitation facilities.

IFRC network joint support

The IFRC provided both financial and technical support to the Malawi Red Cross Society in its objectives under health and wellbeing. The National Society was supported in its efforts to target the capacity of both staff and volunteers in areas such as WASH intervention, first aid training, community-based health and first aid ([CBHFA](#)), blood donation, among others.

The Swiss Red Cross provided support to the National Society in community-based health project.



Malawi Red Cross Society volunteers get water from a borehole to bring to a cholera treatment centre outside Mangochi in south-eastern Malawi. (Photo: IFRC).



Migration and displacement

Progress by the National Society against objectives

The Malawi Red Cross Society has supported migrants through the restoring family links (RFL) programmes. The RFL programme provides services at the Dzaleka refugee camp in the Dowa district and the Karonga transit shelter in Karonga district. The services offered include tracing requests, Red Cross messages, free phone calls, free internet, registration and follow up of unaccompanied minors and phone charging services. The National Society conducted a number of these listed activities and has also made progress to ensure that both staff and community members understand the services that the National Society plays in ensuring that people displaced are traced and reunited with families/relatives.

IFRC network joint support

The IFRC supports the Malawi Red Cross Society's initiatives to target migrants through the provision of essential services that take into consideration emerging needs. It also supports the National Society in enhancing its engagement to advocate with relevant stakeholders for the needs of migrants.

The ICRC provides support to the National Society through the restoring family links (RFL) programme.



Values, power and inclusion

Progress by the National Society against objectives

The Malawi Red Cross Society continues to champion protection, gender and inclusion (PGI) in the implementation of its activities. The National Society finalized the PGI assessment and developed an implementation plan as PGI currently remains one of the key topics addressed during project planning as one way of ensuring budgetary allocation.

At the end of 2023, the Malawi Red Cross Society support meetings with different government and civil society institutions to follow up on issues raised through suggestions boxes under the wider spectrum of community engagement and accountability (CEA). The National Society acted on the feedback received and its members trained in various areas such as child protection issues continue to raise awareness against offences. The National Society also supported the celebration of the Day of African Child national commemoration event under the theme "The right of the child in the digital environment". The National Society supported the establishment and revamping of child protection committees in multiple districts.

Other activities conducted by the National Society in 2023 include provision of safe boarding facilities for schoolgirls, community-based childcare centres food supplements, training child protection workers in safeguarding the rights of children, carrying out assessments of intended beneficiaries targeted by the National Society, briefing staff and volunteers on the IFRC code of conduct and the prevention of sexual exploitation and abuse (PSEA), distribution of information, education, community (IEC) materials with key referral pathways for sexual and gender-based violence (SGBV), among others.

The National Society has put in place a system to ensure accountability to beneficiaries that recognizes community ownership and their rights. Accountability has proven to increase programme impact, and the community engagement and accountability (CEA) builds trust and acceptance. The National Society facilitates sharing information about response activities, selection criteria, and distribution processes with communities through meeting and other activities. The Malawi Red Cross Society has also carried out training on CEA and has conducted community engagement meetings on the intended projects.

IFRC network joint support

The IFRC provides both financial and technical support to the National Society's efforts in ensuring that its services take into consideration PGI and CEA mechanisms. The National Society is supported in its initiatives to make its programmes more inclusive and to take into account community feedback to assess the impact of the National Society's activities on ground.

ENABLING LOCAL ACTORS



Strategic and operational coordination

IFRC membership coordination

IFRC membership coordination involves working with member National Societies to assess the humanitarian context, humanitarian situations and needs; agreeing on common priorities; jointly developing common strategies to address issues such as obtaining greater humanitarian access, acceptance and space; mobilizing funding and other resources; clarifying consistent public messaging; and monitoring progress. This also means ensuring that strategies and programmes in support of people in need, incorporate clarity of humanitarian action, links with development assistance, and efforts to reinforce National Societies in their respective countries, including through their auxiliary role.

Partner National Societies supporting the Malawi Red Cross Society through various initiatives include the **British Red Cross**, the **Danish Red Cross**, and the **Swiss Red Cross**.

Movement coordination

The Malawi Red Cross Society ensures regular exchanges with the IFRC, the International Committee of the Red Cross and participating National Societies, for the alignment of support and action between Movement partners. In times of emergencies, closer coordination is organized. This is carried out in line with the [Strengthening Movement Coordination and Cooperation \(SMCC\)](#) principles, and the newly-adopted [Seville Agreement 2.0](#).

The ICRC has no permanent presence in Malawi but makes regular visits to support restoring family links services in emergencies.

External coordination

The Malawi Red Cross works closely with the Government, which leads the overall coordination of any humanitarian emergency or disaster response through its Department of Disaster Management Affairs, which sits under the Office of the President. The disaster management structure stems from the disaster technical working group at the national level; civil protection committees at the district level; area civil protection committees at the traditional authority level; and civil protection committees at the group village level. The National Society is a member of the civil protection committee and the national disaster preparedness and relief committee that comprises the principal secretaries of all key ministries and departments, and three non-governmental organizations. It is also a member of the national disaster technical working group.

There is a humanitarian country team in Malawi chaired by UNDP, which is the coordination platform for all humanitarian bodies to ensure coordinated strategies and approaches. The National Society participates in all coordination meetings at the national and district levels, including clusters for shelter and camp management, search and rescue, food security and water, sanitation and hygiene. In addition to being a member of all clusters, it is also a sub-lead for the early warning cluster.

The Malawi Red Cross and IFRC co-lead the Shelter Cluster in Malawi, with the National Society also participating in its working groups. The Global Shelter Cluster (GSC) is an Inter-Agency Standing Committee (IASC) coordination mechanism and IFRC has been leading the shelter cluster in disaster contexts since the establishment of the cluster approach in 2005. This critical mandate places IFRC as one of the lead agencies in the international humanitarian coordination system. IFRC leverages its leadership position in the shelter cluster for improved coordination, stronger policies and standards across the sector, and better support for affected people in their recovery. The Global Shelter Cluster and country Shelter Clusters work collectively with national response actors, including local and national governments, to support people with timely, effective and predictable shelter and settlement responses. As such, the Malawi Red Cross' shelter cluster leadership role significantly contributes towards the localization efforts of the international humanitarian system. Its local knowledge and understanding of the context, along with its network and established community relationships, enhance the effectiveness, relevance, and connectedness of the overall humanitarian shelter response.



National Society development

Progress by the National Society against objectives

The Malawi Red Cross Society is currently developing a comprehensive National Society development framework outlining key priorities for the National Society. In its financial sustainability efforts, the National Society explored several strategies such as raffle draws, conducted partnership meetings, reviewed office rentals, produce volunteer membership cards, flag weeks, and conducted public appeals through newspapers and social media. The National Society has also embarked on new ways of working journey which complements the unified planning. The new way of working is expected to bring efficiency and effective delivery of humanitarian services to the communities whilst building effective partnerships with the Government, other organizations and communities.

IFRC network joint support

The IFRC provides support to the Malawi Red Cross Society in its objectives under National Society development. IFRC funding mechanisms such as the IFRC capacity building fund (CBF), the National Society Investment Alliance (NSIA), and the Empress Shoken Fund are utilized by the National Society solely for the improvement and development of the National Society.



Humanitarian diplomacy

Progress by the National Society against objectives

In 2023, the Malawi Red Cross Society lobbied for recognition of its auxiliary role on health programming with various stakeholders. It supported the Ministry of Health in the development of a communication strategy for non-communicable diseases in Malawi and participated in national-level meetings to bring awareness to the National Society's interventions and health crises in the region.

The humanitarian diplomacy approach consists of identification of key stakeholders and their needs/interests, engaging in formal and informal meetings with decision-makers and donors, mapping their priorities and developing a common understanding of problems and solutions while working to create greater public awareness of issues in the country.

IFRC network joint support

The IFRC supports the Malawi Red Cross Society with technical and financial support in its humanitarian diplomacy, which consists of supporting the National Society's efforts to increase engagement with relevant stakeholders and to advocate for the National Society's interventions to bolster its image as the primary responder during disasters in the country.



Accountability and agility (cross-cutting)

Progress by the National Society against objectives

The Malawi Red Cross Society developed a monitoring and evaluation framework to monitor its work and will routinely carry out a self-assessment against indicators to ensure that its operations are on track, that its products and services meet the minimum quality standards, and that its operations remain relevant to the communities. Its monitoring system will also check whether the accountability systems work effectively, while regular feedback mechanisms, post-distribution, and beneficiary satisfaction surveys integrates complaints mechanism.

The National Society has made progress in ensuring that safeguarding measures are in place and that the National Society staff and volunteers conform with the prevention of sexual exploitation and abuse (PSEA) and child safeguarding standards, including the completion of the child safeguarding risk analysis.

IFRC network joint support

The IFRC provides support to the National Society's efforts to enhance its accountability and agility. This consists of both technical and financial support to the National Society in its efforts to bolster accountability.



The International Federation of Red Cross and Red Crescent Societies (IFRC)

is the world's largest humanitarian network, with 191 National Red Cross and Red Crescent Societies and around 15 million volunteers. Our volunteers are present in communities before, during and after a crisis or disaster. We work in the most hard to reach and complex settings in the world, saving lives and promoting human dignity. We support communities to become stronger and more resilient places where people can live safe and healthy lives, and have opportunities to thrive.

DATA SCOPE AND LIMITATIONS

- **Missing data and breakdowns:** National Societies have diverse data collection systems and processes that may not align with the standardized indicators. Data may not be available for some indicators, for some National Societies. This may lead to inconsistencies across different reporting tools as well as potential under or over-estimation of the efforts led by all.
- **Reporting bias:** The data informing this Federation-wide overview is self-reported by each National Society (or its designated support entity) and which is the owner and gatekeeper, and responsible for accuracy and updating. IFRC tries to triangulate the data provided by the National Societies with previous data and other data in the public domain.

ADDITIONAL INFORMATION

- [IFRC Malawi 2023 Financial Report](#)

Note: For emergencies for which a financial report is not yet available, see [MDRMW017](#) and [MDRMW018](#).

- [IFRC network country plans](#)
- [Subscribe for updates](#)
- [Live Disaster Response Emergency Fund \(DREF\) data](#)
- Operational information: [IFRC GO platform](#)
- National Society data: [IFRC Federation-wide Databank and Reporting System](#)
- [Evaluations database](#)

Contact information

Chifundo Kalulu

Ag. Secretary General
Malawi Red Cross Society
T +265 888 411211
ckalulu@redcross.mw
redcross.mw

John Roche

Head of Delegation
IFRC Country Cluster Delegation for Zimbabwe,
Zambia & Malawi, based in Harare
T +263 77218648
john.roche@ifrc.org

Louise Daintrey-Hall

Head of Strategic Engagement
& Partnerships
IFRC Regional Office for Africa, Nairobi
T +254 110 843978
louise.daintry@ifrc.org

Sumitha Martin

Lead
IFRC Global Strategic Planning & Reporting Centre
New Delhi
sumitha.martin@ifrc.org