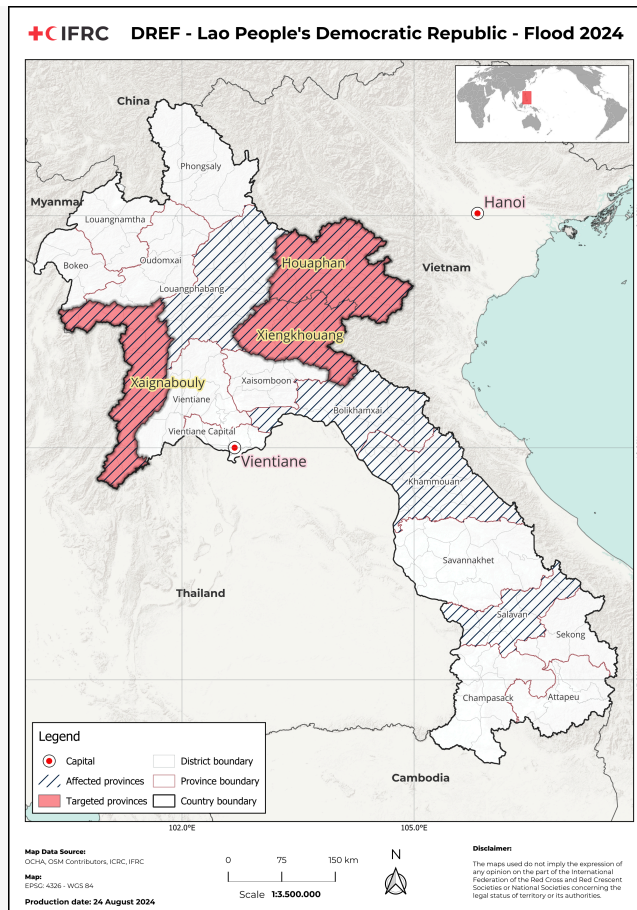




A view of a house inundated by floodwater in Xaignabouli. The surrounding area is overtaken by the flood, illustrating the impact on homes and communities in the affected areas (Photo: Lao National Radio)

| | | | |
|--|---|--|--------------------------------------|
| Appeal: MDRLA010 | Country: Lao People's Democratic Republic | Hazard: Flood | Type of DREF: Assessment |
| Crisis Category: Yellow | Event Onset: Sudden | DREF Allocation: CHF 26,655 | |
| Glide Number: FF-2024-000156-LAO | People Affected: 22,800 people | People Targeted: 8,712 people | |
| Operation Start Date: 25-08-2024 | Operation Timeframe: 2 months | Operation End Date: 31-10-2024 | DREF Published: 26-08-2024 |
| Targeted Areas: Houaphan, Xaignabouli, Xiangkhouang | | | |

Description of the Event



Map of Affected and Targeted Areas (Map: IFRC,IM)

What happened, where and when?

The Department of Meteorology and Hydrology of Lao PDR issued urgent flood warnings on 22 July 2024 due to Tropical Cyclone Prapiroon, which was moving across the central South China Sea and passing through Hainan Island. Simultaneously, a strong southwest monsoon affected central and southern regions, leading to widespread moderate to heavy rains and rising water levels in tributaries. From 23 to 31 July 2024, heavy rainfall driven by a low-pressure system and strong southwest winds caused floods and landslides across northern and central regions. The persistent heavy rainfall severely affected Luang Prabang Province, causing flash floods that damaged infrastructure and displaced residents in Viengkham, Pakxeng, and Phonthong districts. The National Disaster Management Committee (NDMC) under the Ministry of Labour and Social Welfare (MOLSW) reported that 19 villages across these districts were impacted, with approximately 4,441 individuals from 755 families suffering damages.

Further warnings were issued for 31 July and 1 August 2024 due to a persistent low-pressure system and strong southwest winds affecting northern and central Laos. Continuous heavy rainfall pushed water levels at key monitoring stations close to dangerous thresholds. According to the NDMC report covering the period from 22 July to 8 August 2024, the persistent heavy rainfall triggered widespread flooding and landslides across six provinces in Lao PDR: Luang Prabang, Huaphan, Xiengkhuang, Borlikhamxay, Khammuane, and Salavan. Luang Prabang, Huaphan, and Xiengkhuang provinces were the most severely impacted by floods and landslides.

The NDMC report indicated that the extreme weather affected approximately 3,920 families, impacting around 19,600 people, including nearly 10,000 females, across 261 villages in 32 districts of the six affected provinces. The floods and landslides caused extensive destruction, damaging 3,578 hectares of rice fields and 299 fishponds. Additionally, more than 4,202 livestock, including cows, buffaloes, goats, pigs, and poultry, were lost. Infrastructure was also severely impacted, with 70 roads and six bridges becoming impassable, 73 electricity poles destroyed, 30 irrigation canals failing, and two local hospitals inundated. Moreover, at least 27 water systems are now non-functional. The estimated cost of damage is about 50.2 billion Lao kip (LAK), equivalent to CHF 1,956,580. Given this preliminary data from the NDMC, it is necessary to assess the full extent of the damages and needs to provide emergency response efforts and essential assistance to affected communities.

According to the Lao Red Cross (LRC) Huaphan branch report on 21 August 2024, heavy rainfall continued from 13 to 17 August 2024, triggering further flooding and landslides in Huameung and Hiem districts, Huaphan province. The severe weather affected shelters,

livestock, fishponds, and agricultural areas. Although the damage was reportedly severe compared to previous incidents in the region, adverse weather and poor road conditions hindered the LRC branch's efforts to collect data and deliver initial relief assistance to the affected communities. However, an urgent response is still needed, particularly in the hardest-hit provinces of Huaphan and Xiengkhuang.

On 22 August 2024, LRC reported that another flooding incident struck Xayabouly province, affecting Ngern and Xienghorn districts. According to the Ngern district office, heavy rainfall on 21 August 2024 caused flooding in four villages within the district, impacting approximately 80 families, 90 hectares of rice fields, 500 livestock, and 30 fishponds. Meanwhile, the LRC Xayabouly branch reported that nine villages in Xienghorn district were also affected, with roughly 301 families, or approximately 1,319 individuals, impacted by the flooding event. Thus, a total of 381 families across 13 villages in the two districts have been severely impacted. District officials have highlighted the substantial damages, emphasizing the urgent need for accurate data collection and continued response efforts to assist these flood-affected communities.

The Swiss Red Cross (SRC) has provided significant support to the LRC for its flood response efforts in Luang Prabang Province, focusing on the hardest-hit districts of Viengkham and Pakxeng. This support enabled the LRC to assist the government in delivering basic assistance to affected communities. Key initiatives include supervising the ongoing needs assessment and distributing cash to affected families.

The LRC Huaphan Branch has also been actively involved, collaborating with district offices to assist flood-affected communities. Their initial response efforts included rapid data collection, construction of water barriers, relocation of assets and livestock, and distribution of relief kits to vulnerable families in accessible areas. The branch has also sought funding support from LRC headquarters to mobilize resources for a comprehensive needs assessment to further extend response efforts to those impacted by severe flooding.

Despite ongoing efforts, additional funding is urgently needed to support response operations, particularly in Huaphan, Xiengkhuang, and Xayabouly provinces, where the need for assistance remains critical.



Lao Red Cross Emergency WASH team deploys mobile water filtration units to provide clean water to flood-affected communities in Luang Prabang Province (Photo: LRC Luang Prabang)

Current National Society Actions

Start date of National Society actions

07-08-2024

| | |
|--------------------------------------|---|
| Multi Purpose Cash | <p>In Viengkham and Pakxeng districts of Luang Prabang province, direct cash distribution began on 20 August 2024. The launching ceremony was attended by the LRC President, the Provincial Governor, and local authorities. Within 13 days of receiving official information from the NDMC, LRC mobilized resources at NHQ and commenced direct cash distribution on 20 August 2024. The distribution covered 13 villages, reaching 511 households and benefiting a total of 2,582 individuals, including 1,304 males and 1,258 females. The cash assistance was divided into two tiers: 1) Households with one to four members received LAK 1,000,000 (equivalent to CHF 39), and 2) households with five or more members received LAK 1,500,000 (equivalent to CHF 58). This cash distribution was supported by SRC, amounting to a total of LAK 659,000,000 (equivalent to CHF 25,594). The assessment included a quick evaluation of market feasibility, noting that local markets were operational and that the supply chain could quickly recover once the floodwaters subsided, ensuring the viability of cash interventions in the affected areas.</p> |
| Water, Sanitation And Hygiene | <p>Between 7 to 13 August 2024, LRC Luang Prabang branch generated clean water using an AP 700 CL water treatment equipment. This effort benefited 605 families in six villages within Viengkham district, serving 3,451 individuals, including 1,910 males and 1,541 females. A total of 52,000 liters of clean water was produced with funding support from SRC.</p> |
| Coordination | <p>LRC headquarters collaborated with the National Disaster Departments under the National Disaster Management Committee (NDMC) and the Ministry of Labour and Social Welfare (MOLSW) to gather information about affected areas. They also coordinated with LRC branches at both the provincial and district levels to be ready to provide assistance as needed.</p> |
| Assessment | <p>With funding support from SRC, LRC started implementing needs assessment between 9 to 16 August 2024 in two districts of Luang Prabang province: Viengkham (seven villages) and Parkxeng (six villages) district, which covered a total of 13 villages, 511 households and 2,582 individuals (M: 1,304/F: 1,258)</p> |
| Resource Mobilization | <p>Since the beginning of August 2024, LRC headquarters and branches have raised funds from all sectors, including both private and public sectors, as well as domestic and international donors. Additionally, LRC headquarters submitted an official letter to the SRC Office in Lao PDR requesting funding to support the flood response and assist affected people. The SRC allocated a budget of LAK 852,440,000 (equivalent to CHF 32,623).</p> |
| National Society EOC | <p>While LRC lacks a formal Emergency Operations Center (EOC), they have made earnest efforts to establish a disaster committee at its headquarters. To facilitate effective coordination, LRC has leveraged the WhatsApp platform to establish and operate this committee, extending its reach to branch levels as well.</p> |

IFRC Network Actions Related To The Current Event

| | |
|--------------------|---|
| Secretariat | <p>IFRC Country Cluster Delegation (CCD) in Bangkok, Thailand, oversees four Mekong countries: Thailand, Lao People's Democratic Republic (Lao PDR), Cambodia, and Viet Nam. The IFRC CCD assists the National Societies in these countries by strengthening their institutional capacity, addressing humanitarian needs during disasters and crises, and supporting the implementation of development programs. IFRC is actively</p> |
|--------------------|---|



| | |
|---|--|
| | monitoring the situation and working closely with LRC to offer technical support during the development of the DREF application. |
| Participating National Societies | The Swiss Red Cross (SRC) allocated a budget of LAK 852,440,000 (equivalent to CHF 32,623) to support the flood response efforts in Luang Prabang province. This funding covered two districts, Viengkham and Parkxeng, reaching a total of 13 villages, 511 households, and 2,582 individuals. The activities supported by this budget included needs assessment, the production of clean water using an AP 700 CL water treatment equipment, and direct cash distribution. |

ICRC Actions Related To The Current Event

| |
|-----|
| N/A |
|-----|

Other Actors Actions Related To The Current Event

| | |
|--|--|
| Government has requested international assistance | No |
| National authorities | <p>At the national level, the Provincial Disaster Management Committee allocated LAK 120,000,000 (equivalent to CHF 4,461) in emergency relief for Viengkham district. The relief package includes three tons of rice (LAK 60,000,000/equivalent to CHF 2,328), household kits (LAK 40,000,000/equivalent to CHF 1,553), 240 sheets of corrugated galvanized iron roofing (LAK 10,800,000/equivalent to CHF 149), along with 50 mats, blankets, and 20 packs of bottled water. Cash assistance was also distributed to affected families, including LAK 25,000,000 (equivalent to CHF 971) to nine families who lost their homes, LAK 12,000,000 (equivalent to CHF 466) to 12 families with complete home damage, and LAK 35,500,000 (equivalent to CHF 1,379) to 71 families with flooded homes.</p> <p>At the provincial level, Huaphan province authorities provided LAK 50,000,000 (equivalent to CHF 1,942) in cash for basic relief and mobilized relevant sectors to repair damaged infrastructure, including telephone and electricity poles and roads.</p> |
| UN or other actors | N/A |

Are there major coordination mechanism in place?

At the national level, the Ministry of Labor and Social Welfare (MOLSW) is taking a lead role in coordination, working in close partnership with provincial authorities. LRC is actively coordinating with NDMC and providing data on flood affected areas.

Operational Strategy

Overall objective of the operation

The IFRC-DREF allocation aims to support LRC in conducting rapid needs assessments in the provinces of Huaphan, Xiengkhuang, and Xayabouly. Based on previous experiences where concrete information was lacking and hindering effective assistance provision, LRC is seeking to apply for a DREF assessment. Additionally, the existing information is insufficient for LRC to formulate a comprehensive plan of action and outline activities for each sector. The results of the assessments will provide crucial information for decision-making and the implementation of LRC's National Response Plan.

Operation strategy rationale

The currently available information provides only a general overview of the impacts and losses, making it difficult to identify the most affected populations, determine where actions should be reinforced, or prioritize aspects that would minimize the damage caused by the emergency and the anticipated increase in rainfall and flooding. Therefore, it is crucial for LRC to conduct damage assessments and needs



analyses using a multi-sectoral approach. This approach should include Community Engagement and Accountability (CEA) and Protection, Gender, and Inclusion (PGI) components to accurately identify the real needs of the affected population and develop an effective response strategy.

A total of 35 personnel from both the headquarters and branches will be deployed for the assessment. Additionally, an estimated 216 volunteers from 54 villages across six districts in Huaphan, Xiengkhuang, and Xayabouly provinces will join the LRC team to work at the village level. These individuals will be divided into four teams, each responsible for collecting data in different villages. Within each team, one person will coordinate with provincial and district authorities, while the remaining members will engage in data collection using the KOBO Toolbox. After the data collection phase, the teams will work together to consolidate and analyze the gathered information to produce a comprehensive report. The assessment will cover approximately 1,764 families, totaling around 8,712 individuals, as well as market actors and humanitarian organizations to minimize overlap.

The assessment phase will consist of two weeks of fieldwork, one week for consolidating and analyzing results, and one week for preparing the assessment report. In line with DREF procedures, the assessment is expected to be completed within one month from the start date of the operation, with the potential for an Operational Update during the assessment period to transition to a DREF for Response. Data will be gathered from family records using the KOBO tool or printed forms, considering security conditions and the distance between households. The maximum expected survey duration for each assessment is approximately 30 minutes.

The KOBO assessment will primarily focus on household evaluations, incorporating the following questionnaire components:

(i) Shelter Condition Assessment: This section aims to estimate potential losses and identify displaced populations that still require assistance from LRC. While the government will handle completely damaged houses, LRC can offer support for partially damaged houses through various cash assistance options.

(ii) Health Component: This section will gather data on historical disease outbreaks in the affected areas, including vaccination and nutritional status for children under five years of age. Access to healthcare services will also be assessed.

(iii) Protection, Gender, and Inclusion (PGI) Component: This part of the questionnaire will address the impact of the emergency on diverse and marginalized individuals, including various genders, age groups, individuals with disabilities, different health statuses, people from various ethnic backgrounds, and those with migrant status.

(iv) Community Engagement and Accountability (CEA) Component: This section ensures that individuals have access to timely and accurate information about the nature and extent of assistance and services provided by LRC. It also emphasizes making people aware of the expected behaviors of both staff and volunteers. Throughout the operational cycle, LRC's local volunteers and community members will be mobilized to support these assessments and remain involved.

To maintain the integrity of these operations, LRC staff and volunteers will adhere to LRC regulations and receive appropriate safeguarding measures. Additionally, all volunteers will be provided with insurance coverage to protect their well-being while engaged in assessment activities. To ensure comprehensive coverage of potential information, LRC will conduct refresher training on data collection using the KOBO Toolbox. This training will include sessions on PGI and CEA components, specifically tailored to LRC personnel and volunteers, focusing on managing these aspects during emergencies.

Targeting Strategy

Who will be targeted through this operation?

In the assessment, LRC is prioritizing rapid needs assessments in Huaphan, Xiengkhuang, and Xayabouly provinces, based on confirmation from LRC branches and reports from the NDMC. Drawing from past experiences where insufficient information hindered effective aid, LRC aims to apply for a DREF assessment to ensure swift and accurate identification of affected areas. The initiative also includes creating an action plan to support future DREF requests and enhancing assistance to the affected population.

The primary target population in the assessment are those severely impacted by the floods, including low-income individuals, those lacking support from other organizations, households with disabilities or serious illnesses, female-headed households, pregnant women, families with children under five, and elderly individuals over 60 years old.

The needs assessment will be implemented in three provinces: Huaphan, Xiengkhuang, and Xayabouly, covering six districts: Xorn and Hiem in Huaphan province, Kham and Mork in Xiengkhuang province, and Ngern and Xienghorn in Xayabouly province. This will include 54 villages, a total of 1,764 families, and approximately 8,712 individuals.



Explain the selection criteria for the targeted population

The primary target population for assessment encompass individuals significantly affected by the floods. This group includes those with limited income or inadequate support from other organizations, households with disabilities or serious illnesses, families headed by women, pregnant women, families with children under five, and elderly individuals over 60 years old.

Total Targeted Population

| | | | |
|--------------------------------------|-------|-------|---|
| Rural | - | Urban | - |
| People with disabilities (estimated) | - | | |
| Total targeted population | 8,712 | | |

Risk and Security Considerations

Please indicate about potential operation risk for this operations and mitigation actions

| Risk | Mitigation action |
|--|---|
| Injuries or loss of life of staff or volunteers due to road accidents during assessments. | Due to the road condition and difficulty of accessing villages there might be an unexpected accident for LRC staff and volunteers. LRC will ensure availability of first aid kit in vehicles, first aid-trained staff, keep distance from potential targets, real-time monitoring of the situation and advising staff and volunteers, communication of activities and movement with all stakeholders, use of the protective emblem, Critical Incident Management and Emergency plans in place, movement monitoring. |
| The flood situation could potentially worsen. | LRC is planning to expand its operations and is considering requesting additional funding support from IFRC and its partners. |
| Health-related risks: Water-borne diseases (Cholera, Malaria, and Dengue fever) and vector-borne diseases reflect increasingly inundated spots as potential mosquito breeding sites. | Given the context, there is a risk (in some area) of the spread of water-borne diseases consisting of fecal-oral diseases, water-related diseases, aquatic diseases and increasing inundated spots as potential mosquitos breeding sites. LRC together with volunteers at branches will provide health promotion sensitization to affected people in targeted communities, the topics will cover water-borne diseases and vector-born disease which are common in Laos. They will inform families about the risks of transmission and about cleaning their homes and surroundings, removing stagnant water and curbing pollution. In case of suspicion, they will inform the local health authorities to prevent the spread of a potential epidemic at an early stage. Volunteers will be given information on how to properly protect themselves against waterborne diseases and will be provided with protective equipment such as alcohol gel. |
| People have high expectations from this assessment and are already anticipating receiving assistance since they have been interviewed. | To manage expectations, it is important to communicate clearly with the community, emphasizing that while the assessment is a crucial step, receiving assistance will depend on the availability of resources and the prioritization of needs. Ensuring transparency throughout the process can help mitigate disappointment or frustration among those who have been interviewed |

Please indicate any security and safety concerns for this operation

Adequate measures will be taken to ensure the safety and security of all RCRC personnel involved in this operation. The National Society's security framework will be applicable throughout the duration of the operation to their staff and volunteers. The IFRC Stay Safe 2.0 e-learning courses is mandatory for IFRC staff. All Red Cross Red Crescent staff and volunteers were encouraged to complete the IFRC Stay Safe 2.0 e-learning courses.

For personnel under IFRC security's responsibility, including surge support and integrated Participating National Societies deployed to the area, the existing IFRC country security plan, including security regulations, contingency plans for medical emergencies, relocation and critical incident management will be applied. Field missions undertaken by IFRC personnel will be undertaken following the current IFRC travel approval process, current health advisories and business continuity planning (BCP) guidance regarding COVID-19.

Has the child safeguarding risk analysis assessment been completed?

No

Planned Intervention



Protection, Gender And Inclusion

Budget: CHF 0

Targeted Persons: 35

Indicators

| Title | Target |
|-----------------------------------|--------|
| # of LRC personnel trained on PGI | 35 |

Priority Actions

1. Integrate PGI during emergency training into the refresher KOBO data collection training. This activity will be carried out without requiring additional budget.



Community Engagement And Accountability

Budget: CHF 0

Targeted Persons: 35

Indicators

| Title | Target |
|-----------------------------------|--------|
| # of LRC personnel trained on CEA | 35 |

Priority Actions

1. Integrate CEA during emergency training into the refresher KOBO data collection training. This activity will be conducted without requiring additional budget."





Secretariat Services

Budget: CHF 4,260

Targeted Persons: 2

Indicators

| Title | Target |
|----------------------------------|--------|
| # of monitoring visits conducted | 2 |

Priority Actions

1. IFRC will participate in monitoring visits to assess progress and provide support to ensure the effective implementation of activities.



National Society Strengthening

Budget: CHF 22,395

Targeted Persons: -

Indicators

| Title | Target |
|---|--------|
| # of damage and needs assessment report developed | 1 |
| # of refresher Kobo data collection training conducted | 4 |
| # of workshops conducted to consolidate and finalize assessment data | 4 |
| # of lessons learned/reflection workshop conducted for the assessment | 1 |

Priority Actions

1. Form and deploy assessment teams: Organize four teams, comprising 35 LRC personnel from headquarters and branches, along with approximately 216 volunteers at the village level, to conduct assessments in six districts.
2. Develop assessment tools and plan: Conduct meetings to develop needs assessment forms and finalize the planning process.
3. Conduct Kobo training: Provide refresher training on Kobo data collection at the district level to ensure accurate data gathering.
4. Carry out assessments: Conduct the assessment in six districts, covering 54 villages and a total of 1,764 families across Huaphan, Xiengkhuang, and Xayabouly provinces.
5. Consolidate and finalize data, as well as reflect on assessment exercise: Conduct a meeting to consolidate and finalize the collected data, including a reflection session on the assessment process at both district and headquarters levels.
6. Prepare assessment report: Develop the assessment report and provide an operational update accordingly.



About Support Services

How many staff and volunteers will be involved in this operation. Briefly describe their role.

A total of 35 personnel from both the headquarters and branches will be deployed to assess this initiative. Additionally, approximately 216 volunteers from 54 villages across six districts in Huaphan, Xiengkhuang, and Xayabouly provinces will join the LRC team to work at the village level. These volunteers will be organized into three teams, each responsible for collecting data in different villages. Within each team, one member will coordinate with provincial and district authorities, while the others will focus on data collection using the Kobo Toolbox.

After completing the data collection, the teams will consolidate and analyze the information to produce a comprehensive report. Personnel from the IFRC-CCD Bangkok office will support LRC by monitoring field visits.



Budget Overview



DREF OPERATION

MDRLA010 - Lao Red Cross
Floods 2024

Operating Budget

| | |
|---|---------------|
| Planned Operations | 0 |
| Shelter and Basic Household Items | 0 |
| Livelihoods | 0 |
| Multi-purpose Cash | 0 |
| Health | 0 |
| Water, Sanitation & Hygiene | 0 |
| Protection, Gender and Inclusion | 0 |
| Education | 0 |
| Migration | 0 |
| Risk Reduction, Climate Adaptation and Recovery | 0 |
| Community Engagement and Accountability | 0 |
| Environmental Sustainability | 0 |
| Enabling Approaches | 26,655 |
| Coordination and Partnerships | 0 |
| Secretariat Services | 4,260 |
| National Society Strengthening | 22,395 |
| TOTAL BUDGET | 26,655 |

all amounts in Swiss Francs (CHF)



Contact Information

For further information, specifically related to this operation please contact:

National Society contact: Bounyong Phommachack, Head of Disaster Preparedness Division, yong_phom@yahoo.com

IFRC Appeal Manager: Kathryn Clarkson, Head of Country Cluster Delegation, kathryn.clarkson@ifrc.org, +66657195322

IFRC Project Manager: Pascal BOURCHER, Programme Coordinator, pascal.bourcher@ifrc.org

IFRC focal point for the emergency: Farah Nur Wahyuni Zainuddin, Operations Coordinator, opscoord.southeastas@ifrc.org

Media Contact: Kovit Pholsena, Officer, Communication and Reporting, kovit.pholsena@ifrc.org

[Click here for the reference](#)

