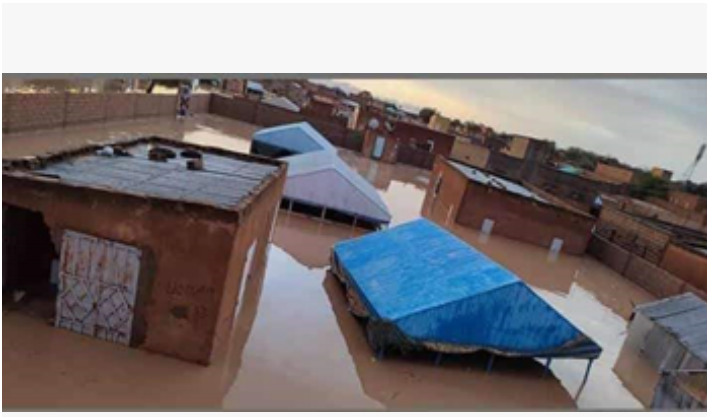




Houses floods up to the roof in Boghe

Appeal: MDRMR015	Total DREF Allocation: -	Crisis Category: Yellow	Hazard: Flood
Glide Number: FL-2023-000146-MRT	People Affected: 7,200 people	People Targeted: 4,800 people	
Event Onset: Sudden	Operation Start Date: 19-08-2023	New Operational End Date: 29-02-2024	Total Operating Timeframe: 6 months
Reporting Timeframe Start Date: 19-08-2023		Reporting Timeframe End Date: 28-12-2023	
Additional Allocation Requested: -		Targeted Areas: Brakna	



Affected houses completely flooded.

	Commune de Boghé						Commune de Dar El Avia/Ould Birem		Total
	Tedoubé	Teidouma	Amel	Central 1	Medina	Carafour paris	Commune Dar El Avia	Commune Ould Birem	
SAME									
ménages perdu leur stock alimentaires	120	130	135	123	200	92	165	235	1200
Superficies des parcelles submergées	10		1	1					12
déchet	32		0	62	1200				1294
ménages ayant besoin d'une assistance alimentaire	120		113	190	150				573
ménages ayant perdu leur matériel de travail	120		3	20	150	50			343

Données collectées lors de l'évaluation rapide dans les zones affectées @CRM

	Commune de Boghé						Commune de Dar El Avia/Ould Birem		Total
	Tedoubé	Teidouma	Amel	Central 1	Medina	Carafour paris	Commune Dar El Avia	Commune Ould Birem	
ABRIS									
ménages affectés	120	130	135	123	200	92	165	235	1200
maisons détruites	4	50	1	180	55	40			336
maisons partiellement endommagés	15	80	88	30	145	30			258
ménages sans abris	120	50	20	60	300	177			527
personnes déplacées	120	100		604	100	177			1101
ménages ayant perdu ustensile et les matériels de travail	120			20					140

Données collectées lors de l'évaluation rapide dans les zones affectées @CRM

	Commune de Boghé						Commune de Dar El Avia/Ould Birem		Total
	Tedoubé	Teidouma	Amel	Central 1	Medina	Carafour paris	Commune Dar El Avia	Commune Ould Birem	
EAU HYGIENE ET ASSAINISSEMENT / SANTE									
points d'eaux détruites	12			8			20		42
Familles ayant une difficulté à accéder en eau potable	120	30	40	160	40	177			567
personnes souffrantes	120		80	185	40	25			450
Cas des maladies liées à l'eau et manque d'hygiène	5		2	15		0			22

Données collectées lors de l'évaluation rapide dans les zones affectées @CRM

Summary table of needs.

Scope and Scale

The heavy rainfall that occurred on 31 July have affected many communities in Boghé, which is one of the most densely populated department in the region of Brakna, found in the South of Mauritania at 320 km away from the capital city Nouakchott. The department is constituted of 4 different communes: Boghé (the capital of the department), Dar El Avia, Ould Birem and Dar El Barka. The most affected commune out of all has been Boghé.

The city of Boghé has been the most affected one in the commune of Boghé. The flow of water has caused several damages, especially in different neighborhoods located in the area of "Moussafrine" and in one area found in Nioly. The area of Boghé Dow and its neighborhood, which has several electricity infrastructures and services, has been severely affected by the floods. Due to this, electricity has been purposefully cut off as measure of security. In Nioly and its surroundings (until Boghé Escale), the heavy rains have caused less damages.

The communes of Dar El Avia and Ould Birem have registered several levels of damage, including material damage, water pollution, agriculture and crop damage around main road of Axe Boghé-Rosso, the loss of livestock particularly ruminants, the loss of food stocks and household items. Telecommunication has also been temporarily affected.

WASH conditions were affected, with access to clean water and sanitation being difficult for most of the affected households. As needs assessment are being conducted, WASH assistance remains a priority to the affected populations.

Floods have affected the livelihood of several households in the area and has increased their vulnerability. The lack of adequate local capacity and response means that rapid and targeted assistance is needed to cover the basic needs of affected populations.

The National Meteorological office has informed that more heavy rains may be expected in the coming days in nine regions, including the Brakna region which includes Boghé department. It has been asked that the population remains alert to any upcoming rains.

Summary of Changes

Are you changing the timeframe of the operation	Yes
Are you changing the operational strategy	No
Are you changing the target population of the operation	No
Are you changing the geographical location	No
Are you making changes to the budget	No
Is this a request for a second allocation	No
Has the forecasted event materialize?	No
Please explain the summary of changes and justification:	



This update aim to inform stakeholders on the progress since 19.08.2023 when operation was launched and ensure the extension of 2 months is acknowledge by Mauritanian Red Crescent partners and IFRC DREF stakeholders. New end date will be 29.02.2024.

Since the launch, NS has ensure a detailed assessment could inform any decision making and confirm the planning and priorities defined in the initial plan. Following that assessment, NS has completed most of the activities in various sectors. Main achievements include:

- Completion of a well detailed multi-sectoral assessment (key findings being in the need section).
- Identification and list of beneficiaries for each assistance
- Cash distribution to 800HH- completed in October. Boghé 500 families; Ould Birem 200; and Dar El Avia 100.
- Awareness reached already 4800 people targeted and emphasis continue to ensure risk of diseases and good practices continue to be handle.
- Trainings to volunteers for capacity building on necessary topics part of this intervention _ 60 volunteers trained on shelter, CVA, community health, WASH, assessment and distribution techniques. 100 volunteers briefed on PGI and CEA briefings.

While conducting the above, the NS has faced few challenges which delayed the completion of the relief in-kind distributions (hygiene kits, mosquito nets, buckets 15L, shelter items distribution of 400 households). The main one being the delay of the procurement process which is not yet completed due to the lengthy process required for the tender and validation as part of procedures. NS also need to undergo a sample verification for the selected supplier which took more time that usual. This procurement process will be break-down and evaluate how it can be improved during the lesson learnt and in coordination with IFRC. Once procurement files are validated, the items should be received in a week and distribution completed. All efforts are put for a fast completion. Rendered few months since the population was displaced, despite the detailed assessment conducted weeks ago, NS will ensure relevance of shelter assistance will undergo to re-assess the priorities and needs in the communities. While the WASH needs and gaps in material have already been confirmed as needed, a re-evaluation for the shelter is to be done to confirm the same or inform any adjustments. This will guarantee that any distribution by this time is aligned with real-time information and address effective needs or gaps, it will also consider the consultation and coordination with local actors and Government.

Current National Society Actions

Start date of National Society actions

2023-08-02

Multi Purpose Cash	A one off Cash installment of was provided to 800 HH after selection of beneficiary in coordination with local authorities, village chief representative and branches team well aware on local specific context.
Coordination	<p>Since the start of the heavy rain falls, the MRC activated emergency cell to enable Red Cross / Red Crescent humanitarian response across the country.</p> <p>The coordination of these responses is supported via coordination meetings, discussion fora, information exchange via the GO platform and through situational updates regarding floods.</p>
Assessment	<p>With the support of the French Red Cross (CRF), the MRC has run an initial rapid assessment to help them define their plan of action. Information regarding floods have been published on GO platform.</p> <p>Results from the initial rapid assessment conducted by the MURC and the CRF are as follows:</p> <ul style="list-style-type: none"> - 1 death - 1200 affected households, corresponding to 7200 people - 330 houses completely damaged - 250 houses partially damaged - 527 households with no shelter - 1101 displaced people - 2 sites providing temporary shelter for 26 families - 1200 households lost capital, equipment and food stocks - 42 water points destroyed - 567 families have difficulty accessing clean water - 530 latrines destroyed



	<ul style="list-style-type: none"> - 22 cases of sick people reported due to lack of clean water and sanitation - 12 hectares of crops flooded - 1294 cattle taken away by water - 573 households in need of food assistance - 343 households lost their work equipment <p>Detailed assessment was later conducted in the 3 districts affected. This assessment informed the planning and oriented the targeting. Most of the collected information's just confirmed the priority needs already identified in the initial assessment.</p>
Other	<p>Capacity building of 100 volunteers which covers diverse skills in targeted sectors. Details in each sectors.</p> <p>NS also ensure awareness raising in the community on disease prevention, especially malaria and water-related disease.</p>

IFRC Network Actions Related To The Current Event

Secretariat	IFRC establishes the coordination, enables resource mobilization and implements the planned interventions with the help of technical assistance from deployed surge personnel.
Participating National Societies	The French Red Cross is actively present in Mauritania and has supported the MRC with the initial rapid assessment in the affected areas of Boghé. The assessment has been done by both the CRF and MRC.

ICRC Actions Related To The Current Event

ICRC has office in Mauritania based in the capital city, Nouakchott, and supports the MRC in preparedness for response. ICRC is regularly briefed on the plans and activities conducted by the MRC.

Other Actors Actions Related To The Current Event

Government has requested international assistance	No
National authorities	<p>Due to the level of damages caused by the floods, the President of Mauritania has instructed officials of affected states to take the required actions to mitigate impacts and consequences.</p> <p>The Minister of hydraulics and sanitation of Mauritania went to visit Boghé with response team from the National Office of Sanitation (ONAS) to open up flood areas in Moussafrine. The ONAS has mobilized 7 water pump stations along with 6 km of pipes and an important number of water cisterns and engine generator for electricity.</p>
UN or other actors	<p>The ONAS and other state entities such as the military, civil protection, and National Society for rural development (SONADER) have collaborated to put in place soil barriers that limit and slow down the flow of water in flooded areas.</p> <p>The ONAS has started to pump out water from flooded areas. Currently, 4 pumps are taking out 300 cubic meters of water per hour, and the remaining 3 pumps are taking out 150 cubic meters of water per hour.</p> <p>The administrative authorities, with the support of the municipal authorities, have registered the affected people and provided the MRC with an approved official list of beneficiaries.</p> <p>Pipe, with a diameter of 315mm, has already been installed. Unfortunately, Boghé city</p>



land surface forms a basin which makes the water evacuation more difficult. The ONAS has built an additional seawall to prevent water flow and accumulation toward the city.

Since the start of flooding in Boghé, administrative and communal authorities have been running rescue operations and evacuations of affected families in flooded areas transferring them into safe areas.

In addition, the food security authority (CSA) has provided food assistance for 234 affected families during the first rain falls 2 weeks before the flooding occurred. The food assistance included 1 bag of rice of 50kg, 10kg of sugar and 4 liters of oil for each family.

The CSA has also distributed 40 tent kits to support 40 families.

The MRC has a partnership agreement with a financial service provider (Djikée) as a partner in the implementation of cash operations. Within this framework, Djikée has ensured the distribution of cash to 800 disaster-stricken families in Boghé at a rate of 3,000 MRU per family.

Are there major coordination mechanism in place?

The humanitarian response and coordination in Boghé is led by the local authorities in collaboration with local humanitarian partners such as the MRC.

Needs (Gaps) Identified



Shelter Housing And Settlements

The initial assessment reports around 1,200 households with damaged houses due to floods. These houses, which are mostly made of mud, have been fragilized and destroyed by high volume water. Overall, 330 have been completely destroyed/damaged while 250 have been partially damaged, leaving more 527 households without shelter and 1,101 displaced people. Some of these households have found shelter in families or neighboring houses that were not affected by the heavy rain fall. 2 shelter sites have opened providing shelter to 26 families. The detailed assessment further confirmed the shelter needs with at least 45% of the evaluated houses which require rehabilitation or full reconstructions. The other 55% needed only minor repairs or have no impact following the floods. During meetings with stakeholders, it was noted that no accommodation sites had been set aside for disaster victims. Solidarity played its part to the full and enabled most of them to be accommodated.

A questionnaire has made possible to evaluate the preferable shelter assistance by that time which shown a preference for shelter material in majority. 30% of those surveyed said they would like assistance with building materials and tools, 25% for khayma tents, 11% for individual sheds and only 3% for repair materials and tools.

Other needs were for blankets (8%), fabrics (7%), mats (17%) and cooking utensils (19%).

Public facilities have been severely impacted. Houses which are still standing or have been little affected by the flood had limited access to electricity. The services were restored since.



Livelihoods And Basic Needs

The damaged roads and seawalls have caused and made access to resources and aid more difficult. This led to availability in markets but also access and logistic challenges for communities, suppliers and Red Cross. The access challenges have been expressed to become more difficult each rainy season which could also have an impact on the price of staple foods. Indeed, during the consultations, an increase in the price of foodstuffs on the markets was reported.

The above also has consequences on communities sources of income, both for the one linked to the market stability and the farming related activities which are also impacted by the floods. Indeed, the main source of income for communities living in Boghé is agriculture, farming and trade. The floods have caused the loss of food stocks, livestock and crop damages, with more than 1,200 households unable to meet their daily basic needs. 12 hectares of crops have been flooded, 1,294 cattle have been taken away by the water and 343 households have lost their work equipment. 537 households require immediate food assistance.





Health

With the evaluation report showing that 42 water points had been destroyed and 530 latrines had collapsed, the risk of spreading water borne diseases is high. During the assessment, 22 cases of water-related diseases had been reported and 567 families had difficulty accessing drinking water. This needs to be closely monitored to prevent the surge of cholera or other waterborne diseases.



Water, Sanitation And Hygiene

The detailed assessment revealed the communities have several water sources on which they rely on but only 21% had access to the National and 25% had access to public taps. For the others 54%, they rely on wells, lacs or rivers as their water sources.

The Water access and deterioration of leaving condition for these families has worsen the hygiene conditions and cleanings. In terms of hygiene, only 8% of respondents know the 5 key moments for washing hands. The most common was washing hands before eating (90%), followed by washing hands before making food (60%), after using the toilet (53%), after cleaning infants (14%) and before breastfeeding (9%).

The high number of destroyed water points and latrines (42 water points and 530 latrines) and the important level of stagnated water makes the access to clean water challenging for at least 567 households, which will increase risks of waterborne diseases, including malaria and diarrheal infection.

With the Public facilities damaged during the floods and the water access challenges (both in normal period and following the disaster) The communities remain exposed to significant risk linked to hygiene, water related conditions.

Any identified gaps/limitations in the assessment

The high level of water has made it difficult for the evaluation team to access the most affected areas during the initial days and the plan launched initially was based on available information from the initial rapid assessment and from local and communal authorities secondary data. NS later conducted a detailed assessment that provided an opportunity to evaluate the shelter, WASH and food security situation of the most vulnerable flood affected populations in the three communes (Boghé, Dar Elavia, and Ould Birem) targeted by this DREF operation.

That assessment by the time of this update remain relevant for the WASH, Health and protection elements and needs. The planned assistance through this extension will serve to complete covering those needs and gaps identified.

In terms of shelter, regular field visits have allowed to observed some copying mechanism on the shelter with some affected populations that have returned to their homes when this was possible, some others still accommodated with families. With the delay observed on the shelter intervention, there is a need to re-assess the current priorities and needs for shelter for these communities. As well as update the vulnerabilities and priorities target for the shelter intervention in coordination with local partners and authorities.

Operational Strategy

Overall objective of the operation

The goal of this operation is to provide assistance to 800 households affected by the floods in the Boghé department through a support to access housing solutions as per expressed preferences, WASH kits and services, health emergency services and prevention and ensure minimum protection and engagement standards.

Operation strategy rationale

The intervention strategy is detailed in the initial plan and the focus was to ensure assistance to 800 families most affected as per the initial assessment. The detailed assessment later planned confirmed the relevant of the planning and targeting priorities. Hence, NS intervention include:

- 1) A one-time cash assistance to help families cover basic needs for 800 families with various needs of material, access to minimum services and food but also support to the losses of livelihood or essential items.
- 2) The distribution of emergency shelters (tents and kits) to 400 HH part of the 45% of affected families which have seen their houses



destroyed or significantly impacted and needs housing solutions. The shelter intervention follows at that time the preferences expressed during the survey conducted in the affected populations of the three communes (Boghé, Dar Elavia, and Ould Birem).

3) Emergency health and WASH assistance to mitigate the risk of diseases, reduce the vulnerability to the leaving conditions and increase the hygiene and water access conditions, behaviors' and practices with messages and necessary basic kits.

The multi-sectorial assessment has been conducted by MRC, with the support of the IFRC and local authorities making sure that identified affected people will be covered. Summary of the multisectoral assessment report is included under the need section. This assessment provided an opportunity to evaluate the shelter, WASH and food security situation of the most vulnerable flood affected populations in the three communes targeted by this DREF operation. Data was collected through effective data collection in some localities and neighborhoods where affected populations live. 404 families affected were surveyed and 25 local representatives as well, mainly the village chief. Group consultations were also conducted with key representatives. The specific objectives met by that assessment include:

- Collect information from families (needs assessment)
- Assess the level of assistance provided by the Government and its partners and identify gaps in the response.
- Assess the socio-economic impact of the disaster and the potential impact on families and the needs of affected communities.
- Assess the situation of local markets and accessibility to basic food products and the livestock market (livestock and livestock feed) in the current situation.
- Make recommendations for the development of a support strategy as part of the DREF plan of action.

The shelter intervention is not yet conducted. Shelter was targeting 2,400 peoples or 400 households that was planned to received emergency shelter items and family items such as mattresses. The tents to be distributed follows strictly the traditional Mauritanian tents (Khaima) of 30m2 made of 100% unbleached cotton made of camel or sheep wool. The tent will have a triangular shape and will include: 1 mat of 3m, 4 pegs of 1.5m for each corner of the tent and a cord of 16m. Most Mauritanian households know how to install traditional tents. Volunteers will also know how to install them. These specific consideration is part of the criteria for the procurement process and quality requirement. The process has been delayed due to the verification of that quality which is a standard set-up in country for the shelter assistance.

The Cash assistance to support livelihood, food assistance and other necessities for 4,800 people or 800 households is completed as planned. The 800 households identified with the help of local and communal authorities received the planned 3,000 Mauritanian Ouguiya (MRO). In total, NS through this DREF distributed 2.4 million Ouguiya as part of the Mauritanian Red Crescent's efforts to provide support to families affected by the floods and help reduce their suffering. The families concerned by this cash distribution will benefit in the next phase from the distribution of shelter kits such as tents, and NFI kits consisting of mosquito nets, and hygiene equipment. The beneficiaries are scattered across the three communes as follows: Boghé 500 families; Ould Birem 200; and Dar El Avia 100. This activity was coordinated and well received by local and regional authorities but also communities and beneficiaries.

3) Health and WASH intervention is being completed through the provision of emergency preventive services, kit distribution and awareness to a target of 4,800 peoples or 800 households. The MRC focus being the prevention against against malaria and waterborne diseases by providing the necessary material and messages that will benefit to community practices' and behavioral changes. The eighteen promotion sessions planned are ongoing with messages and demonstrations on health and WASH practices, including hand washing practices for which lessons will be provided twice a month for 3 communes over 3 months. In total Eighteen to be run at least. Hygiene kits will be provided containing two 15L buckets with lid, bleach, and soap. Recipients of those hygiene kits will receive training on personal and family hygiene practices. The DAO has already been launched, the process will lead to the acquisition and distribution of items. The purchasing committee has delivered the results of the supplier selection process, and the minutes and other related documents yet to be validated to proceed with distribution. The needs remains there giving the leaving conditions have not completely improved and hygiene and water management is observed as a risk. Thus intervention remain relevant.

A survey will be conducted to evaluate the utilization level of hygiene kits and their impact on households following their distribution. All material purchases will be done in Mauritania. The handover process will be verified by the logistics team from the Dakar cluster.

Targeting Strategy

Who will be targeted through this operation?

Overall, 800 households are targeted based on the assessed needs, specifically the families that have damaged or destroyed houses, water points and food stocks because of the floods. The targeting will be done in collaboration with local authorities.

This DREF operation will target the affected population in 3 communes of Boghé region, namely Boghé, Dar El Avia and Ould Birom.

The following criteria have been identified as the required conditions to have in order to receive support from DREF:

- 400 households that had their houses completely destroyed will have priority on the access to shelter assistance (tents, kits, mats, etc...);
- 800 households that had their water points affected/contaminated will have priority on access to WASH activities;



- 800 households that lost fully or partially their food stocks required to sustain basic needs will have priority on access to unconditional cash, in line with the cash distribution strategy setup in Mauritania.

The average household size in Mauritania is of 6 peoples. In some cases, families may have up to 15 people. During the selection of beneficiaries for shelter, the size of households is taken into account.

Explain the selection criteria for the targeted population

The targeting takes into account the data obtained from the initial rapid assessment. Adjustments on targeted zones and population for assistance via DREF can be made once the multisectoral analysis has been completed.

The identification of targeted households will be done by local authorities and with the help of the multisectoral analysis. Priorities will be given to vulnerable groups of individuals, specifically children below the age of 5, elderly, disabled people, pregnant women and women heads of household.

Total Targeted Population

Women	1,900	Rural	80%
Girls (under 18)	550	Urban	20%
Men	1,800	People with disabilities (estimated)	-
Boys (under 18)	550		
Total targeted population	4,800		

Risk and Security Considerations

Please indicate about potential operation risk for this operations and mitigation actions

Risk	Mitigation action
Exposure to dangerous products, including bleach, have been reported in previous operations. During emergency response, the people of Mauritania are use to utilizing sanitizers and other cleaning materials, since many awareness campaigns were provided by MURC and partners. Bleach is often requested by communities. However, it is a corrosive product that potential hazards on humans and the environment if not used cautiously. Better handling comes with better understanding of it.	Awareness campaigns will help share key messages around the use soaps and bleach. The NS will conduct several door-to-door visits and use megaphones to conduct trainings of population on how to use bleach for domestic use, as it is quite accessible in markets. The MURC will monitor and revise their plan accordingly, taking into account the flood status and operational risks, including access constraints to affected populations, availability of first aid products, stocks and response movement from local and international actors in putting in place the DREF operation.
Restricted road access: access to affected areas is constrained by unpredictable road conditions affected by the rainy season, lack of asphalt in secondary roads and some infrastructures that have been damaged by the rain (e.g. bridges). These factors can temporarily slow down the setup of activities in those different affected areas.	Continous communication with local authorities regarding the road conditions and possible alternative and safe routes that can be used to access affected areas will be identified through time.

Please indicate any security and safety concerns for this operation

The security status in Mauritania remains quite stable. The affected communes are located in the department of Boghé, south of Mauritania. The MURC has a local committee within the department which has trained staff that are ready to act.

In general, the security of the country is quite influenced by the neighboring countries of the sahel region, particularly the border with



Mali, which is far from where operations will take place. No threat has been registered in the last few years regarding where DREF operations took place, despite the multiple protests that took place during the municipal, legislative and regional elections in May 2023. To note that the areas that are focused by the DREF are those found on the right side of Senegal river.

Within the scope of the DREF operation, the MURC will strengthen the security system following the rules and protection measures used by their team and partners to conduct the different activities safely.

In line with security measures, risk mitigation measures need to be adopted to reduce risk of MURC personnel of being involved in criminal or acts of violence and danger on the road. An orientation and a security briefing must be provided to all teams in order to make sure they are safe. Standard security protocols with regards to general norms, cultural norms and code of conducts will have to be put in place. The minimum-security requirements will have to be applied. All members from RCRC movement (NS, IFRC) involved in the operation must have followed prior to their deployment the online stay safe courses (level 1 and 2, level 3 for managers). The IFRC security plan will apply to all IFRC staff during their operation. An evaluation of the security risk in given area will be performed for all areas covered by the operation if IFRC staff will be deployed. Risk mitigation measures will be identified and deployed as well.

Planned Intervention



Shelter Housing And Settlements

Budget: CHF 78,929

Targeted Persons: 2,400

Indicators

Title	Target	Actual
#HHs assisted with shelter items	400	-

Progress Towards Outcome

- 03 shelter/distribution training sessions were carried out for 60 volunteers in the 03 communes.



Multi Purpose Cash

Budget: CHF 70,768

Targeted Persons: 4,800

Indicators

Title	Target	Actual
#HHs supported with cash	800	800
%HHs declaring their conditions of living were improved with the cash distribution	95	-

Progress Towards Outcome

- Detailed evaluation conducted and consultation on shelter preference was also made by that time. This will be updated through a rapid assessment early January that will update on the current vulnerabilities and needs for shelter. It will also help inform on beneficiaries and partners for an agreed possible revision.
- Rapid market assessment completed to evaluate the price and cash risk. This also helped confirmed the available cash installment



could support and is still aligned with effective prices for a minimum expenditure basket (MEB) per family, based on number of people and needs.

- Deployment of 15 volunteers for 5 days to assist targeted households and identify feasibility of cash transfer (in all 3 communes) and 5 days to support distribution of cash.
- Distribution of unconditional cash to 800HH
- A post distribution monitoring (PDM) of the cash distribution survey has been carried out in the 3 communes by volunteers using the Kobo collect tool. Results being analyzed and will be populated in the final report.



Health

Budget: CHF 9,952

Targeted Persons: 4,800

Indicators

Title	Target	Actual
#of people reached with awareness-raising messages	4,800	4,800
#of families that confirmed the mosquito nets received were benefiting their health priorities	800	0

Progress Towards Outcome

- The tender process has already been launched and under finalization. Distribution of the items to follow by early January.
- Capacity-building training for community health and wash volunteers is planned, as is the deployment of the same volunteers for door-to-door awareness campaigns in November.
- Three training sessions were held in the 03 communes, and 60 volunteers were deployed for door-to-door awareness campaigns. This activity is currently underway in all three communes.



Water, Sanitation And Hygiene

Budget: CHF 40,908

Targeted Persons: 4,800

Indicators

Title	Target	Actual
#of people reached with Hygiene and WASH related messages	4,800	4,800
#HHs supported with WASH items	800	0
%people reported to have increase their WASH practices through the service provided by MRC	70	0

Progress Towards Outcome

- The tender process has already been launched, and the process is underway, leading to the acquisition and distribution of items.
- Capacity-building training for wash volunteers is planned.
- A door-to-door awareness campaign is in the pipeline.
- Awareness-raising activities on water, hygiene and sanitation have started and are ongoing in the 03 communes.





Protection, Gender And Inclusion

Budget: CHF 0

Targeted Persons: 4,800

Indicators

Title	Target	Actual
%of volunteers and personnel briefed on Minimum PGI standards and messages	100	100

Progress Towards Outcome

- PGI briefing for volunteers 100 volunteers active in the intervention.



Community Engagement And Accountability

Budget: CHF 1,742

Targeted Persons: 4,800

Indicators

Title	Target	Actual
% of feedback treated	100	100
#OF Volunteers and staffed briefed on minimum CEA standards and feedback system	100	-

Progress Towards Outcome

- CEA briefing for 100 volunteers involve in the intervention
- Engagement and inclusion of the communities to the assessment through an inclusive selection of the surveyed families and the set-up of consultative group to gather and confirm preferences.
- Inclusion of communities in decision making process, with main representatives and leaders of each community. This mainly pass through the village chiefs and religious leaders, designated as the main community authorities. 25 village chief/local authorities were conveyed to the assessment and consultations during the intervention.

The feedback system and management will be updated in final report.



Secretariat Services

Budget: CHF 38,660

Targeted Persons: 60

Indicators

Title	Target	Actual
-------	--------	--------



#of monitoring missions	2	2
% of volunteers insured	100	100

Progress Towards Outcome

An IFRC mission to monitor field activities took place in Boghé from 22 to 24 October 2023, the DREF intervention zone.

A mission to monitor and officially launch the DREF took place 12 Oct 2023. The mission consisted of the President and Secretary General of the MRC.



National Society Strengthening

Budget: CHF 61,997

Targeted Persons: 60

Indicators

Title	Target	Actual
#Of volunteers trained and mobilised.	60	60

Progress Towards Outcome

- Cash, CEA/PGI training was given to volunteers in the Boghé department, and the trained volunteers helped to distribute the cash during October.
- Another series of training sessions in community health and washing and in NFI distribution techniques is planned for mid-November.
- During the various training sessions, a reminder was given about the safety of volunteers and the RC Movement's Code of Conduct.
- All capacity-building training activities for volunteers and staff have been completed.

About Support Services

How many staff and volunteers will be involved in this operation. Briefly describe their role.

To make the DREF operation successful, the MURC will engage 60 volunteers who will be trained on the setup of the activities described above.

MURC staff and members present in field include:

- 1 manager for disaster management of MURC.
- 1 national manager for volunteers and 3 supervisors for targeted communes.
- 1 driver.
- 3 stock keepers.

The IFRC operations coordinator and Dakar cluster staff will provide technical support to the MURC during the duration of the operation.

Will surge personnel be deployed? Please provide the role profile needed.

An operations coordinator (surge) with skills in WASH and Cash will be deployed for a period of two months.

If there is procurement, will it be done by National Society or IFRC?

Logistics and purchase: the MURC has provided budget for the rental and use of a car. The operation takes into consideration the cost of fuel. The procurement process will be based on the administrative and financial procedures of the MURC, which should be in line with the



rules and regulations of IFRC.

How will this operation be monitored?

PMER: the NS will ensure the monitoring and reporting during the different activities involved in the DREF operation. To make sure activities take place smoothly, the MRC will mobilize the following lines of technical staff: PMER, communication, logistics, finance, food security and CEA. Field visits for these staff are included in the budget.

The IFRC will perform visits in the field in order to support the kickoff of the response operation, evaluation and reporting of the situation.

At the end of the operation, a workshop on the lessons learned will be organized by the MRC with the support of the IFRC. This workshop will enable better planning of future operations and will enable the MRC to present their readiness for response. Beneficiaries, partners, local and governmental authorities will participate in this workshop. This activity will be covered by the allocated budget for this operation.

Please briefly explain the National Societies communication strategy for this operation

Communication support will be developed to keep track of MRC and partners actions at all stages (shirts, hats, vests, logos, pictures, videos, etc...). Social media will also be used to increase visibility of the operation to inform people other than those covered by traditional media.



Budget Overview



DREF OPERATION

MDRMR015 - Mauritanian Red Crescent Mauritania Floods

Operating Budget

Planned Operations	202 300
Shelter and Basic Household Items	78 929
Livelihoods	0
Multi-purpose Cash	70 768
Health	9 953
Water, Sanitation & Hygiene	40 908
Protection, Gender and Inclusion	0
Education	0
Migration	0
Risk Reduction, Climate Adaptation and Recovery	1 742
Community Engagement and Accountability	0
Environmental Sustainability	0
Enabling Approaches	100 657
Coordination and Partnerships	38 660
Secretariat Services	0
National Society Strengthening	61 997
TOTAL BUDGET	302 956

all amounts in Swiss Francs (CHF)



Contact Information

For further information, specifically related to this operation please contact:

National Society contact: Mohamedou Raby, Secetaire General, m.raby014@gmail.com, +229 96 42 48 58

IFRC Appeal Manager: Adrienne Mbarga, DREF Delegate, adrienne.mbarga@ifrc.org, +229 96 42 48 58

IFRC Project Manager: Hubert Ferdinand Rémy Dedegbe, Operations Manager, rropsmgr.mrt@ifrc.org, +254 780 77 11 59

IFRC focal point for the emergency: Hubert Ferdinand Rémy Dedegbe, Operations Manager, rropsmgr.mrt@ifrc.org, +221 77 276 15 52

Media Contact: Mohamedou Raby, Secetaire General, m.raby014@gmail.com

[Click here for the reference](#)

