

<b>Emergency appeal №: MDRNP016</b> <b>Emergency appeal launched: 07/11/2023</b> <b>Operational Strategy published: 28/11/2023</b>	<b>Glide №:</b> <a href="#">EQ-2023-000214-NPL</a>
<b>Operation update #3 (6-month)</b> <b>Date of issue: 11/07/2024</b>	<b>Timeframe covered by this update:</b> From 03/11/2023 to 31/05/2024
<b>Operation timeframe: 13 months</b> (04/11/2023 - 31/12/2024)	<b>Number of people being assisted: 50,000</b>
<b>Funding requirements (CHF):</b> CHF 5 million through the IFRC Emergency Appeal CHF 7 million Federation-wide	<b>DREF amount initially allocated:</b> CHF 794,627

To date, this Emergency Appeal, which seeks CHF 5,000,000, is 26 per cent funded (excluding DREF amount of CHF 794,627). Further funding contributions are needed to enable the NRCS with the support of the IFRC, to continue providing humanitarian assistance in the immediate response and provide an integrated recovery approach to the affected population.



Nepal Red Cross Society (NRCS) staff conducting a health and hygiene promotion session in one of the affected communities of Jajarkot district. Sessions like this will help communities to practice safe hygiene and health seeking behaviour in the time of disaster and beyond. (Photo: NRCS)

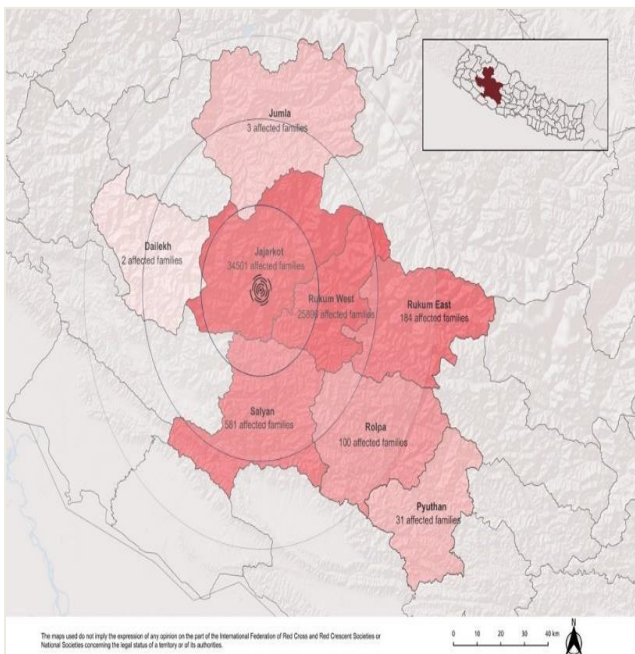
### Summary of changes made to the operation:

In addition to fulfilling the mandatory criteria of 6-month update, this Operation Update (OU) also provides key information on few changes in activities that will be implemented as part of recovery in affected areas:

- **School kits-** In April 2024, the IFRC signed a pledge with the Hong Kong Red Cross Branch of Red Cross Society of China to provide school kits to 4,948 school students affected by the earthquake in Jajarkot, Rukum West and Salyan Districts. Assessment reports revealed that students affected by the earthquake lost their education materials. This effort by NRCS aims to encourage school children to continue their education activities and improve their wellbeing, as planned under the Protection, Gender and Inclusion (PGI) sector.
- **Disaster Risk Reduction (DRR)-** Based on consultations conducted at different levels, from affected communities to the federal level, and considering the possible impact of the upcoming monsoon, DRR has been identified as one of the major areas that needs support from the Red Cross. This support is vital for community preparedness to keep community safe from future disasters of similar or greater intensity.

## A. SITUATION ANALYSIS

### Description of the crisis



A 6.4 magnitude earthquake struck Jajarkot District on 3 November 2023 at 11:47 local time. The epicentre was located in Ramidanda in Jajarkot district claiming the lives of 154 people of Jajarkot (101) and Rukum West (53) district and injuring 366 people. As of May 2024, no major aftershocks have been recorded however the impact remained quite challenging as more than 75,000 houses were affected by the earthquake in 10 districts out of which Jajarkot, Rukum West and Salyan districts were badly affected<sup>1</sup>. The Government of Nepal has announced an initial relief package of NPR. 200,000 (approximate CHF 1,430) for the families of the deceased along with providing free treatment to the injured.

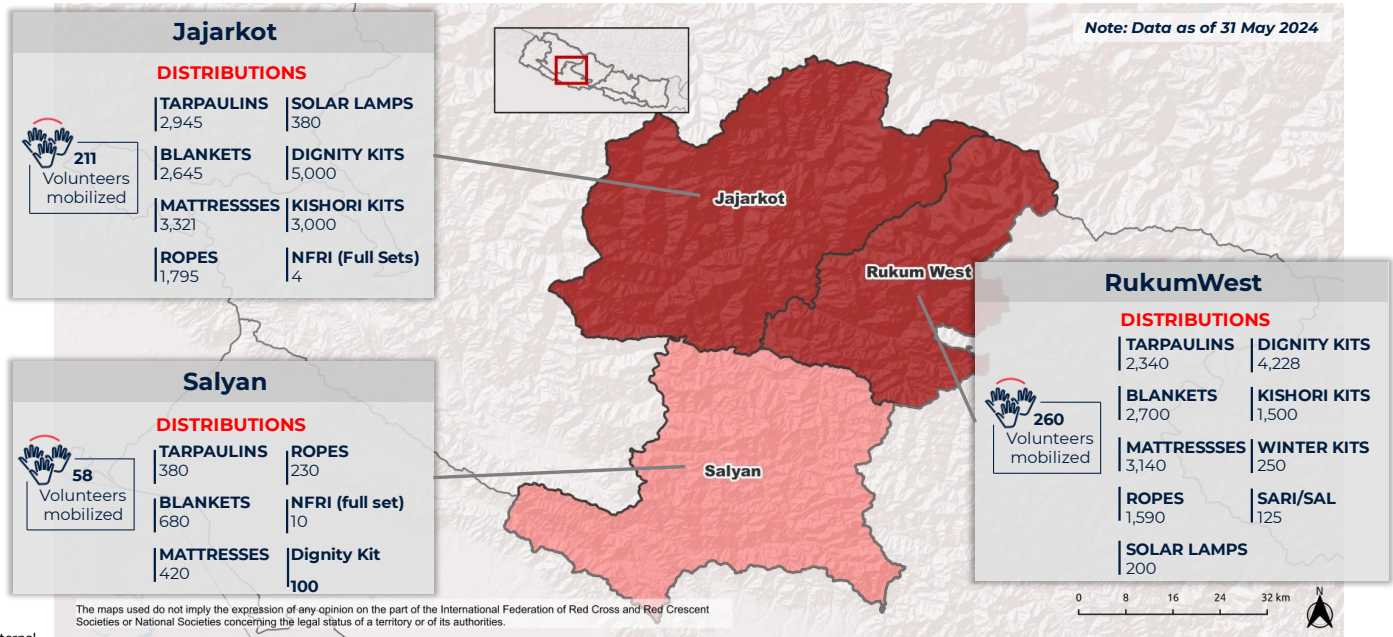
The impacted households are still residing in the temporary shelter with compromised sanitation facilities. Also, water points have been disrupted resulting in possible water scarcity in the affected districts. In addition to this, people who have lost their family members, and houses are living in fear of earthquakes and might still require psychosocial support especially children who have lost their family members, school material and their school itself have crumbled into rubble. Many of the earthquake-affected areas – including Jajarkot, Rukum, Dailekh, Salyan and Achham – experience significant seasonal labour migration of men, with mostly women and children remaining in local communities. In addition to this, the upcoming monsoon season which is expected to start from mid-June is posing greater risk of flood and landslide in the earthquake-affected areas. It is predicted that this year Nepal will likely experience above-normal monsoon which might result in the rise of humanitarian needs due to increased events of landslides and flooding ([Nepal braces for above-normal monsoon this year \(kathmandupost.com\)](https://www.kathmandupost.com)).

<sup>1</sup> According to Ministry of Home Affairs ([MOHA](https://www.moha.gov.np)) report.

# Summary of response

## Overview of the host National Society and ongoing response

### Distributions overview Nepal: Karnali Earthquake



Nepal Red Cross Society is implementing an IFRC-wide response based on the one plan approach in the affected communities with the support from the IFRC Network with presence in Nepal, including the IFRC Secretariat and five integrated members: American Red Cross, British Red Cross, Canadian Red Cross, Danish Red Cross and Swiss Red Cross. Another 11 IFRC members provide support through the IFRC appeal: American Red Cross, Austrian Red Cross, Finnish Red Cross, German Red Cross, Kong Kong Red Cross Branch of the Red Cross Society of China, Japanese Red Cross, Red Cross of Monaco, Saudi Red Crescent Authority, The Canadian Red Cross Society, The Netherlands Red Cross, Turkish Red Crescent Society, as well as European Commission-DG ECHO.

As of 31 May 2024, NRCS provided emergency assistance (at least one item) to **5,665 families** (29,905 people including 15,251 females) supported through the emergency appeal. During this period, 12,701 people (were provided with mental health and psychosocial support services (MHPSS) through community-based MHPSS interventions focused on household visits and orientation sessions. Similarly, NRCS has distributed 9,328 dignity kits to women of reproductive age, 4,500 kishori kits<sup>2</sup> distributed to adolescent girls, and 580 solar lamps distributed to the affected people with support from the IFRC appeal and UNFPA.

In addition, upon the request from the Government, technical volunteers of NRCS were mobilized to digitize shelter data on targeted households in [BIPAD Portal](#) of MoHA, in order to accelerate fund transfer (first and second instalments) for transitional shelter construction before starting the monsoon rains. A total of 32 technical volunteers (24 are from Jajarkot covering the whole district, six from Rukum West covering NRCS working areas and two in Salyan covering Darma Rural Municipality) have been mobilized. As of 31 May 2024, 32,719 household data (23,860 data of Jajarkot and 4,080 data of Rukum West and 4,779 data of Salyan) have been updated by volunteers in the Portal.

<sup>2</sup> Kishori kit contain items for female adolescent – sanitary items, women undergarment etc.

As of May 2024, 35,722 households from Jajarkot (15,820), Rukum West (19,831) and Salyan (71) have completed the construction of temporary shelters with cash support from the Government and other agencies including from NRCS. NRCS provided cash support in two instalments to targeted 600 families from Jajarkot (350) and Rukum West (250). Temporary shelter construction is guided by the [Temporary Housing Construction Grant Procedure for Earthquake Affected Household-2023](#) to expedite the temporary shelter construction process.

All 600 households, targeted in this operation, have received both the two instalments of conditional cash, completed their transitional shelter with toilet and water storage tank and shifted to the transitional shelter. In addition, the district team conducted joint monitoring of the constructed shelter and WASH facilities to ensure the quality and utilization of the constructed structure prior to the release of the second instalment. This has been one of the good efforts that bring the concerned stakeholders together for better service delivery to the community. For IFRC-wide data breakdown, kindly refer to the respective section in Section C.

NRCS conducted health and hygiene promotion activities in the communities reaching out to at least 3,000 people including 1,527 females. Along with this, NRCS distributed 782 hygiene kits to the people affected by the earthquake reaching out to 3,910 people including 1,994 females.

As of May 2024, NRCS distributed multi-purpose cash grants to 4,173 households out of which 600 households selected for transitional shelter cash grants integrated with WASH Support are also included. Out of these, 1,900 households are supported by IFRC multilateral support, and 2,200 households are supported by bilateral support from in-country members (American Red Cross, British Red Cross, Danish Red Cross, Swiss Red Cross). A sum of NPR. 15,000 (approximate CHF 107) was provided to the affected families in one instalment through the bank which they can use as per their need. For IFRC-wide data breakdown, kindly refer to the respective section in Section C.

The NRCS district chapters, with support from UNFPA, provided multipurpose cash support for NPR 8,000 (approximate CHF 57) to 214 pregnant women in Jajarkot and Rukum West in order to support transportation facilities to visit health service centres for regular health check-ups and even for delivery cases to reduce delays in care related to obstetric complications. The targeted pregnant women were identified based on certain selection criteria developed in coordination with the district health office and concerned local authorities.

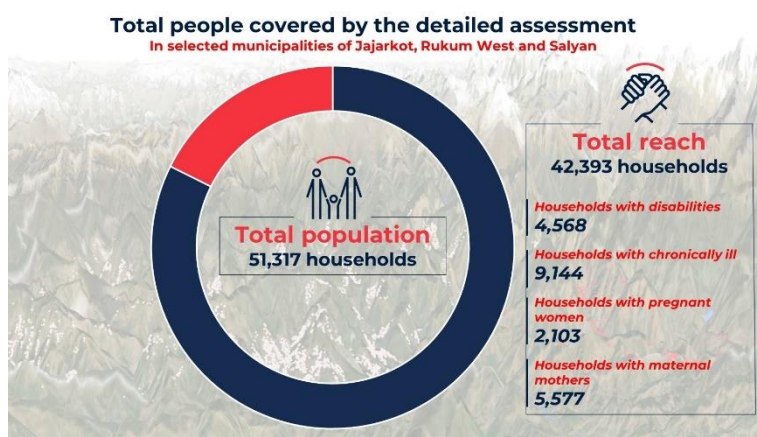
## Needs analysis

### Needs analysis

The NRCS conducted an Initial Rapid Assessment within 72 hours and detailed household assessment at the end of December 2023 in affected districts. At the end of the relief phase, the NRCS has conducted a series of community consultations in April-May to assess further needs and gaps for the recovery stage. These assessments and community consultations revealed the following needs for relief and recovery phases:

### Relief/Emergency phase:

Emergency phase needs remained the same. Following the earthquake, affected families urgently need shelter support. Many families remain in makeshift tents or outdoors, facing severe winter conditions in districts like Jajarkot and Rukum West. NRCS is working with local authorities to distribute emergency shelter items and build transitional shelters. Health impacts are widespread, with mental health issues also reported. Cold-related illnesses are prevalent, worsened by damage to health facilities, necessitating temporary community health services. Damage to WASH infrastructure, particularly in toilets and water sources, posing risks of waterborne diseases. Furthermore,



households residing in temporary shelters face risks of sexual and gender-based violence. Urgent action is needed to provide mental health support, prevent violence, and ensure care for vulnerable groups like children and pregnant women. More details on the relief phase needs can be accessed from the previous report [here](#).

### **Recovery Phase:**

**Shelter:** According to the detailed assessment and community consultations, permanent shelter support is the highest priority for households whose houses have been completely damaged by the earthquake. Additionally, households with partially damaged houses require support to renovate them. The Government of Nepal has been conducting damage and needs assessments, developing guidelines for house reconstruction, and intends to support these efforts from their side. Although 35,722 households have completed the construction of transitional shelters with conditional cash support from the Government and other agencies, including NRCS, there is a need for minor improvements to ensure safety and maintain temperatures inside the shelters. Permanent house reconstruction is also underway, but the availability of skilled masons in the communities is very low. Therefore, there is a need to conduct mason training in the community to ensure that newly constructed houses are safe. Additionally, raising awareness on safer construction practices and disseminating building by-laws are necessary for the affected communities.

**Health:** Health facilities have been damaged by the earthquake, and there is a need to reconstruct health service centers, including health service buildings, toilets, and water systems. Additionally, support is needed for equipment such as beds, cold chains for storing vaccines and medicines, reagents, testing kits, and delivery kits in the damaged health service centers. As the affected population has not fully recovered from the traumatic situation, mental health and psychosocial support (MHPSS) remains necessary at this stage. Furthermore, poor health and sanitation practices in the communities pose a risk of communicable disease outbreaks, so health awareness and promotion activities are needed. Given the limited availability of trained NRCS volunteers in the communities, there is also a need to conduct community-based health-related training for volunteers.

**Water, Sanitation and Hygiene (WASH):** The Earthquake on 3 November 2023 impacted water points in many areas, disrupting water supply in some areas. There is a need to maintain existing water sources, as well as establish new water points in communities to ensure regular water supply. WASH facilities (toilets, water points) have been damaged at the household level, as well as in schools and health centres, necessitating their renovation. Continuity of WASH promotional activities is equally important during the recovery phase to ensure that community members are protected from preventable diseases.

**Livelihood:** The detailed assessment and community consultations have shown that many households have lost their livelihood options due to the earthquake, including the loss of livestock and grain storage. The economic condition of affected households is very weak, as they depend on agriculture and livestock, which can barely sustain them for up to six months. Seasonal migration is common, with at least one family member going abroad, including to neighbouring countries like India, for work. Community consultations revealed that affected households are willing to restart their livelihood activities, such as crop farming, animal husbandry, beekeeping, and small enterprises. There is a need to provide skill-based training in these areas, provide cash grants to start businesses, promote insurance, and support households in linking their products to nearby markets.

**Disaster Risk Reduction:** Consultations carried out at the community level and with local authorities have indicated that the upcoming monsoon might have significant impacts due to potential floods and landslide. According to forecasts from the [Department of Hydrology and Meteorology](#), Nepal is expected to experience above-average rainfall. Therefore, community level preparedness and other risk reduction initiatives are needed in the targeted communities. Additionally, it is essential to address ongoing earthquake risks and other hazards using a multi-hazard approach.

### **Protection, Gender and Inclusion (PGI):**

The earthquake has damaged many school buildings and students were compelled to study on open spaces. This has caused traumatic situation among students and the re-recreational activities were rarely conducted in school/community areas. There is a need to establish child-friendly spaces by providing different materials such as sports, slides, swing, stationeries etc.) School/community activities are returning to normal condition however continuation of the activities planned for relief phase is equally important even in recovery phase.

According to the detailed assessment findings, 52 per cent of the total surveyed households reported that their houses were completely damaged by the earthquake, forcing them to reside in temporary shelters in close proximity. This situation might increase the risk of sexual and gender-based violence. Therefore, there is an urgent need to ensure DAPS are integrated throughout the operation, from planning to implementation.

The most vulnerable groups of people (children, senior citizens, pregnant and lactating women, etc.) are living under very stressful conditions due to the main shock followed by continued aftershocks and their current situation of living in emergency shelters in extremely cold environments. There is a need to provide mental health and psychosocial support (MHPSS) and raise awareness on violence prevention (including SGBV), while also promoting referral pathways among the affected population, especially for women and children.

Similarly, since a large number of households have been displaced and affected by human casualties, special care and attention will be required for children, pregnant and lactating mothers, people with disabilities, those with chronic illnesses, and the elderly. Many people living with disabilities have either lost their assistive devices or did not have proper devices before the earthquake, so there is a need to support them with assistive devices.

## **Operational risk assessment**

Risks identified in the reporting period are:

- **Upcoming Monsoon Rains:** The predicted above-normal monsoon rains in Nepal might affect the implementation of recovery activities. Increased floods and landslides, especially in the earthquake-affected districts, could disrupt transportation, communication, and access to districts, impacting the distribution of school kits. To mitigate this risk, IFRC is closely working with the NRCS EOC to finalize the transportation of items, store them safely, and distribute them before the monsoon starts.
- **Challenging Access to Targeted Areas:** Access to targeted areas remains difficult due to distance and poor road conditions. NRCS and IFRC have deployed operational vehicles to support early activities and a security team to assess local conditions. Additionally, the NRCS provincial office in Birendranagar is providing logistics support to the affected district chapters.
- **Damaged Office in Jajarkot District:** The earthquake destroyed the NRCS office in Jajarkot district. The team is currently working from a rented space lacking reliable internet access and power backup. IFRC is in discussions with NRCS to support establishing a functional workspace in Jajarkot district.
- **Recruitment Delays:** The finalized and agreed-upon IFRC-wide organizational structure poses a risk to the operation's timeliness, particularly concerning local-level positions, due to the limited capacity of district chapters to manage complex operations. To mitigate these risks, IFRC is collaborating closely with NRCS EOC, providing short-term surge support to local operational teams.

## B. OPERATIONAL STRATEGY

### Update on the strategy

The operation aims to address the immediate and longer-term needs of 10,000 families (50,000 people) affected by the earthquake, focusing on the hardest-hit districts of Rukum West, Salyan, and Jajarkot. This response is designed to remain adaptable, ready to extend assistance to neighboring districts if additional needs arise, with recent changes integrated into the operational plan.

In addition to reporting progress, this operational update highlights some changes in planned activities aimed at advancing recovery efforts in affected areas:

**School Kits Initiative:** IFRC has partnered with the Hong Kong Red Cross Branch of Red Cross Society of China to provide school kits to 4,948 students affected by the earthquake in Jajarkot, Rukum West, and Salyan Districts. This initiative, part of NRCS's effort under the PGI sector, supports students in continuing their education and improving their well-being.

Throughout the response, the operation will focus on the following key areas:

#### **Shelter and settlement:**

- Emergency phase- providing emergency shelter items to those whose homes have been damaged or destroyed, assisting in the provision of temporary housing solutions for those displaced or in need of shelter.
- Recovery phase- community capacity building and awareness building among community members for safer shelter construction.

#### **Multi-Purpose Cash Assistance:**

- Emergency phase - offering financial support to allow affected families to meet their diverse and immediate needs.

#### **Water Sanitation and Hygiene Promotion:**

- Emergency phase- Ensuring access to clean water, adequate sanitation facilities, and promoting hygiene practices.
- Recovery phase- Renovating damaged water points, sanitation facilities and promotion of hygiene practices

#### **Health Promotion:**


- Focusing on health awareness to prevent the spread of diseases and to promote overall well-being through MHPSS interventions.

**Risk Communication and Community Engagement:** Keeping communities informed about risks and involved in the decision-making process for their recovery.

**Protection Interventions:** Addressing the safety and rights of vulnerable populations, including women, children, the elderly, and those with disabilities.

## C. DETAILED OPERATIONAL REPORT

### STRATEGIC SECTORS OF INTERVENTION<sup>3</sup>

	<b>Shelter, Housing and Settlements</b>	<b>People Reached: 28,325 people</b>	
		Female > 18: <b>tbc</b>	Female < 18: <b>tbc</b>
		Male > 18: <b>tbc</b>	Male < 18: <b>tbc</b>

**Objective:** *Communities in disaster and crisis affected areas restore and strengthen their safety, wellbeing and longer-term recovery through shelter and settlement solutions*

Key indicators:	Indicator	Actual	Target
		<i># of people provided with basic and safe emergency shelter that adequately enables essential household and livelihood activities to be undertaken with dignity. (Relief and Recovery Phase)</i>	3,000 (600 families)
	<i># of people (and households) provided with household items that support the restoration and maintenance of health, dignity, and safety, and the undertaking of daily domestic activities in and around the home. (Relief Phase)</i>	28,325 (5,665 families)	40,000 (8,000 families)
	<i># of staff and volunteers who completed training in emergency shelter and emergency household items. (Relief Phase)</i>	-	849 staff and volunteers and other technical people
	<i># of people who attended training/awareness raising sessions on transitional safe shelter. (Relief Phase and Recovery phase)</i>	3,000	50,000

As of 31 May 2024, A total of **28,325** people **13,879 male and 14,446 female**) were reached with the emergency shelter items, as detailed in Table 1. NRCS NHQs and district chapters mobilized their stock of these items immediately after the onset of the earthquake and distributed them to the affected households.

**Table 1: District-wise details of emergency shelter items provided**

Items	Districts			Total
	Jajarkot	Rukum West	Salyan	
Tarpaulin	2,945	2,340	380	5,665
Blankets	2,645	2,700	680	6,025
Matresses	3,321	3,140	420	6,881
Ropes (in rolls)	538	1,700	230	2,468

<sup>3</sup> The provided figures for target and actual reach below are mostly IFRC-wide. Once targets and areas of intervention for IFRC and members are finalized, further breakdown (e.g., Secretariat and Fed-wide) will be possible.

Emergency shelter items were utilized to establish emergency shelters for individuals residing outdoors, whose houses were destroyed by the earthquake on 3 November 2023. Most households resided in these emergency shelters until they completed the construction of transitional shelters. As of May 2024, the distribution of emergency shelter items has been completed in all districts. Based on the distribution report, the IFRC has initiated the procurement process for 7,410 blankets through the IFRC Regional Office. Additionally, the IFRC has procured 4,000 tarpaulins and 2,000 mattresses to replenish the distributed items in early 2024.



*A technical staff of NRCS interacting with a person reached through shelter assistance in front of her newly constructed transitional shelter in Jajarkot districts. (Photo: IFRC)*

As of May 2024, NRCS has provided conditional cash grant for transitional shelter construction, integrated with sanitation facility and water storage tank for 600 households, reaching 3,000 people, including 1,530 females. IFRC-wide support breakdown of the target is provided in Table 2:

**Table 2: IFRC Wide support: Breakdown of Household Targeted for Shelter Construction**

IFRC Network	Target	People reached		
	Shelter	Male	Female	Total
IFRC Secretariat	270	661	689	1,350
American Red Cross	-	-	-	-
British Red Cross	140	343	357	700
Danish Red Cross	50	122	128	250
Swiss Red Cross	140	343	357	700
<b>Total</b>	<b>600</b>	<b>1,496</b>	<b>1,531</b>	<b>3,000</b>


The National Disaster Risk Reduction Management Authority ([NDRRMA](#)), acting as the central resource body for disaster risk reduction and management in the Nepal government, has developed guidelines for agencies, including

the Red Cross, providing transition shelter construction support. These guidelines, followed by NRCS with financial support from the IFRC Network, guide the design of the shelters, the targeting process, and the construction of the shelters.

The households were selected based on criteria developed in consultation with the local government and other key stakeholders in the affected communities. They received cash through bank transfer in two installments. The second installment was transferred once the targeted households completed the superstructure, which was verified by NRCS field-level technical volunteers. These technical volunteers, hired from provincial technical institutes for their internships (on-the-job training, or OJT), were fully engaged in communities from the beginning until the completion of the shelters. All assisted households began living in their transitional shelters by mid-May 2024.

The NDRRMA officially requested that NRCS and IFRC establish help desks and mobilize volunteers in each affected municipality of Jajarkot and Rukum West to collect and verify all necessary documents (registration forms, citizenship, applications, bank details, etc.) and support municipal authorities in record-keeping and the approval process. NRCS mobilized 60 volunteers for almost one month and supported the registration of 9,105 households for temporary shelters. The conditional cash grant was provided in two installments (NPR 25,000 per installment) after completing the registration process.

The NDRRMA has developed a system to update all information about targeted households (more than 62,000 households in 3 districts) who are to receive shelter support in its [BIPAD Portal](#). At the request of the NDRRMA, NRCS mobilized 32 volunteers: 24 in Jajarkot covering the entire district, six in Rukum West covering Triveni and Sani Bheri Municipalities, and two in Salyan covering Darma Rural Municipality to input data into the portal. The respective municipalities provided office space, laptops, printers, and necessary office equipment. The digitization process for 32,719 household data entries (23,860 in Jajarkot, 4,779 in Rukum West, and 4,080 in Salyan) into the [BIPAD Portal](#) of the Ministry of Home Affairs (MoHA) has been completed. As of May 2024, the achievement is low against the set targets due to the low funding coverage of the IFRC-wide appeal, which is only 43 per cent.

 <b>Livelihoods</b>		<b>People Reached: -</b>	
		Female > 18: -	Female < 18: -
		Male > 18: -	Male < 18: -
<b>Objective:</b>	<i>Communities, especially in disaster and crisis affected areas, restore and strengthen their livelihoods</i>		
<b>Key indicators:</b>	<b>Indicator</b>	<b>Actual</b>	<b>Target</b>
	<i># of people reached with livelihood assistance</i>	-	10,000 people (1,000 families)
	<i># of people provided with livelihood trainings</i>	-	150
<p>As of May 2024, community consultations were conducted in all three districts, identifying support to restore livelihoods as one of the major sectors to assist targeted people in the recovery phase. The community consultations highlighted the need for <b>skill-based training</b> in agriculture, masonry, and plumbing, as well as <b>sustaining livelihoods</b> through the provision of seeds, equipment and tools, mechanization, livestock support, and business startup grants. Livelihood activities are expected to start in July 2024.</p>			



## Multi-purpose Cash

**People Reached: 20,865**

Female > 18:  
**n/a**

Female < 18:  
**n/a**

Male > 18: **n/a**

Male < 18: **n/a**

### Objective:

*Households are provided with unconditional/multipurpose cash grants to address their basic needs*

### Key indicators:

#### Indicator

*# of people (and households) who successfully received cash for basic needs after being identified and processed for transfer*

#### Actual

4,173 HHs

#### Target

50,000 people  
(10,000 families)

As of May 2024, 20, 865 people including 10,224 females were reached with the multi-purpose cash support, details of the IFRC-wide target and people reached is provided in the table 3:

**Table 3: IFRC Wide support: target and people reached through multi-purpose cash grant**

MPC	Partner and district wise HHS				People reached		Total
	Jajarkot	Rukum	Salyan	Total	Male	Female	
IFRC Secretariat	701	641	558	1,900	4,655	4,845	9,500
American Red Cross	200	156		356	872	908	1,780
British Red Cross	627	626		1,253	3,070	3,195	6,265
Danish Red Cross	68	50		118	289	301	590
Swiss Red Cross	327	219		546	1,338	1,392	2,730
<b>Total</b>	<b>1,923</b>	<b>1,692</b>	<b>558</b>	<b>4,173</b>	<b>10,224</b>	<b>10,641</b>	<b>20,865</b>

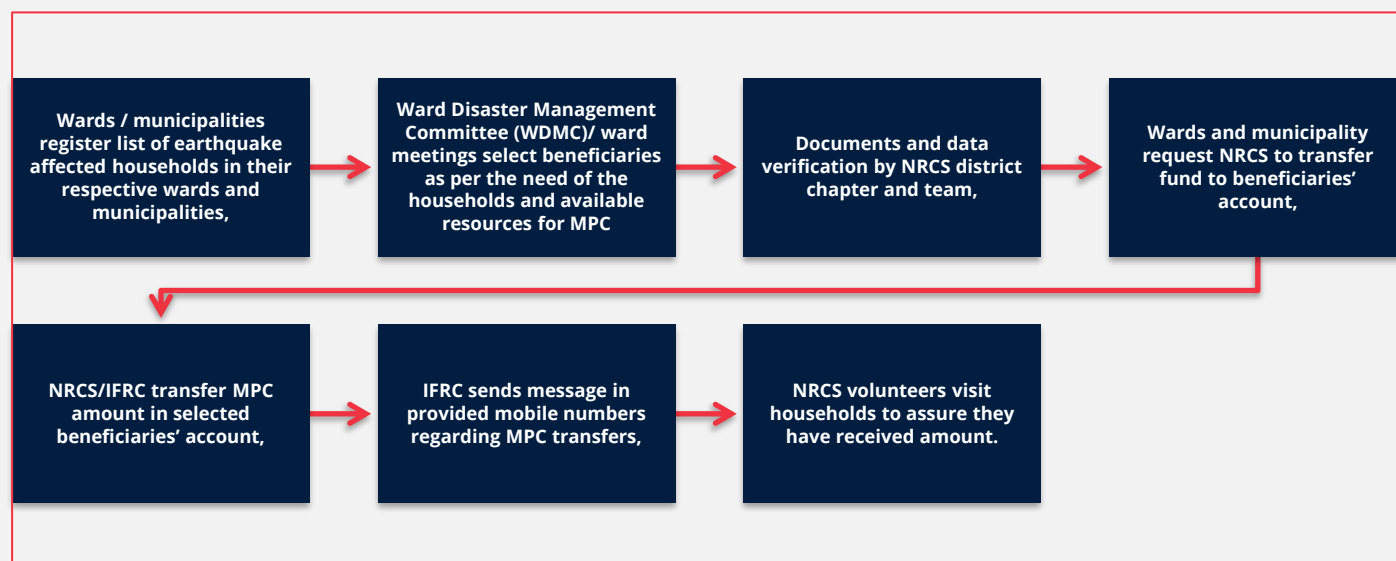
Each selected household received NPR 15,000 (approximately CHF 98) to address their basic needs. The amount was agreed upon by all Cash Working Group Members and revised MEB value annually as part of the HCT mechanism.

NRCS developed the following selection criteria, and in close coordination with respective municipalities, selected the eligible households for the multi-purpose cash (MPC). The selection criteria are:


- Households that are most affected by earthquake and with a very low income,
- Families that are in urgent need of multiple things (viz. food, medicine, pay debts, toilet, wash facility restoration, roofing, etc.) immediately after the earthquake,
- Families that have lost earning family member due to earthquake,
- Families who have lost their livelihoods and have a very low income,
- Female headed households, with low income and struggling to meet daily needs,
- Persons living with disability, elderly persons with chronic disease,
- Dalit families hard hit by earthquake and having minimum earning opportunities thereafter.

The process for cash grant is provided in the figure below.

**Figure 1: Cash grant disbursement process**



As of May 2024, the achievement is low against the set targets due to the low funding coverage of the appeal IFRC-wide is only 43 per cent.

	<b>Health &amp; Care</b> <i>(Mental Health and psychosocial support / Community Health / Medical Services)</i>	<b>People Reached: 23,726 people</b>	
		Female > 18: <b>tbc</b>	Female < 18: <b>tbc</b>
		Male > 18: <b>tbc</b>	Male < 18: <b>tbc</b>
<b>Objective:</b>	<i>Strengthening holistic individual and community health of the population impacted through community level interventions and health system strengthening</i>		
<b>Key indicators:</b>	<b>Indicator</b>	<b>Actual</b>	<b>Target</b>
	<i># of people reached through RCEC services (mobile clinic) (Relief phase)</i>	4,192	16,800
	<i># of people reached through MHPSS and PFA services (Relief and Recovery phase)</i>	23,726	43,622
	<i># of people reached by community health services</i>	22,253	50,000
	<i># of health facilities rehabilitated/reconstructed</i>	-	TBC

As of May 2024, NRCS conducted three events of Red Cross Emergency Clinic (RCEC) to provide health services to the people affected by the Earthquake Rukum West, Jajarkot in December 2023 and Salyan Districts in April 2024. A total of 4,192 people including 2,890 female, were reached with the RCEC services. Details of the services along with the number of people reached are provided in the table below:

**Table 4: District-wise details of RCEC services**

Districts	Date	RCEC Services			IFRC Network support
		People reached			
		Male	Female	Total	
Rukum West	Dec-23	1,040	2,155	3,195	Canadian Red Cross
Jajarkot	Dec-23				
Salyan	Apr-24	262	735	997	IFRC Secretariat
<b>Total</b>		<b>1,302</b>	<b>2,890</b>	<b>4,192</b>	

The RCEC services were organized in close coordination and collaboration with the Health Service Department of the Nepal Government, district hospitals and local authorities. After completing two events of RCEC services, an after-action review was conducted at NRCS NHQs, recommending increasing the scope of health services by including additional services for laboratory test and referral services.

Based on the suggestion, the third RCEC clinic event was organized in Salyan District in April 2024, providing services such as USG, lab test, PSS, physiotherapy etc. reaching 997 people, including 735 females. In addition, the team also disseminated preventive and public health messages along with hygiene and sanitation promotion messages. The helpdesk established to inform and received any feedback/suggestion from the community proved to be crucial. Notably, the health camp attracted community members, with individuals travelling long distances to access the different health facilities available.



*People receiving health services from RCEC established by NRCS in Salyan District. (Photo: IFRC)*

A total of 23,726 individuals, including 12,100 females were reached through MHPSS interventions from trained volunteers in Jajarkot, Rukum West and Salyan. IFRC/ Danish Red Cross mobilized MHPSS surge personnel, in four rotations, primarily engaged in field level operation. The surge personnel conducted training/orientation for NRCS community level volunteers and supported NRCS district chapters in providing Psychological First Aid (PFA) services in communities. NRCS district chapters mobilized 56 volunteers (28 volunteers in Rukum West including 17 female, 28 volunteers in Jajarkot including 13 female) who visited households daily to provide PFA services. In addition, 44 female community health volunteers (FCHVs) from Jajarkot and Rukum West were oriented/trained in Basic PFA.

As of 31 May 2024, a total of 22,253 people from the affected communities, including 11,708 females, were reached through more than 66 health awareness sessions with relevant health and hygiene awareness messages. NRCS volunteers conducted household visits and provided health awareness services in the affected areas, safeguarding people from preventable diseases while they lived under makeshift tents or transitional shelters.

To strengthen the existing capacity of volunteers and enhance their skill and capacities in Evidence focused community-based Health and first Aid (eCBHFA), a training session was conducted from 19-24 May 2024. The training included 20 participants, among them 3 FCHVs and 9 female staff and volunteers.



## Water, Sanitation and Hygiene

**People Reached: 21,105**

Female > 18: -

Female < 18: -

Male > 18: -

Male < 18: -

**Objective:** *Ensure safe drinking water, proper sanitation, and adequate hygiene awareness of the communities during relief and recovery phases of the Emergency Operation, through community and organizational interventions*

<b>Key indicators:</b>	<b>Indicator</b>	<b>Actual</b>	<b>Target</b>
	<i># of people reached by WASH assistance</i>	3,000 (600 families)	10,000 (2,000 families)
	<i># of emergency toilets constructed</i>	600	2,000
	<i># of sanitation facilities enhanced</i>	-	200
	<i># of people reached by hygiene promotion activities</i>	21,105	50,000
	<i># of handwashing stations constructed</i>	600	2,000

As of May 2024, 600 households received conditional cash support for toilet construction and water storage tank establishment, integrated with transitional shelter support. This support was provided to the same households who received shelter support. For the WASH support, targeted families provided NPR 22,500 (approximate. CHF 160) in two instalments, along with the shelter cash grant through bank transfer. Details of the WASH support are provided in the table below:

**Table 4: Details of IFRC-Wide WASH support in the affected districts**

<b>IFRC Network</b>	<b>WASH support</b>		<b>People reached</b>		
	<b>Toilet</b>	<b>Water Tank</b>	<b>Male</b>	<b>Female</b>	<b>Total</b>
IFRC	270	280	661	689	1,350
ARC	-	-	-	-	-
BRC	140	140	343	357	700
DRC	50	50	122	128	250
Swiss	140	130	343	357	700
<b>Total</b>	<b>600</b>	<b>600</b>	<b>1,469</b>	<b>1,531</b>	<b>3,000</b>


Similarly, 21,105 people including 10,764 females were reached with hygiene promotion activities, such as community sessions and household visits conducted by NRCS volunteers. Additionally, NRCS distributed 200 buckets and 702 hygiene kits in the affected areas. The IFRC completed local procurement of hygiene items and handed them over to NRCS.

For the hygiene kits, a full set was not procured as NRCS mobilized existing stock from previous years procured by IFRC. Only four items (bathing soap, washing soap, toothpaste and sanitary pad) of hygiene kit from NRCS existing stocks were nearing expiry. So far, IFRC has procured 3,299 sets of these items, of which 2,345 sets were charged for the British Red Cross, and 945 sets are charged to this appeal.

NRCS PFA-trained volunteers are delivering essential community health messages on hygiene and sanitation to the affected populations. These volunteers have disseminated messages on hand washing practices, including

demonstrations, the process for safe use of water (purification, boiling etc.) and measures to prevent various communicable diseases using the ECV (Epidemic Control for Volunteers) manual. The operation will scale up these activities in the coming weeks.

As of May 2024, the achievement is low against the set targets due to the low funding coverage of the appeal IFRC-wide is only 43 per cent.

	<b>Protection, Gender and Inclusion</b>	<b>People Reached: 12,000</b>	
		Female > 18: -	Female < 18: -
		Male > 18: -	Male < 18: -
<b>Objective:</b>	<i>Communities identify the needs of the most at risk and particularly disadvantaged and marginalized groups, due to inequality, discrimination and other non-respect of their human rights and address their distinct needs</i>		
<b>Key indicators:</b>	<b>Indicator</b>	<b>Actual</b>	<b>Target</b>
	<i># of RCRC staff and volunteers trained on PGI</i>	72	90
	<i># of people reached with referral services</i>	-	TBC
	<i># of people reached with orientation session on prevention of SGBV</i>	12,000	50,000
	<i># of child friendly spaces established</i>	13	16
	<i># of people received assistive devices following the screening camps</i>	23	600

A total of 72 staff and volunteers including 50 females participated in the PGI trainings. NRCS district chapters mobilized trained staff and volunteers in the community to conduct PGI related activities.

The NRCS district chapters have been closely monitoring the community situation to identify needs related to referral services for the most vulnerable groups (eg., elderly, pregnant and lactating mother, single women, and children) to support their access to health services and address gender-based violence cases if needed. NRCS volunteers are continuously mobilized at the households level to raise awareness among the affected population to ensure safety and security. However, no such cases were reported during the reporting period.

As of May 2024, NRCS distributed 9,328 dignity kits to women of reproductive age affected by the earthquake. In addition, 4,500 Kishori kits were distributed to adolescent girls. These kits were provided from NRCS existing prepositioned stocks as well as support from UNFPA. NRCS also distributed 12,000 IEC materials on SGBV and child protection, reaching the same number of people.

By the end of April 2024, 13 CFSs (7 in Jajarkot, 4 in Rukum West and 2 in Salyan) were established/supported with sports and education material to encourage student participation in these activities.

In addition, NRCS will distribute school kits to 4,949 pupils of 36 Schools (Jajarkot- 7, Rukum West- 25, Salyan- 4) with the support from the Hong Kong Branch of the Red Cross Society of China in July 2024. This is part of the PGI support to school children affected by the earthquake who lost their education materials and were reluctant to attend school. Details of this activity will be provided in the subsequent report.

The NRCS district chapters have identified people with disabilities in need of assistive devices. As of reporting period, the NRCS Rukum West district chapter has provided assistive devices such as crutches, wheelchairs, and commode chairs to 23 people. Similar support is ongoing in other related districts.



NRCS staff with school children in newly established child friendly spaces in Rukum West District. (Photo: IFRC)



## Community Engagement and Accountability

**People Reached: 27,540**

Female > 18: -	Female < 18: -
Male > 18: -	Male < 18: -

### Objective:

*o integrate CEA comprehensively into the response efforts, ensuring that the needs, priorities, and context of the affected communities are thoroughly understood and addressed in a collaborative and participatory manner*

### Key indicators:

#### Indicator

# of feedback mechanism established

#### Actual

4

#### Target

4

As of May 2024, more than 14,000 IEC materials related to SGBV, Child Protection, hygiene promotion, safe shelter construction, and NRCS hotline promotion were distributed in the community. These materials support sensitization efforts and enhance community knowledge and access to relevant services. Additionally, 16 hoarding boards (3 in Jajarkot, 6 in Rukum, and 7 in Salyan) were installed at various community centers. Simultaneously, NRCS volunteers have been mobilized to promote health and hygiene awareness, and to encourage use of the Hotline 1130 for collecting feedback for NRCS. To date, 790 feedback responses have been collected through various mechanisms, and 169 calls have been received and addressed via the NRCS hotline. Public service announcements (PSAs) and jingles on earthquake safety, fire safety, prevention of gender-based violence, cold wave preparedness, sanitation, and suicide prevention have been developed and shared with district teams for broadcasting on local radios.

More than 3,000 people were reached via SMS regarding MPC, shelter, and WASH grants transferred to their accounts. Earlier, NRCS supported authorities in scaling up the government-funded temporary shelter scheme by establishing help desks at various locations. This effort directly reached 9,105 individuals, who now have access to government funding for building their transitional shelters. Currently, data for 32,719 households (23,860 from

Jajarkot, 4,080 from Salyan, and 4,779 from Rukum West) have been updated in the BIPAD Portal with the help of 32 NRCS technical volunteers.



NRCS staff and volunteers engage with the community through various activities, fostering support and involvement in the recovery process. (Photo: NRCS)

## Enabling approaches



### National Society Strengthening

<b>Objective:</b>	<i>Contribute to strengthening NRCS at district local chapters and NHQ level while improving service delivery at community level</i>		
<b>Key indicators:</b>	<b>Indicator</b>	<b>Actual</b>	<b>Target</b>
	<i># of volunteers insured throughout the operation</i>	425	TBC
	<i># of NRCS chapter offices/warehouses rehabilitated/reconstructed (recovery phase)</i>	-	3

Currently, 425 NRCS volunteers are already insured through the IFRC global accident insurance in Geneva. This policy is being renewed for another term of one year in December 2023.

The EOC team is also considering various ways to leverage this operation as an opportunity for positioning NRCS vis-à-vis authorities at all levels, including in the support to the temporary shelter programme of the government, coordination on health related to RCEC deployment and community health issues (including vaccination campaigns, etc.).

NRCS has deployed two rounds of IFRC surges (operation manager and field coordinator) to the field with a focus on enhancing coordination with government authorities, INGOs, NGOs, and other stakeholders. This operation aims to identify opportunities to strengthen NS engagement at the provincial level, with a particular emphasis on developing and reinforcing the NRCS auxiliary role.

There is also an agreement among NRCS and IFRC members to use the Preparedness for Effective Response (PER) approach at a later stage of the operation, with initial discussions planned for the recovery phase. The Danish Red Cross conducted a logistics capacity assessment in January 2024, in coordination with the IFRC Asia Pacific Regional Office (APRO), as well as NRCS and IFRC Country Delegation. This assessment will inform further resource mobilization efforts.

Finally, the IFRC and its members are supporting NRCS in increasing the visibility of the operation through (1) joint field visits of communications colleagues, (2) daily support for social media engagement and (3) technical support to hold the joint press conference, which was held on 4 December 2023 in Kathmandu, one month after the earthquake.



## Coordination and Partnerships

<b>Objective:</b>	<i>Strengthening coordination within the IFRC membership and within the Movement to bring technical and operational complementarity and enhancing cooperation with external partners</i>		
<b>Key indicators:</b>	<b>Indicator</b>	<b>Actual</b>	<b>Target</b>
	<i>Strengthened coordination within the IFRC membership and within the Movement to bring technical and operational complementarity</i>	Yes	Yes
	<i>Enhanced cooperation with external partners</i>	Yes	Yes

NRCS is actively coordinating with the Ministry of Home Affairs, including its NDRRMA and the National Emergency Operating Centre (NEOC), as well as with the Karnali provincial government, District Disaster Management Committees (DDMCs), and the affected municipal and ward offices. NRCS is fully contributing to the disaster risk management (DRM) system of Nepal (as outlined in the 2017 Act), and supports the government's "one-door-policy" for disaster response. NRCS completed a detailed household assessment of the affected areas at the request of the Government. In the initial phase, NRCS conducted an Initial Rapid Assessment (IRA) in collaboration with the police and local authorities

Ongoing coordination with the Humanitarian Country Team (HCT), including shelter cluster coordination, is also ensured. IFRC/NRCS co-lead the shelter cluster and contribute to coordination meetings, situation reports, and other activities. NRCS and IFRC are also active members of other key clusters, such as the cash working group and the RCCE working group. Save the Children is very active in the province and co-leads the shelter cluster at the provincial level, fostering increased collaboration in the coming weeks. As co-lead of the shelter cluster, IFRC and NRCS have conducted four cluster meetings at the federal level, while Save the Children has conducted meetings at the provincial level. The transitional shelter design, developed by the shelter cluster during the earthquake response in 2022, has been customized and included in the guidelines endorsed by the NDRRMA.

In terms of membership coordination, the IFRC Country Delegation is ensuring IFRC-wide planning and implementation with NRCS EOC at the centre:

- The operational strategy of the appeal was designed after three intensive rounds of planning among NRCS sector leads, IFRC and all seven in-country members.
- Four surge personnel supported the operation. SIMS was activated mid-November 2023, and a coordinator was appointed (funded by the German Red Cross) who actively provided remote support to the operation in coordination with NRCS and Danish Red Cross. An operations Manager funded by the British Red Cross arrived in the country on 30 November 2023 to support the operation together with the CEA Officer. An MHPSS surge from the IFRC/Danish Red Cross arrived in Nepal on 21 November 2023 and supported the two earthquake operations (MDRNP015 and MDRNP016). In addition, IFRC deployed field coordinator early 2024 to support NRCS for effective implementation of activities at district level. The field coordinator was supported by the IFRC CEA Officer and Senior CVA officer.
- The implementation of this operation hinges on collaborative planning and budgeting, encompassing NRCS domestic fundraising, bilateral contributions to the appeal, and support through the IFRC Secretariat. Likewise, a joint timeline for the operation has been prepared and shared among all stakeholders.



## Secretariat Services

Objective:	<i>To provide comprehensive support to the NRCS in their relief operations, ensuring adherence to compliance standards, effective operational management, and enhanced visibility of their actions</i>		
	Indicator	Actual	Target
<b>Key indicators:</b>	<i># of IFRC monitoring and support missions</i>	6	TBC
	<i>% of financial reporting respecting IFRC procedures</i>	-	100%
	<i>Logistic department provides constant support to NRCS's logistic unit for replenishment and other procurements</i>	Yes	Yes
	<i># of evaluations conducted for this operation</i>	-	1
	<i># of surge personnel deployed</i>	8	3

The IFRC Country Delegation is providing strategic and operational advice to the NRCS leadership and the Emergency Operations Centre (EOC) on overall coordination, representation, planning, and compliance (as outlined in the NSD and coordination sections above).

Additionally, IFRC and its member societies are conducting joint monitoring visits to the affected areas. In February 2024, the Regional Director of the IFRC APRO visited Jajarkot District, accompanied by the NRCS Executive Director, Disaster Management Director, and the Programme Coordinator of the IFRC Nepal Country Delegation, to assess the situation on the ground. A high-level visit from ECHO was also conducted in February 2024, with the NRCS Response Coordinator.

Prior to these visits, the IFRC APRO organized a second partners' call to mark 100 days since the earthquake and to provide updates on the situation and the continuing needs of the affected population. At the country level, NRCS

held a press conference at its headquarters to commemorate the 100-day mark of the earthquake and to update the media on the support provided by NRCS, with technical and financial backing from the IFRC Network. Approximately 20 reporters from various print and online media outlets joined the event.

A Post Distribution Monitoring (PDM) survey was conducted with the support from external consultant hired by the IFRC Country Delegation. The consultant was in the field from late April to early May 2024 for data collection. As of May 2024, the consultant has submitted the first draft report, with the final report expected to be published on the IFRC website ([Evaluations and research](#)) in June 2024.

Furthermore, a vehicle was hired by the IFRC to provide fleet support for the teams including monitoring team, assessment and others as required. All the procurement that cannot be managed by the NRCS district chapters (as per NRCS policy) will be managed by the IFRC Country Delegation/APRO in close cooperation with NRCS HQ. The IFRC will use the existing framework agreements where relevant, in particular for medium thermal blankets and tarpaulins procurements.

## D. FUNDING

As of 31 May 2024, the general overview of IFRC Secretariat and Federation-wide coverage is as follows:

IFRC Secretariat Coverage	Amount Raised (CHF)	Funding Gap (CHF)	Coverage %
Hard Pledges + In kind + Soft Pledges	2,091,389 (includes DREF Amount of CHF 794,627)	2,908,611	42%
Federation-wide Coverage	Amount Raised (CHF)	Funding Gap (CHF)	Coverage %
NRCS domestic income + IFRC Secretariat + Bilateral support to NRCS	2,996,018	4,003,982	43%

Additionally, 26 per cent of the total funding requirement has been successfully pledged to the IFRC Secretariat Emergency Appeal. The donor response to date can be found [here](#).

Please refer to the financial report attached at the end of this report for more details.

## Contact information.

**For further information, specifically related to this operation please contact:**

### **At the Nepal Red Cross Society:**

- Umesh Dhakal, Executive Director; email: [umesh@nrccs.org](mailto:umesh@nrccs.org);
- Sagar Shrestha, Head of Disaster Management; email: [sagar.shrestha@nrccs.org](mailto:sagar.shrestha@nrccs.org)

### **At the IFRC Country Delegation in Nepal:**

- Azmat Ulla, Head of Delegation, Country Delegation Nepal; email: [azmat.ulla@ifrc.org](mailto:azmat.ulla@ifrc.org)
- Herve Gazeau, Programme Coordinator ; email: [herve.gazeau@ifrc.org](mailto:herve.gazeau@ifrc.org)
- Prajwal Acharya, DRM Manager; email: [Prajwal.acharya@ifrc.org](mailto:Prajwal.acharya@ifrc.org)
- Manorama Gautam, Sr. PMER and Comms Officer; email: [manorama.gautam@ifrc.org](mailto:manorama.gautam@ifrc.org)

### **At the IFRC Asia Pacific Regional Office in Kuala Lumpur:**

- Alexander Matheou, Regional Director; email: [alexander.matheou@ifrc.org](mailto:alexander.matheou@ifrc.org)
- Juja Kim, Deputy Regional Director; email: [juja.kim@ifrc.org](mailto:juja.kim@ifrc.org)
- Joy Singhal, Head of Health, Disaster, Climate and Crisis unit; email: [joy.singhal@ifrc.org](mailto:joy.singhal@ifrc.org)
- Olaf Collins; Operations Coordinator; email: [opscoord.southasia@ifrc.org](mailto:opscoord.southasia@ifrc.org)
- Afrhill Rances, Communications Manager; email: [afrhill.rances@ifrc.org](mailto:afrhill.rances@ifrc.org)

### **At the IFRC Geneva:**

- Christina Duschl, Senior Officer Operations Coordination; email: [christina.duschl@ifrc.org](mailto:christina.duschl@ifrc.org)

### **For IFRC Resource Mobilisation and Pledges support:**

- Maz Afiqah Mohammad Khairrul Azmi, Partnerships in Emergencies; email: [PartnershipsEA.AP@ifrc.org](mailto:PartnershipsEA.AP@ifrc.org)

### **For In-Kind Donations and Mobilisation table support:**

- Nuraiza Khairuddin, Regional Logistics Manager; email: [nuraiza.khairuddin@ifrc.org](mailto:nuraiza.khairuddin@ifrc.org)

### **For IFRC PMER and Quality Assurance and Performance and Accountability support:**

- Mursidi Unir, PMER in Emergencies Coordinator, email: [mursidi.unir@ifrc.org](mailto:mursidi.unir@ifrc.org)

### **Reference documents**



Click here for:

- [Previous Appeals and updates](#)
- [Emergency landing page](#)

## How we work

All IFRC assistance seeks to adhere the **Code of Conduct** for the International Red Cross and Red Crescent Movement and Non-Governmental Organizations (NGO's) in Disaster Relief, the **Humanitarian Charter and Minimum Standards in Humanitarian Response (Sphere)** in delivering assistance to the most vulnerable, to **Principles of Humanitarian Action** and **IFRC policies and procedures**. The IFRC's vision is to inspire, encourage, facilitate and promote at all times all forms of humanitarian activities by National Societies, with a view to preventing and alleviating human suffering, and thereby contributing to the maintenance and promotion of human dignity and peace in the world.

# Emergency Appeal

## INTERIM FINANCIAL REPORT

Selected Parameters			
Reporting Timeframe	2023/11-2024/5	Operation	MDRNP016
Budget Timeframe	2023/11-2024/12	Budget	APPROVED

Prepared on 02 Jul 2024

All figures are in Swiss Francs (CHF)

### MDRNP016 - Nepal - Earthquake

Operating Timeframe: 05 Nov 2023 to 31 Dec 2024; appeal launch date: 08 Nov 2023

## I. Emergency Appeal Funding Requirements

Thematic Area Code	Requirements CHF
AOF1 - Disaster risk reduction	0
AOF2 - Shelter	1,133,000
AOF3 - Livelihoods and basic needs	1,556,000
AOF4 - Health	745,000
AOF5 - Water, sanitation and hygiene	623,000
AOF6 - Protection, Gender & Inclusion	229,000
AOF7 - Migration	0
SFI1 - Strengthen National Societies	577,000
SFI2 - Effective international disaster management	0
SFI3 - Influence others as leading strategic partners	0
SFI4 - Ensure a strong IFRC	138,000
<b>Total Funding Requirements</b>	<b>5,001,000</b>
<b>Donor Response* as per 02 Jul 2024</b>	<b>1,296,762</b>
<b>Appeal Coverage</b>	<b>25.93%</b>

## II. IFRC Operating Budget Implementation

Thematic Area Code	Budget	Expenditure	Variance
AOF1 - Disaster risk reduction	0	0	0
AOF2 - Shelter	535,221	521,428	13,793
AOF3 - Livelihoods and basic needs	275,417	443	274,974
AOF4 - Health	78,795	148	78,647
AOF5 - Water, sanitation and hygiene	161,288	46,339	114,949
AOF6 - Protection, Gender & Inclusion	41,220	1,195	40,025
AOF7 - Migration	0	0	0
SFI1 - Strengthen National Societies	692,165	30,829	661,336
SFI2 - Effective international disaster management	0	0	0
SFI3 - Influence others as leading strategic partners	73,425	0	73,425
SFI4 - Ensure a strong IFRC	229,319	85,695	143,625
<b>Grand Total</b>	<b>2,086,850</b>	<b>686,077</b>	<b>1,400,773</b>

## III. Operating Movement & Closing Balance per 2024/05

Opening Balance	0
Income (includes outstanding DREF Loan per IV.)	2,091,389
Expenditure	-686,077
<b>Closing Balance</b>	<b>1,405,313</b>
Deferred Income	0
Funds Available	1,405,313

## IV. DREF Loan

* not included in Donor Response	Loan :	794,627	Reimbursed :	0	<b>Outstanding :</b>	794,627
----------------------------------	--------	---------	--------------	---	----------------------	---------

# Emergency Appeal

## INTERIM FINANCIAL REPORT

Selected Parameters			
Reporting Timeframe	2023/11-2024/5	Operation	MDRNP016
Budget Timeframe	2023/11-2024/12	Budget	APPROVED

Prepared on 02 Jul 2024

All figures are in Swiss Francs (CHF)

### MDRNP016 - Nepal - Earthquake

Operating Timeframe: 05 Nov 2023 to 31 Dec 2024; appeal launch date: 08 Nov 2023

## V. Contributions by Donor and Other Income

Opening Balance							0
Income Type	Cash	InKind Goods	InKind Personnel	Other Income	TOTAL	Deferred Income	
American Red Cross	263,267				263,267		
Austrian Red Cross	86,813				86,813		
DREF Response Pillar				794,627	794,627		
European Commission - DG ECHO	198,449				198,449		
Finnish Red Cross	139,344				139,344		
German Red Cross	20,501				20,501		
Hong Kong Red Cross	16,970				16,970		
Hong Kong Red Cross (from Government of Hong Kon	195,744				195,744		
Japanese Red Cross Society (from Red Crescent Soci	30,012				30,012		
Red Cross of Monaco	9,339				9,339		
The Canadian Red Cross Society (from Canadian Gov	137,371				137,371		
The Netherlands Red Cross (from Netherlands Govern	188,953				188,953		
Turkish Red Crescent Society	10,000				10,000		
<b>Total Contributions and Other Income</b>	<b>1,296,762</b>	<b>0</b>	<b>0</b>	<b>794,627</b>	<b>2,091,389</b>	<b>0</b>	
<b>Total Income and Deferred Income</b>					<b>2,091,389</b>	<b>0</b>	