

OPERATION UPDATE

Nepal | Karnali Earthquake

Emergency appeal №: MDRNP016 Emergency appeal launched: 07/11/2023 Operational Strategy published: 28/11/2023	Glide №: EQ-2023-000214-NPL
Operation update #2 Date of issue: 2/1/2024	Timeframe covered by this update: From 03/11/2023 to 08/12/2023
Operation timeframe: 13 months (04/11/2023 - 31/12/2024)	Number of people being assisted: 50,000
Funding requirements (CHF): CHF 5 million through the IFRC Emergency Appeal CHF 7 million Federation-wide	DREF amount initially allocated: CHF 794,627

To date, this Emergency Appeal, which seeks CHF 5,000,000, is 9 per cent funded. Further funding contributions are needed to enable the NRCS with the support of the IFRC, to continue providing humanitarian assistance in the immediate response and provide an integrated recovery approach to the affected population. Refer to section D for information.

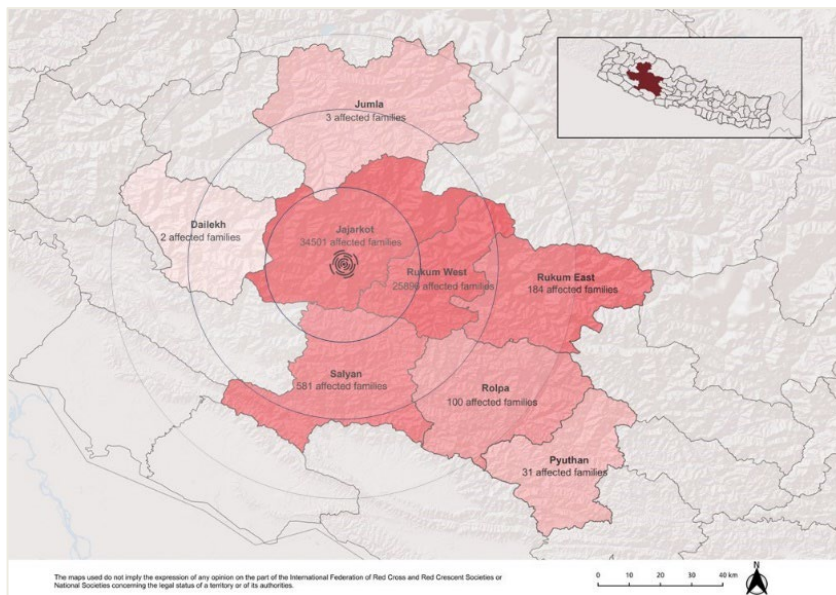


Red Cross People are constructing temporary shelter with the cash grant from the Government. Nepal Red Cross Society has established help desks in affected districts to facilitate the temporary shelter construction process through cash support by the Government. (Photo: NRCS)

A. SITUATION ANALYSIS

Description of the crisis

A 6.4 magnitude earthquake struck Jajarkot District on 3 November 2023 at 11:47 local time. The epicentre was located in Ramidanda in Jajarkot district claiming lives of 154 people of Jajarkot (101) and Rukum West (53) district and injuring 366 people. According to the [National Earthquake Monitoring and Research Centre](#) at least 483 aftershocks have been recorded since then with the most powerful one measuring 5.8 magnitude on 6 November 2023. According to the data of the [Ministry of Home Affairs](#) around 62,000 houses in 11 districts of three provinces namely Karnali, Sudur Paschim, and Lumbini. Out of which Jajarkot, Rukum West, and Salyan Districts were worst affected by the earthquake with reported death cases and loss of physical properties including private houses worth millions of Nepalese Rupees. Apart from this, the winter has aggravated the hardship for the affected people still living under the tarpaulin with their family members including elderly, children etc.



The Government of Nepal has announced an initial relief package of NPR. 200,000 (approximate CHF. 1,430) for the families of deceased along with providing free treatment to the injured. According to the [MoHA](#), more than 62,000 houses are affected impacted by the earthquake in the affected districts. Details are provided in the table below:

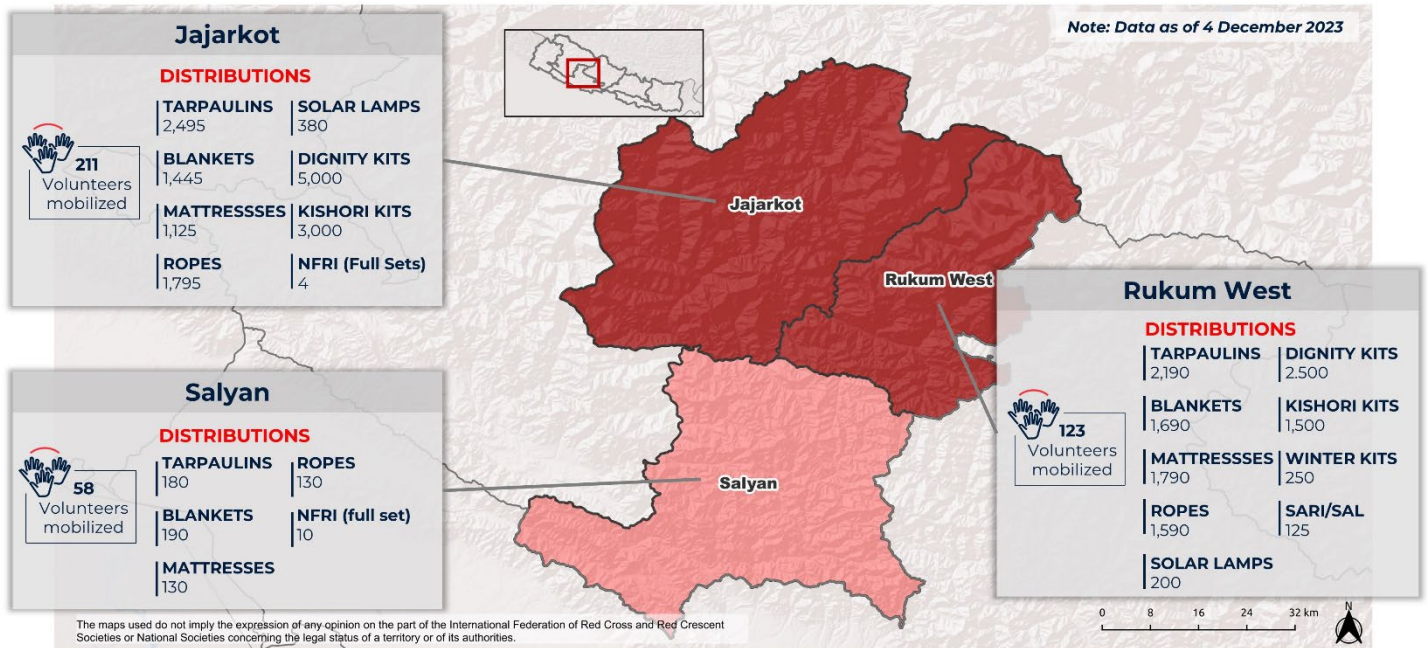
S.No.	Districts	Total household affected
1	Jajarkot	34,501
2	Rukum West	26,531
3	Rukum East	157
4	Salyan	663
5	Others*	160
	Total	62,012

*: Rolpa, Nawalparasi, Dailekh, Dang, Baitadi, Jumla, Kalikot, Pyuthan and Achham

As of 8 December 2023, the Government has started to provide cash support for the affected families to build temporary shelter where NRCS supporting this initiative by establishing help desk to facilitate the process. The temporary shelter construction is guided by the [Temporary Housing Construction Grant Procedure for Earthquake Affected Household-2023](#) to expedite the temporary shelter construction process. Similarly, Nepal Red Cross Society is also providing cash support to construction temporary shelter to 600 affected families following the government procedure in coordination with the Government at all levels. The cash disbursement is expected to start from mid-December 2023.

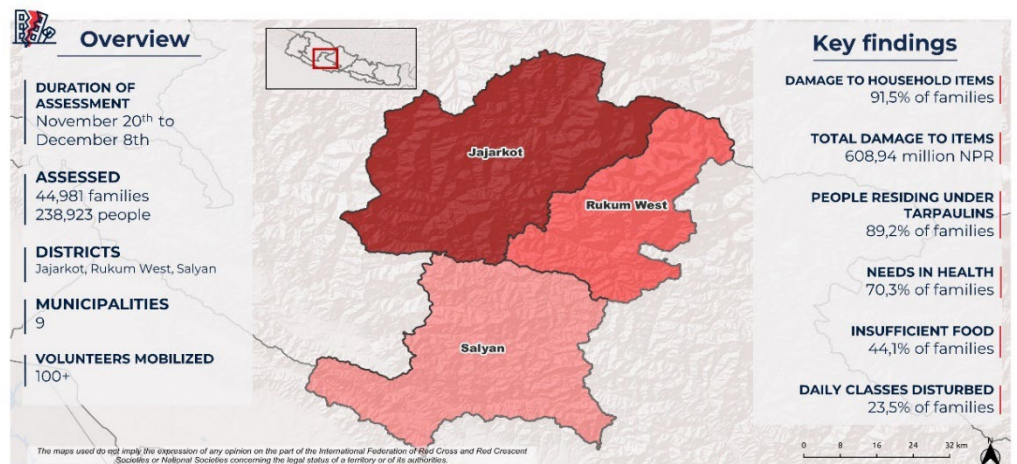
Summary of response

Overview of the host National Society and ongoing response



During the reporting period, NRCS delivered emergency assistance (at least one item) to **4,865 families** (24,325 people including 12,406 females) supported through the emergency appeal and other support. Another 2,327 people (including 952 females) were provided with mental health and psychosocial support (MHPSS) services through community based MHPSS interventions focused on household visits. Similarly, NRCS has distributed 7,500 dignity kits to women of reproductive age, 4,500 kishori kits¹ distributed to adolescent girls, and 580 solar lamps distributed to the affected people with support from the IFRC appeal and UN agencies. District-wise distribution details are provided in the earlier infographic. A total of 392 volunteers were mobilized for the emergency assistance distribution.

The Government of Nepal entrusted NRCS to conduct a detailed household assessment to cover all rural/municipalities of Jajarkot districts, two rural municipalities of Rukum West, and one rural municipality of Salyan District. NRCS trained and orientated 246 volunteers who were mobilized to conduct details assessments in the affected districts. As of 10 December 2023, NRCS has surveyed more than 44,981 households despite the challenges of tough terrain and remote areas. The findings of the assessment are published in an online [dashboard](#). Prior to this, an Initial Rapid Assistance was completed with the support of seven RT members and two MHPSS-trained volunteers.



¹ Kishori kit contain items for female adolescent – sanitary items, women undergarment etc.

NRCS has deployed a coordinated assessment and planning (CAP) in RCRC operations and trained staff members to strengthen coordination on a district and (Karnali) provincial level. IFRC Rapid Response Operations Manager arrived in the country on 30 November 2023. Together they will be leading a coordination team, along with an IFRC surge CEA officer to support and scale up the response.

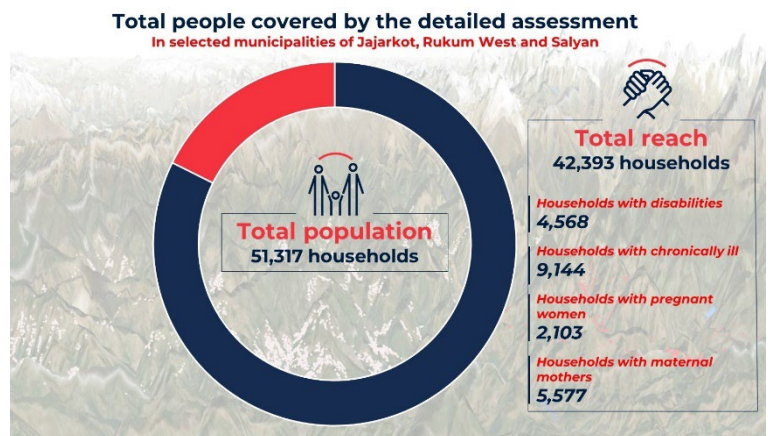
The NRCS shelter coordinator is currently in the field, aiding district chapter teams in response planning, emergency distribution, and monitoring. The mission seeks to identify gaps and challenges in the early response phases, guiding the subsequent stages of the operation and strengthening shelter coordination.

NRCS district chapters are actively assisting the government-led helpdesk for temporary shelter construction beneficiary registration and mobilizing volunteers in their respective wards to support people in the registration process.

Needs analysis

Needs analysis

The detailed household assessment from affected districts shows that the needs are more related to emergency and transitional shelter support integrated with emergency WASH support (toilet and water storage tanks) and health support, such as Mental Health and Psychosocial Support (MHPSS) and pre-hospital care. In the long run recovery efforts will be required to bring back the lives of people to pre-earthquake situations, taking into consideration earthquake resistance as well as inclusion.



Shelter: According to the detailed assessment data, 88 per cent of families need shelter support. As per the draft HCT recovery plan, 62,000 households are in need of shelter support where the Government is taking lead in providing immediate support while the shelter cluster partners planned to provide additional assistance to 1,500 families. As affected families are still living either in makeshift tents or in the open. Winter season has started and dropping temperature adds further challenge to the displaced families. Considering this, there is a pressing need to provide safe and inclusive emergency shelter through tarpaulins, blankets, and mattresses. In addition, there is the need for warm clothes and other winterization support, which could be covered by cash grants as the market remains functional (as per initial assessments).

Winterizations need: Winter season has already started in Nepal. In the hilly district like Jajarkot, Rukum West, the winter is harsh with very minimum rainfall. The minimum temperature can drop below zero. In this situation people with chronic illness and children could be worst hit as the risk of hypothermia persist. There is an unofficial news of at least 13 people affected by the Earthquake who were living out in open in Jajarkot Districts have lost their lives due to cold related complications. There is a high chance that more and more people will be impacted by the winter. NRCS is coordinating with the local authorities for distributing emergency shelter items to the affected families and to build the inclusive transitional shelter until they build permanent house.

Health: According to the preliminary findings of the detailed assessment data, 64 of the total surveyed household has faced some impact on health another 36 per cent said that they have experience of having some impact on mental health on them or their family members. Based on the assessment questions and field experience, the community people including children have fear and anxious about staying in their home, Another is the challenges in accessing the information which is forming a barrier to take informed decisions In addition, at least 76 per cent of surveyed household said that they have faced cold related illness among themselves or their family member after the

earthquake followed by diarrhoea in 16 per cent surveyed population. At the same time, the continuation of health services will be hampered by the fact that at least 36 health centres have been damaged (health cluster data) so that temporary community health services will be critically need in coming weeks and months.

Water, Sanitation and Hygiene (WASH): The detailed assessment data shows that 29 per cent of surveyed households have reported to have losses to the water, sanitation and hygiene due to the earthquake. Major loss was reported as toilet as most of the toilets are either damaged or are not in the usable state. This is followed by tap and water sources which might result in spread of the water borne diseases in the affected areas. This is further amplified by the lack of proper sanitation facilities which might have sustained irreparable damage.

Protection: As per the detailed assessment findings, 52 per cent of total surveyed household have reported that their houses have completed damaged by the earthquake and are residing in temporary shelters with high proximity. This might result in sexual and gender-based violence. In such situation there is an urgent need to provide MHPSS and raise awareness on violence (including SGBV) prevention, also promoting referral pathways among the affected population specially for women and children. Similarly, since a large number of households have been displaced and affected with human casualty, special care and attention towards children, pregnant and lactating mother, people with disability and those with chronic illness as well as the elderly will be required.

In addition, Nepal Red Cross is conducting a household detailed assessment (more than 85 per cent of targeted households completed) in Jajarkot, Rukum West and Salyan Districts to identify the detail need of the affected communities and provide response support accordingly.

As of 10 December 2023, 246 volunteers trained on mobile data collection have been mobilized to conduct assessment using KoBo toolbox and in turn have already collected more than 45,000 data out of over 50,000 households in Jajarkot Districts, Rukum West and Salyan Districts. In additions, a team is also in the affected districts to conduct rapid assessment whether markets can respond to the existing and possible increase of demand of construction materials such as CGI Sheet, Bamboo, Water Tanks, etc. after the temporary shelter construction will start together with WASH related activities. Details on RAM is in Section C- detailed operation report.

Operational risk assessment

The two main risks identified in the reporting period are:

- Access to the targeted areas remains challenging due to distance as well as road condition. NRCS and IFRC have deployed operational vehicles to support early activities as well as a security team to assess local conditions. Additionally, the provincial office of NRCS, based in Birendranagar, is providing logistics support to the affected district chapters.
- The earthquake destroyed the office in Jajarkot district. The team is working from a rented space which lacks workable internet access and power backup. IFRC is in discussion with NRCS to provide support for establishing a functional work space in Jajarkot District.
- The operation's IFRC-wide organizational structure has been finalized and agreed upon by the NRCS and all stakeholders involved. However, recruitment delays pose a risk to the operation's timeliness, especially concerning local-level positions. This is due to the limited capacity of the district chapters to manage operations of this complexity. To mitigate these risks, the IFRC is collaborating closely with the NRCS EOC, providing short-term surge support to the local operational teams.

B. OPERATIONAL STRATEGY

Update on the strategy

The primary goal of the NRCS response operation is to meet the urgent needs of around 10,000 families (50,000 people) impacted by the earthquake, particularly in the hardest-hit districts of Rukum West, Salyan and Jajarkot. This response also remains flexible to extend aid to neighbouring districts if additional needs arise while ensuring that additional considerations integrated in the response. In the **immediate phase**, the key areas of focus under the Emergency Appeal include:

- **Emergency Shelter:** Providing emergency shelter items to those whose homes have been damaged or destroyed.
- **Multi-Purpose Cash Assistance:** Offering financial support to allow affected families to meet their diverse and immediate needs.
- **Transitional Shelter:** Assisting in the provision of temporary housing solutions for those displaced or in need of shelter.
- **WASH:** Ensuring access to clean water, adequate sanitation facilities, and promoting hygiene practices.
- **Health Promotion:** Focusing on health awareness to prevent the spread of diseases and to promote overall well-being through MHPSS interventions.
- **Risk Communication and Community Engagement:** Keeping communities informed about risks and involved in the decision-making process for their recovery.
- **Protection Interventions:** Addressing the safety and rights of vulnerable populations, including women, children, the elderly, and those with disabilities.

Beyond the short-term relief efforts, this operational strategy will also support the longer-term recovery and resilience of the affected communities. Furthermore, the approach also integrates elements of preparedness for effective response, building stronger NRCS at local, provincial, and national level for sustainable humanitarian action, in line with the localization agenda.

C. DETAILED OPERATIONAL REPORT

STRATEGIC SECTORS OF INTERVENTION²

	Shelter, Housing and Settlements	People Reached: 24,325 people	
		Female > 18: tbc	Female < 18: tbc
		Male > 18: tbc	Male < 18: tbc
Objective:	<i>Communities in disaster and crisis affected areas restore and strengthen their safety, wellbeing and longer-term recovery through shelter and settlement solutions</i>		
	Indicator	Actual	Target

² The provided figures for target and actual reach below are mostly IFRC-wide. Once targets and areas of intervention for IFRC and members are finalized, further breakdown (e.g., Secretariat and Fed-wide) will be possible.

Key indicators:	<i># of people provided with basic and safe emergency shelter that adequately enables essential household and livelihood activities to be undertaken with dignity.</i>	-	10,000 (2,000 families)
	<i># of people (and households) provided with household items that support the restoration and maintenance of health, dignity, and safety, and the undertaking of daily domestic activities in and around the home.</i>	24,325	40,000 (8,000 families)
	<i># of staff and volunteers who completed training in emergency shelter and emergency household items.</i>	-	849 staff and volunteers and other technical people
	<i># of people who attended training/awareness raising sessions on transitional safe shelter.</i>	-	50,000

As of 4 December 2023, NRCS distributed 4,865 tarpaulins, 3,335 blankets to the affected population in Jajarkot, Rukum West and Salyan Districts. The items are being utilised to construct a temporary shelter for the individuals residing outdoors, whose houses were destroyed during the earthquake on 3 November 2023. In addition, NRCS also distributed 14 full sets of non-food relief items³ to the affected families Jajarkot (four) and 10 in Salyan Districts. A total of **24,325 people** were reached with the emergency shelter items.




A temporary shelter constructed in affected districts. (Photo: IFRC)


³ NFRI full sets includes Tarpaulin -1 piece, Blankets- 2-piece, female clothing- 1 piece, male clothing- 1 piece, suiting cloth- 3.5 meters, printed cloth - 7 meters, plain cloth - 4 meters, terri-cotton cloth - 4 meters, kitchen utensils - 1 set, water bucket -1 piece, Nylon rope- 10 meters, plastic packaging bag - 1 piece.

The beneficiary selection for transitional shelter support is being conducted in close coordination with municipality and ward offices, based upon the beneficiary selection criteria defined in the operation strategy. Starting from 3rd December, NRCS has been supporting authorities to scale up the government-funded temporary shelter scheme through the establishment of help desks in various locations (see more details in CEA section), directly reaching 9,105 individuals who now have access to government funding to build their transitional shelters. Once selected, beneficiaries will receive Cash and Voucher Assistance of NPR 50,000 (approximately CHF. 357) through bank transfer in two tranches. The technical team in the field will be mobilized to provide technical guidance for the transitional shelter construction as well as monitoring the construction process for cash grant.

Simultaneously, the NRCS will provide technical training to the technical staff and volunteers for shelter construction monitoring in coordination with the Department of Urban Development Building Construction (DUDBC) of the Ministry of Urban Development (MoUD). Also, trained volunteers will be mobilized to disseminate 10 key messages on Safe Shelter Construction.

The NRCS internal Cash Working Group has organized a technical team for a Rapid Market Assessment (RAM), focusing on critical markets for key items earmarked in conditional cash transfers for transitional shelter construction. After receiving orientation at NRCS HQ, the team was deployed to the field on 7 December 2023. In addition, since 2 December, NRCS Shelter Coordinator is in the field, monitoring the initial emergency response efforts and actively engaging with local, district, and provincial authorities to accelerate the NRCS shelter support while also contributing to the shelter cluster coordination efforts.

 Livelihoods		People Reached: -	
		Female > 18: -	Female < 18: -
		Male > 18: -	Male < 18: -
Objective:	<i>Communities, especially in disaster and crisis affected areas, restore and strengthen their livelihoods</i>		
Key indicators:	Indicator	Actual	Target
	<i># of people reached with livelihood assistance</i>	-	10,000 people (1,000 families)
	<i># of people provided with livelihood trainings</i>	-	150
As of 10 December 2023, no significant developments warrant reporting. It is expected that livelihood-related activities will only start in the recovery phase and depending on the funding coverage.			


 Multi-purpose Cash		People Reached: -	
		Female > 18: -	Female < 18: -
		Male > 18: -	Male < 18: -
Objective:	<i>Households are provided with unconditional/multipurpose cash grants to address their basic needs</i>		
Key indicators:	Indicator	Actual	Target
	<i># of people (and households) who successfully received cash for basic needs after being identified and processed for transfer</i>	-	50,000 people (10,000 families)

Based on funding secured to date, the IFRC-wide target for MPC is 4,000 families, including around 1,200 under IFRC Secretariat funding. The cash support, amounting to NPR 15,000 (approximately CHF 98), aims to address their basic needs, particularly those related to the approaching winter. The amount is agreed among all Cash Working Group Members and revised annually as part of the HCT mechanism.

Currently, the validation of beneficiary lists is underway based on the detailed assessment and has been completed in some municipalities. The preferred transfer mechanism will be bank transfer, aligning with previous successful experiences in the country and reflecting beneficiary preferences. Among the 51,000 families surveyed under the detailed assessments, about 45 per cent declare having a bank account. In case the targeted households do not have access to banking facility, the NRCS will either support them to open a bank account (this was done successfully in previous operations) or provide support through cheque/cash in envelope.

A meeting with the regional teams - logistics and Cash and Voucher Assistance (CVA) - was held on 9 November 2023 to discuss the most appropriate cash transfer modality. It will be a direct beneficiary transfer from the IFRC existing bank account to beneficiary bank account. After thorough consultation, involving APRO and Geneva finance and logistic teams, the cash transfer operation under MDRNP016 utilizes IFRC Nepal's Standard Chartered Bank Account. This is considered as acceptable temporary solution, given IFRC Nepal has gone through required logistic and financial procedures prior contracting Standard Chartered Nepal. Therefore, transfer mechanism for the CVA operation will be transfer to beneficiary bank account.

Also, to note that the cash working group within the Humanitarian Country Team (HCT) has been monitoring the market functioning in the initial weeks following the disaster, and the findings shared to date suggest that the cash modality will be applicable in this operation (also in line with the guidance from the authorities). In addition, NRCS has dispatched a RAM assessment team on 7 December to reconfirm some of the findings, with a particular focus on shelter items.

 Health & Care <i>(Mental Health and psychosocial support / Community Health / Medical Services)</i>	People Reached: 2,327 people		
	Female > 18: tbc	Female < 18: tbc	
	Male > 18: tbc	Male < 18: tbc	
Objective:	<i>Strengthening holistic individual and community health of the population impacted through community level interventions and health system strengthening</i>		
Key indicators:	Indicator	Actual	Target
	<i># of people reached through RCEC services (mobile clinic)</i>	-	16,800
	<i># of people reached through MHPSS and PFA services</i>	2,327	43,622
	<i># of people reached by community health services</i>	-	50,000
	<i># of health facilities rehabilitated/reconstructed</i>	-	TBC

As of 7 December 2023, 2,327 including 952 females were reached through the mental health and psychosocial support interventions from trained volunteers. Two MHPSS trained volunteers are on the ground since day one providing Psychological First Aid (PFA) to the people mostly children who are severely affected by the earthquake and its aftermath. A surge MHPSS Delegate from IFRC/Danish Red Cross arrived in country on 21 November and travelled to the affected areas on 22 November together with the NRCS health department colleagues to set-up MHPSS response. Two Psychological first aid (PFA) trainings were conducted in Jajarkot and Rukum West in November 2023 reaching out to 28 volunteers including 17 female from Rukum West and 28 volunteers including 13 female from Jajarkot Districts.



NRCS staff conducting MHPSS session with children in affected districts. (Photo: IFRC)

NRCS has planned to deploy its Red Cross Emergency Clinic (RCEC) services from 19 December onwards. The clinic (probably in its modular form) will be organized in coordination with the local hospitals to provide basic health services to the affected people as well as providing referral services as required.

The NRCS/IFRC operation coordination team participated in the provincial health cluster meeting in Surkhet on 8 December 2023. The meeting emphasized the importance of addressing identified gaps and risks in community health services, particularly the challenges of reaching remote rural municipalities. Key areas of intervention were identified, including support for community health officers, enhanced coverage in remote wards, and the imperative for hygiene promotion across affected communities. The discussion further highlighted potential outbreaks, vigilance against cold-induced illnesses, and challenges in safe drinking water access.

NRCS will support community health services in the affected areas, safeguarding people from preventable diseases while they are living under makeshift tents or transitional shelters. This comprehensive response will involve effective communication at the Palika level by trained volunteers, alongside other planned response activities.



Water, Sanitation and Hygiene

People Reached: -

Female > 18: -	Female < 18: -
Male > 18: -	Male < 18: -

Objective:

Ensure safe drinking water, proper sanitation, and adequate hygiene awareness of the communities during relief and recovery phases of the Emergency Operation, through community and organizational interventions

Key indicators:


Indicator	Actual	Target
# of people reached by WASH assistance	-	10,000 (2,000 families)

# of emergency toilets constructed	-	2,000
# of sanitation facilities enhanced	-	200
# of people reached by hygiene promotion activities	-	50,000
# of handwashing stations constructed	-	2,000

As of 22 November, 200 buckets and 132 hygiene kits were dispatched from NRCS warehouses to the affected areas, however NRCS Emergency Operation Centre (EOC). has not received data on distribution to date. In addition, IFRC local procurement of hygiene items is ongoing to complement existing pre-position stocks. A total of 3,299 kits have been consigned to NRCS warehouses during the reporting period. Distribution will be planned on the basis of needs identified in the detailed assessment.

NRCS PFA-trained volunteers are on the ground, delivering essential community health messages on hygiene and sanitation to the affected populations. The operation will scale up these activities in the coming weeks.

In addition to conditional cash for shelter, 2,000 families with specific needs will receive a targeted cash grant of NPR 15,000 (approximate of CHF. 107) for WASH assistance. This funding will support initiatives such as toilet construction, water storage management, and hand-washing facilities.

 Protection, Gender and Inclusion	People Reached: -	
	Female > 18: -	Female < 18: -
	Male > 18: -	Male < 18: -

Objective:	<i>Communities identify the needs of the most at risk and particularly disadvantaged and marginalized groups, due to inequality, discrimination and other non-respect of their human rights and address their distinct needs</i>
-------------------	--

	Indicator	Actual	Target
Key indicators:	# of RCRC staff and volunteers trained on PGI	-	90
	# of people reached with referral services	-	TBC
	# of people reached with orientation session on prevention of SGBV	-	50,000
	# of child friendly spaces established	-	16
	# of people received assistive devices following the screening camps	-	600

NRCS distributed 7,500 dignity kits to the women of reproductive age affected by the Earthquake in Jajarkot, Rukum West. In addition, 3,640 kishori kits were distributed to adolescent girls. This was provided from NRCS existing preposition stocks as well as support from the UNFPA.

IFRC local procurement to replenish the stocks is ongoing with delivery of 735 dignity kits to NRCS warehouses. IFRC will be supporting a scale up of distributions in the affected areas.

For the people reached with referral services, orientation session on prevention of Sexual and Gender-Based Violence (SGBV), will be reported in next Operation Update. The establishment of child friendly spaces and distribution of assistive devices depends upon the need which will be identified by the details assessment expected to be completed mid December 2023.



Lactating mothers, young children, elderly, etc. are still residing in the temporary shelter. NRCS is expediting the beneficiary selection process for the transitional shelter cash grant. **(Photo: IFRC)**



Community Engagement and Accountability

People Reached: 9,105

Female > 18: -	Female < 18: -
Male > 18: -	Male < 18: -

Objective:

Key indicators:

Indicator

of feedback mechanism established

Actual

In progress

Target

4

The Namaste Hotline-1130, free of call hotline service of Nepal Red Cross Society continued to receive queries on various aspect of the operation including sectoral information, shelter construction, etc. from affected districts. As

of 10 December 17 feedback have been received and responded from the earthquake affected districts. Most for the feedback received on the hotline are related to queries on relief distribution, follow-up on relief distribution, etc. Most of the queries have been resolved in coordination with the Districts Chapters.

The initial findings from the ongoing detail assessment shows that Radio and social medial are the most preferred way to receive the information in the community and 89 per cent of the responded shared that they had not received the earthquake safety and other disaster related safety information's before the recent earthquake. As a response to the findings, the public service announcement (PSA) and jingles related with earthquake safety, fire safety, prevention against gender-based violence, Cold

Wave, sanitation, Suicidal prevention, NRCS Hotline promotional jingles etc. had been developed, compiled and shared with the district team for broadcasting from the local radios and also to share the information using megaphones in the community. Simultaneously, NRCS volunteers mobilized in the community for the assessment and PSS are promoting the Hotline 1130 to provide opportunity for the feedback and concern to NRCS.

Upon request from the Government, NRCS has established help desk in Jajarkot, Rukum West and Salyan together with the local government representative to support the registration process for shelter cash grant for temporary shelter construction provided by the Government. NRCS volunteers in the helpdesk are supporting affected families in registration, verification and facilitating them in documentation.



NRCS volunteers support help desk in Rukum West. (Photo: NRCS)

S.No.	Districts	# of help desks established	People supported	Date
1.	Jajarkot	36	8,000	4 to 13 December 2023
2.	Rukum West	18	640	3 to 10 December 2023
3.	Salyan	6	465	5 to 14 December 2023

Enabling approaches



National Society Strengthening

Objective:			
Key indicators:	Indicator	Actual	Target
	# of volunteers insured throughout the operation	425	TBC

Currently, 425 volunteers of NRCS are already insured through IFRC global accident insurance in Geneva. The renewal of this policy for volunteers is being renewed for another term of one year in December 2023.

The EOC team is also considering various ways to leverage this operation as an opportunity for positioning NRCS vis-à-vis authorities at all levels, including in the support to the temporary shelter programme of the government, coordination on health related to RCEC deployment and community health issues (including vaccination campaigns, etc.).

NRCS has deployed an IFRC-trained operation manager to the field with a focus on enhancing coordination with government authorities, INGOs, NGOs, and other stakeholders. This operation aims to identify opportunities to strengthen NS engagement at the provincial level, with a particular emphasis on developing and reinforcing the NRCS auxiliary role.

There is also agreement among NRCS and IFRC members to use the PER approach at a later stage of the operation with initial discussions planned online in January 2024. Danish RC is also planning to conduct a logistics capacity assessment in January in coordination with APRD as well as NRCS and IFRC country delegation. This should inform further resource mobilization for the same.

Finally, the IFRC and membership are supporting NRCS to increase its visibility of the operation through (1) joint field visits of communications colleagues, (2) daily support for social media engagement and (3) technical support to hold the joint press conference, which was held on 4th December 2023 in Kathmandu, 1 month after the earthquake.



Coordination and Partnerships

Objective:			
Key indicators:	Indicator	Actual	Target
	<i>Strengthened coordination within the IFRC membership and within the Movement to bring technical and operational complementarity</i>	Yes	Yes
	<i>Enhanced cooperation with external partners</i>	Yes	Yes

NRCS is actively coordinating with the Ministry of Home Affairs, its National Disaster Risk Reduction and Management Authority (NDRRMA) and its National Emergency Operating Centre (NEOC), Karnali provincial government, District Disaster Management Committee (DDMC) as well as affected municipality and ward offices. NRCS structure is fully contributing to the DRM system of Nepal (as per 2017 Act) and in this operation contributes to the “one-door-policy” of the government. NRCS completed IRA together with police and local authorities and is now completing the detailed household assessment across most affected areas at the request of the government.

Ongoing coordination with the HCT, including shelter cluster coordination is also ensured. IFRC/NRCS co-lead the shelter cluster and contribute to coordination meetings, situation reports, etc. NRCS and IFRC are also active members of other key clusters as well as the cash working group and the RCCE working group. Save the Children is also very active in the province and co-leads the shelter cluster at provincial level, so that there will increasing collaborations in coming weeks.

In terms of membership coordination, the IFRC Country Delegation is ensuring IFRC-wide planning and implementation with NRCS EOC at the center:

- The operational strategy of the appeal was designed after three intensive rounds of planning among NRCS sector leads, IFRC and all seven in-country members.
- Three surge personnel are now supporting the operation. SIMS was activated mid-November and a coordinator was appointed (funded by the German Red Cross) who is actively providing remote support to the operation in coordination with NRCS and Danish Red Cross. An Operations Manager funded by the British Red Cross arrived in the country on 30 November 2023 to support the operation. An MHPSS surge from the IFRC/Danish Red Cross arrived in Nepal on 21 November 2023 and is supporting the two earthquake operations (MDRNP015 and MDRNP016). In addition, IFRC deployed a CEA officer to support the operation and to strengthen NRCS capacity in this key activity while NRCS has appointed an IFRC-trained operations manager in the province for a short time.
- Coordinated field visits are ongoing, with focus on security, communications, programme, shelter and MHPSS support from 22 November 2023.
- The operations coordination team comprising an IFRC trained operations manager from NRCS and the IFRC RR operations manager have been deployed to Karnali province to coordinate the operational scale up on the ground.
- The implementation of this operation hinges on collaborative planning and budgeting, encompassing NRCS domestic fundraising, bilateral contributions to the appeal, and support through the IFRC Secretariat. Likewise, a joint timeline for the operation has been prepared and shared among all stakeholders.



Secretariat Services

Objective:			
Key indicators:	Indicator	Actual	Target
	<i># of IFRC monitoring and support missions</i>	4	TBC
	<i>% of financial reporting respecting IFRC procedures</i>	-	100%
	<i>Logistic department provides constant support to NRCS's logistic unit for replenishment and other procurements</i>	Yes	Yes
	<i># of evaluations conducted for this operation</i>	-	1
	<i># of surge personnel deployed</i>	3	3

The IFRC Country Delegation is providing strategic and operational advice to the NRCS leadership and the EOC in terms of overall coordination, representation, planning as well as compliances (see above under NSD and coordination sections). Additionally, the IFRC and its members are jointly conducting monitoring visits to the affected areas. Two teams comprising of security, communication and programme in each team visited Jajarkot and Rukum West. Another two teams comprising of IFRC Head of Delegation, IFRC Comms, NRCS CDD Director, MHPSS surge from Danish Red Cross and NRCS health team visited Jajarkot and Rukum West to report from the ground zero and monitor relief distribution and detail assessment and an in-country membership meeting was held on 27/11/2023 to report back on the mission.

Furthermore, two vehicles from the IFRC and members along with drivers are in Jajarkot and Rukum West to provide fleet support for the teams including monitoring team, assessment and others as required. All the procurement that cannot be managed by NRCS district chapters (as per NRCS policy) will be managed by the IFRC country Delegation/APRO in close cooperation with NRCS HQ. The IFRC will use existing framework agreements where relevant, in particular for medium thermal blankets and tarpaulins procurements.

D. FUNDING

As of 19 December 2023, 9 per cent of the total funding requirement has been successfully pledged to the IFRC Secretariat Emergency Appeal. The donor response to date can be found here: [link](#)

IFRC Secretariat Coverage	Amount Raised (CHF)	Funding Gap (CHF)	Coverage %
Hard Pledges + In kind + Soft Pledges	462,016	4,537,985	9%
Federation-wide Coverage	Amount Raised (CHF)	Funding Gap (CHF)	Coverage %
IFRC Secretariat + Bilateral support to NRC	1,286,663	5,713,337	18%

-

Contact information

For further information, specifically related to this operation please contact:

At the Nepal Red Cross Society:

- Umesh Dhakal, Executive Director; email: umesh@nrccs.org;
- Sagar Shrestha, Head of Disaster Management; email: sagar.shrestha@nrccs.org

At the IFRC Country Delegation in Nepal:

- Azmat Ulla, Head of Delegation, Country Delegation Nepal; email; azmat.ulla@ifrc.org
- Herve Gazeau, Programme Coordinator; email; herve.gazeau@ifrc.org
- Simon Owen, Operations Manager; email ; OpsManager.Nepal@ifrc.org

At the IFRC Asia Pacific Regional Office in Kuala Lumpur:

- Alexander Matheou, Regional Director; email: alexander.matheou@ifrc.org
- Juja Kim, Deputy Regional Director; email: juja.kim@ifrc.org
- Joy Singhal, Head of Health, Disaster, Climate and Crisis unit; email: joy.singhal@ifrc.org
- Felipe Delcid, Lead of Evolving Crises and Disasters; email; felipe.delcid@ifrc.org
- Naimatullah Akbari Operations Coordinator; email: opscoord.southasia@ifrc.org
- Rishi Ramrakha, Head of Global Humanitarian Service & Supply Chain Management. email: rishi.ramrakha@ifrc.org
- Afrhill Rances, Communications Manager; email: afrhill.rances@ifrc.org

At IFRC Geneva:

- Christina Duschl, Senior Officer Operations Coordination; email: christina.duschl@ifrc.org

For IFRC Resource Mobilisation and Pledges support:

- Salinthip Tangpanjapon; Senior Officer- Relationship;
email: PartnershipsEA.AP@ifrc.org/joyce.tangpanjapon@ifrc.org

For In-Kind Donations and Mobilisation table support:

- Nuraiza Khairuddin, Regional Logistics Manager; email: nuraiza.khairuddin@ifrc.org

For Performance and Accountability support (planning, monitoring, evaluation and reporting enquiries)

- Mursidi Unir, PMER in Emergencies Coordinator, email: mursidi.unir@ifrc.org

Reference documents



Click here for:

- [Previous Appeals and updates](#)
- [Emergency landing page](#)

How we work

All IFRC assistance seeks to adhere the **Code of Conduct** for the International Red Cross and Red Crescent Movement and Non-Governmental Organizations (NGO's) in Disaster Relief, the **Humanitarian Charter and Minimum Standards in Humanitarian Response (Sphere)** in delivering assistance to the most vulnerable, to **Principles of Humanitarian Action** and **IFRC policies and procedures**. The IFRC's vision is to inspire, encourage, facilitate and promote at all times all forms of humanitarian activities by National Societies, with a view to preventing and alleviating human suffering, and thereby contributing to the maintenance and promotion of human dignity and peace in the world.