

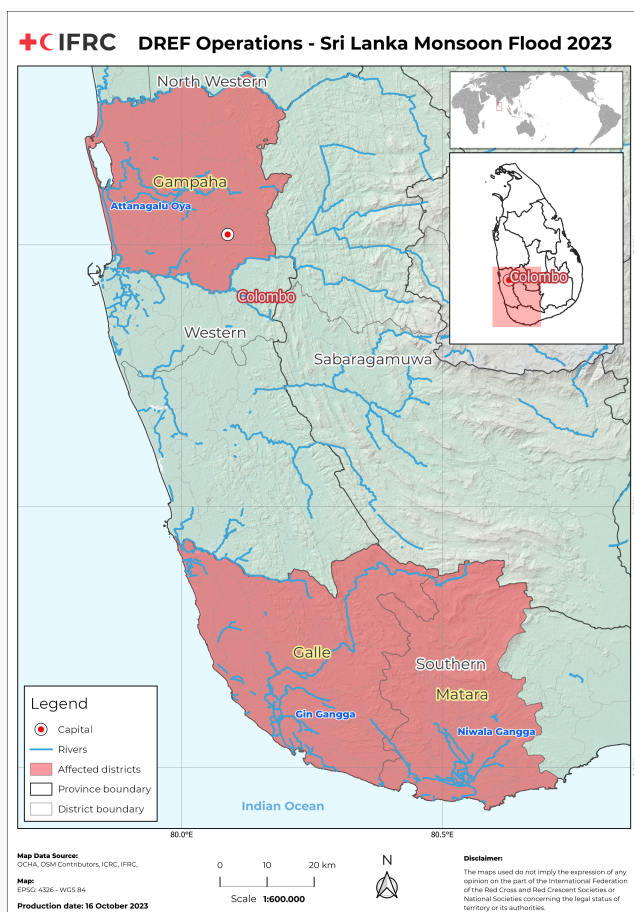


Volunteers from the SLRCS Galle branch distributing drinking water bottles to the affected families (Photo: SLRCS)

Appeal: MDRLK018	Country: Sri Lanka	Hazard: Flood	Type of DREF: Response
Crisis Category: Yellow	Event Onset: Sudden	DREF Allocation: CHF 359,690	
Glide Number: FL-2023-000196-LKA	People Affected: 75,000 people	People Targeted: 14,750 people	
Operation Start Date: 2023-10-19	Operation Timeframe: 4 months	Operation End Date: 2024-02-29	DREF Published: 2023-10-20

Targeted Areas: **Sabaragamuwa, Southern, Western**

Description of the Event



Districts that have been severely impacted by the current flood and adverse weather. IFRC/IM team map

What happened, where and when?

With the intensification of the southwest monsoon, Sri Lanka has experienced heavy rainfall in the Western, Sabaragamuwa, and Southern provinces. Based on the annual rainfall map of Sri Lanka, the southwest monsoon brings rain mainly from May to August to these regions of the island, while the northeast monsoon rains occur in the northern and eastern regions in December and January.

This unusual expansion of the southwest monsoon in the country began early in October 2023, but severe rainy conditions were encountered in the aforementioned provinces starting on 6 October 2023, and a red warning was issued to 7 districts on 7 October 2023.

However, the Disaster Management Centre stated on October 9, 2023, that a large number of people were displaced owing to floods and landslides in the Gampaha, Matara, and Galle districts. This was the breaking point for SLRCS, which launched a larger response effort and assessed the situation in the three areas mentioned above [1]. The adverse weather conditions for more than a week caused seven deaths, while more than 75,000 people belonging to 20,450 families in 13 districts were affected.

The heavy rains, high winds, and floods due to the water levels of the Nilwala Ganga River in Matara, Gin Ganga River in Galle, Kalu, and Atanagalu Ganga Rivers in Gampaha districts have risen to alarming levels, and the water overflowing entered the low-lying areas. The coastal districts of Matara and Galle in the Southern province and the Gampaha district in the western province were the worst affected, with most parts flooded for more than a week.

The National Building Research Organization (NBRO) issued several 'Red' (Level 3), 'Amber' (Level 2), and 'Yellow' (Level 1) landslide alerts for several areas in the Colombo, Galle, Kalutara, Matara, Rathnapura, Gampaha, Hambantota, Kandy, and Kegalle districts. On 7 October 2023, the Ceylon Electricity Board (CEB) decided to disconnect the power supply from its grid substation in Matara as a safety precaution, as the water level increased to the top level of the electricity line in some areas in Matara districts.

A total of 32 Divisional Secretary divisions are severely affected. As a result of the continued heavy rains and strong winds (over 70 km/h), houses have been damaged, and trees have fallen, blocking the main access to several districts. In addition, due to the severity of the situation, agricultural lands and standing crops have been damaged in low-lying areas of the Gampaha, Matara, and Galle districts. According to the SLRCS's initial assessment at the branch level, more than 7,500 farmers have lost their crops, and daily wage workers have been severely affected in the Matara district alone.

The water levels increased to 10 feet in the village, and the houses, common buildings, and markets were inundated. On 6 October 2023, a large tree fell on a moving bus in Colombo, killing five people and injuring five others; one person died when a rock fell on his house during a mudslide in the Galle district. According to the DMC, mudslides damaged hundreds of houses in Matara and Galle districts.

Due to the increase in the water level of the main rivers, the small and medium-scale bridges and culverts have gone underwater, cutting off access roads at several places where people were stranded or forced to wait until the water receded. The DMC also reported that many schools have been flooded due to the heavy rainfall in those areas since 19 September 2023, and that students have lost their school materials and stationery during the flooding that affected their houses.

The schools in several educational zones in the Matara district were temporarily closed on 9-10 October due to unfavorable weather conditions. The Department of Irrigation has extended a flood warning message issued for the Gin River Basin in the Galle district, the Nilwala River in the Matara district, and the Attanagalu Ganga River in the Gampaha district.

The people affected by the flood, many residing on the banks of the rivers, are also concerned about the presence of crocodiles that escaped from the major rivers, which has restricted people from going back and accessing their homes and areas. The tourist hotels in the Akuressa division in the Matara district have been flooded, affecting the tourism industry. Most of the areas in Akuressa town have been underwater for the last seven days, and the situation has severely affected the livelihood of the people in the tourism industry.

Red alerts were issued by the disaster management center, the Department of Irrigation, and the National Building Research Organization (NBRO) for the districts of Gampaha, Matara, and Galle. Residents were advised to evacuate from low-lying areas and seek out secure safe places. As the floodwater level rose to 10 feet, there was a corresponding rise in the overall population impacted.

Due to the adverse weather conditions, the existing water and sanitation facilities in the communities are affected and inundated, including the sewerage lines and drinking water sources. Due to the impact of landslides, people living in low-lying areas have also lost their basic amenities at the household level. Initial reports from the Divisional Secretariats reveal that there is a need for essential household items and there are challenges as transportation of goods to affected areas is disrupted due to road blockages. In addition, households will require support to cover their immediate basic needs as the local employment opportunities have been reduced due to continuous rain and exacerbated by the current economic crisis that is continuously affecting the households' economic condition.

[1] http://www.dmc.gov.lk/images/dmcreports/Situation_Report_on_2023_1696811740.pdf

Notes:

Table 1: Damaged details published by Disaster Management Center (DMC), on 9 October 2023.

Figure 1: The Metrological department's 9-day weather prediction.. <http://222.165.186.51/public/emfc10d.html>

No	Districts	# affected families	# affected people	# fully damaged houses	# Partially damaged houses	# safer centers	# Families at safer centers	# People at safer centers
01	Gampaha	8088	33488	01	53	6	76	314
02	Matara	7784	27523	3	512	13	930	3336
03	Galle	3074	8970	3	255	1	65	220
	Total	18,946	69,981	7	820	20	1,071	3,870

http://www.dmc.gov.lk/images/dmcreports/Situation_Report_on_2023_1696811740.pdf



Table 1

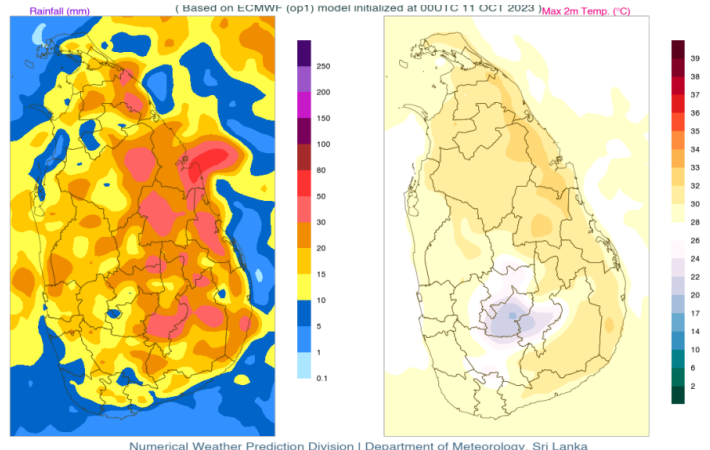


Figure 1

Scope and Scale

According to the Disaster Management Centre’s (DMC) situational report as of 9 October 2023 at 06:00, more than 75,734 people from 20,480 families were impacted by floods, severe winds, and mudslides in the low-lying areas of 13 districts. A total of 69,984 people from 18,946 families alone were affected in the Gampaha, Matara, and Galle districts.

The Department of Meteorology, Sri Lanka, has reported that the current monsoon is still active in Western, South, Southwestern, and Sabaragamuwa provinces, further exacerbating the current situation. The water levels in the major rivers in each of the districts are rising to an alarming level, which keeps the floodwater at an unprecedented level in the most affected divisions, as well as in the low-lying areas, especially along the banks of the rivers, where people who reside in the areas cannot return to their homes.

The situation is worsening because the river water has begun to overflow from the flood protection bund of the three major rivers (Attanagalu, Nilwala, and Gin Rivers) in the most affected Gampaha, Matara, and Galle districts. The Director of Hydrology & Disaster Management at the Dept. of Irrigation has informed that flood levels in nearby lowlands may increase further. People living in low-lying areas in the districts are advised to remain vigilant. Matara and Galle districts are also prone to the risk of landslides due to the prevailing showery conditions. The National Building Research Organization (NBRO) issued a landslide warning to several divisions in both districts at different levels 1 to 3. According to the DMC report as of 9 October 2023, about 20 safer places, such as temples and schools, set up by the Disaster Management Centre as temporary shelters for the displaced people, are still operational in all three districts, with 3870 persons from 1071 households.

Their immediate needs are being addressed by the government authorities and DMC. Tri-forces are providing cooked foods to the people in safer locations. The access within the district is all blocked, and roads in the low-lying areas are all inundated by the floodwaters, further delaying the response efforts, and people are facing difficulties in accessing their residences. A week-long heavy rain has severely affected the livelihood of the farmers and daily workers. Markets and essential services in the areas were interrupted due to floods, landslides, road, and rail line blockages. The situation is further exacerbated by the current economic crisis. However, it is common for local market actors to reopen as soon as the situation normalizes, enabling people to access goods and services in the local markets and divisional-level markets. The main markets in each district are still functioning and connected with local suppliers, as confirmed by the branch assessment team.

The existing economic crisis in the country has already worsened the people’s living standards. Several families in the most affected districts have temporarily lost their income and the means to provide for themselves and their dependents with food and necessities. Furthermore, families with infants, persons with disabilities, people living with chronic illnesses, and pregnant and lactating women might need special support and care as the floodwater does not recede for more than a week. Poor and vulnerable farmers live in riverbanks and low-lying areas in the Gampaha, Matara, and Galle districts. The major rivers overflow during the monsoon season, affecting poor and vulnerable people living in the riverbanks and adjacent low-lying areas that need assistance to meet their basic needs such as food, medicine, and other essential non-food items. Furthermore, most of these communities are daily wage earners, and they have lost their income due to the current economic crisis.

The National Society is currently responding to the known complex humanitarian crisis in the country. Sri Lanka - Complex Emergency Appeal (MDRLK014), which is currently underway, with a target population of 500,000 people, has almost

implemented the planned intervention and activities under the EA. When sudden events occur, the National Society seeks additional support to aid the affected.

At the same time, MDRLK017 provided support for Gampaha and Galle for the Dengue response, while Matara was just supported for the flood response. The project is scheduled to be finished by 31 October 2023. SLRCS has finished all ground-level MDRLK017 activities. Matara districts' flood-hit villages are not the same as in the DREF-MDRLK017; the communities were significantly impacted on the Nilwala River's bank, where the water level surged over its capacity and spilled.

Given the country's current situation and increased needs, this DREF assistance is required to assist those affected by the adverse weather conditions that authorities expect to worsen in the coming days. On 10 October 2023, the Meteorology Department's natural hazards early warning center issued a red alert on thundershowers accompanied by severe lightning for 12 districts. Heavy showers of 75-100 mm can be expected in Western, Uva, Central, Southern, and North-western. Furthermore, heavy showers are forecasted in the same regions according to the Metrological department's 9-day weather prediction [2].

According to the forecast and the continuing monsoon, the country will receive more rain. This IFRC-DREF operation is crucial for the National Society to acquire financial and human resource (HR) support to react to the needs of the families most impacted by the current floods.

[2] <http://222.165.186.51/public/emfc10d.html>

Previous Operations

Has a similar event affected the same area(s) in the last 3 years?	Yes
Did it affect the same population group?	Yes
Did the National Society respond?	Yes
Did the National Society request funding form DREF for that event(s)	Yes
If yes, please specify which operation	MDRLK015, MDRLK017.

If you have answered yes to all questions above, justify why the use of DREF for a recurrent event, or how this event should not be considered recurrent:

MDRLK015 and MDRLK017 were both covered the same three districts. In MDRLK017, Gampaha and Galle were supported for the Dengue response, but Matara was only supported for the flood response. MDRLK015 concluded in February 2023, and MDRLK017 will be completed at the end of this month (31 October 2023). However, SLRCS has completed all of the actions planned under the MDRLK017 at the ground level, and branches are working on cash payments. Furthermore, the flood-hit villages in the Matara districts are not the same as stated in the DREF-MDRLK017; the communities badly impacted in the Matara district located on the bank of the Nilwala river, where the water level was raised above its capacity and spilled.

However, the severity of the current impact is high due to the river water overflowing at the same time the heavy showering was experienced in all three districts, the rivers are getting additional water from the central province, and both districts received more rain within a very short period, according to the Department of metrological more than 100mm were experienced every day between 6-9 October 2023 [3].

The flood water continues to be in the affected areas for more than a week. The immediate needs of the people are high. The people's livelihoods are severely affected which is further exacerbated to the people's lives due to the current economic unstable situation in the country. The current condition exacerbates the danger of dengue fever in the targeted districts, which have been heavily impacted by the ongoing dengue outbreak.

[3] http://www.dmc.gov.lk/images/dmcreports/Heavy_rain_advisory_1330_hrs__1696580690.pdf

Lessons learned:

Cross-cutting sectors such as Protection, Gender, and Inclusion (PGI,) and Community Engagement and Accountability (CEA) are important to incorporate into planned interventions. As such, this operation will ensure that PGI and CEA are integrated across all sectors. Indeed, according to the post-distribution monitoring survey, SLRCS maintains very successful community feedback mechanisms at the field level, 24/7. As such, the National Society will work on maintaining this system through a hotline to receive and respond to community grievances.

SLRCS has previous experience distributing cash to 750 beneficiaries in Matara district, LKR 20,000 per household, using bank transfer in partnership with "Sampath Bank PVT LTD" during the MDRLK017.

The elderly, people with disabilities, pregnant and lactating women, women-headed households, and households with infants or young children are often more vulnerable to challenges related to access to nutrient-rich food and safe water during this situation. This operation will ensure alignment with the IFRC minimum standard commitments to gender and diversification in emergency programming, to secure due considerations for these vulnerable groups throughout implementation. To note, the ongoing Emergency Appeal operation (MDRLK014 - Complex Emergency) covers all the districts in Sri Lanka. However, the two operations will not overlap between the target groups and, hence will avoid duplication.

Current National Society Actions

Resource Mobilization	SLRCS Matara and Galle branches work with government agencies to provide the basic relief required by the affected communities. SLRCS is mobilizing the available resources in the SLRCS HQ warehouse including adult kits and baby kits. Galle and Matara's first-aid trained volunteers are already on the ground to support with first-aid services.
Activation Of Contingency Plans	BDRT teams and NDRT members are deployed for the assessment and distribution of essential household items in the affected areas. Initial response activities are conducted in the Matara district where more people are affected. To date, about 1,000 essential household items and 22 dry rations have already been distributed.
Shelter, Housing And Settlements	Branches provide household items for the affected communities, including dry ration packs (basic food items) that were affected by floods and landslides in the districts. Simultaneously, 1,000 basic household items were provided from SLRCS-NHQ to the affected district branches in order to assist and distribute to the displaced individuals. These 1,000 non-food goods are supplied from SLRCS's current stock of relief supplies, and SLRCS will replenish the stock with this IFRC-DREF funds. 50 packs of dry food are required to assist landslip victims; 22 packs have already been provided to the Galle branch, which will also be replenished from the IFRC-DREF funding.
Health	SLRCS is currently conducting three medical camps also providing first aid services to the flood-affected people in all three districts. The first team was already deployed in the severely affected divisions with volunteers to support the people who were trapped in the houses.
Water, Sanitation And Hygiene	Distribution of over 4,000 drinking water bottles to the flood-affected families in Galle and Matara districts have been made. The volunteers are currently deployed for the clean-up campaigns which support cleaning the flood water stacked places and drainages. Safe drinking water is one of the main concerns in the affected area.
Protection, Gender And Inclusion	SLRCS teams are maintaining minimum standards when helping all affected communities, ensuing additional focus on selecting the most vulnerable communities such as pregnant and lactating mothers, disabled communities, children, the elderly population, and the LGBTQ community.

National Society Readiness	SLRCS has been monitoring the extreme weather situation since the beginning of October 2023 and has started responding with the available resources. SLRCS has a strong branch network in all 25 districts of the country that can provide disaster/emergency relief. Over 100 staff members and 6,000 active volunteers have received disaster response training. At the national, district, and divisional (sub-district) levels, there are National Disaster Response Teams (NDRT), Branch Disaster Response Teams (BDRT), and Divisional Disaster Response Teams (DDRT). SLRCS has also trained 150 active members of disaster response teams specializing in water and safety. These members are well-trained in life-saving techniques and are ready to assist rescue operations in times of need.
Assessment	All three branches Gampaha, Matara, and Galle deployed their BDRT team, completed 72-hour assessments, and submitted the immediate needs of the community. They are also closely working with the government authorities to update and collect the information from the secondary sources to analyze the current situation.
Coordination	SLRCS is currently working closely with Government agencies, such as the Disaster Management Centre (DMC), the Military, District secretariats, and local authorities to respond to the current flood situation. In addition, SLRCS is closely coordinating with the International Federation of Red Cross and Red Crescent Societies (IFRC) Country Representation Office in Colombo, with the assistance of the IFRC Country Cluster Delegation (CCD) in New Delhi, and the International Committee of the Red Cross (ICRC) for this disaster response operation.

IFRC Network Actions Related To The Current Event

Secretariat	The in-country IFRC team is in close coordination with SLRCS and ICRC. The IFRC CCD and APRO offices have supported SLRCS in preparing this DREF application and planning the response. Furthermore, the IFRC CCD regularly shares in-country situation updates and developments with IFRC APRO. IFRC is providing technical support to SLRCS for the operation and coordinating with SLRCS for information sharing with the Movement and external partners. The IFRC CCD in Delhi and APRO provided further coordination support for information sharing and resources.
Participating National Societies	There is no Partner National Societies (PNS) presence in the country.

ICRC Actions Related To The Current Event

SLRCS has a longstanding working cooperation with the ICRC in implementing various programs. The ICRC has been working with SLRCS particularly in the areas of Restoring Family Links (RFL), Safer Access Framework and First Aid.

Other Actors Actions Related To The Current Event

Government has requested international assistance	No
National authorities	The national and local level Disaster Management agencies and district administrative units are leading the floods and landslide response across the country. According to the DMC, the Army, Air Force, Navy, and Police have been deployed to all affected locations. The Security Forces would carry out rescue operations when and where necessary. The Department of Irrigation has monitored

	the water levels in river basins and low-lying areas and provided alerts and warnings to the public in close coordination with the DMC.
UN or other actors	For the moment, there is no UN organization intervention related to the floods in the mentioned districts.

Are there major coordination mechanism in place?

The government is leading the coordination in an informal and bilateral manner. SLRCS is in close coordination with the authorities, DMC, and the Metrological department and together with the divisional secretariat and irrigation department are coordinating all the responses and early warnings activities about the ongoing adverse weather conditions. SLRCS branches closely coordinate and work with district-level authorities on assessments and providing relief. Also, the National Building Research Organization (NBRO) is middle of the coordination to inform and guide about the landslide risks and warnings.

Needs (Gaps) Identified



Health

The affected populace relies on the local government institutions for their medical requirements. The limited availability of health and care facilities is a consequence of transportation disruptions, severe weather conditions, and the need to relocate to safer areas.

In addition, the present economic crisis has caused disruptions to the health and care system and shortages of medications, both of which have worsened the health condition of the afflicted population. The Medical Offices of Health departments have cautioned the impacted districts that as the flood waters recede, a number of health-related complications have emerged. Dengue, Leptospirosis, and diarrhea are prevalent illnesses that impact the general populace following the conclusion of the wet season. The public health inspectors from the respective districts warned that diseases could spread through the mingling of feces with water, in addition to the transmission of epidemics caused by animals. Respiratory disorders and skin diseases are prevalent among them [4].

Therefore, general medical and clinical care, as well as First Aid Services, are required to reduce the risk of hospitalization and other complications. Already, SLRCS has initiated the provision of first aid to individuals impacted by the landslides. Due to prolonged disruptions to individuals' means of subsistence spanning over a week, all three districts are facing an urgent and critical shortage of food and water for human consumption. A significant proportion of the inhabitants residing in the riverside regions are impoverished due to the loss of their primary source of income; furthermore, many of them are incapable of providing sustenance for their children.

[4] <https://www.newsfirst.lk/2023/10/8/risk-of-floods-facilitating-the-spreading-of-rat-fever>



Water, Sanitation And Hygiene

In the aftermath of the floods, drinking water became polluted, limiting access to drinking water facilities in the impacted communities. Household wells are the primary source of drinking water in the communities. As the groundwater level rose to 10 feet in several parts of the impacted districts, particularly in the bank rivers and low-lying areas, all of these wells became polluted with flood water. Thus, well cleaning has been identified as an essential requirement within the inundated areas, in all three districts. Further, given the poor condition of the existing sanitary facilities of the affected people, sanitation and hygiene states have worsened due to extreme weather conditions.

There is a need to at least provide basic hygiene awareness through hygiene promotion using IEC materials to limit the spread of waterborne diseases and other communicable diseases. Similarly, conducting dengue awareness and cleaning the debris that blocks drainage and campaigns are also prioritized as immediate response activities since most of the areas have been identified as dengue high-risk areas according to the Epidemiology Unit of the Ministry of Health. Also, there is a need for sanitary napkins to address the hygienic difficulties among teenage girls and elderly women who are now in safe centers and neighboring households. Many of these women have lost their basic garments and are unable to reach the market.



Education

According to branch assessments done together with the authorities, children's stationeries for schooling have been damaged or lost due to floods, landslides, and house damages in all three districts. As the houses of poorer and low-income areas were affected, school stationeries and materials were damaged in some areas. Furthermore, school education is disrupted due to the relocation of families to safer places. There is a need to support the children of affected families with essential school stationeries to help them restart their education and schooling.

Furthermore, the education of children has been severely hampered and exacerbated by the ongoing economic crisis. The government took action to close the schools on 9-10 October 2023, particularly in the Matale district. Access to the schools also got inundated as both teachers and children could not commute to school. The exact number of most vulnerable families will be identified during detailed assessments for targeting.

In addition, 62 families in Matara and Galle, who were impacted by the landslides have completely lost their children's school stationeries in the muck.



Livelihoods And Basic Needs

More than 75,000 individuals have been impacted by the floods and have lost their livelihoods, while over 3,000 people have been moved to safer areas. More than 10,000 farmers have been impacted and have lost crops and farming activity.

The affected people in the districts of Matara and Galle necessitate sustenance in the form of food and drinking water. Consequently, it is imperative to provide them with dry rations to address their food needs. In addition, numerous unskilled laborers have lost their daily wages as a result of the inclement weather. Assistance to fulfill their most basic needs must be increased. As a result of the food scarcity caused by the flooding, the communities are concerned for the well-being of their children. Furthermore, once the water level has receded, they will be obligated to restore and clean their homes, which will be challenging due to a lack of funds.



Community Engagement And Accountability

Community accountability and feedback mechanisms will be seamlessly integrated into the operation to ensure that those to be assisted have timely and accurate information about SLRCS's assistance and services and staff and volunteer conduct. SLRCS volunteers and community members will help with assessments throughout the operating cycle. State branches will monitor and communicate with recipients throughout relief distributions. All distribution points will have banners and charts describing the items being distributed. Already, SLRCS has an efficient mechanism for community feedback. They operate two distinct hotline numbers that are available round the clock to receive and resolve community feedback and system inquiries. This further ensures effective accountability and engagement with the community.



Shelter Housing And Settlements

Many houses of the affected population in the targeted districts have been fully or partially damaged and need assistance to repair them. According to the DMC update, a total of 7 houses are fully damaged and 820 partially damaged houses are reported.

People with houses damaged have been moved to host families in the neighboring villages and most of the people are in the safer centers set up by the DMC. Due to displacement, damage to the houses coupled with livelihood loss, there is a need to provide severely affected families with assistance to repair the damages and procure some of the household items including Non-Food items. The responsibility for repairing damaged houses located in areas prone to landslides will be undertaken by the government.

Also, there is a priority to clean the mud inside the houses when the water recedes, which requires further tools and chemicals to disinfect their kitchens, utensils, and clothes. A total of 69,981 people from 18,946 households were affected from all three

districts. There are presently over 3,500 individuals from one thousand families residing in the secure centers across all three districts. They require urgent access to essential clothing items as their entire possessions are submerged in water and they are unable to clean their garments due to the persistent rainfall. Moreover, they lack alternative clothing to change into.

Operational Strategy

Overall objective of the operation

The aim of this operation is to support 14,750 people from 2,950 families in the three worst-affected districts of Matara, Gampaha, and Galle. The operation will be implemented for a four-month period. The affected people will be supported with essential household items/non-food items, including clothes, multipurpose cash grants assistance to meet the gaps in their basic needs, well cleaning, cleaning-up campaigns, hygiene promotion (WASH), and medical camps and first aid assistance as well as provision of school exercise books and other stationeries.

Operation strategy rationale

The strategy for this operation is fully in line with SLRCS and IFRC policies, procedures, commitments, and mandates. With the support of IFRC, SLRCS seeks to provide immediate support to the most vulnerable households among affected populations in the three targeted districts.

The selection will involve affected community members and be carried out in close coordination with the local authorities. Places of intervention will be decided after the ongoing assessments covering the most affected population in the worst affected districts, Matara, Gampaha, and Galle. The proposed strategy is formulated based on the short-term needs of the affected people and aligned with the government's strategy. The proposed flood response operation will run for the next four months and cover the immediate relief needs.

(A) Multi-purpose cash assistances (MPCA) – Target 9,500 people from 1,900 households:

Based on a rapid needs assessment, it was highlighted that the poor and vulnerable people in all three districts lost their income due to a week-long adverse weather conditions, resulting in a shortage of food in their homes. Many farmers lost their crops, and their farming land was inundated.

A detailed assessment will be conducted prior to the cash distribution to select the most affected households, analyze the evolving situation, monitor the market, and identify priority needs. The assessment team and NDRT, together with CVA focal, have already analyzed the market condition, conducted a feasibility study, and selected the delivery mechanism, which will be bank transfer (Sampath Bank Pvt Ltd). It has been confirmed that the banks are functioning in the affected districts.

The CVA focal closely works with the Cash Working Group to update the current situation of the flood-affected districts and discuss the MPCA intervention. Engagement with CWG will further determine the value of the cash grant based on the minimum expenditure basket (MEB) analysis.

The cash value per household is decided based on the Minimum Expenditure Basket guidance, which was developed by the CWG. SLRCS is active in a cash working group, also co-sharing the group. In the last three previous responses (MDRLK 15, 16, 17), cash was a key response. The MEB per household, LKR 20,000, was developed by CWG last year based on the inflation fluctuation rates from May to Oct 2022, and currently, CWG-Sri Lanka is revising the MEB.

There will be no restrictions on the use of the cash grants received, enabling the families to maintain their dignity by prioritizing the use of the funds based on their specific needs. The delivery mechanism of multi-purpose cash assistances will be a bank account transfer. SLRCS is already engaging in bank transfers and has a financial service provider agreement with one of the commercial banks, which has a wider network in the country. SLRCS has implemented MPCA for 750 households using prior IFRC-DREF funds. SLRCS is also executing another MPCA under the emergency appeal, with a monetary value of LKR 20,000 for more than 18,000 families across the country. SLRCS will ensure that there is no duplication of beneficiaries. Once the cash grant distribution is concluded, post-distribution monitoring will be conducted to evaluate the efficiency of this intervention.

(B) Essential household items – Target 5,000 people from 1,000 households:

The most affected vulnerable people, whose houses are inundated by the floods and displaced to safer locations and neighboring

villages and relative houses, will be targeted. As per the branch assessment, from each district, more than 6,000 families have been displaced due to inclement weather conditions since 7 October 2023. A total of 1,000 families have already been supported with essential household items such as towels, bed sheets, sarongs, Kaplan, and mosquito nets from the existing stock, and the gap will be replenished by the SLRCS from the DREF allocation.

(C) Health – Target 40,000 people through medical camps and first aid activities:

Medical clinics and first aid initiatives will assist the most vulnerable elderly people and those with chronic diseases who are unable to access health care facilities. Along the river's banks, the majority of the population is poor and has lost their means of subsistence; many are unable to provide sustenance for their children. Due to the persistent economic crisis, a significant number of children in the district are afflicted with severe acute malnutrition. Additionally, the MPCA will provide assistance to these families to meet their immediate dietary requirements.

(D) Water, Sanitation, and Hygiene – Target 14,750 people through the distribution of drinking water, well cleaning, and sanitary napkin distribution:

WASH interventions include well cleaning, providing drinking water, distribution of house cleaning kits, community and individual house clean-up campaigns, and hygiene promotion activities. Volunteers will also assist vulnerable households in cleaning their houses and surroundings, as well as support community clean-up activities in removing debris and mud from within the house and compound, mostly in low-lying regions and riverbanks, to prevent dengue mosquito breeding. Volunteers will also give IEC materials to educate the community on how to reuse plastic water bottles to lessen environmental effects. Displaced young girls and women of menstruating age will receive appropriate sanitary materials.

(E) Education – Target 3,800 schoolchildren:

Additionally, due to the houses being flooded, children from affected households lost their school items including books and stationery. Their parents are currently not able to replace these items, and the children need to return to school. A detailed assessment will be conducted to identify the most affected school children who lost their stationery due to the floodwater, and they will be supported with the essential stationery to continue their education.

(F) Dry rations distribution – Target 250 people from 50 households:

Provisions of dry rations will be provided to those who have been impacted by the occurrences of landslides within the districts of Matara and Galle. The individuals are in the safe locations that are overseen by the Divisional Secretary and the Disaster Management Centre (DMC).

SLRCS notes that some harder-hit families may already be receiving assistance in different sectors from the authorities. SLRC will ensure that there will be no duplication of assistance in the same districts. At the end of the operation, SLRCS will organize a lesson-learned workshop to review the operation and identify areas for improvement.

In its responses, SLRCS will ensure that programs under this operation are aligned with its gender commitments as well as with the IFRC minimum standard commitments to gender and diversity in emergency programming. Specific considerations will include the elderly, persons with disabilities, pregnant women, lactating women, women-headed households, migrants, and households with infants or young children.

These groups are more vulnerable to challenges related to access to nutrient-rich food, safe water, and are more susceptible to diseases/infections. SLRCS always focuses on establishing a better community feedback mechanism throughout the operation, to ensure all the voices of the community are heard and accepted. For conducting the activities, SLRCS strategies will include a strong community engagement mechanism to ensure community ownership is built throughout the operation.

Targeting Strategy

Who will be targeted through this operation?

SLRCS will identify the worst-affected people, specifically focusing on families living on the riverbanks in the three targeted districts: Gampaha, Matara, and Galle. The target strategy will assess the damages and losses to their livelihoods and houses due to river waters overflowing, as well as the impact on their health and the education of the affected children through detailed assessments and household surveys. This approach will also ensure that the operations do not conflict with the previous dengue and flood DREF (MDRLK017) in the Matara district. Beneficiary selection will be a community-driven process and will be carried out in close coordination with local authorities.

Floods: Based on the flood needs assessment, 2,950 households (14,750 people as direct beneficiaries) affected by the flood will be targeted in the three districts for multi-purpose cash assistance for 1,900 households (9,500 people), essential household items for 1,000 households (5,000 people), and dry rations for 50 households (250 people), school packs, drinking water bottles, sanitary napkins, wells, and house clean-up activities. A total of 14,750 people will be targeted as direct beneficiaries through the response.

Under the multi-purpose cash assistance, priority will be given to people displaced by floods, landslides, and heavy winds who are living in temporary shelters/evacuation centers, and affected people returning to their homes after the initial stages of the disaster. Specific considerations will include the elderly, persons with disabilities, pregnant and lactating women, women-headed households, and households with infants or young children. These groups are more vulnerable to challenges related to livelihood loss, access to nutrient-rich food and safe water, and are more susceptible to diseases/infections.

The three districts are also targeted under the ongoing emergency appeal operation (MDRLK014 - Complex Emergency). However, there is no overlap between the target groups in the two operations. During the detailed assessment, more information on the most vulnerable groups, such as the elderly, disabled, pregnant/lactating mothers, and women-headed households, will be collected before targeting for assistance.

Explain the selection criteria for the targeted population

Based on the pre-designed criteria that have been customized according to the situation, the severely affected population in the Gampaha, Matara, and Galle districts will be covered by this DREF with estimated female beneficiaries will be higher than males. The government is also helping others who are affected, and moderately affected communities are starting their normal life again and there is no need for further assistance. In its response, SLRCS will ensure that activities under this operation are aligned with its gender commitments as well as with the IFRC minimum standard commitments to gender and diversity in emergency programming.

Total Targeted Population

Women	5,643	Rural	60%
Girls (under 18)	1,880	Urban	40%
Men	5,421	People with disabilities (estimated)	1%
Boys (under 18)	1,806		
Total targeted population	14,750		

Risk and Security Considerations

Please indicate about potential operation risk for this operations and mitigation actions

Risk	Mitigation action
Risk of contracting the dengue virus	This risk will be mitigated by providing self care packs, which consist of mosquito repellents, gloves, and hand sanitizers, to all volunteers working in the field.
Inadequate human resource capacity	National Society will plan in advance the HR requirement, and allocate the required support to the branches NDRT will be mobilized to support the response activities and more volunteers will be mobilized

Limitation to reaching the remote areas	Alternative transport options e.g. Ferry and boat services will be arranged by the branch offices with the support of volunteers
Ongoing southwest monsoon - delaying the implementation of the activities	Pre-planning of activities and better coordination with local authorities for implementation of activities without delay.

Please indicate any security and safety concerns for this operation

The SLRCS security framework will be applicable for the duration of the operation to their staff and volunteers. For personnel under IFRC security's responsibility, existing IFRC country office/ CCD security plans will be applicable. All IFRC and RC/RC staff and volunteers are encouraged to complete the IFRC Stay Safe 2.0 e-learning courses. The National Society enjoys a good level of community acceptance countrywide, with established networks of community-based volunteers.

Planned Intervention



Water, Sanitation And Hygiene

Budget: CHF 51,957

Targeted Persons: 14,750

Indicators

Title	Target
# of people reached by hygiene promotion activities	14,750
# of people supported with sanitary napkins	2,600
# of clean-up and disinfection campaigns at community places/public buildings including people places	45
# of water sources rehabilitated	900
# of people supported with drinking water bottles	9,500

Priority Actions

- 1- Organize 45 clean-up campaigns to support vulnerable households in cleaning their houses and surroundings and stacked places such as drainage and common buildings including schools.
- 2-Cleaning of 900 wells in the flood-affected districts.
- 3-Distribution of sanitary napkins to the schoolgirls and elderly people who are displaced due to the flood.
- 4-Conduct hygiene promotion activities and distribute IEC materials.
- 5-Procure and distribute the 5 (L) drinking water bottles to the family members who were displaced by the flood and landslide from their homes.



Protection, Gender And Inclusion

Budget: CHF 0

Targeted Persons: 14,750

Indicators

Title	Target
# of individuals covered through dignity, access, and protection activities	14,750

Priority Actions

- 1-Ensure Dignity, access, protection, and safety via PGI activities across both responses when engaging with the communities.
- 2-Consider the most vulnerable and disabled children under the provision of education support



Education

Budget: CHF 82,674

Targeted Persons: 3,800

Indicators

Title	Target
# of affected school children received School packs.	3,800

Priority Actions

- 1- Provide 1,900 households' children who lost their school items with 2 packs per family. Through the activity, access to education is ensured by providing necessary school stationaries to continue affected children's education.



Community Engagement And Accountability

Budget: CHF 2,282

Targeted Persons: 14,750

Indicators

Title	Target
# of people informed about the selection process of the beneficiaries	2,950
# of people reached through social media on awareness	14,750
# of community meeting conducted to share the information about the operation	15
# of feedback comments collected, disaggregated by sex, age and disability, including sensitive feedback linked to SEA, fraud, corruption or protection concerns	90

Priority Actions

- 1-Establish Feedback mechanism for receiving and addressing the grievances from communities.
- 2- Social media dengue campaigns.

- 3- Sharing the selection criteria with the community
- 4-Strengthening feedback mechanism (hotline services)



Secretariat Services

Budget: CHF 24,340

Targeted Persons: 1

Indicators

Title	Target
# of person deployed to support the operation	1

Priority Actions

- 1- Deploy surge personnel (Health, WASH, Procurement or Operation/Finance) to support the operation, as per need basis.



National Society Strengthening

Budget: CHF 35,092

Targeted Persons: 100

Indicators

Title	Target
# of rapid and detailed assessment teams deployed at branch level	3
# of communications materials produced (social media, media articles, interviews, etc.)	10
# of monitoring visits conducted at the NHQ and branch level	12
# of volunteers involved in the operation insured	60
# of lessons learned workshop conducted	1

Priority Actions

- 1-Recruit and deploy all local operation-based staff at NHQ and Branch level
- 2-All staff and volunteers are insured, and protection is ensured throughout the operation.
- 3-Conduct an assessment as per the need for the situation and the need analysis
- 4-Conduct monitoring by Branch/ HQ/ IFRC
- 5-Conduct progress review meetings at the NHQ level



Livelihoods And Basic Needs

Budget: CHF 1,217

Targeted Persons: 250

Indicators

Title	Target
# of households provided with dry rations assistance	50

Priority Actions

- 1- Conduct an assessment of the areas where landslides happened
- 2- Procurement of dry-rations as per the standard dry rations list
- 3- Provide people affected by landslides with dry-ration packs



Multi-purpose Cash

Budget: CHF 123,362

Targeted Persons: 9,500

Indicators

Title	Target
# of targeted households provided with cash assistance.	1,900

Priority Actions

- 1- Conduct a detailed assessment, and select the beneficiaries based on the agreed criteria
- 2- Analyze the evolving needs as people get back to their homes and monitor the market functions
- 3- Conduct coordination meetings with the government agents to verify the final list of beneficiaries
- 4- Ensure community feedback mechanism is in place
- 5- Conduct community meetings in order to verify and re-check the selection of the beneficiaries.
- 6- Provide unconditional cash grants to targeted households in the affected areas
- 7- conduct Post Distribution Monitoring.



Health

Budget: CHF 20,083

Targeted Persons: 14,750

Indicators

Title	Target
# of people reached by medical camps and First aid assistance.	14,750

Priority Actions

- 1-Establish 18 medical camps and continuation of 03 first-aid services to provide additional health assistance to affected communities. This will allow more focus on the most vulnerable people such as the elderly who have chronic diseases.



Shelter Housing And Settlements

Budget: CHF 18,683

Targeted Persons: 5,000

Indicators

Title	Target
# of households provided with essential household items assistance	1,000

Priority Actions

1-Procurement and distribution of essential household items including 1,000 bed sheets, towels, Sarang, Caftan, and mosquito nets to the people severely affected by the flood in the districts. These items have already been distributed to the affected people and SLRCS will procure to replenish their current stock.

2-Mosquito nets will be distributed directly to the beneficiaries and SLRCS will go for international procurement in order to ensure the standard of the WHO.

About Support Services

How many staff and volunteers will be involved in this operation. Briefly describe their role.

A total of 60 volunteers (with a combination of males and females) will be involved in this response. The profile will cover WASH and Health (including PSFA), CEA, and PGI sectors. Staff and volunteers from each branch and SLRCS HQ will be engaged as well directly. The operation will be run by a project manager (national staff) with a team comprising a project assistant, field officer, coordinator, finance, driver, etc.

Will surge personnel be deployed? Please provide the role profile needed.

Yes, based on the situation and operational needs surge (Health/Wash/procurement/Operations/Finance) will be requested.

If there is procurement, will it be done by National Society or IFRC?

It is projected that the market in Colombo will be sufficient to supply the required items. However, in order to procure the WHO standard Mosquito nets, SLRCS will go for international procurement only for Mosquito nets. Since the items requested are available and within the threshold of in-country procurement, it will be done by SLRCS following IFRC procurement standards.

How will this operation be monitored?

SLRCS will oversee all operational, implementation, monitoring and evaluation, and reporting aspects of the present operation in the affected areas through its country-wide network of branches and volunteers. IFRC, through its Country Office and CCD in Delhi and APRO in Kuala Lumpur, will provide technical support in program management to ensure the operational objectives are met. Reporting on the operation will be carried out in accordance with the IFRC DREF minimum reporting standards. Regular updates will be issued during the operation's timeframe and a final report within three months of the end of the operation.

Please briefly explain the National Societies communication strategy for this operation

SLRCS communications staff are working in close coordination with the IFRC regional communications team to ensure that the evolving humanitarian needs and SLRCS response are profiled across social media platforms and in the national and international media. A proactive approach will be taken to maintain media outreach and to produce communications materials including press releases, news stories, photos/videos, key messages, and infographics for external promotion by Partner National Societies in their networks.

Budget Overview



DREF OPERATION

MDRLK018 - Sri Lanka Red Cross Society Monsoon Floods 2023 Sri Lanka

Operating Budget

Planned Operations	300,259
Shelter and Basic Household Items	18,683
Livelihoods	1,217
Multi-purpose Cash	123,362
Health	20,083
Water, Sanitation & Hygiene	51,957
Protection, Gender and Inclusion	0
Education	82,674
Migration	0
Risk Reduction, Climate Adaptation and Recovery	0
Community Engagement and Accountability	2,282
Environmental Sustainability	0
Enabling Approaches	59,432
Coordination and Partnerships	4,260
Secretariat Services	24,340
National Society Strengthening	30,832
TOTAL BUDGET	359,690

all amounts in Swiss Francs (CHF)

Contact Information

For further information, specifically related to this operation please contact:

National Society contact: Dr Mahesh Gunsekera, Director General, mahesh.gunasekara@redcross.lk, +94 7003471084

IFRC Appeal Manager: Udaya Kumar Regmi, Head of Country Cluster Delegation, udaya.regmi@ifrc.org, +919667438124

IFRC Project Manager: Meenu Bali, Programme Manager, meenu.bali@ifrc.org, +919971641414

IFRC focal point for the emergency:

Udaya Kumar REGMI, Head of Country Cluster Delegation, udaya.regmi@ifrc.org, +919667438124

Media Contact: Afrhill Rances,, Reginal Communication Manager, afrhill.rances@ifrc.org

[Click here for the reference](#)