



Photo: Magen David Adom in Israel

Appeal: MDRIL004	Country: Israel	Hazard: Other	Type of DREF Response
Crisis Category: Orange	Event Onset: Sudden	DREF Allocation: CHF 999,396	
Glide Number: OT-2023-000197-ISR	People Affected: 9,364,000 people	People Targeted: 10,000 people	
Operation Start Date: 2023-10-14	Operation Timeframe: 1 months	Operation End Date: 2023-11-30	DREF Published: 2023-10-15
Targeted Areas:			

Description of the Event

What happened, where and when?

In the early morning of 7 October 2023, armed groups launched a multi-front (land, air, and sea) operation against Israel. The assault combined gunmen crossing into several Israeli towns targeting various Israeli military installations and nearby settlements with a heavy barrage of rockets fired from Gaza. Rockets have been fired from Gaza towards Israeli villages and cities surrounding and up to 170 km from the border, including the major cities of Jerusalem, Tel Aviv, and Beer-Sheba. On 13 October a rocket was fired to the Galilee (North of Israel). Ongoing rocket launches and fighting has taken place since the armed hostilities began. □ □

The deadliest attack in Israel in decades, (source Israeli Defense Forces – IDF spokesperson) more than 1,300 Israeli and foreign nationals, including women, children, and the elderly, were killed in Israel by members of the armed groups, including 3 Magen David Adom in Israel (MDA) members. According to the Ministry of Health, at least 3,391 people have been injured. □

During the attacks on Israeli communities and military bases, dozens of Israeli captives - including numerous women, children and elderly - are believed to have been taken into Gaza (as of 13 October, as per IDF spokesperson, 97 persons are confirmed to be abducted). □ □

There are also several security incidents registered in the Northern border of Israel (with Lebanon and Syria). There have been reported attacks against military bases and attempts to cross the border by arms barriers, mortar shelling and drone attacks. □

The Israeli Defense Forces have closed roads near Gaza, as well as the Allenby/King Hussein bridge. Restrictions are in place in many other areas within rocket reach. A "state of emergency" in Israel and a "state of war" have officially been declared by the Israeli government, with limitations on public gatherings in all the territory up to 80 km from Gaza, and no schools open until 14 October. □

The communities around Gaza have been evacuated and the inhabitants of Shderot (the largest town in the area, have been offered the opportunity to evacuate). Some communities in the north (very close to the border) have been evacuated as well. Bed-driven patients in the affected communities have been evacuated. □

Hospitals in the north and the south of Israel have been transferred to facilities in the center to free bed capacity. Contingency plans in all the hospitals have been activated and wards moved to underground sheltered facilities.

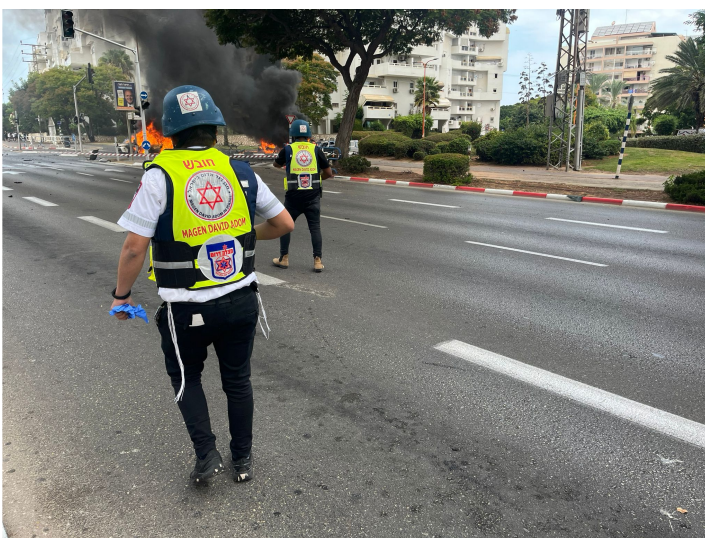


Photo: Magen David Adom in Israel



Photo: Magen David Adom in Israel

Scope and Scale

Since the escalation of hostilities, governmental entities, non-governmental organizations, and volunteers are working collaboratively to address the needs of the affected population. Magen David Adom teams provided treatment to thousands of injured, among them many who were killed, and others in serious, moderate and minor condition. During the first day of the escalation only, MDA responded to 8,000 calls via its emergency number (101). □ □

Magen David Adom helicopters made dozens of medical evacuations; they have evacuated dozens of civilians and soldiers who have been injured in the field and from hospitals in the south to the following hospitals: Sheba, Belinson, Ichilov, Shamir Medical Center (Assaf Harofeh), Hadasa, and Shaarei Zedek in Jerusalem. □ □

□
After receiving primary care in Barzilai Hospital and Soroka Medical Center in the south, dozens of ambulances, mobile intensive care units (MICUs) and Magen David Adom mass evacuation vehicles transferred injured in all stages of severity to different hospitals spread all across Israel. □

□
Magen David Adom blood services staff collected, tested and processed more than 13,000 blood units from civilians who came in and donated blood with the intent to supply blood to all the hospitals who will use it to treat the wounded. □

□
The conflict has had a significant humanitarian impact, including displacement, loss of life, injuries, destruction of infrastructure, restrictions on movement, and challenges in accessing necessities like healthcare, education, and any other basic needs. The Israeli authorities reported that since the beginning of the conflict, 1,300 people have lost their lives and more than 3,391 people have been seriously injured. □ □

□
According to Israeli sources, between 100 and 150 Israelis, including soldiers and civilians, some of whom are women and children, as well as some foreign nationals, have been captured and forcibly taken into Gaza.

Previous Operations

Has a similar event affected the same area(s) in the last 3 years?	No
Did it affect the same population groups?	No
Did the National Society respond?	No
Did the National Society request funding from DREF for that event(s)?	No
If yes, please specify which operations	MDRIL003

Current National Society Actions

Health	With its status as Israel's national organization responsible for emergency pre-hospital medical care and blood services, MDA is providing all of its support in the health sector. Activities being undertaken include treatment and evacuation of victims in the south, centre and north of the country; inter-hospital transfers in coordination with the Ministry of Health; support to the Ministry of Health in the evacuation of bed-driven persons from communities at the border; as well as blood collection and processing.
---------------	--



National Society EOC	MDA activated its Emergency Operations Centre (EOC) since the escalation of hostilities, where it coordinates with domestic actors and the Israeli government on its response. EOCs are also active at the branch level, where regional coordination takes place. MDA exchanged liaison officers with the different agencies, to ensure real time exchange of information.
Activation Of Contingency Plans	MDA has activated its "war scenario" contingency plan. It is currently engaging in contingency planning for any additional escalation of hostilities. The total number of available MDA ambulances are 1,465. Due to the current situation, MDA is staffing an additional 130 ambulances with paid workers 24/7 (on top of regular activities). The remaining available ambulances are being staffed by volunteers. The number of MDA ,field' paid staff involved in the operation is approximately 2,500 and around 10,000 volunteers.

IFRC Network Actions Related To The Current Event

Secretariat	The International Federation of Red Cross and Red Crescent Societies (IFRC) does not have presence in Israel. Therefore, the IFRC Regional Office for Europe (ROE) is supporting MDA in this operation. IFRC ROE has technical capacities to support across sectoral areas, including health and mental health and psychosocial support (MHPSS), Protection, Gender and Inclusion (PGI), operations, communications, and Community Engagement and Accountability (CEA). IFRC ROE remains available to support MDA as requested with either technical or coordination support.
Participating National Societies	MDA has received offers of support from numerous Partner National Societies (PNS), including the German Red Cross, American Red Cross, Canadian Red Cross, Japanese Red Cross, French Red Cross, Czech Red Cross, Italian Red Cross, Netherlands Red Cross, Austrian Red Cross, Philippines Red Cross, and Mexican Red Cross. At this time, no support is requested, however, MDA appreciates the offers and will contact PNS should support be necessary.

ICRC Actions Related To The Current Event

Through its permanent presence in Israel and the Occupied Territories (ILOT) since 1967, the International Committee of the Red Cross (ICRC) has been working to alleviate the suffering of people impacted by conflict. The ICRC has been partnering with the MDA and last month has signed a 4 year partnership framework agreement to continue supporting Municipal community contingency planning for emergencies, further strengthening the National Disaster Response Team (NDRT) network, building the next humanitarian leaders in the National Society (NS), promoting International Humanitarian Law (IHL), and supporting its contribution to Movement policy and operations.

Other Actors Actions Related To The Current Event

Government has requested international assistance	Yes
--	-----



<p>National authorities</p>	<p>The Government of Israel has requested limited technical and in-kind assistance from the international community in the area of identification of the deceased. It is providing support to displaced persons for the majority of their needs, including shelter, food and non-food items, hospital services, psychosocial support, and will support for any needs for resettlement. National, regional, and municipal authorities are all mobilized to support the ongoing needs in both short and long term, and depending on the evolution of the situation.</p> <ul style="list-style-type: none"> • Emergency government has been created as of 11 October. • Local authorities are in charge of sheltering the vulnerable population outside of the endangered communities. • Hospital care is managed by the national authorities. • Coordination cells are active at the local level, district level, and at the national level. MDA is present at all coordination cells and has a representative at the Ministry of Health. • Government opened an international roster for healthcare professionals. • Government is considering financial support to the affected population.
<p>UN or other actors</p>	<p>No response information is available on other actors' activities in Israel.</p>

Are there major coordination mechanisms in place?

Overall coordination of the response is managed by the Government of Israel. MDA has activated its EOC and is coordinating with other domestic response agencies. MDA representatives are present at and coordinating with the Israeli government at multiple levels, including local, regional and national level in various ministries, including the Ministry of Health, Home Front Command, and national police. There are no cluster coordination mechanisms active. MDA will participate in any coordination mechanisms which are established by the response.

At the moment, "war scenario" contingency plan has been activated.

In accordance with Movement coordination practice, MDA convened a Mini-Summit to guide the Movement's support and response. Accordingly, MDA assumes the Convener function, ICRC the Co-convener function, with full collaboration and support of the IFRC.



Needs (Gaps) Identified



Health

As a result of the escalation of hostilities, thousands of people were and continue to be in need of first aid, immediate medical attention, including trauma management, psychosocial first aid, and transportation to hospitals. There is a need for a mass response in several incidents simultaneously along with the need to support hospitals across the country with blood components for treating casualties. Seven communities have been severely affected in the south of Israel and are considered particularly vulnerable; amongst these communities there are different vulnerabilities. All people who are living near the border areas are considered at risk, while other areas of the country are also at risk of rocket attacks and other forms of violence, leading to physical injuries. The need for psychosocial support is enormous, both in the immediate and long term. MDA will consider in the longer term whether additional support to psychosocial support capacities is required. □

To increase the Emergency Medical Services (EMS) response capacities to the population affected by the escalation of hostilities, MDA's entire ambulance fleet has been mobilized and are being manned 24/7. Staff and volunteers of MDA are manning ambulances in shifts or on stand-by, receiving emergency calls in MDA operation centres, and collecting and distributing blood and blood components to hospitals. An additional 130 ambulances have been mobilized. With additional ambulances, there is a need for supplemental fuel and maintenance, as well as the additional teams required for the shifts.

Any identified gaps/limitations in the assessment

Operational Strategy

Overall objective of the operation

The overall objective of the operation is to support the response to the immediate health needs of the population affected by the complex emergency by contributing to operational and maintenance costs of MDA ambulance services.

Operation strategy rationale

With its national mandate for the provision of emergency medical services and blood services, MDA activated its response system to ensure response capacity to any potential events occurring at community level all over the country, including the possibility of multiple events occurring simultaneously. During the days of escalation, MDA is providing emergency medical services to the population affected by the ground attacks and rocket attacks by operating additional ambulances 24/7. It ensures rapid and appropriate emergency medical care and psychosocial first aid in case of injury due to the current escalation, while maintaining appropriate response to routine calls and inter-hospital transfers as necessary for either security or care reasons. The ambulances are covering a wide geographic area and a large portion of the population, with covering millions of people in their catchment areas. The activation of more ambulances and teams increased the fuel consumption to be able to reach and transport patients, while requires additional support for the personnel manning the ambulances.



Targeting Strategy

Who will be targeted through this operation?

The target of this operation is approximately 10,000 people, representing the patients to be treated by the additional MDA ambulance services.

Explain the selection criteria for the targeted population

MDA supports the affected population all over the country, in all the affected areas and hospitals nationwide. Particular focus is given to the vulnerable population living near the borders with Gaza and Lebanon, the seven communities in the south of Israel heavily impacted by armed conflict, and the evacuated and internally displaced persons.

Total Targeted Population

Women:	5,010	Rural %	Urban %
Girls (under 18):	-	%	%
Men:	4,990	People with disabilities (estimated %)	
Boys (under 18):	-	%	
Total targeted population:	10,000		

Risk and security considerations

Please indicate about potential operational risk for this operations and mitigation actions

Risk	Mitigation action
Significant scale up in armed hostilities including fighting on Israeli territory and increase in aerial bombardments, and/or evolution of armed hostilities to include multiple fronts and borders.	MDA has activated its "war contingency" scenario and is currently engaging in contingency planning for additional escalations. It is prepositioning ambulances in important parts of the country and mitigating possible civilian impact by moving patients to more secure areas as necessary. MDA personnel are operating using helmets and flak jackets, armoured ambulances are operated at the highest risk areas, operations centres and blood services are working from bomb shelters. Specific security protocols are in place.

Please indicate any security and safety concerns for this operation

The situation at the moment is both dangerous and volatile. MDA volunteers and staff are operating in an insecure environment in many areas of the country, with high risks to themselves. Sadly, three MDA members have been confirmed to have lost their lives in the line of duty since the start of the escalation of hostilities, with another two MDA members seriously injured and two with minor injuries. One MDA volunteer is currently unaccounted for. □ □ A rocket landed near MDA station in Shderot, resulting in two ambulances becoming non-operational. □ □ In recent days, several security incidents were registered in the Northern border (with Lebanon and Syria), raising the possibility of additional hostilities. □




□

Further escalation of the attacks, while rockets are being fired and ground hostilities are involved, may decrease the accesses of MDA teams to victims of violence, limiting the response capacities.



Planned Intervention

	Health	Budget	CHF 999,396
		Targeted Persons	10000
Indicators		Target	
Number of additional ambulance cars in operation		130	
Priority Actions:		<p>Scaling up the ambulance services by deploying additional 130 ambulances with two team members, each for two extra shifts on a daily basis, across the country. Covering staff costs, as well as, fuel and maintenance costs for the additional ambulance services.</p> <p>Health provision services are provided in line with the Israeli Ministry of Health standards. MDA medical treatment protocols are approved by the Israeli Ministry of Health.</p>	

About Support Services

How many staff and volunteers will be involved in this operation. Briefly describe their role.

Some 26,000 MDA volunteers and staff members have been involved in the response to the emergency situation in the affected areas and over 1,000 ambulances, responding to emergency incidents related to the current escalation.

If there is procurement, will it be done by National Society or IFRC?

N/A

How will this operation be monitored?

The provision of the financial support will be utilized by MDA to run additional ambulances. This will be monitored by MDA with regular reporting provided to the IFRC Regional Office for Europe.

Please briefly explain the National Societies communication strategy for this operation.

MDA is continuously engaged with ICRC, IFRC, and other Movement partners on communications activities, responding to requests for media interviews and information materials. IFRC will continue to support MDA as requested with preparation of communication materials and liaising with ICRC and Movement partners to develop key messages, including through its Communications Manager in the Regional Office for Europe.



Budget Overview



DREF OPERATION

MDRIL004 - Magen David Adom in Israel Israel: Complex Emergency

Operating Budget

Planned Operations	999,396
Shelter and Basic Household Items	0
Livelihoods	0
Multi-purpose Cash	0
Health	999,396
Water, Sanitation & Hygiene	0
Protection, Gender and Inclusion	0
Education	0
Migration	0
Risk Reduction, Climate Adaptation and Recovery	0
Community Engagement and Accountability	0
Environmental Sustainability	0
Enabling Approaches	0
Coordination and Partnerships	0
Secretariat Services	0
National Society Strengthening	0
TOTAL BUDGET	999,396

all amounts in Swiss Francs (CHF)



Contact Information

For further information, specifically related to this operation please contact:

- **National Society contact:**

Chaim Rafalowski, Disaster Management and International Coordinator, haimr@mda.org.il

- **IFRC Appeal Manager:** Agnes Rajacic, Senior DREF Officer, agnes.rajacic@ifrc.org

- **IFRC Project Manager:** Agnes Rajacic, Senior DREF Officer, agnes.rajacic@ifrc.org

- **IFRC focal point for the emergency:**

Jennifer Vibert, Operations Coordination Manager, IFRC Regional Office for Europe, jennifer.vibert@ifrc.org

- **Media Contact:** Corrie Butler, Communications Manager, IFRC Regional Office for Europe, corrie.butler@ifrc.org

[Click here for the reference](#)

