



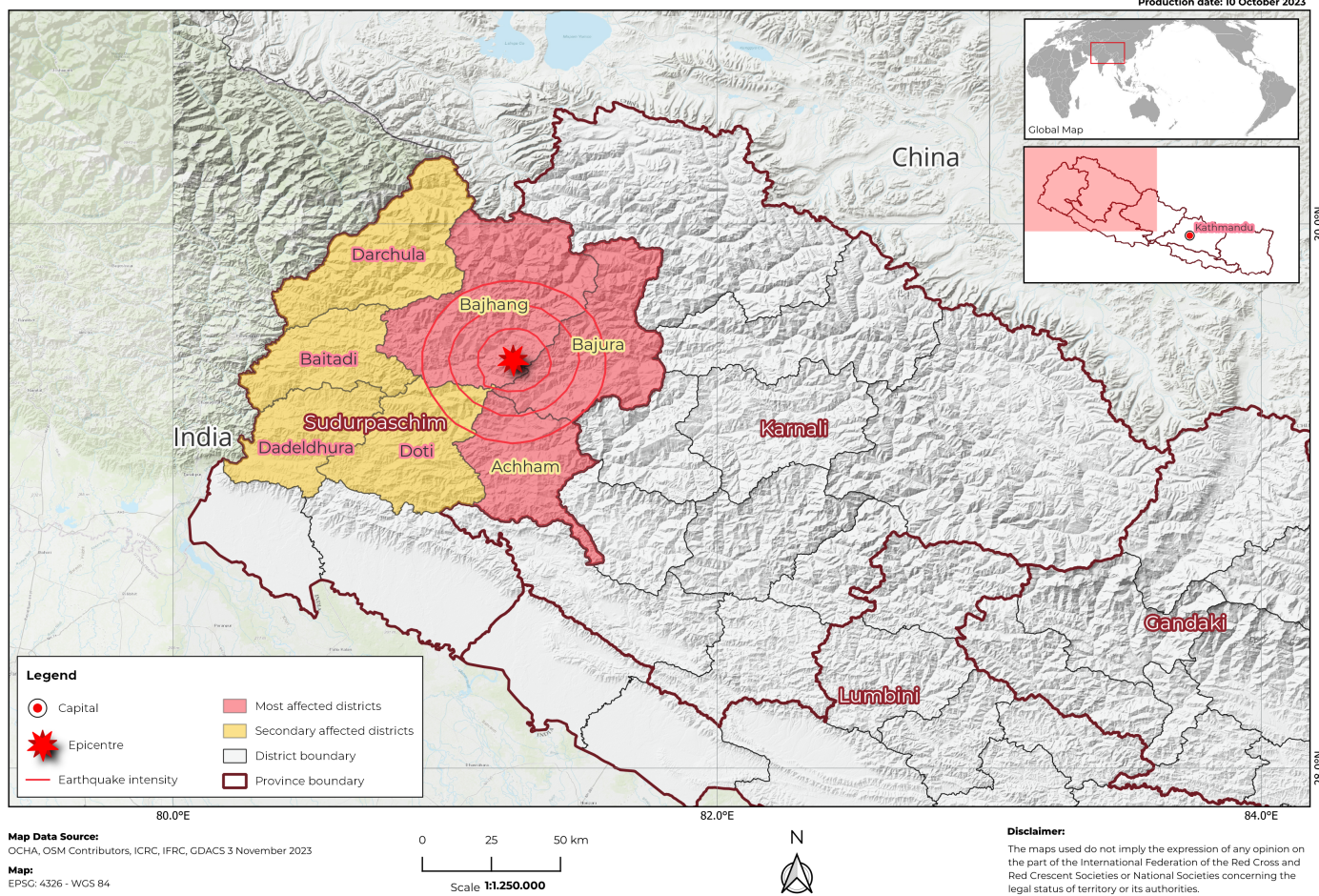
A house destroyed by the earthquake. (Photo: NRCS)

Appeal: MDRNP015	Country: Nepal	Hazard: Earthquake	Type of DREF Response
Crisis Category: Yellow	Event Onset: Sudden	DREF Allocation: CHF 172,176	
Glide Number: EQ-2023-000182-NPL	People Affected: 36,250 people	People Targeted: 7,500 people	
Operation Start Date: 2023-10-12	Operation Timeframe: 6 months	Operation End Date: 2024-04-30	DREF Published: 2023-10-13
Targeted Areas:	Sudurpashchim		

Description of the Event

+ IFRC DREF - Nepal Earthquake October 2023

Production date: 10 October 2023



Map highlighting the targeted areas of the operation. (Map: IM/IFRC)

What happened, where and when?

A magnitude of 5.3 earthquake hit far western Nepal on 3 October 2023 at 14.40 pm and strong aftershocks occurred at regular intervals during the day which has increased fear among local people. The epicenter of the earthquake was Bajhang district of the Sudurpaschim Province and the tremors were felt in six neighboring districts (Bajura, Achham, Doti, Baitadi, Darchula and Dadeldhura). The continuous aftershocks have forced people to leave houses and live in open spaces. On the 7 October, a 5.3 Richter scale aftershock was felt which created constant fear in the affected people. As of 8 October 2023, 36,250 people of 7,250 families are affected where, 1,567 houses fully destroyed and 5,601 house partially destroyed. Due to the extreme remoteness of the affected areas, the impact of the earthquake is yet to be completely understood. NRCS has already mobilized ERT members who are in the field collecting data and the impact will be clear in the coming days.

Photo 1 and 2: Affected people from Bajhang District receiving relief items including emergency shelter items and dignity kits. (Photo: NRCS)





Photo 1



Photo 2

Scope and Scale

The earthquake and aftershocks have damaged individual houses, schools, institutional buildings, while 23 people were injured with one person declared dead. The damage is more significant in Bajura district followed by Bajhang and Achham districts. Given the remoteness of the earthquake-affected districts and settlements, overall understanding of the extent of the damage is only happening gradually; there are still some data discrepancies between various actors which is being addressed through close coordination with authorities at all levels. According to volunteers on the ground, the majority of impacted households live in open areas due to the damage to their homes and the fear of aftershocks. With the approaching winter season, the NRCS is increasing its distribution of non-food items/household items while also planning for some transitional shelter solutions for the most vulnerable households. Needs highlighted in local report are of shelter, basic food, psychosocial support to children and adolescents, protection needs in temporary shelters, WASH and hygiene.

Previous Operations

Has a similar event affected the same area(s) in the last 3 years?	Yes
Did it affect the same population groups?	Yes
Did the National Society respond?	Yes
Did the National Society request funding from DREF for that event(s)?	Yes
If yes, please specify which operations	MDRNP014

If you have answered yes to all questions above, justify why the use of DREF for a recurrent event, or how this event should not be considered recurrent

The epicentre of the Earthquake in November 2022 was in Doti district with affect in Achham, Bajhang and Bajura districts. The earthquake has damaged the physical properties however the human casualty is less compared to last year earthquake. The IFRC and its members responded to the situation through DREF and other dedicated emergency funds. In 2023, the epicentre is in Bajhang district with significant affect and damage in Bajhang,



Bajura and Achham districts. Also, the intensity of the damage is different compared to last year (more houses and school are damaged and less fatalities).

Lessons learned

The reviews and lessons learned events of the country's previous three DREF operations have highlighted that the main successes of operations include (1) increased use of cash and voucher assistance (CVA) across sectors, (2) distribution of specific relief items rather than kits, and (3) coordination with municipalities and wards in line with the country's Federal system (4) use of community engagement and accountability (CEA) approaches and tools. At the same time, three main challenges faced includes (1) delay in NRCS staff recruitment, (2) delay in reporting and timely tracking of people reached, and (3) challenge in ensuring feedback mechanisms are available for affected communities.

The proposed plan considers the above by adopting mostly CVA modality (considering the overall IFRC-Wide response), focusing on emergency shelter, transitional shelter covering three shelter items most appreciated by community members (tarpaulins, blankets and mattresses). To meet the basic needs of the community, multi-purpose cash grant is planned. Additionally, to address protection needs, dignity kits are planned to distribute which are also appreciated as per previous post distribution monitoring (PDM) reports. Learning from the past, all NRCS technical positions will now be based in the district chapters, rather than as a "field team" deployed by the headquarters (HQ). This approach is expected to enhance data tracking and reporting, as well as ensure good CEA.

Current National Society Actions

National Society EOC	The EOC in NRCS headquarters is activated and is actively coordinating with the District Chapters and other stakeholder for information collection, dissemination, etc.
Shelter, Housing And Settlements	As of 8 October 2023, NRCS distributed 225 tarpaulins, 215 blankets, eight sets of NFRI have been distributed in the areas. More items are being dispatched from prepositioned stocks.
Health	First Aid service provided to the injured people in the affected areas. The PSS trained NRCS volunteers are providing PSS services in the affected communities.
Water, Sanitation And Hygiene	As of 8 October, 50 sets of hygiene kits have been distributed together with ongoing promotional activities.
Protection, Gender And Inclusion	NRCS distributed 100 sets of dignity kits, kisori kits and solar lamps from prepositioned stocks in coordination with UNFPA.
Community Engagement And Accountability	NRCS hotline 1130 in the headquarters is active.
National Society Readiness	The Emergency Response Plan (multi-hazards) was followed. The NRCS Emergency Operation Centre (EOC) has also been activated and regularly collecting information through regular coordination with district chapters. NRCS is also attending in different meetings with Government and shelter cluster. NRCS volunteers and staff have also been mobilized for prompt response. NRCS manages a network of national and regional warehouses across the country with prepositioned relief items that have been dispatched to the affected



	areas. Every district chapter in the country maintains a minimum stock for 50 families.
Assessment	NRCS district chapters in coordination with the local authorities has conducted Initial Rapid Assessment (IRA) in three district Achham, Bajura and Bajhang. The IRA has been compiled and coordination is being done for mobilizing volunteers for detailed assessment. Two Emergency Response Team (ERT) are deployed in Bajhang and Bajura for the IRA.
Coordination	NRCS is coordinating with national emergency operating centre (NEOC), local government, District Disaster Management Committee (DDMC), national clusters, International Federation of Red Cross and Red Crescent Societies (IFRC) and its in-country members for immediate response and further assistance. Ongoing coordination with the HCT including shelter cluster coordination is also ensured.

IFRC Network Actions Related To The Current Event

Secretariat	The IFRC Country Delegation has been supporting NRCS to formulate the overall response strategy where all in-country IFRC members were invited to contribute. Four intensive coordination meetings were held where an overall plan and budget was agreed with key roles and responsibilities (IFRC mostly focusing on procurement and CEA while American RC, British RC, Danish RC and Swiss RC will support MPC, transitional shelter and PSS under a shared engagement modality). Based on the overall plan, the IFRC team supported NRCS to prepare the DREF application. Additionally, IFRC Country Delegation supported NRCS to produce situation reports and finalize three situation reports in the GO Platform to date.
Participating National Societies	The IFRC/American Red Cross team in Nepal has been supporting a disaster risk reduction (DRR) initiative in the area for three years and is actively contributing to initial efforts. The IFRC/American Red Cross will activate their quick action fund to support the immediate needs of the people in the affected areas. Furthermore, the IFRC/British Red Cross, IFRC/Danish Red and IFRC/Swiss Red Cross are proving funding support for response through their dedicated emergency funding. Danish RC is also considering providing technical support in the field of PSS.

Other Actors Actions Related To The Current Event

Government has requested international assistance	No
National authorities	There was a meeting in the Prime Minister's office with the Council of Ministers on Thursday, 5 October 2023, chaired by the Prime Minister himself. The PM directed the coordination of all three levels to create a unified programme for providing relief, reconstruction and rehabilitation to the earthquake affected people. Further, the PM together with the members of his cabinet and NDR-RMA chief visited Bajhang District to inspect the damage of the earthquake. At local and provincial level authorities are holding meeting at various levels where the Red Cross is actively participating.



UN or other actors	UNHCT mechanism is active and coordinating with various clusters. UNFPA is providing dignity kits, kishori kit, reproductive health kits and solar lamps in the affected communities through NRCS.
---------------------------	--

Are there major coordination mechanisms in place?

IFRC co-chairs the shelter cluster in coordination with NRCS and the coordination with the Shelter cluster is established and ongoing. As per the cluster system in place in the country, it is led by the Department of Urban Development and Building Construction (DUDBC) under the Ministry of Urban Development (MoUD). NRCS organized a virtual meeting on 4 October 2023 to build common understanding on the shelter strategy and to avoid activity duplication among different shelter actors. IFRC Country Delegation also liaised with the UN Resident Coordinator office and two situation reports/bulletin were shared with the wider humanitarian community in the country. In addition, NRCS together with the IFRC is coordinating with the various line agencies of the Ministry of Home Affairs including the NEOC and National Disaster Risk Reduction and Management Authority (NDRRMA). Also, NRCS is coordinating with the Government Agencies at provincial and local levels to provide relief support in the affected areas.



Needs (Gaps) Identified



Protection, Gender And Inclusion

As per the situation reports, the affected people have increased protection needs focused on safe shelters for women and children, psychosocial support to children and adolescents, assistive devices to person with disability. People displaced from their residences are compelled to remain in open spaces. In general, the disaster amplifies the vulnerability of vulnerable groups staying in the community. In such public areas, as people will be bound to stay in close proximity, there is an immediate need of providing PSS and awareness-raising messages on Sexual and gender-based violence (SGBV) prevention and promoting referral pathways among the affected population, in particular children and women. Similarly, as a large number of households have been displaced and affected, special care and attention towards children, vulnerable women (pregnant and lactating), people with disability and those with chronic illness as well as the elderly is required by looking at their vulnerability.

As per the recent data, more than half of the affected population is made up of women and adolescent girls, who are staying in open spaces in tents. This shows that there is an immediate need to ensure the menstrual hygiene and dignity of women and children through the distribution of dignity kits.



Shelter Cluster Coordination

Coordination with Shelter Cluster member agencies is one of the NRCS and IFRC's regular activities at the country level, as part of the wider Humanitarian Country Team (HCT) and under the leadership of the Ministry of Urban Development (MoUD). Initial activation began on 4 October, and coordination will be maintained throughout the operation, particularly in relation to transitional shelter. At the provincial level, the shelter cluster coordination structure in Sudurpaschim Province, which includes the three most affected districts, will be supported as needed to better identify gaps and needs and share available technical expertise.



Community Engagement And Accountability

When engaging with communities, it is critical to ensure that information is not only broadcasted in the communities, but that response teams also set aside time to listen to the needs and interests of affected communities, especially those who are most marginalized and least likely to have a public voice. A process must be in place to ensure that information from communities is not only listened to, but also acted on, by providing various mechanisms to listen to and respond to those voices. During a disaster, it focuses on a participatory response mechanism, supporting the community in recognizing needs, identifying beneficiaries, and planning implementation.



Shelter Housing And Settlements



According to NRCS data, the earthquake has damaged 1,577 houses fully and 5,621 houses partially in seven districts. Due to the impact on their houses and regular aftershocks, the affected families are living outside their homes. Winter has almost arrived, and the lowering temperature in these hilly regions have added to the difficulties/ challenges faced by the displaced families. Considering the situation, there is an urgent need to meet basic, safe and inclusive shelter and settlement needs of the affected people through temporary and transitional shelters also including immediate tarpaulins, blankets and mattress needs. In addition, household items and warm clothes are also needed for the affected families, especially those who are living outside their homes.

There is a need of transitional shelter for the families whose houses are fully destroyed. The transitional shelter is most required to provide safety for the most vulnerable categories of family members, children, pregnant and lactating women, people with disability, elderly people and people with chronic illnesses. The transitional shelter will enhance the safety, dignity and protection of life. Similarly, the safe shelter construction awareness and message dissemination to the people is necessary. On the basis of the assessment data and prior learnings, 21 per cent of total needs among affected houses will be prioritized based on criteria of vulnerabilities among fully and partially damaged houses.



The affected districts are already vulnerable with low immunization coverage, maternal and child health indicators and a high prevalence of malnutrition cases among children under the age of five. The total immunization coverage of Accham, Bajhang and Bajura is 90, 89 and 76 per cent respectively (DoHS Annual Report 2077/2078). It is assumed that the earthquake will increase health risks in affected communities.

Based on this analysis, pregnant women among the affected population and need immediate access to health care services. Likewise, the current situation in the affected area may lead to situational and prolonged effect on the affected population specifically for children and adolescent female etc. mental health and psychosocial aspects. The displaced population immediately need psychosocial support, which is frequently undermined during response.

Similarly, staying in close settings with limited WASH facilities post disaster fosters communicable diseases, the majority of which are water-borne. Also, aftershocks from the earthquake may cause further injury, and referral may be required in any case. The health needs of displaced families are the same regardless of whether the house is partially or fully damaged; the gap in access to health services for people with chronic diseases condition, children under the age of five, pregnant and lactating mothers is the same for all type of households.



WASH is one of the key areas that is usually impacted by disasters. While there is currently very little assessment data on WASH specific damage available, in such disaster situations, WASH facilities and services are likely to have been damaged or became dysfunctional, directly impacting the health of household members, in particular those most vulnerable to unhygienic practices and water-borne diseases. Although the country has made great progress in recent years in terms of access to water and sanitation, remote areas such as those impacted by this disaster continue to lag behind. In this case, the earthquake has severely compromised WASH infrastructure and services for affected families the seven districts.

It is also reported that all displaced families are living in temporarily shelter with limited access to safe water,



user friendly sanitation and hygiene (including menstrual hygiene), which could lead to an increase in other health-related risks if not addressed timely. To address the minimum WASH needs in emergencies, it is necessary to support the construction/installation of safe water supply facilities, user friendly latrines with hand washing facilities, and menstrual hygiene management facilities, as well as conducting hygiene promotion activities throughout the affected catchment.

Any identified gaps/limitations in the assessment

Operational Strategy

Overall objective of the operation

The overall objective of the NRCS response operation with IFRC-wide support is to address the immediate needs of an estimated 7,500 people which is 21 per cent of the people affected by the earthquake as of 9 October 2023, focusing on the three most impacted districts of Achham, Bajhang and Bajura. Within the IFRC-wide support, the objective of the DREF operation is to support affected families with emergency shelter items, risk communication and community engagement and accountability as well as protection interventions for an initial period of six months.

Operation strategy rationale

OVERALL APPROACH

NRCS has designed an overall response strategy with support of the IFRC Network in country, using the available in country capacities and funds and learning from the EQ response intervention of 2022. Under the overall agreed framework, the operation envisages four major components. First the district chapters will support 1,500 families with emergency shelter items (tarpaulin, blankets, mattresses and ropes), dignity kits and hygiene kits which are already in stock and will be replenished by this DREF Operation. Second, 600 most vulnerable families will be supported with multi-purpose cash with funding from IFRC/American Red Cross, IFRC/Danish Red Cross and IFRC/Swiss Red Cross. Third, 250 most vulnerable families will be supported with transitional shelter inclusive of toilet and water tank through cash modality and supported by IFRC/British, IFRC/Danish and IFRC/Swiss. Forth, the IFRC/Danish Red Cross will support the MHPSS and referral services. Across these four components the DREF operation will also support CEA and quality programming through integrated PDM and review process.

SECTOR-WISE APPROACHES

Shelter, Housing and Settlements:

The emergency shelter items distribution strategy are planned based on the level of destruction of houses also considering approaching winter. Each household with fully destroyed houses will be provided with two blankets, two tarpaulins and two mattresses. Each household with partially destroyed house will be provided with one blanket and two tarpaulins. Beyond the emergency shelter support, 250 most vulnerable households among the ones having fully destroyed house will be supported to build a transitional shelter in line with the SPHERE Standards and taking into consideration the technical learning from 2022 experience. The transitional shelter support will be provided through CVA. The design of such transitional shelter will be replicated from Doti EQ response 2022. The emergency shelter items will be supported through IFRC DREF and the transitional shelter will be supported by IFRC/British Danish and Swiss Red Cross.

HEATH:



Health sectoral activities mostly target to limit and prevent possible diseases post-earthquake. As per the Nepal Demographic Health Survey (NDHS) 2016 and Nepal Health Facility Survey (NFHS) report 2021, the affected districts have poor health indicators and limited skilled human resources. Hence, the response approach includes volunteer mobilization for health promotion as well as prevention and control of diseases. The mobilized volunteers will conduct ECV and other health promotional activities closely with the Female Community Health Volunteers (FCHVs) to provide home based health promotional activities, including mental health and psychosocial support (MHPSS). The health actions will primarily target the affected vulnerable population- pregnant mothers and people with underlying health conditions requiring emergency referral, pre-hospital care services, etc. The health promotion activity is supported by the IFRC DREF and MHPSS will be supported by IFRC/Danish Red Cross.

WASH:

Considering the nature of dwelling, damage and intensity of tremors, WASH is one of the key components that must be timely addressed in the emergency context. This helps to avoid the unwanted disaster caused by a lack of safe water, user friendly latrines, and hygiene practices. The most affected 250 households will be supported for toilet construction, hand washing station and water storage tank through cash and voucher assistance supported by the IFRC/American Red Cross, IFRC/British Red Cross and IFRC/Danish Red Cross. In addition, hygiene promotion activities will be conducted in the affected areas which will be supported by the IFRC DREF.

PGI:

The first objective of the PGI sector will be to ensure that Shelter, CVA and WASH interventions are targeting the most vulnerable among affected households, in particular people with disabilities, pregnant/lactating women, infants and elderly. PGI will be considered while conducting assessments, through gathering sex and age disaggregated data (SADD), analysis of who is being reached and who is missing out, and constant reporting on protection issues for children, risks of gender-based violence and sector-specific safety concerns to the EOC by all team members and volunteers. For the stand-alone approaches, 200 women (compelled to stay in the open space for long) and adolescent girls from fully and partially destroyed houses are targeted for "dignity kit" support. The Gender Equality and Social Inclusion (GESI) department of NRCS will provide technical support to the respective sectoral leads as well as district chapters in ensuring that the minimum standard commitments to PGI in emergency programming (published by IFRC and endorsed by NRCS) are applied throughout planning and implementation of response activities. As part of the PGI, the operation will provide transportation support for referral cases such as injured, pregnant and lactating mother, children, people with disability, senior citizens, and chronic disease, etc. This will be supported by the IFRC/Danish Red Cross. Lastly, the operation will provide assistive devices to people with disability from 250 fully affected households. This will be supported by the IFRC DREF. This support will be provided based upon the disability identity card issued by the local government. In addition, staff and volunteers will have to sign the anti-harassment and child protection Code of Conduct before their deployment. A child protection analysis will be developed at the onset of the operation.

CEA:

As per the response strategy, coordination will be done with different sectors for integration within sectorial activities. A variety of communication channels and methods will be used during the response, blending face to face communication and available media channels. As per need, the required information will be adapted and developed. The key messages will be shared depending on context such as communication channel, timing, location, likely audience reached etc. Communities (both targeted and non-targeted) will have the opportunity to ask questions, make complaints and appeal for their inclusion in distributions and other activities throughout the process. Furthermore, the district chapters and sub-chapters will be readily available to hear out and address issues of the community. NRCS will maintain a register at District Chapter and headquarters level to ensure the proper documentation of the feedback and respond. All activities conducted will be carried out with the knowledge of the local government and willingness of the community, ensuring their engagement as per relevant guidelines of the national society to ensure transparency and accountability towards the community, government, partners and stakeholders.

To identify the exact needs of the communities, detail assessment will be done with the participation of community people. Community feedback mechanism set up by NRCS and will be enhanced through this DREF operation with support and coordination from IFRC. The Humanitarian Values and Communication Department of NRCS is



responsible for the outcomes of the PDM feedback/queries/complaints received through the feedback mechanism (kobo feedback collection form, via hotline 1130 and social media access) integrated with PMER-IM. The CEA approach will help prevent and address misinformation and rumors especially in relation to the distribution of relief items and cash assistance through the development of appropriate feedback systems.

Targeting Strategy

Who will be targeted through this operation?

At the time of planning, NRCS is considering covering 21 per cent of estimated affected population, which corresponds to its overall capacity in the country as well as the expected support coming from other actors, including Government at all levels as well as humanitarian actors who are initiating early interventions. Strong targeting criteria will be developed and executed in a participatory way with local public authority. NRCS will ensure that the relief efforts align with government standards and the actual needs of the affected population. NRCS will also apply gender and diversity sensitive analysis in recipient selection by targeting women-headed households, pregnant and lactating women, single women, people with disabilities, elderly people, children, SGBV survivor and displaced people.

Explain the selection criteria for the targeted population

The selection criteria for targeted population are:

1. Families whose houses are fully and partially damaged by earthquake.
2. Households headed by children below 18 years and elderly above 65 years of age.
3. Households headed by women and single women.
4. Death of an earning member of the family due to earthquake.
5. Households comprising of pregnant and lactating women, people with disability and Chronic illness
6. SGBV survivors and community people from low income/displaced families.
7. Migrant/stateless people who are not able to access other support due to legal or social issues

Total Targeted Population

Women:	2,475	Rural %	Urban %
Girls (under 18):	1,350	%	%
Men:	2,213	People with disabilities (estimated %)	
Boys (under 18):	1,462	2.20 %	
Total targeted population:	7,500		

Risk and security considerations

Please indicate about potential operational risk for this operations and mitigation actions

Risk	Mitigation action
Delay implementation due to festival season in Nepal and multiple international holidays.	Expedite the distribution process by increasing number of volunteers before the festival start.
Market price fluctuation for purchase of construction materials.	Cash and voucher assistance implementation and joint work with local government to monitor market condition.
Remoteness for transportation	



Coordinate with security forces and private sectors for transporting and mobilize local volunteers or community members.

Please indicate any security and safety concerns for this operation

The National Society's security framework will be applicable for the duration of the operation to their staff and volunteers. For personnel under IFRC security's responsibility existing IFRC country security plans will be applicable. All IFRC must, and RC/RC staff and volunteers are encouraged, to complete the IFRC Stay Safe 2.0 e-learning courses.

Enabling safe and secure programme delivery is a priority for IFRC and a standard security framework as well as a country security plan is in place which applies to all IFRC deployed personnel. The National Society enjoys a good level of community acceptance countrywide, with established networks of community-based volunteers. There is recognition of and respect for the RC emblem and understanding of the activities carried out by the Movement. Regular contact is maintained with local security networks. IFRC country office also participates in a range of stakeholder meetings in which safety and security matters are considered and discussed, including Humanitarian Country Team (HCT) meetings convened by the UNRC office.


An IFRC country security team is in place and the general safety and security situation in country is constantly monitored. The security officer disseminates Security Advisories, including any necessary temporary restrictions when appropriate. Safety and Security alerts are also sent via SMS messages. All new and visiting international personnel are provided with a security welcome pack and must attend a security briefing within 24 hours of arrival in-country.

Field movement monitoring is in place, with field travel monitored closely through radio contact and phone communications. The security team has local networks in the areas of operation and is ready to put in place security contingency plans if necessary. All teams have access to first aid kits, hard copy road map with alternative routes, contingency supplies of water, food and funds to enable them to be self-sufficient in the event they become stranded. Finally, it is noted that when military and/or other security actors are present in the same humanitarian space, the guidance in the Principles and Rules for Red Cross and Red Crescent Humanitarian Assistance 2013 Section 6 – Relations with Public Authorities: Civil-Military Coordination and the IFRC Stay Safe – Guide to a Safer Mission will be applied. Operations and programme managers/coordinators will adhere to the IFRC Stay Safe – Guide to Managers in Chapter 5 – Working with the military to ensure principled humanitarian action.





Planned Intervention

	National Society Strengthening	Budget	CHF 17,010
		Targeted Persons	
Indicators	Target		
# of lessons learned workshop conducted	1		
# of volunteers insured	100		
# of volunteer/day mobilized	1800		
Priority Actions:	<ol style="list-style-type: none"> 1. Mobilization of volunteers. 2. Provision of volunteer insurance. 3. Emergency response team (ERT) deployment. 4. Conduct lessons learned workshop 		

	Community Engagement And Accountability	Budget	CHF 12,867
		Targeted Persons	7500
Indicators	Target		
# of people reached through awareness activities such as radio messages, IEC materials distribution, mega phone	7500		
types of radio programme/jingle produced and aired through local FM	4		
# of community feedback mechanism used to informed the operation	4		
Priority Actions:	<ol style="list-style-type: none"> 1. Activate existing multi-sectoral feedback mechanism channels such as NRCS Hotline, face to face, NRCS social media, etc. 2. Support sectors to develop and disseminate key messages in the communities as well as make the best use of social media platforms, door to-door campaigns, message disseminated through mega phone etc. 3. Conduct Media mobilization to disseminate sectorial messages (Jingle, radio program, etc). 4. Collect/capture success stories/interventions for evidence-based advocacy and dissemination (capturing, documentation, videography, publication of stories, learning, good practices). 		




	Shelter Housing And Settlements	Budget	CHF 131,231
		Targeted Persons	7500
Indicators		Target	
# of households supported with emergency shelter items		1500	
Priority Actions:		<ol style="list-style-type: none"> 1. Distribution of emergency shelter items (blankets, tarpaulins, mattresses, ropes) to affected populations (from DREF). 2. Procurement and replenishment of emergency shelter items 	

	Water, Sanitation And Hygiene	Budget	CHF 951
		Targeted Persons	7500
Indicators		Target	
# of people reached with hygiene promotion activities in the response period		7500	
# of hygiene kits distributed		50	
Priority Actions:		<ol style="list-style-type: none"> 1. Hygiene promotion/sensitization; media partnership, IEC materials dissemination, door to door visit (provision of media partnership and IEC materials dissemination under RCCEA) 2. Distribution of hygiene kits 	

	Protection, Gender And Inclusion	Budget	CHF 5,705
		Targeted Persons	200
Indicators		Target	
# of people reached with violence prevention awareness sessions		750	
# of women and adolescent girls receiving dignity kits		200	
# of people supported with assistive device		50	
Priority Actions:		<ol style="list-style-type: none"> 1. Conduct child safeguarding risk analysis for the operation. 2. Distribution of dignity kits to 200 women and adolescent girls. 3. Development and distribution of IEC on sexual and gen- 	



der-based violence (provision made for this activity in RCCEA).
4. Support assistive devices for 50 people with disability.

	Secretariat Services	Budget	CHF 4,412
		Targeted Persons	
Indicators		Target	
% of financial reporting compliance to IFRC procedures		100	
Post distribution monitoring conducted		1	
Priority Actions:		<ol style="list-style-type: none"> 1. Technical support, monitoring and compliances by the Country Delegation 2. Carry out Communication and visibility activities. 	

About Support Services

How many staff and volunteers will be involved in this operation. Briefly describe their role.

At least 30-35 volunteers will be mobilized in each of the targeted district through various sectoral interventions.

In each of the 2 most impacted districts, the DREF operation will partially cover 2 positions (field coordinator and finance officer) who will be responsible for the field level activities.

At National level the EOC will led the overall coordination of the operation and will provide technical support to the district ensuring quality programming. As the EOC structure is funded by IFRC under separate funding, only finance and PMER are partially charged under this operation to ensure quality programming with an IFRC-wide approach. In addition, the EOC will mobilize technical staff or volunteer for short period as per need from the District Chapters.

Will surge personnel be deployed? Please provide the role profile needed.

N/A

If there is procurement, will it be done by National Society or IFRC?

All procurement that cannot be managed by NRCS district chapters (as per NRCS policy) will be managed by the IFRC Country Delegation/APRD in close cooperation with NRCS HQ colleagues. IFRC will use existing framework agreements where relevant, in particular for medium thermal blankets and tarpaulins procurement.

How will this operation be monitored?

Strong PMER-IM will be practiced in the operation. The participatory and bottom-up planning approaches will be carried out from the planning phase. A detailed assessment will be conducted in the targeted districts to find out the specific needs of target families. Regular and systematic monitoring visits will be carried out by IFRC, NRCS HQ, as well as at the local level. After the implementation of the operation, PDM and an exit survey will be conducted. The operation will regularly capture the challenges, learnings, and good practices. Similarly, timely situation report dissemination along with monthly reports and a final report will be done.

Please briefly explain the National Societies communication strategy for this operation.



The communications strategy for the operation will mainly focus on the followings:

Visibility: Maintain visibility of both IFRC and NRCS while working on the ground by wearing visibility jackets, caps, aprons, or t-shirts for volunteers and staffs during the field work.

Documentation: Capture in-action photos or film short clips of the volunteers working on the site. The pictures and footages will highlight the hard work, moments, and expressions of people and volunteers on the ground. The collected materials will be further used as content for social media and reporting purposes. Collection of testimonials/stories from the field by volunteers or IFRC staffs from the site. IFRC and NRCS communications focal will support staff and volunteers for the coverage and use the materials for internal and external communications.

Partnership: IFRC with NRCS communications will strengthen its partnership with local media channels (both online and print) to cover and disseminate the humanitarian need and response of NRCS and IFRC in Nepal.



Budget Overview



DREF OPERATION

- Nepal Red Cross Society Earthquake Response Operation in Far-Western Province- 2023

Operating Budget

Planned Operations	150,754
Shelter and Basic Household Items	131,231
Livelihoods	0
Multi-purpose Cash	0
Health	0
Water, Sanitation & Hygiene	951
Protection, Gender and Inclusion	5,705
Education	0
Migration	0
Risk Reduction, Climate Adaptation and Recovery	0
Community Engagement and Accountability	12,867
Environmental Sustainability	0
Enabling Approaches	21,422
Coordination and Partnerships	1,521
Secretariat Services	2,891
National Society Strengthening	17,010
TOTAL BUDGET	172,176

all amounts in Swiss Francs (CHF)





Contact Information

For further information, specifically related to this operation please contact:

- **National Society contact:** Umesh Dhakal, Executive Director, umesh@nracs.org, +977 9851056369
- **IFRC Appeal Manager:** Azmat Ulla, Head of Country Delegation, Azmat.ulla@ifrc.org, +977 9851047071
- **IFRC Project Manager:** Herve Gazeau, Programme Coordinator, herve.gazeau@ifrc.org, +977 9851221996
- **IFRC focal point for the emergency:** Naimatullah Akbari, Operations Coordinator, naimatullah.akbari@ifrc.org
- **Media Contact:**
Bipul Neupane, Director, Humanitarian Values and Communication, bipul.neupane@nracs.org, +977 9851012617

[Click here for the reference](#)

