



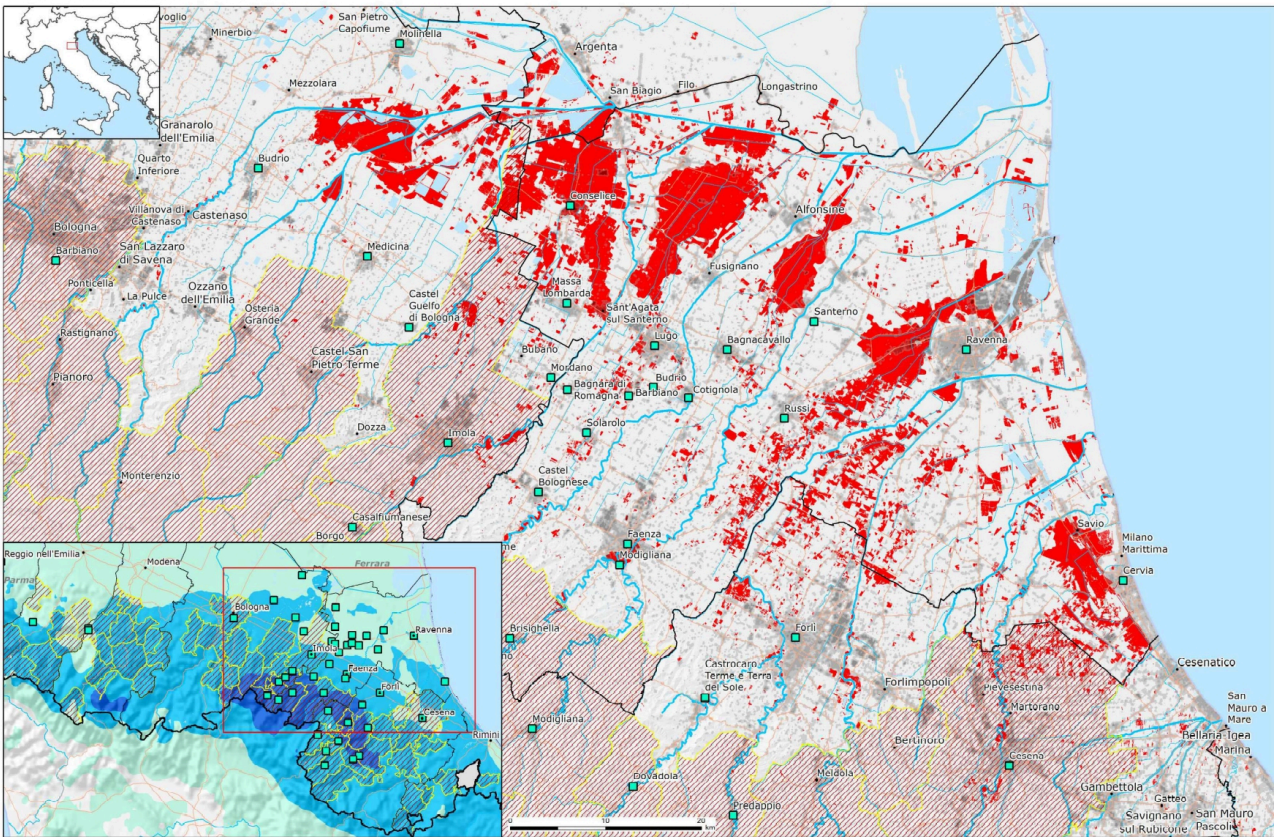
The Italian Red Cross providing rescue services in cooperation with the Italian Firefighters during the flood. Photo: Italian Red Cross

Appeal: MDRIT004	Total DREF Allocation: CHF 351,237	Crisis Category: Yellow	Hazard: Flood
Glide Number: FL-2023-000080-ITA	People Affected: 46,000 people	People Targeted: 2,350 people	People Assisted: 3,960 people
Event Onset: Sudden	Operation Start Date: 31-05-2023	Operational End Date: 01-11-2023	Total Operating Timeframe: 6 months
Targeted Areas: Emilia-Romagna			

The major donors and partners of the IFRC-DREF include the Red Cross Societies and governments of Australia, Austria, Belgium, Britain, China, Czech Republic, Canada, Denmark, Germany, Ireland, Italy, Japan, Luxembourg, Liechtenstein, Malta, Norway, Spain, Sweden, Switzerland, Thailand, and the Netherlands, as well as DG ECHO, Mondelez Foundation, and other corporate and private donors. The IFRC, on behalf of the National Society, would like to extend to all for their generous contributions.

Description of the Event

Red: flooded area
Green squares: municipalities involved
Red striped area: cumulated precipitations between 200-400mm



Map: Flooded areas are marked in red and the municipalities involved are presented with the green squares. The red striped area shows the cumulated precipitations between 200-400 mm.

Date of event

16-05-2023

What happened, where and when?

In early May 2023, a severe meteorological event began impacting the Emilia-Romagna region, triggered by intense rainfall. The region experienced two major phases of the emergency, with the first wave of storms occurring at the beginning of May. Localized floods and landslides were reported as a result of this initial weather event, with response efforts managed primarily at the local and regional levels.

The situation escalated dramatically on 14 May 2023, when a second warning was issued, activating a national response. Over the following days, a total of 350 million cubic meters of water flooded an area of approximately 800 km², affecting 100 municipalities. This was caused by around 200 mm of rainfall during the first days of May. The overflow of 23 rivers, combined with rising water levels in 13 additional rivers, triggered over 376 severe landslides, causing significant destruction.

As a result of these catastrophic events, 15 people tragically lost their lives, and 46,000 people were evacuated from their homes. The most affected areas included Ravenna, where 16,445 people were evacuated, Forlì-Cesena with 4,462, and Bologna with 2,160. At that time, 2,694 evacuees were housed in temporary shelters, such as hotels, gyms, and municipal facilities, while many others found refuge in second homes or with friends and relatives.

The floods also inflicted significant damage on the region's economy, especially in the agricultural sector. Emilia-Romagna, a key agricultural hub, suffered substantial losses to its farmland and crops. This led to the Italian government pledging EUR 2 billion in aid to support farmers and small businesses affected by the disaster.



Italian Red Cross volunteers managing temporary shelters during the flood. Photo: Italian Red Cross



Damage to homes. Photo: Italian Civil Protection Department

Scope and Scale

From May 1 to 17 May 2023, Emilia-Romagna experienced two major weather events, culminating in 80 hours of heavy rainfall. While the first event was handled at the local and regional levels through contingency plans, the second event, between 15 and 17 May 2023, was an unprecedented outlier. During this period, intermittent showers and thunderstorms, alongside moderate rainfall, particularly affected the Rimini area and surrounding regions.

The cumulative rainfall reached critical levels, with peak values recorded at 52.5 mm/hour in Riccione and 35 mm in Cattolica. The worst-hit areas included the eastern parts of Bologna, Ravenna, and Forlì-Cesena, where the cumulative totals exceeded 400 millimeters. In specific areas of the Apennines, such as Casola, Brisighella, Modigliana, and Dovadola, totals surpassed 500 millimeters, with the highest rainfall recorded at 609.8 millimeters at Trebbo station in the Lamone basin.

This extreme weather event caused severe flooding across approximately 800 square kilometers, leading to an estimated 350 million cubic meters of water entering the Reno and Romagna basins. Additionally, 379 landslides were documented across 57 municipalities, resulting in 672 road closures, 414 of which were complete. This left several rural areas isolated, particularly affecting communities in Ravenna, Forlì, Bologna, and Rimini, where approximately 23,000 people were evacuated during the peak of the disaster.

In Conselice, the community was struck three times due to its vulnerable geographic position. In Faenza, water levels rose dramatically, reaching the second floor of several homes. Romagna, being predominantly an agricultural region, suffered extensive damage to homes, agricultural fields, transportation routes, and vital infrastructure, including aqueducts and gas pipelines. The hardest-hit populations were rural communities, where livelihoods, particularly in farming, were devastated.

A damage assessment by the Regional Civil Protection Authority led to the declaration of a state of emergency in 80 municipalities. In Cesena alone, 1,617 families were affected, and over 773 reports of damage to homes, garages, and warehouses were filed. In addition, 1,507 claims concerned movable property, and 695 vehicles were reported as damaged. In the Ravenna area, over 3,000 homes in towns like Budrio, Faenza, Lugo, and Ravenna suffered damage. Furthermore, nearly 21,000 farms—comprising 49% of the affected areas—were hit hard by the floods.

By the end of the search and rescue operations, the total number of evacuees had risen to around 36,000. In the months following the disaster, significant efforts were made to rebuild critical infrastructure, such as the embankments of the Savio River and other watercourses, including the Pisciatello, Rubicone, Uso, and Montone rivers, to prevent future erosion and flooding.

Unfortunately, during the summer, additional severe weather conditions, including hail and heavy rains, further disrupted recovery efforts, hindering farm rehabilitation and cleanup operations. The distribution of in-kind donations, focusing on cleaning supplies like shovels, mops, and rubber boots, helped many families begin the process of rebuilding. Various civil protection organizations, working through regional and local interagency coordination centers, provided further relief aid to those in need.

National Society Actions

<p>Have the National Society conducted any intervention additionally to those part of this DREF Operation?</p>	<p>Yes</p>
<p>Please provide a brief description of those additional activities</p>	<p>Shelter, Housing, and Settlements Italian Red Cross teams supported camp management and provided integrated assistance to the evacuated population. Technical aid with water removal pumps was provided to facilitate the cleansing of houses.</p> <p>Livelihoods and Basic Needs Food aid and basic items were distributed to families unable to move from their houses, utilizing boats or special vehicles.</p> <p>Health The Italian Red Cross provided an active ambulance service for medical emergencies, including the use of 4x4 ambulances for specific evacuations. Specific national medical emergency capacities were deployed in Castrocaro Terme and Sant'Agata sul Santerno.</p> <p>Water, Sanitation, and Hygiene The Italian Red Cross supported awareness activities and disseminated information provided by Health Authorities.</p> <p>Coordination The Italian Red Cross operated with its local, regional, and national capacities, supporting national, regional, and local coordination efforts. Personnel were stationed in Rome (Italian Civil Protection - Italia Room and Operational Committee), Bologna (Regional Coordination Centre), and Forli (Rescue Coordination Centre).</p> <p>DREF funding was requested to cover activities not supported by other funding lines, particularly focused on direct actions for families and schools.</p> <p>Assessment Monitoring of water rivers, assessment, and damage assessment were conducted in Forli, Ravenna, and the entire affected area.</p> <p>National Society EOC The Italian Red Cross National Emergency Operations Centre (EOC) was open and active 24/7, in direct contact with the Italian Civil Protection InterAgency Coordination, through the Italian Red Cross permanent seat.</p> <p>Regional and Local Emergency Operation Centres remained open and active 24/7 to ensure coordination and an effective response.</p> <p>Other Restoring Family Links activity was in place to support family reunification after the evacuation and Search & Rescue phases.</p> <p>Italian Red Cross was active in supporting water removal pumping actions throughout the affected area. Specifically, Conselice and Faenza deployed 5 national water removal modules, with 12 medium-capacity water removal pumps and 2 high-capacity pumps, to support regional and local actions.</p> <p>Nine excavators and two triads were deployed to support early recovery actions.</p> <p>Volunteers in the Emilia-Romagna region worked on sand-bagging and flood barriers as needed.</p>



Logistic support was in place to transfer Italian Red Cross assets, along with the setup of a base of operations in Forlì.

IFRC Network Actions Related To The Current Event

Secretariat

The IFRC supported the emergency response releasing a DREF.

Other Actors Actions Related To The Current Event

Government has requested international assistance

Yes

National authorities

The Italian Civil Protection system at national, regional, and local level has been providing both emergency shelter and camp management actions, cleansing and water removal, search and rescue, food aid and integrated assistance support, as well as coordinating the response action. In response to the situation, as of 22 May, Italy has deployed a substantial number of resources, including 7,749 rescuers, 731 vehicles, 130 rescue boats and 13 helicopters (Italian Red Cross capacities deployed are included). The National Government has issued a decree to provide about EUR 2 billion for recovery and rehabilitation.

UN or other actors

The European Union Civil Protection Mechanism was activated, with the deployment of high-capacity pumping (HCP) modules. Slovakia (1 HCP module with pumping capacity of 6,000 m³/h – 25 pax), Slovenia (1 HCP module with pumping capacity 1,800 m³/h; 32 pax) and from France (1 HCP module with maximum pumping capacity of 5,400 m³/h; 41 pax).

Are there major coordination mechanism in place?

The Civil Protection Department (ICPD) has been grounded in the offices of the Presidency of the Council of Ministers since 1982. The Department coordinates prevention, preparedness, response and recovery actions in case of disaster or as part of the anticipatory action mechanism in Italy. It also coordinates the participation of the National Service in the civil protection policies of the European Union and the response to emergencies abroad.

Regionally, each of the 20 regions in Italy has its own Regional Civil Protection System, responsible for managing emergencies within its jurisdiction. These regional systems collaborate with the ICPD and local municipalities to develop emergency plans, conduct risk assessments, and coordinate response operations during disasters. They also provide training and resources to enhance the preparedness of local authorities and communities.

The Italian Red Cross (ItRC) is an operational structure of the Italian Civil Protection System, as defined by the Italian Legislative Decree 1/2018 Art. 13. The Italian Red Cross activities are defined by the DCPM 3 December 2008, in order to ensure proper recognition and integration of the activities and services provided. The Italian Red Cross has an active role in the Coordination, having a permanent seat in the Operational Committee of the Italian Civil Protection Department, a 24h/7 presence in the national situation room (Sala Situazione Italia) and participate in the Coordination also at regional, prefecture and municipal level.

In Italy, Civil Protection, is not a separate organisation, but an "umbrella coordination" that coordinates different operational structures during prevention and preparedness, response, recovery, and rehabilitation activities.

In this operation, the following elements are involved in the coordination:

- The Italian Civil Protection Department, with the Operational Committee and the national inter-agency - Emergency Operations Centre.
- The Regional Emergency Operations Centre is managed by the Regional Government.
- The Italian Red Cross in Emilia-Romagna is both operating as part of the national emergency response system (coordinated by the ICPD) and the regional emergency capacity (coordinated by the Regional Government).

Municipalities Emergency Operations Centre (COC - Centri Operativi Comunali), led by the Mayor, is set up in every involved municipality.

At the municipal level, the mayor is the main Civil Protection authority. Local Civil Protection structures, established within each



municipality, play a crucial role in emergency management and coordination. They implement preventive measures, organize evacuation plans, and coordinate emergency response activities on the ground. These structures work closely with regional and national authorities, sharing information and resources to ensure a cohesive and effective response to emergencies.

Local Crisis Unit (field command posts) led by the Fire & Rescue Corps and coordinating at the tactical level all the responding organisations.

Needs (Gaps) Identified



Shelter Housing And Settlements

From the initial satellite and ground-based assessments, it was confirmed that residents in rural areas suffered severe mud-related damage to their homes and household items. The extensive damage primarily included household appliances, such as refrigerators and stoves, significantly impacting food production and preservation. Additionally, washing machines and dryers were rendered inoperable, limiting the ability to clean clothes effectively.

Given the predominant damage in rural areas and the specific impact on essential appliances, the key priorities focused on repairing damaged homes and facilitating the acquisition of replacement appliances and electrical goods to mitigate the losses experienced by the residents.

Government support, as defined by the National Government and Regional Government through Regional Decree n. 74 (28 May 2023), was successfully implemented. The decree, which has since been extended until February 29, 2024, helped reduce the burden on those in need by:

- Suspending taxes, mortgages, and utility bills.
- Suspending administrative and judiciary economic proceedings, including fines.

A wide action to distribute in-kind goods, coordinated by various organizations such as Caritas, was carried out. Initially, the assessment identified a noticeable gap in initiatives involving multi-purpose cash or voucher schemes, which could have provided more tailored support to meet individual needs. However, this gap was later addressed by the Italian Red Cross through the DREF (Disaster Relief Emergency Fund) funds, which were specifically allocated to support these types of interventions, ensuring that affected individuals had access to more flexible forms of assistance.



Livelihoods And Basic Needs

The Romagna area of the Emilia-Romagna region has a rich agricultural heritage, and current data confirm that the agricultural sector still plays a crucial role in Italy's supply chain. Emilia-Romagna continues to contribute to 20% of the country's vegetable and legume production, 14% of cereal production, 6% of fruit and citrus production, and 11% of the national viticulture, underscoring its importance despite the significant challenges posed by the floods.

The floods have caused widespread devastation, including the destruction of approximately 10 million trees used for food production. The initial assessment data on this destruction was confirmed through subsequent evaluations. Support to rural farmers has been a priority, and these efforts have helped reduce long-term socio-economic impacts.

The Emilia-Romagna Region has still fully implemented the government's response plan, as outlined in Regional Decree n. 74 (28 May 2023). Actions taken include:

- Providing temporary layoff benefits for affected employees.
- Delivering financial support for self-employed individuals and small- and medium-sized enterprises.
- Allocating funds to small- and medium-sized enterprises to restart operations through exports and loans.
- Ensuring that the Ministry of Agriculture supplies heavy agricultural machinery and carries out rehabilitation efforts across affected areas.





Education

School buildings suffered similar damage to homes. In order to ensure the continuation and resumption of schooling, particularly during the critical final months of the school year, rapid recovery actions were essential. The initial damage assessment identified about 105 schools that were affected, impacting approximately 150,000 students.

Governmental measures were implemented to support distance learning and ensure continuity of educational programs. Additionally, the Italian Red Cross, through DREF funds, contributed to the rapid recovery efforts by facilitating the acquisition of necessary materials and supporting temporary learning spaces, enabling students to resume their education while the damaged facilities were being restored.

Operational Strategy

Overall objective of the operation

After the timeframe extension, the overarching goal of this operation was to contribute to providing humanitarian assistance to approximately 2,350 people (families, farmers, scholars) in the rural area of Emilia-Romagna.

The intervention plan involved supporting the identified individuals in need by providing shelter and livelihood activities through cash and voucher assistance, as well as distributing services and supplies in-kind to expedite early recovery activities.

Operation strategy rationale

The workplan for the operation was formulated to address the needs of the affected population efficiently. It comprised three key elements:

1. Integrated with Italian Red Cross response in Emilia-Romagna, coordinated nationally and regionally.
2. Coordinated within the civil protection system to prevent targeting issues or overlapping.
3. Managed through simple procurement actions to avoid duplication with other initiatives.

The response unfolded in distinct phases:

Phase 1: Assessment

- Rapid and detailed assessments conducted to analyze damage and identify People In Need (PIN).
- Utilization of Community Engagement & Accountability (CEA) activities and the Standardized Approach to Data Disaggregation (SADD) for targeted analysis.

Phase 2: Procurement of vouchers

- Shelter and household items: Assistance for home restoration services and in-kind home goods (e.g., household appliances) for a total of 650 and 500 people, respectively.
- Livelihoods and Agricultural materials: Vouchers valued at EUR 100 each for 600 people to purchase agricultural materials.
- Education: Support for 20 classrooms with EUR 1,000 each for restoration and provision of educational kits.

Phase 3: Voucher distribution

- Vouchers distributed to the targeted population through local Red Cross branches and stations.
- National coordination using centralized data systems, GIS, and data collection platforms.

Phase 4: Evaluation of effects

- Continuous assessment of operation progress and effectiveness.
- Monitoring and evaluation (M&E) actions implemented, utilizing the Regional Emergency Operations Center for feedback.

Phase 5: Exit strategy

- Development of a plan to transfer responsibilities to local and regional authorities for mid to long-term assistance and rehabilitation.
- Ensuring a smooth transition for sustainable support.

Throughout, coordination with stakeholders, including local authorities, remained strong. The strategy focused on providing vouchers and in-kind assistance, with in-kind support identified as more functional for immediate needs. The value of vouchers per person allowed flexibility based on damage impact. Average monthly household expenditure in Emilia-Romagna was considered, and vouchers were not



considered income under Italian Law.

The action did not foresee replenishment of items distributed, only the distribution of new elements not in Italian Red Cross warehouses.

Targeting Strategy

Who was targeted by this operation?

The operation aimed to aid families and farmers in Romagna's rural areas, with a specific focus on identified localities facing substantial immediate damage and prolonged recovery times, especially for plantations and fruit trees. Additionally, selected educational facilities were prioritized for swift resumption of education, considering communication route damage.

Targeting action centered on farmers and farmhouses, crucial components of Romagna's rural economy. Assistance extended to all flood-affected towns, recognizing small farming businesses as vital to farmers' livelihoods.

The operation's rural focus included traditional shelter assistance and economic recovery support. Considering the close ties of certain households to their working place – the farm – efforts were tailored to comprehensively assist them, addressing shelter needs and ensuring immediate recovery and sustainability.

No financial support was sought for National Society personnel and equipment. Operational costs were covered by internal funding lines or the Civil Protection system, factoring in the cost of living in Italy and Europe to enhance aid provision.

Explain the selection criteria for the targeted population

The operation focuses on supporting families who have been directly impacted by the floods, including families who have experienced the loss or severe damage to their livelihoods, making it difficult for them to sustain their daily lives. Households with poor economic status are prioritized, recognizing the financial challenges they face in recovering from such a catastrophic event. Additionally, the assistance extends to families who have been specifically identified through detailed assessments as being in need of support. The Italian Red Cross ensures that families are targeted who are not included in similar programmes in order to support their recovery process as well. By employing these criteria, aid and resources are provided to those who are most vulnerable and in urgent need of assistance.

In addition to supporting affected families, addressing the needs of farmers whose livelihoods have been damaged by the floods is essential. These farmers have experienced significant losses, affecting their ability to sustain their agricultural operations and support their families. Similarly, assistance to farmers and their families was also extended in recognition of the challenges they have been facing in recovering their agricultural activities, as well as ensuring their well-being. Prioritization of farmers who have had their farmhouses damaged or completely destroyed was further considered as the physical state of farmhouses plays a crucial role farmers' ability to resume activities and maintain a stable living.

The targeting action was conducted in coordination with the emergency management service and with the local authorities, to ensure data validation, particularly when analysing properties (farms are registered, as well as terrains, building, turnover) and economic status.

Various resources have been used to better manage the targeting action, which are listed below:

- Specific municipalities included in the state of the emergency and the area of intervention.
- Satellite (Copernicus) based damage assessment.
- Land damage assessment organised by each municipality and coordinated at the regional level.
- List of people in need asking for support from the Municipality.
- Direct assessment of the areas involved.

Having the targeting shared with the Local Civil Protection Authorities ensured:

- Sharing of information about specific vulnerabilities (e.g., impairments, social support...).
- Sharing of information about specific needs.
- Avoidance of overlapping with other operational structures (including volunteer-based organisations participating in the Civil Protection system or responding to the emergency).



Total Targeted Population

Women	930	Rural	100%
Girls (under 18)	260	Urban	-
Men	920	People with disabilities (estimated)	-
Boys (under 18)	240		
Total targeted population	2,350		

Risk and Security Considerations

Please indicate about potential operation risk for this operations and mitigation actions

Risk	Mitigation action
New hydrometeorological event will enlarge the damaged produced by the flood.	Shelter and livelihoods support were possible, management of staging areas and camps, additional emergency response operations, including Search & Rescue in place.
Emilia-Romagna, in relation to the national context, is characterized by a "moderate" level of seismic activity, particularly in the Romagna region, where historically the strongest earthquakes have occurred.	Earthquake response contingency plans are existing and operational. Lessons learned during the response in 2012 had been included in the new Civil Protection Law. Italian Red Cross capacities for responding to earthquake are available at regional and national level.
The Emilia-Romagna region, compared to the rest of the country, experiences a moderate level of seismicity. This is especially true in the Romagna area, which has historically been prone to the occurrence of more intense earthquakes.	

Please indicate any security and safety concerns for this operation

All ItRC Volunteers and staff are properly trained, equipped and insured. Health and safety procedures are in place according to the Italian Law (L.81/2008) and specific COVID-19 Standard Operating Procedures (SOPs) have been issued by Emilia Romagna Region to reduce the probability of Health & Safety issues during response operations.

No specific security issues are considered, CEA is fundamental to reduce potential incidents (mainly verbal assaults can be expected) with the affected population.

Emergency Medical Service, Fire and Rescue services, police are all responding services available and well operational in the area.

Has the child safeguarding risk analysis assessment been completed?

Yes

Implementation



Shelter Housing And Settlements

Budget: CHF 227,271

Targeted Persons: 1,150

Assisted Persons: 1,679



Indicators

Title	Target	Actual
Percentage of people reporting that the amount received was sufficient to contribute to their recovery	70	95
Number of people assisted with voucher for home restoration	650	1,679
Number of people assisted with in-kind home goods	500	1,255

Narrative description of achievements

• The Italian Red Cross, through its Local Branches, distributed vouchers to the targeted persons in the municipalities of Cesena, Imola, Sant'Agata, and Conselice, surpassing the originally targeted number of beneficiaries. This was made possible due to the strategic procurement approach implemented by the Italian Red Cross, which secured slightly lower prices for the goods and services. Additionally, the suppliers involved contributed by increasing the quantity of materials or vouchers provided. As a result, more people were able to benefit from the assistance, and the outcomes achieved exceeded the initial projections. The Post-Distribution Monitoring (PDM) was implemented by the Italian Red Cross's local branches, following beneficiaries from the delivery of shelter assistance to its practical application. The branches monitored the overall satisfaction of households with the housing support they received, ensuring needs were adequately addressed. Please note that the higher value was taken in persons assisted to avoid double counting in this area.

Lessons Learnt

- The structured procurement action that resulted in cost reduction for both in-kind items and vouchers stands out as a key lesson. This underscores the importance of efficient procurement strategies in optimizing resources, allowing for a broader reach and impact. The success in surpassing the initially targeted number of beneficiaries further highlights the significance of strategic procurement in enhancing the overall effectiveness of assistance operations.
- The collaboration with municipalities played a fundamental role in avoiding overlap with other aid interventions. This cooperative approach ensured streamlined coordination, preventing redundancy and optimizing the impact of assistance efforts. The significance of harmonizing efforts with local authorities contributes to a more cohesive and effective humanitarian response, emphasizing the importance of community collaboration in shaping successful aid strategies.

Challenges

- The need to wait for the definition of state aid to ensure reaching the most vulnerable population posed a challenge in determining the sample to support. Patience and coordination with state institutions were required to guarantee targeted assistance.
- The presence of various spontaneous donations distributed in the area necessitated adjustments to the types of donations offered to the target population. This adaptation required flexibility and prompt management of the distribution process.
- The realization that not the entire population desires to receive vouchers presented a challenge in defining beneficiary preferences. Balancing expectations and individual requests demanded a targeted approach and clear communication.



Livelihoods And Basic Needs

Budget: CHF 103,305

Targeted Persons: 600

Assisted Persons: 933

Indicators

Title	Target	Actual
Percentage of people reporting that the amount received was sufficient to contribute to their recovery	70	90

Narrative description of achievements

Through agricultural cooperative societies, which represent multiple farmers, 1,250 vouchers were distributed, reaching a total of 933 beneficiaries. The areas covered are primarily in the Province of Ravenna, including the municipalities of Ravenna, Bagnacavallo, Cervia, Fusignano, Conselice, Piangipane, Lugo, Granarolo Faentino, and Faenza. Through its local branches, the Italian Red Cross conducted Post-Distribution Monitoring (PDM), ensuring that beneficiaries of livelihood and basic needs assistance were supported from the receipt of goods to their proper utilization. Satisfaction surveys were also carried out to assess the overall impact and effectiveness of the aid provided.

Lessons Learnt

- The successful distribution of vouchers through agricultural cooperative societies underscored the importance of effective targeting. Leveraging existing community structures ensured efficient outreach, reaching a substantial number of beneficiaries.

Challenges

- Navigating economic fluctuations within the agriculture sector emerged as a significant challenge during the voucher distribution for agricultural material. Determining the appropriate value of vouchers and in-kind support necessitated ongoing monitoring and adaptation to the dynamic economic landscape.



Education

Budget: CHF 20,661

Targeted Persons: 600

Assisted Persons: 1,348

Indicators

Title	Target	Actual
Percentage of respondents indicating that the content of the educational kit was relevant	70	85
Number of classes provided with an educational kit	20	60

Narrative description of achievements

- Support to a school affected by the flood in the municipality of Lugo (Ravenna), comprising a total of 60 classrooms, involved providing the institution with 10 interactive digital whiteboards. These boards can be easily transported between classrooms, facilitating their versatile use across all classes. The Post-Distribution Monitoring (PDM) process was carried out by the local branches of the Italian Red Cross, ensuring continuous follow-up with the beneficiaries from the delivery of educational materials to their usage in schools. Beneficiaries were monitored throughout, and their satisfaction with the aid received was carefully recorded to improve future support.

Lessons Learnt

- Supporting distance and face-to-face learning with the same aid can be complex, as well as ensuring the provided assistance can really be used within the educational facilities identified. It has been solved by establishing a direct conversation with the school affected and identifying the specific needs with them.

Challenges

- The project faced financial constraints, as it had to align with the specific budgetary considerations related to the cost per person. Balancing the cost with the quality and functionality of the aid was crucial to ensure they met the educational needs without exceeding the budget. The solution identified is able to support the entire school, instead of only 20 classes, providing mobile tools that can be moved where more needed.





Community Engagement And Accountability

Budget: CHF 0

Targeted Persons: 0

Assisted Persons: 0

Indicators

Title	Target	Actual
Percentage of people satisfied with the amount of information shared before receiving the voucher assistance	70	80

Narrative description of achievements

- The action with the communities has been managed by the Volunteers of the Local Branches, who are already involved in daily interactions and intervention. This activity aims to establish a local and permanent contact between affected communities and volunteers (that are coming from the same area or communities affected by the event). Local branches of the Italian Red Cross conducted a thorough Post-Distribution Monitoring (PDM) process, ensuring that beneficiaries of community engagement programs were guided from the receipt of resources to their effective use. Feedback was actively gathered to measure satisfaction and adjust strategies where necessary.

Lessons Learnt

- The CVA approach is not invariably seen as the best solution by its beneficiaries in Italy (it happened in Sardinia and in Emilia Romagna). Sometimes, people prefer in-kind assistance, as it directly caters to their specific needs, reflecting a deep-rooted cultural inclination. This aspect must be carefully weighed, underscoring the critical role of CEA actions. Effective CEA is instrumental in balancing the actual requirements of the affected populace and their acceptance of the aid provided. It ensures that the support fulfils tangible needs and resonates with the community's cultural and social contexts.

Challenges

Balancing efficacy and acceptability demands robust CEA strategies to bridge the gap between what is offered and culturally resonant, ensuring aid effectiveness and community engagement. The Volunteers from the affected branches are great insiders, able to communicate with the people in need (considering they are in a similar situation) but, on the other side, are also under heavy stress (considering both response operations, interactions and losses). Balancing the number and variety of activities on the shoulder of every Volunteer deployed (even with MHPSS support) is the main challenge in the humanitarian sector.



Financial Report

DREF Operation

Selected Parameters			
Reporting Timeframe	2023/5-2025/2	Operation	MDRIT004
Budget Timeframe	2023/5-2023/11	Budget	APPROVED

FINAL FINANCIAL REPORT

Prepared on 21/May/2025

All figures are in Swiss Francs (CHF)

MDRIT004 - Italy - Flood 2023

Operating Timeframe: 31 May 2023 to 30 Nov 2023

I. Summary

Opening Balance	0
Funds & Other Income	351,237
DREF Response Pillar	351,237
Expenditure	-347,024
Closing Balance	4,213

II. Expenditure by planned operations / enabling approaches

Description	Budget	Expenditure	Variance
PO01 - Shelter and Basic Household Items	227,271	223,058	4,213
PO02 - Livelihoods	103,305	103,305	0
PO03 - Multi-purpose Cash			0
PO04 - Health			0
PO05 - Water, Sanitation & Hygiene			0
PO06 - Protection, Gender and Inclusion			0
PO07 - Education	20,661	20,661	0
PO08 - Migration			0
PO09 - Risk Reduction, Climate Adaptation and Recovery			0
PO10 - Community Engagement and Accountability			0
PO11 - Environmental Sustainability			0
Planned Operations Total	351,237	347,024	4,213
EA01 - Coordination and Partnerships			0
EA02 - Secretariat Services			0
EA03 - National Society Strengthening			0
Enabling Approaches Total			0
Grand Total	351,237	347,024	4,213

Please explain variances (if any)

The total approved budget was CHF 351,237. Due to strategic procurement, more beneficiaries were reached than originally planned, particularly in shelter and livelihoods support. Accordingly, an unspent balance of CHF 4,213 to the IFRC-DREF. Please see below for detailed financial report

DREF Operation

Selected Parameters			
Reporting Timeframe	2023/5-2023/2	Operation	MDRIT004
Budget Timeframe	2023/5-2023/11	Budget	APPROVED

FINAL FINANCIAL REPORT

Prepared on 21/May/2025
All figures are in Swiss Francs (CHF)

MDRIT004 - Italy - Flood 2023

Operating Timeframe: 31 May 2023 to 30 Nov 2023

III. Expenditure by budget category & group

Description	Budget	Expenditure	Variance
Relief Items, Construction, Supplies	329,800		329,800
Construction Materials	67,900		67,900
Seeds & Plants	48,500		48,500
Teaching Materials	19,400		19,400
Utensils & Tools	48,500		48,500
Cash Disbursement	145,500		145,500
Contributions & Transfers		325,844	-325,844
Cash Transfers National Societies		325,844	-325,844
Indirect Costs	21,437	21,180	257
Programme & Services Support Recover	21,437	21,180	257
Grand Total	351,237	347,024	4,213

Contact Information

For further information, specifically related to this operation please contact:

National Society contact: Lorenzo Stefano Massucchielli, Head of International Emergencies, lorenzo.massucchielli@cri.it, +393701294467

IFRC Appeal Manager: Dora Veto, Regional DREF Senior Officer, dora.veto@ifrc.org

IFRC Project Manager: Dora Veto, Regional DREF Senior Officer, dora.veto@ifrc.org

IFRC focal point for the emergency: Alma Alsayed, Regional Operations Coordinator, alma.alsayed@ifrc.org

Media Contact: Elena Santiemma, Head of Humanitarian Diplomacy and Social Communication Unit, elena.santiemma@cri.it

[Click here for reference](#)

