

OPERATION UPDATE

Myanmar | Cyclone Mocha

Emergency appeal No: MDRMM018 Emergency appeal launched: 17/05/2023 Operational Strategy published: 26/05/2023	Glide No: TC-2023-000069-MMR
Operation update #3 (6-month update) Date of issue: 26/12/2023	Timeframe covered by this update: From 17/05/2023 to 17/11/2023
Operation timeframe: 12 months (17/05/2023 - 31/05/2024)	Number of people being assisted: 37,500 people (7,500 households)
Funding requirements (CHF): CHF 3.5 million through the IFRC Emergency Appeal CHF 5 million Federation-wide	DREF amount initially allocated: CHF 700,000

To date, this Emergency Appeal, which seeks CHF 3,500,000 for the IFRC, is 56 per cent funded. Further funding contributions are needed to enable the Myanmar Red Cross Society, with the support of the IFRC, to continue with the response efforts and provide humanitarian assistance and protection to thousands of vulnerable people.



MRCS provide essential relief item such as shelter tool kit, family kit and various hygiene items for communities affected by Cyclone Mocha. (Photo: MRCS.)

A. SITUATION ANALYSIS

Description of the crisis

Cyclone Mocha caused significant damage in Myanmar, particularly in areas that are already grappling with civil unrest, a high number of internally displaced people, armed clashes, and fragile economic conditions. The cyclone that brought about intense wind and heavy rainfall led to significant flooding and damages in Rakhine, Chin, Magway, Ayeyarwady, Mandalay, and Sagaing states and regions. The states of Rakhine, Chin, and Magway regions were particularly hard hit, prompting the Myanmar Red Cross Society (MRCS) to respond. The MRCS, operating as an independent humanitarian organization in accordance with the Myanmar Red Cross Society Law of 2015 to provide emergency aid, including medical assistance, shelter, and essential supplies to the affected communities.

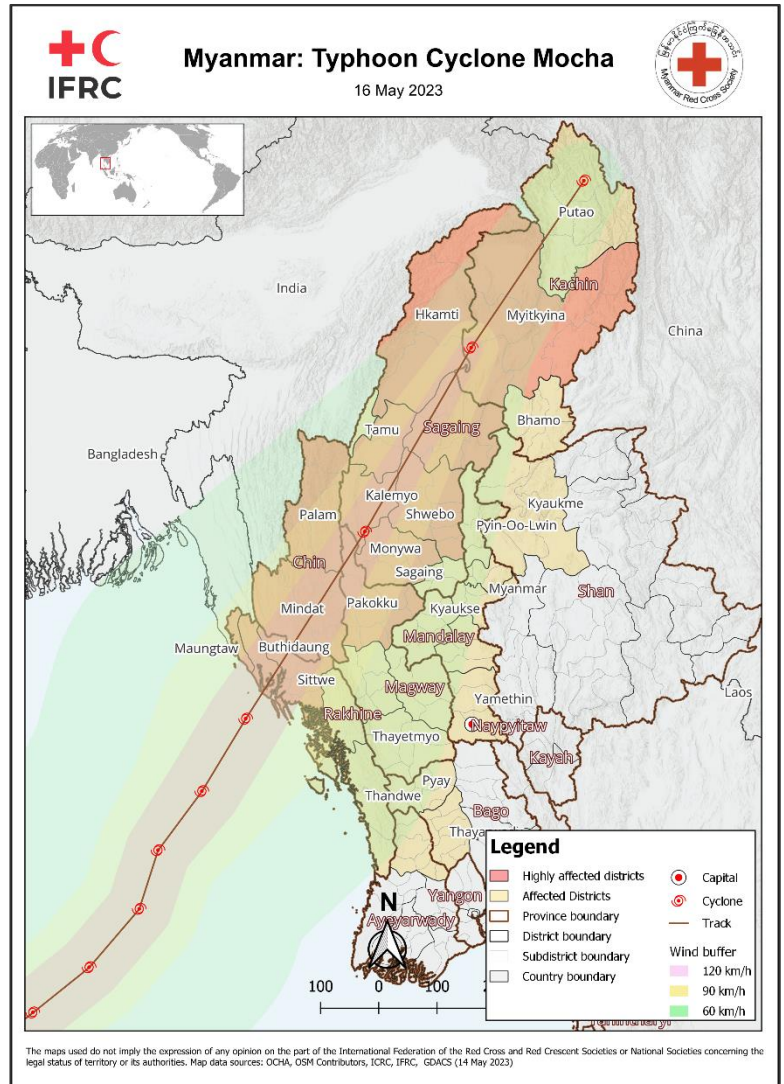
This cyclone occurred in an already challenging humanitarian context in Myanmar. OCHA's 2023 Humanitarian Needs Overview projected that over 17.6 million people would require humanitarian assistance in Myanmar in 2023¹. As per MRCS's branch analysis, the cyclone affected around 1.1 million individuals from more than 237,000 households across the country. A large number of semi-permanent and temporary shelters were damaged or destroyed, leaving over 200,000 houses in need of repair. Critical infrastructure, including water systems, sanitation facilities, hospitals, clinics, schools, and transportation networks, suffered severe damage or complete destruction. Livelihoods were disrupted, with the loss of livestock and floods impacting croplands.

The aftermath of the cyclone has led to a rise in the prices of basic goods, affecting the physical and mental health of the affected population. Healthcare access is disrupted, compounded by shortages of medicine.

Summary of response

Overview of the host National Society and ongoing response

The Myanmar Red Cross Society is an independent humanitarian organization that operates impartially and neutrally. Its role as an auxiliary to the state in the humanitarian field, operating in line with the Red Cross Red Crescent Fundamental Principles, is enshrined in the Myanmar Red Cross Society Law of 2015. The MRCS has a strong presence with over a thousand trained Emergency Response Team (ERT) volunteers and 44,000 members nationwide, including 7,994 core Red Cross Volunteers (RCV) active at the community level. The organization has 23 warehouses strategically

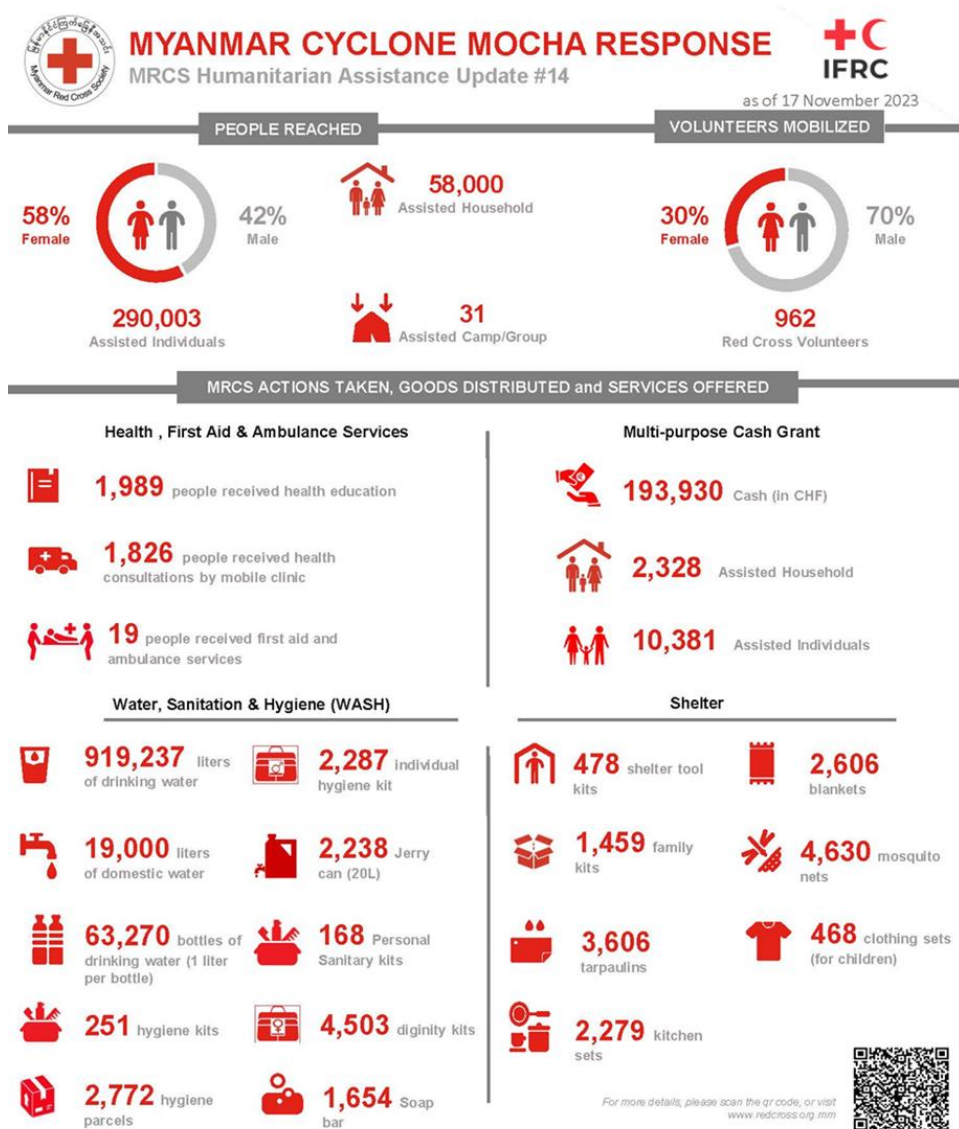


¹ [UNOCHA Myanmar Humanitarian Needs Overview 2023](#)

located throughout the country to support preparedness and response efforts. It also has regional and state branches across the country and a substantial presence in various operational hubs in Rakhine State, under the management of the MRCS Rakhine Operations Management Unit established over the past decade. During this reporting period, 962 volunteers were deployed to aid the most affected communities since the cyclone made landfall.

The MRCS has established communication channels with local authorities, communities and other stakeholders in the affected areas through its local staff, volunteers, and branches. This enables them to reach vulnerable communities and provide immediate humanitarian assistance. Through its community presence, MRCS has access to the ground and has collected data as well as assessed the impact of Cyclone Mocha in Rakhine State and Magway and Ayeyarwady regions in particular.

In anticipation of the cyclone, the MRCS activated its Emergency Operations Centre (EOC) one week before landfall and initiated preparedness measures and early actions well in advance. The national MRCS EOC has also regularly communicated and received information from the State and Branches EOC. As a result, MRCS was on standby and ready to mobilize the volunteers and dispatch the NFI items. Prior to landfall, MRCS volunteers in the projected path and impact zone assisted with evacuations, conducted awareness campaigns and gathered preliminary data. After the cyclone made landfall, on 14 May 2023, MRCS branches mobilized their volunteers to engage in rescue operations, clear roads and debris, provide first aid and psychological first aid, and collect initial observations and data. MRCS also mobilized its existing operational resources to respond to the aftermath, deploying trained expert personnel to provide assistance and support services such as logistics and supply chain directly. The response in Rakhine state has focused on communities whose vulnerability was increased by Cyclone Mocha as part of the MRCS ongoing humanitarian activities in Rakhine.



MRCS response summary as of 17 November 2023. (Source: MRCS IM Unit)

As of 17 November 2023, MRCS has reached 290,003 people from 58,000 households in relief assistance, including, shelter, livelihood, health and hygiene items, and multi-purpose cash assistance. A total of 19,586 individuals from 4,277 households received shelter assistance through the distribution of tarpaulins, family kits, and blankets. In the hardest-hit region of Rakhine State, MRCS distributed a total of 982,507 litres, of which 919,237 litres from water trucks and 63,270 litres in the form of 1L bottles, of clean drinking water, along with 19,000 litres of domestic water

to affected communities, reaching 50,042 households (250,210 people). To uphold the dignity of the affected communities, hygiene parcels for families, specialized hygiene kits for men, and dignity kits for women were distributed in various affected regions, including Rakhine, Magway, Yangon, Ayeyarwady, Bago, and Mandalay. 12,586 individuals were reached with these items. Additionally, MRCS distributed 468 sets of children's clothing to support affected children. MRCS's mobile health clinics in Rakhine have provided assistance to 1,826 individuals since it started on 17 May 2023. In the initial response to Cyclone Mocha, 19 people received first aid and ambulance service from MRCS. Furthermore, 1,989 individuals attended health education organized by MRCS. Lastly, a total of 451 million MMK or CHF 193,930 in multi-purpose cash grants (MPCG) were distributed to 2,328 households benefitting 10,381 people. It is worth noting that some households received multiple support, thus a comprehensive approach was adopted when calculating the total people reached to avoid double counting.

Operational coordination meetings are regularly organized to update the partners in collaboration with the IFRC, involving in-country partners and the International Committee of the Red Cross (ICRC), to provide technical and planning support to MRCS for the response. MRCS, IFRC, and ICRC meet in Movement tripartite meetings at a strategic level. The regular tripartite security cell meetings are being used for regular risk analysis and security planning. Moreover, MRCS and IFRC are observers in HCT meetings and Cluster coordination as part of their external coordination efforts.

The development of the Federation-wide Operational Strategy involved a shared leadership approach, drawing upon the expertise of the IFRC network and past experiences from drafting the Unified Plan. To ensure efficient communication and reporting, the monitoring and reporting mechanisms are coordinated under one single reporting system, aiming to streamline reporting channels between the MRCS and the IFRC members. In addition, the IFRC mobilized five rapid response personnel (surge) for the operation, including for the combined Myanmar Shelter/ NFI/ CCCM Cluster to enhance and complement the existing coordination structure.

The MRCS, supported by the IFRC network, has been actively engaged in long-term programming in Rakhine state since the large-scale violence in 2012. Despite some challenges in maintaining continual access to communities in need (as faced by most humanitarian actors), MRCS has been a well-recognized humanitarian actor, advocating with relevant stakeholders based on its humanitarian mission.

In alignment with its established functions under national law, the MRCS, with IFRC support, is actively involved in humanitarian diplomacy. This involves securing access to reach populations in need during the response operation and ongoing programmatic actions. The IFRC continues to provide strategic and operational guidance, collaborating with other humanitarian actors as needed, to enhance the National Society's capacities, ensuring it remains and is perceived as an effective and efficient principled humanitarian actor.

The 5 in-country Partner National Societies (Swedish Red Cross, Finnish Red Cross, German Red Cross, Norwegian Red Cross, and Danish Red Cross) together with 9 other Partner National Societies contributed to Cyclone Mocha Operation through this Federation-wide Emergency Appeal. The Myanmar Red Cross Society expresses its gratitude to all contributing partners for their support thus far. The ICRC is also providing support to the MRCS for its response, as reported separately².

² For further details, see for example: [ICRC Myanmar Operations: Facts and Figures — Jan - June 2023](#)



IFRC network members contributing to this Federation-wide appeal and whose collective support is reported in this Operation Update.

Needs analysis

Needs analysis³

Cyclone Mocha caused widespread devastation in vulnerable communities in Myanmar due to strong winds, flash floods, and landslides. The affected communities, already vulnerable and on top of that require immediate relief in various areas namely, Shelter, livelihoods, healthcare, and water, sanitation, and hygiene (WASH) have been identified as critical needs. Most houses, particularly in Rakhine and Chin states, consist of semi-permanent structures and suffered significant damage. Livelihoods were severely impacted, with disruptions in agriculture, livestock, and alternative income sources. Safe drinking water, emergency sanitation facilities, and hygiene promotion are needed to prevent the spread of waterborne and vector-borne diseases. Displaced individuals lack access to hygiene items and require community engagement for WASH and healthcare services.

There is a need to adopt an approach that is sensitive to gender and diversity as highlighted in the previous update. This approach identified needs while considering aspects of protection, gender, and inclusion. In line with this, the MRCS is responding in accordance with the IFRC Child Safeguarding Policy and minimum standards for PGI in emergencies.

Additional protection issues include an increased risk of unexploded ordnance movement in conflict areas. To support an integrated protection approach with a focus on “do no harm,” MRCS integrated community engagement and accountability interventions such as feedback mechanisms in this operation.

Operational risk assessment

The Myanmar Red Cross Society (MRCS) has consistently advocated for the expansion of access to Rakhine, especially since additional restrictions in early June 2023. The situation in Rakhine then took a downturn in early November 2023, marked by clashes between armed forces in the state.

³ Please refer to [Operation Update 1](#) which have the detailed need analysis.

As of writing this report, the situation in the county has escalated between the Myanmar Armed Forces (MAF) and several ethnic armed organizations, leading to intensified clashes. On 27 October 2023, ethnic armed groups announced “Operation 1027” against MAF in Northern Shan State. This escalation created a new alliance of fighting between Ethnic Armed Organizations (EAOs) and Myanmar Armed Forces (MAF) and multiplied in other regions of the country.

On 13 November 2023, clashes reignited between the Myanmar Armed Forces (MAF) and the Arakan Army (AA) in Rakhine, ending the relative period of calm since the informal ceasefire of November 2022. As of mid-November, the clashes expanded to areas of the North-West (NW), South-East (SE), and urban areas within Rakhine State, with impacted areas experiencing intensified fighting. Security measures have been significantly heightened. Additional checkpoints and roadblocks were installed across towns. Ongoing clashes are occurring in multiple areas, including northern Shan, Rakhine, Chin, Kayah, Mon and Sagaing.⁴

The evolving situation is creating a risk for this operation, particularly, in Rakhine. However, based on the current situation it is important also to assess other risk factors, outlined below:

Institutional Risk:

- Given the ongoing intensification of the hostilities, both MRCS and the IFRC network must now carefully examine contextual risks, particularly those associated with project implementation access, safety, and security for MRCS Staff and Red Cross Volunteers. There is a need for detailed and clear situation analysis regarding the evolving situation. While the Operational Strategy initially mentioned this contextual factor as having a medium likelihood, the present circumstances suggest a high likelihood of armed clashes spreading and having a larger impact on lives and livelihoods.
- Given the community divisions and politicized context, there is a high likelihood of reputational risk, stemming from perceptions and possible misunderstandings. These factors represent additional layers of complexity that could contribute to elevated risk levels.

Operational Risk:

- Restricted access to the operational areas particularly in Rakhine State. Since 13 November 2023, humanitarian access has been mostly limited. This will risk a delay in implementation.
- The supply chain in the country is fluctuating due to price hikes and goods availability in the market for local procurement. This situation creates uncertainty in providing essential household item assistance to targeted communities.
- International procurement faces significant delays, stretching for months, due to the lengthy approval process from authorities for customs clearance.

In addition, an [IFRC-DREF](#) was launched on 20 October 2023 to support the Myanmar Red Cross Society in delivering assistance to communities affected by floods, particularly in the Bago area. While the primary flood-affected region differs from the scope of this emergency operation, the impending risk associated with monsoon persists.

These challenges and risks underscore the complex environment in which the Cyclone Mocha emergency operation is being implemented. The evolving challenges heighten the concern that specific targeted populations may face obstacles in receiving the planned assistance, necessitating potential adjustments to targeting strategies as the situation continues to evolve.

For more comprehensive risk analysis, including likelihood scenario assessments and mitigation measures that MRCS is carrying out with the support of IFRC, ICRC and PNS please refer to the [Operational Strategy \(OS\)](#) document.

⁴ [UNOCHA Myanmar: Intensification of clashes Flash Update #4](#)

B. OPERATIONAL STRATEGY

Update on the strategy

The current Operational Strategy supported by the IFRC network includes relief and early recovery, to provide for the immediate needs as well as resilience-building of the affected population. It also focuses on the response capacity and readiness of MRCS and the affected communities.

In early June 2023, MRCS's comprehensive situational analysis revealed that among the initially identified five regions and states, Magway Region and Rakhine State were prioritized for humanitarian assistance based on impact and needs. It has become apparent that some of the regions were not as severely affected by the cyclone as initially expected, and response organizations and authorities have already provided assistance to those areas.

By looking at context and vulnerability, MRCS's target approach is to ensure that aid is directed to those most in need, enabling MRCS to maximize its impact and resources for the benefit of the affected communities.

The operational strategy also prioritizes risks based on their significance to the MRCS. Some risks may have a higher priority due to their potential for severe consequences or high likelihood of occurrence due to escalating clashes. Therefore, considering the above-mentioned risk and impact on the operation, the Emergency Appeal will be revised in the upcoming weeks.

C. DETAILED OPERATIONAL REPORT

STRATEGIC SECTORS OF INTERVENTION

The data on the number of people reached in all sectors provides an overview of the overall reach by MRCS. While specific IFRC Secretariat-reach data may not be available for every sector, any available information on IFRC Secretariat-reach will be highlighted where applicable. A comprehensive data aggregation will be reported in future reports. In this update, additional indicators were added to clearly differentiate between the reach of the Secretariat and the broader Federation-wide reach. This distinction is intended to provide a transparent overview of the reach attributed to the IFRC Emergency Appeal (EA) compared to the reach achieved through other partners.

	Shelter, Housing and Settlements	Federation Wide Target	37,500	
		Female: 19,500	Male: 18,000	
		Secretariat Target	22,500	
		Female: 11,700	Male: 10,800	
Objective:	<i>To support recovery shelter assistance for affected people through the provision of emergency shelter relief and the establishment of safer shelters.</i>			
Key indicators:	Indicator	Secretariat Target	Secretariat Reach	Fed-Wide Reach
	<i>Number of people provided with basic and emergency shelter assistance.</i>	22,500	19,586	19,586

<i>Number of tarpaulins provided for household usage</i>	7,100	3,606	3,606
<i>Number of shelter toolkits provided</i>	1,000	478	478
<i>Number of family kits provided</i>	1,800	1,459	1,459
<i>Number of kitchen sets provided</i>	n/a ⁵	n/a	2,279
<i>Number of blankets provided</i>	3,608	2,606	2,606

Since the cyclone's landfall, the MRCS has steadfastly supported affected communities by ensuring the provision of essential household items and emergency shelter items. Notably, a total of 19,586 individuals in the regions of Rakhine, Magway, Bago, and Mandalay have received assistance.

A total of 3,606 tarpaulins, 478 shelter toolkits, 1,459 Family Kits, 2,279 Kitchen Sets, and 2,606 blankets have been distributed, benefitting 4,277 households (19,586 people). Most of the households received multiple-item support, and a thorough data review was made to ensure that there was no double counting in calculating the number of people reached through shelter assistance.



The provision of essential household and emergency shelter assistance by MRCS is crucial for numerous community members whose homes damaged due to cyclone, actively facilitating the restoration of their home. (Photo: MRCS)

Additionally, recognizing the impact of Cyclone Mocha on community centres (mosques, churches, temples, monasteries and orphanages), 106 tarpaulins have been distributed to 31 such facilities that were damaged by the cyclone.

⁵ For indicators marked as 'n/a' (**non-applicable**), the associated activities or distribution of items will be entirely supported by other partners. As such, only the federation-wide reach for these activities will be reported.

International procurement for essential household items such as tarpaulin (7,100 units), blankets (3,600 units), and shelter tool kits (1,500 units) is in the shipment stage. Local procurement procedures for essential household items and kitchen sets have been consistently followed.

 Livelihoods	Federation Wide Target	25,000 people
	Female: 13,000	Male: 12,000
	Secretariat Target	5,000 people
	Female: 2,600	Male: 2,400

Objective: *To provide essential basic needs assistance to most affected households and meet their early recovery needs through the provision of cash grants and cash for work.*

Key indicators:	Indicator	Secretariat Target	Secretariat Reach	Fed-Wide Reach
		<i>Number of people reached with food assistance</i>	n/a	n/a
	<i>Number of people reached with conditional cash grant (livelihood)</i>	5,000	0	0
	<i>Number of people provided with livelihood and management training</i>	n/a	n/a	0

When the cyclone hit, MRCS stepped in to provide the community with essential food items. Recognizing that many in the affected community had lost their homes and/or their primary source of income, especially from fishing, MRCS initiated the distribution of food packs to help them sustain themselves until they could regain their livelihoods.

The distributed items included noodle packets, chicken sausages, fish cans, and bottled water, all aimed at supporting households severely impacted by the cyclone.

Since 15 May 2023, MRCS has provided 16,540 noodle packs, 1,654 chicken sausages, 625 fish cans, and 6,327 bottles 1-liter drinking water, reaching a total of 8,413 people in the regions of Rakhine, Magway, Bago, and Mandalay. In an additional humanitarian effort to support individuals seeking refuge in monasteries and orphanages, MRCS has also extended the distribution of food items (rice bag and fish can) to 31 centres. It's important to note that the number of people in these centres is continually changing, and as a result, they are not included in the total number of people reached.

Further to support livelihoods needs, MRCS is planning to provide a conditional cash grant (approximately CHF 180 per household) for livelihood assistance to 1,000 HHs (5,000 people) in the first quarter of 2024.



Multi-purpose Cash

Federation Wide Target	25,000 people
Female: 13,000	Male: 12,000
Secretariat Target	17,500 people
Female: 9,100	Male: 8,400

Objective: *To address immediate basic needs and contribute to the increased purchasing power of targeted vulnerable households through the provision of multipurpose cash grants.*

Key indicators:	Indicator	Secretariat Target	Secretariat Reach	Fed-Wide Reach
	<i>Number of households provided with multipurpose cash grants to address their basic needs</i>		4,000	2,009

As of the reporting period, a total of 451 million MMK or CHF 193,930 in Multipurpose Cash Grants has been disbursed to 2,328 households in Rakhine state. Out of this total, 2,009 households are recipients of the IFRC Emergency Appeal, while 319 households are recipients of support from the German Red Cross. The overall household target (Federation Wide target) for MPCG is 5,000, with the IFRC Emergency Appeal specifically aiming to reach 4,000 households. MRCS has achieved 46.6 per cent of the overall target.

Each household will receive 200,000 MMK (CHF 85), a calculated amount considering the cost of living, shelter materials, and the Survival Monthly Expenditure Basket (SMEB). The SMEB food calculation served as the foundation, with other SMEB consumption sectors adjusted proportionally. To facilitate distribution, the SMEB was rounded to the nearest MMK 5,000.

MPCG in Rakhine

Since September 2023, MRCS has actively participated in the process of selecting recipients for cash assistance in Rakhine state, identifying a total of 3,545 households across five townships to receive this support.

The initial distribution occurred in four townships within the Sittwe district of Rakhine State, spanning from 12 to 31 October 2023. Despite the initial plan to assist 3,545 households in five townships, MPCG was successfully extended to 2,328 households within the specified timeframe for MPCG. In collaboration with the financial service provider under a framework agreement with MRCS, MPCG was delivered using a cash in envelope system at selected distribution centres. However, external circumstances caused distribution delays beyond the timeframe of the greenlight to implement the activities from the state authorities. To address this, a new green light from local authorities is required to support the remaining 1,195 households.

A Post Distribution Monitoring (PDM) activity involving 310 recipients in Rakhine was successfully completed on 15 November 2023. This PDM included Focus Group Discussions and Interviews to gather feedback and insights. The report from this PDM will be shared as soon as it is finalized and ready for dissemination.



MPCG distribution in Rakhine State. (Photos: MRCS)

Adding to the complexity, the situation and security status in Rakhine remain dynamic. This presents an additional challenge to implementing the activity plan and obtaining greenlights from local authorities to access targeted areas. MRCS consistently engages with authorities to advocate for and ensure that assistance reaches the affected population.

PDM for MPCG in Rakhine

The Post-Distribution Monitoring (PDM) for the MPCG in Rakhine was completed on 15 November 2023. This monitoring involved 310 participants from 15 villages in 4 wards, of whom 55 per cent were daily wage earners and 44 per cent were aged between 31 and 49 years. The PDM utilized KoBo surveys, focus group discussions, and interviews to gather insights into the experiences of the MPCG recipients.

According to the survey results, 66 per cent of the respondents had already received cash or other forms of support from different organizations or groups. Among these recipients, 21 per cent received less than 50,000 MMK (CHF ~20), and 51 per cent received between 50,001 and 100,000 MMK (CHF 20 – 40). The survey revealed that 78 per cent of the respondents used the cash primarily for purchasing food, while 29 per cent spent it on kitchen items. Additionally, 9 per cent allocated the funds for house reconstruction. Only 18 per cent planned to use the cash for medical and treatment purposes, and 12 per cent for their children's schooling.

The survey and focus group discussions pointed out a high satisfaction level with the Myanmar Red Cross Society's response activities. However, they also highlighted other significant challenges faced by the community, including water scarcity and limited access to healthcare and income opportunities.

Key recommendations from the PDM include the need for direct cash assistance distribution in villages to alleviate transportation difficulties to and from distribution centres, expanding the number of recipients, and implementing a more tailored approach to meet the diverse needs of different communities. Overall, the PDM highlighted the critical role of the cash assistance program in addressing the immediate needs of those affected by the cyclone in Rakhine.

MPCG in Magway

The assessment for MPCG recipient selection in Magway Region took place from 7 to 8 October 2023. Information was collected from a total of 1,503 households across ten villages with the invaluable support of 32 volunteers and six staff members from the MRCS operation team. During this assessment, the community was sensitized on the targeted households selection criteria, the selection process, and the cash assistance procedure. Notably, community leaders actively participated in the data collection process through the MRCS' community engagement and accountability (CEA) approach.

Currently, the MPCG is ongoing in Magway. The result will be reported in the next report.

Community feedback during the data collection process was positive, highlighting appreciation for the transparency and neutrality demonstrated by Red Cross volunteers and staff throughout the assessment. More detail for community feedback under the CEA section.


Story from the field

Saw Hla Thein, a 35-year-old breastfeeding mother, resides in Nat Taung Village, Ponnakyun Township, Rakhine State, with a family comprising seven members. Two family members are employed at a local tea shop, and two children are enrolled in school. Saw Hla Thein supports her family by selling snacks, particularly folded bread, to generate income. However, their lives took a devastating turn when Cyclone Mocha wreaked havoc, causing a collapse of their means of sustenance.

Saw Hla Thein and others from her village were provided with support from the Myanmar Red Cross. Expressing gratitude for a lifeline in the form of a cash grant from the Myanmar Red Cross, Saw Hla Thein outlines her plans for the assistance. She intends to allocate the funds towards medical expenses for her children, prioritizing their health and well-being. Additionally, a portion of the grant will be directed towards securing food for her family, addressing their immediate needs.

Compounding her challenges, Saw Hla Thein currently finds herself without a permanent residence, relying on the generosity of someone else's house for shelter. This precarious situation forces her to occasionally borrow food from her parents to alleviate the persistent issue of family hunger.

In the face of these adversities, Saw Hla Thein remains resilient, grateful for the support received, and determined to rebuild her life for the sake of her family's well-being.

 Health & Care (Mental Health and psychosocial support / Community Health / Medical Services)	Federation Wide Target	37,500 people
	Female: 19,500	Male: 18,000
	Secretariat Target	22,500 people
	Female: 11,700	Male: 10,800

Objective: Reduce morbidity and mortality through the direct response, preparation, and prevention of emerging health risks in cyclone-affected communities in targeted locations in Myanmar.

Key indicators:	Indicator	Secretariat Target	Secretariat Reach	Fed-Wide Reach
		Number of people reached with contextually appropriate health services	22,500	8,062
	Number of people reached with primary health care services and/or referral to public health institutions ⁶	n/a	n/a	1,845
	Number of people trained in First Aid/Emergency Response and Ambulance service	100	0	236
	Number of LLINs (long-lasting insecticide-treated nets) distributed	7,000	2,780	2,780
	Number of people reached with MHPSS services	n/a	n/a	0
	Number of people trained in MHPSS	50	0	25

Mobile health clinics, first aid and ambulance service

In response to Cyclone Mocha, MRCS deployed two teams to Rakhine to operate and support its mobile clinics. The service, which commenced on 17 May 2023, enlisted the assistance of 11 volunteers providing general physician services, minor surgeries, antenatal care, advanced-level first aid, and the distribution of clean delivery kits. The mobile clinic team, comprising a medical doctor, two registered nurses, a health officer, a health promoter, a clinic assistant, and health-focused trained volunteers, conducted consultations at 19 different locations in Rakhine. This effort reached 1,826 individuals (671 males, 1,155 females, and 21 per cent children). Throughout the reporting period, the Sittwe mobile clinic team covered 27 locations, including 6 camps, 13 wards, and 8 villages, supported by the Norwegian Red Cross.

⁶ This includes mobile health clinics, referral to public health institutions, emergency first aid and ambulance service.

Following the cyclone, 3 individuals (all male) received first aid and ambulance services, while 4 people (3 males and 1 female) were referred to public health institutions.



MRCS Mobile Clinic team providing primary healthcare assistance to affected community in Rakhine State. (Photo: MRCS)

Distribution of mosquito nets

In addition to providing primary care assistance through a mobile health clinic, MRCS distributed 2,780 family-sized long-lasting insecticidal nets (LLIN) to 1,980 households, benefiting a total of 8,062 individuals. The distribution of these mosquito nets is important as the majority of households have been damaged due to the cyclone. Recognizing the vulnerability of the affected population to the spread of vector-borne diseases, MRCS has strategically prioritized the provision of LLINs as a preventive measure.

The significance of mosquito nets extends beyond the immediate shelter needs, addressing a crucial aspect of public health in disaster-affected areas. With damaged housing structures leaving communities exposed to potential vector-borne diseases, the distribution of LLINs serves as a protective barrier, reducing the risk of illnesses transmitted by mosquitoes.

Capacity building

Emergency Medical Response training for 27 male RCVs from Magway took place in Yangon from 14 to 16 October 2023. These volunteers, actively participating in emergency first aid and ambulance services in the Salin Township, acquired valuable skills to enhance the effectiveness and efficiency of emergency ambulance services in their local communities.

29 RCVs from various Rakhine State townships participated in First Aid Instructor Training from 2 to 9 October 2023, which aimed to equip them to become effective first aid instructors. This would enable them to provide first aid services and conduct first aid training in their respective communities. This training was funded by the German Red Cross.

From 21 to 23 October 2023, six Basic First Aid (Multiplier) training sessions, funded by the German Red Cross, were conducted at Sinphyukyun, Magway by Sinphyukyun Red Cross Volunteers who had previously undergone First Aid

instructor training. A total of 180 students (72 males and 108 females) attended these sessions, providing them with knowledge about the Red Cross and basic first aid skills during emergencies.

MHPSS service including training for RCV

To prepare Red Cross Volunteers (RCVs) to support the affected community, 25 RCVs from the Rakhine State Red Cross attended Mental Health and Psychosocial Support (MHPSS) and Psychological First Aid (PFA) Training at the Royal Sittwe Hotel from 14 to 16 October 2023. This training, supported by the Danish Red Cross, equipped RCVs to provide PFA support to community groups. MHPSS activities for the affected communities will commence in the upcoming months.

 Water, Sanitation and Hygiene		Federation Wide Target		37,500 people
		Female: 19,500		Male: 18,000
		Secretariat Target		22,500 people
		Female: 11,700		Male: 10,800
Objective:	<i>Communities have increased access to affordable, appropriate, accessible, safe and potable water, sanitation, and hygiene services.</i>			
Key indicators:	Indicator	Secretariat Target	Secretariat Reach	Fed-Wide Reach
	<i>Number of people reached with essential WASH items⁷</i>	22,500	6,985	12,586
	<i>Number of hygiene parcels distributed</i>	1,500	1,500	2,772
	<i>Number of hygiene kits distributed</i>	n/a	n/a	251
	<i>Number of individual hygiene kits distributed</i>	n/a	n/a	2,287
	<i>Number of dignity kits distributed</i>	1,500	1,500	4,503
	<i>Number of 20 L jerry cans distributed</i>	3,500	2,238	2,238
	<i>Number of litres of safe drinking water distributed (cumulative)⁸</i>	n/a	n/a	982,507
	<i>Number of people reached by hygiene promotion activities in the response period</i>	5,000	670	1,989
<i>Number of constructed household sanitation facilities</i>	150	0	0	

In the aftermath of Cyclone Mocha in Rakhine State, approximately 80 per cent of the infrastructure in Sittwe and surrounding areas was severely damaged, resulting in a complete breakdown of the electricity and

⁷ The total number of people is calculated based on recipient list. Some households received assistance with multiple items therefore, the number of items distributed does not directly correspond to the number of people reached.

⁸ As the distribution of water involves multiple logistical elements, it is not possible to segregate the total volume of water distributed through support from Federation-wide or Secretariat. This activity was also supported by ICRC.

telecommunication systems due to the forceful winds. The people of Sittwe were heavily reliant on domestic and drinking water from artisan wells and water storage lakes. However, the absence of electricity rendered the water from artisan wells inaccessible, and the water from the lakes became unsuitable for consumption or daily use. Consequently, there was an urgent need for a safe water supply in the community.

Responding promptly, the MRCS's Rakhine Operation Management Unit, stationed in Sittwe, initiated the repair of tube well pumps stored in the warehouse immediately after the cyclone on 15 May. The Rakhine Operation Management Unit and the Rakhine Red Cross Supervisory Committee commenced water distribution, marking one of the earliest response activities starting from 17 May 2023, in Sittwe. Initially, the focus was on distributing water for domestic use, and this effort was extended across Sittwe and neighboring areas by RCVs and MRCS staff.

A specialized MRCS WASH team, comprising 10 experts, actively participated in water distribution and conducted assessments of Cyclone Mocha's impact on WASH needs.

In total, 982,507 litres of drinking water and 19,000 litres of water for domestic use were distributed to 50,042 households (250,210 people) from 15 May 2023 throughout Rakhine state. This assistance spanned 261 wards, 49 villages, 16 camps, and other locations, including the Nursing school and General Hospital, ensuring a safe water supply. The water distribution activity in Rakhine concluded on 15 July 2023. Additionally, to facilitate the storage and transportation of water from the source to their homes, 20L Jerry Cans have been provided to 2,238 households. The distribution of Jerry Cans was conducted together with the distribution of other essential hygiene items.



MRCS providing crucial safe drinking water to the community affected by Cyclone Mocha in Rakhine state. (Photo: MRCS)

Overall, 12,586 people from 5,685 households were assisted with hygiene items, encompassing hygiene kits, hygiene parcels, individual kits, and dignity kits. 2,287 individual kits and 4,503 dignity kits were distributed together with the hygiene parcel. The allocation of individual and dignity kits was based on the specific needs of each family. If a household included a woman, a dignity kit was provided, while an individual kit was given if a man was present. For households consisting of both men and women, both items were included in the distribution.


Individual hygiene kits are for one person that contains common hygiene items such as soap, toothbrush, toothpaste, and a towel, along with male-specific items like a male Longyi, underwear, T-shirt, and a razor blade. It is important to note that MRCS refers to the hygiene set specific to females as a Dignity Kit, thus being reported

under WASH section. The dignity kit comprises common hygiene items as mentioned earlier, along with female-specific items like menstrual pads, a female Longyi, T-shirt, and underwear.

A Hygiene Kit provides enough supplies for a week, whereas the Hygiene Parcel offers a month's supply of hygiene items for a family. Both kits include sanitary napkins, toothbrushes, toothpaste, towels, bath soap, laundry soap, tissue, detergent powder, plastic cups, and a comb. MRCS uses a selection matrix to determine the specific types of items each household will receive.

Additionally, 1,989 people were educated and trained on critical topics related to handwashing and diarrhea prevention. Recognizing the importance of these subjects in promoting public health and preventing the spread of diseases, MRCS conducted educational sessions, disseminating Information, Education, and Communication (IEC) materials along with key messages, particularly focusing on handwashing and open defecation.

The construction of 550 latrines in Rakhine State will commence in the upcoming months, with support from the IFRC Emergency Appeal, Swedish Red Cross, and various other contributing partners.

 Protection, Gender and Inclusion	Federation Wide Target	20,000 people
	Female: 10,400	Male: 9,600
	Secretariat Target	10,000 people
	Female: 5,200	Male: 4,800

Objective: *Ensure that DAPS for all is considered in the response through the strengthening of MRCS PGI mechanisms and capacities inclusive of PGI mainstreaming in each technical sector and PGI specific activities focusing on inclusion and protection.*

	Indicator	Secretariat Target	Secretariat Reach	Fed-Wide Reach
Key indicators:	<i>Number of RCRC staff and volunteers trained on protection, gender, and inclusion</i>	100	TBC	36
	<i>Number of community members who received basic PGI messages</i>	10,000	TBC	2,828

In Rakhine State, specifically in the townships of Sittwe, Rathaedaung, Kyuaktaw, and Buthidaung, a comprehensive Risk Awareness and Safer Behaviour (RASB) awareness session was conducted from August to October 2023. This outreach effort encompassed 94 awareness sessions, reaching a total of 2,828 individuals from schools, villages, and IDP camps. The sessions were instrumental in disseminating vital information on risk awareness and promoting safer behaviour in targeted areas. As part of these awareness sessions, various Information, Education, and Communication (IEC) materials were distributed during the awareness sessions. This included the dissemination of 166 posters, 3,205 handbooks, 432 drawing books, and 432 drawing pencil boxes. These materials were strategically utilized to enhance understanding and promote safer practices in the community.

In a parallel effort to strengthen MRCS's policies and enhance awareness and prevention measures, a training program titled "MRCS Policies, Awareness, and Prevention Training (1/2023)" was conducted in Magway. The training spanned three days, from 8 to 10 November 2023, with the participation of 32 RCVs and 4 staff members from the Magway Region.

The training covered crucial topics such as Safety and Security Guidelines, Safety and Security Management System, incident reporting and analysis, Child Protection Policy, Grievance Procedure, and Social Media guidelines. This

initiative aimed to equip participants with the necessary knowledge and skills to uphold and implement MRCS policies effectively, contributing to a safer and more secure operational environment.



RASB Session for the community from Nat Taung Village Ponnagyun township, Rakhine state on 15 October 2023 (Photo: MRCS)



Community Engagement and Accountability

Federation Wide Target	37,500 people
Female: 19,500	Male: 18,000
Secretariat Target	22,500 people
Female: 11,700	Male: 10,800

Objective: *Ensure the operation is integrating meaningful community participation, timely, open, and honest communication, and mechanisms to listen, respond to and act on feedback to collaboratively understand and address community needs, priorities, and the context. Aim to implement Movement-wide commitments and minimum actions for CEA in emergencies throughout the sectors and operation to ensure a transparent, participatory and accountable response.*

Key indicators:	Indicator	Secretariat Target	Secretariat Reach	Fed-Wide Reach
	<i>Methods were established to communicate with communities about what is happening in the operation.</i>	Yes	Yes	Yes

<i>Number of responses received from community members through feedback mechanism⁹</i>	n/a	n/a	68
<i>Number of staff, volunteers and leadership trained on community engagement and accountability</i>	100	0	72

Before the cyclone made landfall, community volunteers and RCVs collaborated to facilitate the distribution of early action and IEC materials concerning cyclones and pre-landfall precautions. Key messages focusing on the risks associated with cyclones and guidance for mitigation and preparedness were effectively conveyed to the community before the cyclone's landfall. MRCS volunteers played a crucial role in outlining detailed action plans to be followed before, during, and after the cyclone. The use of reliable communication channels, such as the Restoring Family Links (RFL) hotline, was emphasized during the information-sharing process.



MRCS volunteers placing Cyclone Mocha precautionary IEC materials days before its arrival, strategically visible to the community. (Photo: MRCS)

In October 2023, a feedback mechanism for MPCG assistance was initiated in Rakhine state, ensuring active community involvement in the selection process. When announcing MPCG recipient names in their respective villages, a thorough explanation of the criteria was provided, and the community was given seven days to provide feedback.



IFRC secretariat joined MRCS team on a field visit in Rakhine State. (Photo: MRCS)

The Community Engagement and Accountability (CEA) coordinator from the PMER Unit at MRCS HQ responded to a total of 68 calls, with 58 originating from Rathaedaung township, 8 from Kyauktaw township, and 2 from Ponnagyun township. Common concerns revolved around community members expressing their desire to understand why they were not included in the recipient list, citing their experience of being affected by Cyclone Mocha and their urgent need for assistance. Prior to MPCG distribution, an assessment survey was conducted in the affected area. MRCS uses a selection matrix that assesses several criteria of households including, the number of family members in a household, the severity of damage to a house and household income. Only households that score three and above are included in the recipient list.

The experience revealed challenges, including language barriers in initiating the feedback mechanism, emphasizing the importance of providing comprehensive explanations of the selection criteria during both the assessment and announcement of the recipient list.

⁹ The feedback mechanism is led by the MRCS and is supported by all partners, including IFRC. As such, it is reported exclusively as a Federation-wide reach.

In terms of capacity building, a one-day CEA Initiation training occurred in Sittwe on 8 September 2023, involving 40 participants, including staff and volunteers. Another CEA training session with 32 participants was conducted in Sinphyukyun, Magway Region on 1 October 2023. These training sessions aimed to provide a comprehensive understanding of CEA concepts, feedback mechanisms, and their practical application, preparing volunteers for effective community engagement and accountability during humanitarian assistance activities.

 Migration and Displacement	Federation Wide Target	1,500 people
	Female: 780	Male: 780
	Secretariat Target	1,500 people
	Female: 780	Male: 780

Objective: *Ensuring access to basic services: Activities take the needs and vulnerabilities of all displaced people into account, ensuring that all services are accessible to them, irrespective of their legal status or any other category.*

Key indicators:	Indicator	Secretariat Target	Secretariat Reach	Fed-Wide Reach
	<i>Number of migrants and displaced persons reached with services for assistance and protection</i>	1,500	0	0

MRCS is actively engaging with Red Cross Volunteers to facilitate Restoring Family Links (RFL) services. They are equipping these volunteers with the necessary tools and communication channels to assist family members, particularly those who have been displaced, in reconnecting with their loved ones. The Red Cross Volunteers had received briefings and orientations, with the support of ICRC, to effectively carry out RFL interventions.

As of 17 November 2023, no RFL activities were implemented as no requests were made to MRCS.

 Risk Reduction, climate adaptation and Recovery	Federation Wide Target	25,500 people
	Female: 13,000	Male: 12,000
	Secretariat Target	15,000 people
	Female: 7,800	Male: 7,200

Objective: *The MRCS influences the decision at the local and national level to strengthen the resilience of communities and raise awareness about climate change with the support of the IFRC.*


Key indicators:	Indicator	Secretariat Target	Secretariat Reach	Fed-Wide Reach
	<i>Number of people reached by climate adaptation programming</i>	15,000	0	0

In light of the aftermath of Cyclone Mocha and the impending monsoon season, it is crucial to provide communities with clear and concise instructions on how to prepare for potential future climatic disasters. In order to enhance

community preparedness and build their capacity, Enhanced Vulnerability and Capacity Assessment will be implemented in order to formulate plans for risk reduction and locally led adaptation aiming at strengthening affected communities resilience in the coming month.

 Environmental Sustainability	Federation Wide Target		35,000 people	
	Female: 18,200		Male: 16,800	
	Secretariat Target		35,000 people	
	Female: 18,200		Male: 16,800	
Objective:	<i>Ensuring that any harm done to the local environment as a result of the interventions is minimised and mitigated.</i>			
Key indicators:	Indicator	Secretariat Target	Secretariat Reach	Fed-Wide Reach
	<i>Number of people staff and volunteers trained for "Green Response"</i>	50	0	0
No update for this section in this reporting period.				

Enabling approaches

 National Society Strengthening	Objective:			
	<i>To strengthen the institutional capacity and preparedness of the MRCS from the branch level to NHQ, including by increasing the MRCS pre-positioning stock capacity to respond to the immediate humanitarian needs of affected people for upcoming disasters. This objective will be achieved by aligning the operation's actions to the National Society's longer-term NSD priority of promoting branch development as a prerequisite to decentralisation, with a strong focus on capacity building.</i>			
		Indicator	Actual	Target
	Key indicators:	<i>National Society has successfully articulated short-term emergency and NSD objectives together with long-term NSD objectives</i>	TBC	Yes
<i>National Society has identified learning mechanisms to assess the impact of the operation</i>		Yes	Yes	
<i>Number of branches renovated and/or constructed</i>		0	1	
<i>Number of MRCS warehouses constructed and/or renovated</i>		0	2	

	<i>Number of volunteers and staff involved in the response operation that have increased their skills in response and management of operations</i>	265	300
--	----------------------------------------------------------------------------------------------------------------------------------------------------	-----	-----

A series of capacity building and training sessions were completed as of 17 November 2023, as set out further below.

- 1. Communication training:** A three-day training program held at Sittwe Hotel from 5 September to 7 September 2023 focused on enhancing the communication skills of 28 RCVs in Rakhine State. The training covered areas such as social media use, media interactions, and public communication, alongside MRCS guidelines and policies.

Communication training was also conducted for RCVs in the Magway Region, with 25 participants (17 males and 8 females) aged between 20 and 50 attending from various townships and towns. The training took place from 29 September to 1 October 2023 and was funded by the German Red Cross. Participants represented townships such as Magway, Pwintbyu, Chauk, Minbu, Taungdwingyi, Thayat, Myothit, Mindon, Salin, Pakokku, Sidoktaya, Aunglan, Saku, Pauk, Saw, Salay, Yenangyaung, Seikphyu, Yaysakyo, and Sinphyukyun.

The communication training has had a significant impact, enhancing participants' communication skills and incorporating modern tools, thereby improving their ability to interact effectively. This development not only enhances the organization's reputation but also builds trust, bolstering its overall effectiveness in serving the community.

- 2. Information Management training:** The Information Management Training (Data Management in Excel) was conducted by the Information Management Training (IMT) Unit from 24 to 26 October 2023, in Sittwe, Rakhine State. The primary aim of this training initiative was to augment the capabilities of Red Cross Volunteers in the realms of data management, processing, analysis, and presentation utilizing Microsoft Excel tools and techniques. 20 RCVs and 3 Staff from the Operation Management Unit based in Rakhine State participated in this training. The training program covered basic knowledge of Microsoft Excel tools for data management processes, including data collection, validation, visualization, and statistical summary reporting using pivot tables.

Several challenges and gaps were identified during the training, firstly, a shortage of computers, hindering the seamless progress of participants. Additionally, the several active volunteers are lacking basic digital skills, impeding their ability to keep pace with the training. Consequently, the facilitator team found themselves investing extra time in assisting individuals facing these challenges. Addressing these limitations will be crucial to optimizing the effectiveness of future training.

- 3. CEA training:** See details under the CEA section.
- 4. PGI training:** See details under the PGI section.
- 5. First Aid training:** See details under the Health and Care section.
- 6. MHPSS training:** See details under the Health and Care section.

Due to the situation in Rakhine State, PMER training and MRCS Policies, Awareness, and Prevention training for staff and RCVs planned for November or December 2023 have been postponed.

Infrastructure strengthening

Several renovation and construction projects are currently in progress, including the renovation of the Rathaedaung township Red Cross Office with funding from the German Red Cross (GRC), the renovation of 14

water storage tanks in Rathaedaung township supported by the Swedish Red Cross (SwRC), and the renovation of the Rakhine State Red Cross Office (Sittwe), which is also funded by the SwRC. Additionally, the ongoing renovation of the General Purpose Sittwe Warehouse is being supported by the GRC and the Danish Red Cross (DRC).

The construction of the Red Cross Office for the Rathaedaung Branch began on 1 November 2023. The current progress is at 30 per cent which includes the completion of foundation works, including short columns, retaining walls, installation of reinforcement for ground beam.



Ground inspection of the construction of Rathaedaung Branch Office on 12.11.23 (Photo: MRCS)

Procurement and logistics

List of ongoing local procurement

No	Item Name	Quantity
1	Small First Aid Kit	5,544
2	Advanced First Aid Kit	588
3	Hygiene Kit with 20 L bucket	3,300
4	Hygiene Parcel	5,700
5	Dignity Kit	6,400
6	Individual Hygiene Kit	5,267
7	Family Kit	1,800
8	Jerry Can 10 Litre	8,700
9	Kitchen Set	3,000
10	PSS kit	500
11	Tarpaulin	2,100
12	Mosquito net	2,100
13	Blanket	2,100
14	Clean Delivery Kit	850
15	ORS	10,000
16	Water Filter Ceramic	750

Starting from the week prior to landfall, the MRCS logistics department has been providing crucial supply chain and procurement services to the operational teams. Humanitarian supplies were dispatched from central warehouses to key areas of need, and multiple procurement processes have been engaged to replenish and dispatch stock to communities in need. Procurement is being carried out both locally and internationally. As for

the international procurement, there are currently 1,500 shelter tool kits, 3,608 blankets, 7,000 mosquito nets, and 7,100 tarpaulins prepared and pending shipment. Details of the local procurement are listed above.

Lessons learned

As the operation approaches its midpoint, MRCS will conduct a lesson learned workshop in December 2023 to comprehensively review the current status of the operation. This workshop will specifically focus on evaluating the sustainability of response activities, taking into account the emerging challenges such as the escalation of clashes throughout the country. The aim is to strategize MRCS's next steps to ensure the provision of assistance to the affected people.



Coordination and Partnerships

Objective:	<i>Strengthen coordination within the IFRC membership and the Movement to achieve technical and operational complementarities while increasing cooperation with external partners.</i>		
-------------------	----------------------------------------------------------------------------------------------------------------------------------------------------------------------------------------	--	--

Key indicators:	Indicator	Actual	Target
	<i>Movement coordination mechanism is described and active</i>	Yes	Yes

In coordination with IFRC and MRCS, the ICRC provided transportation support for health services and also support for a water treatment plant for the WASH services for the needs of the community from Rakhine.

The IFRC Network is working in coordination and complementarity to ensure an effective and efficient response to the cyclone. MRCS led and IFRC jointly facilitated membership coordination meetings to brainstorm on operational strategy and align efforts through collective and collaborative support. This includes the coordinated development of the Federation-wide Emergency Appeal which is based on a response plan jointly drafted and reviewed by all Movement components following the priorities identified by the Myanmar Red Cross Society. The response plan adopts a comprehensive approach underlining the support received by non-Federation stakeholders. This approach will also include Federation-wide monitoring and reporting framework to ensure common accountability and transparency.

MRCS has also been coordinating with the disaster management committees at the state and union level, in line with its mandate and for the purposes of its humanitarian response.



Shelter Cluster Coordination

Objective:	<i>The IFRC effectively performs its role as convener of the Shelter Cluster in case of natural disaster, by supporting the Myanmar Shelter/NFI/CCCM Cluster in complementarity with and assistance to the existing structure led by UNHCR.</i>		
-------------------	-------------------------------------------------------------------------------------------------------------------------------------------------------------------------------------------------------------------------------------------------	--	--

	Indicator	Actual	Target
--	------------------	---------------	---------------

Key indicators:	<i>Number of Rapid Response members deployed for the operation</i>	3	2
------------------------	--------------------------------------------------------------------	---	---

Since June, three Rapid Response members have been actively deployed remotely to enhance the coordination efforts of the Shelter/NFI/CCCM Cluster, in line with the IFRC's global role as co-convenor of the Shelter Cluster in situations of natural disaster. Among them, two RR members serve as the IM Coordinators for the North West region—supported by the American Red Cross and Netherlands Red Cross. Each IM Coordinator actively supported the cluster during different time periods, until 11 October 2023. Since then, the Global Shelter Cluster IM Officer from IFRC has been providing remote ad hoc support when it is required.

Additionally, the Deputy Shelter Cluster Coordinator, supported by the German Red Cross, has been providing valuable support since June. In this role, the Deputy Shelter Cluster Coordinator collaborates closely with the UNHCR National Cluster Coordinator, providing crucial expertise in natural disaster response operations and engaging in bilateral discussions with sub-national coordinators and OCHA, amongst other key stakeholders. The Deputy Coordinator also spearheaded the development of the Cyclone Mocha Shelter Cluster Advocacy Brief, as well as supported the remaining Cyclone Mocha needs and targets for the 2024 Humanitarian Planning Cycle. Simultaneously, leading the preparation of relevant IEC material for all Shelter Cluster partners. These materials will be distributed alongside emergency shelter kits, aiming to bolster the coping mechanisms of the affected populations.



Secretariat Services

Objective: *The IFRC effectively performs its role of supporting the MRCS and the wider network in the early action, response and recovery phases, with technical assistance, including through dedicated human resources, in the fields of HR, PMER, logistics, finance and administration, communications and advocacy, and security.*

	Indicator	Actual	Target
Key indicators:	<i>Number of Rapid Response members deployed for the operation</i>	2	2
	<i>Logistics department provides constant support to the National Society's logistics unit for replenishment and other procurement</i>	Yes	Yes

IFRC's Country Delegation (CD) response team collaborated closely with MRCS in formulating the response plan for the ongoing emergency. The IFRC Asia Pacific Regional Office (APRO) played a pivotal role by offering technical guidance and support to both the Country Delegation and MRCS. The IFRC CD maintained consistent communication with the Asia Pacific Regional Office's Partnership Resource Development (PRD) and finance teams, actively exploring funding opportunities for the emergency appeal and tracking pledges, including potential interest.

Throughout the reporting period, two Rapid Response members were deployed to bolster the Emergency Appeal operation. A PMER Officer and Deputy Operation Manager from the IFRC Secretariat office provide remote support, spanning from June to October 2023 for the PMER Officer and July to September 2023 for the Deputy Operation Manager. Unfortunately, both Rapid Response members were unable to obtain visas in time for on-site deployment.

To further strengthen the operation, the IFRC Country Delegation recruited two local staff members as Senior Operation Support Officers. One is stationed in Rakhine in the IFRC sub-delegation to closely assist MRCS in the area, minimizing the need for frequent travel to Rakhine. The other supports response activities outside of Rakhine.

Recognizing potential delays in procurement, the Logistics unit of IFRC APRO extended technical guidance and assistance to the Country Delegation. While MRCS maintains disaster preparedness stock in the country to address immediate needs, additional sourcing, both locally and internationally, is necessary to support and replenish the dispatched preparedness stocks outlined in the emergency appeal. The primary logistics challenges arise from obtaining import permits and tax exemptions for essential item imports.

Communications

IFRC Asia Pacific Regional Office works closely with the delegation in Myanmar to ensure timely, accurate and relevant information is shared with the public and other audience/stakeholder for Cyclone Mocha. Since the onset of the disaster, the IFRC has published these to support the operation:

- Key messages detailing the needs, status of the operations and other issues that need to be addressed
- Video of what we have done
- Infographic of the appeal document
- Press releases:
 - Before landfall: <https://www.ifrc.org/press-release/myanmar-red-cross-prepares-ahead-landfall-cyclone-mocha>
 - Cyclone Mocha: Access and time of the essence to help affected families in Bangladesh and Myanmar <https://www.ifrc.org/press-release/cyclone-mocha-access-and-time-essence-help-affected-families-bangladesh-and-myanmar>
 - Urgent support needed to prevent worsening impacts of Cyclone Mocha on health and livelihoods <https://www.ifrc.org/press-release/urgent-support-needed-prevent-worsening-impacts-cyclone-mocha-health-and-livelihoods>
- Photos: https://shared.ifrc.org/mycollections/index/_WA4xbpAE
- Exposure Story: [Rebuilding Hope Amidst the Devastation](#) which was published on IFRC website.

D. FUNDING

The donor response to date can be accessed [here](#). An interim financial report is attached at the end of this report.

Contact information

For further information specifically related to this operation, please contact:

At the Myanmar Red Cross Society:

- Prof. Dr. Htin Zaw Soe, Secretary General; email: htinzawsoe@redcross.org.mm
- Dr. Nyo Nyo Wint, Deputy Secretary General for Programmes and Operations, email: nyonyowint@redcross.org.mm
- Aye Aye Nyein, Director of Rakhine Operation Management Unit, email: ayeayenyein@redcross.org.mm

At the IFRC Country Delegation in Myanmar:

- Nadia Khoury, Head of Delegation, email: nadia.khoury@ifrc.org
- Rajeev K.C., Operations Manager, email: rajeev.kc@ifrc.org

At the IFRC Asia Pacific Regional Office in Kuala Lumpur:

- Alexander Matheou, Regional Director; email: alexander.matheou@ifrc.org
- Juja Kim, Deputy Regional Director; email: juja.kim@ifrc.org
- Joy Singhal, Head of Health, Disaster, Climate and Crisis unit; email: joy.singhal@ifrc.org
- Farah Nur Wahyuni Zainuddin, Operations Coordinator, email: Opscoord.SouthEastAsia@ifrc.org
- Rishi Ramrakha, Head of Global Humanitarian Service & Supply Chain Management; email: rishi.ramrakha@ifrc.org
- Afrhill Rances, Communications Manager; email: afrhill.rances@ifrc.org

At IFRC Geneva:

- Christina Duschl, Senior Officer Operations Coordination; email: christina.duschl@ifrc.org

For IFRC Resource Mobilisation and Pledges support:

- Maz Afiah, Regional Strategic Engagement and Partnerships Senior Officer, email: PartnershipsEA.AP@ifrc.org

For In-Kind Donations and Mobilisation table support:

- Nuraiza Khairuddin, Regional Logistics Manager; email: nuraiza.khairuddin@ifrc.org

For Performance and Accountability support (planning, monitoring, evaluation and reporting enquiries)

- Mursidi Unir, PMER in Emergencies Coordinator, email: mursidi.unir@ifrc.org

Reference documents



Click here for:

- [Emergency Appeal document](#)
- [Link to IFRC Emergency landing page](#)
- [Operational Strategy](#)

How we work

All IFRC assistance seeks to adhere the **Code of Conduct** for the International Red Cross and Red Crescent Movement and Non-Governmental Organizations (NGO's) in Disaster Relief, the **Humanitarian Charter and Minimum Standards in Humanitarian Response (Sphere)** in delivering assistance to the most vulnerable, to **Principles of Humanitarian Action** and **IFRC policies and procedures**. The IFRC's vision is to inspire, encourage, facilitate and promote at all times all forms of humanitarian activities by National Societies, with a view to preventing and alleviating human suffering, and thereby contributing to the maintenance and promotion of human dignity and peace in the world.

Emergency Appeal

INTERIM FINANCIAL REPORT

Selected Parameters			
Reporting Timeframe	2023/5-2023/11	Operation	MDRMM018
Budget Timeframe	2023/5-2024/5	Budget	APPROVED

Prepared on 19 Dec 2023

All figures are in Swiss Francs (CHF)

MDRMM018 - Myanmar - Cyclone Mocha

Operating Timeframe: 17 May 2023 to 31 May 2024; appeal launch date: 17 May 2023

I. Emergency Appeal Funding Requirements

Thematic Area Code	Requirements CHF
AOF1 - Disaster risk reduction	59,000
AOF2 - Shelter	1,045,000
AOF3 - Livelihoods and basic needs	793,000
AOF4 - Health	287,000
AOF5 - Water, sanitation and hygiene	441,000
AOF6 - Protection, Gender & Inclusion	15,000
AOF7 - Migration	0
SFI1 - Strengthen National Societies	224,000
SFI2 - Effective international disaster management	101,000
SFI3 - Influence others as leading strategic partners	20,000
SFI4 - Ensure a strong IFRC	515,000
Total Funding Requirements	3,500,000
Donor Response* as per 19 Dec 2023	1,947,090
Appeal Coverage	55.63%

II. IFRC Operating Budget Implementation

Thematic Area Code	Budget	Expenditure	Variance
AOF1 - Disaster risk reduction	688,880	51,324	637,556
AOF2 - Shelter	35,145	614,239	-579,094
AOF3 - Livelihoods and basic needs	0	0	0
AOF4 - Health	130,250	16,781	113,469
AOF5 - Water, sanitation and hygiene	114,935	2,741	112,194
AOF6 - Protection, Gender & Inclusion	0	0	0
AOF7 - Migration	0	0	0
SFI1 - Strengthen National Societies	0	0	0
SFI2 - Effective international disaster management	9,053	22,263	-13,210
SFI3 - Influence others as leading strategic partners	14,378	0	14,378
SFI4 - Ensure a strong IFRC	477,023	107,372	369,651
Grand Total	1,469,663	814,719	654,943

III. Operating Movement & Closing Balance per 2023/11

Opening Balance	0
Income (includes outstanding DREF Loan per IV.)	1,778,868
Expenditure	-814,719
Closing Balance	964,149
Deferred Income	145,836
Funds Available	1,109,985

IV. DREF Loan

* not included in Donor Response	Loan :	700,000	Reimbursed :	700,000	Outstanding :	0
----------------------------------	--------	---------	--------------	---------	----------------------	----------

Emergency Appeal

INTERIM FINANCIAL REPORT

Selected Parameters			
Reporting Timeframe	2023/5-2023/11	Operation	MDRMM018
Budget Timeframe	2023/5-2024/5	Budget	APPROVED

Prepared on 19 Dec 2023

All figures are in Swiss Francs (CHF)

MDRMM018 - Myanmar - Cyclone Mocha

Operating Timeframe: 17 May 2023 to 31 May 2024; appeal launch date: 17 May 2023

V. Contributions by Donor and Other Income

Opening Balance							0
Income Type	Cash	InKind Goods	InKind Personnel	Other Income	TOTAL	Deferred Income	
American Red Cross	447,238				447,238		
Australian Red Cross (from IFM Investors*)	31,086				31,086		
European Commission - DG ECHO	96,459				96,459		
Finnish Red Cross	146,608				146,608		
German Red Cross	17,460				17,460		
Hong Kong Red Cross, Branch of the Red Cross Socie	22,363				22,363		
Japanese Red Cross Society	30,764				30,764		
Norwegian Red Cross (from Norwegian Government*)	425,996				425,996		
On Line donations	35				35		
Red Cross of Monaco	9,646				9,646		
Spanish Government	0				0	145,836	
Swiss Red Cross	135,000				135,000		
The Canadian Red Cross Society (from Canadian Gov	104,551				104,551		
The Netherlands Red Cross (from Netherlands Govern	311,662				311,662		
Total Contributions and Other Income	1,778,868	0	0	0	1,778,868	145,836	
Total Income and Deferred Income					1,778,868	145,836	