

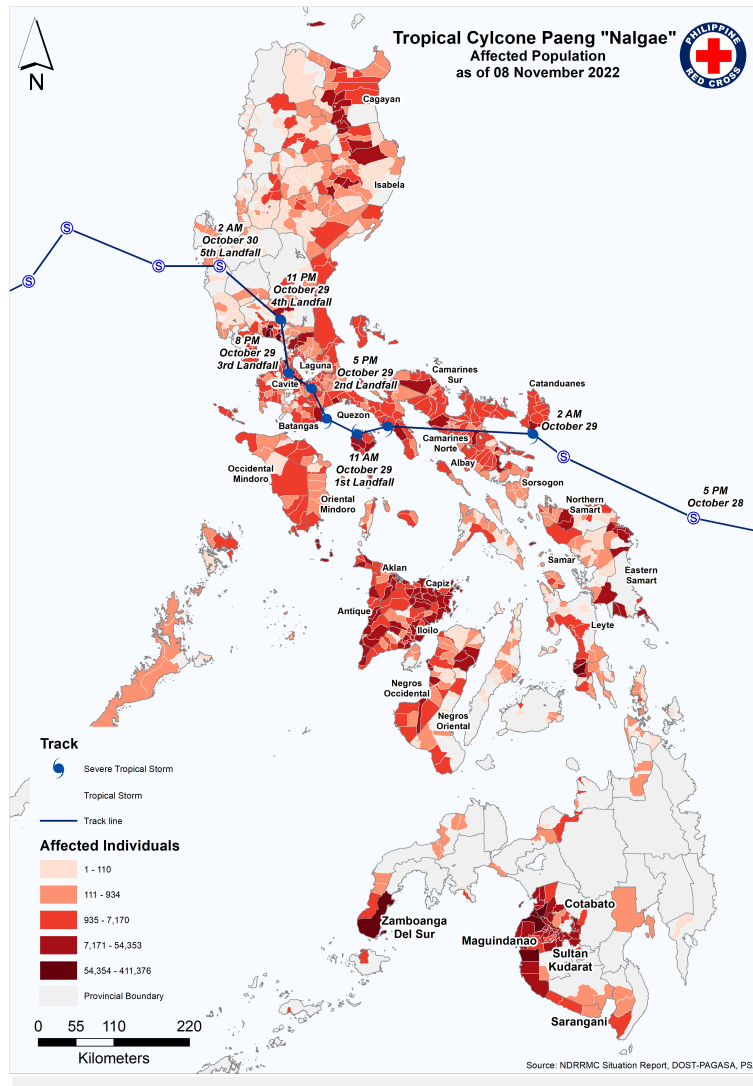


PRC and IFRC livelihood interventions assisted families affected by Severe Tropical Storm Paeng (Nalgae) in Antique province. Their farms and crops were totally washed out due to flooding (Photo: PRC)

Appeal: MDRPH050	Total DREF Allocation CHF 748,231	Crisis Category: Orange	Hazard: Cyclone
Glide Number: TC-2022-000352-PHL	People Affected: 59,822,377 people	People Targeted: 32,500 people	
Event Onset: Sudden	Operation Start Date: 2022-11-11	New Operational end date:	Total operating timeframe: 6 months
Targeted Areas:	Region III (Central Luzon), Region IV-A (Calabarzon), Region V (Bicol region), Region VI (Western Visayas), Region VII (Central Visayas), National Capital region (NCR)		

The major donors and partners of the IFRC-DREF include the Red Cross Societies and governments of Belgium, Britain, Canada, Denmark, German, Ireland, Italy, Japan, Luxembourg, New Zealand, Norway, Republic of Korea, Spain, Sweden and Switzerland, as well as DG ECHO and Blizzard Entertainment, Mondelez International Foundation, and Fortive Corporation and other corporate and private donors. The IFRC, on behalf of the PRC, would like to extend thanks to all for their generous contributions.

Description of the Event



What happened, where and when?

On 26 October 2022, the Philippine Atmospheric, Geophysical, and Astronomical Services Administration (PAGASA) reported the development of Tropical Depression (TD) "Paeng" from a previously identified Low Pressure Area.

The center of TD Paeng was located approximately 965 km east of Eastern Visayas, with maximum sustained winds near the center reaching 45 km/h and gustiness of up to 55 km/h. By 27 October 2022, it had intensified into a Tropical Storm (TS), with maximum sustained winds of 65 km/h near the center and gustiness reaching up to 80 km/h. It was moving west-southwestward at a speed of 10 km/h. Tropical Cyclone Wind Signal (TCWS) No. 1 had been raised in several areas, including Catanduanes, Albay, Sorsogon, Masbate (including Ticao and Burias Islands), Camarines Sur, the eastern portion of Romblon, Marinduque, Camarines Norte, Polillo Islands, the southern portion of mainland Quezon, as well as Eastern Samar, Northern Samar, Samar, Biliran, and the northern portion of Leyte.

On the following day, TD Paeng continued to intensify while maintaining a west-northwestward track. It moved closer to the Eastern Samar-Northern Samar and Sorsogon-Albay areas, with maximum sustained winds of 85 km/h near the center and gustiness of up to 105 km/h. TCWS No. 2 was raised in most areas of Eastern Visayas and Southern Luzon. In the evening, TD Paeng reached the status of a Severe Tropical Storm (STS).

On Friday, 29 October 2022, STS Paeng made its first landfall in Catanduanes, followed shortly by a second landfall in Camarines Sur. Later in the day, it made an additional four landfalls in Buenavista (Quezon), Santa Cruz



(Marinduque), Sariaya (Quezon), and Baliuag, Bulacan, totaling six landfalls across the country. TCWS No. 2 and No. 3 signals were raised in several areas, including Metro Manila. Eventually, on Saturday, 30 October 2022, it weakened into a tropical storm (TS) and exited the landmass of Luzon, curving southwestwards into the Philippine Sea.

In addition to the development of STS Paeng on the eastern border of the country, another weather system known as the shearline affected the Philippines concurrently. The shearline, also referred to as the tail end of the frontal system, occurs when two air masses with different properties (such as temperature and humidity) meet, leading to an increase in the number of thunderstorms and heavy rainfall in affected areas. This phenomenon was evident through the formation of massive cluster clouds in the Visayas region and the northern and western portions of Mindanao.

Along with the trough of STS Paeng, the shearline brought heavy rains to the country, resulting in flooding and rain-induced landslides, particularly in areas prone to these hazards and localities with significant antecedent rainfall. Most of the damage was attributed to flash floods and rain-induced landslides, particularly in Mindanao.

Notes:

Table 1: Affected Region and Population (Source: NDRRMC)

Picture 1: PRC, through IFRC, distributed relief items to affected population in Antique, Province (Photo: PRC)

AFFECTED POPULATION								
A total of 1,473,826 families or 5,982,377 persons were affected. Of which, 3,652 families or 17,202 persons were served inside 113 ECs and 62,050 families or 309,846 persons were served outside ECs:								
Affected Regions	AFFECTED			INSIDE ECs			OUTSIDE ECs	
	Brgy	Families	Persons	No. of ECs	Families	Persons	Families	Persons
TOTAL	10,579	1,473,826	5,982,377	113	3,652	17,202	62,050	309,846
Region 1	246	9,797	38,491	1	68	261	2	6
Region 2	758	89,567	331,721	2	23	74	29	105
Region 3	399	127,120	445,667	7	38	141	0	0
CALABARZON	2,343	256,332	1,052,028	64	2,397	10,700	207	867
MIMAROPA	679	53,162	217,573	0	0	0	0	0
Region 5	1,458	69,668	269,616	1	2	10	0	0
Region 6	2,822	458,333	1,773,525	3	19	71	38	148
Region 7	18	405	1,699	13	102	321	6	39
Region 8	596	106,475	398,480	1	30	55	0	0
Region 9	84	15,984	79,636	0	0	0	0	0
Region 10	49	1,355	6,104	0	0	0	0	0



Table 1

Picture 1

Scope and Scale

The most recent reports from the National Disaster Risk Reduction and Management Council (NDRRMC) - Sitrep #16 and the Department of Social Welfare and Development - Disaster Response Operations Monitoring and Information Center (DSWD - DROMIC) - Report #21, as of 5 November 2022, provided a comprehensive overview of the devastation caused by STS Paeng:

I. Number of people affected:

- A total of 1,473,826 families or 5,982,377 individuals were affected across 10,579 barangays in all 11 regions of the country, including Regions I, II, III, CALABARZON, MIMAROPA, V, VI, VII, VIII, IX, and X.
- Region VI, comprising Aklan, Antique, Capiz, Guimaras, Iloilo, and Negros Occidental provinces, witnessed the highest number of people affected, totaling 1,773,525 individuals or 458,333 families.
- CALABARZON, which includes Cavite, Laguna, Batangas, Rizal, and Quezon provinces, was the second most affected, with a total of 1,052,028 individuals or 256,343 families impacted.

II. Casualties and injuries:



- STS Paeng resulted in a significant number of casualties, primarily due to flooding, landslides, falling trees, and drownings.
- The reported casualties include 155 fatalities, 129 injuries, and 34 individuals reported as missing.
- The highest number of reported fatalities, 65 individuals, was recorded in the BARMM region

III. Pre-emptive evacuations:

- 355,431 people (100,701 families) were pre-emptively evacuated.

IV. People displaced inside and outside evacuations:

- Inside evacuation centers, 766,879 people (206,934 families) sought temporary shelter across 8,907 evacuation centers.
- 111,910 people (27,965 families) continue to take temporary shelter in 1,038 evacuation centers.
- Outside of evacuation centers, 1,507,665 people (484,193 families) temporarily stayed with relatives and friends.
- Currently, 904,528 individuals (326,277 families) are still staying with their relatives and friends.
- The majority of displaced individuals are concentrated in CALABARZON, Region VI, and BARMM.

V. Damaged to Houses:

- A total of 28,031 houses sustained damage, with 3,061 being fully damaged and 24,970 partially damaged.
- Among fully damaged houses, Region VI reported 722 cases, CALABARZON reported 683, and Region XII reported 409.
- Partially damaged houses numbered 8,817 in Region VI, 6,080 in CALABARZON, and 3,295 in Region V.

VI. Damage to agriculture:

- The Department of Agriculture estimated approximately PHP 2.827 billion (CHF 48 million) in damages to the agricultural sector. This affected 81,866 farmers and fisherfolks, with 80,722 hectares of agricultural land impacted.
- Main commodities affected include rice, corn, high-value crops, fisheries, livestock, and poultry.
- Region V reported the highest agricultural damage at PHP 924 million (CHF 15 million), followed by CALABARZON at PHP 726 million (CHF 12 million), and Region III at PHP 430 million (CHF 7.4 million).

VII. Damage to infrastructure:

- The estimated cost of infrastructure damage is PHP 4.174 billion (CHF 71 million).
- Livestock losses alone exceeded PHP 113 million (CHF 1.9 million).
- A state of calamity was declared in 520 cities/municipalities in Region II, CALABARZON, MIMAROPA, Region V, VI, IX, XII, and BARMM.

VIII. Devastation to social infrastructure as follows:

- 261 schools nationwide with recorded damage.
- 381 classrooms completely damaged, while 528 schools are currently serving as evacuation centers (reported by the Department of Education).
- 15 health facilities damaged, comprising seven hospitals, six barangay health stations, and two rural health units (reported by the Department of Health).
- 503 road sections and 119 bridges affected.
- Power interruptions/outages in 359 cities/municipalities, with power restored in 252 of them.
- Damaged water supply in 27 cities/municipalities, with 16 water supplies restored.
- 121 seaports were affected, leading to the cancellation of 412 domestic flights and 59 international flights.

IX. Damage to Agricultural and Fisheries Sector:

The agriculture sector sustained the biggest loss. According to Department of Agriculture bulletin #7, of the total damage and losses to agriculture due to STS Paeng, percentage distribution per commodity follows:

- 62.47 percent rice, 19.51 high-value crops, 7.06 percent fisheries, 4.93 percent agri-infrastructure, 4.74 percent corn, 1.27 percent livestock and poultry, 0.01 percent machinery and equipment, and 0.01 percent cassava.
- Rice crops were the most affected commodity. October is the month when the farmers start the rice harvesting and many fields were still not picked when floods submerged the crops.
- The rice, which is in its maturity stage, was blown due to strong winds. Farmers verbalized that 60 percent of the



farmlands can still be harvested but will be sold at a lower price due to low quality and wet grains.

- Fisheries is one of the main sources of livelihood in coastal areas, where the boats were washed away. In some of the areas, households depend on commercialized backyard gardening with high-value crops. Households reported that the gardening tools were washed out and damaged. Also, some of the livestock were drowned by floods.

IFRC Network Actions Related To The Current Event

<p>Secretariat</p>	<p>IFRC monitored STS Paeng since 26 October 2022 and coordinated with PRC, by attending the coordination meetings in preparations for landfall, support of the chapters' preparations and activation of EAP Typhoon. Furthermore, the IFRC activated the coordination mechanism with the in-country Participating National Societies (PNS), to keep them informed and updated on the situation, needs, and planned immediate response.</p> <p>Additionally, the IFRC coordinated with the UN System, through regular meetings among the IFRC Country Delegation and OCHA/ UNRCO, and shared information on the preparations, assessment and response. Regular discussions were also held with the ECHO office on the needs assessment outcomes and PRC-IFRC response plan. IFRC launched a series of meetings among the Shelter Cluster members, and the Shelter Cluster Coordinator actively participated in a series of meetings (ICCG, OCHA, stock preposition).</p> <p>Furthermore, facilitated an ECHO visit to the affected areas to witness the ongoing activities.</p>
<p>Participating National Societies</p>	<p>PRC worked with the IFRC in this operation. The ICRC and six National Societies were also present in the Philippines, namely: American Red Cross, Canadian Red Cross, Finnish Red Cross, German Red Cross, Netherlands Red Cross, and Spanish Red Cross.</p> <p>German Red Cross provided technical support for the EAPs (typhoons and floods) in Philippines. Technical support was provided throughout the process, starting from the development of EAPs. During STS Paeng development, the EAP for typhoon was activated.</p> <p>Additionally, the Finnish Red Cross and IFRC provided technical support on the EAP. The Netherlands Red Cross provided IM support via its 510 team. IFRC coordinated with the Canadian Red Cross Headquarter on the activation of the Emergency Disaster Assistance Fund (EDAF) Project, through which DREF replenishments are activated in support to emergency relief operations.</p>

ICRC Actions Related To The Current Event

ICRC contributed to the PRC overall Response plan for STS Paeng by supporting worst affected areas in Region IX, XII and BARMM (Zamboanga City, Cotabato City and Maguindanao). Assistance included Multi-Purpose Cash Grants, Household Items (HHI), WASH, Health, Psychosocial Support, child friendly spaces, hot meals, and operation cost, amounting to around CHF 200,000 and 1,500 HHI from the relief stocks.



Other Actors Actions Related To The Current Event

<p>Government has requested international assistance</p>	<p>No</p>
<p>National authorities</p>	<p>The Government of the Philippines led the response and assessment activities. The NDRRMC was on Red Alert status since 27 October 2022 and held several operations and briefings prior to Nalgae's landfall on 29 October 2022.</p> <p>While the NDRRMC initially recommended to declare a nation-wide state of calamity, which would allow the government to use the quick response funds for relief, rehabilitation and other disaster-related services, as well as reprogram funds for the repair and upgrading of public infrastructure and facilities.</p> <p>According to NDRRMC Sitrep #16 as of 5 November 2022:</p> <ul style="list-style-type: none"> - 520 cities/municipalities were declared under the State of Calamity in Region II, CALABARZON, MIMAROPA, Region V, VI, IX, XII and BARMM. - PHP 159 million (CHF 2.7 million) worth of humanitarian assistance was provided by the DSWD, OCD and LGUs. - 1,083 persons were deployed for Search, Rescue, and Retrieval operations. - 470 schools and 1,504 classrooms are currently being used as evacuation centers. - Augmented medical logistics worth PHP 16 million (CHF 290k) of assorted drugs and medicines, medical supplies, and other commodities. - 3,000 shelter-grade tarpaulins to be provided to affected families in Region XII and BARMM.
<p>UN or other actors</p>	<p>The Humanitarian Country Team (HCT), under the leadership of the United Nations Resident Coordinator and Humanitarian Coordinator (RC/HC) monitored the situation to support government response through the clusters. The RC/HC wrote to the national government and BARMM authorities, expressing solidarity and offering the support of the HCT. Furthermore, Humanitarian Country Team (HCT) Clusters reached out to their government counterparts.</p> <p>WASH Cluster convened by the Department of Health and UNICEF: Preliminary assessment results indicated minimal impact on WASH but with the possible contamination of water sources from the flooding. Through preparedness and rapid response programmes, such as REACH and the Humanitarian Partnership Platform Philippines (HPP), the distribution of WASH supplies (water containers, water disinfection materials, hygiene & dignity kits) has been initiated, mostly in Maguindanao and Cotabato City.</p> <p>The Logistics cluster: received a request by the government and WFP transported 43 trucks with more than 60,000 family food packs to Southern Luzon, Visayas and Mindanao.</p> <p>IOM, CCCM cluster lead prepositioned shelter tarps and supported those in need. The Education Cluster, led by UNICEF and Save the Children worked with the Department of Education on how to support learners once classes resume. OCHA Philippines together with the Mindanao Humanitarian Team</p>



(MHT) and BARMM government partners conducted a Joint Rapid Needs Assessment on 30-31 October 2022, in the most affected areas of BARMM.

Based on the initial assessments results, food, clean water and hygiene kits were the most urgent needs by the affected communities.

Are there major coordination mechanisms in place?

The UN system organized several coordination meetings under the leadership of the UN Resident/ Humanitarian Coordinator, and with the support of UN OCHA. IFRC and ICRC were present in these coordination meetings, and shared detailed information on the activities planned and carried out.



Needs (Gaps) Identified

Water, Sanitation And Hygiene

Water supply services were interrupted and contaminated with flood water in areas where rain-induced landslides and flash floods occurred. A total of 27 cities/municipalities reported water supply interruptions. Based on the initial assessment result of PRC, the WASH sector main need was the availability of potable water, as water sources were either heavily contaminated by flood water and mud or significantly damaged. The affected communities had difficulties in accessing clean water for daily consumption due to water supply interruption and contaminated local water source.□

Additionally, families in the evacuation areas shared common toilet, which was identified as a hygiene risk. Thus, hygiene promotion and awareness campaigns, as well as hygiene materials were required. Displaced families need basic hygiene kits to maintain good hygiene practices and reduce risk of hygiene-related illnesses.

To ensure safe drinking water, there was a need identified to distribute water, as well as water containers (jerry cans) to ensure safe keeping of the distributed water, along with carrying out sensitization on water treatment, handling, and storage.

Protection, Gender And Inclusion

According to available reports, 355,431 people (100,701 families) were pre-emptively evacuated. Furthermore, a total of 111,910 people (27,965 families) took temporary shelter in 1,038 evacuation centers. Another 904,528 people (326,277 families) temporarily stayed with their relatives and/or friends.

Overcrowding was frequently experienced at evacuation centers, compelling families to share spaces, which raises protection concerns linked to shelter, i.e., precarious large makeshift tents with no privacy or gender segregation that may increase risks of violence or abuse. PRC incorporated the IFRC Minimum standards to PGI in emergency programming throughout the response and sectoral plans to ensure sensitivity to the needs of at-risk individuals and groups.

During times of disasters, affected people face increasing vulnerability due to lack of proper housing, limited access to health care, sub-optimal WASH facilities and economic insecurity, often due to loss of immediate livelihood. Vulnerable populations, such as children, the elderly, people with disabilities or a chronic medical condition, face barriers in accessing assistance and increased risk of violence and abuse.

There was a need to protect these people and incorporate their specific needs while planning implementation and ensure Sex, Age and Disability Disaggregated Data (SADDD) to ensure accountability and inclusiveness of the response.

Further, there was a need identified to provide psychosocial support interventions to the people who lost their loved ones, livelihoods and displaced. Thus, a need to support children via child-friendly spaces should be incorporated. Some of the volunteers may need to refresh their knowledge, and the provision of Psychosocial Support should be incorporated.



Community Engagement And Accountability

Community engagement and accountability and feedback/response mechanisms were integrated into the operation to ensure that affected populations have direct access to information on the nature and scope of services provided by the PRC, together with processes that will enable community participation and ease of providing feedback and giving responses. A Barangay Committee (BarCom) was formed to support community engagement as they are direct representatives from their own communities.

The community can directly provide feedback to the BarCom members, which are essential for continuous improvements of the programme implementation. BarCom is composed of a representative number of community representatives – barangay/purok officials, representative of all sectors in the community such as farmers, elderly group, women's group, persons with disabilities, health workers, etc.

Shelter Cluster Coordination

The Shelter Cluster actively collaborated with the Government shelter lead agency (DHSUD) and the Inter-Cluster Coordination Group (ICCG). Given the geographical separation of provinces and areas significantly impacted by STS Paeng, there was a need to establish shelter coordination at the regional hub level.

Furthermore, it was deemed necessary for the Philippine Shelter Cluster Coordinator to provide technical and information management (IM) support to these regional hub coordinators. At the national level, the Philippine Shelter Cluster Coordinator worked closely in collaboration with the government's lead shelter agency, the Department of Human Settlements and Urban Development, and the Inter-Cluster Country Coordination Group.

Shelter Housing And Settlements

STS Paeng damaged 28,031 houses, with 3,061 of them fully damaged and 24,970 partially damaged across Regions I, II, III, CALABARZON, MIMAROPA, V, VI, VII, VIII, IX, X, XI, XII, CARAGA, BARMM, and CAR. Due to the severe tropical storm and subsequent flooding, essential household items were washed away. People displaced stayed in evacuation centers or with host families as their houses were not habitable. It was expected that people would stay in evacuation centers for about two weeks to one month; therefore, there was a need to provide essential household items.

There was also a need to consider medium-term shelter solutions, such as the distribution of conditional cash, materials, and technical assistance. Given the geographical separation of provinces and areas impacted by STS Paeng, it was considered necessary to establish shelter coordination at the regional hub level.

Livelihoods And Basic Needs

According to the Department of Agriculture, the disaster caused an estimated PHP 2.827 billion (CHF 48 million) worth of damage to agriculture, resulting in a loss of 119,532 metric tons of produce. This disaster has affected



81,866 farmers and fisherfolk and has impacted 80,722 hectares of agricultural land. The main commodities affected include rice, corn, high-value crops, fisheries, livestock, and poultry, with rice accounting for the highest damage at 62 percent. Out of the total crop area affected, 19,270 hectares are beyond recovery (fully damaged), and 61,270 hectares have suffered partial damage.

The timing of harvesting varies depending on the region, with some farmers beginning their harvest in mid-October while others are set to start their planting season in mid-November to December. Consequently, the rice crops in flooded fields that were in the mature stage were destroyed by strong winds. Although most farmlands were harvested, the produce had to be sold at a lower price due to its low quality and wet grains. Additionally, boats along the coastal areas were washed away.

This disaster has had a detrimental impact on families who depend on farming and fishing as their primary or secondary sources of livelihood. Therefore, there is a pressing need to provide Multipurpose Cash Grants to address immediate needs and to offer Household Livelihood Assistance to restore inputs for the upcoming planting season. It was also recommended to implement a Community Managed Livelihood Project to support the recovery of farmers and fisherfolk and assist them in restarting their livelihoods. Furthermore, those displaced in evacuation centers or outside of them require food assistance until they can return to their homes, whether in the form of hot meals or food packs, given the situation.

Health

The Department of Health (DOH) reported that 15 health facilities were damaged. Seven of these damaged facilities are hospitals, six are barangay health stations, and two are rural health units. According to the DOH, there were no severe damages to health facilities following the onslaught of STS Paeng. Only minor incidents were reported, including roof damage and some health facilities were affected after the recent STS. Furthermore, it is noted that all these facilities remain functional, and the minor damages are being repaired.

There were 307 consultations for various medical conditions reported from regions II, III, and XII. Among these consultations, at least 129 were for acute upper respiratory infections, 68 for cough and colds, 50 for wounds, 11 for fever, nine for hypertension, and one each for acute gastroenteritis and abdominal pain. Additionally, 38 other disease syndromes were reported.

The immediate health impacts of flooding include the risk of spreading diseases such as leptospirosis, acute respiratory infections, and diarrhea, particularly among small children. This necessitated the provision of medicine. Furthermore, various water, food, and vector-borne diseases affected many people due to the lack of access to water and sanitation facilities.

It was essential to monitor adherence to minimum health protocols to prevent the spread of COVID-19, as the spread of the virus could further increase the risk for staff, volunteers, and affected individuals. Moreover, floods and subsequent evacuations had a significant impact on the psychosocial well-being of displaced people. Therefore, it was necessary for displaced persons to have access to psychosocial support, health promotion activities, and first aid services in the evacuation centers and affected areas.

The provision of health messages and basic medicine for staff and volunteers who were deployed was considered necessary in areas with a high risk of leptospirosis and dengue.



Objective and Strategy Rationale

Overall objective of the operation

The operation was implemented in the National Capital Region (NCR), Region III, IV-A, V, VI and VII, with the aims to meet the immediate and early-recovery needs of 32,500 people (6,500 families) most vulnerable people.

In addition, the operation was implemented within six months and completed by 31 May 2023. The targeted people were assisted through household items (HHI), livelihood, Multi-Purpose Cash Grant (MPCG), health, WASH, community engagement and accountability (CEA), as well as protection, gender and inclusion (PGI).

Response strategy implementation

STS Paeng had an impact on all 17 regions of the Philippines. In determining the priority areas for program implementation under the IFRC-DREF assistance, the PRC considered factors such as the total number of affected individuals, the extent of livelihood damage, the number of damaged houses, poverty incidence, and the expected duration of displacement in evacuation centers and outside them. As a result, the following priorities were identified:

- a. Priority I: Immediate and early-recovery assistance was provided in Region IV-A (Laguna, Quezon – Lucena) and Region VI (Aklan, Antique, Capiz).
- b. Priority II: Immediate assistance was provided in NCR (Marikina, Quezon City), Region III (Aurora), Region IV-A (Batangas, Cavite, Rizal), Region V (Bay, Catandunes, Masbate, Sorsogon), Region VI (Negros Occidental), and Region VII (Negros Occidental).

The ICRC supported the overall PRC plan by providing assistance to Region IX (Zamboanga City), Region XII (Cotabato City), and BARMM (Maguindanao). This assistance included Multipurpose Cash Grants (MPCG), Household Hygiene Items (HHI), Water, Sanitation, and Hygiene (WASH) support, health services, psychosocial support, child-friendly spaces, hot meals, and operational costs. Individuals who had lost essential household items received HHI, including blankets, sleeping mats, mosquito nets, hygiene kits, and jerry cans.

The provision of assistance was coupled with a focus on maintaining hygiene, especially for those living in evacuation centers without access to cooking equipment. PRC responded by providing hot meals through food trucks and food packs in areas where roads and bridges were damaged, preventing the deployment of food trucks.

The livelihood sector suffered the most significant damage, leading to the implementation of Household Livelihood Assistance (HLA) programmes to restore income sources or establish new ventures and projects, including small and microenterprises. HLA was provided through a combination of conditional cash grants, input distribution, and awareness-raising/training. Recipients received a total of PHP 10,000 (CHF 172) in two installments: PHP 6,000 (CHF 103) and PHP 4,000 (CHF 68).

Families affected by income loss or damage to their houses were prioritized for assistance through MPCG. Each selected family received PHP 5,000 (CHF 86) in a single installment. The multipurpose cash assistance complemented other emergency interventions and was determined based on recommendations from the Philippines Department of Social Welfare and Development (DSWD) and the Cash Working Group (CWG), covering essential needs such as food, transportation, healthcare, and other necessary expenses.

Selection of HLA and MPCG beneficiaries involved the Barangay Recovery Committee, and cash transfers were facilitated through "Philpost," the Financial Service Provider (FSP).



Flooding resulted in injuries, illnesses, and psychosocial stress, which PRC addressed through ambulance services, psychosocial support, psychosocial first aid, and the establishment of child-friendly spaces in evacuation centers or schools. With the potential disruption to access basic healthcare services, especially for vulnerable populations, PRC mobilized health caravans/missions focusing on children, pregnant women, and the elderly. Given high alerts for diseases such as Leptospirosis and dengue in flooded areas, PRC distributed relevant Information, Education, and Communication (IEC) materials.

STS Paeng and subsequent flooding damaged water supplies and contaminated water sources, necessitating PRC's deployment of water tankers and water treatment units to ensure access to safe drinking water. This effort was complemented by hygiene promotion campaigns and the distribution of hygiene kits and water storage containers, including jerry cans.

During the reporting period, other ongoing Emergency Operations in the country included the Typhoon Rai Emergency Appeal (MDRPH045), Abra Earthquake IFRC-DREF Operation (MDRPH047), and Super Typhoon Karding DREF Operation (MDRPH048). These operations targeted different vulnerable populations in various areas, and PRC took measures to avoid overlapping assistance with the STS Paeng operation.

Targeting Strategy

Who will be targeted through this operation?

For this IFRC-DREF operation, the PRC targeted the most vulnerable groups identified during the rapid need assessment. These groups were considered as 'orange' according to the level of impact experienced due to STS Peang, their level of vulnerability and their coping capacity.

PRC ensured that its responses and programmes were aligned with its own as well as IFRC's commitment to take into account gender and diversity, for example, putting a focus on and targeting women/child-headed households, pregnant or lactating women, and men, women and children made vulnerable by disasters; families with persons with disability, elderly, those suffering from chronic illnesses, families with children under five years old, families that have not received any or sufficient assistance from the government or other organizations, those belonging to the socially vulnerable families and those who lack the resources to deal with basic humanitarian needs alone. In initial relief assistance provided to the people pre-emptively evacuated and displaced at evacuation centers. The early recovery assistance provided to the people who lost their livelihoods due to STS Peang and subsequent flooding due to the shearline.

Explain the selection criteria for the targeted population

The beneficiaries were identified and verified in coordination with the community and or Barangay leaders, each provided with a PRC beneficiary card with their and family members' names. The card served as the basis for official recognition of bearers as beneficiaries of the PRC and during implementation, PRC volunteers again validated the beneficiaries' names on the cards where they are listed in distribution sheets. Upon receipt of any item or assistance, beneficiaries signed award sheets or participating lists. With these records and validation process, cases of double-assistance or double-counting was eliminated.

Total Targeted Population

Women:	8,469	Rural %	Urban %
Girls (under 18):	6,381		
Men:	6,748	People with disabilities (estimated %)	
Boys (under 18):	8,398	1.00 %	



Total targeted population:

32,500

Risk and security considerations

Please indicate about potential operational risk for this operations and mitigation actions

Risk	Mitigation action
Personnel safety was threatened by COVID-19 in the implementation of interventions.	Appropriate Personal Protective Equipment (PPE) was provided for personnel involved in the operations. Advisory information was circulated in terms of precautionary measures to be taken to protect health and safety and early warning and early action systems (in accordance with the authorities' own contingency plans)
There was no threat of further tropical cyclones developed or entered the Philippine zone of responsibility that influenced the country due to the current typhoon season. Furthermore, It could affect the implementation of planned activities under the current DREF operation.	The PRC OpCen (Operations Centre) monitored the meteorological situation and provided the necessary alerts when necessary.

Please indicate any security and safety concerns for this operation

The identified safety and security threats did not significantly affect the ability or access of Red Cross personnel to implement programme activities. The risk of disease transmission is usually higher with the mobilization of people. There was a provision of Doxycycline Prophylaxis for staff and volunteers being deployed in the flooded areas. The key potential risks to Red Cross Personnel were road safety incidents, flash floods, mudslides, petty crime, and health risks.

Proactive security measures were put in place, and team leaders were aware of the mitigating measures to be taken to avoid such risks. The National Society's security framework was applicable throughout the duration of the operation to their staff and volunteers. For personnel under IFRC security's responsibility, the existing IFRC country security guidelines were applicable, along with security briefings for all IFRC personnel, movement monitoring for field travel, and the availability of safety equipment.



Implementation

	Protection, Gender And Inclusion	Budget	CHF 12,486
		Targeted Persons	32500
		Persons Assisted	29996
Indicators		Target	Actual
# of child-friendly spaces established		10	18
# of volunteers trained via crash courses – PSP, CFS, RFL		100	150
# of people provided with PGI services		32500	29996

Narrative description of achievements

The incorporation of PGI marked a significant step in addressing the specific needs and vulnerabilities of the affected population. By adhering to the IFRC's minimum standard commitments to PGI in emergencies, interventions were provided to prioritize the most at-risks groups, including women-headed households, pregnant and lactating women and vulnerable men and boys.

Through collaboration with partners, the PRC undertook a comprehensive range of activities to ensure the successful implementation of the IFRC-DREF operation. To help affected families, 22 welfare desks were set up in evacuation centers (one in each). Welfare desks assist displaced people with; i) restoring family links (RFL); (ii) tracing; (iii) inquiry and communications; (iv) contact of relatives; and (v) referral.

One of the most urgent needs in the aftermath of the disaster was psychosocial support (PSS) and psychosocial first aid (PFA) to the affected families, especially children, senior citizens, pregnant women and persons with disability.

It was also necessary to ensure the establishment of referral mechanisms for arising mental health issues. Through IFRC DREF, PRC reached total of 3,200 people, of which 2,790 was reached through PSS and 410 was reached through PFA.

Furthermore, PRC established 66 child-friendly spaces (CFS) in 21 municipalities, where 4,851 children were provided with immediate support. Of these 39 CFS in 15 municipalities, where 2,459 children were supported with IFRC-DREF and 2,332 children were supported through ICRC support and 60 children through PRC direct support.

In alignment with the IFRC's zero-tolerance policy towards violence against children, the PRC took proactive measures to safeguard their well-being and protection throughout the operation. A Child Protection policy was integrated into the orientation provided to all staff and volunteers involved in the response. This ensured that everyone engaged in the operation was well-informed about the policy and fully committed to adhering to its principles and guidelines. By actively promoting and enforcing this policy, the PRC sought to create a secure environment for children, free from violence or exploitation. To this end, a total of 18 child-friendly space were established.



The commitment of the PRC to the psychosocial well-being and gender inclusivity of the affected population was evident through the incorporation of PGI interventions and the implementation of the Child Protection policy. These measures were integral to the overall success of the operation, addressing immediate needs while contributing to long-term resilience and recovery. By ensuring that staff and volunteers were well-equipped and committed to upholding these standards, the PRC demonstrated its dedication to providing effective and accountable assistance to the affected communities.

Lessons Learnt

- None

Challenges

- None

	Secretariat Services	Budget	CHF 39,332
		Targeted Persons	29996
		Persons Assisted	0
Indicators		Target	Actual
% of financial reporting compliance to IFRC procedures		100	100
# of communications materials produced (social media, media articles, interviews, etc.) to share information about the operation		10	8

Narrative description of achievements

The visibility of PRC efforts to prepare and assist people affected by Typhoon STS Paeng were promoted and highlighted through mainstream and traditional media. As of reporting period, a total of 8 press releases, Facebook page posts, twitter, YouTube and Instagram posts were developed.

The PRC and IFRC communications team worked on the messaging, Audio Visual materials, stories/infographics that presented a clearer picture of the damages, supported by statistics and data. Some publications by PRC on websites and social media are as follows:

a. Twitter Thread:

- Helping Hands in Action
- Volunteers from Philippine Red Cross – Aklan Chapter Crossed the Aklan River three Months After Typhoon Paeng Ravaged Parts of the Country

b. YouTube:

- PH Red Cross calls for donation for Paeng Victims I ANC
- CNN Philippines: PH Red Cross Mobilizes Relief Efforts



c. PRC Website:

- PRC Returns Aklan to Aid Families Affected by Severe Tropical Storm Paeng

d. Facebook:

- Severe Weather Bulletin for Typhoon Paeng (Nalgae)
- Tropical Storm Paeng Hits Various Parts of Philippines. Teams from the Philippines Red Cross are on the ground providing support to the affected communities.

e. Media Pick-up:

- Global Daily Mirror
- PH Red Cross provides Psychological First Aid to STS Paeng Survivors
- PH Red Cross rescues 279 people trapped in Paeng Floods
- PH Red Cross on High Alert for Undas, Paeng Onslaught
- PH Red Cross Welcomes Donations for Paeng Victims
- European Union Brings Relief to the Victims of Tropical Storm Nalgae in the Philippines
- The Philippines Activates its Early Action Protocol (EAP) for Typhoons Ahead of Tropical Storm Nalgae
- #ReliefPH: Help Communities Affected by Severe Tropical Storm Paeng
- Nations Pledge Aid for Philippines in Wake of Paeng
- BARMM Reaches Out to Children Displaced by Paeng on National Children’s Months Celebration
- Forced Evacuation in Benguet due to Paeng
- PRC Steps Up Emergency Response to Paeng Victims in Maguindanao, Cotabato

Lessons Learnt

- None

Challenges

- None

	National Society Strengthening	Budget	CHF 101,612
		Targeted Persons	2996
		Persons Assisted	150
Indicators		Target	Actual
# of lessons learned workshops conducted		1	1
# of chapters actively involved in the operation implementation		8	8
% of volunteers involved in the operation insured		100	100

Narrative description of achievements

The mobilization effort for this operation involved 150 volunteers and staff who were fully insured under the Membership and Accident Benefit (MAAB) programme of the PRC. By becoming members of the PRC, volunteers were able to contribute to humanitarian activities and also gained access to a wide range of Red Cross



services and comprehensive accident insurance. This insurance coverage plays a pivotal role in safeguarding the volunteers' interests and providing them peace of mind during the operation.

Furthermore, the MAAB programme extends its coverage to encompass unfortunate situations that volunteers may encounter (unfortunate events such as accidental death, dismemberment, hospitalization, or burial services). The programme represents the PRC's proactive approach to mitigating future risks and uncertainties. It recognizes the volunteers' unwavering commitment and ensures that PRC volunteers receive the necessary support and assistance when they need it the most.

Following the completion of the operation, a lesson learned workshop was organized to reflect on the experiences and outcomes. This workshop was facilitated by the IFRC and PRC. The participants included representatives from the National Headquarters (NHQ) comprising different services and representatives from eight Chapters involved in the operation (Antique, Capiz, Aklan, Laguna, Quezon-Lucena, Cavite, Maguindanao, and Zamboanga) and partners.

The primary objective of the lesson learned workshop was to create a platform for open and consultative discussions, enabling the participants to share their valuable insights, observations, and recommendations for future improvement. This collaborative and reflective approach ensures that the Red Cross network continues to evolve and enhance its responses and capabilities, ultimately benefiting those in need during times of emergency and disasters and strengthening the capacity of the Philippine Red Cross.

Lesson Learned plays a crucial role in strengthening the National Society through:

- I. Knowledge Sharing
- II. Identifying Strengths and Weaknesses
- III. Process Improvement
- IV. Innovation and Adaptability
- V. Training and Development

In summary, the lesson learned study of the Paeng operation was conducted using a qualitative approach, which included a desk review, Key Informant Interviews (KII), and a series of learning sessions and validation workshops with PRC NHQ representatives, PRC Chapter representatives, and IFRC representatives. Additionally, data from the assistance's PDM, consisting of surveys and Focused Group Discussions (FGD), were also reviewed to enrich the lesson learned.

The process of lesson learned was facilitated by the Lesson Learned team, consisting of the PRC Monitoring, Evaluation, Accountability, and Learning - Information Management (MEAL IM) Officer, the IFRC Planning, Monitoring, Evaluation, and Reporting (PMER) Officer, and a surge PMER delegate from IFRC-Indonesia. The data and information collected were analyzed by the team and validated with other PRC NHQ and Chapter representatives. The whole process was conducted during April and May 2023.□

As of the reporting period, the Severe Tropical Storm Paeng (Nalgae) Anticipatory, Operation, and Early Recovery Lesson Learned Report has been finalized. However, it is awaiting approval by PRC higher management and will be shared once it is approved by PRC.

Lessons Learnt

- Continuous recruitment of RC 143 should be considered as a priority, as volunteers is the key in implementing activities in the communities.

Challenges

- Retention of volunteers was a challenge. Chapters face lot of difficulties when implementing activities, since the turnover of well trained and experienced volunteers.



	Multi-purpose Cash	Budget	CHF 134,190
		Targeted Persons	7000
		Persons Assisted	7625
Indicators		Target	Actual
# of affected families provided with multi-purpose cash grants to address their basic needs		1400	1525

Narrative description of achievements

In the affected regions where farming and fishing serve as the primary and secondary sources of livelihood, the impact of the flooding was keenly felt by the local communities. Affected families were confronted with a decline in income and severely limited access to essential resources. The urgency of their situation prompted the implementation of the MPCG.

With the support of IFRC, PRC was able to reach 1,525 households (7,625 people) with MPCG, surpassing the initial target by 109 percent. The allocation of cash assistance to the additional households that exceeded the initial target of 1,400 families was a meticulous process that involved thorough assessment, beneficiary selection, and PRC approval. Furthermore, with the support of ICRC, PRC provided MPCG to 1,493 families in Maguindanao province.

Based on the results of the assessment and beneficiary selection, it was recommended that some households needed livelihood assistance in addition to the MPCG assistance provided, as these families were severely affected by the disaster. Assistance from the Livelihood section will be reflected in the livelihood section.

The grant aimed to cover essential needs, including food, shelter, healthcare, and education. Families received a one-time transfer of PHP 5,000 based on the minimum basket of expenditures. The Financial Service Provider (FSP) Philpost was mobilized for cash distributions to the families.

The results of Post Distribution Monitoring (PDM) in the three provinces clearly demonstrate the effectiveness of cash assistance in addressing the immediate needs of the affected families. Based on the PDM results, it was found that 76 percent of families utilized the cash assistance to buy food.

The distribution of cash assistance has not caused any tension situation in the community, even though cash assistance was only provided to selected families based on the community selection process.

The results of PDM in three provinces highlight the top three areas where cash assistance was utilized: food, house repair, and school-related expenses.

I. Food Expenditure:

One of the primary concerns following a disaster is ensuring that affected individuals have access to an adequate food supply. The PDM revealed that a significant portion of the cash assistance was utilized for purchasing food items. The funds enabled the families to overcome immediate food shortages and ensure nutritional needs were met.

II. House Repair:

Housing infrastructure often suffers severe damage during and after Typhoon Paeng (Nalgae), leaving families



in vulnerable conditions. The utilization of cash assistance for house repairs emerged as a top priority among the affected population.

III. School-Related Expenses:

A considerable portion of the cash assistance was directed towards school-related expenses. The fund was utilized for covering transportation costs, school supplies, and the daily expenses of students in school. By alleviating the financial burden associated with education, the cash assistance ensured that the children in the affected provinces could promptly resume their studies.

Lessons Learnt

- The staff and volunteers through the BaReCoM to disseminate widely the selection process and selection criteria, specially to the non-beneficiaries to ensure that non-beneficiaries also understand the programme of PRC.

Challenges

- In chapter level, the criteria for selection of beneficiaries created tension/comparison among the communities. The communities requested to conduct revalidation and house to house visits to limit the complaints from the community.
- Community has limited knowledge and understanding about the PRC activities.

	Community Engagement And Accountability	Budget	CHF 0
		Targeted Persons	32500
		Persons Assisted	350
Indicators		Target	Actual
# of complaints and feedback received responded to by the NS		100	100
% of community members who know how to contact PRC to give feedback		80	28

Narrative description of achievements

The PRC conducted a comprehensive Post Distribution Monitoring (PDM) assessment to evaluate the impact of relief efforts on beneficiaries affected by STS Paeng. The PDM focused on gauging the effectiveness of Community Engagement and Accountability (CEA) initiatives, specifically through the utilization of the Kobo tool. The assessment aimed to determine the respondents' knowledge of the Red Cross Chapter's location and contact details, as well as their utilization of the provided feedback mechanism by the PRC.

The PDM survey targeted a sample of 350 respondents, representing a cross-section of the affected communities. It sought to gather information on the beneficiaries' awareness of the Red Cross Chapter's location and contact details, as well as their engagement with the PRC's feedback mechanism. Among the total respondents, only 100 individuals (28 percent) demonstrated knowledge of how to reach the chapter's location or access its contact details. This highlights a concerning lack of awareness among the affected communities regarding the chapter's visibility. To address this, efforts should be intensified to enhance the chapter's presence within the



communities.

Regarding the utilization of the feedback mechanism, the survey revealed that 6 percent of the total respondents (21 respondents) reported having used it. This indicates a positive response to the PRC's efforts in establishing an effective feedback system. Importantly, all complaints received through this mechanism were promptly addressed and resolved by the respective PRC chapters, showcasing the organization's commitment and responsiveness.

The PRC's PDM provided valuable insights into the knowledge and engagement of Typhoon Paeng beneficiaries with the Red Cross Chapter and the feedback mechanism. The findings underscore the need for the chapter to strengthen its visibility within the communities to ensure beneficiaries are informed about its location and contact details.

Furthermore, the positive utilization of the feedback mechanism demonstrates the effectiveness of the PRC's efforts in fostering accountability and responsiveness in addressing beneficiary concerns, including inquiries for assistance.

Moving forward, it is recommended that the PRC continues to prioritize CEA initiatives to enhance the overall effectiveness of its relief efforts.

Lessons Learnt

- Staff and volunteers have different level of understanding regarding CEA. Hence, incorporating CEA to the activities vary. The community was welcomed to give their feedback, inquiries, even complaints. However, there is a need to improve the responding mechanism. Conducting CEA trainings, refresher trainings will help to improve the knowledge on CEA.

Challenges

- Limited knowledge on CEA guideline among the volunteers. This requires provision orientation and training in the chapters.

	Shelter Housing And Settlements	Budget	CHF 81,305
		Targeted Persons	2500
		Persons Assisted	2500
Indicators	Target	Actual	
# of households provided with essential household items	500	500	

Narrative description of achievements

In the aftermath of Typhoon Paeng and subsequent flooding, essential household items were washed away. The affected population faced dire circumstances and were in urgent need of necessities. The impact of the floods caused distress among people, as it not only resulted in physical damage to their homes but also disrupted their livelihoods. The loss of essential household items further exacerbated their lives, leaving them without the basic resources necessary for their well-being and comfort.



In response to the situation, the PRC provided essential household items to 2,497 families. Among them, 500 families in Laguna province were supported through IFRC-DREF. Furthermore, 1,497 families in Maguindanao province received support through ICRC, and 500 families in Maguindanao province and Zamboanga City province were assisted through the Australian Department of Foreign Affairs and Trade (DFAT) assistance.

The PRC, in close coordination with the IFRC, mobilized its dedicated team of trained volunteers and staff to conduct the Rapid Disaster Assessment and Needs Analysis (RDANA) in the affected areas and to provide assistance to the affected families.

The emergency household items were mobilized from the PRC's pre-positioned stocks at the regional warehouses. The IFRC Logistics unit conducted the procurement process to replenish the items distributed.

Lessons Learnt

- There should be a system to pre-position supplies in the chapters for emergency purpose (specially chapters which are disaster-prone) to avoid delays in distribution.

Challenges

- For chapter level, there was limited number of essential household items. Hence, the delivery or implementation was delayed, as chapters had to wait for the delivery of items from the regional warehouses to commence the distributions.

	Livelihoods And Basic Needs	Budget	CHF 275,983
		Targeted Persons	16500
		Persons Assisted	12430
Indicators		Target	Actual
# of families provided with Household Livelihood Assistance		800	802
# of hot meals distributed		10000	10824
# of families provided with food packs		2500	1684

Narrative description of achievements

The deployment of the food truck fleet was a significant step in addressing food security concerns in the affected communities. PRC, through the deployment of food trucks, provided hot meals to 33,507 people, of which 10,824 people were supported through IFRC-DREF. The remaining families were supported through ICRC and local donations received by PRC. The provision of hot meals through the food trucks had a significant impact on individuals. Not only did it address their immediate food needs, but it also provided them with a sense of security and comfort during this challenging time. The availability of nutritious meals helped prevent malnutrition and other health issues among the displaced populations.

Furthermore, PRC provided food packs to 1,799 families, with 1,684 families being supported through IFRC-DREF, and the remaining families receiving support through local donations received by PRC. The initial target to distribute 2,500 food packs was reduced based on the needs on the ground and in line with assistance provided



by LGUs and other organizations.

In addition, due to the significant impact of the storm and flooding brought by Typhoon Paeng (Nalgae), it is evident that there was a pressing need for support to restore the affected households' livelihood activities. The damage to gardening tools, livestock, rice fields, and fishing equipment severely disrupted their means of income. Through the support of IFRC, PRC was able to extend conditional cash grants to affected households, specifically targeting the restoration of their livelihood assets. PRC supported a total of 1,001 families with Household Livelihood Assistance (HLA), of which 802 families in Aklan and Antique provinces were supported through IFRC-DREF, and 199 families in Capiz province were supported through Qatar Red Crescent Society support.

The implementation of HLA started with the following process:

I. Community Selection:

The PRC team verified the data gathered from municipal offices and used the information as the basis for prioritizing affected communities. Communities were chosen based on several criteria, including those affected by the typhoon, the extent of damage, poverty rate, PRC Disaster Report, and accessibility, safety, and security.□

II. Community Orientation and Barangay Recovery Committee (BaReCom) Formation:

The team established a BaReCom to act as the PRC's community-level counterpart once the community had acknowledged and agreed to support the initiative. This increased community ownership over the project.

The BaReCom was composed of at least ten representatives, including a maximum of two elected officials, barangay leaders, representatives of religious organizations, livelihood organizations, women's groups, senior citizens groups, 4Ps beneficiaries, leaders of persons with disabilities (PWD), and barangay health workers. Aside from the specific purpose of upholding the principles and fairness of the delivery of livelihood assistance at the community level, the BaReCom acted as RC143 volunteers.□

III. Criteria Setting for Priority and Less Priority Households:

The BaReCom led the criteria-setting process and determined which households should receive priority and which should not through a consensus-building process involving the community. The community created vulnerability standards for priority households or inclusion criteria based on their context. The BaReCom disseminated these criteria to the target population in writing and with examples.

IV. Social Mapping of Vulnerable Households:

After the BaReCom clarified and presented the community with the completed criteria, the team facilitated the mapping of possible beneficiaries using a spot map tool. If the household was a priority, their name was printed on color-coded papers and pasted on the spot map.

V. Beneficiary Validation:

The team conducted beneficiary validation through community and house-to-house validations with the initially stated names as the basis for possible beneficiaries after the community finished the process of examining the names of the households in the social map. To avoid prejudice in creating the final list of beneficiaries, they requested attendance at a community meeting designed for community validation from all potential beneficiaries.

VI. Posting of Final List of Beneficiaries:

The team posted the verified beneficiary list in the designated areas so that the locals could evaluate it and provide feedback. CEA was established through visibility materials per community, including brochures and banners with pertinent project details and frequently asked questions.

VII. Beneficiary Registration:

Beneficiary registration was carried out by the team for the chapters utilizing the Red Rose Application following beneficiary validation. The PRC used the Red Rose Application as a tool for conducting mobile surveys, gathering



details about their families, income, access to basic requirements, and the effects of the disaster on their lives. In line with COVID-19 preventive measures, staff and volunteers ensured that the interview was completed within 15 minutes.

VIII. Project Orientation to Final Beneficiaries:

An in-depth orientation to the recipients was conducted by the team. The team explained the purpose of the project, the amount and conditions of the beneficiaries' grants, as well as the duties that must be fulfilled. The team also interviewed the beneficiaries about their livelihood conditions prior to the disaster, which served as the baseline data for monitoring and evaluating the impact of PRC recovery assistance in terms of livelihood restoration for the most vulnerable households in target barangays.

Each household beneficiary received a Household Livelihood Assistance Toolkit, which included their Beneficiary Card (BenCard), beneficiary names, and flyers from PRC and partner government agencies such as the Department of Agriculture (DA) and the Department of Trade and Industry (DTI).

IX. Generation of Household Livelihood Projects:

According to their household's capacity and competency, recipients of the HLA submitted a maximum of two livelihood activities. Based on the viability of the proposals and the accessibility of the suggested items in the market, the team for the chapters, with technical support from the NHQ team, assessed and accepted these proposals.

X. Conduct of Technical Training:

The Municipal Agricultural Office (MAO) and the Department of Trade and Industry (DTI) were invited by the team to help the recipients with skill development as a complement to the assistance. The Department of Trade and Industry focused on "Entrepreneurial Development Training" and basic financial literacy, providing the recipients with the tools they needed to manage their businesses and introducing them to saving options. Additionally, it provided households with the technical and marketable skills they needed to restart their livelihoods.□

XI. Distribution of Assistance:

All beneficiaries received orientation regarding the payout details prior to the planned payout. The team gave the recipients instructions on what to bring, where to go, and when to expect their payoff. Recipients received a refresher on the terms and intent of the grant, as well as information about Red Cross 143 and their roles during the payout.

This support aimed to improve the affected households' income-generating capabilities.

Lessons Learnt

- The established good relation of PRC Chapters with the communities and recipients of assistance led to successful implementation of the HLA programme.
- Continuous relationship building for more confidence and trust within the communities and among other stakeholders.

Challenges

- One of the challenges encountered was the complaints from the community on the long process of HLA programme implementation. Where they mentioned it took most of their time. Lack of knowledge and understanding of recipients led to complaints.

	Health	Budget	CHF 18,362
--	---------------	---------------	------------



	Targeted Persons	2500
	Persons Assisted	4165
Indicators	Target	Actual
# of families reached through provision of mosquito nets	500	500
# of people provided with First Aid	250	667
# of people reached through NS emergency health management programmes / health caravan	500	4165
# of PRC ERU teams deployed	1	1

Narrative description of achievements

Based on the assessment, the immediate health impacts of floods can be quite severe, with the risk of spreading various diseases being a significant concern. To address these health challenges, the PRC deployed health caravans to affected communities. With the support of the IFRC, the health caravans provided free medical services to 4,165 individuals in Aklan, Antique, Batangas, Cavite, and Laguna. These health caravans offered a comprehensive range of services, including health consultations, dental and optometry services, health and hygiene promotion, first aid lectures and demonstrations, vaccinations for diseases like measles, rubella, polio, and COVID-19, over-the-counter medicines, and health kits.

The provision of these medical services was crucial in addressing the immediate health needs of the flood-affected population. By offering consultations and treatments, the health caravans helped identify and treat diseases early on, preventing their further spread. The dental and optometry services provided essential care for oral and visual health, ensuring that individuals received necessary treatments and prescriptions. Health and hygiene promotion activities helped educate the affected communities about disease prevention measures, proper sanitation practices, and maintaining personal hygiene.

In terms of vaccinations, the health caravans played a vital role in protecting individuals against infectious diseases. By administering vaccines for diseases like measles, rubella, polio, and COVID-19, they helped boost immunity within the flood-affected population and reduce the risk of outbreaks or further transmission. The distribution of over-the-counter medicines and health kits also provided immediate relief to those in need, ensuring access to necessary medications and basic healthcare supplies.

Furthermore, in the immediate aftermath of the disaster, PRC mobilized its first aid teams to provide basic first aid services by establishing first aid stations in evacuation centers. A total of 16 first aid stations were established in Antique, Aklan, and Capiz provinces, where 667 individuals received first aid services and blood pressure readings.

In addition to the mentioned medical services, another important intervention during flood situations is the provision of mosquito nets. Mosquito nets are effective in preventing mosquito bites, which can transmit diseases such as dengue fever and malaria. A total of 500 families (2,500 individuals) were provided with mosquito nets. This intervention helped safeguard these families, reducing their exposure to mosquito-borne diseases and providing them with a measure of peace of mind during the challenging post-flood period.

Lessons Learnt



- Conduct the recruitment of medical volunteers to assist the implementation of health activities when there is a limited workforce of trained health professionals within PRC.
- PRC to continue to provide trainings to ensure medical volunteers and staff have necessary knowledge and skills to conduct emergency health activities.
- Mobilization of additional personnel with medical expertise, expanding the capacity to provide essential health care services to affected population.

Challenges

- PRC Chapters have limited resources in terms of manpower for implementing health caravan activities.

	Water, Sanitation And Hygiene	Budget	
		CHF 84,960	
		Targeted Persons	
		18750	
		Persons Assisted	
		22826	
Indicators	Target	Actual	
# of people mobilised for cash for work activities	20	0	
# of water litres distributed (according to WHO standards)	1000000	364300	
# of households provided with jerry cans	1300	750	
# of people reached by hygiene promotion activities	18750	2732	
# of households provided with hygiene kits	1300	750	

Narrative description of achievements

The PRC Chapter WASH team responded to the impact of Typhoon Paeng (Nalgae) by conducting an assessment and implementing wide range of intervention to address the urgent water, sanitation, and hygiene needs of the communities. WASH needs were one of the major needs raised within the community, as water supply services were interrupted and contaminated with flood water in areas where rain-induced landslides and flash floods occurred.

To address the immediate needs on the ground PRC mobilized its water tankers and water purification units to the affected areas to provide safe drinking water. PRC has distributed 994,300 liters of safe drinking water. Of which provision of 364,300 liters or 22,826 people were supported through IFRC DREF and provision of 630,000 liter were supported through ICRC assistance.

The provision of jerry cans and hygiene kits reached 250 households (1,250 individuals). The initial target was to provide jerry cans and hygiene kits to 1,300 families. The variance is mainly due to changes in the needs and support from the other organizations on the ground. The items were distributed to address the immediate needs on water and sanitation of the affected communities and promote hygiene practices. The provision of



jerry cans safe water storage among households, as the flooding has washed away the household items. Hygiene kits were also distributed to address broader hygiene needs. The kits contained essential items such as soap, toothbrushes, toothpaste, and sanitary napkins, The purpose of these kits was to promote and facilitate proper hygiene practices among community members.

All the assistance was combined with hygiene promotion activities which reached total of 7,320 people of which 2,732 people were supported through IFRC DREF. The remaining people were supported through PRC and ICRC. Campaign aimed to educate and raise awareness among community members about proper hygiene practices and emphasizing the importance of sanitation and preventing water borne diseases.

Furthermore, cash for work for cleaning evacuation centers and sanitation facilities were deprioritized as community organized themselves and conducted the required sanitation activities. •

Lessons Learnt

- Continuous provision of technical training / crash courses by NHQ to chapters WASH focal and volunteers

Challenges

- Limited IEC materials in Chapters and lack of training on emergency WASH assistance.



Financial report

DREF Operation

FINAL FINANCIAL REPORT

Selected Parameters			
Reporting Timeframe	2022/11-2023/8	Operation	MDRPH050
Budget Timeframe	2022/11-2023/5	Budget	APPROVED

Prepared on 21/Sep/2023

All figures are in Swiss Francs (CHF)

MDRPH050 - Philippines - Severe Tropical Storm Paeng 2022

Operating Timeframe: 11 Nov 2022 to 31 May 2023

I. Summary

Opening Balance	0
Funds & Other Income	748,231
DREF Response Pillar	748,231
Expenditure	-541,684
Closing Balance	206,547

II. Expenditure by area of focus / strategies for implementation

Description	Budget	Expenditure	Variance
AOF1 - Disaster risk reduction		7,440	-7,440
AOF2 - Shelter	81,305	68,019	13,286
AOF3 - Livelihoods and basic needs	410,173	332,264	77,909
AOF4 - Health	33,221	18,329	14,891
AOF5 - Water, sanitation and hygiene	70,102	27,395	42,707
AOF6 - Protection, Gender & Inclusion	12,486	15,123	-2,637
AOF7 - Migration	39,332	4,787	34,544
Area of focus Total	646,618	473,358	173,261
SFI1 - Strengthen National Societies	101,245	51,840	49,405
SFI2 - Effective international disaster management	367		367
SFI3 - Influence others as leading strategic partners			0
SFI4 - Ensure a strong IFRC		16,486	-16,486
Strategy for implementation Total	101,612	68,326	33,286
Grand Total	748,231	541,684	206,547



[Click here for the complete financial report](#)

Please explain variances (if any)

The actual expenditure is CHF 541,684 (72 percent) of the CHF 748,231 IFRC-DREF amount requested. The balance from this operation, CHF 206,547 will be returned to the IFRC-DREF pot.

The variances are due to the following: the local procurement of blankets and sleeping mats has been booked under the Disaster Risk Reduction budget line, which should have been booked under the shelter sector. The variance under the livelihood and basic needs are mainly due to savings on the operation cost of Household Livelihood Assistance (HLA) and reduction in the provision of food packs. Furthermore, there were changes to the Health and WASH needs on the ground, where the PRC aligned the assistance accordingly, which resulted under spend in the Health and WASH sector.

Contact Information

For further information, specifically related to this operation please contact:

- **National Society contact:** Gwendolyn Pang, Secretary General, gwenpang@redcross.org.ph
- **IFRC Appeal Manager:** Alberto Bocanegra, Head of Delegation, alberto.bocanegra@ifrc.org, +63 998 585 0794
- **IFRC Project Manager:** Radhika Fernando, Operations Manager, radhika.fernando@ifrc.org, +63 998 960 6284
- **IFRC focal point for the emergency:**
Farah Nur Wahyuni Zainuddin, Operations Coordinator, opscoord.southeastasia@ifrc.org, +60 13 650 3391
- **Media Contact:** Mary Beatrice Siongco, Communications Officer, marybeatriz.siongco@ifrc.org, +63989606291

[Click here for the reference](#)

